

Carlsbad Field Office OCD Artesia

Form 3160-3
(March 2012)

UNITED STATES DEPARTMENT OF THE INTERIOR BUREAU OF LAND MANAGEMENT

APPLICATION FOR PERMIT TO DRILL OR REENTER

FORM APPROVED
OMB No. 1004-0137
Expires October 31, 2014

5. Lease Serial No.
NMNM 120904

6. If Indian, Allottee or Tribe Name

7. If Unit or CA Agreement, Name and No.

8. Lease Name and Well No.
SUMIDEROS 12 W1PA FED COM 2H

9. API Well No.

10. Field and Pool, or Exploratory
PURPLE-SAGE WOLFCAMP GAS / WO

11. Sec., T. R. M. or Blk. and Survey or Area
SEC 12 / T26S / R31E / NMP

12. County or Parish
EDDY

13. State
NM

1a. Type of work: ☒ DRILL

☐ REENTER

1b. Type of Well: ☐ Oil Well ☒ Gas Well ☐ Other

☐ Single Zone ☒ Multiple Zone

2. Name of Operator
MEWBOURNE OIL COMPANY

3a. Address
PO Box 5270 Hobbs NM 88240

3b. Phone No. (include area code)
(575)393-5905

4. Location of Well (Report location clearly and in accordance with any State requirements.)*

At surface SESE / 185 FSL / 380 FEL / LAT 32.0507184 / LONG -103.7242938

At proposed prod. zone NENE / 330 FNL / 990 FEL / LAT 32.0639703 / LONG -103.7262645

14. Distance in miles and direction from nearest town or post office*
25 miles

15. Distance from proposed*
location to nearest 185 feet
property or lease line, ft.
(Also to nearest drig. unit line, if any)

16. No. of acres in lease

17. Spacing Unit dedicated to this well
320

18. Distance from proposed location*
to nearest well, drilling, completed, 50 feet
applied for, on this lease, ft.

19. Proposed Depth
11708 feet / 16489 feet

20. BLM/BIA Bond No. on file
FED: NM1693

21. Elevations (Show whether DF, KDB, RT, GL, etc.)
3209 feet

22. Approximate date work will start*
01/19/2018

23. Estimated duration
60 days

24. Attachments

The following, completed in accordance with the requirements of Onshore Oil and Gas Order No.1, must be attached to this form:

1. Well plat certified by a registered surveyor.

2. A Drilling Plan.

3. A Surface Use Plan (if the location is on National Forest System Lands, the SUPO must be filed with the appropriate Forest Service Office).

4. Bond to cover the operations unless covered by an existing bond on file (see Item 20 above).

5. Operator certification

6. Such other site specific information and/or plans as may be required by the BLM.

25. Signature
(Electronic Submission)

Name (Printed/Typed)
Bradley Bishop / Ph: (575)393-5905

Date
10/31/2017

Title

Regulatory

Approved by (Signature)
(Electronic Submission)

Name (Printed/Typed)
Cody Layton / Ph: (575)234-5959

Date
06/22/2018

Title

Supervisor Multiple Resources

Office
CARLSBAD

Application approval does not warrant or certify that the applicant holds legal or equitable title to those rights in the subject lease which would entitle the applicant to conduct operations thereon.
Conditions of approval, if any, are attached.

Title 18 U.S.C. Section 1001 and Title 43 U.S.C. Section 1212, make it a crime for any person knowingly and willfully to make to any department or agency of the United States any false, fictitious or fraudulent statements or representations as to any matter within its jurisdiction.

(Continued on page 2)

*(Instructions on page 2)

APPROVED WITH CONDITIONS

Approval Date: 06/22/2018

RUP 6-29-18

NM OIL CONSERVATION
ARTESIA DISTRICT

JUN 27 2018

RECEIVED

INSTRUCTIONS

GENERAL: This form is designed for submitting proposals to perform certain well operations, as indicated on Federal and Indian lands and leases for action by appropriate Federal agencies, pursuant to applicable Federal laws and regulations. Any necessary special instructions concerning the use of this form and the number of copies to be submitted, particularly with regard to local, area, or regional procedures and practices, either are shown below or will be issued by, or may be obtained from local Federal offices.

ITEM 1: If the proposal is to redrill to the same reservoir at a different subsurface location or to a new reservoir, use this form with appropriate notations. Consult applicable Federal regulations concerning subsequent work proposals or reports on the well.

ITEM 4: Locations on Federal or Indian land should be described in accordance with Federal requirements. Consult local Federal offices for specific instructions.

ITEM 14: Needed only when location of well cannot readily be found by road from the land or lease description. A plat, or plats, separate or on the reverse side, showing the roads to, and the surveyed location of, the well, and any other required information, should be furnished when required by Federal agency offices.

ITEMS 15 AND 18: If well is to be, or has been directionally drilled, give distances for subsurface location of hole in any present or objective productive zone.

ITEM 22: Consult applicable Federal regulations, or appropriate officials, concerning approval of the proposal before operations are started.

NOTICES

The Privacy Act of 1974 and regulation in 43 CFR 2.48(d) provide that you be furnished the following information in connection with information required by this application.

AUTHORITY: 30 U.S.C. 181 et seq., 25 U.S.C. 396; 43 CFR 3160

PRINCIPAL PURPOSES: The information will be used to: (1) process and evaluate your application for a permit to drill a new oil, gas, or service well or to reenter a plugged and abandoned well; and (2) document, for administrative use, information for the management, disposal and use of National Resource Lands and resources including (a) analyzing your proposal to discover and extract the Federal or Indian resources encountered; (b) reviewing procedures and equipment and the projected impact on the land involved; and (c) evaluating the effects of the proposed operation on the surface and subsurface water and other environmental impacts.

ROUTINE USE: Information from the record and/or the record will be transferred to appropriate Federal, State, and local or foreign agencies, when relevant to civil, criminal or regulatory investigations or prosecution, in connection with congressional inquiries and for regulatory responsibilities.

EFFECT OF NOT PROVIDING INFORMATION: Filing of this application and disclosure of the information is mandatory only if you elect to initiate a drilling or reentry operation on an oil and gas lease.

The Paperwork Reduction Act of 1995 requires us to inform you that:

The BLM collects this information to allow evaluation of the technical, safety, and environmental factors involved with drilling for oil and/or gas on Federal and Indian oil and gas leases. This information will be used to analyze and approve applications. Response to this request is mandatory only if the operator elects to initiate drilling or reentry operations on an oil and gas lease. The BLM would like you to know that you do not have to respond to this or any other Federal agency-sponsored information collection unless it displays a currently valid OMB control number.

BURDEN HOURS STATEMENT: Public reporting burden for this form is estimated to average 8 hours per response, including the time for reviewing instructions, gathering and maintaining data, and completing and reviewing the form. Direct comments regarding the burden estimate or any other aspect of this form to U.S. Department of the Interior, Bureau of Land Management (1004-0137), Bureau Information Collection Clearance Officer (WO-630), 1849 C Street, N.W., Mail Stop 401 LS, Washington, D.C. 20240.

Additional Operator Remarks

Location of Well

1. SHL: SESE / 185 FSL / 380 FEL / TWSP: 26S / RANGE: 31E / SECTION: 12 / LAT: 32.0507184 / LONG: -103.7242938 (TVD: 0 feet, MD: 0 feet)
PPP: SENE / 2667 FNL / 990 FEL / TWSP: 26S / RANGE: 31E / SECTION: 12 / LAT: 32.057593 / LONG: -103.72594 (TVD: 11708 feet, MD: 14100 feet)
PPP: SESE / 330 FSL / 990 FEL / TWSP: 26S / RANGE: 31E / SECTION: 12 / LAT: 32.051192 / LONG: -103.725917 (TVD: 11684 feet, MD: 11900 feet)
BHL: NENE / 330 FNL / 990 FEL / TWSP: 26S / RANGE: 31E / SECTION: 12 / LAT: 32.0639703 / LONG: -103.7262645 (TVD: 11708 feet, MD: 16489 feet)

BLM Point of Contact

Name: Tenille Ortiz

Title: Legal Instruments Examiner

Phone: 5752342224

Email: tortiz@blm.gov

Review and Appeal Rights

A person contesting a decision shall request a State Director review. This request must be filed within 20 working days of receipt of the Notice with the appropriate State Director (see 43 CFR 3165.3). The State Director review decision may be appealed to the Interior Board of Land Appeals, 801 North Quincy Street, Suite 300, Arlington, VA 22203 (see 43 CFR 3165.4). Contact the above listed Bureau of Land Management office for further information.

JUN 27 2018

DRILLING CONDITIONS OF APPROVAL

RECEIVED

OPERATOR'S NAME:	Mewbourne Oil Company
LEASE NO.:	NMNM-120904
WELL NAME & NO.:	Sumideros 12 W1PA Federal Com 2H
SURFACE HOLE FOOTAGE:	0185' FSL & 0380' FEL
BOTTOM HOLE FOOTAGE	0330' FNL & 0990' FEL
LOCATION:	Section 12, T. 26 S., R 31 E., NMPM
COUNTY:	County, New Mexico

I. DRILLING

A. DRILLING OPERATIONS REQUIREMENTS

The BLM is to be notified in advance for a representative to witness:

- a. Spudding well (minimum of 24 hours)
- b. Setting and/or Cementing of all casing strings (minimum of 4 hours)
- c. BOPE tests (minimum of 4 hours)

☐ **Eddy County**

Call the Carlsbad Field Office, 620 East Greene St., Carlsbad, NM 88220,
(575) 361-2822

Communitization Agreement

The operator will submit a Communitization Agreement to the Carlsbad Field Office, 620 E Greene St. Carlsbad, New Mexico 88220, at least 90 days before the anticipated date of first production from a well subject to a spacing order issued by the New Mexico Oil Conservation Division. The Communitization Agreement will include the signatures of all working interest owners in all Federal and Indian leases subject to the Communitization Agreement (i.e., operating rights owners and lessees of record), or certification that the operator has obtained the written signatures of all such owners and will make those signatures available to the BLM immediately upon request.

If the operator does not comply with this condition of approval, the BLM may take enforcement actions that include, but are not limited to, those specified in 43 CFR 3163.1.

In addition, the well sign shall include the surface and bottom hole lease numbers. When the Communitization Agreement number is known, it shall also be on the sign.

1. **Hydrogen Sulfide (H₂S) monitors shall be installed prior to drilling out the surface shoe. If H₂S is detected in concentrations greater than 100 ppm, the**

Hydrogen Sulfide area shall meet Onshore Order 6 requirements, which includes equipment and personnel/public protection items. If Hydrogen Sulfide is encountered, provide measured values and formations to the BLM.

2. Unless the production casing has been run and cemented or the well has been properly plugged, the drilling rig shall not be removed from over the hole without prior approval. **If the drilling rig is removed without approval – an Incident of Non-Compliance will be written and will be a “Major” violation.**
3. Floor controls are required for 3M or Greater systems. These controls will be on the rig floor, unobstructed, readily accessible to the driller and will be operational at all times during drilling and/or completion activities. Rig floor is defined as the area immediately around the rotary table; the area immediately above the substructure on which the draw works is located, this does not include the dog house or stairway area.
4. **The record of the drilling rate along with the GR/N well log run from TD to surface (horizontal well – vertical portion of hole) shall be submitted to the BLM office as well as all other logs run on the borehole 30 days from completion. If available, a digital copy of the logs is to be submitted in addition to the paper copies. The Rustler top and top and bottom of Salt are to be recorded on the Completion Report.**

B. CASING

Changes to the approved APD casing program need prior approval if the items substituted are of lesser grade or different casing size or are Non-API. The Operator can exchange the components of the proposal with that of superior strength (i.e. changing from J-55 to N-80, or from 36# to 40#). Changes to the approved cement program need prior approval if the altered cement plan has less volume or strength or if the changes are substantial (i.e. Multistage tool, ECP, etc.). The initial wellhead installed on the well will remain on the well with spools used as needed.

Centralizers required on surface casing per Onshore Order 2.III.B.1.f.

Wait on cement (WOC) for Water Basin:

After cementing but before commencing any tests, the casing string shall stand cemented under pressure until both of the following conditions have been met: 1) cement reaches a minimum compressive strength of 500 psi at the shoe, 2) until cement has been in place at least 8 hours. WOC time will be recorded in the driller's log. See individual casing strings for details regarding lead cement slurry requirements.

Provide compressive strengths including hours to reach required 500 pounds compressive strength prior to cementing each casing string. Have well specific cement details onsite prior to pumping the cement for each casing string.

No pea gravel permitted for remedial or fall back remedial without prior authorization from the BLM engineer.

High Cave/Karst

Possibility of water flows in the Salado and Castile.

Possibility of lost circulation in the Rustler, Red Beds, and Delaware.

Abnormal pressures may be encountered upon penetrating the 3rd Bone Spring Sandstone and all subsequent formations.

A MINIMUM OF TWO CASING STRINGS CEMENTED TO SURFACE IS REQUIRED IN HIGH CAVE/KARST AREAS. THE CEMENT MUST BE IN A SOLID SHEATH. THEREFORE, ONE INCH OPERATIONS ARE NOT SUFFICIENT TO PROTECT CAVE KARST RESOURCES. A CASING DESIGN THAT HAS A ONE INCH JOB PERFORMED DOES NOT COUNT AS A SOLID SHEATH. IF THE PRIMARY CEMENT JOB ON THE SURFACE CASING DOES NOT CIRCULATE, THEN THE NEXT TWO CASING STRINGS MUST BE CEMENTED TO SURFACE.

- 1. The 13-3/8 inch surface casing shall be set at approximately 1275 feet (a minimum of 25 feet into the Rustler Anhydrite and above the salt) and cemented to the surface. If salt is encountered, set casing at least 25 feet above the salt.**
 - a. If cement does not circulate to the surface, the appropriate BLM office shall be notified and a temperature survey utilizing an electronic type temperature survey with surface log readout will be used or a cement bond log shall be run to verify the top of the cement. Temperature survey will be run a minimum of six hours after pumping cement and ideally between 8-10 hours after completing the cement job.**
 - b. Wait on cement (WOC) time for a primary cement job is to include the lead cement slurry.**
 - c. Wait on cement (WOC) time for a remedial job will be a minimum of 4 hours after bringing cement to surface or 500 pounds compressive strength, whichever is greater.**
 - d. If cement falls back, remedial cementing will be done prior to drilling out that string.**

Formation below the 13-3/8" shoe to be tested according to Onshore Order 2.III.B.1.i. Test to be done as a mud equivalency test using the mud weight necessary for the pore pressure of the formation below the shoe and the mud weight for the bottom of the hole. Report results to BLM office.

2. The minimum required fill of cement behind the 9-5/8 inch intermediate casing is:

- ☐ Cement to surface. If cement does not circulate see B.1.a, c-d above. **Wait on cement (WOC) time for a primary cement job is to include the lead cement slurry due to cave/karst.**

If cement does not circulate to surface on the intermediate casing, the cement on the production casing must come to surface.

Formation below the 9-5/8" shoe to be tested according to Onshore Order 2.III.B.1.i. Test to be done as a mud equivalency test using the mud weight necessary for the pore pressure of the formation below the shoe (not the mud weight required to prevent dissolving the salt formation) and the mud weight for the bottom of the hole. Report results to BLM office.

Centralizers required through the curve and a minimum of one every other joint.

3. The minimum required fill of cement behind the 7 inch production casing is:

Operator has proposed DV tool at depth of 5460', but will adjust cement proportionately if moved. DV tool shall be set a minimum of 50' below previous shoe and a minimum of 200' above current shoe. Operator shall submit sundry if DV tool depth cannot be set in this range.

a. First stage to DV tool: _____

- ☐ Cement to circulate. If cement does not circulate, contact the appropriate BLM office before proceeding with second stage cement job. Operator should have plans as to how they will achieve approved top of cement on the next stage.

b. Second stage above DV tool:

- ☐ Cement should tie-back at least 200 feet into previous casing string. Operator shall provide method of verification.

Formation below the 7" shoe to be tested according to Onshore Order 2.III.B.1.i. Test to be done as a mud equivalency test using the mud weight necessary for the pore pressure of the formation below the shoe and the mud weight for the bottom of the hole. Report results to BLM office.

4. The minimum required fill of cement behind the 4-1/2 inch production Liner is:
- ☐ Cement as proposed by operator. Operator shall provide method of verification.
5. If hardband drill pipe is rotated inside casing, returns will be monitored for metal. If metal is found in samples, drill pipe will be pulled and rubber protectors which have a larger diameter than the tool joints of the drill pipe will be installed prior to continuing drilling operations.

C. **PRESSURE CONTROL**

1. All blowout preventer (BOP) and related equipment (BOPE) shall comply with well control requirements as described in Onshore Oil and Gas Order No. 2 and API 53.
2. Variance approved to use flex line from BOP to choke manifold. Check condition of flexible line from BOP to choke manifold, replace if exterior is damaged or if line fails test. Line to be as straight as possible with no hard bends and is to be anchored according to Manufacturer's requirements. The flexible hose can be exchanged with a hose of equal size and equal or greater pressure rating. **Anchor requirements, specification sheet and hydrostatic pressure test certification matching the hose in service, to be onsite for review. These documents shall be posted in the company man's trailer and on the rig floor.** If the BLM inspector questions the straightness of the hose, a BLM engineer will be contacted and will review in the field or via picture supplied by inspector to determine if changes are required (operator shall expect delays if this occurs).
3. **Operator has proposed a multi-bowl wellhead assembly. This assembly will only be tested when installed on the surface casing. Minimum working pressure of the blowout preventer (BOP) and related equipment (BOPE) required for drilling below the surface casing shoe shall be psi.**
 - a. **Wellhead shall be installed by manufacturer's representatives, submit documentation with subsequent sundry.**
 - b. **If the welding is performed by a third party, the manufacturer's representative shall monitor the temperature to verify that it does not exceed the maximum temperature of the seal.**
 - c. **Manufacturer representative shall install the test plug for the initial BOP test.**
 - d. **Operator shall perform the 9-5/8" and 7" casing integrity tests to 70% of the casing burst. This will test the multi-bowl seals.**
 - e. **If the cement does not circulate and one inch operations would have been possible with a standard wellhead, the well head shall be cut off, cementing operations performed and another wellhead installed.**

5M system requires an HCR valve, remote kill line and annular to match. The remote kill line is to be installed prior to testing the system and tested to stack pressure.

4. The appropriate BLM office shall be notified a minimum of hours in advance for a representative to witness the tests.
 - a. In a water basin, for all casing strings utilizing slips, these are to be set as soon as the crew and rig are ready and any fallback cement remediation has been done. The casing cut-off and BOP installation can be initiated four hours after installing the slips, which will be approximately six hours after bumping the plug. For those casing strings not using slips, the minimum wait time before cut-off is eight hours after bumping the plug. BOP/BOPE testing can begin after cut-off or once cement reaches 500 psi compressive strength (including lead when specified), whichever is greater. However, if the float does not hold, cut-off cannot be initiated until cement reaches 500 psi compressive strength (including lead when specified).
 - a. The tests shall be done by an independent service company utilizing a test plug **not a cup or J-packer.**
 - b. The test shall be run on a 5000 psi chart for a 2-3M BOP/BOP, on a 10000 psi chart for a 5M BOP/BOPE and on a 15000 psi chart for a 10M BOP/BOPE. If a linear chart is used, it shall be a one hour chart. A circular chart shall have a maximum 2 hour clock. If a twelve hour or twenty-four hour chart is used, tester shall make a notation that it is run with a two hour clock.
 - c. The results of the test shall be reported to the appropriate BLM office.
 - d. All tests are required to be recorded on a calibrated test chart. **A copy of the BOP/BOPE test chart and a copy of independent service company test will be submitted to the appropriate BLM office.**
 - e. The BOP/BOPE test shall include a low pressure test from 250 to 300 psi. The test will be held for a minimum of 10 minutes if test is done with a test plug and 30 minutes without a test plug. This test shall be performed prior to the test at full stack pressure.
 - f. BOP/BOPE must be tested by an independent service company within 500 feet of the top of the **Wolfcamp** formation if the time between the setting of the intermediate casing and reaching this depth exceeds 20 days. This test does not exclude the test prior to drilling out the casing shoe as per Onshore Order No. 2.

D. DRILLING MUD

Mud system monitoring equipment, with derrick floor indicators and visual and audio alarms, shall be operating before drilling into the **Wolfcamp** formation, and shall be used until production casing is run and cemented.

E. DRILL STEM TEST

If drill stem tests are performed, Onshore Order 2.III.D shall be followed.

F. WASTE MATERIAL AND FLUIDS

All waste (i.e. drilling fluids, trash, salts, chemicals, sewage, gray water, etc.) created as a result of drilling operations and completion operations shall be safely contained and disposed of properly at a waste disposal facility. No waste material or fluid shall be disposed of on the well location or surrounding area.

Porto-johns and trash containers will be on-location during fracturing operations or any other crew-intensive operations.

JAM 013118

JUN 27 2018

RECEIVED

**PECOS DISTRICT
SURFACE USE
CONDITIONS OF APPROVAL**

OPERATOR'S NAME:	Mewbourne Oil Co
LEASE NO.:	NM120904
WELL NAME & NO.:	2H- Sumideros 12 W1PA Fed Com
SURFACE HOLE	185'/S & 380'/E
FOOTAGE:	
BOTTOM HOLE FOOTAGE	330'/N & 990'/E
LOCATION:	Section 12, T. 26 S., R. 31 E.
COUNTY:	Eddy County, New Mexico

TABLE OF CONTENTS

Standard Conditions of Approval (COA) apply to this APD. If any deviations to these standards exist or special COAs are required, the section with the deviation or requirement will be checked below.

- ☐ **General Provisions**
- ☐ **Permit Expiration**
- ☐ **Archaeology, Paleontology, and Historical Sites**
- ☐ **Noxious Weeds**
- ☒ **Special Requirements**
 - Phantom Banks Heronries
 - Cave/Karst
 - Watershed
- ☐ **Construction**
 - Notification
 - Topsoil
 - Closed Loop System
 - Federal Mineral Material Pits
 - Well Pads
 - Roads
- ☐ **Road Section Diagram**
- ☐ **Production (Post Drilling)**
 - Well Structures & Facilities
- ☐ **Interim Reclamation**
- ☐ **Final Abandonment & Reclamation**

I. GENERAL PROVISIONS

The approval of the Application For Permit To Drill (APD) is in compliance with all applicable laws and regulations: 43 Code of Federal Regulations 3160, the lease terms, Onshore Oil and Gas Orders, Notices To Lessees, New Mexico Oil Conservation Division (NMOCD) Rules, National Historical Preservation Act As Amended, and instructions and orders of the Authorized Officer. Any request for a variance shall be submitted to the Authorized Officer on Form 3160-5, Sundry Notices and Report on Wells.

II. PERMIT EXPIRATION

If the permit terminates prior to drilling and drilling cannot be commenced within 60 days after expiration, an operator is required to submit Form 3160-5, Sundry Notices and Reports on Wells, requesting surface reclamation requirements for any surface disturbance. However, if the operator will be able to initiate drilling within 60 days after the expiration of the permit, the operator must have set the conductor pipe in order to allow for an extension of 60 days beyond the expiration date of the APD. (Filing of a Sundry Notice is required for this 60 day extension.)

III. ARCHAEOLOGICAL, PALEONTOLOGY & HISTORICAL SITES

Any cultural and/or paleontological resource discovered by the operator or by any person working on the operator's behalf shall immediately report such findings to the Authorized Officer. The operator is fully accountable for the actions of their contractors and subcontractors. The operator shall suspend all operations in the immediate area of such discovery until written authorization to proceed is issued by the Authorized Officer. An evaluation of the discovery shall be made by the Authorized Officer to determine the appropriate actions that shall be required to prevent the loss of significant cultural or scientific values of the discovery. The operator shall be held responsible for the cost of the proper mitigation measures that the Authorized Officer assesses after consultation with the operator on the evaluation and decisions of the discovery. Any unauthorized collection or disturbance of cultural or paleontological resources may result in a shutdown order by the Authorized Officer.

IV. NOXIOUS WEEDS

The operator shall be held responsible if noxious weeds become established within the areas of operations. Weed control shall be required on the disturbed land where noxious weeds exist, which includes the roads, pads, associated pipeline corridor, and adjacent land affected by the establishment of weeds due to this action. The operator shall consult with the Authorized Officer for

acceptable weed control methods, which include following EPA and BLM requirements and policies.

V. SPECIAL REQUIREMENT(S)

Phantom Banks Heronries

Surface disturbance will not be allowed within up to 200 meters of active heronries or by delaying activity for up to 120 days, or a combination of both.

Exhaust noise from engines must be muffled or otherwise controlled so as not to exceed 75 db measured at 30 ft. from the source of the noise.

Cave and Karst

** Depending on location, additional Drilling, Casing, and Cementing procedures may be required by engineering to protect critical karst groundwater recharge areas.

Cave/Karst Surface Mitigation

The following stipulations will be applied to minimize impacts during construction, drilling and production.

Construction:

In the advent that any underground voids are opened up during construction activities, construction activities will be halted and the BLM will be notified immediately.

No Blasting:

No blasting will be utilized for pad construction. The pad will be constructed and leveled by adding the necessary fill and caliche.

Pad Berming:

- The entire perimeter of the well pad will be bermed to prevent oil, salt, and other chemical contaminants from leaving the well pad.
- The compacted berm shall be constructed at a minimum of 12 inches high with impermeable mineral material (e.g. caliche).
- No water flow from the uphill side(s) of the pad shall be allowed to enter the well pad.
- The topsoil stockpile shall be located outside the bermed well pad.
- Topsoil, either from the well pad or surrounding area, shall not be used to construct the berm.
- No storm drains, tubing or openings shall be placed in the berm.
- If fluid collects within the bermed area, the fluid must be vacuumed into a safe container and disposed of properly at a state approved facility.
- The integrity of the berm shall be maintained around the surfaced pad throughout the life of the well and around the downsized pad after interim reclamation has been completed.
- Any access road entering the well pad shall be constructed so that the integrity of the berm height surrounding the well pad is not compromised. (Any access road crossing the berm cannot be lower than the berm height.)

Tank Battery Liners and Berms:

Tank battery locations and all facilities will be lined and bermed. A 20 mil permanent liner will be installed with a 4 oz. felt backing, or equivalent, to prevent tears or punctures. Tank battery berms must be large enough to contain 1 ½ times the content of the largest tank.

Leak Detection System:

A method of detecting leaks is required. The method could incorporate gauges to measure loss, siting valves and lines so they can be visually inspected, or installing electronic sensors to alarm when a leak is present. Leak detection plan will be submitted to BLM for approval.

Automatic Shut-off Systems:

Automatic shut off, check valves, or similar systems will be installed for pipelines and tanks to minimize the effects of catastrophic line failures used in production or drilling.

Cave/Karst Subsurface Mitigation

The following stipulations will be applied to protect cave/karst and ground water concerns:

Rotary Drilling with Fresh Water:

Fresh water will be used as a circulating medium in zones where caves or karst features are expected. SEE ALSO: Drilling COAs for this well.

Directional Drilling:

Kick off for directional drilling will occur at least 100 feet below the bottom of the cave occurrence zone. SEE ALSO: Drilling COAs for this well.

Lost Circulation:

ALL lost circulation zones from the surface to the base of the cave occurrence zone will be logged and reported in the drilling report.

Regardless of the type of drilling machinery used, if a void of four feet or more and circulation losses greater than 70 percent occur simultaneously while drilling in any cave-bearing zone, the BLM will be notified immediately by the operator. The BLM will assess the situation and work with the operator on corrective actions to resolve the problem.

Abandonment Cementing:

Upon well abandonment in high cave karst areas additional plugging conditions of approval may be required. The BLM will assess the situation and work with the operator to ensure proper plugging of the wellbore.

Pressure Testing:

Annual pressure monitoring will be performed by the operator on all casing annuli and reported in a sundry notice. If the test results indicated a casing failure has occurred, remedial action will be undertaken to correct the problem to the BLM's approval.

Watershed

- The entire well pad will be bermed to prevent oil, salt, and other chemical contaminants from leaving the well pad. Topsoil shall not be used to construct the berm. No water flow from the uphill side(s) of the pad shall be allowed to enter the well pad. The berm shall be maintained through the life of the well and after interim reclamation has been completed.
- Any water erosion that may occur due to the construction of the well pad during the life of the well will be quickly corrected and proper measures will be taken to prevent future erosion.
- Exhaust noise from pump jack engines must be muffled or otherwise controlled so as not to exceed 75 db measured at 30 ft. from the source of the noise.

VI. CONSTRUCTION

A. NOTIFICATION

The BLM shall administer compliance and monitor construction of the access road and well pad. Notify the Carlsbad Field Office at (575) 234-5909 at least 3 working days prior to commencing construction of the access road and/or well pad.

When construction operations are being conducted on this well, the operator shall have the approved APD and Conditions of Approval (COA) on the well site and they shall be made available upon request by the Authorized Officer.

B. TOPSOIL

The operator shall strip the top portion of the soil (root zone) from the entire well pad area and stockpile the topsoil along the edge of the well pad as depicted in the APD. The root zone is typically six (6) inches in depth. All the stockpiled topsoil will be redistributed over the interim reclamation areas. Topsoil shall not be used for berming the pad or facilities. For final reclamation, the topsoil shall be spread over the entire pad area for seeding preparation.

Other subsoil (below six inches) stockpiles must be completely segregated from the topsoil stockpile. Large rocks or subsoil clods (not evident in the surrounding terrain) must be buried within the approved area for interim and final reclamation.

C. CLOSED LOOP SYSTEM

Tanks are required for drilling operations: No Pits.

The operator shall properly dispose of drilling contents at an authorized disposal site.

D. FEDERAL MINERAL MATERIALS PIT

Payment shall be made to the BLM prior to removal of any federal mineral materials. Call the Carlsbad Field Office at (575) 234-5972.

E. WELL PAD SURFACING

Surfacing of the well pad is not required.

If the operator elects to surface the well pad, the surfacing material may be required to be removed at the time of reclamation. The well pad shall be constructed in a manner which creates the smallest possible surface disturbance, consistent with safety and operational needs.

F. EXCLOSURE FENCING (CELLARS & PITS)

Exclosure Fencing

The operator will install and maintain exclosure fencing for all open well cellars to prevent access to public, livestock, and large forms of wildlife before and after drilling operations until the pit is free of fluids and the operator initiates backfilling. (For examples of exclosure fencing design, refer to BLM's Oil and Gas Gold Book, Exclosure Fence Illustrations, Figure 1, Page 18.)

G. ON LEASE ACCESS ROADS

Road Width

The access road shall have a driving surface that creates the smallest possible surface disturbance and does not exceed fourteen (14) feet in width. The maximum width of surface disturbance, when constructing the access road, shall not exceed twenty-five (25) feet.

Surfacing

Surfacing material is not required on the new access road driving surface. If the operator elects to surface the new access road or pad, the surfacing material may be required to be removed at the time of reclamation.

Where possible, no improvements should be made on the unsurfaced access road other than to remove vegetation as necessary, road irregularities, safety issues, or to fill low areas that may sustain standing water.

The Authorized Officer reserves the right to require surfacing of any portion of the access road at any time deemed necessary. Surfacing may be required in the event the road deteriorates, erodes, road traffic increases, or it is determined to be beneficial for future field development. The surfacing depth and type of material will be determined at the time of notification.

Crowning

Crowning shall be done on the access road driving surface. The road crown shall have a grade of approximately 2% (i.e., a 1" crown on a 14' wide road). The road shall conform to Figure 1; cross section and plans for typical road construction.

Ditching

Ditching shall be required on both sides of the road.

Turnouts

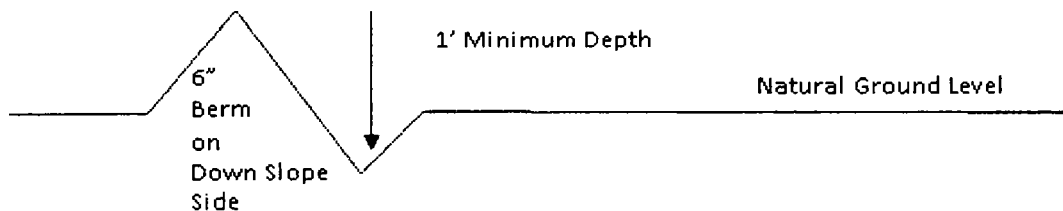
Vehicle turnouts shall be constructed on the road. Turnouts shall be intervisible with interval spacing distance less than 1000 feet. Turnouts shall conform to Figure 1; cross section and plans for typical road construction.

Drainage

Drainage control systems shall be constructed on the entire length of road (e.g. ditches, sidehill out sloping and insloping, lead-off ditches, culvert installation, and low water crossings).

A typical lead-off ditch has a minimum depth of 1 foot below and a berm of 6 inches above natural ground level. The berm shall be on the down-slope side of the lead-off ditch.

Cross Section of a Typical Lead-off Ditch



All lead-off ditches shall be graded to drain water with a 1 percent minimum to 3 percent maximum ditch slope. The spacing interval are variable for lead-off ditches and shall be determined according to the formula for spacing intervals of

lead-off ditches, but may be amended depending upon existing soil types and centerline road slope (in %);

Formula for Spacing Interval of Lead-off Ditches

Example - On a 4% road slope that is 400 feet long, the water flow shall drain water into a lead-off ditch. Spacing interval shall be determined by the following formula:

$$400 \text{ foot road with } 4\% \text{ road slope: } \frac{400'}{4\%} + 100' = 200' \text{ lead-off ditch interval}$$

Cattle guards

An appropriately sized cattle guard sufficient to carry out the project shall be installed and maintained at fence/road crossings. Any existing cattle guards on the access road route shall be repaired or replaced if they are damaged or have deteriorated beyond practical use. The operator shall be responsible for the condition of the existing cattle guards that are in place and are utilized during lease operations.

Fence Requirement

Where entry is granted across a fence line, the fence shall be braced and tied off on both sides of the passageway prior to cutting. The operator shall notify the private surface landowner or the grazing allotment holder prior to crossing any fences.

Public Access

Public access on this road shall not be restricted by the operator without specific written approval granted by the Authorized Officer.

Construction Steps

1. Salvage topsoil
2. Construct road

3. Redistribute topsoil
4. Revegetate slopes

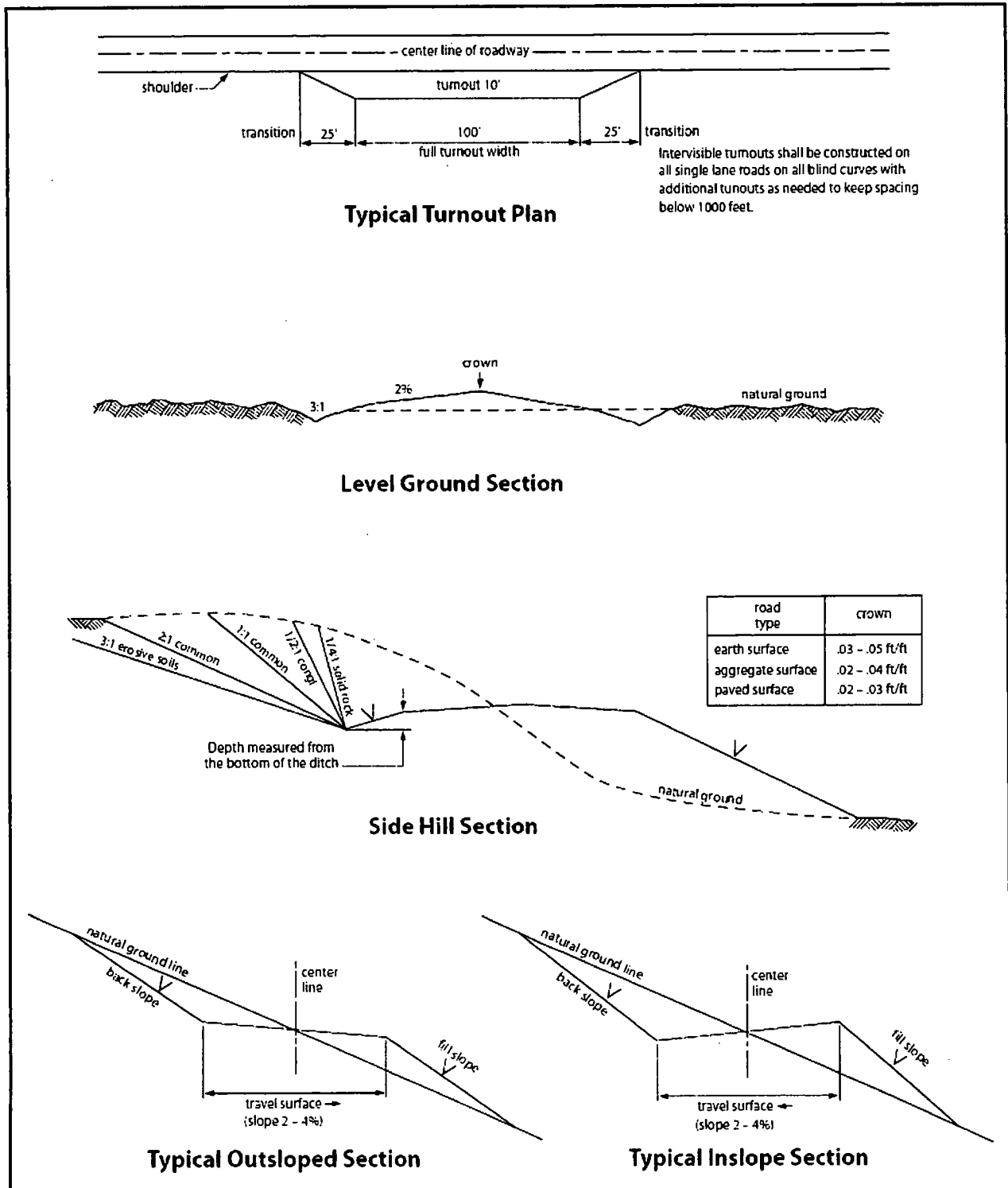


Figure 1. Cross-sections and plans for typical road sections representative of BLM resource or FS local and higher-class roads.

VII. PRODUCTION (POST DRILLING)

A. WELL STRUCTURES & FACILITIES

Placement of Production Facilities

Production facilities should be placed on the well pad to allow for maximum interim recontouring and revegetation of the well location.

Exclosure Netting (Open-top Tanks)

Immediately following active drilling or completion operations, the operator will take actions necessary to prevent wildlife and livestock access, including avian wildlife, to all open-topped tanks that contain or have the potential to contain salinity sufficient to cause harm to wildlife or livestock, hydrocarbons, or Resource Conservation and Recovery Act of 1976-exempt hazardous substances. At a minimum, the operator will net, screen, or cover open-topped tanks to exclude wildlife and livestock and prevent mortality. If the operator uses netting, the operator will cover and secure the open portion of the tank to prevent wildlife entry. The operator will net, screen, or cover the tanks until the operator removes the tanks from the location or the tanks no longer contain substances that could be harmful to wildlife or livestock. Use a maximum netting mesh size of 1 ½ inches. The netting must not be in contact with fluids and must not have holes or gaps.

Chemical and Fuel Secondary Containment and Exclosure Screening

The operator will prevent all hazardous, poisonous, flammable, and toxic substances from coming into contact with soil and water. At a minimum, the operator will install and maintain an impervious secondary containment system for any tank or barrel containing hazardous, poisonous, flammable, or toxic substances sufficient to contain the contents of the tank or barrel and any drips, leaks, and anticipated precipitation. The operator will dispose of fluids within the containment system that do not meet applicable state or U. S. Environmental Protection Agency livestock water standards in accordance with state law; the operator must not drain the fluids to the soil or ground. The operator will design, construct, and maintain all secondary containment systems to prevent wildlife and livestock exposure to harmful substances. At a minimum, the operator will install effective wildlife and livestock exclosure systems such as fencing, netting, expanded metal mesh, lids, and grate covers. Use a maximum netting mesh size of 1 ½ inches.

Open-Vent Exhaust Stack Exclosures

The operator will construct, modify, equip, and maintain all open-vent exhaust stacks on production equipment to prevent birds and bats from entering, and to discourage perching, roosting, and nesting. *(Recommended exclosure structures on open-vent exhaust stacks are in the shape of a cone.)* Production

equipment includes, but may not be limited to, tanks, heater-treaters, separators, dehydrators, flare stacks, in-line units, and compressor mufflers.

Containment Structures

Proposed production facilities such as storage tanks and other vessels will have a secondary containment structure that is constructed to hold the capacity of 1.5 times the largest tank, plus freeboard to account for precipitation, unless more stringent protective requirements are deemed necessary.

Painting Requirement

All above-ground structures including meter housing that are not subject to safety requirements shall be painted a flat non-reflective paint color, **Shale Green** from the BLM Standard Environmental Color Chart (CC-001: June 2008).

INTERIM RECLAMATION

During the life of the development, all disturbed areas not needed for active support of production operations should undergo interim reclamation in order to minimize the environmental impacts of development on other resources and uses.

Within six (6) months of well completion, operators should work with BLM surface management specialists (Jim Amos: 575-234-5909) to devise the best strategies to reduce the size of the location. Interim reclamation should allow for remedial well operations, as well as safe and efficient removal of oil and gas.

During reclamation, the removal of caliche is important to increasing the success of revegetating the site. Removed caliche that is free of contaminants may be used for road repairs, fire walls or for building other roads and locations. In order to operate the well or complete workover operations, it may be necessary to drive, park and operate on restored interim vegetation within the previously disturbed area. Disturbing revegetated areas for production or workover operations will be allowed. If there is significant disturbance and loss of vegetation, the area will need to be revegetated. Communicate with the appropriate BLM office for any exceptions/exemptions if needed.

All disturbed areas after they have been satisfactorily prepared need to be reseeded with the seed mixture provided below.

Upon completion of interim reclamation, the operator shall submit a Sundry Notices and Reports on Wells, Subsequent Report of Reclamation (Form 3160-5).

VIII. FINAL ABANDONMENT & RECLAMATION

At final abandonment, well locations, production facilities, and access roads must undergo "final" reclamation so that the character and productivity of the land are restored.

Earthwork for final reclamation must be completed within six (6) months of well plugging. All pads, pits, facility locations and roads must be reclaimed to a satisfactory revegetated, safe, and stable condition, unless an agreement is made with the landowner or BLM to keep the road and/or pad intact.

After all disturbed areas have been satisfactorily prepared, these areas need to be revegetated with the seed mixture provided below. Seeding should be accomplished by drilling on the contour whenever practical or by other approved methods. Seeding may need to be repeated until revegetation is successful, as determined by the BLM.

Operators shall contact a BLM surface protection specialist prior to surface abandonment operations for site specific objectives (Jim Amos: 575-234-5909).

Seed Mixture 2, for Sandy Sites

The holder shall seed all disturbed areas with the seed mixture listed below. The seed mixture shall be planted in the amounts specified in pounds of pure live seed (PLS)* per acre. There shall be no primary or secondary noxious weeds in the seed mixture. Seed will be tested and the viability testing of seed will be done in accordance with State law (s) and within nine (9) months prior to purchase. Commercial seed will be either certified or registered seed. The seed container will be tagged in accordance with State law(s) and available for inspection by the authorized officer.

Seed will be planted using a drill equipped with a depth regulator to ensure proper depth of planting where drilling is possible. The seed mixture will be evenly and uniformly planted over the disturbed area (smaller/heavier seeds have a tendency to drop the bottom of the drill and are planted first). The holder shall take appropriate measures to ensure this does not occur. Where drilling is not possible, seed will be broadcast and the area shall be raked or chained to cover the seed. When broadcasting the seed, the pounds per acre are to be doubled. The seeding will be repeated until a satisfactory stand is established as determined by the authorized officer. Evaluation of growth will not be made before completion of at least one full growing season after seeding.

Species to be planted in pounds of pure live seed* per acre:

<u>Species</u>	<u>lb/acre</u>
Sand dropseed (<i>Sporobolus cryptandrus</i>)	1.0
Sand love grass (<i>Eragrostis trichodes</i>)	1.0
Plains bristlegrass (<i>Setaria macrostachya</i>)	2.0

*Pounds of pure live seed:

Pounds of seed x percent purity x percent germination = pounds pure live seed



U.S. Department of the Interior
BUREAU OF LAND MANAGEMENT

Operator Certification Data Report

06/25/2018

Operator Certification

I hereby certify that I, or someone under my direct supervision, have inspected the drill site and access route proposed herein; that I am familiar with the conditions which currently exist; that I have full knowledge of state and Federal laws applicable to this operation; that the statements made in this APD package are, to the best of my knowledge, true and correct; and that the work associated with the operations proposed herein will be performed in conformity with this APD package and the terms and conditions under which it is approved. I also certify that I, or the company I represent, am responsible for the operations conducted under this application. These statements are subject to the provisions of 18 U.S.C. 1001 for the filing of false statements.

NAME: Bradley Bishop

Signed on: 10/19/2017

Title: Regulatory

Street Address: PO Box 5270

City: Hobbs

State: NM

Zip: 88240

Phone: (575)393-5905

Email address: bbishop@mewbourne.com

Field Representative

Representative Name:

Street Address:

City:

State:

Zip:

Phone:

Email address:

APD ID: 10400023477**Submission Date:** 10/31/2017**Operator Name:** MEWBOURNE OIL COMPANY**Well Name:** SUMIDEROS 12 W1PA FED COM**Well Number:** 2H**Well Type:** CONVENTIONAL GAS WELL**Well Work Type:** Drill
[Show Final Text](#)**Section 1 - General****APD ID:** 10400023477**Tie to previous NOS?****Submission Date:** 10/31/2017**BLM Office:** CARLSBAD**User:** Bradley Bishop**Title:** Regulatory**Federal/Indian APD:** FED**Is the first lease penetrated for production Federal or Indian?** FED**Lease number:** NMNM 120904**Lease Acres:****Surface access agreement in place?****Allotted?****Reservation:****Agreement in place?** NO**Federal or Indian agreement:****Agreement number:****Agreement name:****Keep application confidential?** YES**Permitting Agent?** NO**APD Operator:** MEWBOURNE OIL COMPANY**Operator letter of designation:** Sumideros12W1PAFedCom2H_productionfacilitymap_20171019100040.pdf**Operator Info****Operator Organization Name:** MEWBOURNE OIL COMPANY**Operator Address:** PO Box 5270**Zip:** 88240**Operator PO Box:****Operator City:** Hobbs**State:** NM**Operator Phone:** (575)393-5905**Operator Internet Address:****Section 2 - Well Information****Well in Master Development Plan?** NO**Mater Development Plan name:****Well in Master SUPO?** NO**Master SUPO name:****Well in Master Drilling Plan?** NO**Master Drilling Plan name:****Well Name:** SUMIDEROS 12 W1PA FED COM**Well Number:** 2H**Well API Number:****Field/Pool or Exploratory?** Field and Pool**Field Name:** PURPLE-SAGE
WOLFCAMP GAS**Pool Name:** WOLFCAMP**Is the proposed well in an area containing other mineral resources?** USEABLE WATER,NATURAL GAS,OIL

Operator Name: MEWBOURNE OIL COMPANY

Well Name: SUMIDEROS 12 W1PA FED COM

Well Number: 2H

Describe other minerals:

Is the proposed well in a Helium production area? N

Use Existing Well Pad? NO

New surface disturbance?

Type of Well Pad: MULTIPLE WELL

Multiple Well Pad Name:

Number: 2

Well Class: HORIZONTAL

SUMIDEROS 12 PA PAD

Number of Legs:

Well Work Type: Drill

Well Type: CONVENTIONAL GAS WELL

Describe Well Type:

Well sub-Type: APPRAISAL

Describe sub-type:

Distance to town: 25 Miles

Distance to nearest well: 50 FT

Distance to lease line: 185 FT

Reservoir well spacing assigned acres Measurement: 320 Acres

Well plat: Sumideros12W1PAFedCom2H_wellplat_20171019100211.pdf

Well work start Date: 01/19/2018

Duration: 60 DAYS

Section 3 - Well Location Table

Survey Type: RECTANGULAR

Describe Survey Type:

Datum: NAD83

Vertical Datum: NAVD88

Survey number:

	NS-Foot	NS Indicator	EW-Foot	EW Indicator	Twsp	Range	Section	Aliquot/Lot/Tract	Latitude	Longitude	County	State	Meridian	Lease Type	Lease Number	Elevation	MD	TVD
SHL Leg #1	185	FSL	380	FEL	26S	31E	12	Aliquot SESE	32.05071 84	- 103.7242 938	EDD Y	NEW MEXI CO	NEW MEXI CO	F	NMNM 120904	320 9	0	0
KOP Leg #1	185	FSL	380	FEL	26S	31E	12	Aliquot SESE	32.05071 84	- 103.7242 938	EDD Y	NEW MEXI CO	NEW MEXI CO	F	NMNM 120904	- 792 6	111 35	111 35
PPP Leg #1	330	FSL	990	FEL	26S	31E	12	Aliquot SESE	32.05119 2	- 103.7259 17	EDD Y	NEW MEXI CO	NEW MEXI CO	F	NMNM 120904	- 847 5	119 00	116 84

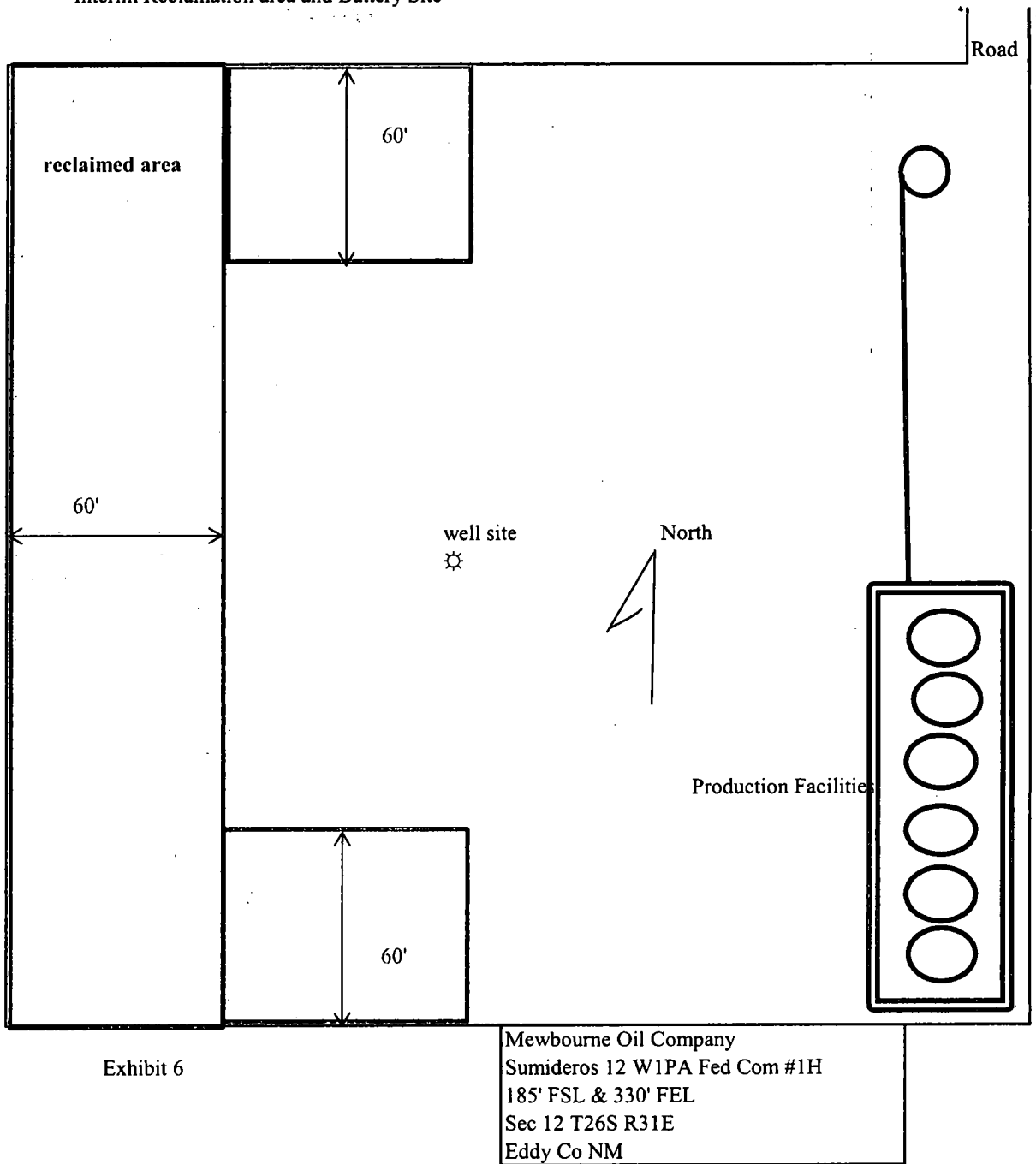
Operator Name: MEWBOURNE OIL COMPANY

Well Name: SUMIDEROS 12 W1PA FED COM

Well Number: 2H

	NS-Foot	NS Indicator	EW-Foot	EW Indicator	Twsp	Range	Section	Aliquot/Lot/Tract	Latitude	Longitude	County	State	Meridian	Lease Type	Lease Number	Elevation	MD	TVD
PPP Leg #1	266 7	FNL	990	FEL	26S	31E	12	Aliquot SENE	32.05759 3	- 103.7259 4	EDD Y	NEW MEXI CO	NEW MEXI CO	F	NMNM 089057	- 849 9	141 00	117 08
EXIT Leg #1	330	FNL	990	FEL	26S	31E	12	Aliquot NENE	32.06397 03	- 103.7262 645	EDD Y	NEW MEXI CO	NEW MEXI CO	F	NMNM 089057	- 849 9	164 89	117 08
BHL Leg #1	330	FNL	990	FEL	26S	31E	12	Aliquot NENE	32.06397 03	- 103.7262 645	EDD Y	NEW MEXI CO	NEW MEXI CO	F	NMNM 089057	- 849 9	164 89	117 08

Interim Reclamation area and Battery Site



Operator Name: MEWBOURNE OIL COMPANY**Well Name:** SUMIDEROS 12 W1PA FED COM**Well Number:** 2H**Pressure Rating (PSI):** 5M**Rating Depth:** 16500**Equipment:** Annular, Pipe Ram, Blind Ram**Requesting Variance?** YES

Variance request: A variance is requested for the use of a flexible choke line from the BOP to Choke Manifold. Anchors are not required by the manufacturer. A multibowl wellhead is being used. See attached schematic.

Testing Procedure: BOP/BOPE will be tested by an independent service company to 250 psi low and the high pressure indicated above per Onshore Order 2 requirements. The System may be upgraded to a higher pressure but still tested to the working pressure listed in the table above. If the system is upgraded all the components installed will be functional and tested. Pipe rams will be operationally checked each 24 hour period. Blind rams will be operationally checked on each trip out of the hole. These checks will be noted on the daily tour sheets. Other accessories to the BOP equipment will include a Kelly cock and floor safety valve (inside BOP) and choke lines and choke manifold.

Choke Diagram Attachment:

Sumideros_12_W1PA_Fed_Com_2H_5M_BOPE_Choke_Diagram_20171019155404.pdf

Sumideros_12_W1PA_Fed_Com_2H_Flex_Line_Specs_20171019155408.pdf

BOP Diagram Attachment:

Sumideros_12_W1PA_Fed_Com_2H_5M_BOPE_Schematic_20171019155454.pdf

Sumideros_12_W1PA_Fed_Com_2H_Multi_Bowl_WH_20171019155457.pdf

Section 3 - Casing

Casing ID	String Type	Hole Size	Csg Size	Condition	Standard	Tapered String	Top Set MD	Bottom Set MD	Top Set TVD	Bottom Set TVD	Top Set MSL	Bottom Set MSL	Calculated casing length MD	Grade	Weight	Joint Type	Collapse SF	Burst SF	Joint SF Type	Joint SF	Body SF Type	Body SF
1	SURFACE	17.5	13.375	NEW	API	N	0	1425	0	1425	1425		1425	H-40	48	STC	1.69	4.09	DRY	11.7	DRY	10.98
2	INTERMEDIATE	12.25	9.625	NEW	API	Y	0	4235	0	4235			4235	J-55	40	LTC	1.13	1.96	DRY	2.91	DRY	4.54
3	PRODUCTION	8.75	7.0	NEW	API	N	0	11865	0	11670			11865	P-110	26	LTC	1.35	1.72	DRY	2.12	DRY	2.69
4	LINER	6.125	4.5	NEW	API	N	11135	16500	11135	11708			5365	P-110	13.5	LTC	1.35	1.57	DRY	4.67	DRY	5.83

Casing Attachments

Operator Name: MEWBOURNE OIL COMPANY

Well Name: SUMIDEROS 12 W1PA FED COM

Well Number: 2H

Casing Attachments

Casing ID: 1 **String Type:** SURFACE

Inspection Document:

Spec Document:

Tapered String Spec:

Casing Design Assumptions and Worksheet(s):

Sumideros_12_W1PA_Fed_Com_2H_Csg_Assumptions_20171019161917.pdf

Casing ID: 2 **String Type:** INTERMEDIATE

Inspection Document:

Spec Document:

Tapered String Spec:

Sumideros_12_W1PA_Fed_Com_2H_TaperedCsg_20171019161303.pdf

Casing Design Assumptions and Worksheet(s):

Sumideros_12_W1PA_Fed_Com_2H_Csg_Assumptions_20171019162717.pdf

Casing ID: 3 **String Type:** PRODUCTION

Inspection Document:

Spec Document:

Tapered String Spec:

Casing Design Assumptions and Worksheet(s):

Sumideros_12_W1PA_Fed_Com_2H_Csg_Assumptions_20171019162935.pdf

Operator Name: MEWBOURNE OIL COMPANY

Well Name: SUMIDEROS 12 W1PA FED COM

Well Number: 2H

Casing Attachments

Casing ID: 4 String Type: LINER

Inspection Document:

Spec Document:

Tapered String Spec:

Casing Design Assumptions and Worksheet(s):

Sumideros_12_W1PA_Fed_Com_2H_Csg_Assumptions_20171019163141.pdf

Section 4 - Cement

String Type	Lead/Tail	Stage Tool Depth	Top MD	Bottom MD	Quantity(sx)	Yield	Density	Cu Ft	Excess%	Cement type	Additives
SURFACE	Lead		0	1233	815	2.12	12.5	1728	100	Class C	Salt, Gel, Extender, LCM
SURFACE	Tail		1233	1425	200	1.34	14.8	268	100	Class C	Retarder
INTERMEDIATE	Lead		0	3595	715	2.12	12.5	1516	25	Class C	Salt, Gel, Extender, LCM
INTERMEDIATE	Tail		3595	4235	200	1.34	14.8	268	25	Class C	Retarder
PRODUCTION	Lead	5460	4035	4783	70	2.12	12.5	148	25	Class C	Gel, Retarder, Defoamer, Extender
PRODUCTION	Tail		4783	5460	100	1.34	14.8	134	25	Class C	Retarder
PRODUCTION	Lead	5460	5460	9375	350	2.12	12.5	742	25	Class C	Gel, Retarder, Defoamer, Extender
PRODUCTION	Tail		9375	11865	400	1.18	15.6	472	25	Class H	Retarder, Fluid Loss, Defoamer
LINER	Lead		11135	16500	220	2.97	11.2	653	25	Class C	Salt, Gel, Fluid Loss, Retarder, Dispersant, Defoamer, Anti-Settling Agent

Operator Name: MEWBOURNE OIL COMPANY

Well Name: SUMIDEROS 12 W1PA FED COM

Well Number: 2H

Section 5 - Circulating Medium

Mud System Type: Closed

Will an air or gas system be Used? NO

Description of the equipment for the circulating system in accordance with Onshore Order #2:

Diagram of the equipment for the circulating system in accordance with Onshore Order #2:

Describe what will be on location to control well or mitigate other conditions: Lost circulation material Sweeps Mud scavengers in surface hole

Describe the mud monitoring system utilized: Pason/PVT/Visual Monitoring

Circulating Medium Table

Top Depth	Bottom Depth	Mud Type	Min Weight (lbs/gal)	Max Weight (lbs/gal)	Density (lbs/cu ft)	Gel Strength (lbs/100 sqft)	PH	Viscosity (CP)	Salinity (ppm)	Filtration (cc)	Additional Characteristics
0	1425	SPUD MUD	8.6	8.8							
1425	4235	SALT SATURATED	10	10							
4235	1113 5	WATER-BASED MUD	8.6	9.7							
1113 5	1170 8	OIL-BASED MUD	10	13							MW up to 13.0 ppg may be required for shale control. The highest MW needed to balance formation pressure is expected to be 12.0 ppg.

Operator Name: MEWBOURNE OIL COMPANY

Well Name: SUMIDEROS 12 W1PA FED COM

Well Number: 2H

Section 6 - Test, Logging, Coring

List of production tests including testing procedures, equipment and safety measures:

Will run GR/CNL from KOP (11135') to surface

List of open and cased hole logs run in the well:

CNL,DS,GR,MWD,MUDLOG

Coring operation description for the well:

None

Section 7 - Pressure

Anticipated Bottom Hole Pressure: 7306

Anticipated Surface Pressure: 4730.24

Anticipated Bottom Hole Temperature(F): 165

Anticipated abnormal pressures, temperatures, or potential geologic hazards? NO

Describe:

Contingency Plans geohazards description:

Contingency Plans geohazards attachment:

Hydrogen Sulfide drilling operations plan required? YES

Hydrogen sulfide drilling operations plan:

Sumideros_12_W1PA_Fed_Com_2H_H2S_Plan_20171019172000.pdf

Section 8 - Other Information

Proposed horizontal/directional/multi-lateral plan submission:

Sumideros_12_W1PA_Fed_Com_2H_Dir_Plot_20171019172026.pdf

Sumideros_12_W1PA_Fed_Com_2H_Dir_Plan_20171019172027.pdf

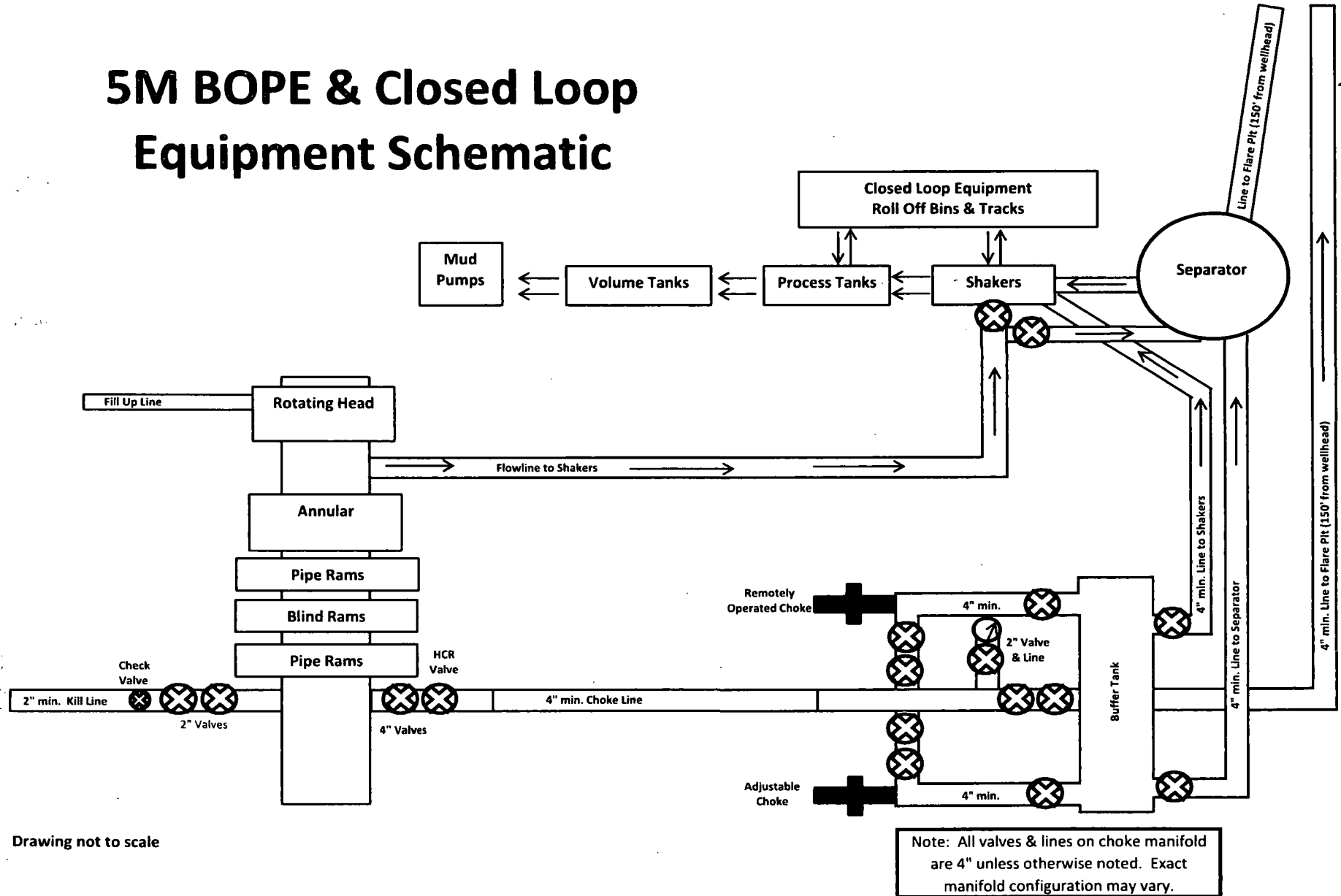
Other proposed operations facets description:

Other proposed operations facets attachment:

Sumideros_12_W1PA_Fed_Com_2H_Drlg_Program_20171019172059.doc

Other Variance attachment:

5M BOPE & Closed Loop Equipment Schematic



Drawing not to scale



GATES E & S NORTH AMERICA, INC.
134 44TH STREET
CORPUS CHRISTI, TEXAS 78405

PHONE: 361-887-9807
FAX: 361-887-0812
EMAIL: Tim.Cantu@gates.com
WEB: www.gates.com

10K CEMENTING ASSEMBLY PRESSURE TEST CERTIFICATE

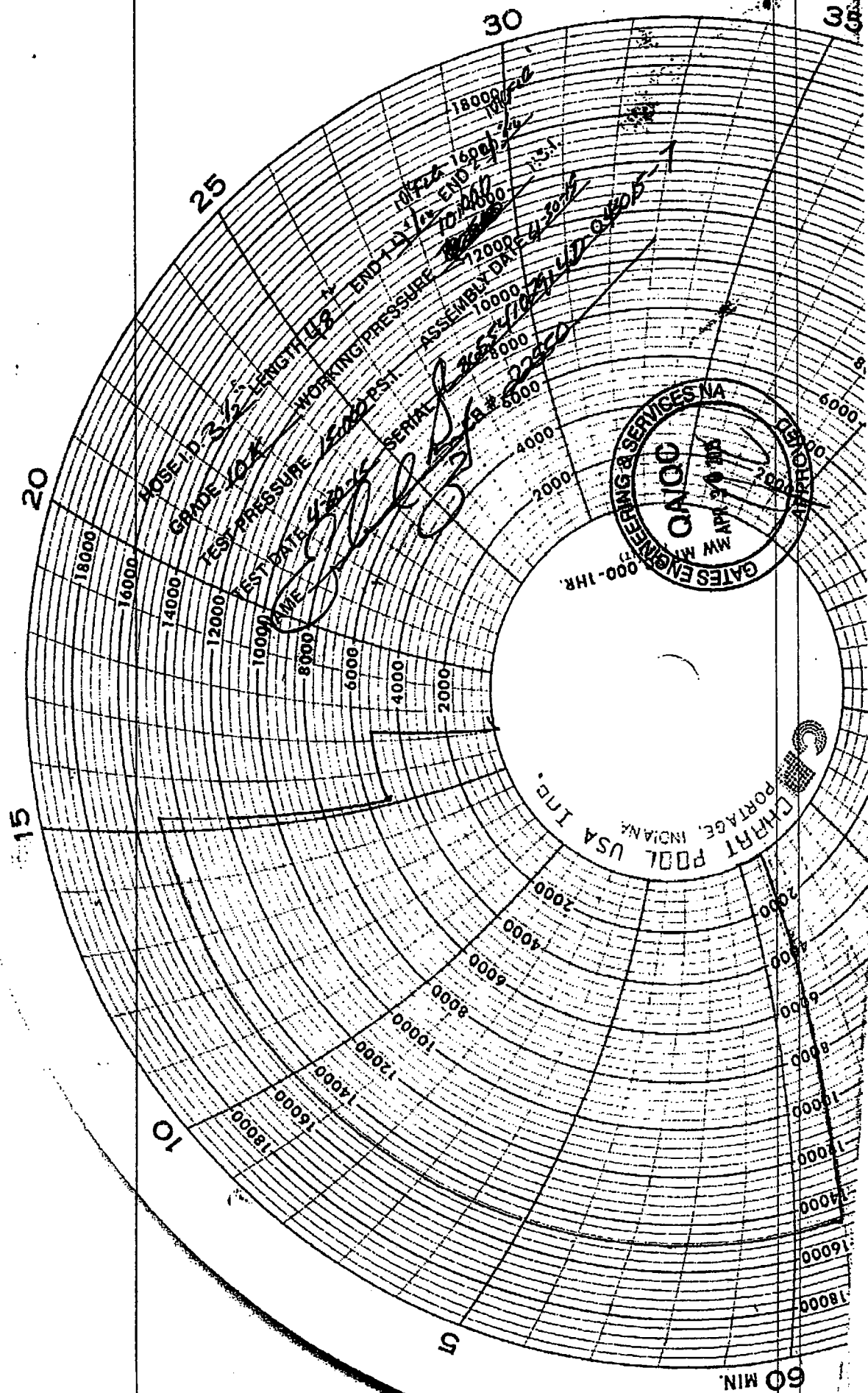
Customer :	AUSTIN DISTRIBUTING	Test Date:	4/30/2015
Customer Ref. :	4060578	Hose Serial No.:	D-043015-7
Invoice No. :	500506	Created By:	JUSTIN CROPPER
Product Description:	10K3.548.0CK4.1/1610KFLGE/E LE		
End Fitting 1 :	4 1/16 10K FLG	End Fitting 2 :	4 1/16 10K FLG
Gates Part No. :	4773-6290	Assembly Code :	L36554102914D-043015-7
Working Pressure :	10,000 PSI	Test Pressure :	15,000 PSI

Gates E & S North America, Inc. certifies that the following hose assembly has been tested to the Gates Oilfield Roughneck Agreement/Specification requirements and passed the 15 minute hydrostatic test per API Spec 7K/Q1, Fifth Edition, June 2010, Test pressure 9.6.7 and per Table 9 to 15,000 psi in accordance with this product number. Hose burst pressure 9.6.7.2 exceeds the minimum of 2.5 times the working pressure per Table 9.

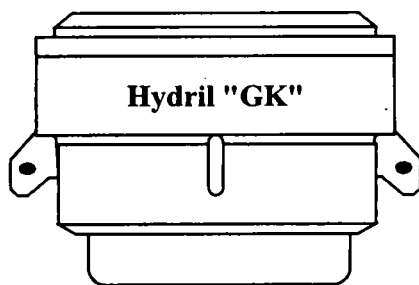
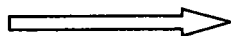
Quality Manager :	QUALITY	Production:	PRODUCTION
Date :	4/30/2015	Date :	4/30/2015
Signature :		Signature :	

Form PTC - 01 Rev.02

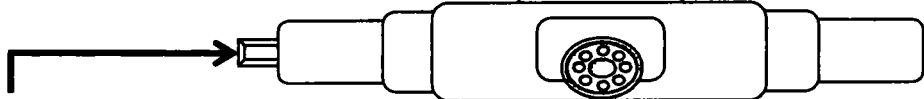
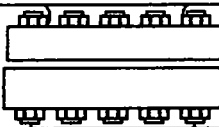




Hydril "GK"
13 5/8" 5M



Hydril "GK"

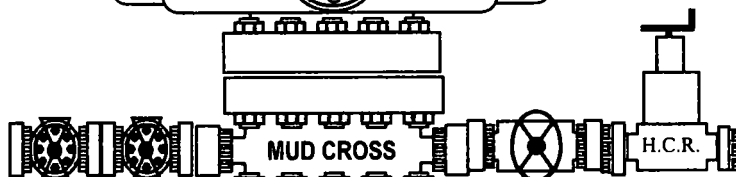


Cameron Type U
13 5/8" 5M



4 1/2" x 5 7/8" VBR

BLIND RAMS

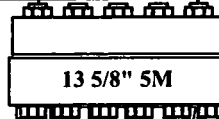


MUD CROSS

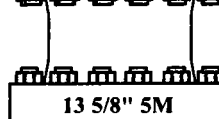
H.C.R.



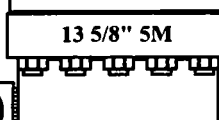
7" RAMS



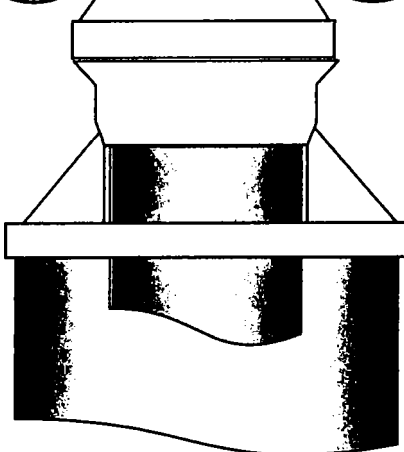
13 5/8" 5M



13 5/8" 5M



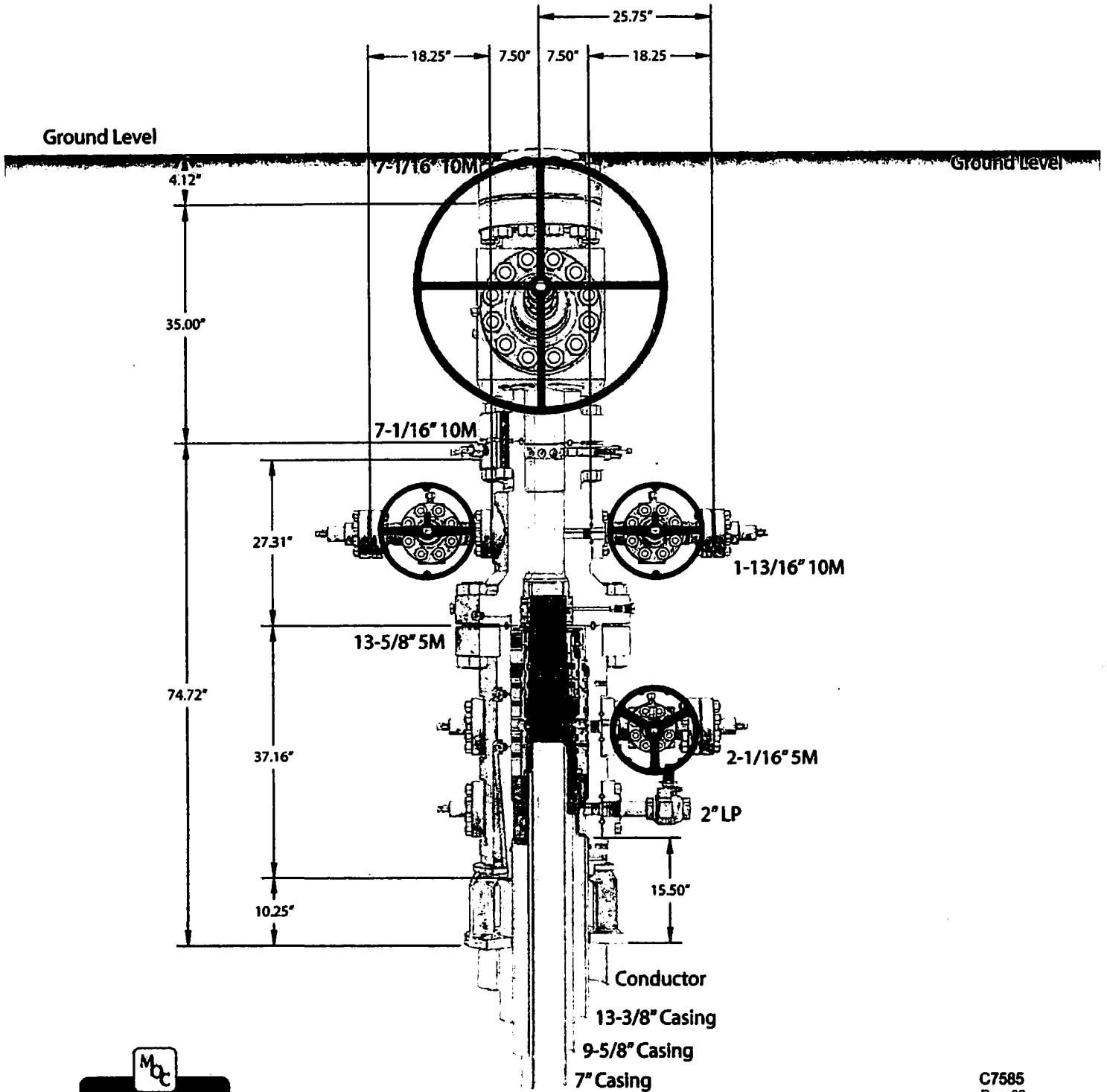
13 5/8" 5M



CAMERON

A Schlumberger Company

13-5/8" MN-DS Wellhead System

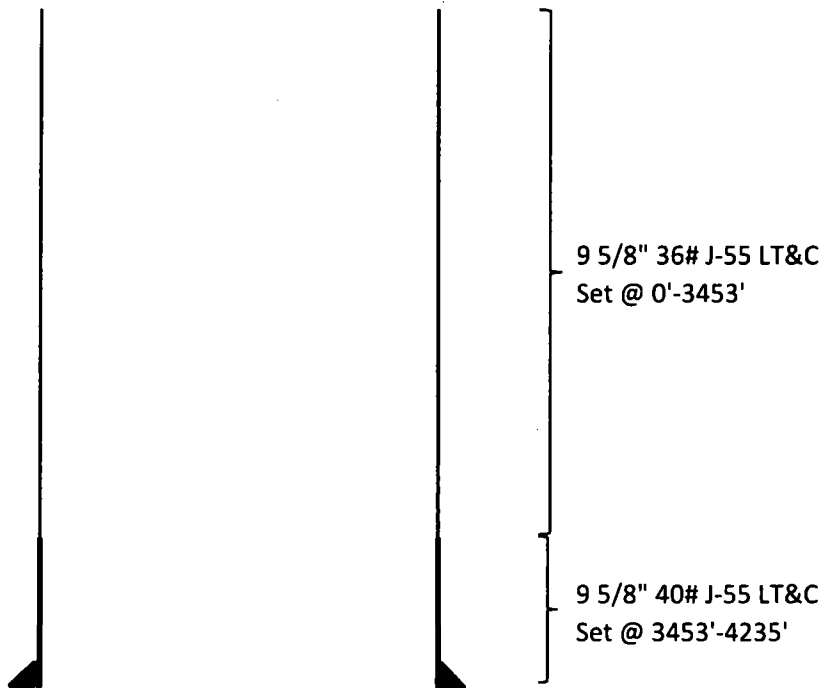


*6" piping flange 57" conductor cut-off
709*

C7585
Rev. 02

NOTE: All dimensions on this drawing are estimated measurements and should be evaluated by engineering.

Sumideros 12 W1PA Fed Com #2H
Intermediate Casing



Casing	SF Collapse	SF Burst	SF Jt Tension	SF Body Tension
36# J-55	1.13	1.96	2.91	4.54
40# J-55	1.17	1.79	16.62	20.14

Mewbourne Oil Company, Sumideros 12 W1PA Fed Com #2H
Sec 12, T26S, R31E
SL: 185' FSL & 380' FEL
BHL: 330' FNL & 990' FEL

Casing Program

Hole Size	Casing Interval		Csg. Size	Weight (lbs)	Grade	Conn.	SF Collapse	SF Burst	SF Jt Tension	SF Body Tension
	From	To								
17.5"	0'	1425'	13.375"	54.5	J55	BTC	1.69	4.09	11.70	10.98
12.25"	0'	3453'	9.625"	36	J55	LTC	1.13	1.96	2.91	4.54
12.25"	3453'	4235'	9.625"	40	J55	LTC	1.17	1.79	16.62	20.14
8.75"	0'	11865'	7"	26	HCP110	LTC	1.35	1.72	2.12	2.69
6.125"	11135'	16500'	4.5"	13.5	P110	LTC	1.35	1.57	4.67	5.83
BLM Minimum Safety Factor							1.125	1	1.6 Dry 1.8 Wet	1.6 Dry 1.8 Wet

All casing strings will be tested in accordance with Onshore Oil and Gas Order #2 III.B.1.h
Must have table for contingency casing

	Y or N
Is casing new? If used, attach certification as required in Onshore Order #1	Y
Is casing API approved? If no, attach casing specification sheet.	Y
Is premium or uncommon casing planned? If yes attach casing specification sheet.	N
Does the above casing design meet or exceed BLM's minimum standards? If not provide justification (loading assumptions, casing design criteria).	Y
Will the pipe be kept at a minimum 1/3 fluid filled to avoid approaching the collapse pressure rating of the casing?	Y
Is well located within Capitan Reef?	N
If yes, does production casing cement tie back a minimum of 50' above the Reef?	
Is well within the designated 4 string boundary.	
Is well located in SOPA but not in R-111-P?	N
If yes, are the first 2 strings cemented to surface and 3 rd string cement tied back 500' into previous casing?	
Is well located in R-111-P and SOPA?	N
If yes, are the first three strings cemented to surface?	
Is 2 nd string set 100' to 600' below the base of salt?	
Is well located in high Cave/Karst?	Y
If yes, are there two strings cemented to surface?	Y
(For 2 string wells) If yes, is there a contingency casing if lost circulation occurs?	
Is well located in critical Cave/Karst?	N
If yes, are there three strings cemented to surface?	

Mewbourne Oil Company, Sumideros 12 W1PA Fed Com #2H

Sec 12, T26S, R31E

SL: 185' FSL & 380' FEL

BHL: 330' FNL & 990' FEL

Casing Program

Hole Size	Casing Interval		Csg. Size	Weight (lbs)	Grade	Conn.	SF Collapse	SF Burst	SF Jt Tension	SF Body Tension
	From	To								
17.5"	0'	1425'	13.375"	54.5	J55	BTC	1.69	4.09	11.70	10.98
12.25"	0'	3453'	9.625"	36	J55	LTC	1.13	1.96	2.91	4.54
12.25"	3453'	4235'	9.625"	40	J55	LTC	1.17	1.79	16.62	20.14
8.75"	0'	11865'	7"	26	HCP110	LTC	1.35	1.72	2.12	2.69
6.125"	11135'	16500'	4.5"	13.5	P110	LTC	1.35	1.57	4.67	5.83
BLM Minimum Safety Factor							1.125	1	1.6 Dry 1.8 Wet	1.6 Dry 1.8 Wet

All casing strings will be tested in accordance with Onshore Oil and Gas Order #2 III.B.1.h

Must have table for contingency casing

	Y or N
Is casing new? If used, attach certification as required in Onshore Order #1	Y
Is casing API approved? If no, attach casing specification sheet.	Y
Is premium or uncommon casing planned? If yes attach casing specification sheet.	N
Does the above casing design meet or exceed BLM's minimum standards? If not provide justification (loading assumptions, casing design criteria).	Y
Will the pipe be kept at a minimum 1/3 fluid filled to avoid approaching the collapse pressure rating of the casing?	Y
Is well located within Capitan Reef?	N
If yes, does production casing cement tie back a minimum of 50' above the Reef?	
Is well within the designated 4 string boundary.	
Is well located in SOPA but not in R-111-P?	N
If yes, are the first 2 strings cemented to surface and 3 rd string cement tied back 500' into previous casing?	
Is well located in R-111-P and SOPA?	N
If yes, are the first three strings cemented to surface?	
Is 2 nd string set 100' to 600' below the base of salt?	
Is well located in high Cave/Karst?	Y
If yes, are there two strings cemented to surface?	Y
(For 2 string wells) If yes, is there a contingency casing if lost circulation occurs?	
Is well located in critical Cave/Karst?	N
If yes, are there three strings cemented to surface?	

Mewbourne Oil Company, Sumideros 12 W1PA Fed Com #2H

Sec 12, T26S, R31E

SL: 185' FSL & 380' FEL

BHL: 330' FNL & 990' FEL

Casing Program

Hole Size	Casing Interval		Csg. Size	Weight (lbs)	Grade	Conn.	SF Collapse	SF Burst	SF Jt Tension	SF Body Tension
	From	To								
17.5"	0'	1425'	13.375"	54.5	J55	BTC	1.69	4.09	11.70	10.98
12.25"	0'	3453'	9.625"	36	J55	LTC	1.13	1.96	2.91	4.54
12.25"	3453'	4235'	9.625"	40	J55	LTC	1.17	1.79	16.62	20.14
8.75"	0'	11865'	7"	26	HCP110	LTC	1.35	1.72	2.12	2.69
6.125"	11135'	16500'	4.5"	13.5	P110	LTC	1.35	1.57	4.67	5.83
BLM Minimum Safety Factor							1.125	1	1.6 Dry 1.8 Wet	1.6 Dry 1.8 Wet

All casing strings will be tested in accordance with Onshore Oil and Gas Order #2 III.B.1.h
Must have table for contingency casing

	Y or N
Is casing new? If used, attach certification as required in Onshore Order #1	Y
Is casing API approved? If no, attach casing specification sheet.	Y
Is premium or uncommon casing planned? If yes attach casing specification sheet.	N
Does the above casing design meet or exceed BLM's minimum standards? If not provide justification (loading assumptions, casing design criteria).	Y
Will the pipe be kept at a minimum 1/3 fluid filled to avoid approaching the collapse pressure rating of the casing?	Y
Is well located within Capitan Reef?	N
If yes, does production casing cement tie back a minimum of 50' above the Reef?	
Is well within the designated 4 string boundary.	
Is well located in SOPA but not in R-111-P?	N
If yes, are the first 2 strings cemented to surface and 3 rd string cement tied back 500' into previous casing?	
Is well located in R-111-P and SOPA?	N
If yes, are the first three strings cemented to surface?	
Is 2 nd string set 100' to 600' below the base of salt?	
Is well located in high Cave/Karst?	Y
If yes, are there two strings cemented to surface?	Y
(For 2 string wells) If yes, is there a contingency casing if lost circulation occurs?	
Is well located in critical Cave/Karst?	N
If yes, are there three strings cemented to surface?	

Mewbourne Oil Company, Sumideros 12 W1PA Fed Com #2H

Sec 12, T26S, R31E

SL: 185' FSL & 380' FEL

BHL: 330' FNL & 990' FEL

Casing Program

Hole Size	Casing Interval		Csg. Size	Weight (lbs)	Grade	Conn.	SF Collapse	SF Burst	SF Jt Tension	SF Body Tension
	From	To								
17.5"	0'	1425'	13.375"	54.5	J55	BTC	1.69	4.09	11.70	10.98
12.25"	0'	3453'	9.625"	36	J55	LTC	1.13	1.96	2.91	4.54
12.25"	3453'	4235'	9.625"	40	J55	LTC	1.17	1.79	16.62	20.14
8.75"	0'	11865'	7"	26	HCP110	LTC	1.35	1.72	2.12	2.69
6.125"	11135'	16500'	4.5"	13.5	P110	LTC	1.35	1.57	4.67	5.83
BLM Minimum Safety Factor							1.125	1	1.6 Dry 1.8 Wet	1.6 Dry 1.8 Wet

All casing strings will be tested in accordance with Onshore Oil and Gas Order #2 III.B.1.h
Must have table for contingency casing

	Y or N
Is casing new? If used, attach certification as required in Onshore Order #1	Y
Is casing API approved? If no, attach casing specification sheet.	Y
Is premium or uncommon casing planned? If yes attach casing specification sheet.	N
Does the above casing design meet or exceed BLM's minimum standards? If not provide justification (loading assumptions, casing design criteria).	Y
Will the pipe be kept at a minimum 1/3 fluid filled to avoid approaching the collapse pressure rating of the casing?	Y
Is well located within Capitan Reef?	N
If yes, does production casing cement tie back a minimum of 50' above the Reef?	
Is well within the designated 4 string boundary.	
Is well located in SOPA but not in R-111-P?	N
If yes, are the first 2 strings cemented to surface and 3 rd string cement tied back 500' into previous casing?	
Is well located in R-111-P and SOPA?	N
If yes, are the first three strings cemented to surface?	
Is 2 nd string set 100' to 600' below the base of salt?	
Is well located in high Cave/Karst?	Y
If yes, are there two strings cemented to surface?	Y
(For 2 string wells) If yes, is there a contingency casing if lost circulation occurs?	
Is well located in critical Cave/Karst?	N
If yes, are there three strings cemented to surface?	

Hydrogen Sulfide Drilling Operations Plan
Mewbourne Oil Company

1. General Requirements

Rule 118 does not apply to this well because MOC has researched this area and no high concentrations of H₂S were found. MOC will have on location and working all H₂S safety equipment before the Delaware formation for purposes of safety and insurance requirements.

2. Hydrogen Sulfide Training

All personnel, whether regularly assigned, contracted, or employed on an unscheduled basis, will have received training from a qualified instructor in the following areas prior to entering the drilling pad area of the well:

1. The hazards and characteristics of hydrogen sulfide gas.
2. The proper use of personal protective equipment and life support systems.
3. The proper use of hydrogen sulfide detectors, alarms, warning systems, briefing areas, evacuation procedures.
4. The proper techniques for first aid and rescue operations.

Additionally, supervisory personnel will be trained in the following areas:

- 1 The effects of hydrogen sulfide on metal components. If high tensile tubular systems are utilized, supervisory personnel will be trained in their special maintenance requirements.
- 2 Corrective action and shut in procedures, blowout prevention, and well control procedures while drilling a well.
- 3 The contents of the Hydrogen Sulfide Drilling Operations Plan.

There will be an initial training session prior to encountering a known hydrogen sulfide source. The initial training session shall include a review of the site specific Hydrogen Sulfide Drilling Operations Plan.

3. Hydrogen Sulfide Safety Equipment and Systems

All hydrogen sulfide safety equipment and systems will be installed, tested, and operational prior to drilling below the 9 5/8" intermediate casing.

1. Well Control Equipment
 - A. Choke manifold with minimum of one adjustable choke/remote choke.
 - B. Blowout preventers equipped with blind rams and pipe rams to accommodate all pipe sizes with properly sized closing unit
 - C. Auxiliary equipment including annular type blowout preventer.
2. Protective Equipment for Essential Personnel

Thirty minute self contained work unit located in the dog house and at briefing areas.

Additionally: If H₂S is encountered in concentrations less than 10 ppm, fans will be placed in work areas to prevent the accumulation of hazardous amounts of poisonous gas. If higher concentrations of H₂S are detected the well will be shut in and a rotating head, mud/gas separator, remote choke and flare line with igniter will be installed.

3. Hydrogen Sulfide Protection and Monitoring Equipment

Two portable hydrogen sulfide monitors positioned on location for optimum coverage and detection. The units shall have audible sirens to notify personnel when hydrogen sulfide levels exceed 20 PPM.

4. Visual Warning Systems

A. Wind direction indicators as indicated on the wellsite diagram.

B. Caution signs shall be posted on roads providing access to location. Signs shall be painted a high visibility color with lettering of sufficient size to be readable at reasonable distances from potentially contaminated areas.

4. **Mud Program**

The mud program has been designed to minimize the amount of hydrogen sulfide entrained in the mud system. Proper mud weight, safe drilling practices, and the use of hydrogen sulfide scavengers will minimize hazards while drilling the well.

5. **Metallurgy**

All tubular systems, wellheads, blowout preventers, drilling spools, kill lines, choke manifolds, and valves shall be suitable for service in a hydrogen sulfide environment when chemically treated.

6. **Communications**

State & County Officials phone numbers are posted on rig floor and supervisors trailer. Communications in company vehicles and toolpushers are either two way radios or cellular phones.

7. **Well Testing**

Drill stem testing is not an anticipated requirement for evaluation of this well. If a drill stem test is required, it will be conducted with a minimum number of personnel in the immediate vicinity. The test will be conducted during daylight hours only.

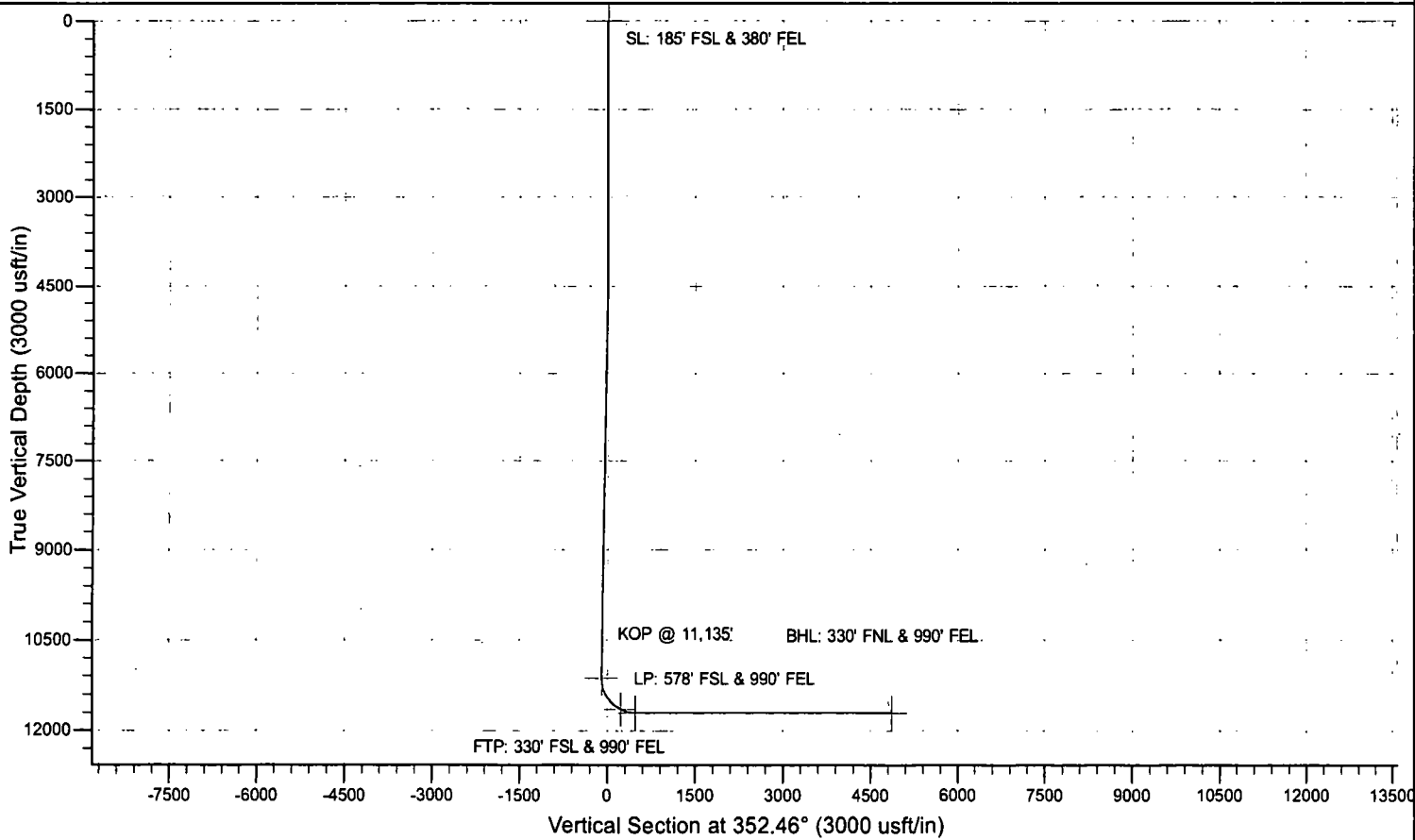
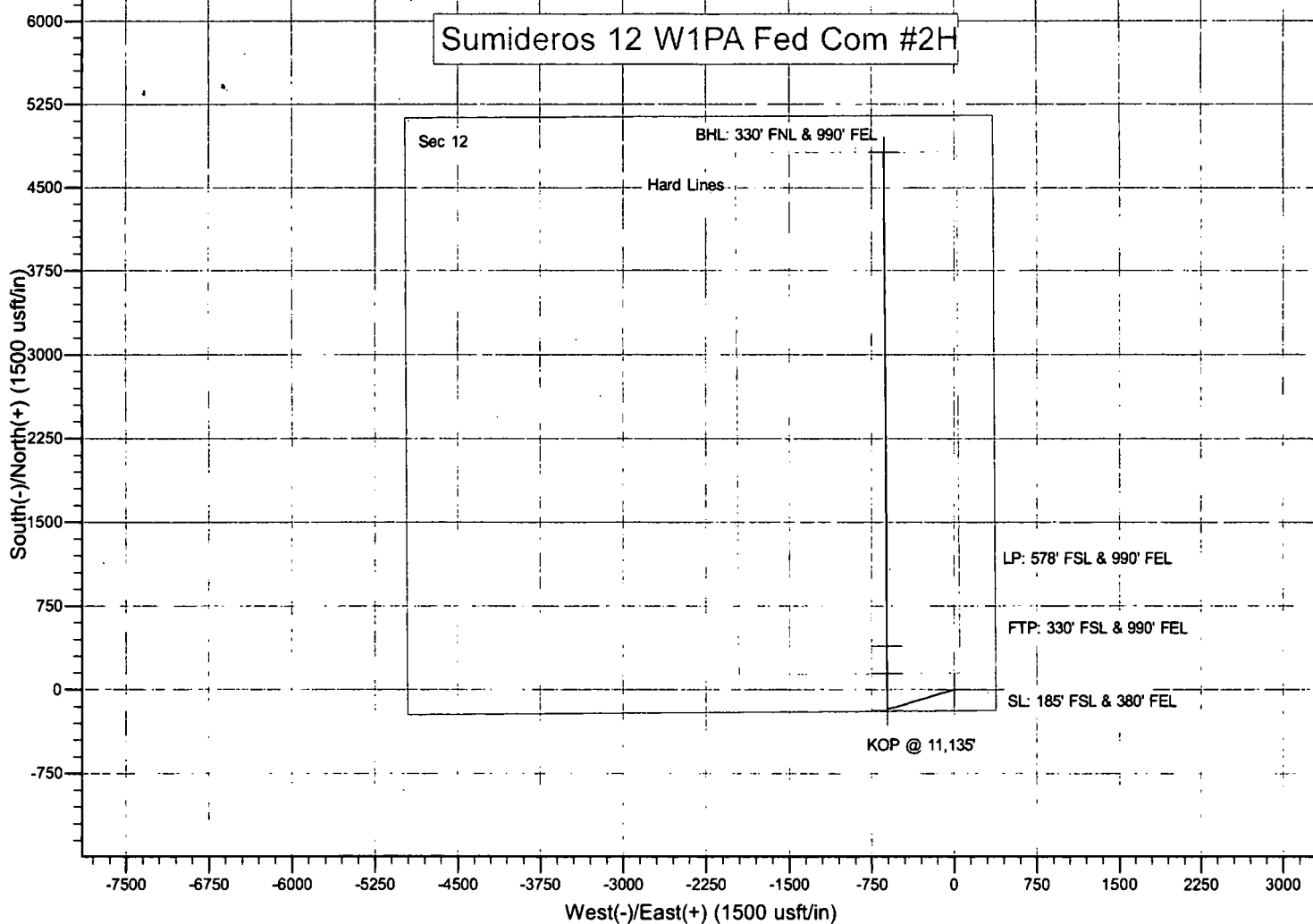
8. **Emergency Phone Numbers**

Eddy County Sheriff's Office	911 or 575-887-7551
Ambulance Service	911 or 575-885-2111
Carlsbad Fire Dept	911 or 575-885-2111
Loco Hills Volunteer Fire Dept.	911 or 575-677-3266
Closest Medical Facility - Columbia Medical Center of Carlsbad	575-492-5000

Mewbourne Oil Company	Hobbs District Office	575-393-5905
	Fax	575-397-6252
	2nd Fax	575-393-7259

District Manager	Robin Terrell	575-390-4816
Drilling Superintendent	Frosty Lathan	575-390-4103
	Bradley Bishop	575-390-6838
Drilling Foreman	Wesley Noseff	575-441-0729

Sumideros 12 W1PA Fed Com #2H



Mewbourne Oil Company

Eddy County, New Mexico NAD 83

Sumideros 12 W1PA Fed Com #2H

Sec 12, T26S, R31E

SL: 185' FSL & 380' FEL

BHL: 330' FNL & 990' FEL

Plan: Design #1

Standard Planning Report

16 October, 2017

NM OIL CONSERVATION
ARTESIA DISTRICT

JUN 27 2018

RECEIVED

Planning Report

Database: Hobbs
Company: Mewbourne Oil Company
Project: Eddy County, New Mexico NAD 83
Site: Sumideros 12 W1PA Fed Com #2H
Well: Sec 12, T26S, R31E
Wellbore: BHL: 330' FNL & 990' FEL
Design: Design #1

Local Co-ordinate Reference: Site Sumideros 12 W1PA Fed Com #2H
TVD Reference: WELL @ 3236.0usft (Original Well Elev)
MD Reference: WELL @ 3236.0usft (Original Well Elev)
North Reference: Grid
Survey Calculation Method: Minimum Curvature

Project	Eddy County, New Mexico NAD 83		
Map System:	US State Plane 1983	System Datum:	Mean Sea Level
Geo Datum:	North American Datum 1983		
Map Zone:	New Mexico Eastern Zone		

Site	Sumideros 12 W1PA Fed Com #2H			
Site Position:		Northing:	382,722.00 usft	Latitude: 32° 3' 2.591 N
From:	Map	Easting:	730,030.00 usft	Longitude: 103° 43' 27.458 W
Position Uncertainty:	0.0 usft	Slot Radius:	13-3/16 "	Grid Convergence: 0.32 °

Well	Sec 12, T26S, R31E			
Well Position	+N/-S	0.0 usft	Northing:	382,722.00 usft
	+E/-W	0.0 usft	Easting:	730,030.00 usft
Position Uncertainty	0.0 usft		Wellhead Elevation:	3,236.0 usft
			Ground Level:	3,209.0 usft

Wellbore	BHL: 330' FNL & 990' FEL				
Magnetics	Model Name	Sample Date	Declination (°)	Dip Angle (°)	Field Strength (nT)
	IGRF2010	10/16/2017	6.86	59.84	47,865

Design	Design #1			
Audit Notes:				
Version:	Phase:	PROTOTYPE	Tie On Depth:	0.0
Vertical Section:	Depth From (TVD) (usft)	+N/-S (usft)	+E/-W (usft)	Direction (°)
	0.0	0.0	0.0	352.46

Plan Sections										
Measured Depth (usft)	Inclination (°)	Azimuth (°)	Vertical Depth (usft)	+N/-S (usft)	+E/-W (usft)	Dogleg Rate (°/100usft)	Bulld Rate (°/100usft)	Turn Rate (°/100usft)	TFO (°)	Target
0.0	0.00	0.00	0.0	0.0	0.0	0.00	0.00	0.00	0.00	
4,275.0	0.00	0.00	4,275.0	0.0	0.0	0.00	0.00	0.00	0.00	
4,550.5	5.51	253.53	4,550.0	-3.8	-12.7	2.00	2.00	0.00	253.53	
10,889.7	5.51	253.53	10,860.0	-176.2	-596.3	0.00	0.00	0.00	0.00	
11,165.1	0.00	0.00	11,135.0	-180.0	-609.0	2.00	-2.00	0.00	180.00	KOP @ 11,135'
12,065.2	90.00	359.67	11,708.0	393.0	-612.3	10.00	10.00	0.00	-0.33	
16,489.3	90.00	359.67	11,708.0	4,817.0	-638.0	0.00	0.00	0.00	0.00	BHL: 330' FNL & 990'

Planning Report

Database: Hobbs
 Company: Mewbourne Oil Company
 Project: Eddy County, New Mexico NAD 83
 Site: Sumideros 12 W1PA Fed Com #2H
 Well: Sec 12, T26S, R31E
 Wellbore: BHL: 330' FNL & 990' FEL
 Design: Design #1

Local Co-ordinate Reference: Site Sumideros 12 W1PA Fed Com #2H
 TVD Reference: WELL @ 3236.0usft (Original Well Elev)
 MD Reference: WELL @ 3236.0usft (Original Well Elev)
 North Reference: Grid
 Survey Calculation Method: Minimum Curvature

Planned Survey

Measured Depth (usft)	Inclination (°)	Azimuth (°)	Vertical Depth (usft)	+N/-S (usft)	+E/-W (usft)	Vertical Section (usft)	Dogleg Rate (°/100usft)	Build Rate (°/100usft)	Turn Rate (°/100usft)
0.0	0.00	0.00	0.0	0.0	0.0	0.0	0.00	0.00	0.00
SL: 185' FSL & 380' FEL									
100.0	0.00	0.00	100.0	0.0	0.0	0.0	0.00	0.00	0.00
200.0	0.00	0.00	200.0	0.0	0.0	0.0	0.00	0.00	0.00
300.0	0.00	0.00	300.0	0.0	0.0	0.0	0.00	0.00	0.00
400.0	0.00	0.00	400.0	0.0	0.0	0.0	0.00	0.00	0.00
500.0	0.00	0.00	500.0	0.0	0.0	0.0	0.00	0.00	0.00
600.0	0.00	0.00	600.0	0.0	0.0	0.0	0.00	0.00	0.00
700.0	0.00	0.00	700.0	0.0	0.0	0.0	0.00	0.00	0.00
800.0	0.00	0.00	800.0	0.0	0.0	0.0	0.00	0.00	0.00
900.0	0.00	0.00	900.0	0.0	0.0	0.0	0.00	0.00	0.00
1,000.0	0.00	0.00	1,000.0	0.0	0.0	0.0	0.00	0.00	0.00
1,100.0	0.00	0.00	1,100.0	0.0	0.0	0.0	0.00	0.00	0.00
1,200.0	0.00	0.00	1,200.0	0.0	0.0	0.0	0.00	0.00	0.00
1,300.0	0.00	0.00	1,300.0	0.0	0.0	0.0	0.00	0.00	0.00
1,400.0	0.00	0.00	1,400.0	0.0	0.0	0.0	0.00	0.00	0.00
1,500.0	0.00	0.00	1,500.0	0.0	0.0	0.0	0.00	0.00	0.00
1,600.0	0.00	0.00	1,600.0	0.0	0.0	0.0	0.00	0.00	0.00
1,700.0	0.00	0.00	1,700.0	0.0	0.0	0.0	0.00	0.00	0.00
1,800.0	0.00	0.00	1,800.0	0.0	0.0	0.0	0.00	0.00	0.00
1,900.0	0.00	0.00	1,900.0	0.0	0.0	0.0	0.00	0.00	0.00
2,000.0	0.00	0.00	2,000.0	0.0	0.0	0.0	0.00	0.00	0.00
2,100.0	0.00	0.00	2,100.0	0.0	0.0	0.0	0.00	0.00	0.00
2,200.0	0.00	0.00	2,200.0	0.0	0.0	0.0	0.00	0.00	0.00
2,300.0	0.00	0.00	2,300.0	0.0	0.0	0.0	0.00	0.00	0.00
2,400.0	0.00	0.00	2,400.0	0.0	0.0	0.0	0.00	0.00	0.00
2,500.0	0.00	0.00	2,500.0	0.0	0.0	0.0	0.00	0.00	0.00
2,600.0	0.00	0.00	2,600.0	0.0	0.0	0.0	0.00	0.00	0.00
2,700.0	0.00	0.00	2,700.0	0.0	0.0	0.0	0.00	0.00	0.00
2,800.0	0.00	0.00	2,800.0	0.0	0.0	0.0	0.00	0.00	0.00
2,900.0	0.00	0.00	2,900.0	0.0	0.0	0.0	0.00	0.00	0.00
3,000.0	0.00	0.00	3,000.0	0.0	0.0	0.0	0.00	0.00	0.00
3,100.0	0.00	0.00	3,100.0	0.0	0.0	0.0	0.00	0.00	0.00
3,200.0	0.00	0.00	3,200.0	0.0	0.0	0.0	0.00	0.00	0.00
3,300.0	0.00	0.00	3,300.0	0.0	0.0	0.0	0.00	0.00	0.00
3,400.0	0.00	0.00	3,400.0	0.0	0.0	0.0	0.00	0.00	0.00
3,500.0	0.00	0.00	3,500.0	0.0	0.0	0.0	0.00	0.00	0.00
3,600.0	0.00	0.00	3,600.0	0.0	0.0	0.0	0.00	0.00	0.00
3,700.0	0.00	0.00	3,700.0	0.0	0.0	0.0	0.00	0.00	0.00
3,800.0	0.00	0.00	3,800.0	0.0	0.0	0.0	0.00	0.00	0.00
3,900.0	0.00	0.00	3,900.0	0.0	0.0	0.0	0.00	0.00	0.00
4,000.0	0.00	0.00	4,000.0	0.0	0.0	0.0	0.00	0.00	0.00
4,100.0	0.00	0.00	4,100.0	0.0	0.0	0.0	0.00	0.00	0.00
4,200.0	0.00	0.00	4,200.0	0.0	0.0	0.0	0.00	0.00	0.00
4,275.0	0.00	0.00	4,275.0	0.0	0.0	0.0	0.00	0.00	0.00
4,300.0	0.50	253.53	4,300.0	0.0	-0.1	0.0	2.00	2.00	0.00
4,400.0	2.50	253.53	4,400.0	-0.8	-2.6	-0.4	2.00	2.00	0.00
4,500.0	4.50	253.53	4,499.8	-2.5	-8.5	-1.4	2.00	2.00	0.00
4,550.5	5.51	253.53	4,550.0	-3.8	-12.7	-2.1	2.00	2.00	0.00
4,600.0	5.51	253.53	4,599.3	-5.1	-17.3	-2.8	0.00	0.00	0.00
4,700.0	5.51	253.53	4,698.9	-7.8	-26.5	-4.3	0.00	0.00	0.00
4,800.0	5.51	253.53	4,798.4	-10.5	-35.7	-5.8	0.00	0.00	0.00
4,900.0	5.51	253.53	4,898.0	-13.3	-44.9	-7.3	0.00	0.00	0.00
5,000.0	5.51	253.53	4,997.5	-16.0	-54.1	-8.7	0.00	0.00	0.00

Planning Report

Database: Hobbs
Company: Mewbourne Oil Company
Project: Eddy County, New Mexico NAD 83
Site: Sumideros 12 W1PA Fed Com #2H
Well: Sec 12, T26S, R31E
Wellbore: BHL: 330' FNL & 990' FEL
Design: Design #1

Local Co-ordinate Reference: Site Sumideros 12 W1PA Fed Com #2H
TVD Reference: WELL @ 3236.0usft (Original Well Elev)
MD Reference: WELL @ 3236.0usft (Original Well Elev)
North Reference: Grid
Survey Calculation Method: Minimum Curvature

Planned Survey

Measured Depth (usft)	Inclination (°)	Azimuth (°)	Vertical Depth (usft)	+N/-S (usft)	+E/-W (usft)	Vertical Section (usft)	Dogleg Rate (°/100usft)	Build Rate (°/100usft)	Turn Rate (°/100usft)
5,100.0	5.51	253.53	5,097.0	-18.7	-63.3	-10.2	0.00	0.00	0.00
5,200.0	5.51	253.53	5,196.6	-21.4	-72.5	-11.7	0.00	0.00	0.00
5,300.0	5.51	253.53	5,296.1	-24.1	-81.7	-13.2	0.00	0.00	0.00
5,400.0	5.51	253.53	5,395.7	-26.9	-90.9	-14.7	0.00	0.00	0.00
5,500.0	5.51	253.53	5,495.2	-29.6	-100.1	-16.2	0.00	0.00	0.00
5,600.0	5.51	253.53	5,594.7	-32.3	-109.3	-17.7	0.00	0.00	0.00
5,700.0	5.51	253.53	5,694.3	-35.0	-118.5	-19.2	0.00	0.00	0.00
5,800.0	5.51	253.53	5,793.8	-37.8	-127.7	-20.7	0.00	0.00	0.00
5,900.0	5.51	253.53	5,893.3	-40.5	-136.9	-22.1	0.00	0.00	0.00
6,000.0	5.51	253.53	5,992.9	-43.2	-146.1	-23.6	0.00	0.00	0.00
6,100.0	5.51	253.53	6,092.4	-45.9	-155.3	-25.1	0.00	0.00	0.00
6,200.0	5.51	253.53	6,192.0	-48.6	-164.6	-26.6	0.00	0.00	0.00
6,300.0	5.51	253.53	6,291.5	-51.4	-173.8	-28.1	0.00	0.00	0.00
6,400.0	5.51	253.53	6,391.0	-54.1	-183.0	-29.6	0.00	0.00	0.00
6,500.0	5.51	253.53	6,490.6	-56.8	-192.2	-31.1	0.00	0.00	0.00
6,600.0	5.51	253.53	6,590.1	-59.5	-201.4	-32.6	0.00	0.00	0.00
6,700.0	5.51	253.53	6,689.6	-62.2	-210.6	-34.1	0.00	0.00	0.00
6,800.0	5.51	253.53	6,789.2	-65.0	-219.8	-35.5	0.00	0.00	0.00
6,900.0	5.51	253.53	6,888.7	-67.7	-229.0	-37.0	0.00	0.00	0.00
7,000.0	5.51	253.53	6,988.3	-70.4	-238.2	-38.5	0.00	0.00	0.00
7,100.0	5.51	253.53	7,087.8	-73.1	-247.4	-40.0	0.00	0.00	0.00
7,200.0	5.51	253.53	7,187.3	-75.8	-256.6	-41.5	0.00	0.00	0.00
7,300.0	5.51	253.53	7,286.9	-78.6	-265.8	-43.0	0.00	0.00	0.00
7,400.0	5.51	253.53	7,386.4	-81.3	-275.0	-44.5	0.00	0.00	0.00
7,500.0	5.51	253.53	7,486.0	-84.0	-284.2	-46.0	0.00	0.00	0.00
7,600.0	5.51	253.53	7,585.5	-86.7	-293.4	-47.5	0.00	0.00	0.00
7,700.0	5.51	253.53	7,685.0	-89.5	-302.7	-48.9	0.00	0.00	0.00
7,800.0	5.51	253.53	7,784.6	-92.2	-311.9	-50.4	0.00	0.00	0.00
7,900.0	5.51	253.53	7,884.1	-94.9	-321.1	-51.9	0.00	0.00	0.00
8,000.0	5.51	253.53	7,983.6	-97.6	-330.3	-53.4	0.00	0.00	0.00
8,100.0	5.51	253.53	8,083.2	-100.3	-339.5	-54.9	0.00	0.00	0.00
8,200.0	5.51	253.53	8,182.7	-103.1	-348.7	-56.4	0.00	0.00	0.00
8,300.0	5.51	253.53	8,282.3	-105.8	-357.9	-57.9	0.00	0.00	0.00
8,400.0	5.51	253.53	8,381.8	-108.5	-367.1	-59.4	0.00	0.00	0.00
8,500.0	5.51	253.53	8,481.3	-111.2	-376.3	-60.9	0.00	0.00	0.00
8,600.0	5.51	253.53	8,580.9	-113.9	-385.5	-62.3	0.00	0.00	0.00
8,700.0	5.51	253.53	8,680.4	-116.7	-394.7	-63.8	0.00	0.00	0.00
8,800.0	5.51	253.53	8,779.9	-119.4	-403.9	-65.3	0.00	0.00	0.00
8,900.0	5.51	253.53	8,879.5	-122.1	-413.1	-66.8	0.00	0.00	0.00
9,000.0	5.51	253.53	8,979.0	-124.8	-422.3	-68.3	0.00	0.00	0.00
9,100.0	5.51	253.53	9,078.6	-127.5	-431.5	-69.8	0.00	0.00	0.00
9,200.0	5.51	253.53	9,178.1	-130.3	-440.8	-71.3	0.00	0.00	0.00
9,300.0	5.51	253.53	9,277.6	-133.0	-450.0	-72.8	0.00	0.00	0.00
9,400.0	5.51	253.53	9,377.2	-135.7	-459.2	-74.2	0.00	0.00	0.00
9,500.0	5.51	253.53	9,476.7	-138.4	-468.4	-75.7	0.00	0.00	0.00
9,600.0	5.51	253.53	9,576.3	-141.2	-477.6	-77.2	0.00	0.00	0.00
9,700.0	5.51	253.53	9,675.8	-143.9	-486.8	-78.7	0.00	0.00	0.00
9,800.0	5.51	253.53	9,775.3	-146.6	-496.0	-80.2	0.00	0.00	0.00
9,900.0	5.51	253.53	9,874.9	-149.3	-505.2	-81.7	0.00	0.00	0.00
10,000.0	5.51	253.53	9,974.4	-152.0	-514.4	-83.2	0.00	0.00	0.00
10,100.0	5.51	253.53	10,073.9	-154.8	-523.6	-84.7	0.00	0.00	0.00
10,200.0	5.51	253.53	10,173.5	-157.5	-532.8	-86.2	0.00	0.00	0.00
10,300.0	5.51	253.53	10,273.0	-160.2	-542.0	-87.6	0.00	0.00	0.00
10,400.0	5.51	253.53	10,372.6	-162.9	-551.2	-89.1	0.00	0.00	0.00

Planning Report

Database: Hobbs
 Company: Mewbourne Oil Company
 Project: Eddy County, New Mexico NAD 83
 Site: Sumideros 12 W1PA Fed Com #2H
 Well: Sec 12, T26S, R31E
 Wellbore: BHL: 330' FNL & 990' FEL
 Design: Design #1

Local Co-ordinate Reference: Site Sumideros 12 W1PA Fed Com #2H
 TVD Reference: WELL @ 3236.0usft (Original Well Elev)
 MD Reference: WELL @ 3236.0usft (Original Well Elev)
 North Reference: Grid
 Survey Calculation Method: Minimum Curvature

Planned Survey

Measured Depth (usft)	Inclination (°)	Azimuth (°)	Vertical Depth (usft)	+N/-S (usft)	+E/-W (usft)	Vertical Section (usft)	Dogleg Rate (°/100usft)	Build Rate (°/100usft)	Turn Rate (°/100usft)
10,500.0	5.51	253.53	10,472.1	-165.6	-560.4	-90.6	0.00	0.00	0.00
10,600.0	5.51	253.53	10,571.6	-168.4	-569.6	-92.1	0.00	0.00	0.00
10,700.0	5.51	253.53	10,671.2	-171.1	-578.8	-93.6	0.00	0.00	0.00
10,800.0	5.51	253.53	10,770.7	-173.8	-588.1	-95.1	0.00	0.00	0.00
10,889.7	5.51	253.53	10,860.0	-176.2	-596.3	-96.4	0.00	0.00	0.00
10,900.0	5.30	253.53	10,870.2	-176.5	-597.2	-96.6	2.00	-2.00	0.00
11,000.0	3.30	253.53	10,970.0	-178.7	-604.4	-97.7	2.00	-2.00	0.00
11,100.0	1.30	253.53	11,069.9	-179.8	-608.3	-98.4	2.00	-2.00	0.00
11,165.1	0.00	0.00	11,135.0	-180.0	-609.0	-98.5	2.00	-2.00	0.00
KOP @ 11,135'									
11,200.0	3.49	359.67	11,169.8	-178.9	-609.0	-97.4	10.00	10.00	0.00
11,300.0	13.49	359.67	11,268.6	-164.2	-609.1	-82.8	10.00	10.00	0.00
11,400.0	23.49	359.67	11,363.3	-132.5	-609.3	-51.4	10.00	10.00	0.00
11,500.0	33.48	359.67	11,451.1	-84.9	-609.6	-4.1	10.00	10.00	0.00
11,600.0	43.48	359.67	11,529.3	-22.8	-609.9	57.5	10.00	10.00	0.00
11,700.0	53.48	359.67	11,595.5	52.0	-610.3	131.7	10.00	10.00	0.00
11,800.0	63.48	359.67	11,647.7	137.2	-610.8	216.2	10.00	10.00	0.00
11,808.7	64.35	359.67	11,651.5	145.0	-610.9	223.9	10.00	10.00	0.00
FTP: 330' FSL & 990' FEL									
11,900.0	73.48	359.67	11,684.4	230.1	-611.4	308.4	10.00	10.00	0.00
12,000.0	83.48	359.67	11,704.3	327.9	-611.9	405.4	10.00	10.00	0.00
12,065.2	90.00	359.67	11,708.0	393.0	-612.3	470.0	10.00	10.00	0.00
LP: 578' FSL & 990' FEL									
12,100.0	90.00	359.67	11,708.0	427.8	-612.5	504.5	0.00	0.00	0.00
12,200.0	90.00	359.67	11,708.0	527.8	-613.1	603.7	0.00	0.00	0.00
12,300.0	90.00	359.67	11,708.0	627.8	-613.7	702.9	0.00	0.00	0.00
12,400.0	90.00	359.67	11,708.0	727.8	-614.3	802.1	0.00	0.00	0.00
12,500.0	90.00	359.67	11,708.0	827.8	-614.8	901.4	0.00	0.00	0.00
12,600.0	90.00	359.67	11,708.0	927.8	-615.4	1,000.6	0.00	0.00	0.00
12,700.0	90.00	359.67	11,708.0	1,027.8	-616.0	1,099.8	0.00	0.00	0.00
12,800.0	90.00	359.67	11,708.0	1,127.8	-616.6	1,199.0	0.00	0.00	0.00
12,900.0	90.00	359.67	11,708.0	1,227.8	-617.2	1,298.2	0.00	0.00	0.00
13,000.0	90.00	359.67	11,708.0	1,327.8	-617.8	1,397.4	0.00	0.00	0.00
13,100.0	90.00	359.67	11,708.0	1,427.8	-618.3	1,496.6	0.00	0.00	0.00
13,200.0	90.00	359.67	11,708.0	1,527.8	-618.9	1,595.8	0.00	0.00	0.00
13,300.0	90.00	359.67	11,708.0	1,627.8	-619.5	1,695.0	0.00	0.00	0.00
13,400.0	90.00	359.67	11,708.0	1,727.8	-620.1	1,794.2	0.00	0.00	0.00
13,500.0	90.00	359.67	11,708.0	1,827.8	-620.7	1,893.4	0.00	0.00	0.00
13,600.0	90.00	359.67	11,708.0	1,927.8	-621.2	1,992.6	0.00	0.00	0.00
13,700.0	90.00	359.67	11,708.0	2,027.8	-621.8	2,091.9	0.00	0.00	0.00
13,800.0	90.00	359.67	11,708.0	2,127.8	-622.4	2,191.1	0.00	0.00	0.00
13,900.0	90.00	359.67	11,708.0	2,227.8	-623.0	2,290.3	0.00	0.00	0.00
14,000.0	90.00	359.67	11,708.0	2,327.8	-623.6	2,389.5	0.00	0.00	0.00
14,100.0	90.00	359.67	11,708.0	2,427.8	-624.1	2,488.7	0.00	0.00	0.00
14,200.0	90.00	359.67	11,708.0	2,527.8	-624.7	2,587.9	0.00	0.00	0.00
14,300.0	90.00	359.67	11,708.0	2,627.8	-625.3	2,687.1	0.00	0.00	0.00
14,400.0	90.00	359.67	11,708.0	2,727.8	-625.9	2,786.3	0.00	0.00	0.00
14,500.0	90.00	359.67	11,708.0	2,827.8	-626.5	2,885.5	0.00	0.00	0.00
14,600.0	90.00	359.67	11,708.0	2,927.8	-627.0	2,984.7	0.00	0.00	0.00
14,700.0	90.00	359.67	11,708.0	3,027.8	-627.6	3,083.9	0.00	0.00	0.00
14,800.0	90.00	359.67	11,708.0	3,127.7	-628.2	3,183.2	0.00	0.00	0.00
14,900.0	90.00	359.67	11,708.0	3,227.7	-628.8	3,282.4	0.00	0.00	0.00
15,000.0	90.00	359.67	11,708.0	3,327.7	-629.4	3,381.6	0.00	0.00	0.00

Planning Report

Database: Hobbs
Company: Mewbourne Oil Company
Project: Eddy County, New Mexico NAD 83
Site: Sumideros 12 W1PA Fed Com #2H
Well: Sec 12, T26S, R31E
Wellbore: BHL: 330' FNL & 990' FEL
Design: Design #1

Local Co-ordinate Reference: Site Sumideros 12 W1PA Fed Com #2H
TVD Reference: WELL @ 3236.0usft (Original Well Elev)
MD Reference: WELL @ 3236.0usft (Original Well Elev)
North Reference: Grid
Survey Calculation Method: Minimum Curvature

Planned Survey

Measured Depth (usft)	Inclination (°)	Azimuth (°)	Vertical Depth (usft)	+N/-S (usft)	+E/-W (usft)	Vertical Section (usft)	Dogleg Rate (°/100usft)	Build Rate (°/100usft)	Turn Rate (°/100usft)
15,100.0	90.00	359.67	11,708.0	3,427.7	-629.9	3,480.8	0.00	0.00	0.00
15,200.0	90.00	359.67	11,708.0	3,527.7	-630.5	3,580.0	0.00	0.00	0.00
15,300.0	90.00	359.67	11,708.0	3,627.7	-631.1	3,679.2	0.00	0.00	0.00
15,400.0	90.00	359.67	11,708.0	3,727.7	-631.7	3,778.4	0.00	0.00	0.00
15,500.0	90.00	359.67	11,708.0	3,827.7	-632.3	3,877.6	0.00	0.00	0.00
15,600.0	90.00	359.67	11,708.0	3,927.7	-632.8	3,976.8	0.00	0.00	0.00
15,700.0	90.00	359.67	11,708.0	4,027.7	-633.4	4,076.0	0.00	0.00	0.00
15,800.0	90.00	359.67	11,708.0	4,127.7	-634.0	4,175.2	0.00	0.00	0.00
15,900.0	90.00	359.67	11,708.0	4,227.7	-634.6	4,274.5	0.00	0.00	0.00
16,000.0	90.00	359.67	11,708.0	4,327.7	-635.2	4,373.7	0.00	0.00	0.00
16,100.0	90.00	359.67	11,708.0	4,427.7	-635.7	4,472.9	0.00	0.00	0.00
16,200.0	90.00	359.67	11,708.0	4,527.7	-636.3	4,572.1	0.00	0.00	0.00
16,300.0	90.00	359.67	11,708.0	4,627.7	-636.9	4,671.3	0.00	0.00	0.00
16,400.0	90.00	359.67	11,708.0	4,727.7	-637.5	4,770.5	0.00	0.00	0.00
16,489.3	90.00	359.67	11,708.0	4,817.0	-638.0	4,859.1	0.00	0.00	0.00

BHL: 330' FNL & 990' FEL

Design Targets

Target Name

- hit/miss target - Shape	Dip Angle (°)	Dip Dir. (°)	TVD (usft)	+N/-S (usft)	+E/-W (usft)	Northing (usft)	Easting (usft)	Latitude	Longitude
SL: 185' FSL & 380' FEL - plan hits target center - Point	0.00	0.00	0.0	0.0	0.0	382,722.00	730,030.00	32° 3' 2.591 N	103° 43' 27.458 W
KOP @ 11,135' - plan hits target center - Point	0.00	0.00	11,135.0	-180.0	-609.0	382,542.00	729,421.00	32° 3' 0.843 N	103° 43' 34.546 W
FTP: 330' FSL & 990' FE - plan hits target center - Point	0.00	0.00	11,651.6	145.0	-610.9	382,867.00	729,419.11	32° 3' 4.060 N	103° 43' 34.547 W
LP: 578' FSL & 990' FEL - plan hits target center - Point	0.00	0.00	11,708.0	393.0	-612.3	383,115.00	729,417.70	32° 3' 6.514 N	103° 43' 34.547 W
BHL: 330' FNL & 990' FE - plan hits target center - Point	0.00	0.00	11,708.0	4,817.0	-638.0	387,539.00	729,392.00	32° 3' 50.294 N	103° 43' 34.556 W

Mewbourne Oil Company, Sumideros 12 W1PA Fed Com #2H

Sec 12, T26S, R31E

SL: 185' FSL & 380' FEL

BHL: 330' FNL & 990' FEL

1. Geologic Formations

TVD of target	11708'	Pilot hole depth	NA
MD at TD:	16500'	Deepest expected fresh water:	275'

Basin

Formation	Depth (TVD) from KB	Water/Mineral Bearing/ Target Zone?	Hazards*
Quaternary Fill	Surface		
Rustler	1350	Water	
Top Salt	1910		
Castile			
Base Salt	2610		
Yates	4100	Oil/Gas	
Lamar	4310	Oil/Gas	
Bell Canyon	4345	Oil/Gas	
Cherry Canyon	5310	Oil/Gas	
Manzanita Marker	5460		
Brushy Canyon	6850	Oil/Gas	
Bone Spring	8310	Oil/Gas	
1 st Bone Spring Sand	8360		
2 nd Bone Spring Sand	8960		
3 rd Bone Spring Sand	11220		
Abo			
Wolfcamp	11660	Target Zone	
Devonian			
Fusselman			
Ellenburger			
Granite Wash			

*H2S, water flows, loss of circulation, abnormal pressures, etc.

Mewbourne Oil Company, Sumideros 12 W1PA Fed Com #2H

Sec 12, T26S, R31E

SL: 185' FSL & 380' FEL

BHL: 330' FNL & 990' FEL

2. Casing Program

Hole Size	Casing Interval		Csg. Size	Weight (lbs)	Grade	Conn.	SF Collapse	SF Burst	SF Jt Tension	SF Body Tension
	From	To								
17.5"	0'	1425'	13.375"	54.5	J55	BTC	1.69	4.09	11.70	10.98
12.25"	0'	3453'	9.625"	36	J55	LTC	1.13	1.96	2.91	4.54
12.25"	3453'	4235'	9.625"	40	J55	LTC	1.17	1.79	16.62	20.14
8.75"	0'	11865'	7"	26	HCP110	LTC	1.35	1.72	2.12	2.69
6.125"	11135'	16500'	4.5"	13.5	P110	LTC	1.35	1.57	4.67	5.83
BLM Minimum Safety Factor			1.125	1	1.6 Dry 1.8 Wet	1.6 Dry 1.8 Wet				

All casing strings will be tested in accordance with Onshore Oil and Gas Order #2 III.B.1.h
Must have table for contingency casing

	Y or N
Is casing new? If used, attach certification as required in Onshore Order #1	Y
Is casing API approved? If no, attach casing specification sheet.	Y
Is premium or uncommon casing planned? If yes attach casing specification sheet.	N
Does the above casing design meet or exceed BLM's minimum standards? If not provide justification (loading assumptions, casing design criteria).	Y
Will the pipe be kept at a minimum 1/3 fluid filled to avoid approaching the collapse pressure rating of the casing?	Y
Is well located within Capitan Reef?	N
If yes, does production casing cement tie back a minimum of 50' above the Reef?	
Is well within the designated 4 string boundary.	
Is well located in SOPA but not in R-111-P?	N
If yes, are the first 2 strings cemented to surface and 3 rd string cement tied back 500' into previous casing?	
Is well located in R-111-P and SOPA?	N
If yes, are the first three strings cemented to surface?	
Is 2 nd string set 100' to 600' below the base of salt?	
Is well located in high Cave/Karst?	Y
If yes, are there two strings cemented to surface?	Y
(For 2 string wells) If yes, is there a contingency casing if lost circulation occurs?	
Is well located in critical Cave/Karst?	N
If yes, are there three strings cemented to surface?	

Mewbourne Oil Company, Sumideros 12 W1PA Fed Com #2H
Sec 12, T26S, R31E
SL: 185' FSL & 380' FEL
BHL: 330' FNL & 990' FEL

3. Cementing Program

Casing	# Sks	Wt. lb/ gal	Yld ft3/ sack	H ₂ O gal/ sk	500# Comp. Strength (hours)	Slurry Description
Surf.	815	12.5	2.12	11	10	Lead: Class C + Salt + Gel + Extender + LCM
	200	14.8	1.34	6.3	8	Tail: Class C + Retarder
Inter.	715	12.5	2.12	11	10	Lead: Class C + Salt + Gel + Extender + LCM
	200	14.8	1.34	6.3	8	Tail: Class C + Retarder
Prod. Stg 1	350	12.5	2.12	11	9	Lead: Class C + Gel + Retarder + Defoamer + Extender
	400	15.6	1.18	5.2	10	Tail: Class H + Retarder + Fluid Loss + Defoamer
ECP/DV Tool @ 5460'						
Prod. Stg 2	70	12.5	2.12	11	9	Lead: Class C + Gel + Retarder + Defoamer + Extender
	100	14.8	1.34	6.3	8	Tail: Class C + Retarder
Liner	220	11.2	2.97	17	16	Class C + Salt + Gel + Fluid Loss + Retarder + Dispersant + Defoamer + Anti-Settling Agent

A copy of cement test will be available on location at time of cement job providing pump times, compressive strengths, etc.

Casing String	TOC	% Excess
Surface	0'	100%
Intermediate	0'	25%
Production	4035'	25%
Liner	11135'	25%

Mewbourne Oil Company, Sumideros 12 W1PA Fed Com #2H

Sec 12, T26S, R31E

SL: 185' FSL & 380' FEL

BHL: 330' FNL & 990' FEL

4. Pressure Control Equipment

Variance: None

BOP installed and tested before drilling which hole?	Size?	System Rated WP	Type	✓	Tested to:
12-1/4"	13-5/8"	5M	Annular	X	2500#
			Blind Ram	X	5000#
			Pipe Ram	X	
			Double Ram		
			Other*		

*Specify if additional ram is utilized.

BOP/BOPE will be tested by an independent service company to 250 psi low and the high pressure indicated above per Onshore Order 2 requirements. The System may be upgraded to a higher pressure but still tested to the working pressure listed in the table above. If the system is upgraded all the components installed will be functional and tested.

Pipe rams will be operationally checked each 24 hour period. Blind rams will be operationally checked on each trip out of the hole. These checks will be noted on the daily tour sheets. Other accessories to the BOP equipment will include a Kelly cock and floor safety valve (inside BOP) and choke lines and choke manifold. See attached schematics.

X	Formation integrity test will be performed per Onshore Order #2. On Exploratory wells or on that portion of any well approved for a 5M BOPE system or greater, a pressure integrity test of each casing shoe shall be performed. Will be tested in accordance with Onshore Oil and Gas Order #2 III.B.1.i.
Y	A variance is requested for the use of a flexible choke line from the BOP to Choke Manifold. See attached for specs and hydrostatic test chart.
N	Are anchors required by manufacturer?
Y	A multibowl wellhead is being used. The BOP will be tested per Onshore Order #2 after installation on the surface casing which will cover testing requirements for a maximum of 30 days. If any seal subject to test pressure is broken the system must be tested. • Provide description here: See attached schematic.

Mewbourne Oil Company, Sumideros 12 W1PA Fed Com #2H
Sec 12, T26S, R31E
SL: 185' FSL & 380' FEL
BHL: 330' FNL & 990' FEL

5. Mud Program

Depth		Type	Weight (ppg)	Viscosity	Water Loss
From	To				
0'	1425'	Spud Mud	8.6-8.8	28-34	N/C
1425'	4235'	BW	10.0	28-34	N/C
4235'	11135'	FW w/ Polymer	8.6-9.7	28-34	N/C
11135'	16500'	OBM	10.0-13.0	30-40	<10cc

Sufficient mud materials to maintain mud properties and meet minimum lost circulation and weight increase requirements will be kept on location at all times. MW up to 13.0 ppg may be required for shale control. The highest MW needed to balance formation pressure is expected to be 12.0 ppg.

What will be used to monitor the loss or gain of fluid?	Pason/PVT/Visual Monitoring
---	-----------------------------

6. Logging and Testing Procedures

Logging, Coring and Testing.	
X	Will run GR/CNL from KOP (11135') to surface (horizontal well – vertical portion of hole). Stated logs run will be in the Completion Report and submitted to the BLM.
	No Logs are planned based on well control or offset log information.
	Drill stem test? If yes, explain
	Coring? If yes, explain

Additional logs planned		Interval
X	Gamma Ray	11135' (KOP) to TD
	Density	
	CBL	
	Mud log	
	PEX	

Mewbourne Oil Company, Sumideros 12 W1PA Fed Com #2H

Sec 12, T26S, R31E

SL: 185' FSL & 380' FEL

BHL: 330' FNL & 990' FEL

7. Drilling Conditions

Condition	Specify what type and where?
BH Pressure at deepest TVD	7306 psi
Abnormal Temperature	No

Mitigation measure for abnormal conditions. Describe. Lost circulation material/sweeps/mud scavengers in surface hole. Weighted mud for possible over-pressure in Wolfcamp formation.

Hydrogen Sulfide (H₂S) monitors will be installed prior to drilling out the surface shoe. If H₂S is detected in concentrations greater than 100 ppm, the operator will comply with the provisions of Onshore Oil and Gas Order #6. If Hydrogen Sulfide is encountered, measured values and formations will be provided to the BLM.

	H ₂ S is present
X	H ₂ S Plan attached

8. Other facets of operation

Is this a walking operation? If yes, describe.

Will be pre-setting casing? If yes, describe.

Attachments

___ Directional Plan

___ Other, describe



U.S. Department of the Interior
BUREAU OF LAND MANAGEMENT

SUPO Data Report

06/25/2018

APD ID: 10400023477

Submission Date: 10/31/2017

Operator Name: MEWBOURNE OIL COMPANY

Well Name: SUMIDEROS 12 W1PA FED COM

Well Number: 2H

Well Type: CONVENTIONAL GAS WELL

Well Work Type: Drill

Highlighted data
reflects the most
recent changes

[Show Final Text](#)

Section 1 - Existing Roads

Will existing roads be used? YES

Existing Road Map:

Sumideros12W1PAFedCom2H_existingroadmap_20171019101411.pdf

Existing Road Purpose: ACCESS,FLUID TRANSPORT

Row(s) Exist? NO

ROW ID(s)

ID:

Do the existing roads need to be improved? NO

Existing Road Improvement Description:

Existing Road Improvement Attachment:

Section 2 - New or Reconstructed Access Roads

Will new roads be needed? YES

New Road Map:

Sumideros12W1PAFedCom2H_newroadmap_20171019101434.pdf

New road type: RESOURCE

Length: 3402.59 Feet

Width (ft.): 20

Max slope (%): 3

Max grade (%): 3

Army Corp of Engineers (ACOE) permit required? NO

ACOE Permit Number(s):

New road travel width: 14

New road access erosion control: None

New road access plan or profile prepared? NO

New road access plan attachment:

Access road engineering design? NO

Access road engineering design attachment:

Operator Name: MEWBOURNE OIL COMPANY

Well Name: SUMIDEROS 12 W1PA FED COM

Well Number: 2H

Access surfacing type: OTHER

Access topsoil source: OFFSITE

Access surfacing type description: Caliche

Access onsite topsoil source depth:

Offsite topsoil source description: Topsoil will be on edge of lease road.

Onsite topsoil removal process:

Access other construction information: None

Access miscellaneous information: None

Number of access turnouts: 3

Access turnout map:

Drainage Control

New road drainage crossing: OTHER

Drainage Control comments: None

Road Drainage Control Structures (DCS) description: None

Road Drainage Control Structures (DCS) attachment:

Access Additional Attachments

Additional Attachment(s):

Section 3 - Location of Existing Wells

Existing Wells Map? YES

Attach Well map:

Sumideros12W1PAFedCom2H_existingwellmap_20171019101508.pdf

Existing Wells description:

Section 4 - Location of Existing and/or Proposed Production Facilities

Submit or defer a Proposed Production Facilities plan? SUBMIT

Production Facilities description: a. All permanent, lasting more than 6 months, above ground structures including but not limited to pumpjacks, storage tanks, pipeline risers, meter housing, etc. that are not subject to safety requirements will be painted a non-reflective paint color that blends in with the surrounding landscape. The paint color will be one of the colors from the BLM Standard Environmental Colors chart selected by the BLM authorized officer. b. All proposed production facilities that are located on the well pad will be strategically placed to allow for maximum interim reclamation, recontouring, and revegetation of the well location. c. Production from the proposed well will be located on the east edge of location. d. A buried 4" steel gas line will be installed from the proposed well site to MOC's existing gas line. This will be a 200# buried steel pipeline. A 12" buried poly SWD line will be installed in the same ditch from the proposed well site to an existing MOC SWD PL. Plats are attached for both lines, which follow the new lease road. e. If any plans change regarding the production facility or other infrastructure (pipeline, electric line, etc.), we will submit a sundry notice or right of way (if applicable) prior to installation of construction.

Operator Name: MEWBOURNE OIL COMPANY

Well Name: SUMIDEROS 12 W1PA FED COM

Well Number: 2H

Production Facilities map:

Sumideros12W1PAFedCom2H_productionfacilitymap_20171019101758.pdf

Sumideros12W1PAFedCom2H_GASANDSWDPLROUTE_20171019104058.pdf

Section 5 - Location and Types of Water Supply

Water Source Table

Water source use type: DUST CONTROL,
INTERMEDIATE/PRODUCTION CASING, STIMULATION, SURFACE
CASING

Describe type:

Source latitude: 32.066223

Source datum: NAD83

Water source permit type: WATER WELL

Source land ownership: FEDERAL

Water source transport method: TRUCKING

Source transportation land ownership: COMMERCIAL

Water source volume (barrels): 2014

Source volume (gal): 84588

Water source type: IRRIGATION

Source longitude: -103.75335

Water source use type: DUST CONTROL,
INTERMEDIATE/PRODUCTION CASING, STIMULATION, SURFACE
CASING

Describe type:

Source latitude: 32.05537

Source datum: NAD83

Water source permit type: WATER WELL

Source land ownership: PRIVATE

Water source transport method: TRUCKING

Source transportation land ownership: COMMERCIAL

Water source volume (barrels): 2014

Source volume (gal): 84588

Water source type: IRRIGATION

Source longitude: -103.8013

Source volume (acre-feet): 0.2595907

Water source and transportation map:

Sumideros12W1PAFedCom2H_watersourceandtransportationmap_20171019101819.pdf

Water source comments: Both sources shown on one map

New water well? NO

New Water Well Info

Operator Name: MEWBOURNE OIL COMPANY

Well Name: SUMIDEROS 12 W1PA FED COM

Well Number: 2H

Well latitude:

Well Longitude:

Well datum:

Well target aquifer:

Est. depth to top of aquifer(ft):

Est thickness of aquifer:

Aquifer comments:

Aquifer documentation:

Well depth (ft):

Well casing type:

Well casing outside diameter (in.):

Well casing inside diameter (in.):

New water well casing?

Used casing source:

Drilling method:

Drill material:

Grout material:

Grout depth:

Casing length (ft.):

Casing top depth (ft.):

Well Production type:

Completion Method:

Water well additional information:

State appropriation permit:

Additional information attachment:

Section 6 - Construction Materials

Construction Materials description: Caliche - both sources shown on one map.

Construction Materials source location attachment:

Sumideros12W1PAFedCom2H_calichesourceandtransportationmap_20171019101831.pdf

Section 7 - Methods for Handling Waste

Waste type: SEWAGE

Waste content description: Human waste & grey water

Amount of waste: 1500 gallons

Waste disposal frequency : Weekly

Safe containment description: 2,000 gallon plastic container

Safe containmant attachment:

Waste disposal type: HAUL TO COMMERCIAL FACILITY

Disposal location ownership: PRIVATE

Disposal type description:

Disposal location description: City of Carlsbad Water Treatment facility

Operator Name: MEWBOURNE OIL COMPANY

Well Name: SUMIDEROS 12 W1PA FED COM

Well Number: 2H

Waste type: GARBAGE

Waste content description: Garbage & trash

Amount of waste: 1500 pounds

Waste disposal frequency : One Time Only

Safe containment description: Enclosed trash trailer

Safe containmant attachment:

Waste disposal type: HAUL TO COMMERCIAL FACILITY **Disposal location ownership:** PRIVATE

Disposal type description:

Disposal location description: Waste Management facility in Carlsbad.

Waste type: DRILLING

Waste content description: Drill cuttings

Amount of waste: 940 barrels

Waste disposal frequency : One Time Only

Safe containment description: Drill cuttings will be properly contained in steel tanks (20 yard roll off bins.)

Safe containmant attachment:

Waste disposal type: HAUL TO COMMERCIAL FACILITY **Disposal location ownership:** PRIVATE

Disposal type description:

Disposal location description: NMOCD approved waste disposal locations are CRI or Lea Land, both facilities are located on HWY 62/180, Sec. 27 T20S R32E.

Reserve Pit

Reserve Pit being used? NO

Temporary disposal of produced water into reserve pit?

Reserve pit length (ft.) **Reserve pit width (ft.)**

Reserve pit depth (ft.) **Reserve pit volume (cu. yd.)**

Is at least 50% of the reserve pit in cut?

Reserve pit liner

Reserve pit liner specifications and installation description

Cuttings Area

Cuttings Area being used? NO

Are you storing cuttings on location? NO

Operator Name: MEWBOURNE OIL COMPANY

Well Name: SUMIDEROS 12 W1PA FED COM

Well Number: 2H

Description of cuttings location

Cuttings area length (ft.)

Cuttings area width (ft.)

Cuttings area depth (ft.)

Cuttings area volume (cu. yd.)

Is at least 50% of the cuttings area in cut?

WCuttings area liner

Cuttings area liner specifications and installation description

Section 8 - Ancillary Facilities

Are you requesting any Ancillary Facilities?: NO

Ancillary Facilities attachment:

Comments:

Section 9 - Well Site Layout

Well Site Layout Diagram:

Sumideros12W1PAFedCom2H_wellsitelayout_20171019101902.pdf

Comments:

Section 10 - Plans for Surface Reclamation

Type of disturbance: New Surface Disturbance

Multiple Well Pad Name: SUMIDEROS 12 PA PAD

Multiple Well Pad Number: 2

Recontouring attachment:

Drainage/Erosion control construction: None

Drainage/Erosion control reclamation: None

Well pad proposed disturbance (acres):	Well pad interim reclamation (acres): 3.567	Well pad long term disturbance (acres): 2.859
Road proposed disturbance (acres):	Road interim reclamation (acres): 1.561	Road long term disturbance (acres): 1.561
Powerline proposed disturbance (acres):	Powerline interim reclamation (acres):	Powerline long term disturbance (acres):
Pipeline proposed disturbance (acres):	Pipeline interim reclamation (acres): 1.8641323	Pipeline long term disturbance (acres): 1.8641323
Other proposed disturbance (acres):	Other interim reclamation (acres): 0	Other long term disturbance (acres): 0
Total proposed disturbance:	Total interim reclamation: 6.992132	Total long term disturbance: 6.284132

Disturbance Comments: In areas to be heavily disturbed, the top 6 inches of soil material, will be stripped and stockpiled on the perimeter of the well location to keep topsoil viable, and to make redistribution of topsoil more efficient during interim

Operator Name: MEWBOURNE OIL COMPANY

Well Name: SUMIDEROS 12 W1PA FED COM

Well Number: 2H

reclamation. Stockpiled topsoil should include vegetative material. Topsoil will be clearly segregated and stored separately from subsoils. Contaminated soil will not be stockpiled, but properly treated and handled prior to topsoil salvaging.

Reconstruction method: The areas planned for interim reclamation will then be recontoured to the original contour if feasible, or if not feasible, to an interim contour that blends with the surrounding topography as much as possible. Where applicable, the fill material of the well pad will be backfilled into the cut to bring the area back to the original contour. The interim cut and fill slopes prior to re-seeding will not be steeper than a 3:1 ratio, unless the adjacent native topography is steeper. Note: Constructed slopes may be much steeper during drilling, but will be recontoured to the above ratios during interim reclamation.

Topsoil redistribution: Topsoil will be evenly respread and aggressively revegetated over the entire disturbed area not needed for all-weather operations including cuts & fills. To seed the area, the proper BLM seed mixture, free of noxious weeds, will be used.

Soil treatment: NA

Existing Vegetation at the well pad: Various brush & grasses

Existing Vegetation at the well pad attachment:

Existing Vegetation Community at the road: Various brush & grasses

Existing Vegetation Community at the road attachment:

Existing Vegetation Community at the pipeline: NA

Existing Vegetation Community at the pipeline attachment:

Existing Vegetation Community at other disturbances: NA

Existing Vegetation Community at other disturbances attachment:

Non native seed used? NO

Non native seed description:

Seedling transplant description:

Will seedlings be transplanted for this project? NO

Seedling transplant description attachment:

Will seed be harvested for use in site reclamation? NO

Seed harvest description:

Seed harvest description attachment:

Seed Management

Seed Table

Operator Name: MEWBOURNE OIL COMPANY

Well Name: SUMIDEROS 12 W1PA FED COM

Well Number: 2H

Seed type:

Seed source:

Seed name:

Source name:

Source address:

Source phone:

Seed cultivar:

Seed use location:

PLS pounds per acre:

Proposed seeding season:

Seed Summary

Total pounds/Acre:

Seed Type	Pounds/Acre
------------------	--------------------

Seed reclamation attachment:

Operator Contact/Responsible Official Contact Info

First Name: Bradley

Last Name: Bishop

Phone: (575)393-5905

Email: bbishop@mewbourne.com

Seedbed prep: Final seedbed preparation will consist of contour cultivating to a depth of 4 to 6 inches within 24 hours prior to seeding, dozer tracking, or other imprinting in order to break the soil crust and create seed germination micro-sites.

Seed BMP: To seed the area, the proper BLM seed mixture, free of noxious weeds, will be used.

Seed method: drilling or broadcasting seed over entire reclaimed area.

Existing invasive species? NO

Existing invasive species treatment description:

Existing invasive species treatment attachment:

Weed treatment plan description: NA

Weed treatment plan attachment:

Monitoring plan description: vii. All reclaimed areas will be monitored periodically to ensure that revegetation occurs, that the area is not redisturbed, and that erosion and invasive/noxious weeds are controlled.

Monitoring plan attachment:

Success standards: regrowth within 1 full growing season of reclamation.

Pit closure description: NA

Pit closure attachment:

Section 11 - Surface Ownership

Operator Name: MEWBOURNE OIL COMPANY

Well Name: SUMIDEROS 12 W1PA FED COM

Well Number: 2H

Disturbance type: EXISTING ACCESS ROAD

Describe:

Surface Owner: BUREAU OF LAND MANAGEMENT

Other surface owner description:

BIA Local Office:

BOR Local Office:

COE Local Office:

DOD Local Office:

NPS Local Office:

State Local Office:

Military Local Office:

USFWS Local Office:

Other Local Office:

USFS Region:

USFS Forest/Grassland:

USFS Ranger District:

Fee Owner: Pecos Valley Artesian Conservation District

Phone: (575)622-7000

Fee Owner Address: PO Box 1346 Roswell NM 88202

Email:

Surface use plan certification: NO

Surface use plan certification document:

Surface access agreement or bond: Agreement

Surface Access Agreement Need description: SUA in place

Surface Access Bond BLM or Forest Service:

BLM Surface Access Bond number:

USFS Surface access bond number:

Disturbance type: WELL PAD

Describe:

Surface Owner: BUREAU OF LAND MANAGEMENT

Other surface owner description:

BIA Local Office:

Operator Name: MEWBOURNE OIL COMPANY

Well Name: SUMIDEROS 12 W1PA FED COM

Well Number: 2H

BOR Local Office:

COE Local Office:

DOD Local Office:

NPS Local Office:

State Local Office:

Military Local Office:

USFWS Local Office:

Other Local Office:

USFS Region:

USFS Forest/Grassland:

USFS Ranger District:

Fee Owner: Pecos Valley Artesian Conservation
District
Phone: (575)622-7000

Fee Owner Address: PO Box 1346 Roswell NM 88202

Email:

Surface use plan certification: NO

Surface use plan certification document:

Surface access agreement or bond: Agreement

Surface Access Agreement Need description: SUA in place

Surface Access Bond BLM or Forest Service:

BLM Surface Access Bond number:

USFS Surface access bond number:

Disturbance type: PIPELINE

Describe:

Surface Owner: BUREAU OF LAND MANAGEMENT

Other surface owner description:

BIA Local Office:

BOR Local Office:

COE Local Office:

DOD Local Office:

NPS Local Office:

State Local Office:

Operator Name: MEWBOURNE OIL COMPANY

Well Name: SUMIDEROS 12 W1PA FED COM

Well Number: 2H

Military Local Office:

USFWS Local Office:

Other Local Office:

USFS Region:

USFS Forest/Grassland:

USFS Ranger District:

Section 12 - Other Information

Right of Way needed? NO

Use APD as ROW?

ROW Type(s):

ROW Applications

SUPO Additional Information: NONE

Use a previously conducted onsite? YES

Previous Onsite information: AUG 11 2017 Met with Jeffery Robertson (BLM) & RRC Surveying & staked location @ 185' FSL & 380' FEL, Sec 12, T26S, R31E, Eddy Co., NM. (Elevation @ 3209'). This appears to be a drillable location with pit area to the S. Topsoil W. Reclaim 65' off W side. Will require 3100' of new road off NE corner of pad then N to the Paduca 7/6 A2ED Fed Com #1H. Pad size is 370' x 370'. Electric line to E. Shares pad with Sumideros 12 W1PA Fed Com #1H 50' to the E.

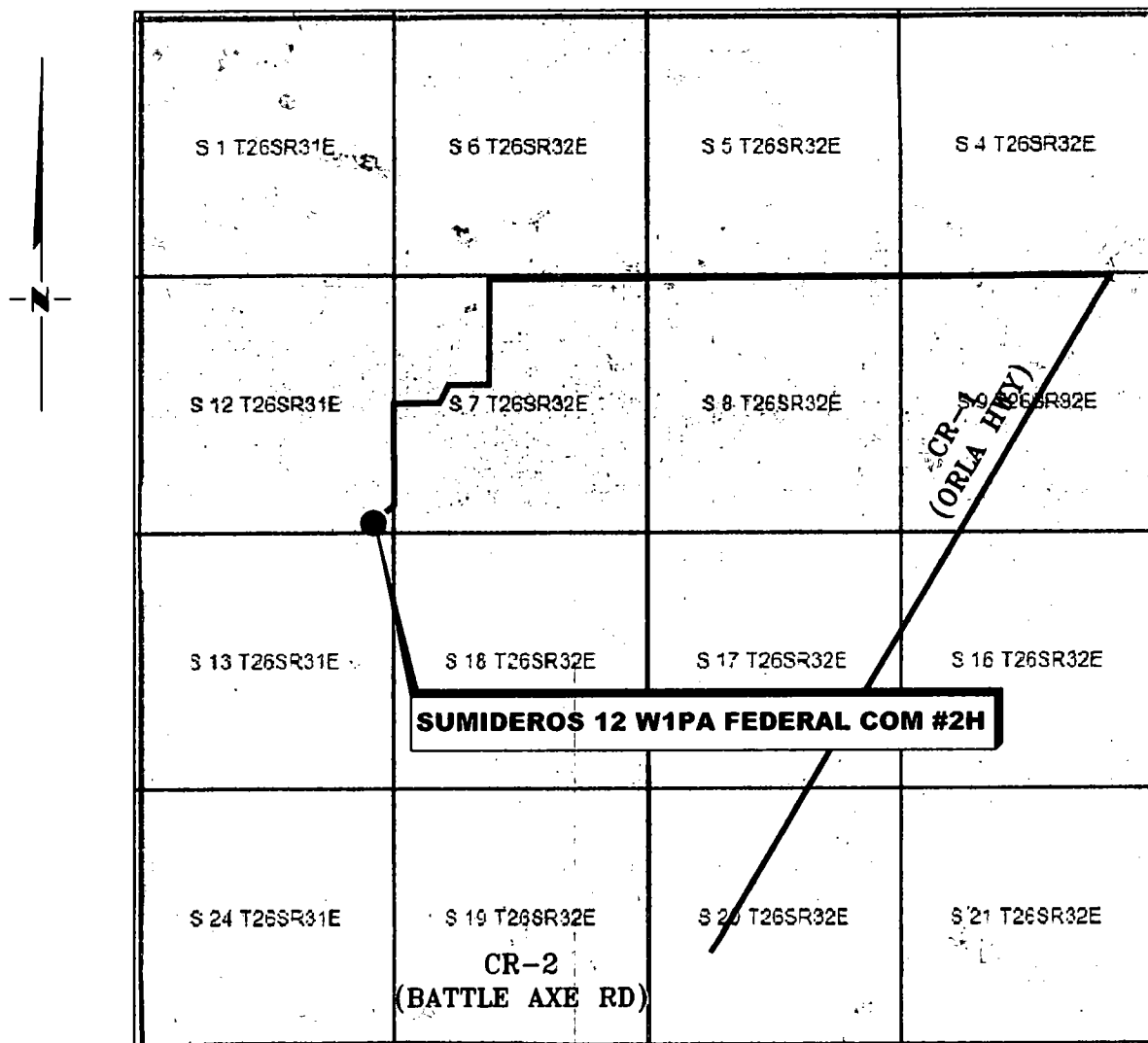
Other SUPO Attachment

Sumideros12W1PAFedCom2H_interimreclamation_20171019104234.pdf

Sumideros12W1PAFedCom2H_GASCAPTUREPLAN_20171019104721.pdf

VICINITY MAP

NOT TO SCALE



*SECTION 12, TWP. 26 SOUTH, RGE. 31 EAST,
N. M. P. M., EDDY COUNTY, NEW MEXICO*

OPERATOR: Mewbourne Oil Company
LEASE: Sumideros 12 W1PA Federal Com
WELL NO.: 2H

LOCATION: 185' FSL & 380' FEL
ELEVATION: 3209'

Copyright 2016 - All Rights Reserved

NO.	REVISION	DATE
JOB NO.: LS1707432		
DWG. NO.: 1707432VM		

RRC

308 W. BROADWAY ST., HOBBS, NM 88240 (575) 964-8200

SCALE: N. T. S.
DATE: 8-15-2017
SURVEYED BY: ML/TF
DRAWN BY: CMJ
APPROVED BY: RMH
SHEET: 1 OF 1

[illegible]

LINE TABLE		
LINE	BEARING	LENGTH
L1	N 89°59'33" W	351.72'
L2	S 00°19'56" E	2,129.98'
L3	S 50°45'37" W	225.02'

LEGEND

() RECORD DATA - GLO

◆ FOUND MONUMENT
AS NOTED

■ PROPOSED ROAD

Copyright 2016 - All Rights Reserved

SCALE: 1" = 2000'

DATE: 8-15-2017

SURVEYED BY: ML/TI

DRAWN BY: CMJ

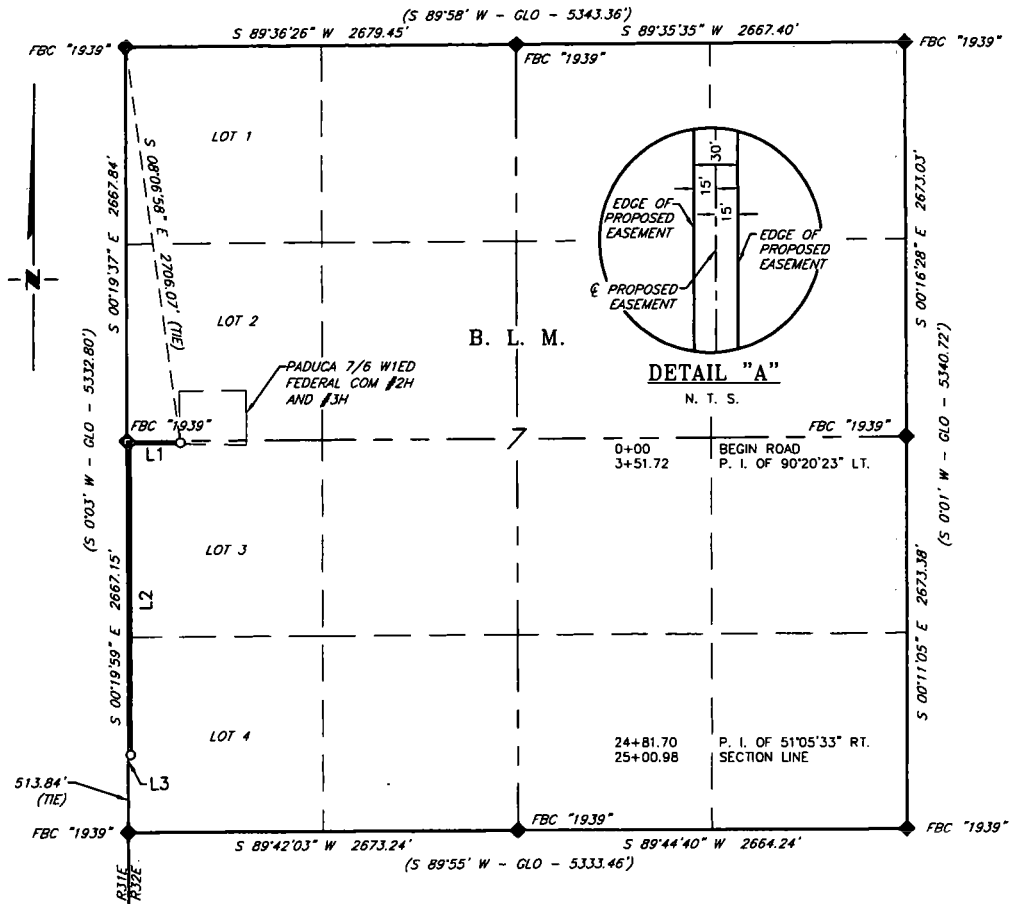
APPROVED BY: RMH

RRC

308 W. BROADWAY ST., HOBBS, NM 88240 (575) 964-8200

[illegible]

**MEWBOURNE OIL COMPANY
PROPOSED ACCESS ROAD
FOR THE SUMIDEROS 12 W1PA FEDERAL COM #2H
SECTION 7, T26S, R32E,
N. M. P. M., LEA CO., NEW MEXICO**



LINE TABLE		
LINE	BEARING	LENGTH
L1	N 89°59'33" W	351.72'
L2	S 00°19'56" E	2,129.98'
L3	S 50°45'37" W	19.28'

SCALE: 1" = 1000'
0 500' 1000'

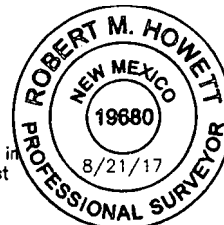
BEARINGS ARE GRID NAD 83
N.M. EAST
DISTANCES ARE HORIZ. GROUND.

LEGEND

- () RECORD DATA - GLO
- ◆ FOUND MONUMENT AS NOTED
- PROPOSED ROAD

I, R. M. Howett, a N. M. Professional Surveyor, hereby certify that I prepared this plat from an actual survey made on the ground under my direct supervision, said survey and plat meet the Min. Stds. for Land Surveying in the State of N. M. and are true and correct to the best of my knowledge and belief.

Robert M. Howett
Robert M. Howett NM PS 19680



Copyright 2016 - All Rights Reserved

NO.	REVISION	DATE
JOB NO.:	LS1707432	
DWG. NO.:	1707432RD2	

RRC

308 W. BROADWAY ST., HOBBS, NM 88240 (575) 964-8200

SCALE: 1" = 1000'
DATE: 8-15-2017
SURVEYED BY: ML/TF
DRAWN BY: CMJ
APPROVED BY: RMH
SHEET: 2 OF 4

**MEWBOURNE OIL COMPANY
PROPOSED ACCESS ROAD
FOR THE SUMIDEROS 12 W1PA FEDERAL COM #2H
SECTION 7, T26S, R32E,
N. M. P. M., LEA CO., NEW MEXICO**

DESCRIPTION

A strip of land 30 feet wide, being 2,500.98 feet or 151.574 rods in length, lying in Section 7, Township 26 South, Range 32 East, N. M. P. M., Lea County, New Mexico, being 15 feet left and 15 feet right of the following described survey of a centerline across B. L. M. land:

BEGINNING at Engr. Sta. 0+00, a point in Lot 3, of Section 7, which bears, S 08°06'58" E, 2,706.07 feet from a brass cap, stamped "1939", found for the Northwest corner of Section 7;

Thence N 89°59'33" W, 351.72 feet, to Engr. Sta. 3+51.72, a P. I. of 90°20'23" left;

Thence S 00°19'56" E, 2,129.98 feet, to Engr. Sta. 24+81.70, a P. I. of 51°05'33" right;

Thence S 50°45'37" W, 19.28 feet, to Engr. Sta. 25+00.98, a point on the West line of Section 7, which bears, N 00°19'59" W, 513.84 feet from a brass cap, stamped "1939", found for the Southwest corner of Section 7.

Said strip of land contains 1.722 acres, more or less, and is allocated by forties as follows:

LOT 3	101.459 Rods	1.153 Acres
LOT 4	50.115 Rods	0.569 Acres

Copyright 2016 - All Rights Reserved

<div style="text-align: center;">  <p>RRC</p> </div>			SCALE: 1" = 1000'
			DATE: 8-15-2017
			SURVEYED BY: ML/TF
			DRAWN BY: CMJ
NO.	REVISION	DATE	APPROVED BY: RMH
JOB NO.: LS1707432			SHEET: 3 OF 4
DWG. NO.: 1707432RD3			

308 W. BROADWAY ST., HOBBS, NM 88240 (575) 964-8200

(S 89°54' W - GLO - 5330.16')
S 89°45'07" W 5333.61'

FND IRON ROD

SEC. 12
T26S R31E

B. L. M.

DETAIL "A"

N. T. S.

12

S 00°16'10" E 2663.02'

S 00°19'37" E 2667.84'
(S 00°19'37" E - 5332.80')

FBC "1939"

FBC "1940"

S 00°19'01" E 2666.80'

S 00°19'59" E 2667.15'

S 00°19'59" E 2667.15'

S 50°45'37" W 205.74'

S 89°35'34" W 5337.84'
(S 89°57' W - GLO - 5336.76')

R31E
RANGE

25+00.98
27+06.72

SECTION LINE
END ROAD

SUMIDEROS 12 WIPA
FEDERAL COM #2H
SUMIDEROS 12 WIPA
FEDERAL COM #1H

EDGE OF PROPOSED EASEMENT

EDGE OF PROPOSED EASEMENT

EDGE OF PROPOSED EASEMENT

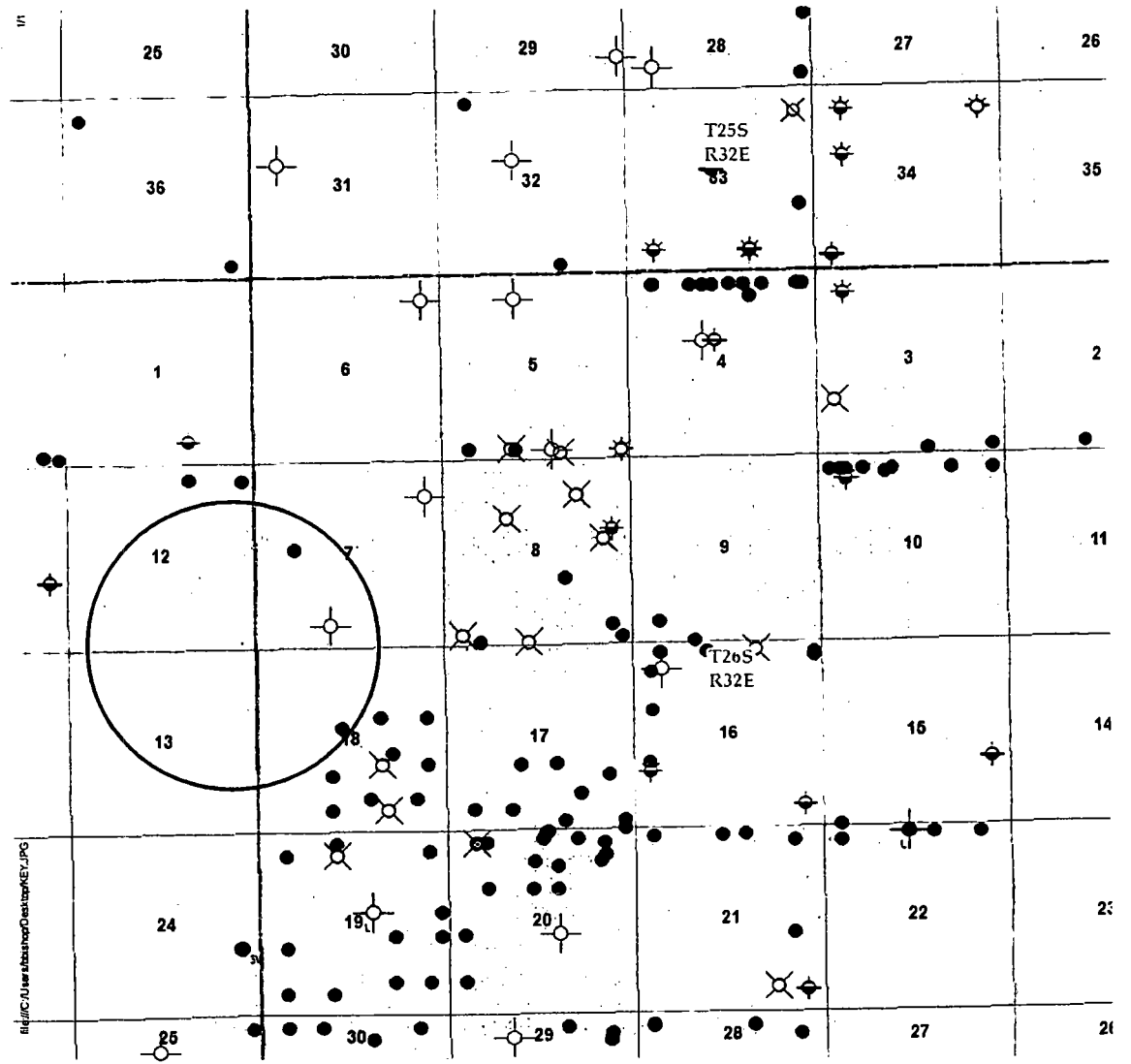
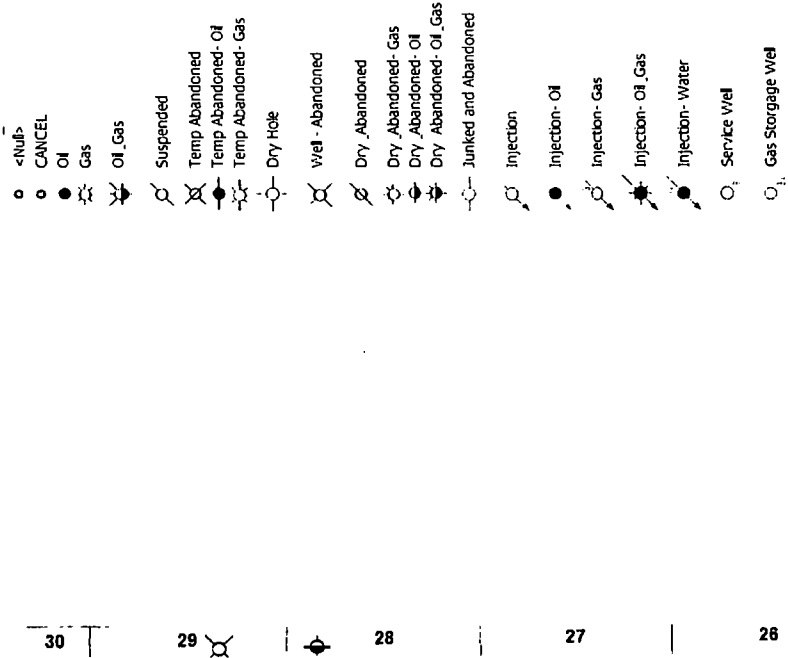
513.84'
(N.E.)

FBC "1939"

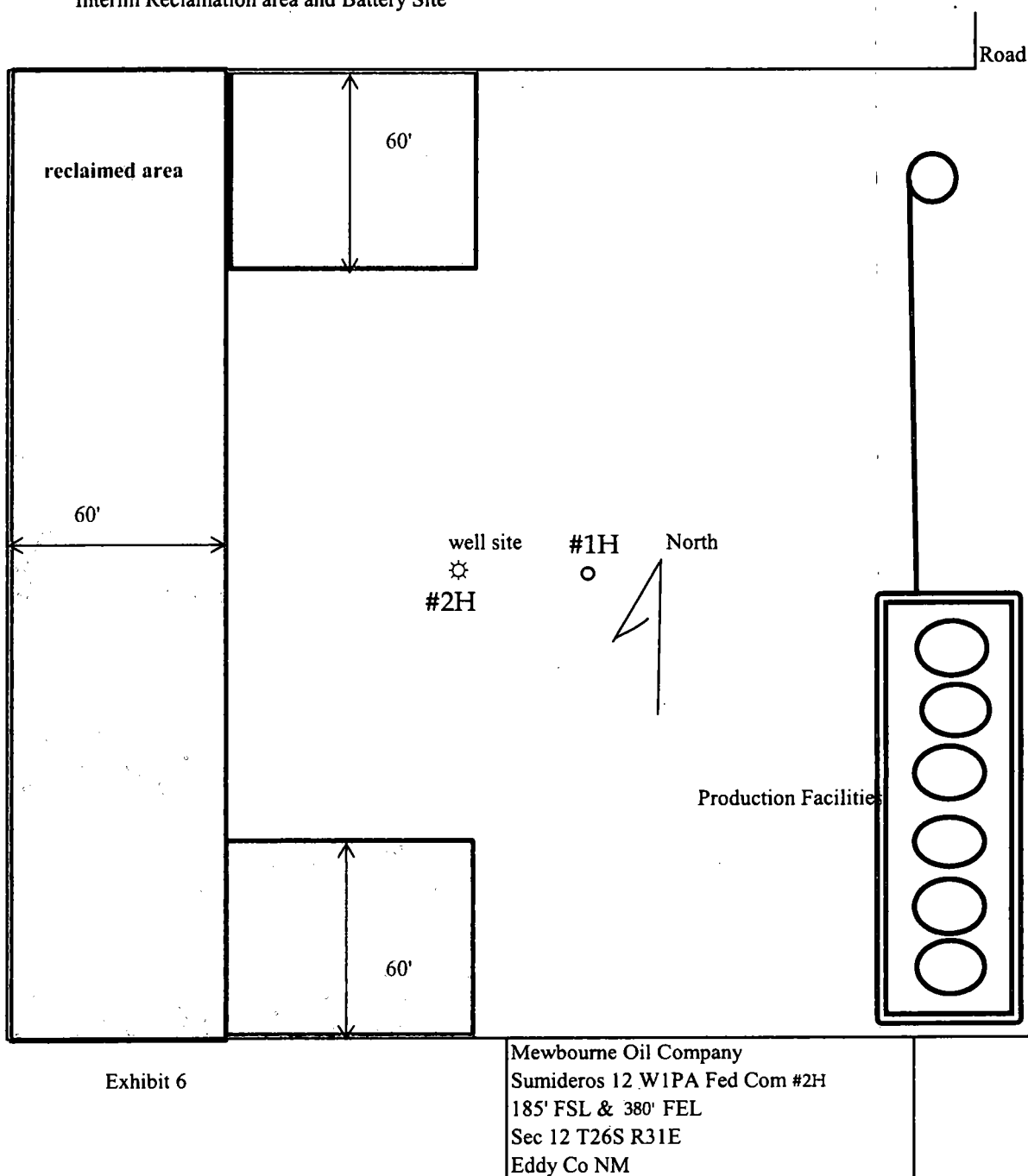
SCALE: 1" = 1000'
DATE: 8-15-2017
SURVEYED BY: ML/TF
DRAWN BY: CMJ
APPROVED BY: RMH
SHEET: 4 OF 4

KEY.JPG (211x721)

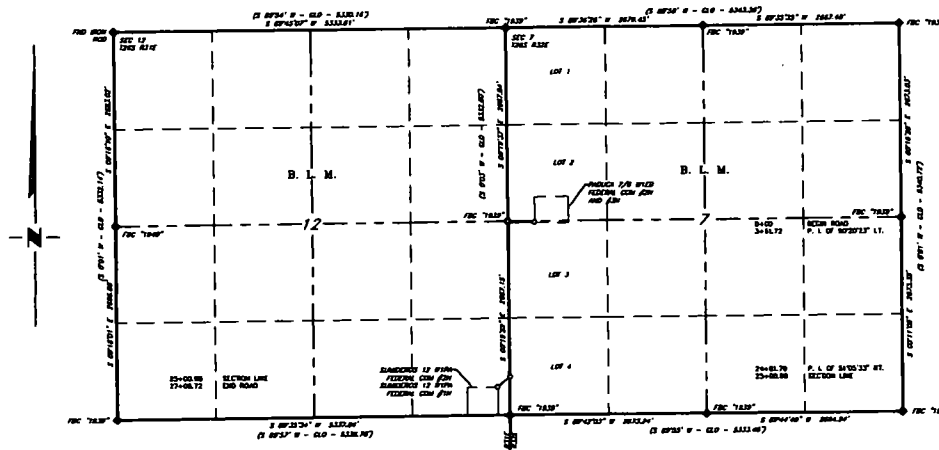
5/9/2017



Interim Reclamation area and Battery Site



MEWBOURNE OIL COMPANY
OVERALL OF PROPOSED BURIED 4" GAS & 12" SWD PL
FOR THE SUMIDEROS 12 W1PA FEDERAL COM #2H
SECTION 7, T26S, R32E, N. M. P. M., LEA CO., NEW MEXICO
& SECTION 12, T26S, R31E, N. M. P. M., EDDY CO., NEW MEXICO



LINE TABLE		
LINE	BEARING	LENGTH
L1	N 89°59'33" W	351.72'
L2	S 00°19'56" E	2,129.98'
L3	S 50°45'37" W	225.02'

SCALE: 1" = 2000'
0 1000' 2000'

BEARINGS ARE GRID NAD 83
NM EAST
DISTANCES ARE HORIZ. GROUND.

LEGEND
() RECORD DATA - GLO
◆ FOUND MONUMENT
AS NOTED
— PROPOSED ROAD

Copyright 2016 - All Rights Reserved

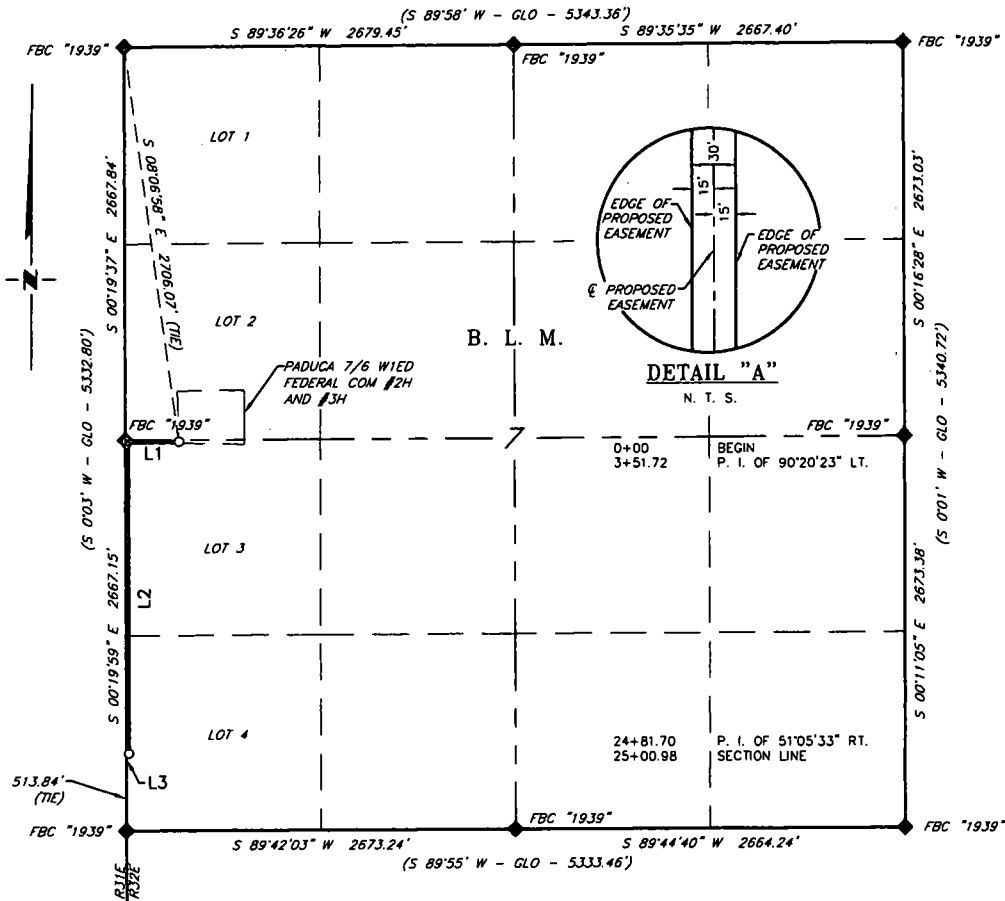
SCALE: 1" = 2000'
DATE: 8-15-2017
SURVEYED BY: ML/TF
DRAWN BY: CMJ
APPROVED BY: RMH
SHEET: 1 OF 4

RRC

308 W. BROADWAY ST., HOBBS, NM 88240 (505) 964-8200

NO.	REVISION	DATE
JOB NO.: LS1707432		
DWG. NO.: 1707432RD1		

**MEWBOURNE OIL COMPANY
PROPOSED GAS & SWD PL
FOR THE SUMIDEROS 12 W1PA FEDERAL COM #2H
SECTION 7, T26S, R32E,
N. M. P. M., LEA CO., NEW MEXICO**



LINE TABLE		
LINE	BEARING	LENGTH
L1	N 89°59'33" W	351.72'
L2	S 00°19'56" E	2,129.98'
L3	S 50°45'37" W	19.28'

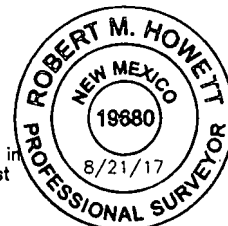
SCALE: 1" = 1000'
0 500' 1000'

BEARINGS ARE GRID NAD 83
NM EAST
DISTANCES ARE HORIZ. GROUND.

LEGEND
() RECORD DATA - GLO
◆ FOUND MONUMENT
AS NOTED
— PROPOSED ROAD

I, R. M. Howett, a N. M. Professional Surveyor, hereby certify that I prepared this plat from an actual survey made on the ground under my direct supervision, said survey and plat meet the Min. Stds. for Land Surveying in the State of N. M. and are true and correct to the best of my knowledge and belief.

Robert M. Howett
Robert M. Howett NM PS 19680



Copyright 2016 - All Rights Reserved

NO.	REVISION	DATE
JOB NO.:	LS1707432	
DWG. NO.:	1707432RD2	

RRC

308 W. BROADWAY ST., HOBBS, NM 88240 (575) 964-8200

SCALE: 1" = 1000'
DATE: 8-15-2017
SURVEYED BY: ML/TF
DRAWN BY: CMJ
APPROVED BY: RMH
SHEET: 2 OF 4

MEWBOURNE OIL COMPANY
PROPOSED GAS & SWD PL
FOR THE SUMIDEROS 12 W1PA FEDERAL COM #2H
SECTION 7, T26S, R32E,
N. M. P. M., LEA CO., NEW MEXICO

DESCRIPTION

A strip of land 30 feet wide, being 2,500.98 feet or 151.574 rods in length, lying in Section 7, Township 26 South, Range 32 East, N. M. P. M., Lea County, New Mexico, being 15 feet left and 15 feet right of the following described survey of a centerline across B. L. M. land:

BEGINNING at Engr. Sta. 0+00, a point in Lot 3, of Section 7, which bears, S 08°06'58" E, 2,706.07 feet from a brass cap, stamped "1939", found for the Northwest corner of Section 7;

Thence N 89°59'33" W, 351.72 feet, to Engr. Sta. 3+51.72, a P. I. of 90°20'23" left;

Thence S 00°19'56" E, 2,129.98 feet, to Engr. Sta. 24+81.70, a P. I. of 51°05'33" right;

Thence S 50°45'37" W, 19.28 feet, to Engr. Sta. 25+00.98, a point on the West line of Section 7, which bears, N 00°19'59" W, 513.84 feet from a brass cap, stamped "1939", found for the Southwest corner of Section 7.

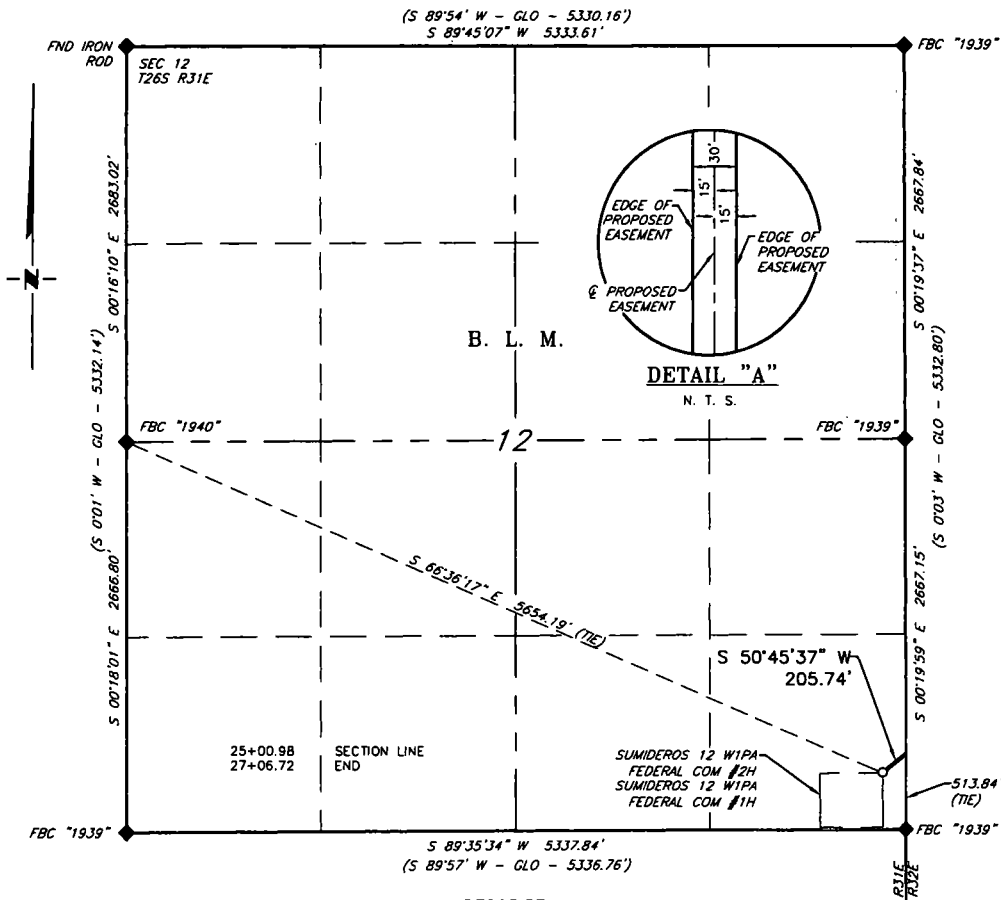
Said strip of land contains 1.722 acres, more or less, and is allocated by forties as follows:

LOT 3	101.459 Rods	1.153 Acres
LOT 4	50.115 Rods	0.569 Acres

Copyright 2016 - All Rights Reserved

				SCALE: 1" = 1000'
				DATE: 8-15-2017
				SURVEYED BY: ML/TF
				DRAWN BY: CMJ
				APPROVED BY: RMH
NO.	REVISION	DATE		SHEET: 3 OF 4
JOB NO.: LS1707432				
DWG. NO.: 1707432RD3			308 W. BROADWAY ST., HOBBS, NM 88240 (575) 964-8200	

MEWBOURNE OIL COMPANY
PROPOSED GAS & SWD PL
FOR THE SUMIDEROS 12 W1PA FEDERAL COM #2H
SECTION 12, T26S, R31E,
N. M. P. M., EDDY CO., NEW MEXICO



SCALE: 1" = 1000'
0 500' 1000'

BEARINGS ARE GRID NAD 83
NM EAST
DISTANCES ARE HORIZ. GROUND.

LEGEND

() RECORD DATA - GLO
◆ FOUND MONUMENT AS NOTED
— PROPOSED ROAD

I, R. M. Howett, a N. M. Professional Surveyor, hereby certify that I prepared this plat from an actual survey made on the ground under my direct supervision, said survey and plat meet the Min. Stds. for Land Surveying in the State of N. M. and are true and correct to the best of my knowledge and belief.

Robert M. Howett
Robert M. Howett NM PS 19680



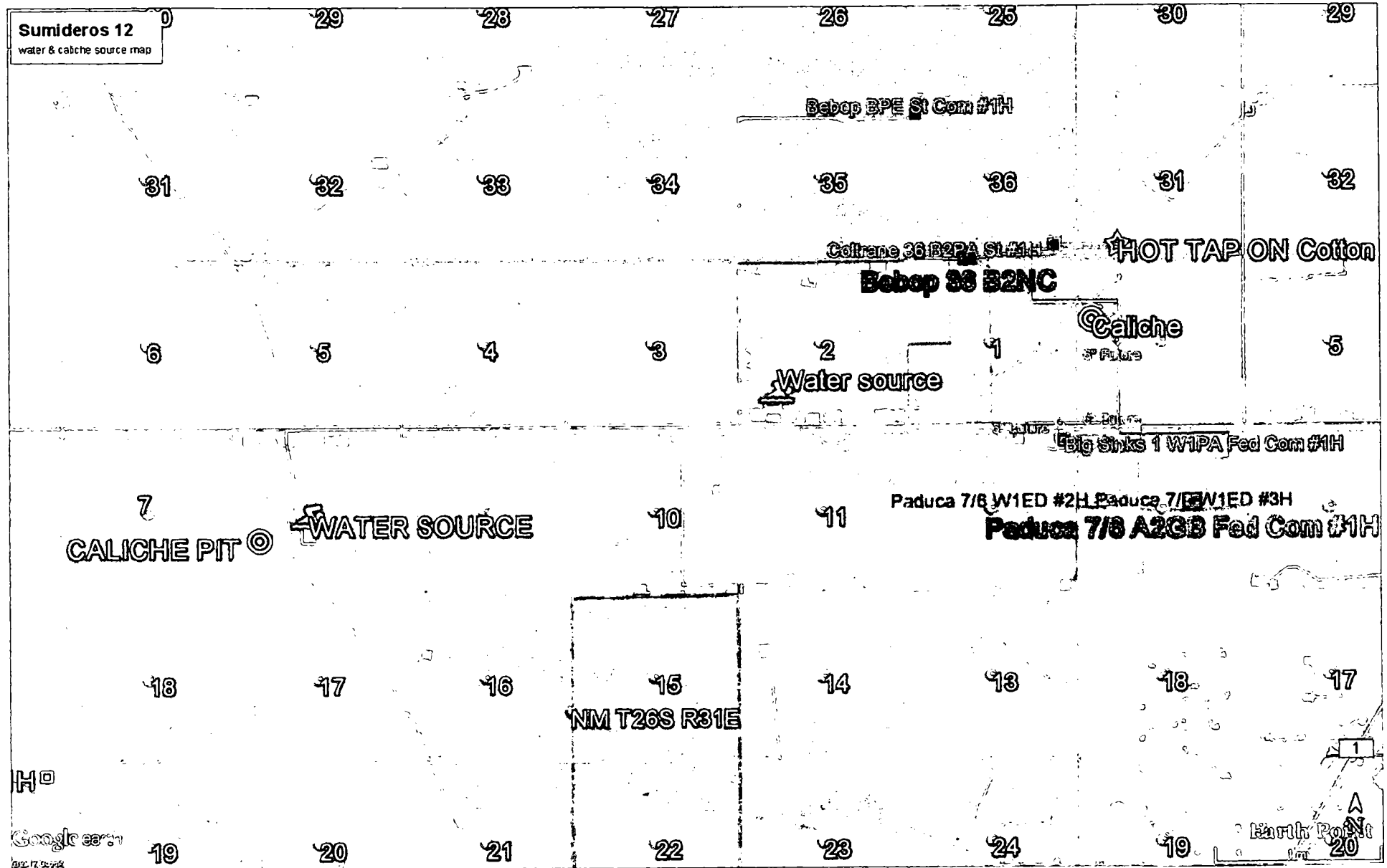
Copyright 2016 - All Rights Reserved

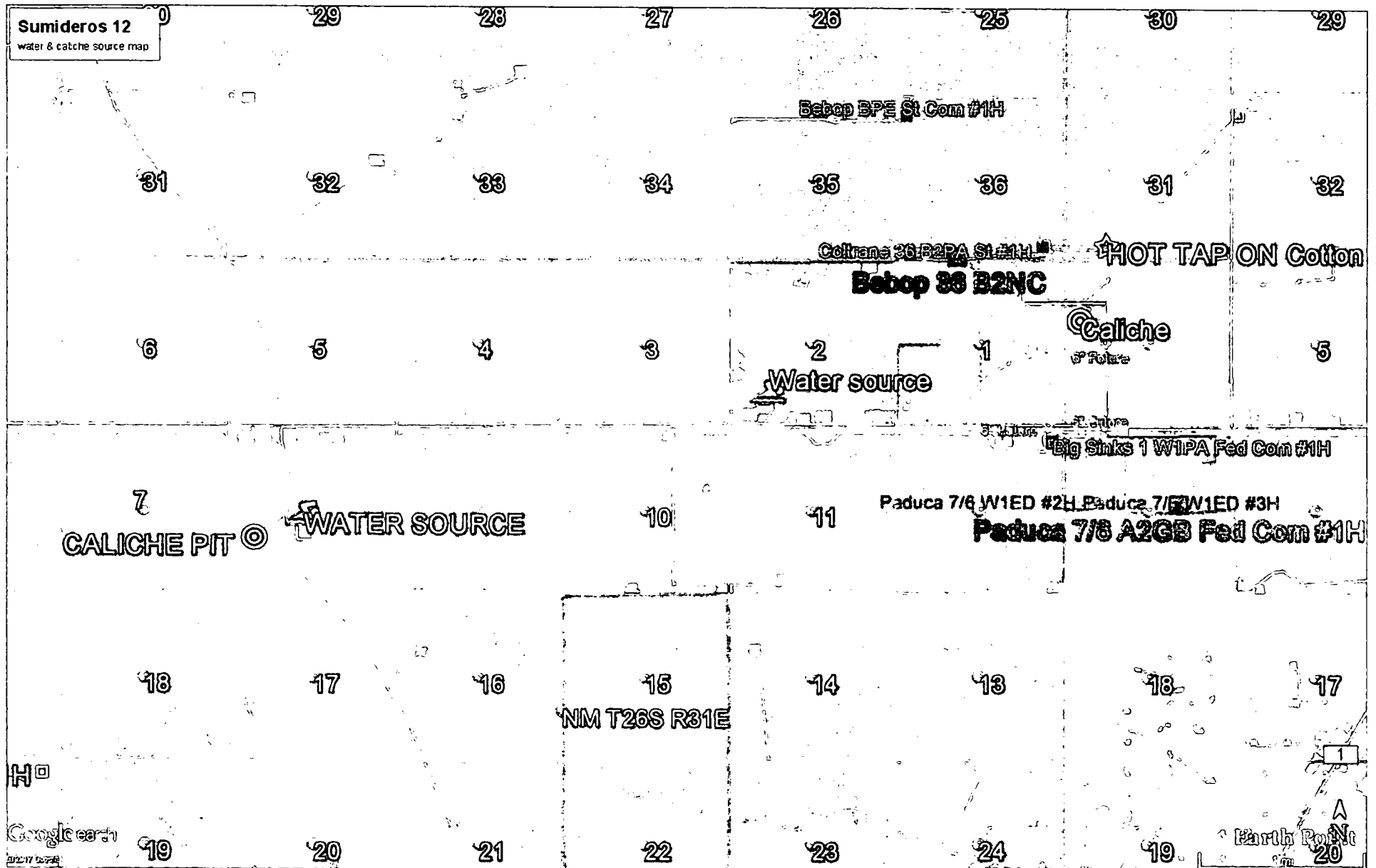
NO.	REVISION	DATE
JOB NO.:	LS1707432	
DWG. NO.:	1707432RD4	

RRC

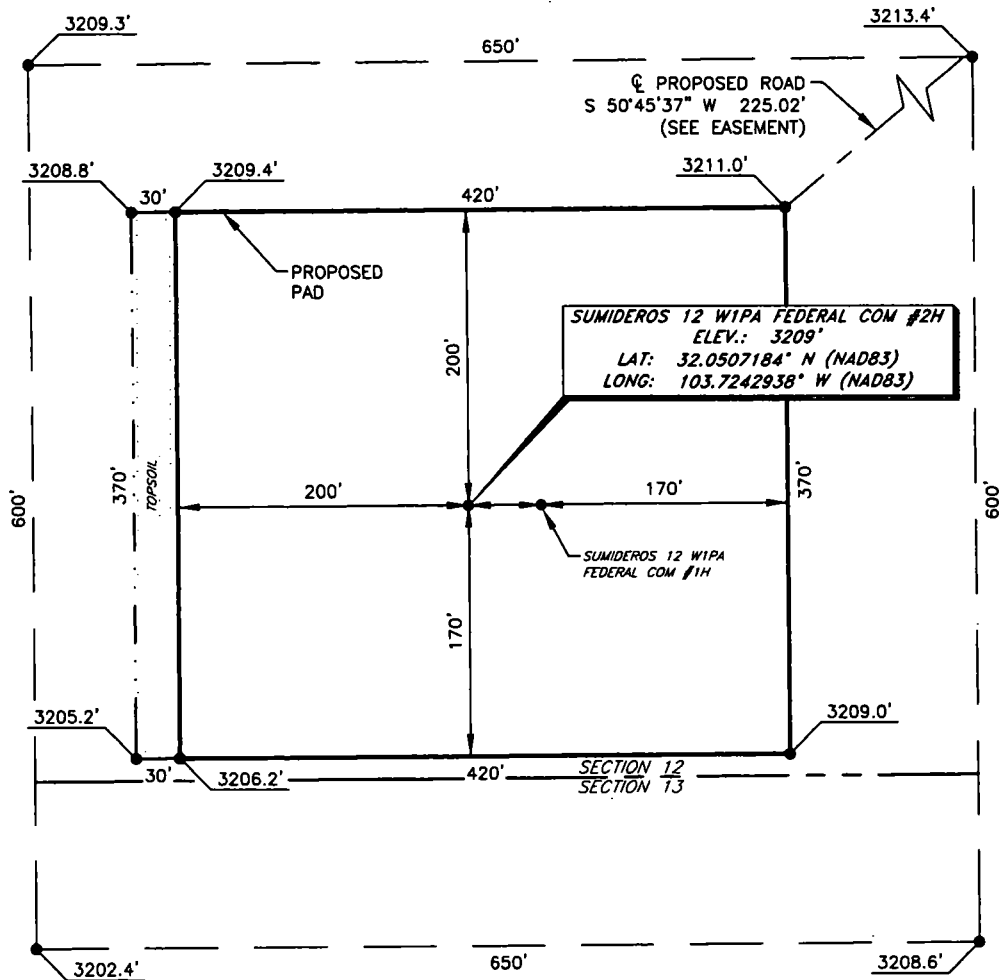
308 W. BROADWAY ST., HOBBS, NM 88240 (575) 964-8200

SCALE: 1" = 1000'
DATE: 8-15-2017
SURVEYED BY: ML/TF
DRAWN BY: CMJ
APPROVED BY: RMH
SHEET: 4 OF 4





MEWBOURNE OIL COMPANY
SUMIDEROS 12 WIPA FEDERAL COM #2H
 (185' FSL & 380' FEL)
 SECTION 12, T26S, R31E
 N. M. P. M., EDDY CO., NEW MEXICO



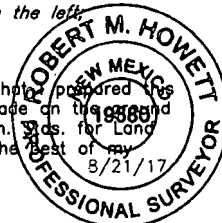
DIRECTIONS TO LOCATION

From the intersection of CR-2 (Battle Axe Rd.) and CR-1 (Orla Hwy.):
 Go Northeast CR-1 approx. 3.1 miles to Pipeline Rd. on the left;
 Turn left and go West on Pipeline Rd. approx. 2.5 miles to a lease road on the left;
 Turn left and go South approx. 0.4 miles to a lease road on the right;
 Turn left and go West approx. 0.1 miles to the Southeast corner of the Paduca 7/6 WIED Federal Com pad continue West across pad to a proposed road;
 Continue on proposed road approx. 352 feet to a proposed road on the left;
 Turn left and go South approx. 0.5 miles to location on the right.

SCALE: 1" = 100'
 0 50 100
 BEARINGS ARE
 NAD 83 GRID - NM EAST
 DISTANCES ARE
 GROUND.

I, R. M. Howett, a N. M. Professional Surveyor, hereby certify that the proposed well location is unclassified survey of a well location from an actual survey made on the ground under my direct supervision, said survey and plat meet the Min. Stats. for Land Surveying in the State of N. M. and are true and correct to the best of my knowledge and belief.

Robert M. Howett
 Robert M. Howett NM PS 19680



Copyright 2016 - All Rights Reserved

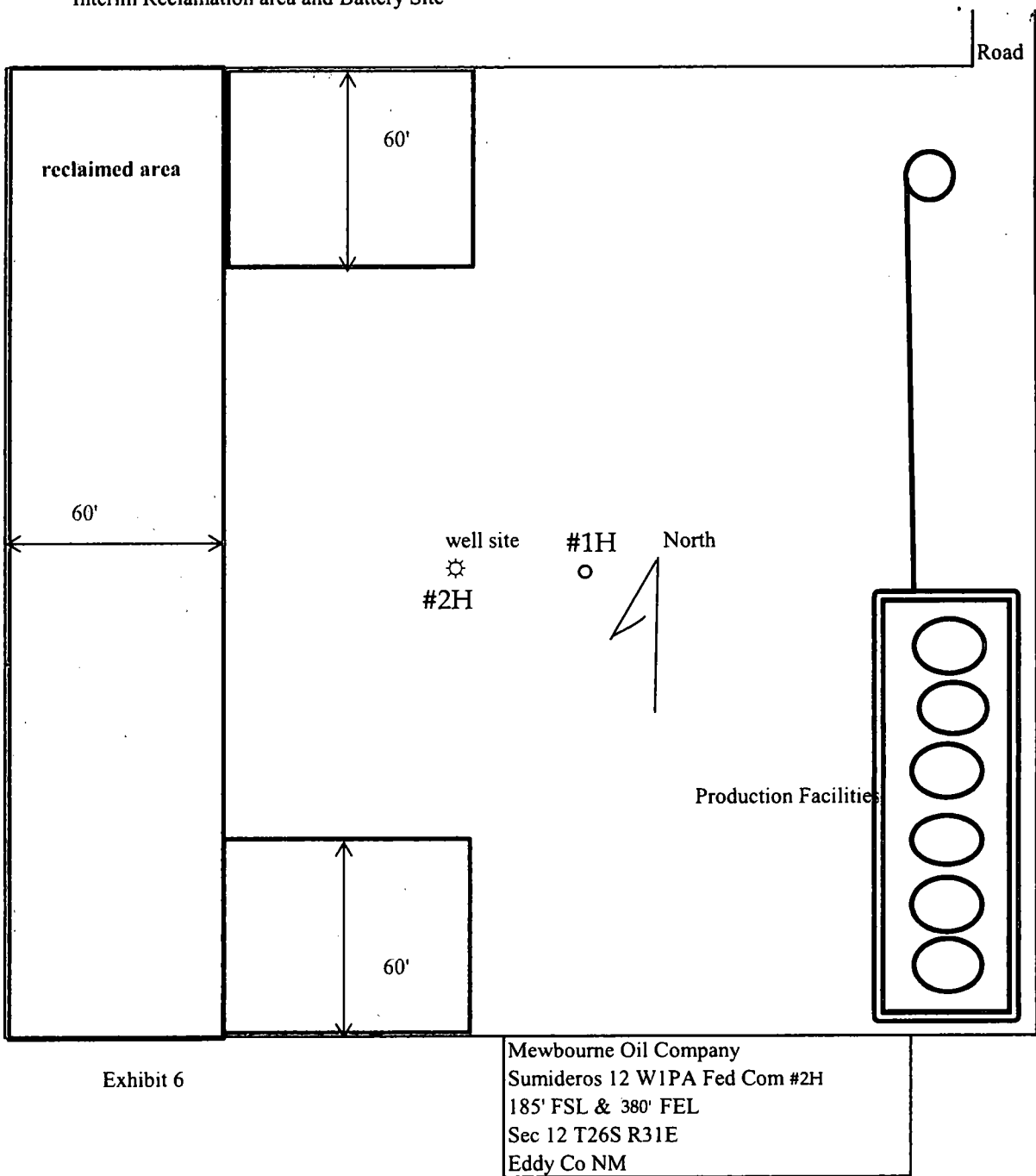
NO.	REVISION	DATE
JOB NO.:	LS1707432	
DWG. NO.:	1707432PAD	

RRC

308 W. BROADWAY ST., HOBBS, NM 88240 (575) 964-8200

SCALE: 1" = 100'
DATE: 8-15-2017
SURVEYED BY: ML/TF
DRAWN BY: CMJ
APPROVED BY: RMH
SHEET: 1 OF 1

Interim Reclamation area and Battery Site



Section 3 - Unlined Pits

Would you like to utilize Unlined Pit PWD options? NO

Produced Water Disposal (PWD) Location:

PWD surface owner:

PWD disturbance (acres):

Unlined pit PWD on or off channel:

Unlined pit PWD discharge volume (bbl/day):

Unlined pit specifications:

Precipitated solids disposal:

Describe precipitated solids disposal:

Precipitated solids disposal permit:

Unlined pit precipitated solids disposal schedule:

Unlined pit precipitated solids disposal schedule attachment:

Unlined pit reclamation description:

Unlined pit reclamation attachment:

Unlined pit Monitor description:

Unlined pit Monitor attachment:

Do you propose to put the produced water to beneficial use?

Beneficial use user confirmation:

Estimated depth of the shallowest aquifer (feet):

Does the produced water have an annual average Total Dissolved Solids (TDS) concentration equal to or less than that of the existing water to be protected?

TDS lab results:

Geologic and hydrologic evidence:

State authorization:

Unlined Produced Water Pit Estimated percolation:

Unlined pit: do you have a reclamation bond for the pit?

Is the reclamation bond a rider under the BLM bond?

Unlined pit bond number:

Unlined pit bond amount:

Additional bond information attachment:

Section 4 - Injection

Would you like to utilize Injection PWD options? NO

Produced Water Disposal (PWD) Location:

PWD surface owner:

PWD disturbance (acres):

Injection PWD discharge volume (bbl/day):

Injection well mineral owner:

Injection well type:

Injection well number:

Injection well name:

Assigned injection well API number?

Injection well API number:

Injection well new surface disturbance (acres):

Minerals protection information:

Mineral protection attachment:

Underground Injection Control (UIC) Permit?

UIC Permit attachment:

Section 5 - Surface Discharge

Would you like to utilize Surface Discharge PWD options? NO

Produced Water Disposal (PWD) Location:

PWD surface owner:

PWD disturbance (acres):

Surface discharge PWD discharge volume (bbl/day):

Surface Discharge NPDES Permit?

Surface Discharge NPDES Permit attachment:

Surface Discharge site facilities information:

Surface discharge site facilities map:

Section 6 - Other

Would you like to utilize Other PWD options? NO

Produced Water Disposal (PWD) Location:

PWD surface owner:

PWD disturbance (acres):

Other PWD discharge volume (bbl/day):

Other PWD type description:

Other PWD type attachment:

Have other regulatory requirements been met?

Other regulatory requirements attachment:



U.S. Department of the Interior
BUREAU OF LAND MANAGEMENT

Bond Info Data Report

06/25/2018

Bond Information

Federal/Indian APD: FED

BLM Bond number: NM1693

BIA Bond number:

Do you have a reclamation bond? NO

Is the reclamation bond a rider under the BLM bond?

Is the reclamation bond BLM or Forest Service?

BLM reclamation bond number:

Forest Service reclamation bond number:

Forest Service reclamation bond attachment:

Reclamation bond number:

Reclamation bond amount:

Reclamation bond rider amount:

Additional reclamation bond information attachment: