

UNITED STATES
DEPARTMENT OF THE INTERIOR
BUREAU OF LAND MANAGEMENT
Carlsbad Field Office
OCD ArtesiaFORM APPROVED
OMB NO. 1004-0137
Expires: January 31, 2018**SUNDRY NOTICES AND REPORTS ON WELLS**
Do not use this form for proposals to drill or to re-enter an abandoned well. Use form 3160-3 (APD) for such proposals.5. Lease Serial No.
NMNM030456

6. If Indian, Allottee or Tribe Name

7. If Unit or CA/Agreement, Name and/or No.
891000303X8. Well Name and No.
POKER LAKE UNIT CVX JV BS 24H9. API Well No.
30-015-41598-00-S110. Field and Pool or Exploratory Area
WCG06S253002O-BONE SPRING11. County or Parish, State
EDDY COUNTY, NM**SUBMIT IN TRIPLICATE - Other instructions on page 2**

1. Type of Well

☒ Oil Well ☐ Gas Well ☐ Other2. Name of Operator
BOPCO LPContact: TRACIE J CHERRY
E-Mail: tracie_cherry@xtoenergy.com3a. Address
6401 HOLIDAY HILL RD BLDG 5 SUITE 200
MIDLAND, TX 797073b. Phone No. (include area code)
Ph: 432.683.2277

4. Location of Well (Footage, Sec., T., R., M., or Survey Description)

Sec 1 T25S R30E SWSW 165FSL 1160FWL
32.091039 N Lat, 103.502139 W Lon**12. CHECK THE APPROPRIATE BOX(ES) TO INDICATE NATURE OF NOTICE, REPORT, OR OTHER DATA**

TYPE OF SUBMISSION

TYPE OF ACTION

☒ Notice of Intent☐ Subsequent Report☐ Final Abandonment Notice☐ Acidize☐ Alter Casing☐ Casing Repair☐ Change Plans☐ Convert to Injection☐ Deepen☐ Hydraulic Fracturing☒ New Construction☐ Plug and Abandon☐ Plug Back☐ Production (Start/Resume)☐ Reclamation☐ Recomplete☐ Temporarily Abandon☐ Water Disposal☐ Water Shut-Off☐ Well Integrity☐ Other

13. Describe Proposed or Completed Operation: Clearly state all pertinent details, including estimated starting date of any proposed work and approximate duration thereof. If the proposal is to deepen directionally or recompleat horizontally, give subsurface locations and measured and true vertical depths of all pertinent markers and zones. Attach the Bond under which the work will be performed or provide the Bond No. on file with BLM/BIA. Required subsequent reports must be filed within 30 days following completion of the involved operations. If the operation results in a multiple completion or recompleat in a new interval, a Form 3160-4 must be filed once testing has been completed. Final Abandonment Notices must be filed only after all requirements, including reclamation, have been completed and the operator has determined that the site is ready for final inspection.

RECEIVED

BOPCO, LP respectfully submits this sundry notice of intent to construct the Poker Lake Unit Row 2 pipeline on Federal surface.

The project will consist of a 53,982.61' pipeline corridor, 51,072.39' which is situated on Federal surface (2910.22', on State of New Mexico Trust lands). Multiple lines will be constructed along a common corridor and connect to the Poker Lake Unit North/South Trunk Line.

Pipeline request, line detail and plats are attached to this sundry.

JUL 13 2018

DISTRICT II-ARTESIA O.C.D.

GC 7-13-18
Accepted for record - NMOCStipulations attached to
oil and gas sites, buried
pipelines and overhead
electric lines.

Approved CCR 07-2-18 DOI-BLM-NM-PO 20-2018-0522-EA

14. I hereby certify that the foregoing is true and correct.

Electronic Submission #406966 verified by the BLM Well Information System

For BOPCO LP, sent to the Carlsbad

Committed to AFMSS for processing by PRISCILLA PEREZ on 03/08/2018 (18PP1259SE)

Name (Printed/Typed) TRACIE J CHERRY

Title REGULATORY ANALYST

Signature (Electronic Submission)

Date 03/07/2018

THIS SPACE FOR FEDERAL OR STATE OFFICE USE

Approved By

Title

Date

Conditions of approval, if any, are attached. Approval of this notice does not warrant or certify that the applicant holds legal or equitable title to those rights in the subject lease which would entitle the applicant to conduct operations thereon.

Office

Title 18 U.S.C. Section 1001 and Title 43 U.S.C. Section 1212, make it a crime for any person knowingly and willfully to make to any department or agency of the United States any false, fictitious or fraudulent statements or representations as to any matter within its jurisdiction.

(Instructions on page 2)

** BLM REVISED ** BLM REVISED ** BLM REVISED ** BLM REVISED ** BLM REVISED **

Pipeline Request

Poker Lake Unit Row 2 Pipeline Corridor and Compressor Stations

XTO Energy, Inc. / BOPCO, L.P.

Sections 15 19 20 21 & 22-24S-31E (Bureau of Land Management)

Sections 23 24 26 27 & 35-24S-30E (Bureau of Land Management)

Section 2-25S-30E (State of New Mexico BOPCO Lease)

Eddy County, New Mexico

1. PURPOSE AND NEED:

- a. XTO Energy, Inc / BOPCO, L.P respectfully requests a 180' trunk line corridor be granted through Poker Lake Unit Sections 15, 19, 20, 21 & 22-24S-31E, Sections 23, 24, 26, 27 & 35-24S-30E beginning in Sec 15 and ending in Section 2-T25S-R30E, on New Mexico State Land. See attached plats for full route description.
- b. The purpose of the trunk line is to extend the midstream takeaway system throughout contiguous acreage for the purpose of selling oil and gas, disposal of produced water, reuse of produced water, and interconnect critical pieces of operations safely and responsibly with consideration to the environment, long-term development, and mineral production.
- c. XTO Energy, Inc./BOPCO, L.P. anticipates a project start date of: July 15, 2018 with construction taking 8 months. Upon completion of construction, XTO Energy/BOPCO, L.P. requests 6mos to complete interim reclamation of the site and install necessary traffic deterrents whereupon a subsequent sundry will be filed with the Authorized Officer. If additional time is deemed necessary to complete construction or reclamation, a sundry will be filed with the Authorized Officer pursuant to anticipated activities.
- d. This trunk line corridor is to interconnect XTO Energy, Inc. and BOPCO, L.P. projects. XTO Energy, Inc. is the legal authority over BOPCO, L.P. until such time as the incorporation is dissolved, anticipated April 1, 2018. XTO Energy, Inc. as legal authority at this time over BOPCO, L.P., is considered as dual-lessee over BOPCO, L.P.'s acreage until such anticipated date as March 1, 2018 whereupon XTO Energy, Inc. will be changed to the official designated operator over all existing BOPCO, L.P. leaseholds.
- e. The trunk line as proposed is anticipated to hold 13 pipelines, all 22" or less in diameter, to carry oil, gas, water, produced water, electrical, fiber optics, high pressure gas, low pressure gas, and aide to a buried water system for drilling and completion activities throughout Poker Lake Unit. A final report of pipeline diameters will be submitted on a subsequent sundry to the BLM upon the completion of the trunk line.
- f. Pipeline specifics can be found on Exhibit A.
- g. All lines will be buried a minimum of 36" beneath the surface.
- h. All requested disturbance is anticipated to follow existing disturbance areas.
- i. The trunk line will be identified by signs at the point of origin and completion of the line in addition to all road crossings. Signs will state, at minimum: the holder's name and product being transported. All signs and information thereon will be posted in a permanent, conspicuous manner, and will be maintained in a legible condition for the life of the trunk line.
- j. The trunk line route will not be used as a road for purposes other than routine maintenance as determined necessary by the Authorized Officer in consultation with XTO Energy/BOPCO, L.P. before maintenance begins. XTO Energy/BOPCO, L.P. will take all necessary precautions to ensure that the pipeline route is not used as a roadway.

Temporary deterrence structures will be used as needed and approved by the Authorized Officer.

- k. All permanent aboveground structures (on site six months or longer), such as risers, constructed or installed on location and not subject to safety requirements will be painted an earth-tone color such as 'Shale Green' as determined by the Authorized Officer that reduces the visual impacts on the built environment.
- l. Escape ramps will be constructed and maintained that are not fenced, screened, or netted to prevent livestock, wildlife, and humans from becoming entrapped. XTO Energy/BOPCO, L.P. will construct and maintain escape ramps, ladders, or other methods of avian/terrestrial wildlife escape in the trenches according to the following criteria:
 - i. Any trench left open for 8 hours or less will not have escape ramps. However, prior to backfilling, XTO/BOPCO, L.P. shall inspect the trench for wildlife, remove all trapped wildlife, and release them at least 100 yards from the trench.
 - ii. Any trench left open for more than 8 hours will have earthen escape ramps built at no more than a 30 degree slope and spaced no more than 500' apart inside of the trench.

2. PIPELINE LOCATION:

- a. See Attached Plats

3. FACILITY DESIGN FACTORS:

- a. See Attached Table (Exhibit A)

4. LOCATION OF PROPOSED FACILITIES

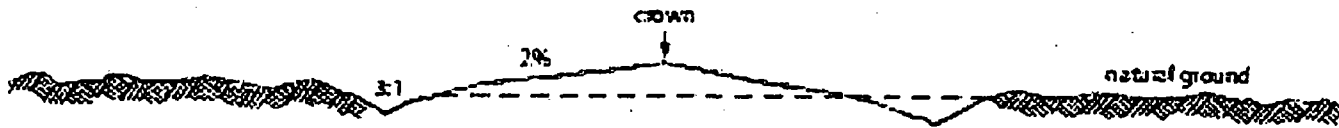
- a. **Compressor Stations.** Two (2) Compressor Stations were staked along the Poker Lake Unit Row 2 Corridor. Each compressor station was staked at 1150'x1100 to support anticipated Row 2 long-term mineral development and production volumes. A site-security diagram and as-built plat will be submitted on a subsequent sundry to BLM upon completion of construction. The location of the compressor stations are:
 - i. Compressor Station #1 (Wildcat): E/2, Sec 21-T24S-R31E, County. See attached plat from RRC Surveying.
 - ii. Compressor Station #2 (Spartan): W/2 Sec 24-T24S-30E, County. See attached plat from RRC Surveying
- b. **Flare.** One flare stack will be located on each compressor station. Each flare will be sized appropriately and with 150' of distance between all facility equipment, road and well pad locations for safety purposes.
- c. **Communication Tower.** A communication tower will be located on the compressor station pads and will be sized to 189' set in a concrete foundation for purposes of long-distance communication. An FAA permit will be acquired by XTO Energy, Inc./BOPCO, L.P. prior to construction of the facility and construction will not ensue until such time as all permits are received from appropriate regulatory entities.
- d. **Aboveground Structures:** All permanent (on site six months or longer) aboveground structures constructed or installed on location and not subject to safety requirements will be painted earth-tone colors such as 'Carlsbad Canyon' that reduce the visual impacts of the built environment.
- e. **Containment Berms:** Containment berms will be constructed completely around any production facilities designed to hold fluids. The containment berms will be constructed

of compacted subsoil, be sufficiently impervious, hold 1 ½ times the capacity of the largest tank and away from cut or fill areas.

- f. **Electrical:** Approximately 34,171.02' (total) of electrical line will be constructed following the proposed pipeline corridor and access roads. There will be 2289.24' of 15kv distribution line servicing the compressor stations, 31,881.78' of 115kv transmission line to bring electricity from the North/South Trunk line to be constructed. Fiber optic will be strung with the electric lines. See attached plat by RRC Surveying.

5. **PROPOSED ROADS:**

- a. **New Roads.** There is a total of 34,417.93' or 6.519 miles of proposed and staked roads.
- b. **Anticipated Traffic.** After construction completion, travel to each well site will include only those required to maintain and monitor the appropriate facilities..
- c. **Routing.** All equipment and vehicles will be confined to the travel routes laid out in the proposed road corridors or existing roads as detailed in the sundry application otherwise approved by the BLM and applied for by XTO Energy, Inc./BOPCO, L.P.
- d. **Road Dimensions.** The maximum width of the driving surface of new roads will be 20 feet. The roads will be crowned and ditched with a 2% slope from the tip of the crown to the edge of the driving surface. The ditches will be 1 foot deep with 3:1 slopes. The driving surface will be made of 6" rolled and compacted caliche.



Level Ground Section

- e. **Surface Material.** Surface material will be native caliche. The average grade of all roads will be approximately 3%.
- f. **Fence Cuts:** No.
- g. **Fences:** No.
- h. **Cattle Guards:** No.
- i. **Turnouts:** No.
- j. **Culverts:** No.
- k. **Cuts and Fills:** Not significant.
- l. **Topsoil.** Approximately 6 inches of topsoil (root zone) will be stripped from the proposed access road prior to any further construction activity. The topsoil that was stripped will be spread along the edge of the road and within the ditch. The topsoil will be seeded with the proper seed mix designated by the BLM.
- m. **Maintenance.** The access road will be constructed and maintained as necessary to prevent soil erosion and accommodate all-weather traffic. The road will be crowned and ditched with water turnouts installed as necessary to provide for proper drainage along with access road route.
- n. **Drainage.** The access road and associated drainage structures will be constructed and maintained in accordance with road guidelines contained in the joint BLM/USFS publication: Surface Operating Standards for Oil and Gas Exploration and Development,

The Gold Book, Fourth Edition and/or BLM Manual Section 9113 concerning road construction standards on projects subject to federal jurisdiction.

6. ADDITIONAL GOVERNMENT AGENCIES INVOLVED:

- a. New Mexico State Land Office. Appropriate Right-of-Ways, where needed, have been filed with the New Mexico State Land Office.

7. METHODS OF HANDLING WASTE DISPOSAL:

- a. Portable, self-contained chemical toilets will be provided for human waste disposal. Upon completion of operations, or as required, the toilet holding tanks will be pumped and the contents thereof disposed of in an approved sewage disposal facility. All state and local laws and regulations pertaining to disposal of human and solid waste will be complied with. This equipment will be properly maintained during the drilling and completion operations and will be removed when all operations are complete.
- b. All trash, junk, and other waste materials will be contained in trash cages or bins to prevent scattering and will be removed and deposited in an approved sanitary landfill. Immediately after trunk line completion all debris and other waste materials on and around the well location not contained in the trash cage will be cleaned up and removed from the location. No potentially adverse materials or substances will be left on the location.
- c. Hazardous Materials.
 - i. XTO Energy, Incorporated/BOPCO, L.P., and its contractors will comply with all applicable Federal, State and local laws and regulations, existing or hereafter enacted promulgated, with regard to any hazardous material, as defined in this paragraph, that will be used, produced, transported or stored on the oil and gas lease. "Hazardous material" means any substance, pollutant or contaminant that is listed as hazardous under the CERCLA of 1980, as amended, 42 U.S.C 9601 et seq., and its regulation. The definition of hazardous substances under CERCLA includes any "hazardous waste" as defined in the RCRA of 1976, as amended, 42 U.S.C. 6901 et seq., and its regulations. The term hazardous material also includes any nuclear or nuclear by-product material as defined by the Atomic Energy Act of 1954, as amended, 42 U.S.C. 2011 et seq. The term does not include petroleum, including crude oil or any fraction thereof that is not otherwise specifically listed or designated as a hazardous substance under CERCLA Section 101 (14) U.S.C. 9601 (14) nor does the term include natural gas.
 - ii. No hazardous substances or wastes will be stored on the location after completion of the trunk line.
 - iii. Chemicals brought to location will be on the Toxic Substance Control Act (TSCA) approved inventory list.
 - iv. All undesirable events (fires, accidents, blowouts, spills, discharges) as specified in Notice to Lessees (NTL) 3A will be reported to the BLM Carlsbad Field Office. Major events will be reported verbally within 24 hours, followed by a written report within 15 days. "Other than Major Events" will be reported in writing within 15 days.

8. ANCILLARY FACILITIES:

No campsite, airstrip or other facilities will be built as a result of this operation. No staging areas are needed.

9. PLANS FOR SURFACE RECLAMATION:

Interim Reclamation:

Definition: Reclamation includes disturbed areas where the original landform and a natural vegetative community will be restored and it is anticipated the site will not be disturbed for future development.

Reclamation Standards:

After construction has taken place, all areas of the applied for corridor will be reclaimed and seeded as per BLM requirements for reclamation.

Vegetation, soil, and rocks left as a result of construction of maintenance activity will be randomly scattered on the applied for pipeline corridor and will not be left in rows, piles, or berms, unless otherwise approved by the Authorized Officer. The entire pipeline corridor shall be recontoured to match the surrounding landscape. The backfilled soil shall be compacted and a 6-inch berm will be left over the ditch line to allow for settling back to grade.

Erosion features are equal to or less than surrounding area and erosion control is sufficient so that water naturally infiltrates into the soil and gulying, headcutting, slumping, and deep or excessive rills (greater than 3 inches) are not observed.

In those areas where erosion control structure are required to stabilize soil conditions, XTO Energy, Incorporated / BOPCO, L.P. will install such structures as are suitable for specific soil conditions being encountered and which are in accordance with sound resource management practices.

The location will then be ripped and seeded. A self-sustaining, vigorous, diverse, native (or otherwise approved) plant community will be established on the site with a density sufficient to control erosion and invasion by non-native plants and to re-establish wildlife habitat or forage production. At a minimum, the established plant community will consist of species included in the seed mix and/or desirable species occurring in the surrounding natural vegetation.

The site will be free of State-or County-listed noxious weeds, oil field debris and equipment, and contaminated soil. Invasive and non-native weeds will be controlled.

Seeding:

- Seedbed Preparation: Initial seedbed preparation will consist of recontouring to the appropriate interim or final reclamation standard. All compacted areas to be seeded will be ripped to a minimum depth of 18 inches with a minimum furrow spacing of 2 feet, followed by recontouring the surface and then evenly spreading the stockpiled topsoil. Prior to seeding, the seedbed will be scarified to a depth of no less than 4-6 inches. If the site is to be broadcast seeded, the surface will be left rough enough to trap seed and snow, control erosion, and increase water infiltration.
- If broadcast seeding is to be used and is delayed, final seedbed preparation will consist of contour cultivating to a depth of 4-6 inches within 24 hours prior to

seeding, dozer tracking, or other imprinting in order to break the soil crust and create seed germination micro-sites.

- Seed Application. Seeding will be conducted no more than two weeks following completion of final seedbed preparation. A certified weed-free seed mix designed by the BLM to meet reclamation standards will be used.
- If the site is harrowed or dragged, seed will be covered by no more than 0.25 inch of soil.

10. OTHER INFORMATION:

- a. There is no permanent or live water in the immediate area.
- b. There are no dwellings within 2 miles of this location.
- c. A Class III Cultural Resources Examination has been completed by Boone Archaeological Services and the results will be forwarded to the BLM office.
- d. A 3rd Party EA was completed and submitted to the BLM office.
- e. A wildlife survey was completed and submitted to the BLM office.

11. BOND COVERAGE:

- a. XTO Energy, Inc. Bond Coverage is Nationwide; Bond Number UTB000138.
- b. BOPCO, LP Bond Coverage is Nationwide; Bond Number COB000050

Poker Lake Unit Row 2 Pipeline Corridor and Compressor Stations
XTO Energy, Inc. / BOPCO, L.P.
Sections 15, 19, 20, 21, & 22-24S-31E (Bureau of Land Management)
Sections 23, 24, 26, 27, & 35-24S-30E (Bureau of Land Management)
Section 2-25S-30E (State of New Mexico BOPCO Lease)
Eddy County, New Mexico

Total Pipelines in Corridor:	Up to 13
Total Pipeline Width:	180' (150' to compressor stations)
Total Federal Pipeline Length:	51,072.39
Temporary Federal Surface Disturbance:	51,072.39
Permanent Federal Surface Disturbance:	73.88 ac
State of New Mexico Trust Lands:	2910.22'

Row 2 East side to Compressor Station #1
Sec 15, 22, 21

Type	MAWP	Material	Approx. Length
o Oil: 16"	1440	Steel	5991.72
o Low Pressure Gas 1: 16"	285	Steel	5991.72
o Low Pressure Gas 2: 12"	285	Steel	5991.72
o Gas Lift: 6"	1440	Steel	5991.72
o Fuel Gas: 6"	1440	Steel	5991.72
o Frac Water: 22" or smaller	250	Poly	5991.72
o Produced Water: 22" or smaller	250	Poly	5991.72
o Production Transfer (Water): 16"	250	Poly	5991.72
o Production Transfer (Oil): 8"	250	Poly	5991.72
o Road 20'	N/A	N/A	5991.72
o Electric	N/A	N/A	5991.72
o Fiber Optic	N/A	N/A	5991.72

Row 2 Western Compressor Station #1 to Frac Pad
Sec 21, 20, 19

Type	MAWP	Material	Approx. Length
o Oil: 16"	1440	Steel	17546.36
o Low Pressure Gas 1: 20"	285	Steel	17546.36
o Low Pressure Gas 2: 16"	285	Steel	17546.36
o High Pressure Gas: 16"	1440	Steel	17546.36
o Gas Lift: 8"	1440	Steel	17546.36
o Fuel Gas: 6"	1440	Steel	17546.36
o Condensate: 4"	1440	Steel	17546.36
o Frac Water: 22" or smaller	250	Poly	17546.36
o Produced Water: 22" or smaller	250	Poly	17546.36
o Production Transfer (Water): 16"	250	Poly	17546.36
o Production Transfer (Oil): 8"	250	Poly	17546.36
o Road 20'	N/A	N/A	17546.36
o Electric	N/A	N/A	17546.36
o Fiber Optic	N/A	N/A	17546.36

Row 2 Cont'd
Sec 25, 24

Type	MAWP	Material	Approx. Length
o Oil: 16"	1440	Steel	8343.7
o Low Pressure Gas 1: 20"	285	Steel	8343.7
o Low Pressure Gas 2: 16"	1440	Steel	8343.7
o High Pressure Gas: 16"	1440	Steel	8343.7
o Gas Lift: 8"	1440	Steel	8343.7
o Fuel Gas: 6"	1440	Steel	8343.7
o Condensate: 4"	1440	Steel	8343.7
o Frac Water: 22" or smaller	250	Poly	8343.7
o Produced Water: 22"	250	Poly	8343.7
o Recycle Water: 22" or smaller	250	Poly	8343.7
o Fresh Water: 22" or smaller	250	Poly	8343.7
o Production Transfer (Water): 16"	250	Poly	8343.7
o Production Transfer (Oil): 8"	250	Poly	8343.7
o Road 20'	N/A	N/A	8343.7
o Electric	N/A	N/A	8343.7
o Fiber Optic	N/A	N/A	8343.7

Row 2 North Trunk Connection from Row 2
Sec 23, 24, 27, 35

Type	MAWP	Material	Approx. Length
o Oil: 20"	1440	Steel	13368.87
o High Pressure Gas: 20"	1440	Steel	13368.87
o High Pressure Gas 2: 16"	1440	Steel	13368.87
o NGL: 8"	1440	Steel	13368.87
o Fuel Gas: 8"	1440	Steel	13368.87
o Condensate: 6"	1440	Steel	13368.87
o Frac Water: 22" or smaller	250	Poly	13368.87
o Produced Water: 22" or smaller	250	Poly	13368.87
o Recycle Water: 22" or smaller	250	Poly	13368.87
o Fresh Water: 22" or smaller	250	Poly	13368.87

Row 2 to RB Tank Battery
Sec 26

Type	MAWP	Material	Approx. Length
o Oil: 8"	1440	Steel	521.96
o Produced Water: 22"	250	Poly	521.96

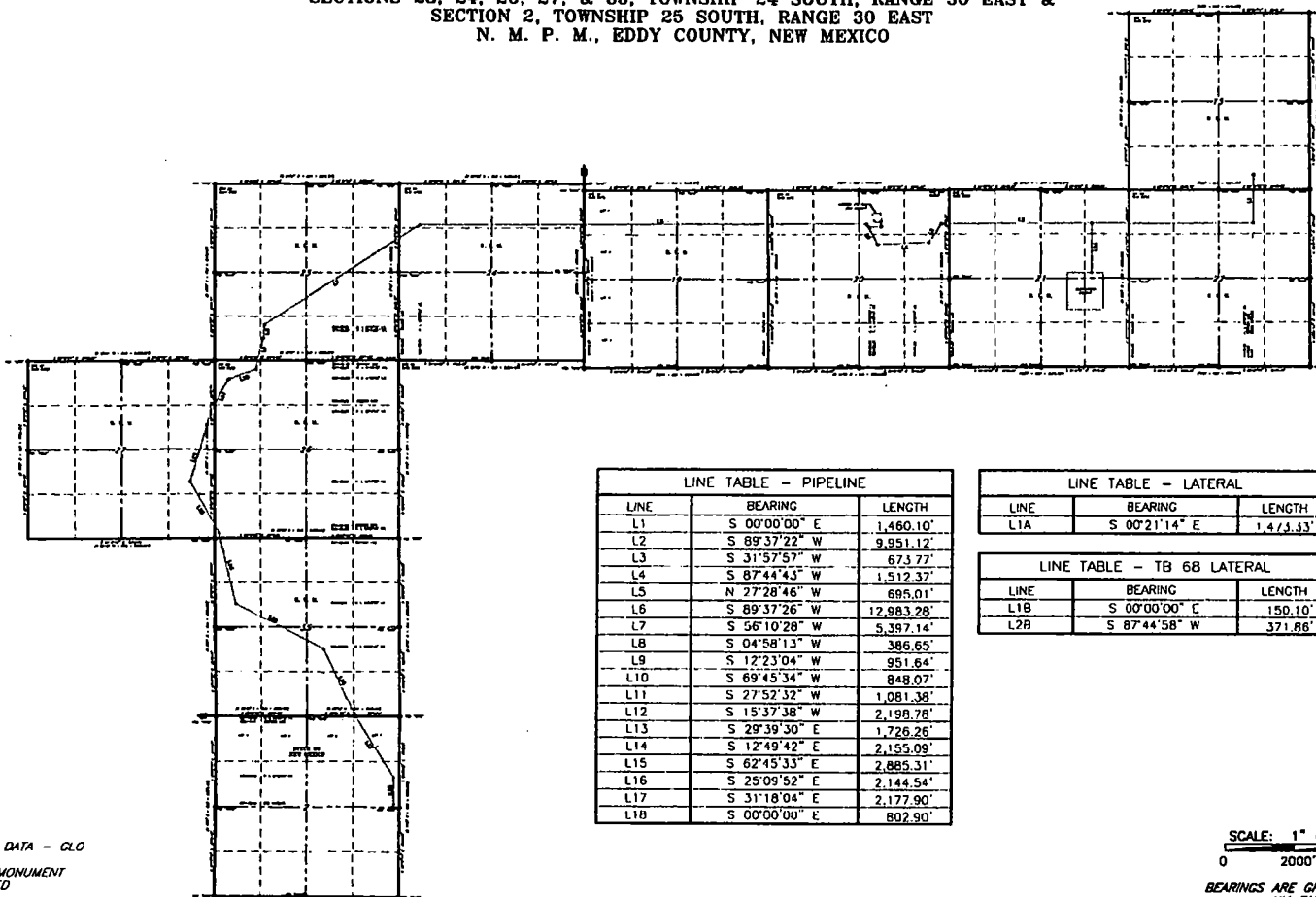
Compressor Stations

	Dimensions	Approx. disturbance
o Row 2 Compressor #1	1150 x 1100	29,040 ac
o Row 2 Compressor #2	1150 x 1100	29,040 ac

Compressor Station #1 Connection to Road (Width) 350' Width
Sec 28

Type	MAWP	Material	Approx. Length
o Oil: 4"	1440	Steel	1473.33
o Low Pressure Gas 1: 16"	285	Steel	1473.33
o Low Pressure Gas 2: 12"	285	Steel	1473.33
o Low Pressure Gas 3: 20"	285	Steel	1473.33
o Low Pressure Gas 4: 16"	285	Steel	1473.33
o High Pressure Gas: 16"	1440	Steel	1473.33
o Gas Lift 1: 6"	1440	Steel	1473.33
o Gas Lift 2: 8"	1440	Steel	1473.33
o Fuel Gas: 4"	1440	Steel	1473.33
o Condensate: 4"	1440	Steel	1473.33
o Produced Water: 4"	250	Poly	1473.33
o Electric	N/A	N/A	1473.33
o Fiber Optic	N/A	N/A	1473.33
o Road 20'	N/A	N/A	916.12

XTO ENERGY, INC.
OVERALL PROPOSED POKER LAKE ROW 2 PIPELINE & LATERAL FOR COMPRESSOR STATION
 SECTIONS 15, 19, 20, 21, & 22, TOWNSHIP 24 SOUTH, RANGE 31 EAST &
 SECTIONS 23, 24, 28, 27, & 35, TOWNSHIP 24 SOUTH, RANGE 30 EAST &
 SECTION 2, TOWNSHIP 25 SOUTH, RANGE 30 EAST
 N. M. P. M., EDDY COUNTY, NEW MEXICO



LINE TABLE -- PIPELINE		
LINE	BEARING	LENGTH
L1	S 00°00'00" E	1,460.10'
L2	S 89°37'22" W	9,951.12'
L3	S 31°57'57" W	673.77'
L4	S 87°44'43" W	1,512.37'
L5	N 27°28'46" W	695.01'
L6	S 89°37'26" W	12,983.28'
L7	S 56°10'28" W	5,397.14'
L8	S 04°58'13" W	386.65'
L9	S 12°23'04" W	951.64'
L10	S 69°45'34" W	848.07'
L11	S 27°52'32" W	1,081.38'
L12	S 15°37'38" W	2,198.78'
L13	S 29°39'30" E	1,726.26'
L14	S 12°49'42" E	2,155.09'
L15	S 62°45'33" E	2,885.31'
L16	S 25°09'52" E	2,144.54'
L17	S 31°18'04" E	2,177.90'
L18	S 00°00'00" E	802.90'

LINE TABLE -- LATERAL		
LINE	BEARING	LENGTH
L1A	S 00°21'14" E	1,473.33'

LINE TABLE -- TB 68 LATERAL		
LINE	BEARING	LENGTH
L1B	S 00°00'00" E	150.10'
L2B	S 87°44'58" W	371.86'

SCALE: 1" = 4000'
 0 2000' 4000'
 BEARINGS ARE GRID NAD 83
 NM EAST
 DISTANCES ARE HORIZ. GROUND.

LEGEND
 () RECORD DATA - GLO
 ♦ FOUND MONUMENT
 AS NOTED
 — PROPOSED PIPELINE

Copyright 2016 - All Rights Reserved

SCALE: 1" = 4000'
 DATE: 7/19/17
 SURVEYED BY: JM/EF
 DRAWN BY: LA
 APPROVED BY: RMH
 SHEET: 1 OF 14

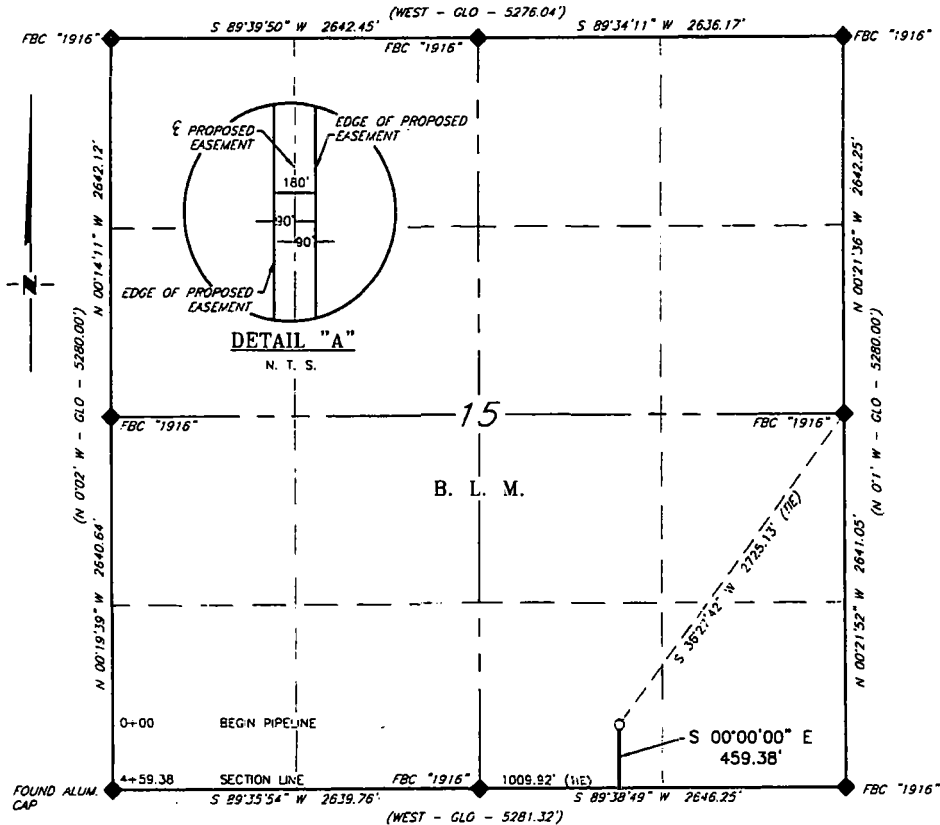
RRC

308 W. BROADWAY ST., HOBBS, NM 88240 (575) 964-8200

NO.	REVISION	DATE

JOB NO.: LS1707418A
 DWG. NO.: 1707418A-1

XTO ENERGY, INC.
PROPOSED POKER LAKE ROW 2 PIPELINE
SECTION 15, T24S, R31E,
N. M. P. M., EDDY CO., NEW MEXICO



DESCRIPTION

A strip of land 180 feet wide, being 459.38 feet or 27.841 rods in length, lying in Section 15, Township 24 South, Range 31 East, N. M. P. M., Eddy County, New Mexico, being 90 feet left and 90 feet right of the following described survey of a centerline across B. L. M. land:

BEGINNING at Engr. Sta. 0+00, a point in the Southeast quarter of Section 15, which bears, S 36°27'42" W, 2,725.13 feet from a brass cap, stamped "1916", found for the East quarter corner of Section 15;

Thence S 00°00'00" E, 459.38 feet, to Engr. Sta. 4+59.38, a point on the South line of Section 15, which bears, N 89°38'49" E, 1,009.92 feet from a brass cap, stamped "1916", found for the South quarter corner of Section 15.

Said strip of land contains 1.898 acres, more or less, and is allocated by forties as follows:

SW/4 SE/4 27.841 Rods 1.898 Acres

SCALE: 1" = 1000'

0 500' 1000'

BEARINGS ARE GRND MAG & 3
 NM EAST
 DISTANCES ARE HORIZ. GROUND.

LEGEND

() RECORD DATA - GLO

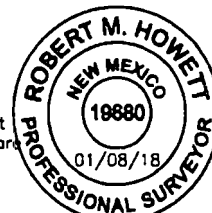
◆ FOUND MONUMENT
 AS NOTED

— PROPOSED PIPELINE

I, R. M. Howett, a N. M. Professional Surveyor, hereby certify that I prepared this plat from an actual survey made on the ground under my direct supervision, said survey and plat meet the Min. Stds. for Land Surveying in the State of N. M. and are true and correct to the best of my knowledge and belief.

Robert M. Howett

Robert M. Howett NM PS 19680



Copyright 2016 - All Rights Reserved

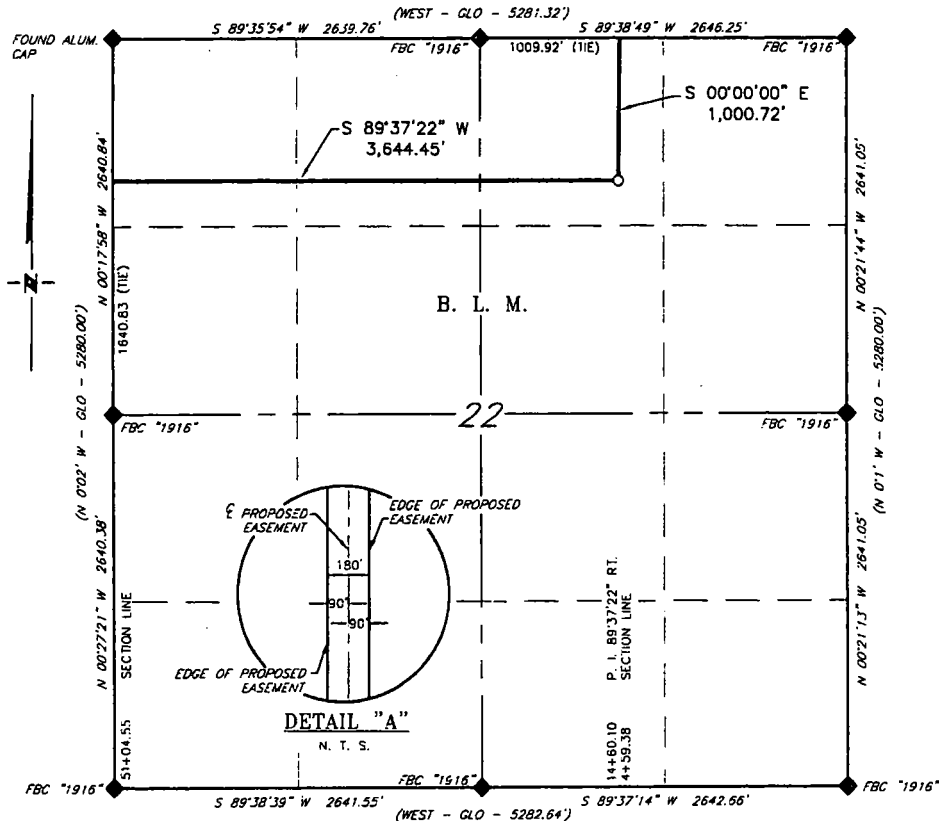
NO.	REVISION	DATE
JOB NO.:	LS1707418A	
DWG. NO.:	1707418A-2	

RRC

308 W. BROADWAY ST., HOBBS, NM 88240 (575) 964-8200

SCALE: 1" = 1000'
DATE: 7/19/17
SURVEYED BY: JM/EF
DRAWN BY: LA
APPROVED BY: RMH
SHEET: 2 OF 14

XTO ENERGY, INC.
PROPOSED POKER LAKE ROW 2 PIPELINE
SECTION 22, T24S, R31E,
N. M. P. M., EDDY CO., NEW MEXICO



DESCRIPTION

A strip of land 180 feet wide, being 4,645.17 feet or 281.525 rods in length, lying in Section 22, Township 24 South, Range 31 East, N. M. P. M., Eddy County, New Mexico, being 90 feet left and 90 feet right of the following described survey of a centerline across B. L. M. land:

BEGINNING at Engr. Sta. 4+59.38, a point on the North line of Section 22, which bears, N 89°38'49" E, 1,009.92 feet from a brass cap, stamped "1916", found for the North quarter corner of Section 22;

Thence S 00°00'00" E, 1,000.72 feet, to Engr. Sta. 14+60.10, a P. I. of 89°37'22" right;

Thence S 89°37'22" W, 3,644.45 feet, to Engr. Sta. 51+04.55, a point on the West line of Section 22, which bears, N 00°17'58" W, 1,640.83 feet from a brass cap, stamped "1916", found for the West quarter corner of Section 22.

Said strip of land contains 19.195 acres, more or less, and is allocated by forties as follows:

NW/4 NE/4	121.437 Rods	8.281 Acres
NE/4 NW/4	80.044 Rods	5.457 Acres
NW/4 NW/4	80.044 Rods	5.457 Acres

SCALE: 1" = 1000'
0 500' 1000'

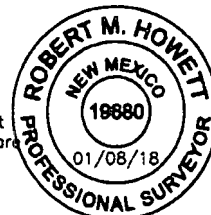
BEARINGS ARE GRND NAD 83
NM EAST
DISTANCES ARE HORIZ. GROUND.

LEGEND

- () RECORD DATA - GLO
- ◆ FOUND MONUMENT AS NOTED
- PROPOSED PIPELINE

I, R. M. Howett, a N. M. Professional Surveyor, hereby certify that I prepared this plat from an actual survey made on the ground under my direct supervision, said survey and plat meet the Min. Stds. for Land Surveying in the State of N. M. and are true and correct to the best of my knowledge and belief.

Robert M. Howett
Robert M. Howett NM PS 19680



Copyright 2016 - All Rights Reserved

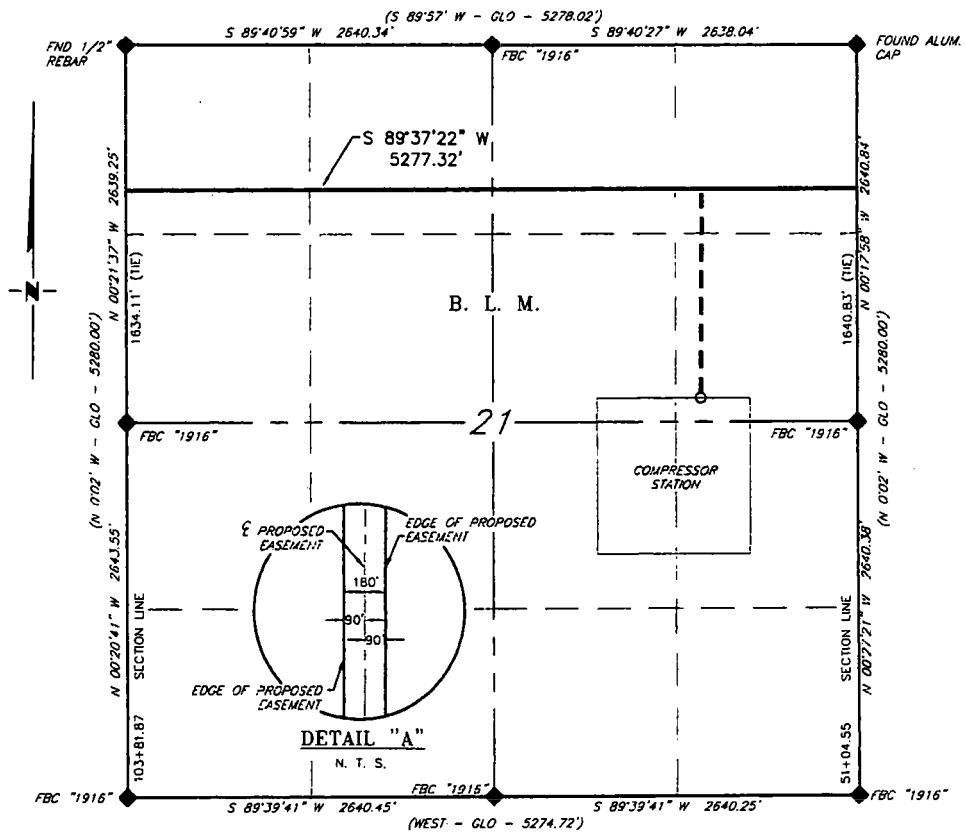
NO.	REVISION	DATE
JOB NO.:	LS1707418A	
DWG. NO.:	1707418A-3	

RRC

308 W. BROADWAY ST., HOBBS, NM 88240 (575) 964-8200

SCALE: 1" = 1000'
DATE: 7/19/17
SURVEYED BY: JM/EF
DRAWN BY: LA
APPROVED BY: RMH
SHEET: 3 OF 14

XTO ENERGY, INC.
PROPOSED POKER LAKE ROW 2 PIPELINE
SECTION 21, T24S, R31E,
N. M. P. M., EDDY CO., NEW MEXICO



DESCRIPTION

A strip of land 180 feet wide, being 5,277.32 feet or 319.838 rods in length, lying in Section 21, Township 24 South, Range 31 East, N. M. P. M., Eddy County, New Mexico, being 90 feet left and 90 feet right of the following described survey of a centerline across B. L. M. land:

BEGINNING at Engr. Sta. 51+04.55, a point on the East line of Section 21, which bears, N 00°17'58" W, 1,640.83 feet from a brass cap, stamped "1916", found for the East quarter corner of Section 21;

Thence S 89°37'22" W, 5,277.32 feet, to Engr. Sta. 103+81.87, a point on the West line of Section 21, which bears, N 00°21'37" W, 1,640.11 feet from a brass cap, stamped "1916", found for the West quarter corner of Section 21.

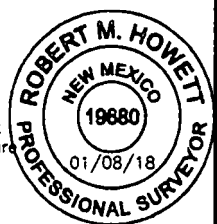
Said strip of land contains 21.807 acres, more or less, and is allocated by forties as follows:

NE/4 NE/4	79.912 Rods	5.449 Acres
NW/4 NE/4	79.912 Rods	5.450 Acres
NE/4 NW/4	80.007 Rods	5.454 Acres
NW/4 NW/4	80.007 Rods	5.454 Acres

SCALE: 1" = 1000'
 0 500' 1000'
 BEARINGS ARE GRND NAD 83
 NM EAST
 DISTANCES ARE HORIZ. GROUND.
 LEGEND
 () RECORD DATA - GLO
 FOUND MONUMENT AS NOTED
 PROPOSED PIPELINE

I, R. M. Howett, a N. M. Professional Surveyor, hereby certify that I prepared this plat from an actual survey made on the ground under my direct supervision, said survey and plat meet the Min. Stds. for Land Surveying in the State of N. M. and are true and correct to the best of my knowledge and belief.

Robert M. Howett
 Robert M. Howett NM PS 19680



Firm No.: TX 10193838 NM 4655451

Copyright 2016 - All Rights Reserved

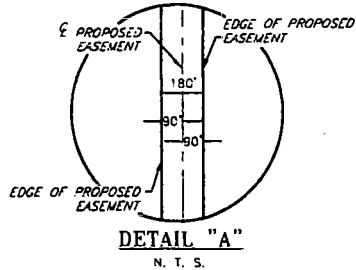
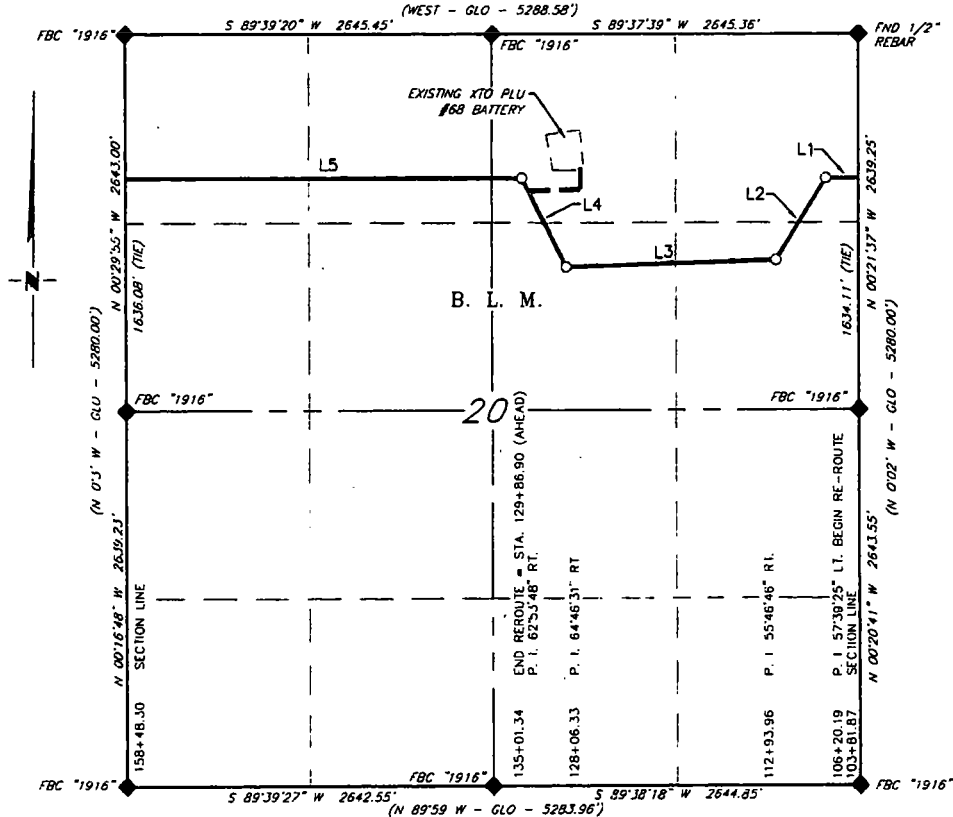
NO.	REVISION	DATE
JOB NO.:	LS1707418A	
DWG. NO.:	1707418A-4	



308 W. BROADWAY ST., HOBBS, NM 88240 (575) 964-8200

SCALE: 1" = 1000'
DATE: 7/19/17
SURVEYED BY: JM/EF
DRAWN BY: LA
APPROVED BY: RMH
SHEET: 4 OF 14

XTO ENERGY, INC.
PROPOSED POKER LAKE ROW 2 PIPELINE RE-ROUTE
SECTION 20, T24S, R31E,
N. M. P. M., EDDY CO., NEW MEXICO



LINE TABLE		
LINE	BEARING	LENGTH
L1	S 89°37'22" W	238.32'
L2	S 31°57'57" W	673.77'
L3	S 87°44'43" W	1,512.37'
L4	N 27°28'46" W	695.01'
L5	S 89°37'26" W	2,861.40'

SCALE: 1" = 1000'
0 500' 1000'

BEARINGS ARE GRND MAG B3
NM EAST
DISTANCES ARE HORIZ. GROUND.

LEGEND

- () RECORD DATA - GLO
- ◆ FOUND MONUMENT AS NOTED
- PROPOSED PIPELINE

I, R. M. Howett, a N. M. Professional Surveyor, hereby certify that I prepared this plat from an actual survey made on the ground under my direct supervision, said survey and plat meet the Min. Stds. for Land Surveying in the State of N. M. and are true and correct to the best of my knowledge and belief.

Robert M. Howett
Robert M. Howett NM PS 19680



Copyright 2016 - All Rights Reserved

NO.	REVISION	DATE
JOB NO.:	LS1712803A	
DWG. NO.:	1-1712803A	

RRC

308 W. BROADWAY ST., HOBBS, NM 88240 (575) 964-8200

SCALE: 1" = 1000'
DATE: 12/11/17
SURVEYED BY: JM/JC
DRAWN BY: CMJ
APPROVED BY: RMH
SHEET: 1 OF 2

XTO ENERGY, INC.
PROPOSED POKER LAKE ROW 2 PIPELINE RE-ROUTE
SECTION 20, T24S, R31E,
N. M. P. M., EDDY CO., NEW MEXICO

DESCRIPTION

A strip of land 180 feet wide, being 5,980.87 feet or 362.477 rods in length, lying in Section 20, Township 24 South, Range 31 East, N. M. P. M., Eddy County, New Mexico, being 90 feet left and 90 feet right of the following described survey of a centerline across B. L. M. land:

BEGINNING at Engr. Sta. 103+81.87 a point on the East line of Section 20, which bears, N 00°21'37" W, 1,634.11 feet from a brass cap, stamped "1916", found for the East quarter corner of Section 21;

Thence S 89°37'22" W, 238.32 feet, to Engr. Sta. 106+20.19, a P. I. of 57°39'25" left;

Thence S 31°57'57" W, 673.77 feet, to Engr. Sta. 112+93.96, a P. I. of 55°46'46" right;

Thence S 87°44'43" W, 1,512.37 feet, to Engr. Sta. 128+06.33, a P. I. of 64°46'31" right;

Thence N 27°28'46" W, 695.01 feet, to Engr. Sta. 135+01.34 (back), Sta. 129+86.90 (ahead), a P. I. of 62°53'48" left;

Thence S 89°37'26" W, 2,861.40 feet, to Engr. Sta. 158+48.30, a point on the West line of Section 20, which bears, N 00°29'55" W, 1,636.08 feet from a brass cap, stamped "1916", found for the West quarter corner of Section 20.

Said strip of land contains 24.714 acres, more or less, and is allocated by forties as follows:

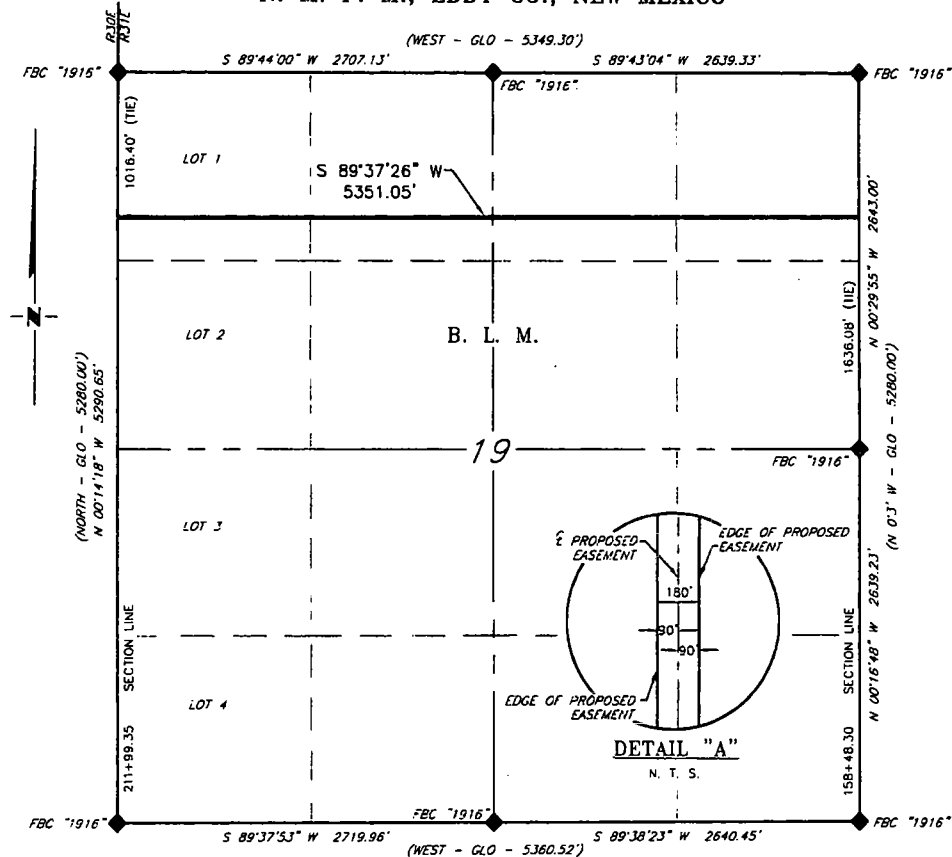
NE 1/4 NE 1/4	37.007 Rods	2.523 Acres
SE 1/4 NE 1/4	62.180 Rods	4.239 Acres
SW 1/4 NE 1/4	68.446 Rods	4.667 Acres
NW 1/4 NE 1/4	34.664 Rods	2.363 Acres
NE 1/4 NW 1/4	80.090 Rods	5.461 Acres
NW 1/4 NW 1/4	80.090 Rods	5.461 Acres

Copyright 2016 - All Rights Reserved

<div style="text-align: center;">  </div>			SCALE: 1" = 1000'
			DATE: 12/11/17
			SURVEYED BY: JM/JC
			DRAWN BY: CMJ
NO.	REVISION	DATE	APPROVED BY: RMH
JOB NO.: LS1712803A			SHEET: 2 OF 2
DWG. NO.: 2-1712803A			

308 W. BROADWAY ST., HOBBS, NM 88240 (575) 964-8200

XTO ENERGY, INC.
PROPOSED POKER LAKE ROW 2 PIPELINE
SECTION 19, T24S, R31E,
N. M. P. M., EDDY CO., NEW MEXICO



DESCRIPTION

A strip of land 180 feet wide, being 5,351.05 feet or 324.306 rods in length, lying in Section 19, Township 24 South, Range 31 East, N. M. P. M., Eddy County, New Mexico, being 90 feet left and 90 feet right of the following described survey of a centerline across B. L. M. land:

BEGINNING at Engr. Sta. 158+48.30, a point on the East line of Section 19, which bears, N 00°29'55" W, 1,636.08 feet from a brass cap, stamped "1916", found for the East quarter corner of Section 19;

Thence S 89°37'26" W, 5,351.05 feet, to Engr. Sta. 211+99.35, a point on the West line of Section 19, which bears, S 00°14'18" E, 1,016.40 feet from a brass cap, stamped "1916", found for the Northwest corner of Section 19.

Said strip of land contains 22.112 acres, more or less, and is allocated by forties as follows:

NE/4 NE/4	80.044 Rods	5.458 Acres
NW/4 NE/4	80.044 Rods	5.458 Acres
NE/4 NW/4	80.000 Rods	5.454 Acres
Lot 1	84.218 Rods	5.742 Acres

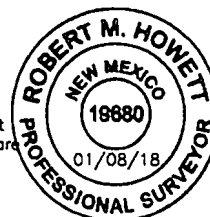
SCALE: 1" = 1000'
0 500' 1000'

BEARINGS ARE GRND MAG BY
NM EAST
DISTANCES ARE HORIZ. GROUND.

LEGEND
() RECORD DATA - SLG
◆ FOUND MONUMENT
AS NOTED
— PROPOSED PIPELINE

I, R. M. Howett, a N. M. Professional Surveyor, hereby certify that I prepared this plat from an actual survey made on the ground under my direct supervision, said survey and plat meet the Min. Stds. for Land Surveying in the State of N. M. and are true and correct to the best of my knowledge and belief.

Robert M. Howett
Robert M. Howett NM PS 19680



Firm No.: TX 10193832 NM 4655451

Copyright 2016 - All Rights Reserved

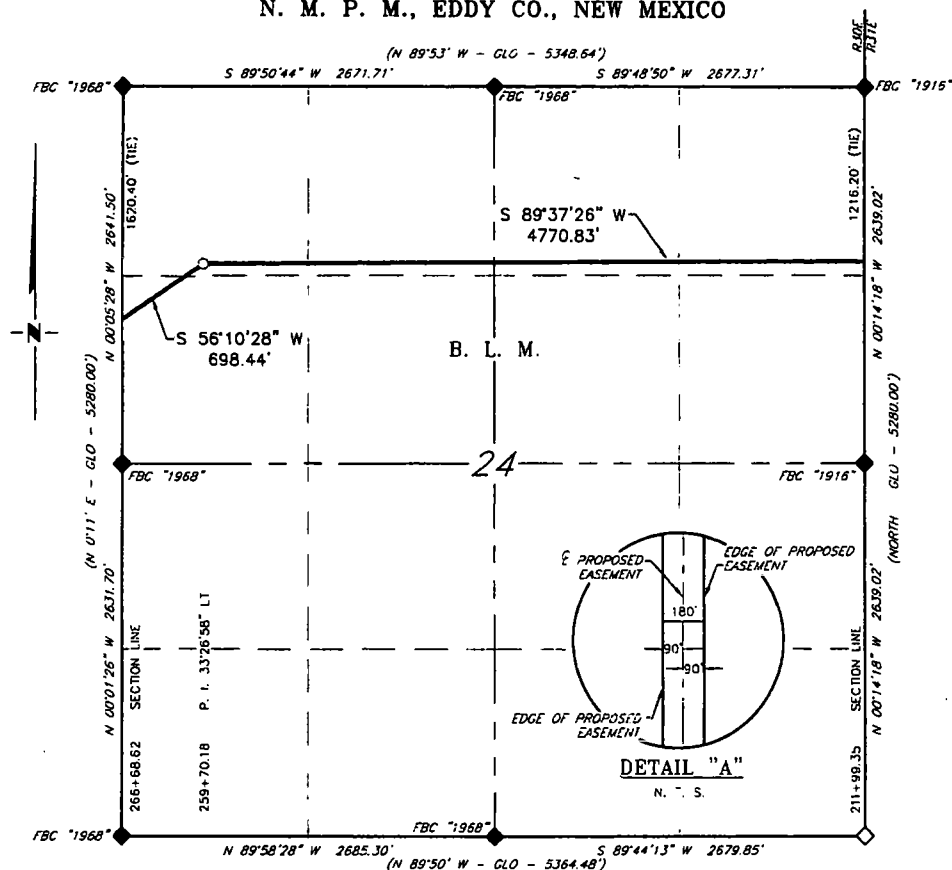
NO.	REVISION	DATE
JOB NO.:	LS1707418A	
DWG. NO.:	1707418A-6	

RRC

308 W. BROADWAY ST., HOBBS, NM 88240 (575) 964-8200

SCALE: 1" = 1000'
DATE: 7/19/17
SURVEYED BY: JM/EF
DRAWN BY: LA
APPROVED BY: RMH
SHEET: 6 OF 14

XTO ENERGY, INC.
PROPOSED POKER LAKE ROW 2 PIPELINE
SECTION 24, T24S, R30E,
N. M. P. M., EDDY CO., NEW MEXICO



DESCRIPTION

A strip of land 180 feet wide, being 5,469.27 feet or 331.471 rods in length, lying in Section 24, Township 24 South, Range 30 East, N. M. P. M., Eddy County, New Mexico, being 90 feet left and 90 feet right of the following described survey of a centerline across B. L. M. land:

BEGINNING at Engr. Sta. 211+99.35, a point on the East line of Section 24, which bears, S 00°14'18" E, 1,216.20 feet from a brass cap, stamped "1916", found for the Northeast corner of Section 24;

Thence S 89°37'26" W, 4,770.83 feet, to Engr. Sta. 259+70.18, a P. I. of 33°26'58" left;

Thence S 56°10'28" W, 698.44 feet, to Engr. Sta. 266+68.62, a point on the West line of Section 24, which bears, S 00°05'28" E, 1,620.40 feet from a brass cap, stamped "1968", found for the Northwest corner of Section 24.

Said strip of land contains 22.600 acres, more or less, and is allocated by forties as follows:

NE/4 NE/4	81.134 Rods	5.532 Acres
NW/4 NE/4	81.139 Rods	5.532 Acres
NE/4 NW/4	81.035 Rods	5.525 Acres
NW/4 NW/4	55.389 Rods	3.776 Acres
SW/4 NW/4	32.774 Rods	2.235 Acres

SCALE: 1" = 1000'
0 500' 1000'

BEARINGS ARE GRND NAD 83
NM EAST
DISTANCES ARE HORIZ. GROUND.

LEGEND
() RECORD DATA - GLO
◆ FOUND MONUMENT AS NOTED
— PROPOSED PIPELINE

I, R. M. Howett, a N. M. Professional Surveyor, hereby certify that I prepared this plat from an actual survey made on the ground under my direct supervision, said survey and plat meet the Min. Stds. for Land Surveying in the State of N. M. and are true and correct to the best of my knowledge and belief.

Robert M. Howett
Robert M. Howett NM PS 19680



Copyright 2016 - All Rights Reserved

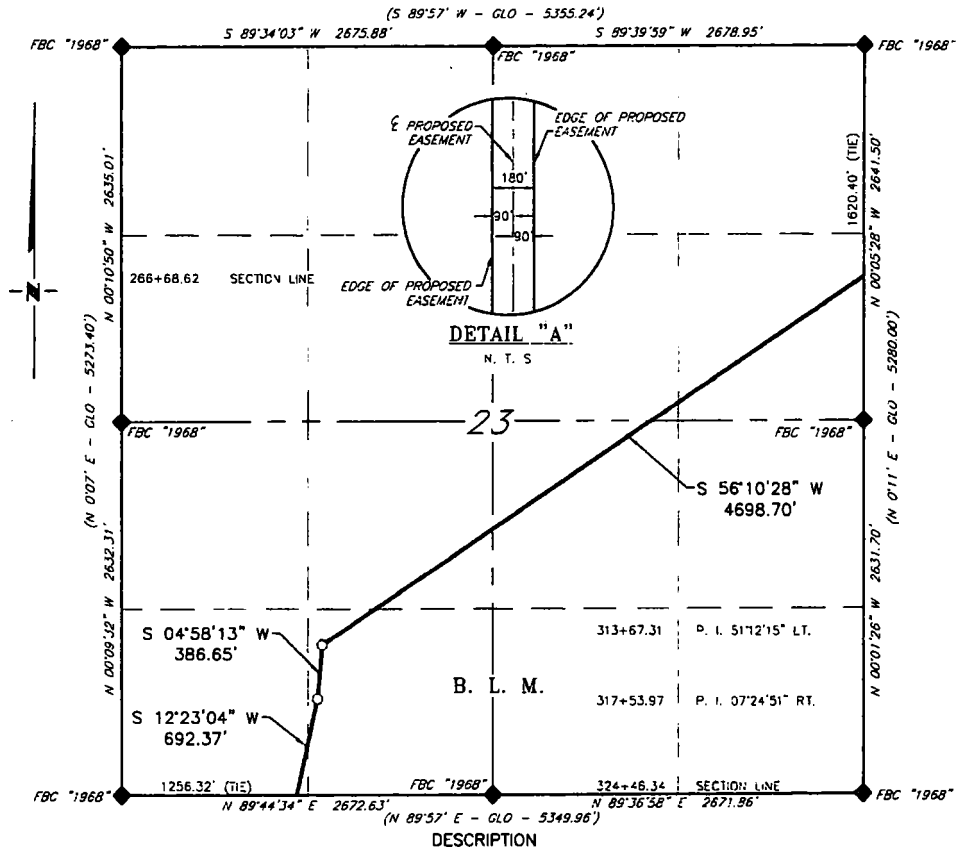
NO.	REVISION	DATE
JOB NO.:	LS1707418A	
DWG. NO.:	1707418A-7	

RRC

308 W. BROADWAY ST., HOBBS, NM 88240 (575) 964-8200

SCALE: 1" = 1000'
DATE: 7/19/17
SURVEYED BY: JM/EF
DRAWN BY: LA
APPROVED BY: RMH
SHEET: 7 OF 14

XTO ENERGY, INC.
PROPOSED POKER LAKE ROW 2 PIPELINE
SECTION 23, T24S, R30E,
N. M. P. M., EDDY CO., NEW MEXICO



A strip of land 180 feet wide, being 5,777.72 feet or 350.165 rods in length, lying in Section 23, Township 24 South, Range 30 East, N. M. P. M., Eddy County, New Mexico, being 90 feet left and 90 feet right of the following described survey of a centerline across B. L. M. land:

BEGINNING at Engr. Sta. 266+68.62, a point on the East line of Section 23, which bears, S 00°05'28" E, 1,620.40 feet from a brass cap, stamped "1968", found for the Northeast corner of Section 23;

Thence S 56°10'28" W, 4,698.70 feet, to Engr. Sta. 313+67.31, a P. I. of 51°12'15" left;

Thence S 04°58'13" W, 386.65 feet, to Engr. Sta. 317+53.97, a P. I. of 07°24'51" right;

Thence S 12°23'04" W, 692.37 feet, to Engr. Sta. 324+46.34, a point on the South line of Section 23, which bears, N 89°44'34" E, 1,256.32 feet from a brass cap, stamped "1968", found for the Southwest corner of Section 23.

Said strip of land contains 23.875 acres, more or less, and is allocated by forties as follows:

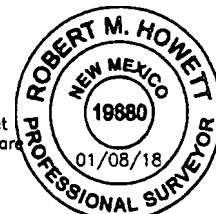
SE/4 NE/4	97.547 Rods	6.651 Acres
SW/4 NE/4	14.541 Rods	0.991 Acres
NW/4 SE/4	82.956 Rods	5.656 Acres
NE/4 SW/4	61.619 Rods	4.201 Acres
SE/4 SW/4	71.158 Rods	4.852 Acres
SW/4 SW/4	22.344 Rods	1.524 Acres

SCALE: 1" = 1000'
0 500' 1000'
BEARINGS ARE GRND MAG. & J
NM EAST
DISTANCES ARE HORIZ. GROUND.

LEGEND
() RECORD DATA - GLO
◆ FOUND MONUMENT AS NOTED
— PROPOSED PIPELINE

I, R. M. Howett, a N. M. Professional Surveyor, hereby certify that I prepared this plat from an actual survey made on the ground under my direct supervision, said survey and plat meet the Min. Stds. for Land Surveying in the State of N. M. and are true and correct to the best of my knowledge and belief.

Robert M. Howett
Robert M. Howett NM PS 19680



Copyright 2016 - All Rights Reserved

NO.	REVISION	DATE
JOB NO.:	LS1707418A	
DWG. NO.:	1707418A-8	

RRC

308 W. BROADWAY ST., HOBBS, NM 88240 (575) 964-8200

SCALE: 1" = 1000'
DATE: 7/19/17
SURVEYED BY: JM/EF
DRAWN BY: LA
APPROVED BY: RMH
SHEET: 8 OF 14

Survey Plat for 26 Acres, B. L. M.

North Arrow pointing towards the top-left corner.

Tract Area: 26 Acres

Boundary Measurements:

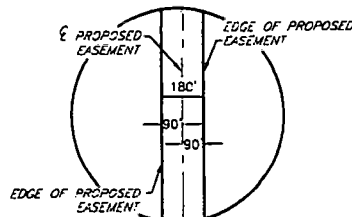
- Top Boundary:
 - Left Segment: N 89°44'34" E 2672.63' (TIE)
 - Right Segment: N 89°36'58" E 2671.85'
- Bottom Boundary:
 - Left Segment: N 89°49'35" E 2675.01'
 - Right Segment: N 89°48'42" E 2672.81'
- Left Boundary:
 - Top Segment: N 00°18'31" W 2635.74'
 - Bottom Segment: N 00°20'35" W 2637.85'
- Right Boundary:
 - Top Segment: N 00°23'54" W 2646.26'
 - Bottom Segment: N 00°24'44" W 2640.37'

Internal Measurements and Section Lines:


- Section Line 1 (Top):
 - Station 324+46.34
 - Section Line P. I. 57°22'30" RT.
 - Station 335+53.68
 - Section Line P. I. 41°53'02" LT.
- Section Line 2 (Bottom):
 - Station 382+89.98
 - Section Line P. I. 16°49'48" RT.
 - Station 385+60.09
 - Section Line P. I. 387+22.64
- Section Line 3 (Left):
 - Station 2244.12 (TIE)
 - Section Line P. I. 29°39'30" E 270.11'
 - Section Line P. I. 12°49'42" E 162.55'

Other Measurements:

- Top-Left Corner: S 12°23'04" W 259.27'
- Top-Left Corner: S 69°45'34" W 848.07'
- Top-Left Corner: S 27°52'32" W 851.31'
- Bottom-Left Corner: S 29°39'30" E 270.11'
- Bottom-Left Corner: S 12°49'42" E 162.55'



SCALE: 1" = 1000'



0 500' 1000'

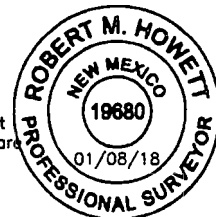
LEGEND

() RECORD DATA - GLO

◆ FOUND MONUMENT
AS NOTED

———— PROPOSED PIPELINE

Robert M. Howett NM PS 19680



Copyright 2016 - All Rights Reserved

NO.	REVISION	DATE
JOB NO.: LS1707418A		
DWG. NO.: 1707418A-9		

RRC

308 W. BROADWAY ST., HOBBS, NM 88240 (575) 964-8200

SCALE: 1" = 1000'
DATE: 7/19/17
SURVEYED BY: JM/EF
DRAWN BY: LA
APPROVED BY: RMH
SHEET: 9 OF 14

XTO ENERGY, INC.
PROPOSED POKER LAKE ROW 2 PIPELINE
SECTION 26, T24S, R30E,
N. M. P. M., EDDY CO., NEW MEXICO

DESCRIPTION

A strip of land 180 feet wide, being 2,391.31 feet or 144.928 rods in length, lying in Section 26, Township 24 South, Range 30 East, N. M. P. M., Eddy County, New Mexico, being 90 feet left and 90 feet right of the following described survey of a centerline across B. L. M. land:

BEGINNING at Engr. Sta. 324+46.34, a point on the North line of Section 26, which bears, S 89°44'34" W, 1,416.31 feet from a brass cap, stamped "1968", found for the North quarter corner of Section 26;

Thence S 12°23'04" W, 259.27 feet, to Engr. Sta. 327+05.61, a P. I. of 57°22'30" right;

Thence S 69°45'34" W, 848.07 feet, to Engr. Sta. 335+53.68, a P. I. of 41°53'02" left;

Thence S 27°52'32" W, 851.31 feet, to Engr. Sta. 344+04.99, a point on the West line of Section 26, which bears, S 00°18'31" E, 1,293.55 feet from a brass cap, stamped "1968", found for the Northwest corner of Section 26.

Thence BEGINNING AGAIN at Engr. Sta. 382+89.98, a point on the West line of Section 26, which bears, S 00°20'35" E, 2,244.12 feet from a brass cap, stamped "1968", found for the West quarter corner of Section 26;

Thence S 29°39'30" E, 270.11 feet, to Engr. Sta. 385+60.09, a P. I. of 16°49'48" right;

Thence S 12°49'42" E, 162.55 feet, to Engr. Sta. 387+22.64, a point on the South line of Section 26, which bears, S 89°49'35" W, 2,507.62 feet from a brass cap, stamped "1968", found for the South quarter corner of Section 26.

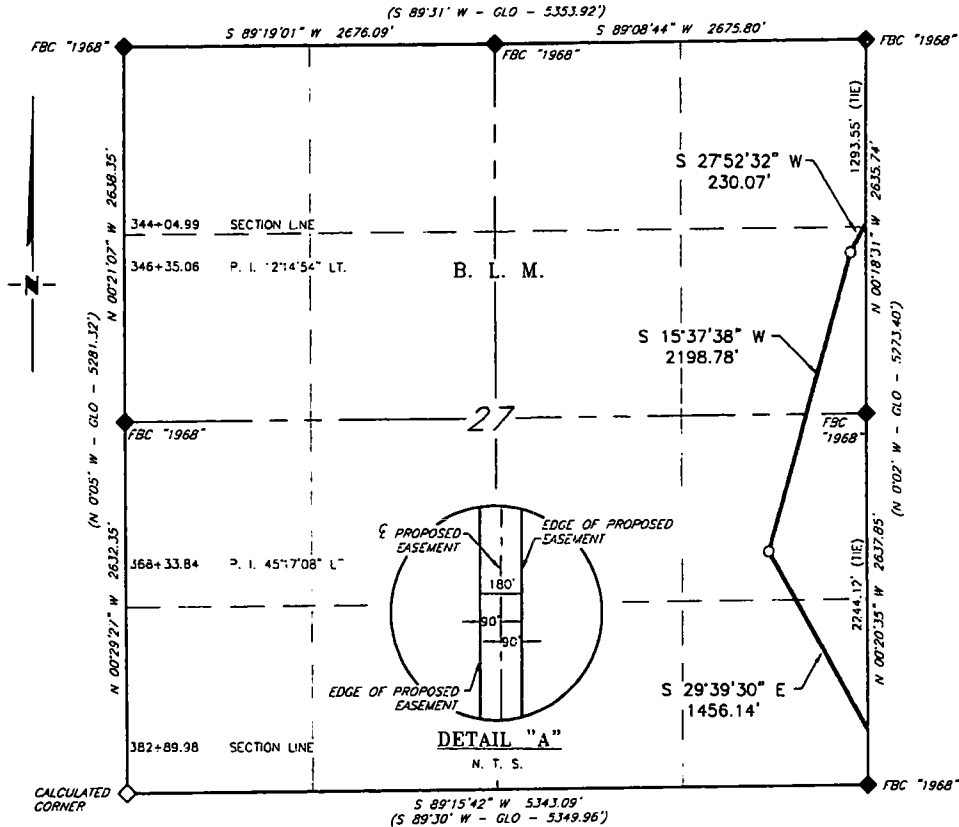
Said strip of land contains 9.881 acres, more or less, and is allocated by forties as follows:

NW/4 NW/4	118.706 Rods	8.094 Acres
SW/4 SW/4	26.222 Rods	1.787 Acres

Copyright 2016 - All Rights Reserved

			SCALE: 1" = 1000'	
			DATE: 7/19/17	
			SURVEYED BY: JM/EF	
			DRAWN BY: LA	
NO. REVISION DATE			APPROVED BY: RMH	
JOB NO.: LS1707418A			SHEET: 10 OF 14	
DWG. NO.: 1707418A-10			308 W. BROADWAY ST., HOBBS, NM 88240 (575) 964-8200	

XTO ENERGY, INC.
PROPOSED POKER LAKE ROW 2 PIPELINE
SECTION 27, T24S, R30E,
N. M. P. M., EDDY CO., NEW MEXICO



DESCRIPTION

A strip of land 180 feet wide, being 3,884.99 feet or 235.454 rods in length, lying in Section 27, Township 24 South, Range 30 East, N. M. P. M., Eddy County, New Mexico, being 90 feet left and 90 feet right of the following described survey of a centerline across B. L. M. land:

BEGINNING at Engr. Sta. 344+04.99, a point on the East line of Section 27, which bears, S 00°18'31" E 1,293.55 feet from a brass cap, stamped "1968", found for the Northeast corner of Section 27;

Thence S 27°52'32" W, 230.07 feet, to Engr. Sta. 346+35.06, a P. I. of 12°14'54" left;

Thence S 15°37'38" W, 2,198.78 feet, to Engr. Sta. 368+33.84, a P. I. of 45°17'08" left;

Thence S 29°39'30" E, 1,456.14 feet, to Engr. Sta. 382+89.98, a point on the East line of Section 27, which bears, S 00°20'35" E, 2,244.12 feet from a brass cap, stamped "1968", found for the East quarter corner of Section 27.

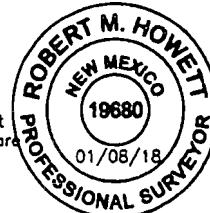
Said strip of land contains 16.054 acres, more or less, and is allocated by forties as follows:

SCALE: 1" = 1000'	NE/4 NE/4	1.681 Rods	0.116 Acres
0 500' 1000'	SE/4 NE/4	84.311 Rods	5.748 Acres
BEARINGS ARE GRND MAG 83	NE/4 SE/4	85.421 Rods	5.824 Acres
NM EAST	SE/4 SE/4	64.041 Rods	4.366 Acres
DISTANCES ARE HORIZ. GROUND.			

LEGEND
 () RECORD DATA - GLO
 ♦ FOUND MONUMENT AS NOTED
 — PROPOSED PIPELINE

I, R. M. Howett, a N. M. Professional Surveyor, hereby certify that I prepared this plat from an actual survey made on the ground under my direct supervision, said survey and plat meet the Min. Stds. for Land Surveying in the State of N. M. and are true and correct to the best of my knowledge and belief.

Robert M. Howett
 Robert M. Howett NM PS 19680



Firm No.: TX 10193838 NM 4655451

Copyright 2016 - All Rights Reserved

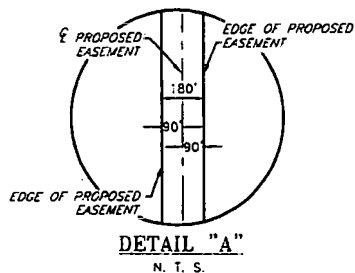
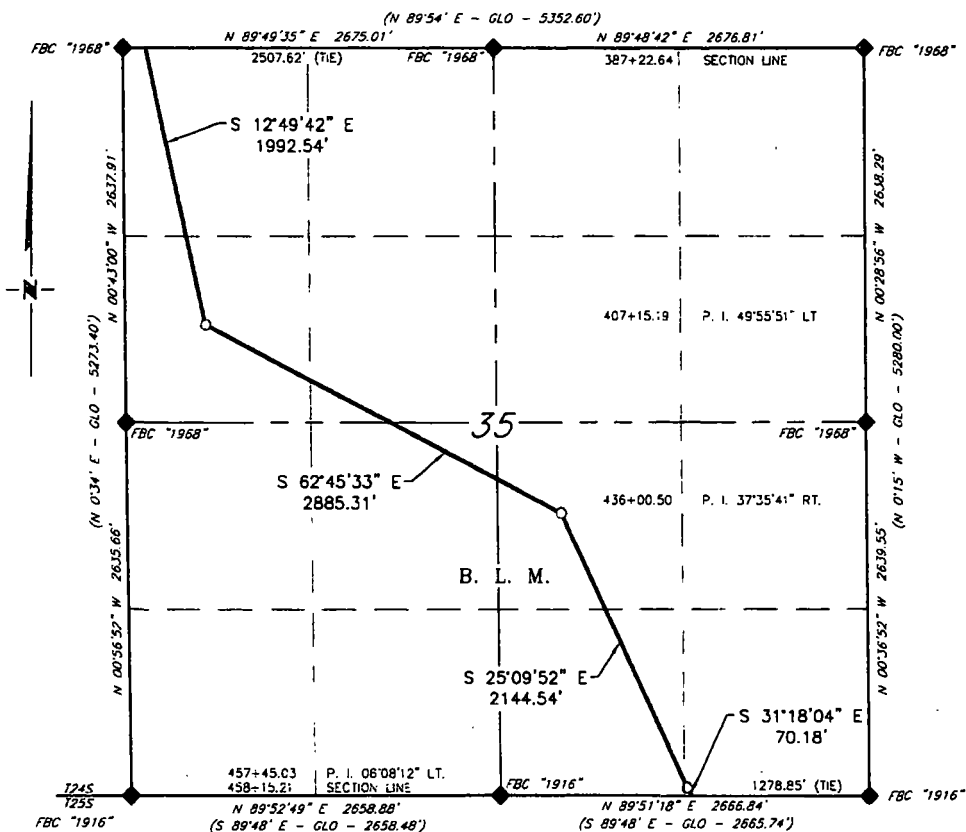
NO.	REVISION	DATE
JOB NO.:	LS1707418A	
DWG. NO.:	1707418A-1	

RRC

308 W. BROADWAY ST., MOBB8S, NM 88240 (575) 964-8200

SCALE: 1" = 1000'
DATE: 7/19/17
SURVEYED BY: JM/EF
DRAWN BY: LA
APPROVED BY: RMH
SHEET: 11 OF 14

XTO ENERGY, INC.
PROPOSED POKER LAKE ROW 2 PIPELINE
SECTION 35, T24S, R30E,
N. M. P. M., EDDY CO., NEW MEXICO



SCALE: 1" = 1000'
0 500' 1000'

BEARINGS ARE GRND MAG 83
NM EAST
DISTANCES ARE HORIZ. GROUND.

LEGEND

- () RECORD DATA - GLO
- ◆ FOUND MONUMENT AS NOTED
- PROPOSED PIPELINE

I, R. M. Howett, a N. M. Professional Surveyor, hereby certify that I prepared this plat from an actual survey made on the ground under my direct supervision, said survey and plat meet the Min. Stds. for Land Surveying in the State of N. M. and are true and correct to the best of my knowledge and belief.

Robert M. Howett
Robert M. Howett NM PS 19680



Firm No.: TX 10193838 NM 4655451

Copyright 2016 - All Rights Reserved

NO.	REVISION	DATE
JOB NO.:	LS1707418A	
DWG. NO.:	1707418A-1	

RRC

308 W. BROADWAY ST., HOBBS, NM 88240 (575) 964-8200

SCALE:	1" = 1000'
DATE:	7/19/17
SURVEYED BY:	JM/EF
DRAWN BY:	LA
APPROVED BY:	RMH
SHEET:	12 OF 14

XTO ENERGY, INC.
PROPOSED POKER LAKE ROW 2 PIPELINE
SECTION 35, T24S, R30E,
N. M. P. M., EDDY CO., NEW MEXICO

DESCRIPTION

A strip of land 180 feet wide, being 7,092.57 feet or 429.853 rods in length, lying in Section 35, Township 24 South, Range 30 East, N. M. P. M., Eddy County, New Mexico, being 90 feet left and 90 feet right of the following described survey of a centerline across B. L. M. land:

BEGINNING at Engr. Sta. 387+22.64, a point on the North line of Section 35, which bears, S 89°49'35" W 2,507.62 feet from a brass cap, stamped "1968", found for the North quarter corner of Section 35;

Thence S 12°49'42" E, 1,992.54 feet, to Engr. Sta. 407+15.19, a P. I. of 49°55'51" left;

Thence S 62°45'33" E, 2,885.31 feet, to Engr. Sta. 436+00.50, a P. I. of 37°35'41" right;

Thence S 25°09'52" E, 2,144.54 feet, to Engr. Sta. 457+45.03, a P. I. of 06°08'12" left;

Thence S 31°18'04" E, 70.18 feet, to Engr. Sta. 458+15.21, a point on the South line of Section 35, which bears, S 89°51'18" W, 1,278.85 feet from a brass cap, stamped "1916", found for the Southeast corner of Section 35.

Said strip of land contains 29.308 acres, more or less, and is allocated by forties as follows:

NW/4 NW/4	81.922 Rods	5.586 Acres
SW/4 NW/4	90.350 Rods	6.160 Acres
SE/4 NW/4	39.784 Rods	2.712 Acres
NE/4 SW/4	51.848 Rods	3.535 Acres
NW/4 SE/4	77.480 Rods	5.283 Acres
SW/4 SE/4	81.469 Rods	5.555 Acres
SE/4 SE/4	7.000 Rods	0.477 Acres

Copyright 2016 - All Rights Reserved

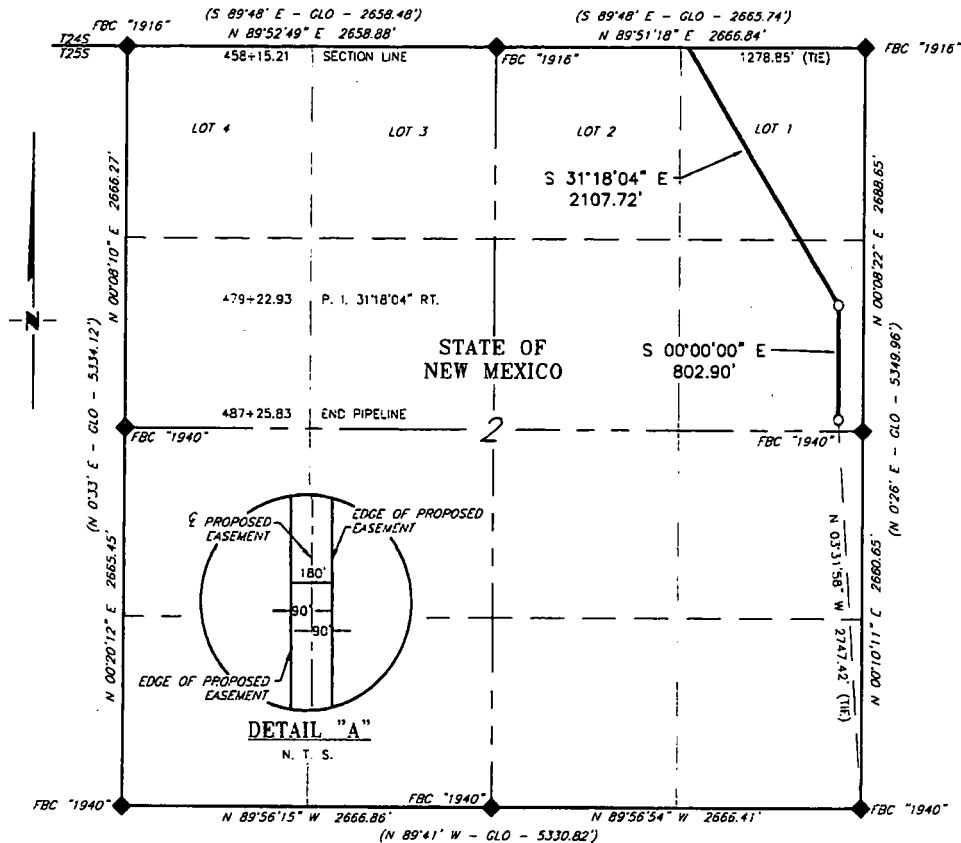
NO.	REVISION	DATE
JOB NO.:	LS1707418A	
DWG. NO.:	1707418A-1	

RRC

308 W. BROADWAY ST., HOBBS, NM 88240 (575) 964-8200

SCALE: 1" = 1000'
DATE: 7/19/17
SURVEYED BY: JM/EF
DRAWN BY: LA
APPROVED BY: RMH
SHEET: 13 OF 14

XTO ENERGY, INC.
PROPOSED POKER LAKE ROW 2 PIPELINE
SECTION 2, T25S, R30E,
N. M. P. M., EDDY CO., NEW MEXICO



DESCRIPTION

A strip of land 180 feet wide, being 2,910.62 feet or 176.401 rods in length, lying in Section 2, Township 25 South, Range 30 East, N. M. P. M., Eddy County, New Mexico, being 90 feet left and 90 feet right of the following described survey of a centerline across State of New Mexico land:

BEGINNING at Engr. Sta. 458+15.21 a point on the North line of Section 2, which bears, S 89°51'18" W 1,278.85 feet from a brass cap, stamped "1916", found for the Northeast corner of Section 2;

Thence S 31°18'04" E, 2,107.72 feet, to Engr. Sta. 479+22.93, a P. I. of 31°18'04" right;

Thence S 00°00'00" E, 802.90 feet, to Engr. Sta. 487+25.83, the End of Survey, a point in the Northeast quarter of Section 2, which bears, N 03°31'58" W, 2,747.42 feet from a brass cap, stamped "1940", found for the Southeast corner of Section 2.

Said strip of land contains 12.027 acres, more or less, and is allocated by forties as follows:

Lot 1	95.134 Rods	6.486 Acres
SE/4 NE/4	81.267 Rods	5.541 Acres

SCALE: 1" = 1000'
0 500' 1000'

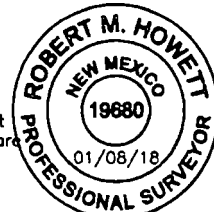
BEARINGS ARE GRID NAD 83
NM EAST
DISTANCES ARE HORIZ. GROUND.

LEGEND

() RECORD DATA - GLO
◆ FOUND MONUMENT AS NOTED
— PROPOSED PIPELINE

I, R. M. Howett, a N. M. Professional Surveyor, hereby certify that I prepared this plat from an actual survey made on the ground under my direct supervision, said survey and plat meet the Min. Stds. for Land Surveying in the State of N. M. and are true and correct to the best of my knowledge and belief.

Robert M. Howett
Robert M. Howett NM PS 19680



Copyright 2016 - All Rights Reserved

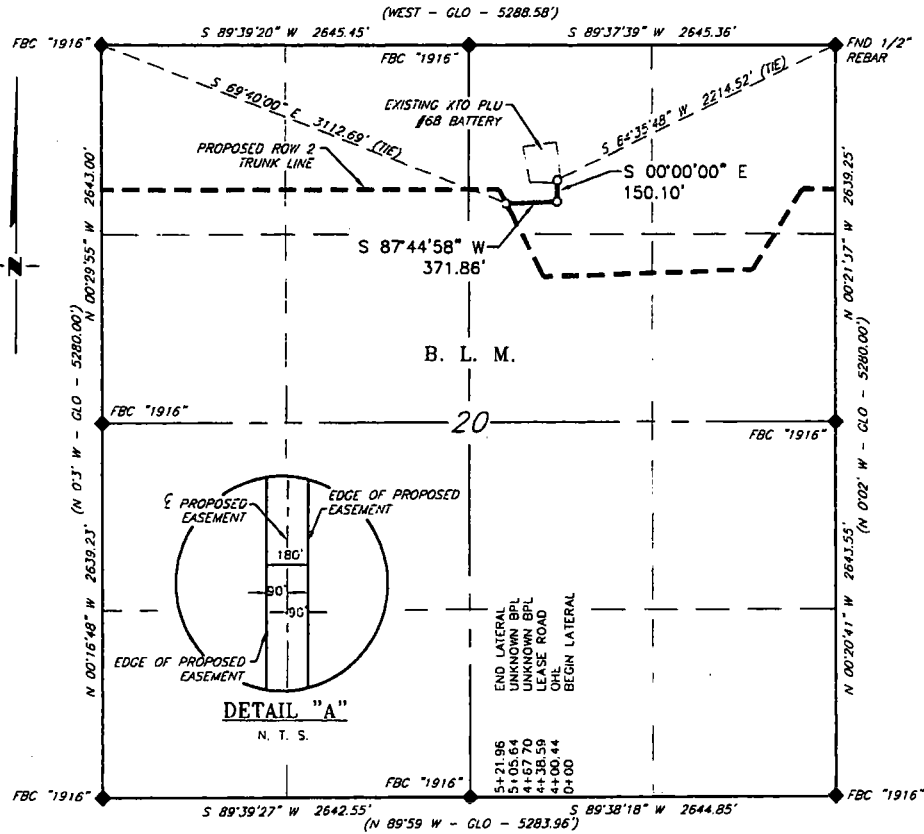
NO.	REVISION	DATE
JOB NO.:	LS1707418A	
DWG. NO.:	1707418A-1	

RRC

308 W. BROADWAY ST., HOBBS, NM 88240 (575) 964-8200

SCALE: 1" = 1000'
DATE: 7/19/17
SURVEYED BY: JM/EF
DRAWN BY: LA
APPROVED BY: RMH
SHEET: 14 OF 14

XTO ENERGY, INC.
PROPOSED RE-ROUTE OF A LATERAL FROM THE PLU #68
TO THE ROW 2 MAINLINE
SECTION 20, T24S, R31E,
N. M. P. M., EDDY CO., NEW MEXICO



DESCRIPTION

A strip of land 180 feet wide, being 521.96 feet or 31.634 rods in length, lying in Section 20, Township 24 South, Range 31 East, N. M. P. M., Eddy County, New Mexico, being 90 feet left and 90 feet right of the following described survey of a centerline across B. L. M. land:

BEGINNING at Engr. Sta. 0+00, a point in the Northeast quarter of Section 20, which bears, S 64°35'48\" W, 2,214.52 feet from a 1/2\" rebar, found for the Northeast corner of Section 20;

Thence S 00°00'00\" E, 150.10 feet to Engr. Sta. 1+50.10, a P. I. of 87°44'58\" right;

Thence S 87°44'58\" W, 371.86 feet to Engr. Sta. 5+21.96, the End of Survey, a point in the Northeast quarter of Section 20, which bears, S 69°40'00\" E, 3,112.69 feet from a brass cap, stamped \"1916\", found for the Northwest corner of Section 20.

Said strip of land contains 2.157 acres, more or less, and is allocated by forties as follows:

NW 1/4 NE 1/4 31.634 Rods 2.157 Acres

SCALE: 1\" = 1000'
 0 500' 1000'
 BEARINGS ARE GRID NAD 83
 NM EAST
 DISTANCES ARE HORIZ. GROUND.

LEGEND
 () RECORD DATA - GLO
 ♦ FOUND MONUMENT AS NOTED
 — PROPOSED LATERAL

I, R. M. Howett, a N. M. Professional Surveyor, hereby certify that I prepared this plat from an actual survey made on the ground under my direct supervision, said survey and plat meet the Min. Stds. for Land Surveying in the State of N. M. and are true and correct to the best of my knowledge and belief.

Robert M. Howett
 Robert M. Howett NM PS 19680



Copyright 2016 - All Rights Reserved

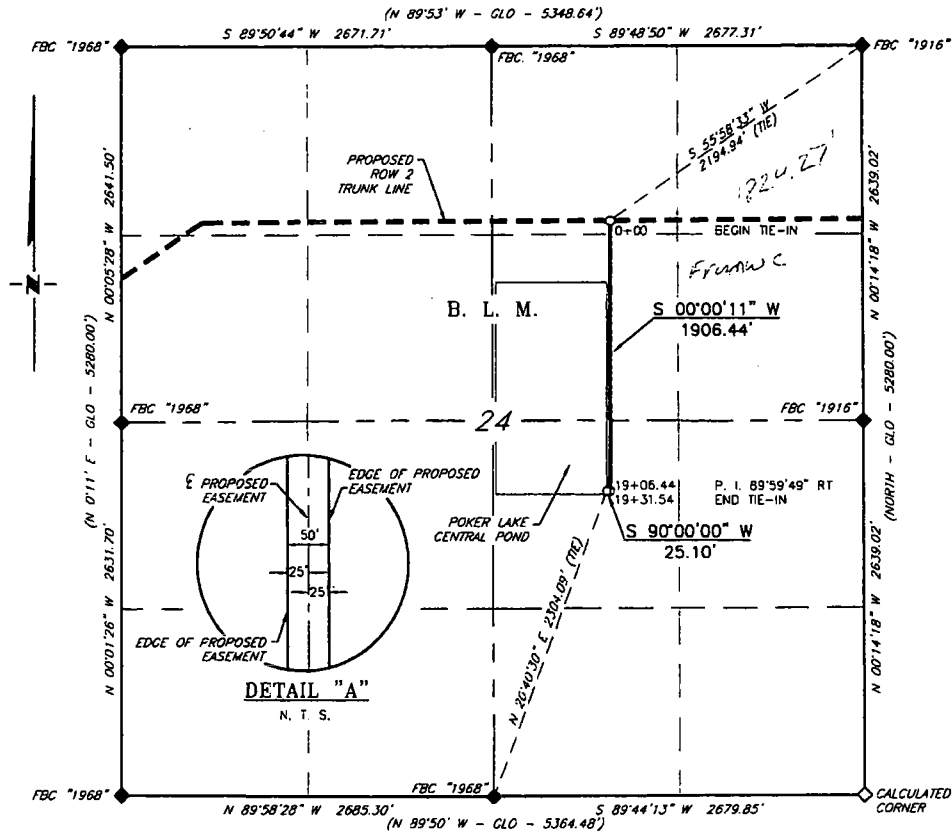
NO.	REVISION	DATE
JOB NO.:	LS1801017	
DWG. NO.:	1-1801017	

RRC

308 W. BROADWAY ST., HOBBS, NM 88240 (575) 964-8200

SCALE: 1\" = 1000'
 DATE: 1/8/2018
 SURVEYED BY: JM/JC
 DRAWN BY: CMJ
 APPROVED BY: RMH
 SHEET: 1 OF 1

XTO ENERGY, INC.
PROPOSED TIE-IN FOR THE POKER LAKE ROW 2 CENTRAL POND
SECTION 24, T24S, R30E,
N. M. P. M., EDDY CO., NEW MEXICO



DESCRIPTION

A strip of land 50 feet wide, being 1,931.54 feet or 117.063 rods in length, lying in Section 24, Township 24 South, Range 30 East, N. M. P. M., Eddy County, New Mexico, being 25 feet left and 25 feet right of the following described survey of a centerline across B. L. M. land:

BEGINNING at Engr. Sta. 0+00, a point in the Northeast quarter of Section 24, which bears, S 55°58'33" W, 2,194.94 feet from a brass cap, stamped "1916", found for the Northeast corner of Section 24;

Thence S 00°00'11" W, 1,906.44 feet, to Engr. Sta. 19+06.44, a P. I. of 89°59'49" right;

Thence S 90°00'00" W, 25.10 feet to Engr. Sta. 19+31.54, the End of Survey, a point in the Southeast quarter of Section 24, which bears, N 20°40'30" E, 2,304.09 feet from a brass cap, stamped "1968", found for the West quarter corner of Section 24.

Said strip of land contains 2.217 acres, more or less, and is allocated by forties as follows:

NW 1/4 NE 1/4	5.906 Rods	0.112 Acres
SW 1/4 NE 1/4	79.981 Rods	1.515 Acres
NW 1/4 SE 1/4	31.176 Rods	0.590 Acres

SCALE: 1" = 1000'
0 500' 1000'

BEARINGS ARE GRID NAD 83
NM EAST
DISTANCES ARE HORIZ. GROUND.

LEGEND

- () RECORD DATA - GLO
- ◆ FOUND MONUMENT AS NOTED
- PROPOSED TIE-IN

I, R. M. Howett, a N. M. Professional Surveyor, hereby certify that I prepared this plat from an actual survey made on the ground under my direct supervision, said survey and plat meet the Min. Stds. for Land Surveying in the State of N. M. and are true and correct to the best of my knowledge and belief.

Robert M. Howett
Robert M. Howett NM PS 19680



Copyright 2016 - All Rights Reserved

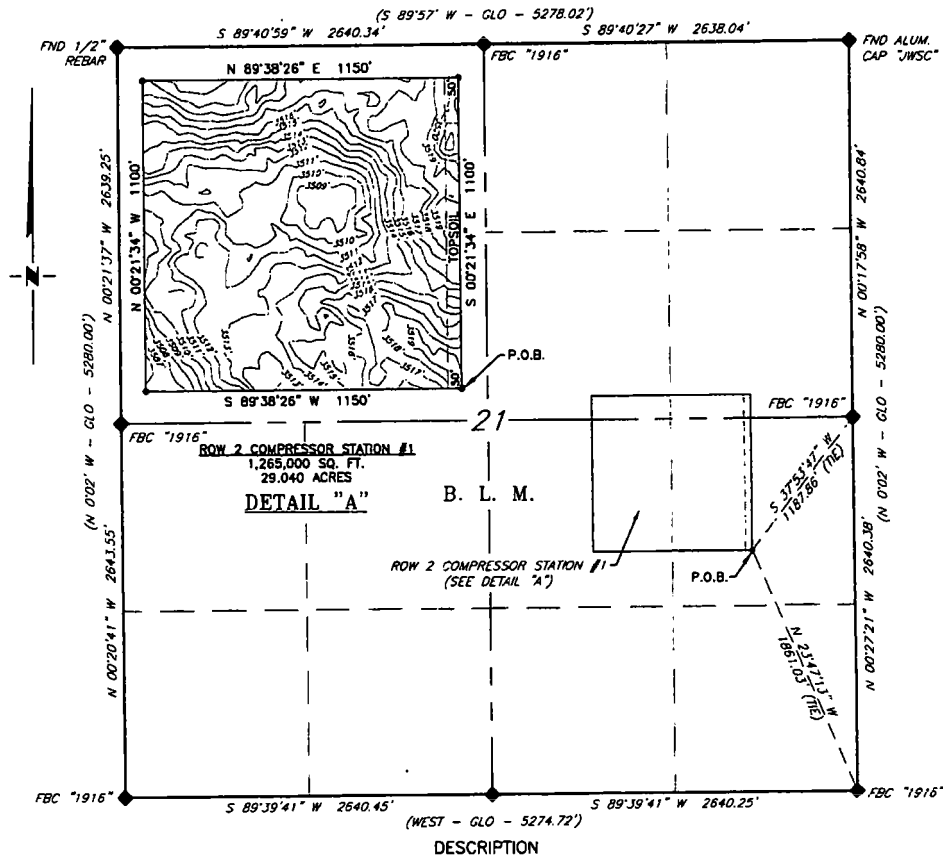
NO.	REVISION	DATE
JOB NO.:	LS1708580	
DWG. NO.:	1708580-1	

RRC

308 W. BROADWAY ST., HOBBS, NM 88240 (575) 964-8200

SCALE: 1" = 1000'
DATE: 9/06/2017
SURVEYED BY: JM/JC
DRAWN BY: LPS
APPROVED BY: RMH
SHEET: 1 OF 1

XTO ENERGY, INC.
PROPOSED POKER LAKE ROW 2 COMPRESSOR STATION #1
SECTION 21, T24S, R31E,
N. M. P. M., EDDY CO., NEW MEXICO



A tract of land situated within the East half of Section 21, Township 24 South, Range 31 East, N. M. P. M., Eddy County, New Mexico, across B. L. M. land and and being more particularly described by metes and bounds as follows:

BEGINNING at a point, which bears N 23°47'13" W, 1,861.03 feet, from a brass cap, stamped "1916", found for the Southeast corner of Section 21 and being S 37°53'47" W, 1,187.86 feet, from a brass cap, stamped "1916", found for the East quarter corner of Section 21;

Thence S 89°38'26" W, 1,150.00 feet to a point;
 Thence N 00°21'34" W, 1,100.00 feet to a point;
 Thence N 89°38'26" E, 1,150.00 feet to a point;
 Thence S 00°21'34" E, 1,100.00 feet, to the Point Of Beginning.

Said tract of land contains 1,265,000 square feet or 29.040 acres, more or less and is allocated by forties as follows:

SE 1/4	NE 1/4	96,791 Sq. Ft.	2.222 Acres
SW 1/4	NE 1/4	94,070 Sq. Ft.	2.159 Acres
NW 1/4	SE 1/4	530,771 Sq. Ft.	12.185 Acres
NE 1/4	SE 1/4	543,368 Sq. Ft.	12.474 Acres

SCALE: 1" = 1000'
 0 500' 1000'

BEARINGS ARE GRID MAG. BY
 NM EAST
 DISTANCES ARE HORIZ. GROUND.

LEGEND
 () RECORD DATA - GLO
 ♦ FOUND MONUMENT AS NOTED
 P.O.B. POINT OF BEGINNING

I, R. M. Howett, a N. M. Professional Surveyor, hereby certify that I prepared this plat from an actual survey made on the ground under my direct supervision, said survey and plat meet the Min. Stds. for Land Surveying in the State of N. M. and are true and correct to the best of my knowledge and belief.

Robert M. Howett
 Robert M. Howett NM PS 19680



Copyright 2016 - All Rights Reserved

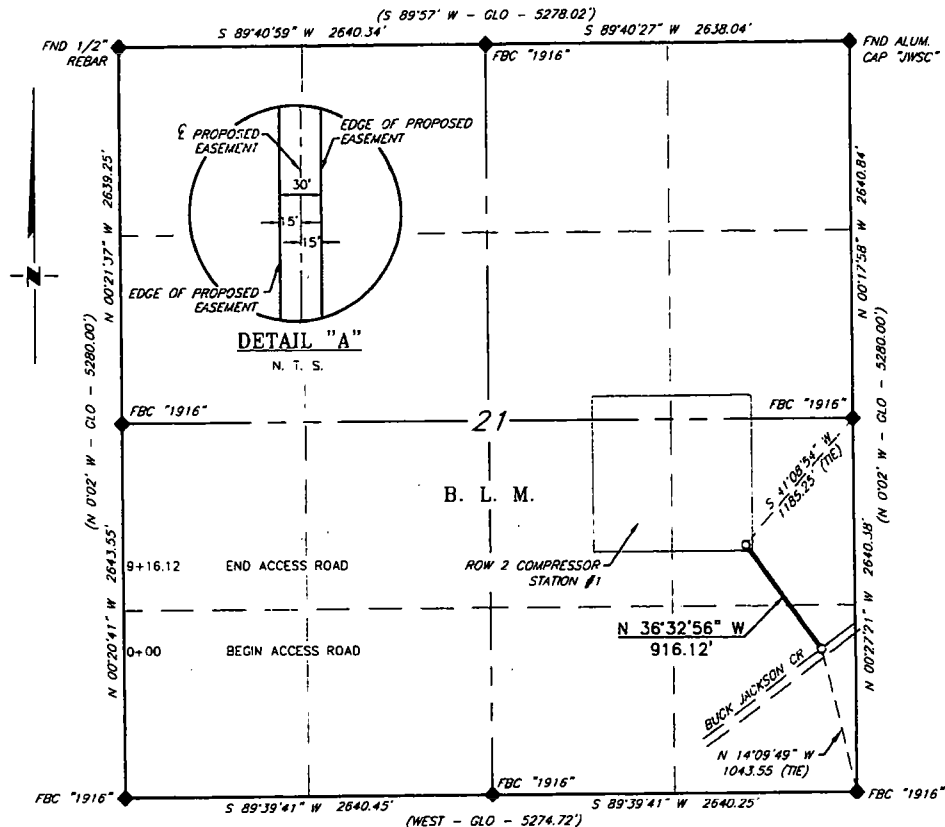
NO.	REVISION	DATE
JOB NO.:	LS1708487	
DWG. NO.:	1708487-1	

RRC

308 W. BROADWAY ST., HOBBS, NM 88240 (575) 964-8200

SCALE: 1" = 1000'
DATE: 8/08/2017
SURVEYED BY: JM/AS
DRAWN BY: LPS
APPROVED BY: RMH
SHEET: 1 OF 1

XTO ENERGY, INC.
PROPOSED ACCESS ROAD TO THE POKER LAKE ROW 2
COMPRESSOR STATION #1
SECTION 21, T24S, R31E,
N. M. P. M., EDDY CO., NEW MEXICO



DESCRIPTION

A strip of land 30 feet wide, being 916.12 feet or 55.522 rods in length, lying in Section 21, Township 24 South, Range 31 East, N. M. P. M., Eddy County, New Mexico, being 15 feet left and 15 feet right of the following described survey of a centerline across B. L. M. land:

BEGINNING at Engr. Sta. 0+00, a point in the Southeast quarter of Section 21, which bears, N 14°09'49" W, 1,043.55 feet from a brass cap, stamped "1916", found for the Southeast corner of Section 21;

Thence N 36°32'56" W, 916.12 feet to Engr. Sta. 9+16.12, the End of Survey, a point in the Southeast quarter of Section 21, which bears, S 41°08'54" W, 1,185.25 feet from a brass cap, stamped "1916", found for the East quarter corner of Section 21.

Said strip of land contains 0.631 acres, more or less, and is allocated by forties as follows:

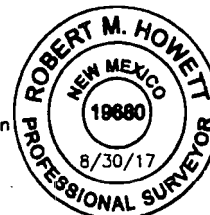
SE 1/4 SE 1/4	23.060 Rods	0.262 Acres
NE 1/4 SE 1/4	32.462 Rods	0.369 Acres

SCALE: 1" = 1000'
0 500' 1000'
BEARINGS ARE GRID NAD 83
NM EAST
DISTANCES ARE HORIZ. GROUND.

LEGEND
() RECORD DATA - GLO
◆ FOUND MONUMENT AS NOTED
— ACCESS ROAD

I, R. M. Howett, a N. M. Professional Surveyor, hereby certify that I prepared this plat from an actual survey made on the ground under my direct supervision, said survey and plat meet the Min. Stds. for Land Surveying in the State of N. M. and are true and correct to the best of my knowledge and belief.

Robert M. Howett
Robert M. Howett NM PS 19680



Copyright 2016 - All Rights Reserved

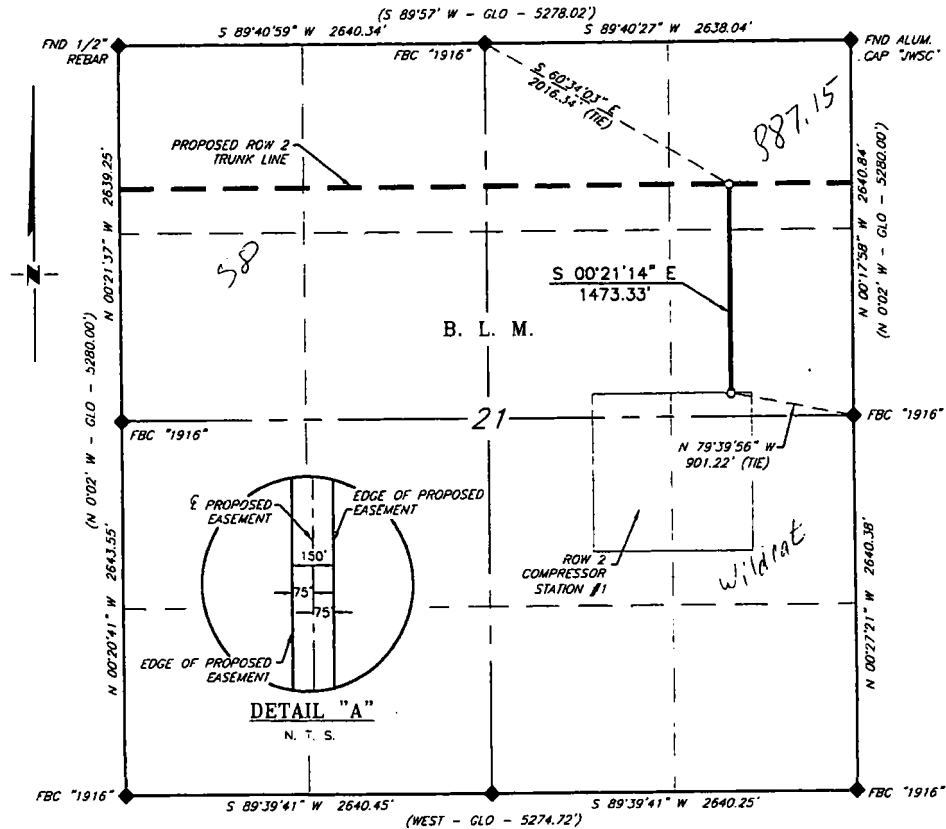
NO.	REVISION	DATE
JOB NO.:	LS1708538	
DWG. NO.:	1708538-1	

RRC

308 W. BROADWAY ST., HOBBS, NM 88240 (575) 964-8200

SCALE: 1" = 1000'
DATE: 8/21/2017
SURVEYED BY: JM/AS
DRAWN BY: LPS
APPROVED BY: RMH
SHEET: 1 OF 1

XTO ENERGY, INC.
PROPOSED LATERAL FOR THE POKER LAKE ROW 2
COMPRESSOR STATION #1
SECTION 21, T24S, R31E,
N. M. P. M., EDDY CO., NEW MEXICO



DESCRIPTION

A strip of land 150 feet wide, being 1,473.33 feet or 89.293 rods in length, lying in Section 21, Township 24 South, Range 31 East, N. M. P. M., Eddy County, New Mexico, being 75 feet left and 75 feet right of the following described survey of a centerline across B. L. M. land:

BEGINNING at Engr. Sta. 0+00, a point in the Northeast quarter of Section 21, which bears, S 60°34'03" E, 2,016.34 feet from a brass cap, stamped "1916", found for the North quarter corner of Section 21;

Thence S 00°21'14" E, 1,473.33 feet, to Engr. Sta. 14+73.33, the End of Survey, a point in the Northeast quarter of Section 21, which bears, N 79°39'56" W, 901.22 feet from a brass cap, stamped "1916", found for the East quarter corner of Section 21.

Said strip of land contains 5.073 acres, more or less, and is allocated by forties as follows:

NE 1/4 NE 1/4	19.360 Rods	1.100 Acres
SE 1/4 NE 1/4	69.933 Rods	3.973 Acres

SCALE: 1" = 1000'
0 500' 1000'
BEARINGS ARE GRID NAD 83
NM EAST
DISTANCES ARE HORIZ. GROUND.
LEGEND
() RECORD DATA - GLO
♦ FOUND MONUMENT
AS NOTED
— PROPOSED LATERAL

I, R. M. Howett, a N. M. Professional Surveyor, hereby certify that I prepared this plat from an actual survey made on the ground under my direct supervision, said survey and plat meet the Min. Stds. for Land Surveying in the State of N. M. and are true and correct to the best of my knowledge and belief.

Robert M. Howett
Robert M. Howett NM PS 19680



Copyright 2016 - All Rights Reserved

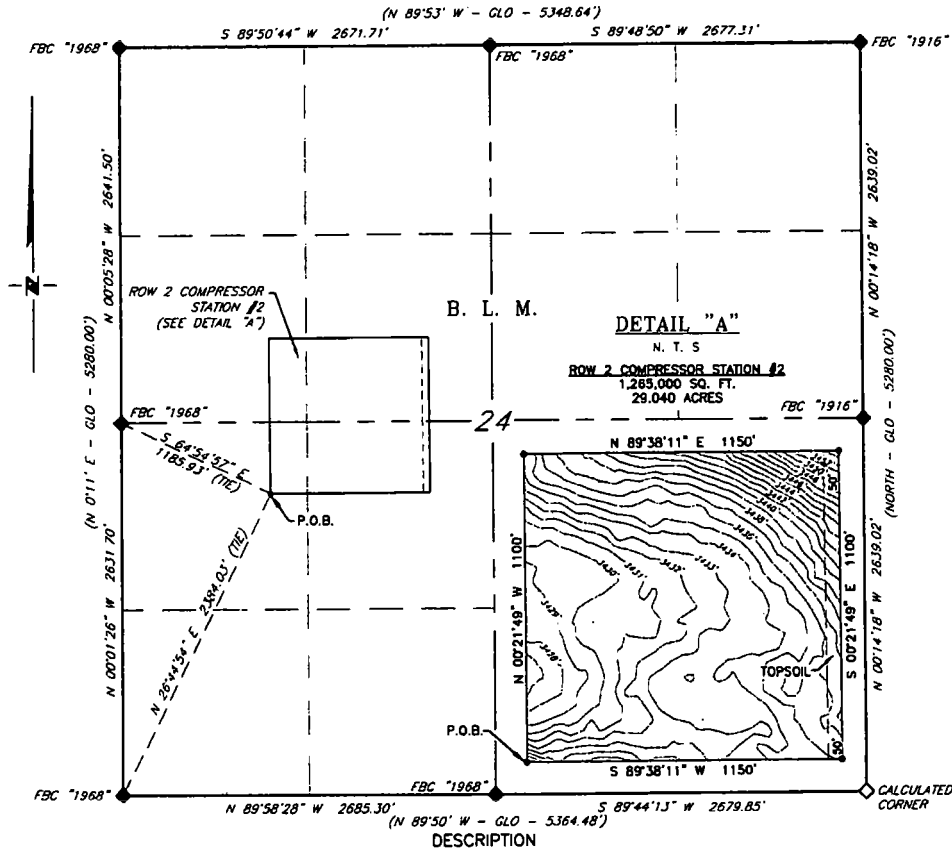
NO.	REVISION	DATE
JOB NO.:	LS1708487	
DWG. NO.:	1708487-2	

RRC

308 W. BROADWAY ST., HOBBS, NM 88240 (575) 964-8200

SCALE: 1" = 1000'
DATE: 8/08/2017
SURVEYED BY: JM/AS
DRAWN BY: LPS
APPROVED BY: RMH
SHEET: 1 OF 1

XTO ENERGY, INC.
PROPOSED POKER LAKE ROW 2 COMPRESSOR STATION #2
SECTION 24, T24S, R30E,
N. M. P. M., EDDY CO., NEW MEXICO



A tract of land situated within the West half of Section 24, Township 24 South, Range 30 East, N. M. P. M., Eddy County, New Mexico, across B. L. M. land and and being more particularly described by metes and bounds as follows:

BEGINNING at a point, which bears N 26°44'54" E, 2,384.03 feet, from a brass cap, stamped "1968", found for the Southwest corner of Section 24 and being S 64°54'57" E, 1,185.93 feet, from a brass cap, stamped "1968", found for the West quarter corner of Section 24;

Thence N 00°21'49" W, 1,100.00 feet to a point;
 Thence N 89°38'11" E, 1,150.00 feet to a point;
 Thence S 00°21'49" E, 1,100.00 feet to a point;
 Thence S 89°38'11" W, 1,150.00 feet, to the Point Of Beginning.

Said tract of land contains 1,265,000 square feet or 29.040 acres, more or less and is allocated by forties as follows:

SW 1/4 NW 1/4	159,602 Sq. Ft.	3.664 Acres
SE 1/4 NW 1/4	524,886 Sq. Ft.	12.050 Acres
SW 1/4 NW 1/4	134,873 Sq. Ft.	3.096 Acres
NE 1/4 SW 1/4	445,639 Sq. Ft.	10.230 Acres

SCALE: 1" = 1000'
 0 500' 1000'
 BEARINGS ARE GRID NAD 83
 NM EAST
 DISTANCES ARE HORIZ. GROUND.

LEGEND
 () RECORD DATA - GLO
 ♦ FOUND MONUMENT AS NOTED
 P.O.B. POINT OF BEGINNING

I, R. M. Howett, a N. M. Professional Surveyor, hereby certify that I prepared this plat from an actual survey made on the ground under my direct supervision, said survey and plat meet the Min. Stds. for Land Surveying in the State of N. M. and are true and correct to the best of my knowledge and belief.

Robert M. Howett
 Robert M. Howett NM PS 19680



Copyright 2016 - All Rights Reserved

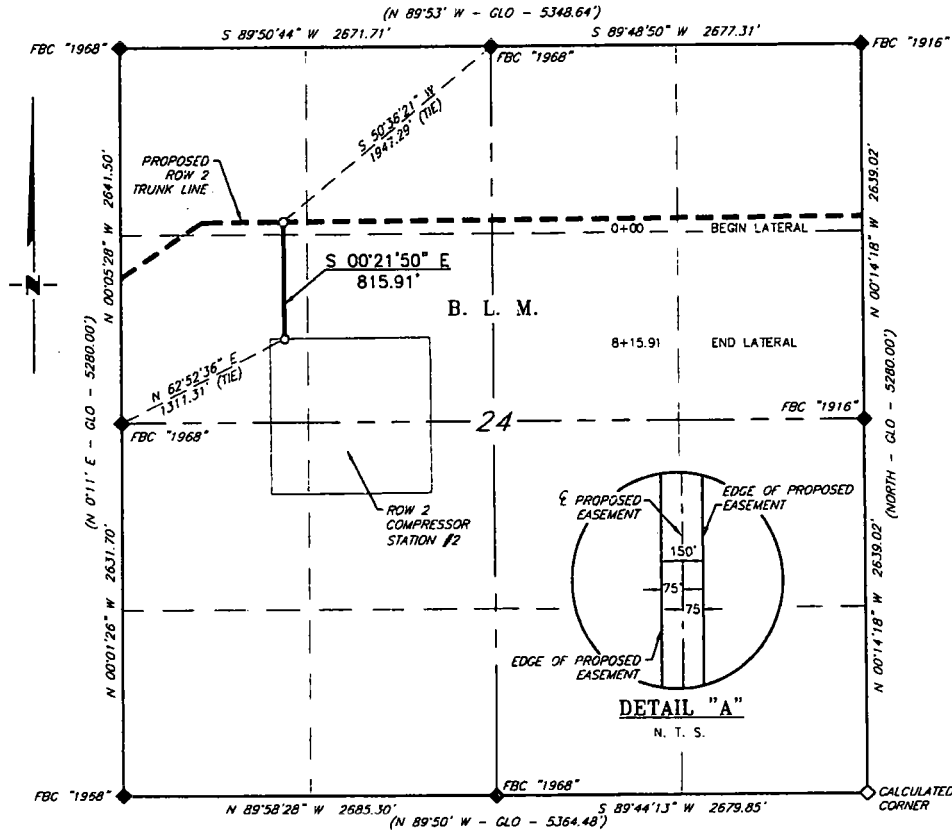
NO.	REVISION	DATE
JOB NO.:	LS1708544	
DWG. NO.:	1708544-1	

RRC

308 W. BROADWAY ST., HOBBS, NM 88240 (575) 964-8200

SCALE: 1" = 1000'
 DATE: 8/22/2017
 SURVEYED BY: EF/JL
 DRAWN BY: LPS
 APPROVED BY: RMH
 SHEET: 1 OF 1

XTO ENERGY, INC.
PROPOSED LATERAL FOR THE POKER LAKE ROW 2
COMPRESSOR STATION #2
SECTION 24, T24S, R30E,
N. M. P. M., EDDY CO., NEW MEXICO



DESCRIPTION

A strip of land 150 feet wide, being 815.91 feet or 49.449 rods in length, lying in Section 24, Township 24 South, Range 30 East, N. M. P. M., Eddy County, New Mexico, being 75 feet left and 75 feet right of the following described survey of a centerline across B. L. M. land:

BEGINNING at Engr. Sta. 0+00, a point in the Northwest quarter of Section 24, which bears, S 50°38'21\" W, 1,947.29 feet from a brass cap, stamped "1968", found for the North quarter corner of Section 24;

Thence S 00°21'50\" E, 815.91 feet to Engr. Sta. 8+15.91, the End of Survey, a point in the Northwest quarter of Section 24, which bears, N 62°52'36\" E, 1,311.31 feet from a brass cap, stamped "1968", found for the West quarter corner of Section 24.

Said strip of land contains 2.810 acres, more or less, and is allocated by forties as follows:

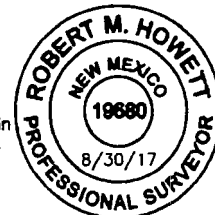
NW 1/4 NW 1/4	5.419 Rods	0.308 Acres
SW 1/4 NW 1/4	44.030 Rods	2.502 Acres

SCALE: 1" = 1000'
 0 500' 1000'
 BEARINGS ARE GRID NAD 83
 NM EAST
 DISTANCES ARE HORIZ. GROUND.

LEGEND
 () RECORD DATA - GLO
 FOUND MONUMENT
 AS NOTED
 PROPOSED LATERAL

I, R. M. Howett, a N. M. Professional Surveyor, hereby certify that I prepared this plat from an actual survey made on the ground under my direct supervision, said survey and plat meet the Min. Stds. for Land Surveying in the State of N. M. and are true and correct to the best of my knowledge and belief.

Robert M. Howett
 Robert M. Howett NM PS 19680



Copyright 2016 - All Rights Reserved

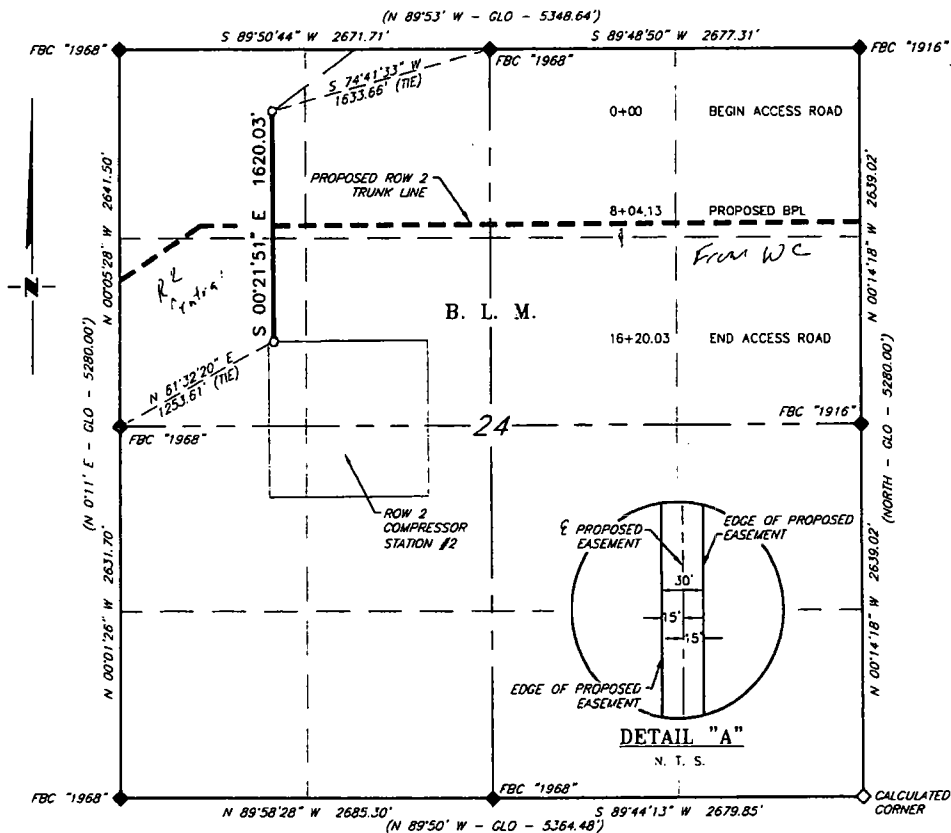
NO.	REVISION	DATE
JOB NO.:	LS1708539	
DWG. NO.:	1708539-2	

RRC

308 W. BROADWAY ST., HOBBS, NM 88240 (575) 964-8200

SCALE: 1" = 1000'
DATE: 8/21/2017
SURVEYED BY: JM/AS
DRAWN BY: LPS
APPROVED BY: RMH
SHEET: 1 OF 1

XTO ENERGY, INC.
PROPOSED ACCESS ROAD TO THE POKER LAKE ROW 2
COMPRESSOR STATION #2
SECTION 24, T24S, R30E,
N. M. P. M., EDDY CO., NEW MEXICO



DESCRIPTION

A strip of land 30 feet wide, being 1,620.03 feet or 98.184 rods in length, lying in Section 24, Township 24 South, Range 30 East, N. M. P. M., Eddy County, New Mexico, being 15 feet left and 15 feet right of the following described survey of a centerline across B. L. M. land:

BEGINNING at Engr. Sta. 0+00, a point in the Northwest quarter of Section 24, which bears, S 74°41'33" W, 1,633.66 feet from a brass cap, stamped "1968", found for the North quarter corner of Section 24;

Thence S 00°21'51" E, 1,620.03 feet to Engr. Sta. 16+20.03, the End of Survey, a point in the Northwest quarter of Section 24, which bears, N 61°32'20" E, 1,253.61 feet from a brass cap, stamped "1968", found for the West quarter corner of Section 24.

Said strip of land contains 1.116 acres, more or less, and is allocated by forties as follows:

NW 1/4 NW 1/4	54.141 Rods	0.615 Acres
SW 1/4 NW 1/4	44.043 Rods	0.501 Acres

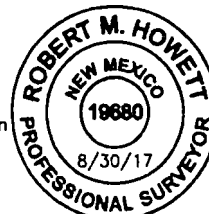
SCALE: 1" = 1000'
 0 500' 1000'

BEARINGS ARE GRID NAD 83
 NM EAST
 DISTANCES ARE HORIZ. GROUND.

LEGEND
 () RECORD DATA - GLO
 ♦ FOUND MONUMENT AS NOTED
 — ACCESS ROAD

I, R. M. Howett, a N. M. Professional Surveyor, hereby certify that I prepared this plat from an actual survey made on the ground under my direct supervision, said survey and plat meet the Min. Stds. for Land Surveying in the State of N. M. and are true and correct to the best of my knowledge and belief.

Robert M. Howett
 Robert M. Howett NM PS 19680



Copyright 2016 - All Rights Reserved

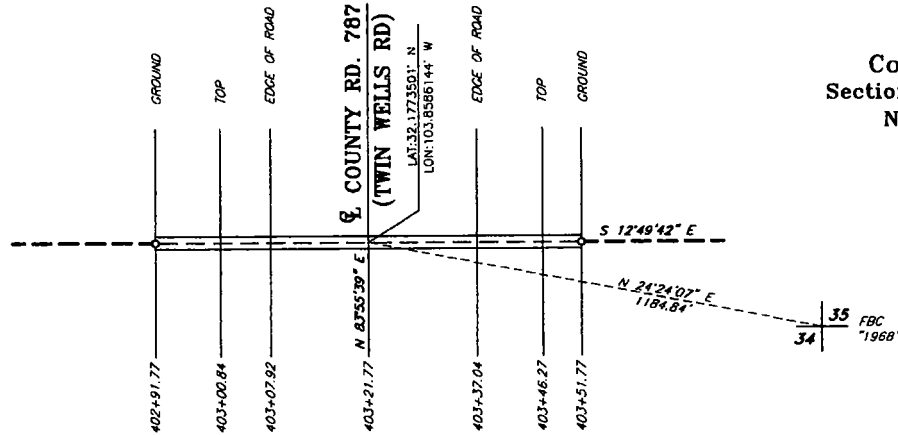
NO.	REVISION	DATE

RRC

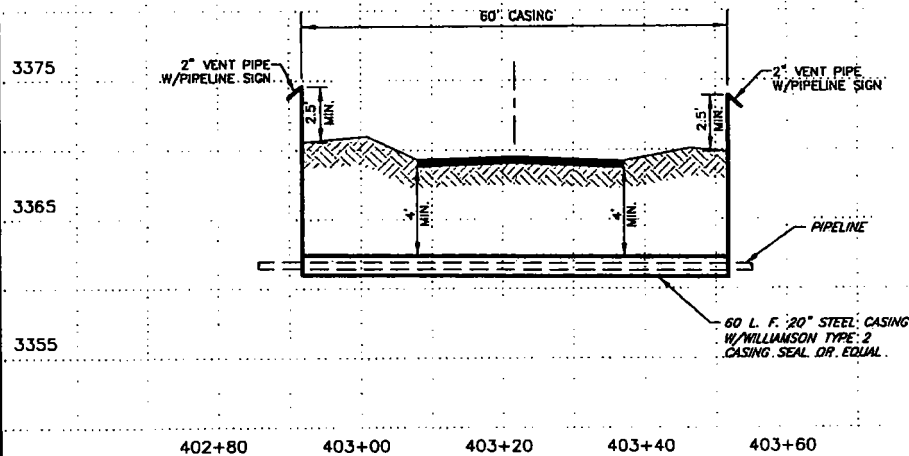
308 W. BROADWAY ST., HOBBS, NM 88240 (575) 964-8200

SCALE: 1" = 1000'
DATE: 8/21/2017
SURVEYED BY: JM/AS
DRAWN BY: LPS
APPROVED BY: RMH
SHEET: 1 OF 1

XTO ENERGY, INC.
Proposed Pipeline Crossing
County Road 787 (Twin Wells Rd.)
Section 35, Township 24 South, Range 30 East,
N. M. P. M., Eddy County, New Mexico



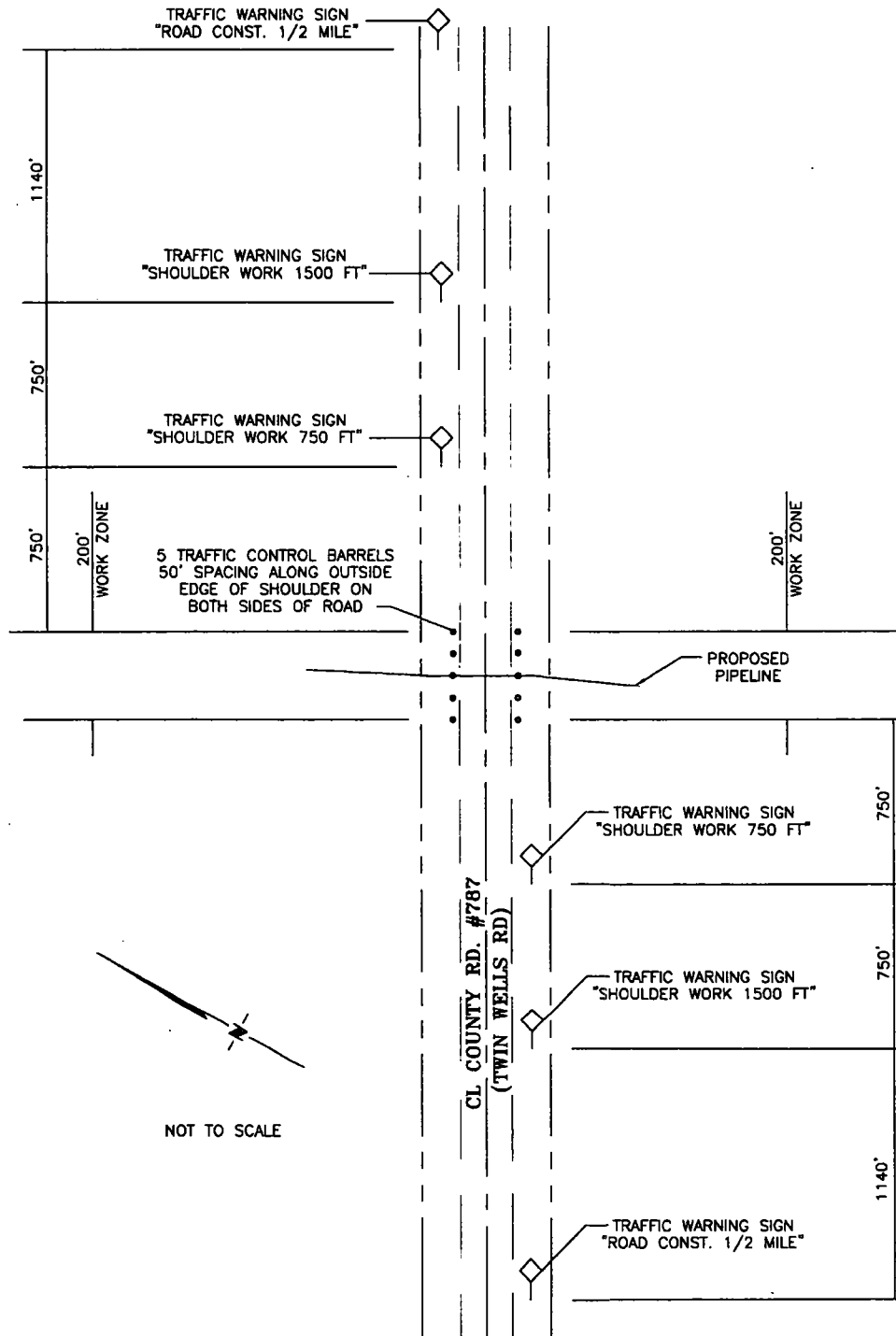
BEARINGS ARE NAD 83 NM EAST ZONE
 DISTANCES ARE GROUND
 SCALE: 1" = 20' HORIZ. / 1" = 10' VERT.



Copyright 2016 - All Rights Reserved

<div style="text-align: center;">  </div>				SCALE: N. T. S.
				DATE: 9-06-2017
				SURVEYED BY: JM/JC
				DRAWN BY: LPS
308 W. BROADWAY ST., HOBBS, NM 88240 (575) 984-8200				APPROVED BY: RMH
				SHEET: 1 OF 2
NO.	REVISION	DATE	JOB NO.: LS1708581	
			DWG. NO.: 1708581RP	

XTO ENERGY, INC.
Proposed Pipeline Crossing
County Road 787 (Twin Wells Rd.)
Section 35, Township 24 South, Range 30 East,
N. M. P. M., Eddy County, New Mexico



Copyright 2016 - All Rights Reserved

NO.	REVISION	DATE
JOB NO.:	LS1708581	
DWG. NO.:	1708581TP	

RRC

308 W. BROADWAY ST., HOBBS, NM 88240 (575) 984-8200

SCALE:	N. T. S.
DATE:	9-06-2017
SURVEYED BY:	JM/JC
DRAWN BY:	LPS
APPROVED BY:	RMH
SHEET:	2 OF 2