

Intent ☒ XXXX As Drilled ☐

API #

30-005-64316

Operator Name: Mack Energy Corporation P.O. Box 960 Artesia, NM 88210	Property Name: Duncan State Com	Well Number 1H
--	--	-----------------------

Kick Off Point (KOP)

UL	Section	Township	Range	Lot	Feet	From N/S	Feet	From E/W	County
D	36	15S	28E		765	North	355	West	Chaves, NM
Latitude 32.9776168					Longitude -104.0926756				NAD

First Take Point (FTP)

UL	Section	Township	Range	Lot	Feet	From N/S	Feet	From E/W	County
D	36	15S	28E		100	North	355	West	Chaves, NM
Latitude 32.9794441					Longitude -104.0926803				NAD

Last Take Point (LTP)

UL	Section	Township	Range	Lot	Feet	From N/S	Feet	From E/W	County
M	24	15S	28E		1222	South	355	West	Chaves, NM
Latitude 32.9976046					Longitude -104.0927372				NAD

Is this well the defining well for the Horizontal Spacing Unit? ☒ Yes

Is this well an infill well? ☐

**NM OIL CONSERVATION
ARTESIA DISTRICT**

JUL 20 2018

RECEIVED

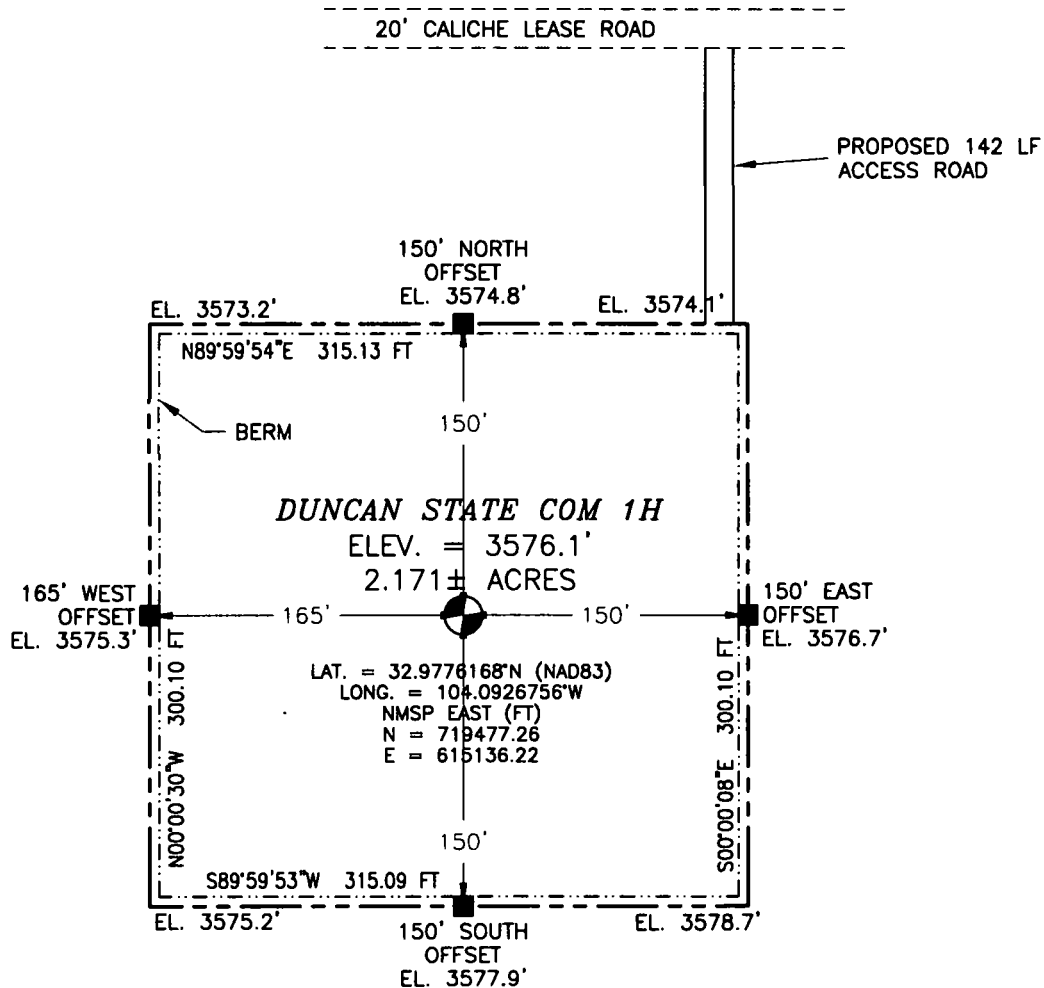
If infill is yes please provide API if available, Operator Name and well number for Defining well for Horizontal Spacing Unit.

API #		
Operator Name:	Property Name:	Well Number

KZ 06/29/2018

SECTION 36, TOWNSHIP 15 SOUTH, RANGE 28 EAST, N.M.P.M.
CHAVES COUNTY, STATE OF NEW MEXICO
SITE MAP

NOTE: LATITUDE AND LONGITUDE COORDINATES ARE SHOWN USING THE NORTH AMERICAN DATUM OF 1983 (NAD83). LISTED NEW MEXICO STATE PLANE EAST COORDINATES ARE GRID (NAD83). BASIS OF BEARING AND DISTANCES USED ARE NEW MEXICO STATE PLANE EAST COORDINATES MODIFIED TO THE SURFACE



010 50 100 200

SCALE 1" = 100'

DIRECTIONS TO LOCATION

FROM INTERSECTION OF STATE HIGHWAY 82 AND CR 209 (TURKEY TRACK) GO NORTH ON CR 209 FOR APPROX. 5.0 MILES TO END OF CR MAINTENANCE, CONTINUE NORTH ON TURKEY TRACK ROAD FOR APPROX. 6.5 MILES, CONTINUE NORTHEAST ON 20' CALICHE LEASE ROAD FOR APPROX. 0.6 OF A MILE, TURN EAST ON 20' CALICHE LEASE ROAD AND GO APPROX. 0.4 OF A MILE TO BEGIN ROAD SURVEY, FOLLOW ROAD SURVEY SOUTH APPROX. 142' TO THE NORTHEAST PAD CORNER FOR THIS LOCATION.

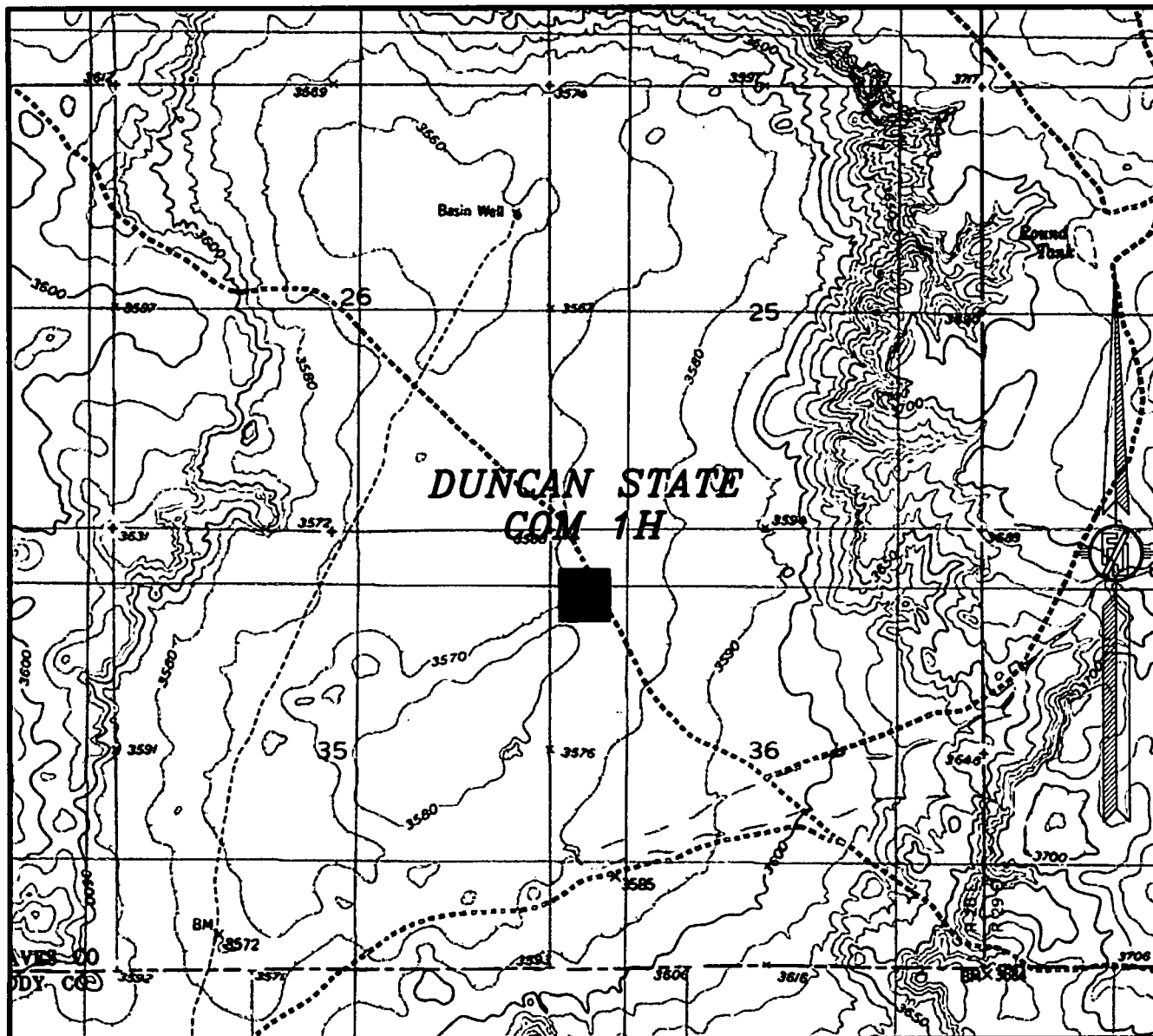
MACK ENERGY CORPORATION
DUNCAN STATE COM 1H
LOCATED 765 FT. FROM THE NORTH LINE
AND 355 FT. FROM THE WEST LINE OF
SECTION 36, TOWNSHIP 15 SOUTH,
RANGE 28 EAST, N.M.P.M.
CHAVES COUNTY, STATE OF NEW MEXICO

JUNE 20, 2018

SURVEY NO. 6318

MADRON SURVEYING, INC. 301 SOUTH CANAL (575) 234-3341 CARLSBAD, NEW MEXICO

SECTION 36, TOWNSHIP 15 SOUTH, RANGE 28 EAST, N.M.P.M.
CHAVES COUNTY, STATE OF NEW MEXICO
LOCATION VERIFICATION MAP



USGS QUAD MAP:
BASIN WELL

NOT TO SCALE

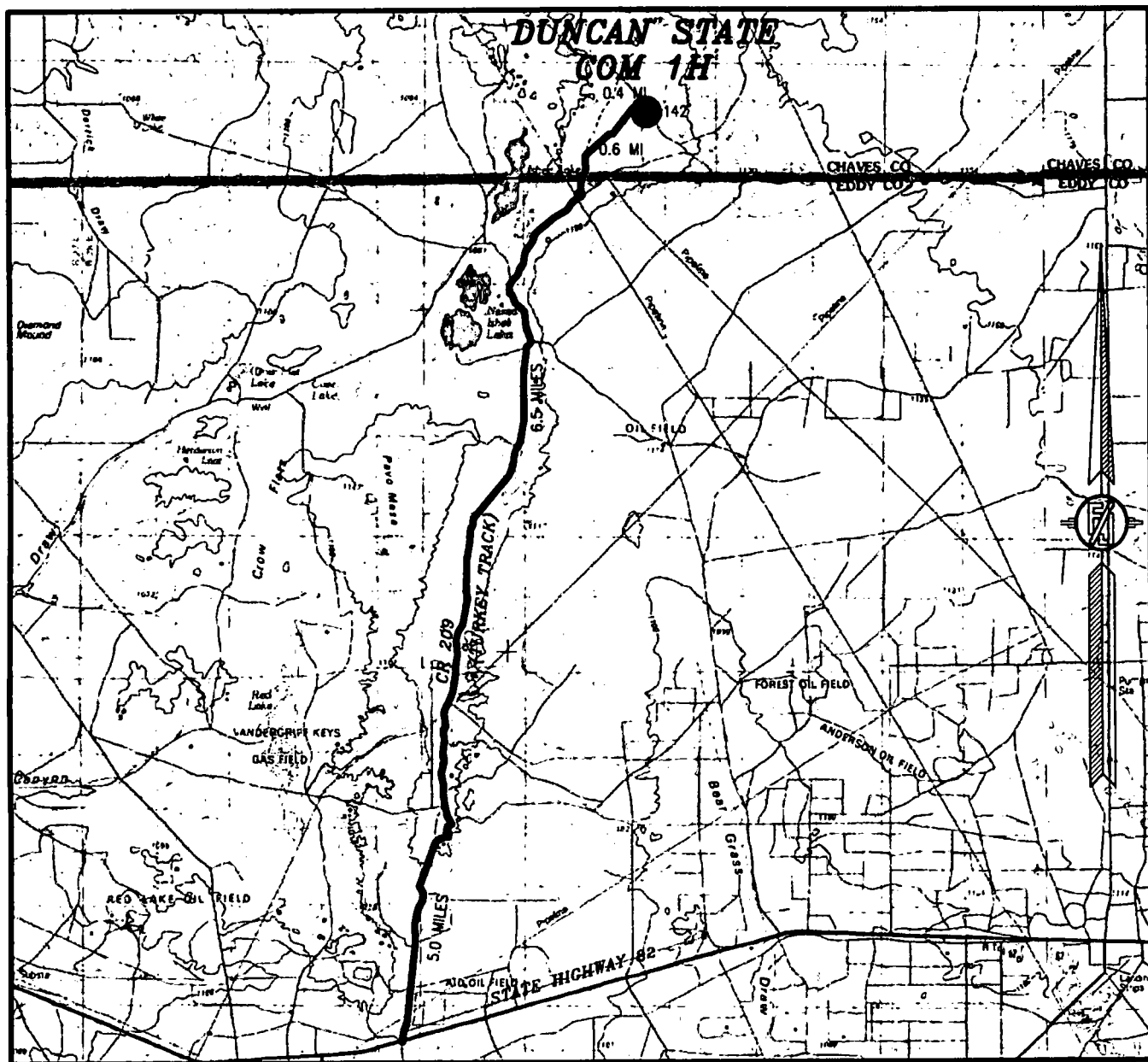
MACK ENERGY CORPORATION
DUNCAN STATE COM 1H
LOCATED 765 FT. FROM THE NORTH LINE
AND 355 FT. FROM THE WEST LINE OF
SECTION 36, TOWNSHIP 15 SOUTH,
RANGE 28 EAST, N.M.P.M.
CHAVES COUNTY, STATE OF NEW MEXICO

JUNE 20, 2018

SURVEY NO. 6318

MADRON SURVEYING, INC. 301 SOUTH CANAL (575) 234-3341 CARLSBAD, NEW MEXICO

SECTION 36, TOWNSHIP 15 SOUTH, RANGE 28 EAST, N.M.P.M.
CHAVES COUNTY, STATE OF NEW MEXICO
VICINITY MAP



DISTANCES IN MILES

NOT TO SCALE

DIRECTIONS TO LOCATION

FROM INTERSECTION OF STATE HIGHWAY 82 AND CR 209 (TURKEY TRACK) GO NORTH ON CR 209 FOR APPROX. 5.0 MILES TO END OF CR MAINTENANCE, CONTINUE NORTH ON TURKEY TRACK ROAD FOR APPROX. 6.5 MILES, CONTINUE NORTHEAST ON 20' CALICHE LEASE ROAD FOR APPROX. 0.6 OF A MILE, TURN EAST ON 20' CALICHE LEASE ROAD AND GO APPROX. 0.4 OF A MILE TO BEGIN ROAD SURVEY, FOLLOW ROAD SURVEY SOUTH APPROX. 142' TO THE NORTHEAST PAD CORNER FOR THIS LOCATION.

MACK ENERGY CORPORATION
DUNCAN STATE COM 1H
LOCATED 765 FT. FROM THE NORTH LINE
AND 355 FT. FROM THE WEST LINE OF
SECTION 36, TOWNSHIP 15 SOUTH,
RANGE 28 EAST, N.M.P.M.
CHAVES COUNTY, STATE OF NEW MEXICO

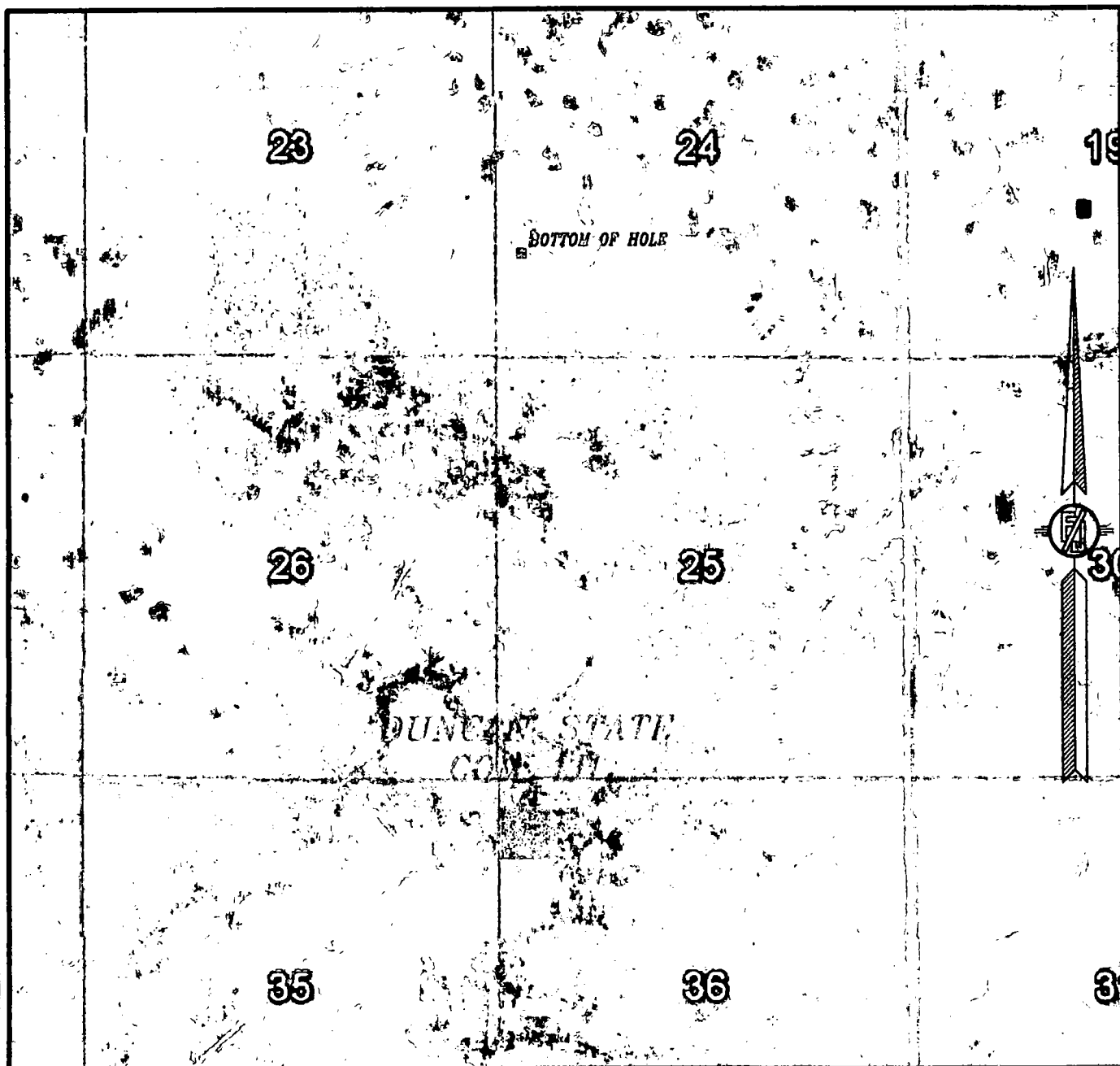
JUNE 20, 2018

SURVEY NO. 6318

MADRON SURVEYING, INC. 301 SOUTH CANAL (575) 234-3341

CARLSBAD, NEW MEXICO

SECTION 36, TOWNSHIP 15 SOUTH, RANGE 28 EAST, N.M.P.M.
CHAVES COUNTY, STATE OF NEW MEXICO
AERIAL PHOTO



NOT TO SCALE
AERIAL PHOTO:
GOOGLE EARTH
FEBRUARY 2017

MACK ENERGY CORPORATION
DUNCAN STATE COM 1H
LOCATED 765 FT. FROM THE NORTH LINE
AND 355 FT. FROM THE WEST LINE OF
SECTION 36, TOWNSHIP 15 SOUTH,
RANGE 28 EAST, N.M.P.M.
CHAVES COUNTY, STATE OF NEW MEXICO

JUNE 20, 2018

SURVEY NO. 6318

MADRON SURVEYING, INC. 301 SOUTH CANAL (575) 234-3341 **CARLSBAD, NEW MEXICO**

ACCESS AERIAL ROUTE MAP



JUNE 20, 2018

MADRON SURVEYING, INC. 301 SOUTH CANAL CARLSBAD, NEW MEXICO
(575) 234-3341

301 SOUTH CANAL
(575) 234-3341