

RECEIVED

District I
1625 N. French Dr., Hobbs, NM 88240
Phone: (575) 393-6161 Fax: (575) 393-0720
District II
811 S. First St., Artesia, NM 88210
Phone: (575) 748-1283 Fax: (575) 748-9720
District III
1000 Rio Brazos Road, Aztec, NM 87410
Phone: (505) 334-6178 Fax: (505) 334-6170
District IV
1220 S. St. Francis Dr., Santa Fe, NM 87505
Phone: (505) 476-3460 Fax: (505) 476-3462

State of New Mexico
Energy, Minerals & Natural Resources Department
OIL CONSERVATION DIVISION
1220 South St. Francis Dr.
Santa Fe, NM 87505
JUN 13 2018
DISTRICT II-ARTESIA O.C.D.

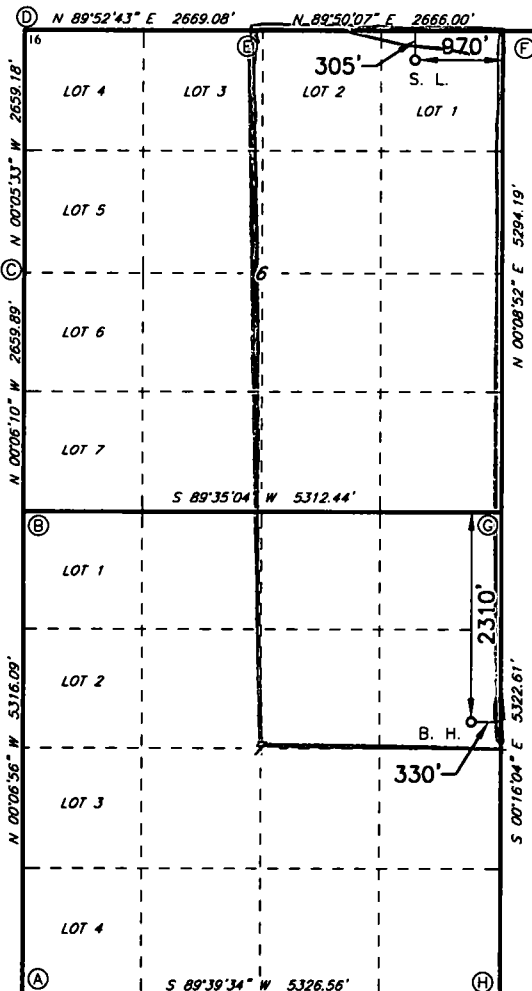
Form C-102
Revised August 1, 2011
Submit one copy to appropriate
District Office

☐ AMENDED REPORT

WELL LOCATION AND ACREAGE DEDICATION PLAT

¹ API Number 30-015-43802		² Pool Code 98220		³ Pool Name Purple Sage; Wolfcamp (Gas)	
⁴ Property Code 316243 319746		⁵ Property Name MOTLEY 6/7 W2AH FEE COM			⁶ Well Number 2H
⁷ OGRID NO. 14744		⁸ Operator Name MEWBOURNE OIL COMPANY			⁹ Elevation 3102'
¹⁰ Surface Location					
UL or lot no. 1	Section 6	Township 24S	Range 28E	Lot Idn 305	North/South line NORTH
Feet from the 305		Feet from the 970		East/West line EAST	
County EDDY					
¹¹ Bottom Hole Location If Different From Surface					
UL or lot no. H	Section 7	Township 24S	Range 28E	Lot Idn 2304	North/South line NORTH
Feet from the 2304		Feet from the 393		East/West line EAST	
County EDDY					
¹² Dedicated Acres 639.88		¹³ Joint or Infill		¹⁴ Consolidation Code	
¹⁵ Order No.					

No allowable will be assigned to this completion until all interest have been consolidated or a non-standard unit has been approved by the division.



GEODETIC DATA
NAD 83 GRID - NM EAST

SURFACE LOCATION
N 455983.4 - E 606857.0

LAT: 32.2533958° N
LONG: 104.1213873° W

BOTTOM HOLE
N 448686.3 - E 607494.7

LAT: 32.2333336° N
LONG: 104.1193715° W

CORNER DATA
NAD 83 GRID - NM EAST

A: FOUND BRASS CAP "1942"
N 445645.1 - E 602512.0

B: FOUND BRASS CAP "1942"
N 450959.9 - E 602501.3

C: FOUND BRASS CAP "1942"
N 453619.2 - E 602496.6

D: FOUND BRASS CAP "1942"
N 456277.8 - E 602492.3

E: FOUND BRASS CAP "1942"
N 456283.4 - E 605160.7

F: FOUND BRASS CAP "1942"
N 456291.1 - E 607826.1

G: CALCULATED CORNER
N 450998.1 - E 607812.4

H: CALCULATED CORNER
N 445676.9 - E 607837.3

¹⁷ OPERATOR CERTIFICATION

I hereby certify that the information contained herein is true and complete to the best of my knowledge and belief, and that this organization either owns a working interest or unleased mineral interest in the land including the proposed bottom hole location or has a right to drill this well at this location pursuant to a contract with an owner of such a mineral or working interest, or to a voluntary pooling agreement or a compulsory pooling order heretofore entered by the division.

Signature: Jackie Lathan 6/6/18
Printed Name: Jackie Lathan

E-mail Address

¹⁸ SURVEYOR CERTIFICATION

I hereby certify that the well location shown on this plat was plotted from field notes of actual surveys made by me or under my supervision, and that the same is true and correct to the best of my belief.

9-1-2016

Date of Survey

Signature and Seal of Professional Surveyor

19680

Certificate Number

RESTAKED 8-24-17, NAME 10-16-17

RRC - Job No.:

LS1708532