

DISTRICT I
1625 N. French Dr., Hobbs, NM 88240
Phone: (575) 393-6161 Fax: (575) 393-0720

DISTRICT II
811 S. First St., Artesia, NM 88210
Phone: (575) 748-1283 Fax: (575) 748-9720

DISTRICT III
1000 Rio Brazos Road, Aztec, NM 87410
Phone: (505) 334-6178 Fax: (505) 334-6170

DISTRICT IV
1220 S. St. Francis Dr., Santa Fe, NM 87505
Phone: (505) 476-3460 Fax: (505) 476-3462

State of New Mexico
Energy, Minerals & Natural Resources Department
OIL CONSERVATION DIVISION
1220 South St. Francis Dr.
Santa Fe, New Mexico 87505

NM OIL CONSERVATION
ARTESIA DISTRICT

AUG 02 2018

RECEIVED

Form C-102

Revised August 1, 2011

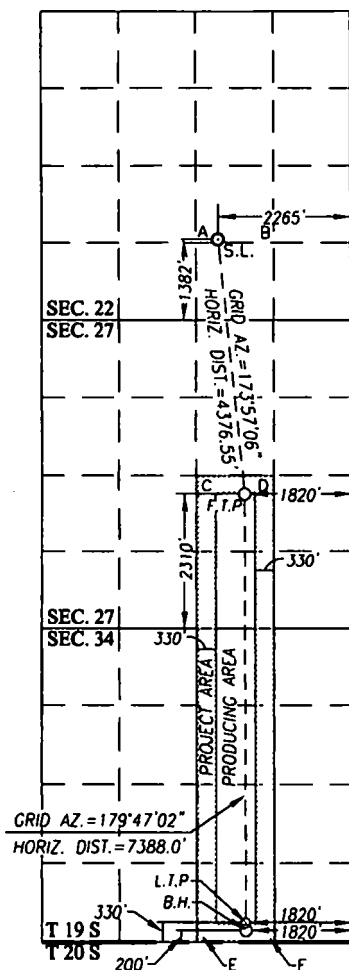
Submit one copy to appropriate District Office

☐ AMENDED REPORT

WELL LOCATION AND ACREAGE DEDICATION PLAT

API Number 30-015.45135		Pool Code 97020		Pool Name Hackberry; Bone Spring NW					
Property Code 322180		Property Name BUTTERCUP 27-34 FEDERAL						Well Number 3H	
OGRID No. 005380		Operator Name XTO ENERGY						Elevation 3292'	
Surface Location									
UL or lot No. J	Section 22	Township 19-S	Range 30-E	Lot Idn	Feet from the 1382	North/South line SOUTH	Feet from the 2265	East/West line EAST	County EDDY
Bottom Hole Location If Different From Surface									
UL or lot No. O	Section 34	Township 19-S	Range 30-E	Lot Idn	Feet from the 200	North/South line SOUTH	Feet from the 1820	East/West line EAST	County EDDY
Dedicated Acres 240		Joint or Infill		Consolidation Code		Order No.			

NO ALLOWABLE WILL BE ASSIGNED TO THIS COMPLETION UNTIL ALL INTERESTS HAVE BEEN CONSOLIDATED OR A NON-STANDARD UNIT HAS BEEN APPROVED BY THE DIVISION



SCALE: 1"=3000'

GEODETTIC COORDINATES		GEODETTIC COORDINATES	
NAD 83 NME		NAD 27 NME	
SURFACE LOCATION		SURFACE LOCATION	
Y = 597643.5 N	X = 656685.7 E	Y = 597581.0 N	X = 615505.8 E
LAT. = 32.642411° N	LONG. = 103.958593° W	LAT. = 32.642292° N	LONG. = 103.958089° W
FIRST TAKE POINT		FIRST TAKE POINT	
NAD 83 NME		NAD 27 NME	
Y = 593292.3 N	X = 657146.7 E	Y = 593230.0 N	X = 615966.8 E
LAT. = 32.630446° N	LONG. = 103.957145° W	LAT. = 32.630327° N	LONG. = 103.956642° W
CORNER COORDINATES TABLE			
NAD 27 NME			
A - Y = 597518.2 N	X = 615129.3 E	B - Y = 597520.6 N	X = 616449.9 E
C - Y = 593559.6 N	X = 615142.5 E	D - Y = 593561.9 N	X = 616463.8 E
E - Y = 585642.5 N	X = 615168.3 E	F - Y = 585644.9 N	X = 616491.6 E
CORNER COORDINATES TABLE			
NAD 83 NME			
A - Y = 597580.6 N	X = 656309.1 E	B - Y = 597583.0 N	X = 657629.8 E
C - Y = 593621.9 N	X = 656322.5 E	D - Y = 593624.2 N	X = 657643.8 E
E - Y = 585704.6 N	X = 656348.4 E	F - Y = 585707.0 N	X = 657671.7 E
LAST TAKE POINT			
NAD 83 NME		NAD 27 NME	
Y = 586036.0 N	X = 657174.1 E	Y = 585973.9 N	X = 615994.0 E
LAT. = 32.610501° N	LONG. = 103.957140° W	LAT. = 32.610382° N	LONG. = 103.956637° W
BOTTOM HOLE LOCATION			
NAD 83 NME		NAD 27 NME	
Y = 585906.1 N	X = 657174.6 E	Y = 585843.9 N	X = 615994.4 E
LAT. = 32.610144° N	LONG. = 103.957140° W	LAT. = 32.610024° N	LONG. = 103.956637° W

OPERATOR CERTIFICATION	
I hereby certify that the information herein is true and complete to the best of my knowledge and belief, and that this organization either owns a working interest or unleased mineral interest in the land including the proposed bottom hole location or has a right to drill this well at this location pursuant to a contract with an owner of such mineral or working interest, or to a voluntary pooling agreement or a compulsory pooling order heretofore entered by the division.	
Signature <i>Stephanie Rabidue</i>	Date
Printed Name <i>Stephanie Rabidue</i>	
E-mail Address <i>Stephanie.rabidue@xtoenergy.com</i>	
SURVEYOR CERTIFICATION	
I hereby certify that the well location shown on this plat was plotted from the original survey made by me or under my supervision, and that the same is true and correct to the best of my belief.	
Date of Survey <i>9/09/2016</i>	Signature <i>Ronald J. Eidson</i>
Seal of Professional Surveyor 3239 REGISTERED PROFESSIONAL SURVEYOR	
Certificate Number <i>3239</i>	Gary G. Eidson 12641 Ronald J. Eidson 3239
ACK	REV.: 9/8/16 JWSC W.O.: 16.11.0406

Ruf
8-2-18



U.S. Department of the Interior
BUREAU OF LAND MANAGEMENT

Drilling Plan Data Report

07/24/2018

APD ID: 10400014647

Submission Date: 05/30/2017

Highlighted data
reflects the most
recent changes

Operator Name: XTO ENERGY INCORPORATED

Well Name: BUTTERCUP 27-34 FEDERAL

Well Number: 3H

Show Final Text

Well Type: OIL WELL

Well Work Type: Drill

Section 1 - Geologic Formations

Formation ID	Formation Name	Elevation	True Vertical Depth	Measured Depth	Lithologies	Mineral Resources	Producing Formation
1	---	3293	0	0	ALLUVIUM, OTHER : Quaternary	NONE	No
2	RUSTLER	3062	231	231	SANDSTONE	USEABLE WATER	No
3	TOP SALT	2807	486	486	SALT	NONE	No
4	BASE OF SALT	1807	1486	1486	SALT	NONE	No
5	YATES	1622	1671	1671	SANDSTONE	NATURAL GAS, OIL, OTHER : Produced Water	No
6	CAPITAN REEF	992	2301	2301	LIMESTONE	USEABLE WATER	No
7	CHERRY CANYON	-703	3996	3996	SANDSTONE	NATURAL GAS, OIL, OTHER : Produced Water	No
8	BRUSHY CANYON	-1303	4596	4596	SANDSTONE	NATURAL GAS, OIL, OTHER : Produced Water	No
9	BONE SPRING	-2813	6106	6106	SANDSTONE	NATURAL GAS, OIL, OTHER : Produced Water	No
10	BONE SPRING 1ST	-4281	7574	7574	SANDSTONE	NATURAL GAS, OIL, OTHER : Produced Water	No
11	BONE SPRING 2ND	-5105	8398	8398	SANDSTONE	NATURAL GAS, OIL, OTHER : Produced Water	Yes

Section 2 - Blowout Prevention

Pressure Rating (PSI): 2M

Rating Depth: 450

Equipment: The blow out preventer equipment (BOP) for the temporary wellhead consists of a 21-1/4" minimum 2M Hydril. MASP should not exceed 466 psi. 2M diagram attached.

Requesting Variance? YES

Variance request: A variance is requested to allow use of a flex hose as the choke line from the BOP to the Choke Manifold. If this hose is used, a copy of the manufacturer's certification and pressure test chart will be kept on the rig. Attached is an example of a certification and pressure test chart. The manufacturer does not require anchors.

Testing Procedure: All BOP testing will be done by an independent service company. Annular pressure tests will be limited to 50% of the working pressure.

Choke Diagram Attachment: