

District I
1625 N. French Dr., Hobbs, NM 88240
Phone: (575) 393-6161 Fax: (575) 393-0720
District II
811 S. First St., Artesia, NM 88210
Phone: (575) 748-1283 Fax: (575) 748-9720
District III
1000 Rio Brazos Road, Aztec, NM 87410
Phone: (505) 334-6178 Fax: (505) 334-6170
District IV
1220 S. St. Francis Dr., Santa Fe, NM 87505
Phone: (505) 476-3460 Fax: (505) 476-3462

State of New Mexico
Energy, Minerals & Natural Resources Department
OIL CONSERVATION DIVISION
1220 South St. Francis Dr.
Santa Fe, NM 87505

Form C-102
Revised August 1, 2011
Submit one copy to appropriate
District Office
☐ AMENDED REPORT

WELL LOCATION AND ACREAGE DEDICATION PLAT

| | | |
|---|--|---|
| ¹ API Number 30-015 - 45148 | ² Pool Code 97494 | ³ Pool Name Cottonwood Draw Wildcat Bone Spring |
| ⁴ Property Code 322234 | ⁵ Property Name COTTONBERRY 20 FEDERAL | ⁶ Well Number SH |
| ⁷ OGRID No. 215099 | ⁸ Operator Name CIMAREX ENERGY CO. | ⁹ Elevation 3148.9' |

"Surface Location

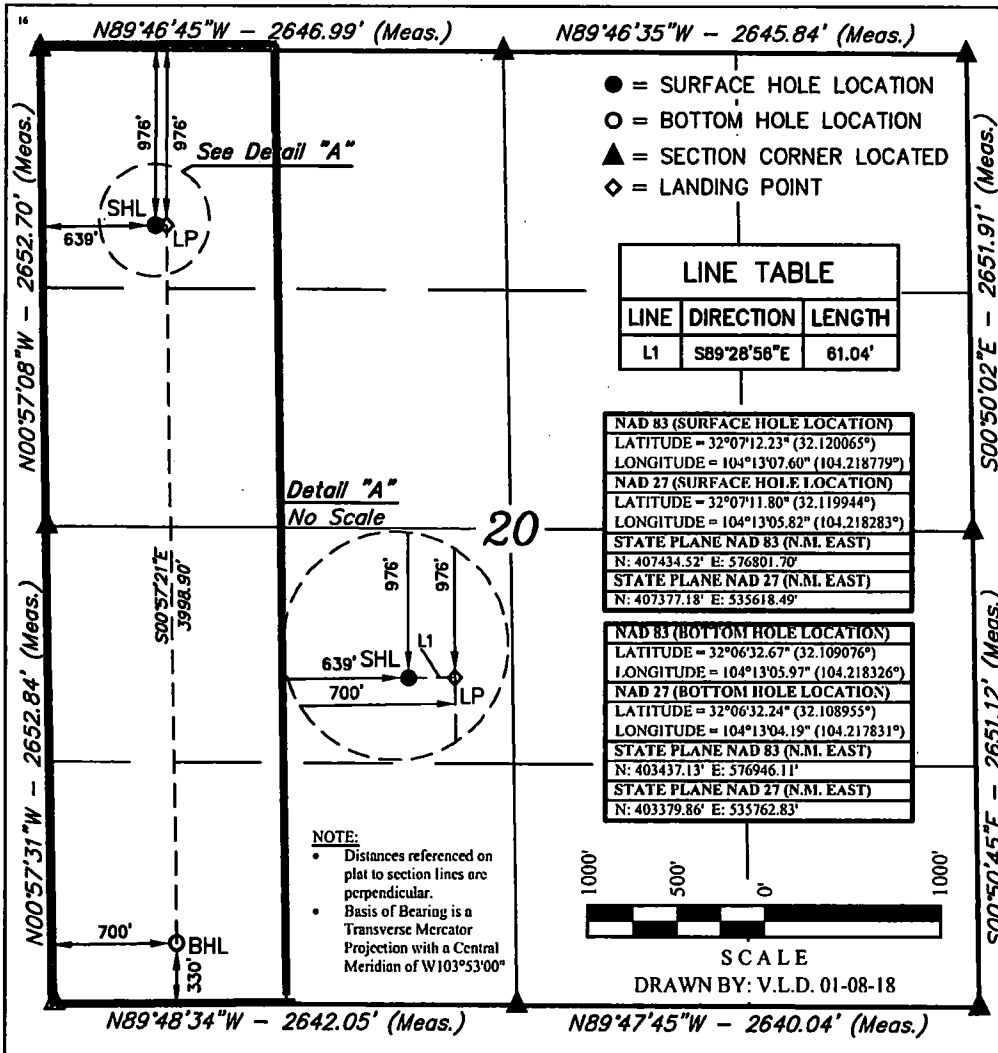
| UL or lot no. | Section | Township | Range | Lot Idn | Feet from the | North/South line | Feet from the | East/West line | County |
|---------------|---------|----------|-------|---------|---------------|------------------|---------------|----------------|--------|
| D | 20 | 25S | 27E | | 976 | NORTH | 639 | WEST | EDDY |

"Bottom Hole Location If Different From Surface

| UL or lot no. | Section | Township | Range | Lot Idn | Feet from the | North/South line | Feet from the | East/West line | County |
|---------------|---------|----------|-------|---------|---------------|------------------|---------------|----------------|--------|
| M | 20 | 25S | 27E | | 330 | SOUTH | 700 | WEST | EDDY |

| | | | |
|--------------------------------------|-------------------------------|----------------------------------|-------------------------|
| ¹² Dedicated Acres 160 | ¹³ Joint or Infill | ¹⁴ Consolidation Code | ¹⁵ Order No. |
|--------------------------------------|-------------------------------|----------------------------------|-------------------------|

No allowable will be assigned to this completion until all interests have been consolidated or a non-standard unit has been approved by the division.



"OPERATOR
CERTIFICATION

I hereby certify that the information contained herein is true and complete to the best of my knowledge and belief, and that this organization either owns a working interest or unleased mineral interest in the land including the proposed bottom hole location or has a right to drill this well at this location pursuant to a contract with an owner of such a mineral or working interest, or to a voluntary pooling agreement or compulsory pooling order heretofore entered by the division.

Signature: *Aricka Easterling* Date: 1/9/18

Aricka Easterling
Printed Name

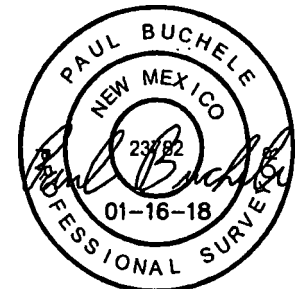
aeasterling@cimarex.com
E-mail Address

"SURVEYOR
CERTIFICATION

I hereby certify that the well location shown on this plat was plotted from field notes of actual surveys made by me or under my supervision, and that the same is true and correct to the best of my belief.

December 21, 2018

Date of Survey
Signature and Seal of Professional Surveyor:



Certificate Number:

Rev 8-9-18



U.S. Department of the Interior
BUREAU OF LAND MANAGEMENT

Drilling Plan Data Report

07/20/2018

APD ID: 10400026448

Submission Date: 01/31/2018

Highlighted data
reflects the most
recent changes

Operator Name: CIMAREX ENERGY COMPANY

Well Name: COTTONBERRY 20 FEDERAL

Well Number: 5H

Show Final Text

Well Type: OIL WELL

Well Work Type: Drill

Section 1 - Geologic Formations

| Formation ID | Formation Name | Elevation | True Vertical Depth | Measured Depth | Lithologies | Mineral Resources | Producing Formation |
|--------------|-----------------|-----------|---------------------|----------------|-------------|-------------------|---------------------|
| 1 | RUSTLER | 3149 | 0 | 0 | | USEABLE WATER | No |
| 2 | SALADO | 1879 | 1270 | 1270 | | NONE | No |
| 3 | CASTILE | 1282 | 1867 | 1867 | | NONE | No |
| 4 | BELL CANYON | 1088 | 2061 | 2061 | | NATURAL GAS,OIL | No |
| 5 | CHERRY CANYON | 133 | 3016 | 3016 | | NATURAL GAS,OIL | No |
| 6 | BRUSHY CANYON | -907 | 4056 | 4056 | | NATURAL GAS,OIL | No |
| 7 | BONE SPRING | -2463 | 5612 | 5612 | | NATURAL GAS,OIL | No |
| 8 | BONE SPRING 1ST | -3469 | 6618 | 6618 | | NATURAL GAS,OIL | No |
| 9 | BONE SPRING 2ND | -3971 | 7120 | 7120 | | NATURAL GAS,OIL | No |
| 10 | BONE SPRING 3RD | -4271 | 7420 | 7420 | | NATURAL GAS,OIL | Yes |

Section 2 - Blowout Prevention

Pressure Rating (PSI): 2M

Rating Depth: 400

Equipment: A BOP consisting of three rams, including one blind ram and two pipe rams and one annular preventer. An accumulator that meets the requirements in Onshore Order #2 for the pressure rating of the BOP stack. A rotating head may be installed as needed. A Kelly clock will be installed and maintained in operable condition and a drill string safety valve in the open position will be available on the rig floor.

Requesting Variance? YES

Variance request: Co-flex line between the BOP and choke manifold. Certification for proposed co-flex hose is attached. The hose is not required by the manufacturer to be anchored. In the event the specific hose is not available, one of equal or higher rating will be used. Variance to include Hammer Union connections on lines downstream of the buffer tank only

Testing Procedure: A multi-bowl wellhead system will be utilized. After running the 13-3/8" surface casing, a 13 5/8" BOP/BOPE system with a minimum working pressure of 3000 psi will be installed on the wellhead system and will be pressure tested to 250 psi low followed by a 3000 psi test. Annular will be tested to 50% of working pressure. The pressure test will be repeated at least every 30 days, as per Onshore Order No. 2. The multi-bowl wellhead will be installed by vendor's representative. A copy of the installation instructions has been sent to the BLM field office. The wellhead will be