

District I  
1625 N. French Dr., Hobbs, NM 88240  
District II  
811 S. First St., Artesia, NM 88210  
District III  
1000 Rio Brazos Road, Aztec, NM 87410  
District IV  
1220 S. St. Francis Dr., Santa Fe, NM 87505

State of New Mexico  
Energy, Minerals and Natural Resources Department  
Oil Conservation Division  
1220 South St. Francis Dr.  
Santa Fe, NM 87505

Submit Original  
to Appropriate  
Regulatory Office  
**NM OIL CONSERVATION  
ARTESIA DISTRICT**

**AUG 17 2018**

**GAS CAPTURE PLAN**

**RECEIVED**

Date: 1/20/2018

X Original

Operator & OGRID No.: Matador Production Company (228937)

☐ Amended - Reason for Amendment: \_\_\_\_\_

This Gas Capture Plan outlines actions to be taken by the Operator to reduce well/production facility flaring/venting for new completion (new drill, recomple to new zone, re-frac) activity.

*Note: A C-129 must be submitted and approved prior to exceeding 60 days allowed by Rule 19.15.18.12.A*

**Well(s)/Production Facility – Name of facility**

The well(s) that will be located at the production facility are shown in the table below.

Well	API	SHL (ULSTR)	SHL Footages	Expected MCF/D	Flared or Vented	Comments
Garrett Fed Com 122H	30-015-	E-32-24S-29E	2312 FNL & 584 FWL	1500	21 days	Time depends on well clean up
Garrett Fed Com 202H	30-015- <b>45180</b>	E-32-24S-29E	2252 FNL & 585 FWL	2500	21 days	Time depends on well clean up
Garrett Fed Com 206H	30-015-	E-32-24S-29E	2342 FNL & 584 FWL	2500	21 days	Time depends on well clean up
Garrett Fed Com 222H	30-015-	E-32-24S-29E	2282 FNL & 585 FWL	7000	21 days	Time depends on well clean up
Garrett Fed Com 226H	30-015-	E-32-24S-29E	2372 FNL & 584 FWL	7000	21 days	Time depends on well clean up

**Gathering System and Pipeline Notification**

The well will be connected to a production facility after flowback operations are complete so long as the gas transporter system is in place. The gas produced from the production facility should be connected to Longwood RB Pipeline, LLC's low/high pressure gas gathering systems located in Eddy County, NM. It will require 2047.64' of pipeline to connect the facility to the gathering system. Matador Production Company periodically provides a drilling, completion and estimated first production date for wells that are scheduled to be drilled in the foreseeable future to Longwood RB Pipeline, LLC. If changes occur that will affect the drilling and completion schedule, Matador Production Company will notify Longwood RB Pipeline, LLC if the gas produced from the well will be processed at a processing plant further downstream and, although unanticipated, any issues with downstream facilities could cause flaring at the wellhead. The actual flow of the gas will be based on compression operating parameters and gathering system pressures measured when the well starts producing.

**Flowback Strategy**

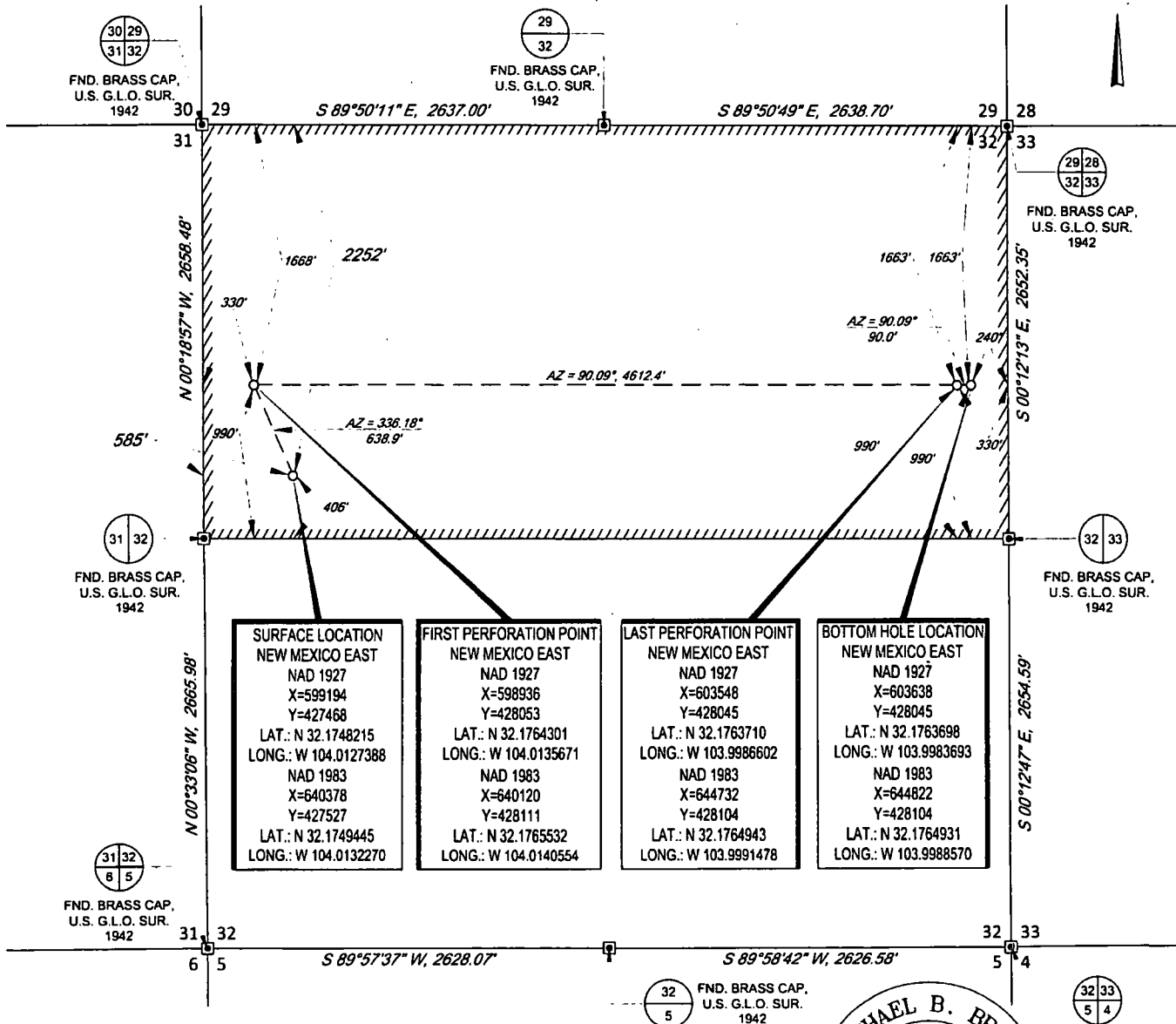
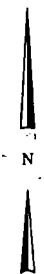
After fracture treatment/completion operations (flowback), the well will be produced to temporary production tanks and the gas will be flared or vented. During flowback, the fluids and sand content will be monitored. If the produced fluids contain minimal sand, then the well will be turned to production facilities. The gas sales should start as soon as the well starts flowing through the production facilities, unless there are operational issues on the midstream system at that time. Based on current information, it is Matador's belief the system will be able to take the gas upon completion of the well.

Safety requirements during cleanout operations may necessitate that sand and non-pipeline quality gas be vented and/or flared rather than sold on a temporary basis.

SCALE: 1" = 1000'  
0' 500' 1000'



SECTION 32, TOWNSHIP 24S, RANGE 29-E, N.M.P.M.  
EDDY COUNTY, NEW MEXICO

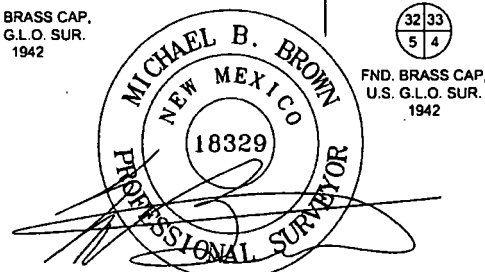


SURFACE LOCATION NEW MEXICO EAST	FIRST PERFORATION POINT NEW MEXICO EAST	LAST PERFORATION POINT NEW MEXICO EAST	BOTTOM HOLE LOCATION NEW MEXICO EAST
NAD 1927 X=599194 Y=427468 LAT.: N 32.1748215 LONG.: W 104.0127388 NAD 1983 X=640378 Y=427527 LAT.: N 32.1749445 LONG.: W 104.0132270	NAD 1927 X=598936 Y=428053 LAT.: N 32.1764301 LONG.: W 104.0135671 NAD 1983 X=640120 Y=428111 LAT.: N 32.1765532 LONG.: W 104.0140554	NAD 1927 X=603548 Y=428045 LAT.: N 32.1763710 LONG.: W 103.9986602 NAD 1983 X=644732 Y=428104 LAT.: N 32.1764943 LONG.: W 103.9991478	NAD 1927 X=603638 Y=428045 LAT.: N 32.1763698 LONG.: W 103.9983693 NAD 1983 X=644822 Y=428104 LAT.: N 32.1764931 LONG.: W 103.9988570

LEASE NAME & WELL NO.: GARRETT FED COM #202H  
SECTION 32 TWP 24-S RGE 29-E SURVEY N.M.P.M.  
COUNTY EDDY STATE NM  
DESCRIPTION 2252' FNL & 585' FWL

DISTANCE & DIRECTION  
FROM INT. OF US-285 & DUARTE RD., GO EAST ON DUARTE RD.  
±1.3 MILES, THENCE SOUTH (RIGHT) ON McDONALD RD. ±2.9  
MILES, THENCE SOUTH (RIGHT) ON LEASE RD. ±2.11 MILES,  
THENCE SOUTH (RIGHT) ON LEASE RD. ±2.9 MILES TO A POINT  
±430 FEET SOUTHEAST OF THE LOCATION.

ALL BEARINGS, DISTANCES, AND COORDINATE VALUES CONTAINED HEREON ARE GRID BASED UPON THE NEW MEXICO STATE PLANE COORDINATE SYSTEM, EAST ZONE OF THE NORTH AMERICAN DATUM 1983, U.S. SURVEY FEET. THIS EASEMENT/SERVITUDE LOCATION SHOWN HEREON HAS BEEN SURVEYED ON THE GROUND UNDER MY SUPERVISION AND PREPARED ACCORDING TO THE EVIDENCE FOUND AT THE TIME OF SURVEY, AND DATA PROVIDED BY MATADOR PRODUCTION COMPANY. THIS CERTIFICATION IS MADE AND LIMITED TO THOSE PERSONS OR ENTITIES SHOWN ON THE FACE OF THIS PLAT AND IS NON-TRANSFERABLE. THIS SURVEY IS CERTIFIED FOR THIS TRANSACTION ONLY.  
AS OF THE DATE OF SURVEY, ALL ABOVE GROUND APPURTENANCES WITHIN 300' OF THE STAKED LOCATION ARE SHOWN HEREON.



Michael Blake Brown, P.S. No. 18329  
SEPTEMBER 01, 2017



**TOPOGRAPHIC**  
LOYALTY INNOVATION LEGACY

1400 EVERMAN PARKWAY, Ste. 197 - FT. WORTH, TEXAS 76140  
TELEPHONE: (817) 744-7512 - FAX (817) 744-7548  
2803 NORTH BIG SPRING - MIDLAND, TEXAS 79705  
TELEPHONE: (432) 682-1853 OR (800) 767-1853 - FAX (432) 682-1743  
WWW.TOPOGRAPHIC.COM