

District I
1625 N. French Dr., Hobbs, NM 88240
Phone: (575) 393-6161 Fax: (575) 393-0720
District II
811 S. First St., Artesia, NM 88210
Phone: (575) 748-1283 Fax: (575) 748-9720
District III
1000 Rio Brazos Road, Aztec, NM 87410
Phone: (505) 334-6178 Fax: (505) 334-6170
District IV
1220 S. St. Francis Dr., Santa Fe, NM 87505
Phone: (505) 476-3460 Fax: (505) 476-3462

State of New Mexico
Energy Minerals and Natural Resources
NM OIL CONSERVATION
Oil Conservation Division **ARTESIA DISTRICT** **AMENDED REPORT**

1220 South St. Francis Dr. **AUG 27 2018**
Santa Fe, NM 87505

RECEIVED

APPLICATION FOR PERMIT TO DRILL, RE-ENTER, DEEPEN, PLUGBACK, OR ADD A ZONE

¹ Operator Name and Address 3BEAR FIELD SERVICES, LLC 1512 LARIMER ST., SUITE 540 DENVER, CO 80202		² OGRID Number 320495 372603 ³ API Number 30-015 45219
⁴ Property Code 322295	⁵ Property Name GILLOCK-BROWN SWD	
		⁶ Well No. 1

7. Surface Location

UL - Lot	Section	Township	Range	Lot Idn	Feet from	N/S Line	Feet From	E/W Line	County
C	33	22S	26E		696	NORTH	1568	WEST	EDDY

8. Proposed Bottom Hole Location

UL - Lot	Section	Township	Range	Lot Idn	Feet from	N/S Line	Feet From	E/W Line	County

9. Pool Information

Pool Name SWD; DEVONIAN-SILURIAN	Pool Code 97869
--	---------------------------

Additional Well Information

¹¹ Work Type N	¹² Well Type S	¹³ Cable/Rotary R	¹⁴ Lease Type P	¹⁵ Ground Level Elevation 3297
¹⁶ Multiple YES	¹⁷ Proposed Depth 13,345'	¹⁸ Formation SILURO-DEVONIAN	¹⁹ Contractor NABORS	²⁰ Spud Date 11/01/2018
Depth to Ground water 187'		Distance from nearest fresh water well 1841'		Distance to nearest surface water 760' (SHEEP DRAW)

☒ We will be using a closed-loop system in lieu of lined pits

21. Proposed Casing and Cement Program

Type	Hole Size	Casing Size	Casing Weight/ft	Setting Depth	Sacks of Cement	Estimated TOC
SURF	17.5"	13.375"	48#	1600	570	0
INTER	12.25"	9.625"	40#	8500	1810	0
LINER	8.75"	7.625"	39#	12225	280	8200

Casing/Cement Program: Additional Comments

PLEASE SEE ATTACHED WELLBORE DIAGRAM

22. Proposed Blowout Prevention Program

Type	Working Pressure	Test Pressure	Manufacturer
SEE ATTACHMENT			

²³ I hereby certify that the information given above is true and complete to the best of my knowledge and belief. I further certify that I have complied with 19.15.14.9 (A) NMAC <input checked="" type="checkbox"/> and/or 19.15.14.9 (B) NMAC <input type="checkbox"/> if applicable. Signature: <i>Jennifer Elrod</i> Printed name: JENNIFER ELROD Title: SR. REGULATORY TECH E-mail Address: jelrod@chisholmenenergy.com Date: 08/27/2018	<div style="text-align: center;">OIL CONSERVATION DIVISION</div> Approved By: <i>Raymond W. Godany</i> Title: <i>Geologist</i> Approved Date: 8-29-18 Expiration Date: 8-29-20 Conditions of Approval Attached Approved C-108
Phone: 817-953-3728	

**NM OIL CONSERVATION
ARTESIA DISTRICT**

AUG 27 2018

District I
1625 N. French Dr., Hobbs, NM 88240
Phone: (575) 393-6161 Fax: (575) 393-0720
District II
811 S. First St., Artesia, NM 88210
Phone: (575) 748-1283 Fax: (575) 748-9720
District III
1000 Rio Brazos Road, Aztec, NM 87410
Phone: (505) 334-6178 Fax: (505) 334-6170
District IV
1220 S. St. Francis Dr., Santa Fe, NM 87505
Phone: (505) 476-3460 Fax: (505) 476-3462

State of New Mexico
Energy, Minerals & Natural Resources Department
OIL CONSERVATION DIVISION
1220 South St. Francis Dr.
Santa Fe, NM 87505

RECEIVED

Form C-102
Revised August 1, 2011
Submit one copy to appropriate
District Office

☐ AMENDED REPORT

WELL LOCATION AND ACREAGE DEDICATION PLAT

¹ API Number 30-015-45219		² Pool Code 97869	³ Pool Name SWD; DEVONIAN-SILURIAN
⁴ Property Code 322295	⁵ Property Name GILLOCK - BROWN SWD		⁶ Well Number 1
⁷ OGRID No. 320495 312603	⁸ Operator Name 3BEAR FIELD SERVICES, LLC		⁹ Elevation 3297'

" Surface Location

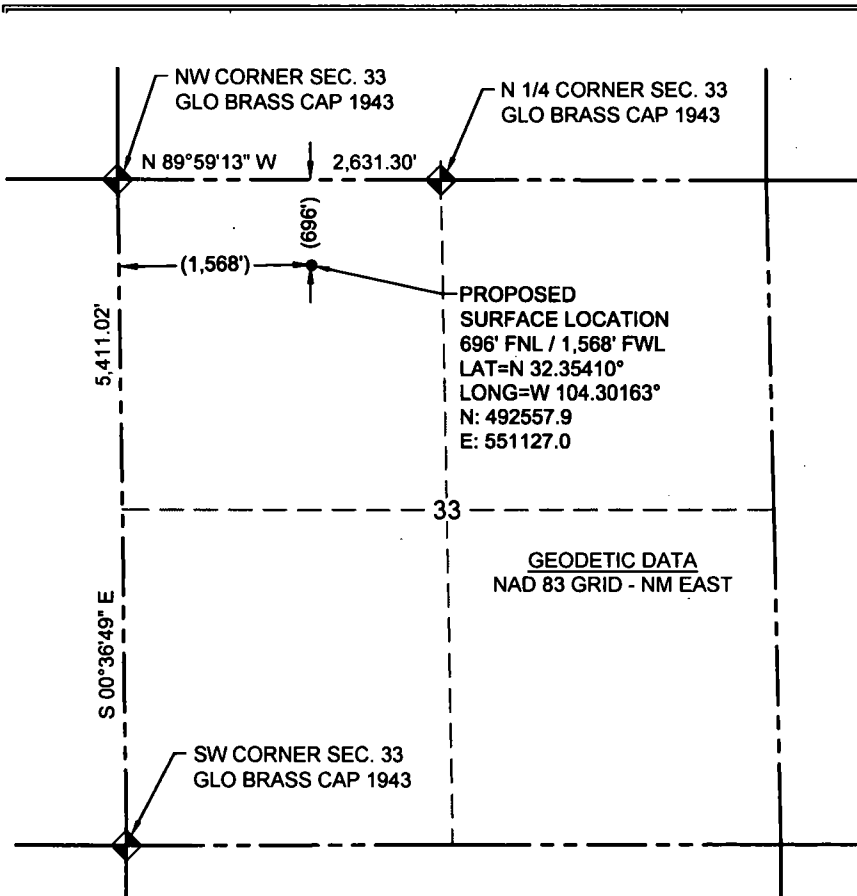
UL or lot no.	Section	Township	Range	Lot Idn	Feet from the	North/South line	Feet from the	East/West line	County
C	33	22S	26E		696	NORTH	1,568	WEST	EDDY

" Bottom Hole Location If Different From Surface

UL or lot no.	Section	Township	Range	Lot Idn	Feet from the	North/South line	Feet from the	East/West line	County

¹² Dedicated Acres	¹³ Joint or Infill	¹⁴ Consolidation Code	¹⁵ Order No.

No allowable will be assigned to this completion until all interests have been consolidated or a non-standard unit has been approved by the division.



" OPERATOR CERTIFICATION

I hereby certify that the information contained herein is true and complete to the best of my knowledge and belief, and that this organization either owns a working interest or unleased mineral interest in the land including the proposed bottom hole location or has a right to drill this well at this location pursuant to a contract with an owner of such a mineral or working interest, or to a voluntary pooling agreement or a compulsory pooling order heretofore entered by the division.

Jennifer Elrod 08/06/2018
Signature Date

JENNIFER ELROD

Printed Name

jelrod@chisholmenenergy.com

E-mail Address

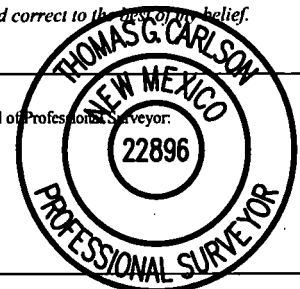
" SURVEYOR CERTIFICATION

I hereby certify that the well location shown on this plat was plotted from field notes of actual surveys made by me or under my supervision, and that the same is true and correct to the best of my belief.

6/07/18

Date of Survey

Signature and Seal of Professional Surveyor:



22896

Certificate Number

Ref 8-29-18



Gillock-Brown SWD 1

Permit # --- API #

TVD ft-RKB	Geological Tops	Wellbore Sketch	Hole Size	Casing	Drilling Fluids	Cement	Potential Mineral Bearing Formations
2,000'	1,150 Base of Salt 1,500 Delaware		17-1/2"	Surface: 13-3/8" 48# J55 STC	PW Spud Mud 8.5 - 9.2 ppg 38 - 40 Viscosity 8 - 10 PV 8 - 10 YP NC API Filtrate	Class C 14.8 ppg 1.34 cuft/sk TOC Surface 570 Sacks	
4,000'	4,950 Bone Spring		12-1/4"	Intermediate: 9-5/8" 40# L80HC BTC	550' - 1,600': Saturated Brine 10.0 - 10.2 ppg 28 - 29 Viscosity PV, YP - NA 1,600' - 8,500': Diesel/Brine Emulsion 8.9 - 9.3 ppg 40 - 45 Viscosity 14 - 21 PV 11 - 20 YP	Stage 1 Lead - Class C 12.7 ppg 2.19 cuft/sk TOC 1,600' 1,145 Sks Tail - Class C 14.8 ppg 1.38 cuft/sk TOC 8,000' 145 Sks Stage 2 Lead - Class C 12.9 ppg 2.19 cuft/sk TOC Surface 375 Sks Tail - Class C 14.8 ppg 1.33 cuft/sk TOC 1,300' 145 Sks	
8,000'	8,500 Wolfcamp		8-3/4"	Liner: 5/8" 39# P110 UFJ	7 Saturated Brine 10.0 - 12.0 ppg 36 - 38 Viscosity 10 - 18 PV 8 - 12 YP 6 - 8 API Filtrate	Lead - Class H 12.7 ppg 1.98 cuft/sk TOC - 8,200' 100 Sks Tail - Class H 14.5 ppg 1.23 cuft/sk TOC - 10,000' 180 Sks	
10,000'	10,075 Strawn 10,450 Atoka		6-1/8"		Cut Brine 8.9 - 9.2 ppg 29 - 30 Viscosity 1 - 3 PV 1 - 3 YP NC API Filtrate		
11,000'	11,000 Morrow 11,200 Barnett 11,500 Mississippi						
12,000'	12,225 Devonian						
13,000'	13,025 Fusselman-Montoya 13,345 Simpson						
14,000'							

JDC Drilling Company, LLC

RIG NO. 7

Annular Preventer

13-5/8" 5,000 PSI WP

Ram Preventers

13-5/8" 10,000 PSI WP Double Ram

13-5/8" 10,000 PSI WP Single Ram

Test the pipe rams, blind rams, floor valves (IBOP and/or upper Kelly valve), choke lines and manifold to 250 psi/5,000 psi with a test plug and a test pump.

Test the annular to 250 psi/2,500 psi with same as above.