

District I
1625 N. French Dr., Hobbs, NM 88240
Phone: (575) 393-6161 Fax: (575) 393-0720

District II
811 S. First St., Artesia, NM 88210
Phone: (575) 748-1283 Fax: (575) 748-9720

District III
1000 Rio Brazos Road, Aztec, NM 87410
Phone: (505) 334-6178 Fax: (505) 334-6170

District IV
1220 S. St. Francis Dr., Santa Fe, NM 87505
Phone: (505) 476-3460 Fax: (505) 476-3462

State of New Mexico
Energy Minerals and Natural Resources

SEP 12 2018

Form C-101
Revised July 18, 2013

Oil Conservation Division

DISTRICT II-ARTESIA AMENDED REPORT

1220 South St. Francis Dr.

Santa Fe, NM 87505

APPLICATION FOR PERMIT TO DRILL, RE-ENTER, DEEPEN, PLUGBACK, OR ADD A ZONE

1. Operator Name and Address BOPCO, LP 6401 Holiday Hill Rd, Bldg 5, Midland, TX 79707		2. OGRID Number 260737
4. Property Code 322435		3. API Number 30-012-45236
5. Property Name POKER LAKE UNIT 16 TWR STATE SWD		6. Well No. 1

7. Surface Location

UL - Lot	Section	Township	Range	Lot Idn	Feet from	N/S Line	Feet From	E/W Line	County
B	16	24S	31E		548	NORTH	1980	EAST	Eddy

8. Proposed Bottom Hole Location

UL - Lot	Section	Township	Range	Lot Idn	Feet from	N/S Line	Feet From	E/W Line	County

9. Pool Information

SWD; Devonian	Pool Name	Pool Code 96101
---------------	-----------	---------------------------

Additional Well Information

11. Work Type NW	12. Well Type S	13. Cable/Rotary R	14. Lease Type STATE	15. Ground Level Elevation 3,494'
16. Multiple	17. Proposed Depth 17,500'	18. Formation DEVONIAN	19. Contractor	20. Spud Date ASAP
Depth to Ground water		Distance from nearest fresh water well		Distance to nearest surface water

☒ We will be using a closed-loop system in lieu of lined pits

21. Proposed Casing and Cement Program

Type	Hole Size	Casing Size	Casing Weight/ft	Setting Depth	Sacks of Cement	Estimated TOC
Surface	24	18.625	J-55 87.5# BTC	550'	1020	0'
Inter	17.5	13.375	HCL-80 68# BTC	4,100'	3665	0'
Prod	12.25	9.625	P-110 53.5# BTC	12,060'	2290	3,500'

Casing/Cement Program: Additional Comments

Prod Liner: 8.5" hole, 7" P-110 32# BTC csg @ 11,700'-16,480' w/710sx cmt. TOC @ 11,700'. Prod hole: 6" 16,480'-17,500'

22. Proposed Blowout Prevention Program

Type	Working Pressure	Test Pressure	Manufacturer
Cameron Double Ram	10,000psi	5,000psi	

23. I hereby certify that the information given above is true and complete to the best of my knowledge and belief.

I further certify that I have complied with 19.15.14.9 (A) NMAC ☒ and/or 19.15.14.9 (B) NMAC ☒, if applicable.

Signature: *Kelly Kardos*

Printed name: **Kelly Kardos**

Title: **Regulatory Coordinator**

E-mail Address: **kelly_kardos@xtoenergy.com**

Date: **09-11-18**

Phone: **432-620-4374**

OIL CONSERVATION DIVISION

Approved By:

Raymond W. Rodary

Title:

*Geologist*Approved Date: **9-14-18**Expiration Date: **9-14-20**

Conditions of Approval Attached

APPROVED C 108

District I

1625 N. French Dr., Hobbs, NM 88240
Phone: (575) 393-6161 Fax: (575) 393-0720

District II

811 S. First St., Artesia, NM 88210
Phone: (575) 748-1283 Fax: (575) 748-9720

District III

1000 Rio Brazos Road, Aztec, NM 87410
Phone: (505) 334-6178 Fax: (505) 334-6170

District IV

1220 S. St. Francis Dr., Santa Fe, NM 87505
Phone: (505) 476-3460 Fax: (505) 476-3462

State of New Mexico
Energy, Minerals & Natural Resources Department

OIL CONSERVATION DIVISION

1220 South St. Francis Dr.

Santa Fe, NM 87505

SEP 12 2018

Form C-102

Revised August 1, 2011

Submit one copy to appropriate

DISTRICT II-ARTESIA O.C.D. District Office

☐ AMENDED REPORT

WELL LOCATION AND ACREAGE DEDICATION PLAT

¹ API Number 30-015-45236	² Pool Code 96101	³ Pool Name SWD; DEVONIAN
⁴ Property Code 322435	⁵ Property Name POKER LAKE UNIT 16 TWR STATE SWD	
⁷ OGRID No. 260737	⁸ Operator Name XTO PERMIAN OPERATING, LLC.	⁶ Well Number 1
		⁹ Elevation 3,494'

¹⁰ Surface Location

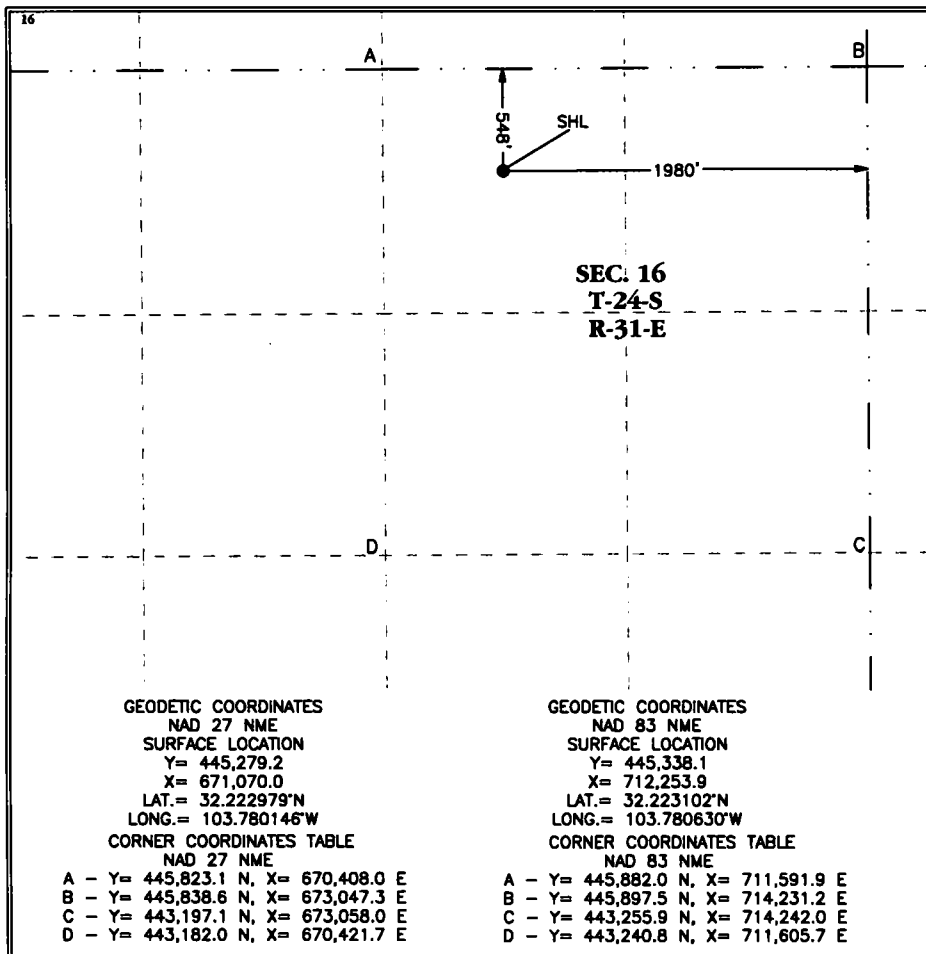
UL or lot no.	Section	Township	Range	Lot Idn	Feet from the	North/South line	Feet from the	East/West line	County
B	16	24 S	31 E		548	NORTH	1,980'	EAST	EDDY

¹¹ Bottom Hole Location If Different From Surface

UL or lot no.	Section	Township	Range	Lot Idn	Feet from the	North/South line	Feet from the	East/West line	County

¹² Dedicated Acres	¹³ Joint or Infill	¹⁴ Consolidation Code	¹⁵ Order No.

No allowable will be assigned to this completion until all interests have been consolidated or a non-standard unit has been approved by the division.

¹⁷ OPERATOR CERTIFICATION

I hereby certify that the information contained herein is true and complete to the best of my knowledge and belief, and that this organization either owns a working interest or unleased mineral interest in the land including the proposed bottom hole location or has a right to drill this well at this location pursuant to a contract with an owner of such a mineral or working interest, or to a voluntary pooling agreement or a compulsory pooling order heretofore entered by the division.

Kelly Kardos 09/11/18
Signature Date

Kelly Kardos

Printed Name

kelly_kardos@xtoenergy.com

E-mail Address

¹⁸ SURVEYOR CERTIFICATION

I hereby certify that the well location shown on this plat was plotted from field notes of actual surveys made by me or under my supervision, and that the same is true and correct to the best of my belief.

06-15-2018

Date of Survey

Signature and Seal of Professional Surveyor:

MARK DILLON HARP 23786

Certificate Number

RR

2018051184



RW 9-14-18

PLU Twin Wells Ranch 16 SWD #1

Proposed SWD Schematic (Sept 10, 2018)

County: Eddy
SHL: 548' FNL, 1980' FEL
Sec 16, T 24S, R 31E

BHL: 548' FNL, 1980' FEL
Sec 16, T 24S, R 31E



AFE # 1802746
XTO ID # N/A
API # N/A
Elevation GL 3494', KB 3521' (27' AGL)
Rig: TBD (RKB 27')

Geology	Casing & Cement	Wellhead	Hole Size	General Notes
(Tech Data Sheet)				
TVD Formation				
372' Rustler	<u>Lead (100% OH excess)</u> 340 sx 12.8ppg Poz/C Top of Lead @ 0 <u>Tail (100% OH excess)</u> 680 sx 14.8ppg Class C Top of Tail @ 250' 18-5/8" 87.5# J-55 BTC	550' MD	24"	
704' Top Salt	<u>Lead (150% OH excess)</u> 2980 sx 12.8ppg Poz/C Top of Lead @ 0 <u>Tail (100% OH excess)</u> 685 sx 14.8ppg Class C Top of Tail @ 3500' 13-3/8" 68# HCL-80 BTC	4100' MD	17-1/2"	
4,198' Delaware	<u>Lead (100% OH excess)</u> 1890 sx 11.5ppg Poz/H Top of Lead @ 3500' 8,070' Bone Spring <u>Tail (100% OH excess)</u> 400 sx 14.8ppg Poz/H Top of Tail @ 11360' 11,366' Wolfcamp 11,909' Wolfcamp B 9-5/8" 53.5# P-110 BTC	11700' MD 12060' MD	12-1/4"	
13,355' Strawn 13,614' Atoka 14,331' Morrow 15,982' Mississippian Lm 16,302' Woodford 16,482' Devonian 7" 32# P-110 BTC	<u>Tail (40% OH excess)</u> 710 sx 14.5ppg Poz/H Top of Tail @ 11700'	16480' MD	8-1/2"	
17,500' TVD at BHL 17,512' Montoya 17,487' Simpson	Open hole completion	17,500' MD 17,500' TVD <u>Approvals</u>	6"	
Prepared by: _____	Peer Reviewed by: _____ Date _____			
Reviewed by: _____	Approved by: _____			