

District I  
1625 N. French Dr., Hobbs, NM 88240  
Phone: (575) 393-6161 Fax: (575) 393-0720  
District II  
811 S. First St., Artesia, NM 88210  
Phone: (575) 748-1283 Fax: (575) 748-9720  
District III  
1000 Rio Brazos Road, Aztec, NM 87410  
Phone: (505) 334-6178 Fax: (505) 334-6170  
District IV  
1220 S. St. Francis Dr., Sante Fe, NM 87505  
Phone: (505) 476-3460 Fax: (505) 476-3462

State of New Mexico  
Energy, Minerals & Natural Resources  
Department  
OIL CONSERVATION DIVISION  
1220 South St. Francis Dr.  
Sante Fe, NM 87505

NM OIL CONSERVATION  
ARTESIA DISTRICT

FORM C-102

Revised August 1, 2011

Submit one copy to appropriate

District Office

SEP 20 2018 ☐ AMENDED REPORT

WELL LOCATION AND ACREAGE DEDICATION RECEIVED

<sup>1</sup> API Number 30-015- 45261	<sup>2</sup> Pool Code 98220	<sup>3</sup> Pool Name Purple Sage; WOLFCAMP
<sup>4</sup> Property Code 322450	<sup>5</sup> Property Name CYPRESS 34 23S29E3434	<sup>6</sup> Well Number #234H
<sup>7</sup> GRID No. 372043	<sup>8</sup> Operator Name TAP ROCK OPERATING, LLC.	<sup>9</sup> Elevation 3093'

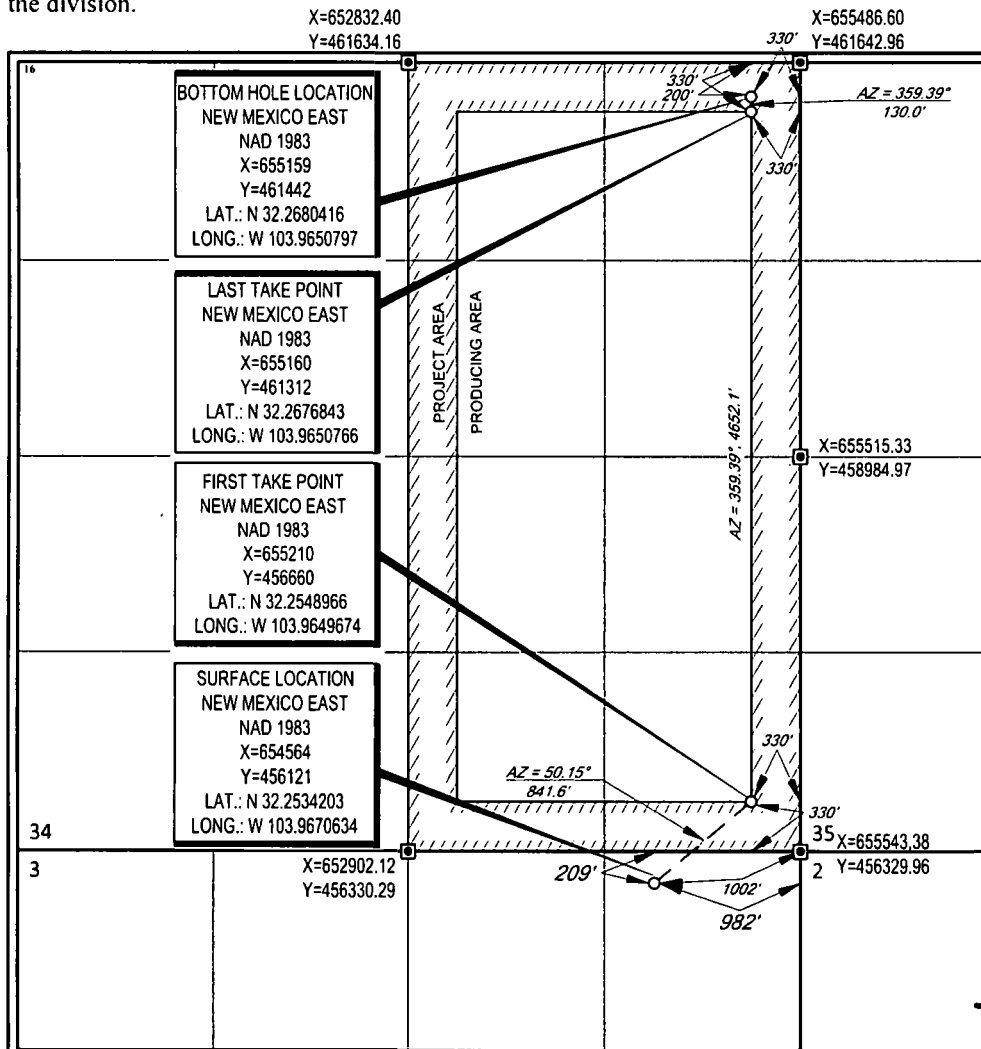
<sup>10</sup>Surface Location

UL or lot no.	Section	Township	Range	Lot Idn	Feet from the	North/South line	Feet from the	East/West line	County
A	3	24-S	29-E	1	209'	NORTH	982'	EAST	EDDY

UL or lot no.	Section	Township	Range	Lot Idn	Feet from the	North/South line	Feet from the	East/West line	County
A	34	23-S	29-E	-	200'	NORTH	330'	EAST	EDDY

<sup>11</sup> Dedicated Acres 320	<sup>12</sup> Joint or Infill	<sup>13</sup> Consolidation Code	<sup>14</sup> Order No.
--------------------------------------	-------------------------------	----------------------------------	-------------------------

No allowable will be assigned to this completion until all interests have been consolidated or a non-standard unit has been approved by the division.



<sup>17</sup>OPERATOR CERTIFICATION  
I hereby certify that the information contained herein is true and complete to the best of my knowledge and belief, and that this organization either owns a working interest or unleased mineral interest in the land including the proposed bottom hole location or has a right to drill this well at this location pursuant to a contract with an owner of such a mineral or working interest, or to a voluntary pooling agreement or a compulsory pooling order heretofore entered by the division.

Signature: *Mike Deutsch* Date: 5-31-18

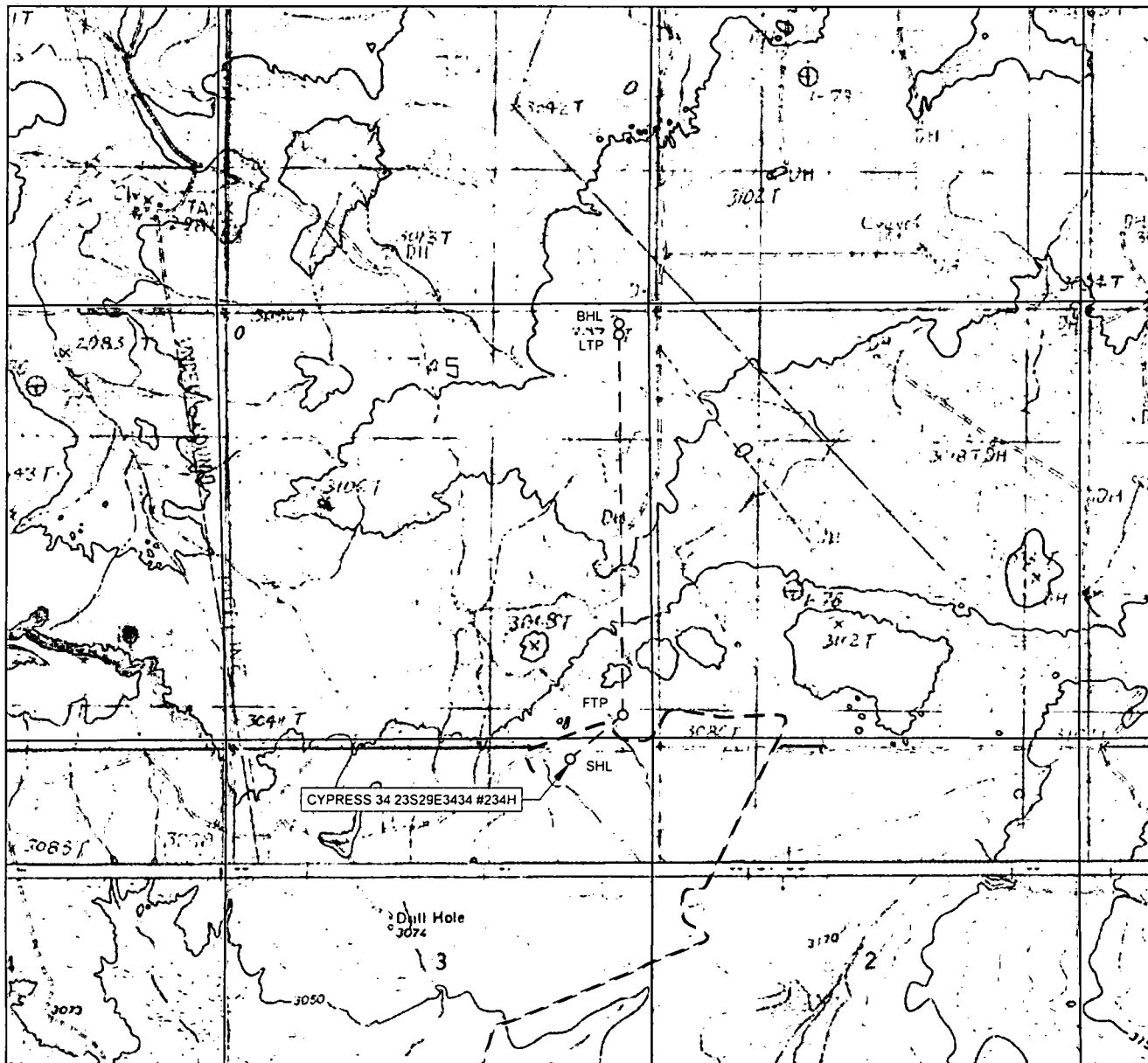
Printed Name: Mike Deutsch  
E-mail Address: mike@permitswest.com

<sup>18</sup>SURVEYOR CERTIFICATION  
I hereby certify that the well location shown on this plat was plotted from field notes of actual surveys made by me or under my supervision, and that the same is true to the best of my belief.

Date of Survey: 03/16/2018  
Signature and Seal of Professional Surveyor: *Stan W. Lloyd*  
Certificate Number: 19642

RWP 9-21-18

# LOCATION & ELEVATION VERIFICATION MAP



LEASE NAME & WELL NO.: CYPRESS 34 23S29E3434 #234H

SECTION 3 TWP 24-S RGE 29-E SURVEY N.M.P.M.  
 COUNTY EDDY STATE NM ELEVATION 3093'  
 DESCRIPTION 209' FNL & 982' FEL

LATITUDE N 32.2534203 LONGITUDE W 103.9670634



SCALE: 1" = 2000'  
 0' 1000' 2000'

THIS EASEMENT/SERVITUDE LOCATION SHOWN HEREON HAS BEEN SURVEYED ON THE GROUND UNDER MY SUPERVISION AND PREPARED ACCORDING TO THE EVIDENCE FOUND AT THE TIME OF SURVEY, AND DATA PROVIDED BY TAP ROCK OPERATING, LLC. THIS CERTIFICATION IS MADE AND LIMITED TO THOSE PERSONS OR ENTITIES SHOWN ON THE FACE OF THIS PLAT AND IS NON-TRANSFERABLE. THIS SURVEY IS CERTIFIED FOR THIS TRANSACTION ONLY.

ALL BEARINGS, DISTANCES, AND COORDINATE VALUES CONTAINED HEREON ARE GRID BASED UPON THE NEW MEXICO COORDINATE SYSTEM OF 1983, EAST ZONE, U.S. SURVEY FEET.



**TOPOGRAPHIC**  
 LOYALTY INNOVATION LEGACY

1400 EVERMAN PARKWAY, Ste. 146 • FT. WORTH, TEXAS 76140  
 TELEPHONE: (817) 744-7512 • FAX (817) 744-7554  
 2903 NORTH BIG SPRING • MIDLAND, TEXAS 79705  
 TELEPHONE: (432) 682-1653 OR (800) 767-1653 • FAX (432) 682-1743  
 WWW.TOPOGRAPHIC.COM