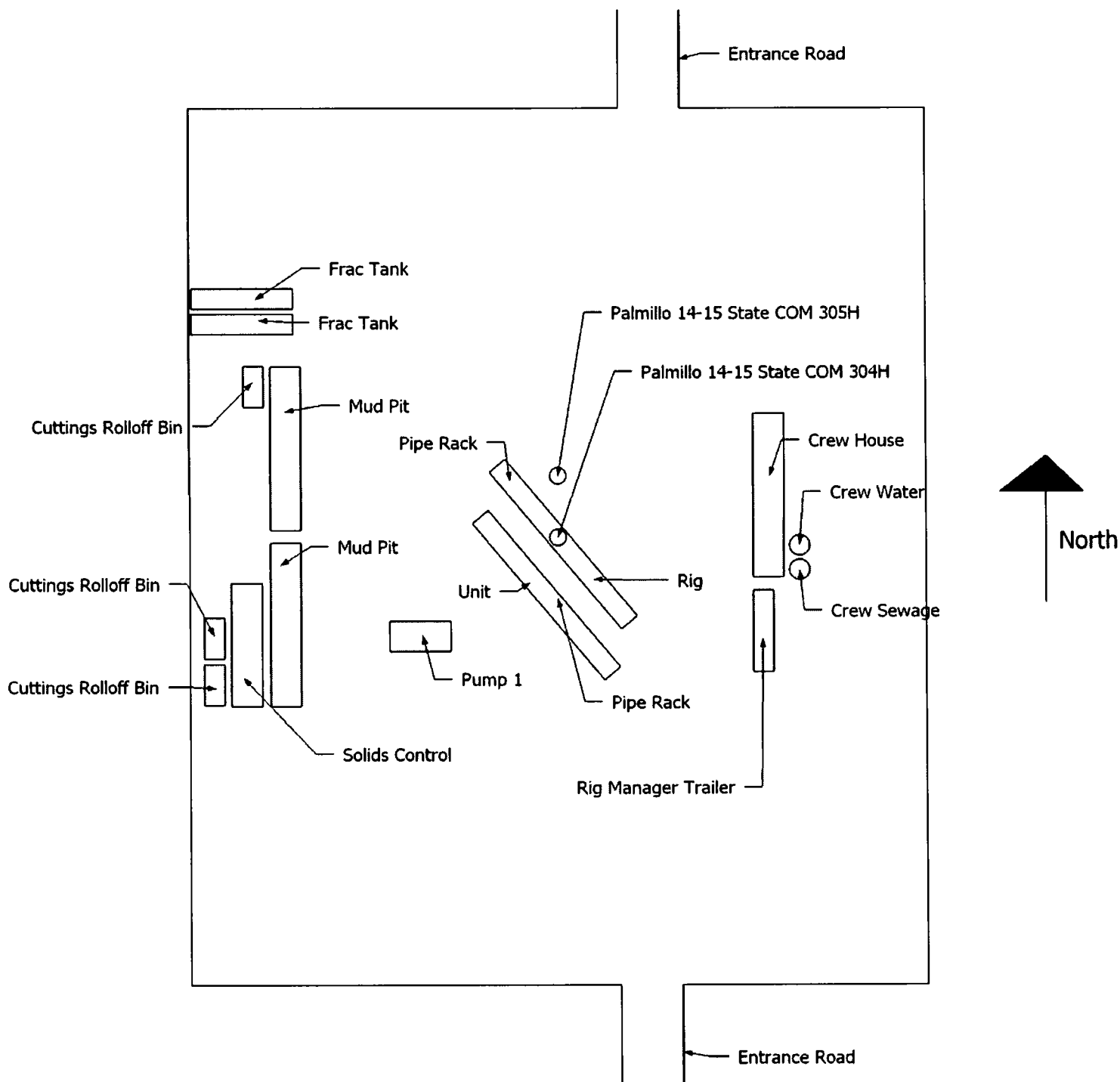


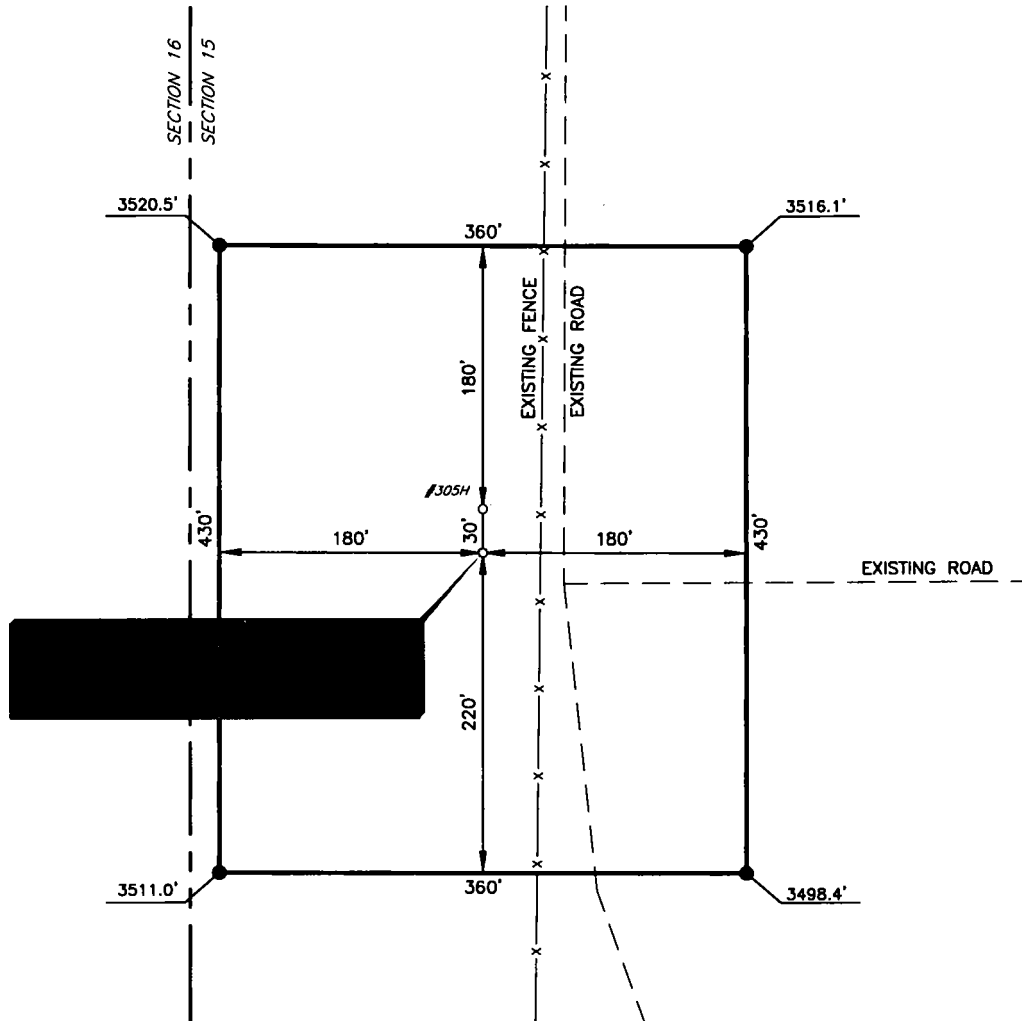
Palmillo 14-15 State Com 304H
30-015-45342

Apache Corp respectfully requests approval for the following changes and additions to the drilling plan:

1. Utilize a spudder rig to pre-set surface casing.
2. Description of Operations
 1. Spudder rig will move in their rig to drill the surface hole section and pre-set surface casing on the Palmillo 14-15 State COM 304H.
 - a. After drilling the surface hole section, the rig will run casing and cement following all of the applicable rules and regulations (19.15.16 NMAC Drilling and Production).
 - b. Rig will utilize fresh water based mud to drill 17-1/2" surface hole to TD. Solids control will be handled entirely on a closed loop basis.
 2. The wellhead (page 3) will be installed and tested once the 13-3/8" surface casing is cut off and the WOC time has been reached.
 3. A blind flange with the same pressure rating as the wellhead will be installed to seal the wellbore. Pressure will be monitored with a pressure gauge installed on the wellhead.
 - a. A means for intervention will be maintained while the drilling rig is not over the well.
 4. Spudder rig operations is expected to take 1-2 days on a single well pad.
 5. The NMOCD will be contacted and notified 24 hours prior to commencing spudder rig operations.
 6. Drilling operations will be performed with the drilling rig. At that time an approved BOP stack will be nipped up and tested on the wellhead before drilling operations commences on each well.
 - a. The NMOCD will be contacted / notified 24 hours before the drilling rig moves back on to the pad with the pre-set surface casing.
 7. Apache Corp will have supervision over the rig to ensure compliance with all NMOCD regulations and to oversee operations.
 8. Once the rig is removed, Apache Corp will secure the wellhead area by placing a guard rail around the cellar area.



APACHE CORPORATION
PALMILLO 14-15 STATE COM #304H
(1750' FNL & 200' FWL)
SECTION 15, T19S, R28E
N. M. P. M., EDDY COUNTY, NEW MEXICO



DIRECTIONS TO LOCATION

*From the intersection of Buckskin Rd. (CR-242) and Millman Rd. (CR-246);
 Go Northwest on Millman Rd. approx. 0.1 miles; Continue onto Hillbilly Rd approx. 1.0 mile;
 Continue onto Millman Rd. approx. 1.7 miles;
 Go right at the 1st cross street to stay on Millman Rd. approx. 0.5 miles;
 Turn left onto lease Rd. approx. 0.5 miles and continue proposed Rd. approx. 0.5 miles;
 Turn right onto a lease Rd. to the Middle Pad.*

THIS IS NOT A BOUNDARY SURVEY, APPARENT PROPERTY CORNERS AND PROPERTY LINES ARE SHOWN FOR INFORMATION ONLY, BOUNDARY DATA IS SHOWN FROM A PREVIOUS SURVEY REFERENCED HEREON.

I, Jeffrey L. Fansler, a N. M. Professional Surveyor, hereby certify that I prepared this plat from an actual survey made on the ground under my direct supervision, said survey and plat meet the Min. Stds. for Land Surveying in the State of N. M. and are true and correct to the best of my knowledge and belief.

Jeffrey L. Fansler
 Jeffrey L. Fansler NM PS 10034



SCALE: 1" = 100'
 0 50' 100'

BEARINGS ARE GRID NAD 83
 NM EAST
 DISTANCES ARE HORIZ. GROUND.

Copyright 2017 - All Rights Reserved

NO.	REVISION	DATE
JOB NO.:	LS18091068	
DWG. NO.:	18091068PAD	

RRC

304 701 S. CECIL ST., HOBBS, NM 88240 (575) 964-8200

SCALE: 1" = 100'
DATE: 09-13-2018
SURVEYED BY: AB/RU
DRAWN BY: JBT
APPROVED BY: JLF
SHEET: 1 OF 1

A topographic map showing contour lines and spot heights. A blacked-out rectangular area is present in the center. A north arrow is on the left. The map includes the following labels:

- 3519T (with an 'x' mark)
- 3500 (contour line)
- 3464 (contour line)
- 3518T
- 3524T (with an 'x' mark)
- 3478T
- 3483T (with an 'x' mark)
- 3469T
- 3461T
- 3472T (with an 'x' mark)
- 3454T
- 3484T
- 3459T (with an 'x' mark)
- 3478T (with an 'x' mark)
- 3486T (with an 'x' mark)
- 3-197
- 3450 (contour line)
- OW (with a circle and cross symbol)

OPERATOR: Apache Corporation
LEASE: Palmillo 14-15 State Com
WELL NO.: 304H
ELEVATION: 3512'

LOCATION: 1750' FNL & 200' FWL
CONTOUR INTERVAL: 10'
USGS TOPO. SOURCE MAP:
Illinois Camp, NM (P. E. 1985)

NO.	REVISION	DATE
JOB NO.: LS18091068		
DWG. NO.:18091068LVM		

RRC

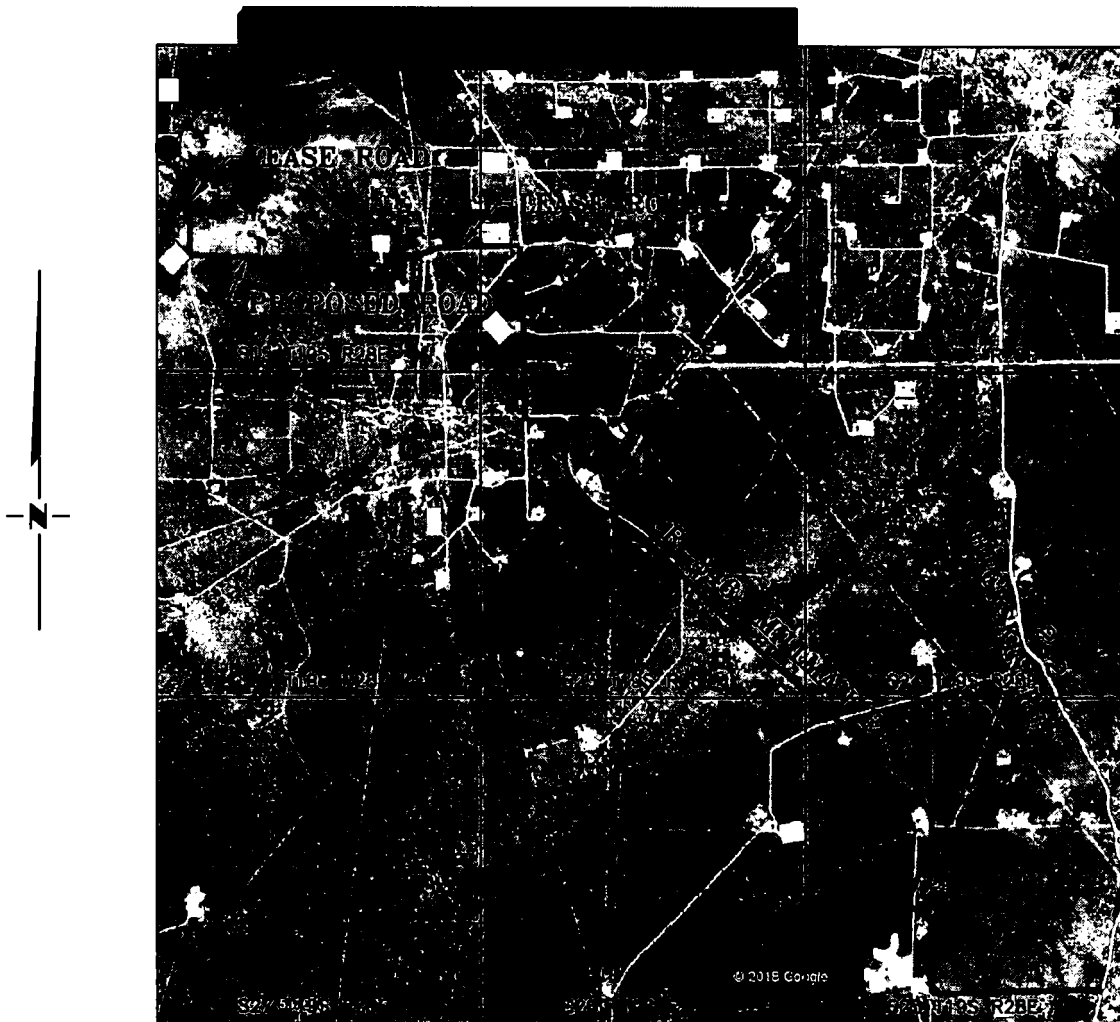
SCALE: 1" = 1000'
DATE: 09-13-2018
SURVEYED BY: AB/RU
DRAWN BY: CAR
APPROVED BY: JLF
SHEET: 1 OF 1

DWG. NO.:18091068LVM 304

701 S. CECIL ST., HOBBS, NM 88240 (575) 964-8200

VICINITY MAP

NOT TO SCALE



*SECTION 15, TWP. 19 SOUTH, RGE. 28 EAST,
N. M. P. M., EDDY COUNTY, NEW MEXICO*

OPERATOR: Apache Corporation
LEASE: Palmillo 14-15 State Com
WELL NO.: 304H

LOCATION: 1750' FNL & 200' FWL
ELEVATION: 3512'

Copyright 2017 - All Rights Reserved

NO.	REVISION	DATE
JOB NO.: LS18091068		
DWG. NO.: 18091068VM		

RRC



304 701 S. CECIL ST., HOBBS, NM 88240 (575) 964-8200

SCALE: N / A
DATE: 09-13-2018
SURVEYED BY: AB/RU
DRAWN BY: CAR
APPROVED BY: JLF
SHEET: 1 OF 1