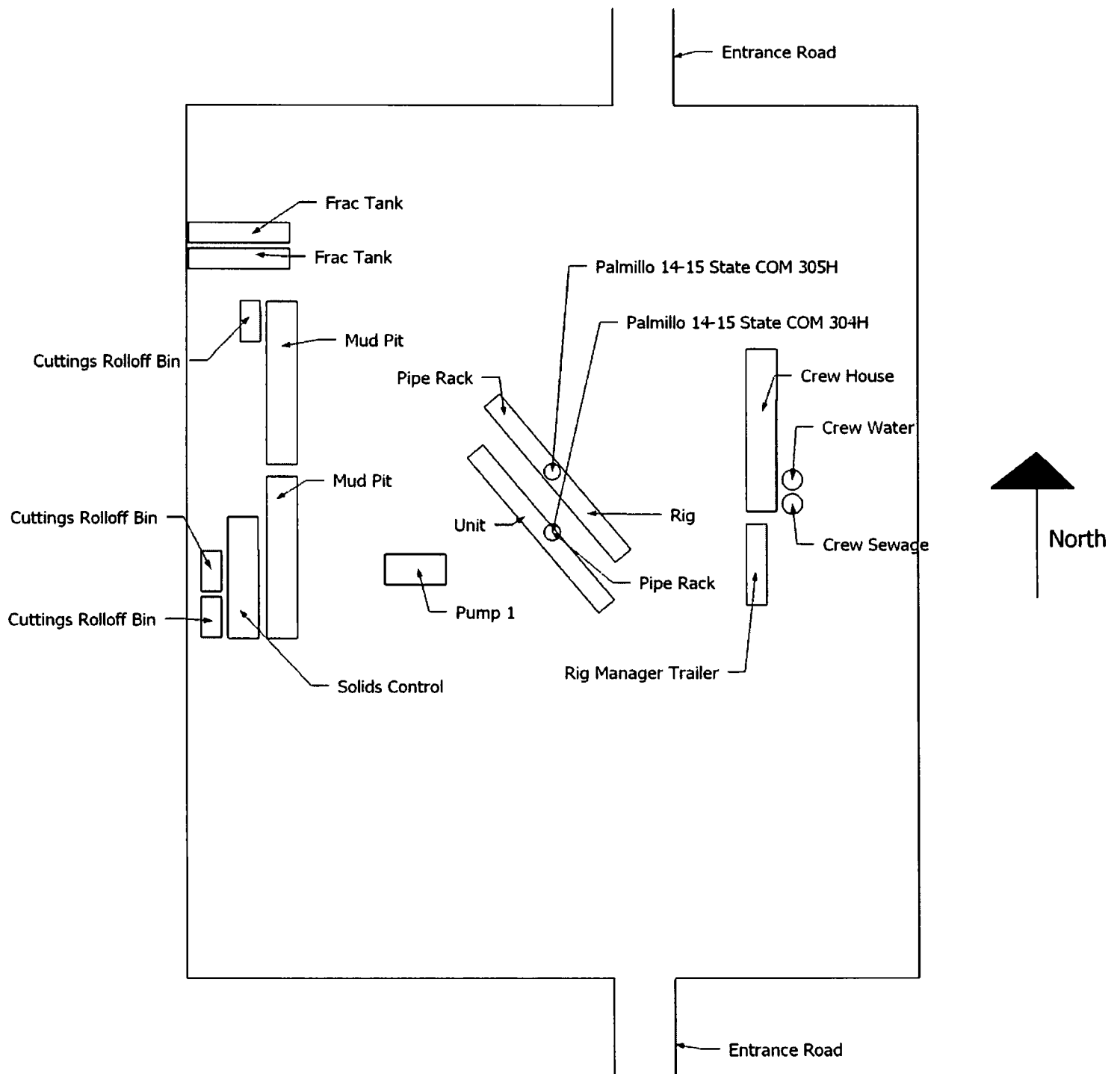
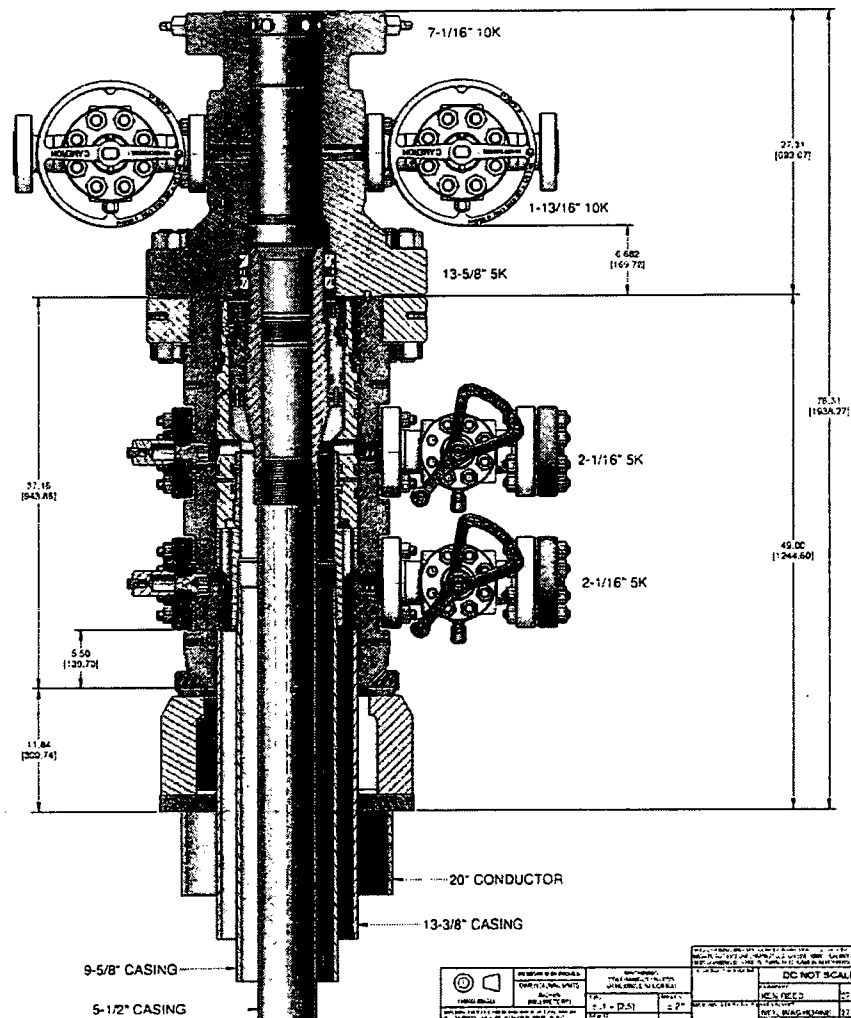
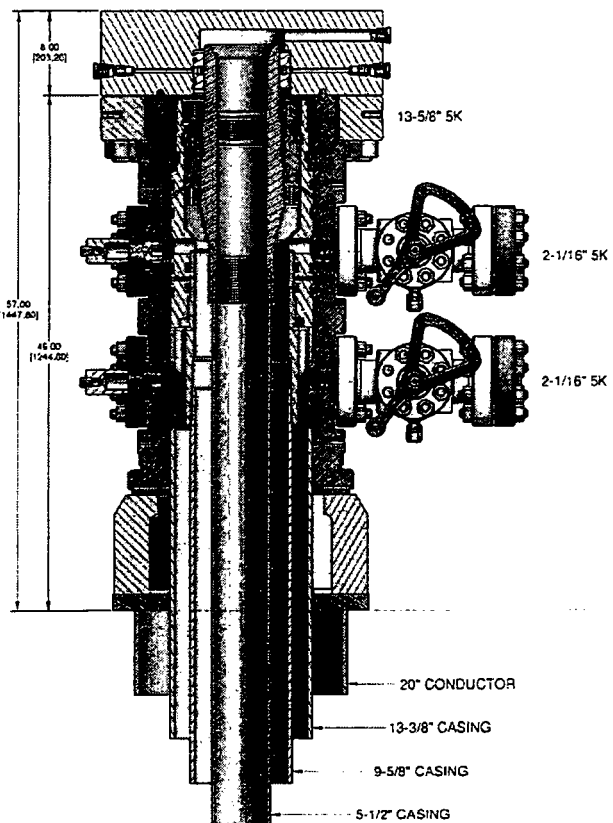


Palmillo 14 15 State Com 305H  
30-015-45343

Apache Corp respectfully requests approval for the following changes and additions to the drilling plan:

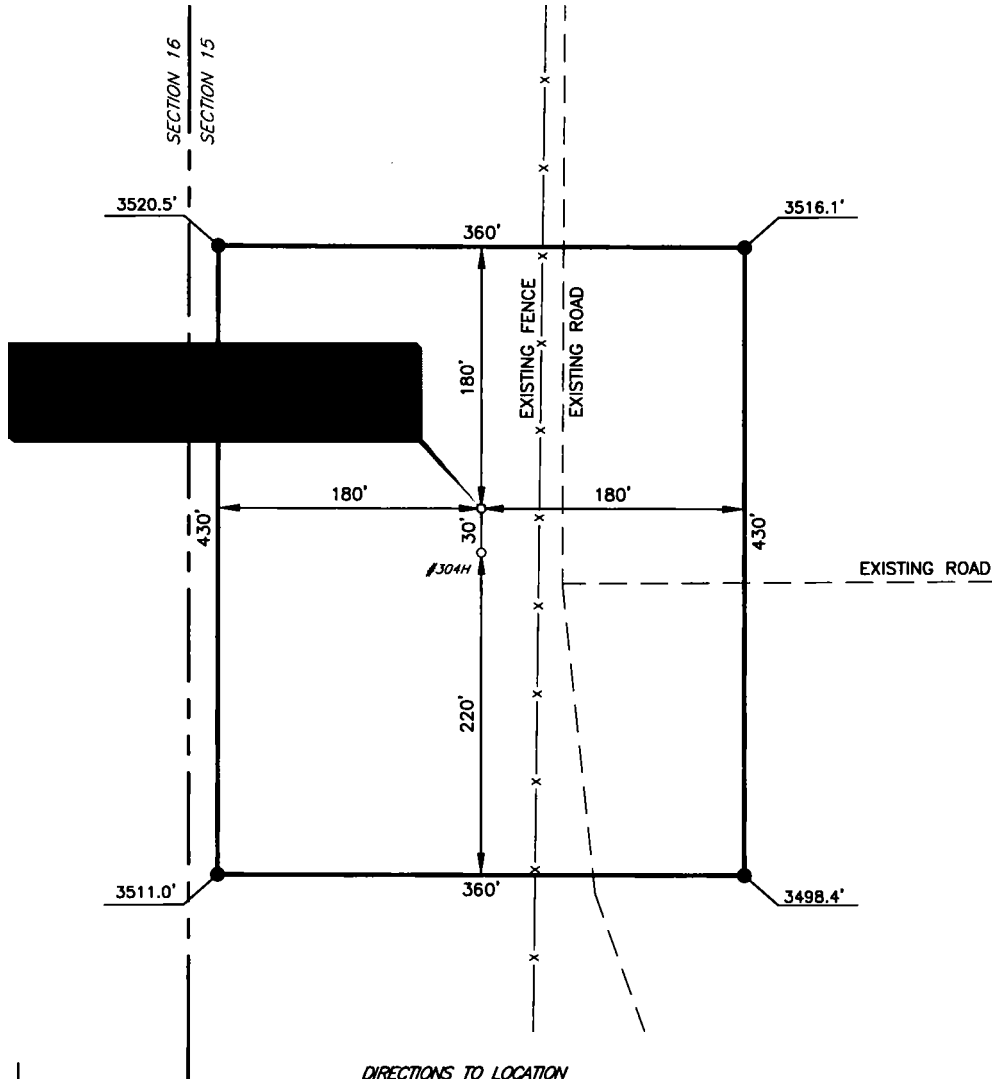
1. Utilize a spudder rig to pre-set surface casing.
2. Description of Operations
  1. Spudder rig will move in their rig to drill the surface hole section and pre-set surface casing on the Palmillo 14-15 State COM 305H.
    - a. After drilling the surface hole section, the rig will run casing and cement following all of the applicable rules and regulations (19.15.16 NMAC Drilling and Production).
    - b. Rig will utilize fresh water based mud to drill 17-1/2" surface hole to TD. Solids control will be handled entirely on a closed loop basis.
  2. The wellhead (page 3) will be installed and tested once the 13-3/8" surface casing is cut off and the WOC time has been reached.
  3. A blind flange with the same pressure rating as the wellhead will be installed to seal the wellbore. Pressure will be monitored with a pressure gauge installed on the wellhead.
    - a. A means for intervention will be maintained while the drilling rig is not over the well.
  4. Spudder rig operations is expected to take 1-2 days on a single well pad.
  5. The NMOCD will be contacted and notified 24 hours prior to commencing spudder rig operations.
  6. Drilling operations will be performed with the drilling rig. At that time an approved BOP stack will be nipped up and tested on the wellhead before drilling operations commences on each well.
    - a. The NMOCD will be contacted / notified 24 hours before the drilling rig moves back on to the pad with the pre-set surface casing.
  7. Apache Corp will have supervision over the rig to ensure compliance with all NMOCD regulations and to oversee operations.
  8. Once the rig is removed, Apache Corp will secure the wellhead area by placing a guard rail around the cellar area.





		<b>DC NOT SCALE</b>	
<b>CAMERON</b>		<b>SURFACE</b>	
13-5/8" 5K MIN-OS M.J. 11-0000L 20" X 13-3/8" X 9-5/8" X 5-1/2"		SD-045137-89-01	

**APACHE CORPORATION**  
**PALMILLO 14-15 STATE COM #305H**  
**(1720' FNL & 200' FWL)**  
**SECTION 15, T19S, R28E**  
**N. M. P. M., EDDY COUNTY, NEW MEXICO**



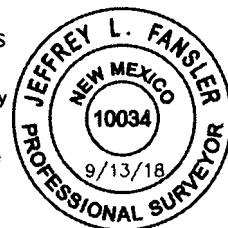
**DIRECTIONS TO LOCATION**

From the intersection of Buckskin Rd. (CR-242) and Millman Rd. (CR-246);  
 Go Northwest on Millman Rd. approx. 0.1 miles; Continue onto Hillbilly Rd approx. 1.0 mile;  
 Continue onto Millman Rd. approx. 1.7 miles;  
 Go right at the 1st cross street to stay on Millman Rd. approx. 0.5 miles;  
 Turn left onto lease Rd. approx. 0.5 miles and continue proposed Rd. approx. 0.5 miles;  
 Turn right onto a lease Rd. to the Middle Pad.

THIS IS NOT A BOUNDARY SURVEY. APPARENT PROPERTY CORNERS AND  
 PROPERTY LINES ARE SHOWN FOR INFORMATION ONLY. BOUNDARY DATA IS  
 SHOWN FROM A PREVIOUS SURVEY REFERENCED HEREON.

I, Jeffrey L. Fansler, a N. M. Professional Surveyor, hereby certify  
 that I prepared this plat from an actual survey made on the  
 ground under my direct supervision, said survey and plat meet  
 the Min. Stds. for Land Surveying in the State of N. M. and are  
 true and correct to the best of my knowledge and belief.

*Jeffrey L. Fansler*  
 Jeffrey L. Fansler NM PS 10034



SCALE: 1" = 100'  
 0 50' 100'

BEARINGS ARE GRID NAD 83  
 NM EAST  
 DISTANCES ARE HORIZ. GROUND.

Copyright 2017 - All Rights Reserved

NO.	REVISION	DATE
JOB NO.:	LS18091068	
DWG. NO.:	18091068PAD	

**RRC**

305 701 S. CECIL ST., HOBBS, NM 88240 (575) 964-8200

SCALE: 1" = 100'
DATE: 09-13-2018
SURVEYED BY: AB/RU
DRAWN BY: JBT
APPROVED BY: JLF
SHEET: 1 OF 1

OPERATOR: Apache Corporation  
LEASE: Palmillo 14-15 State Com  
WELL NO.: 305H  
ELEVATION: 3513'

LOCATION: 1720' FNL & 200' FWL  
 CONTOUR INTERVAL: 10'  
 USGS TOPO. SOURCE MAP:  
 Illinois Camp, NM (P. E. 1985)

NO.	REVISION	DATE
JOB NO.: LS18091068		
DWG. NO.:18091068LVM		

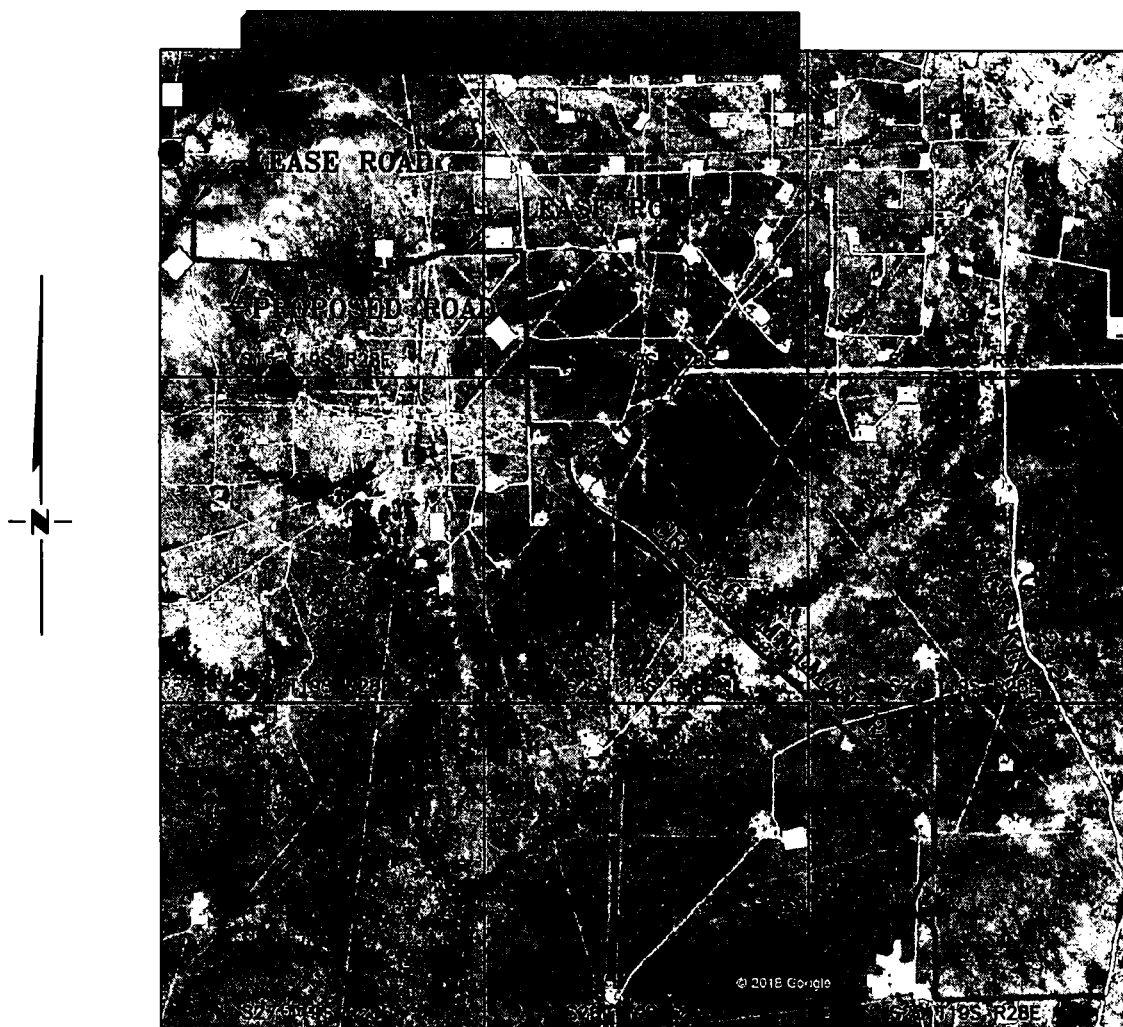
# RRC

SCALE: 1" = 1000'
DATE: 09-13-2018
SURVEYED BY: AB/RU
DRAWN BY: CAR
APPROVED BY: JLF
SHEET: 1 OF 1

DWG. NO.:18091068LVM 305 701 S. CECIL ST., HOBBS, NM 88240 (575) 964-8200

# VICINITY MAP

NOT TO SCALE



*SECTION 15, TWP. 19 SOUTH, RGE. 28 EAST,  
N. M. P. M., EDDY COUNTY, NEW MEXICO*

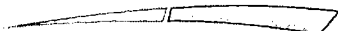
OPERATOR: Apache Corporation  
LEASE: Palmito 14-15 State Com  
WELL NO.: 305H

LOCATION: 1720' FNL & 200' FWL  
ELEVATION: 3513'

Copyright 2017 - All Rights Reserved

NO.	REVISION	DATE
JOB NO.: LS18091068		
DWG. NO.: 18091068VM		

# RRC



305 701 S. CECIL ST., HOBBS, NM 88240 (575) 964-8200

SCALE: N / A
DATE: 09-13-2018
SURVEYED BY: AB/RU
DRAWN BY: CAR
APPROVED BY: JLF
SHEET: 1 OF 1