

1625 N French Dr., Hobbs, NM 88240
Phone: (575) 393-6161 Fax: (575) 393-0720
District II
811 S First St., Artesia, NM 88210
Phone: (575) 748-1283 Fax: (575) 748-9720
District II
1009 Rio Brazos Road, Aztec, NM 87410
Phone: (505) 334-6178 Fax: (505) 334-6170
District IV
1220 S St. Francis Dr., Santa Fe, NM 87505
Phone: (505) 476-3460 Fax: (505) 476-3462

State of New Mexico
Energy Minerals and Natural Resources

Form C-101
Revised July 18, 2013

RECEIVED

☐ AMENDED Report

Oil Conservation Division
1220 South St. Francis Dr.
Santa Fe, NM 87505

OCT 17 2018

DISTRICT II-ARTESIA O.C.D.

APPLICATION FOR PERMIT TO DRILL, RE-ENTER, DEEPEN, PLUGBACK, OR ADD A ZONE

Operator Name and Address Lime Rock Resources II-A, L.P. 1111 Bagby Street, Suite 4600 Houston, Texas 77002		OGRID Number 277558
Property Code 39000		API Number 30-015- 45353
Property Name Stirling 6M		Well No #5

7 Surface Location

UL - Lot	Section	Township	Range	Lot Idn	Feet From	N/S Line	Feet From	E/W Line	County
M (1)	6	18S	27E		330	S	825	W	Eddy

8 Proposed Bottom Hole Location

UL - Lot	Section	Township	Range	Lot Idn	Feet From	N/S Line	Feet From	E/W Line	County
M (1)	6	18S	27E		985	S	990	W	Eddy

9 Pool Information

Red Lake; Glorieta-Yeso NE	51120
----------------------------	-------

Additional Well Information

Work Type N	Well Type O	Cable/ Rotary R	Lease Type P	Ground Level Elevation 3360.8
Multiple N	Proposed Depth 4400' MD / 4272' TVD	Formation Yeso	Contractor United Drilling, Inc	Spud Date After 1/1/2019
Depth to Ground Water: 8 Ft		Distance from nearest fresh water well: 0.25 Miles		Distance from nearest surface water: 0.37 Miles

☒ We will be using a closed-loop system in lieu of lined pits

19 Proposed Casing and Cement Program

Type	Hole Size	Casing Size	Casing Weight/ft	Setting Depth	Sacks of Cement	Estimated TOC
Conductor	26"	20"	91.5	80	100	Surface
Surface	12- 1/4"	8 -5/8"	24	1200	600	Surface
Production	7-7/8"	5-1/2"	17	4400	800	Surface

Casing/Cement Program: Additional Comments

Artesian Aquifer Porosity 1160'-1170'

Proposed Blowout Prevention Program

Type	Working Pressure	Test Pressure	Manufacturer
XLT 11"	5000	2000	National Varco

I hereby certify that the information given above is true and complete to the best of my knowledge and belief.

I further certify that I have complied with 19.15.14.9 (A) NMAC ☐ and/or 19.15.14.9 (B) NMAC 0, if applicable. ☒

Signature: *Eric P. McClusky*
Printed Name: Eric McClusky

Title: Operations Engineer

E-mail Address: emcclusky@limerockresources.com

Date: 10/15/2018

Phone: 713-360-5714

OIL CONSERVATION DIVISION

Approved By:

Raymond W. Podany

Title:

Geologist

Approved Date:

10-19-18

Expiration Date:

10-19-20

Conditions of Approval Attached

RECEIVED

Form C-102

District I
1625 N. French Dr., Hobbs, NM 88240
Phone: (575) 393-6161 Fax: (575) 393-0720

District II
811 S. First St., Artesia, NM 88210
Phone: (575) 748-1283 Fax: (575) 748-9720

District III
1000 Rio Brazos Road, Aztec, NM 87410
Phone: (505) 334-6175 Fax: (505) 334-6170

District IV
1220 S. St. Francis Dr., Santa Fe, NM 87505
Phone: (505) 476-3460 Fax: (505) 476-3462

State of New Mexico
Energy, Minerals & Natural Resources Department
OIL CONSERVATION DIVISION
1220 South St. Francis Dr. DISTRICT II-ARTESIA O.C.D.
Santa Fe, NM 87505

Revised August 1, 2011

Submit one copy to appropriate

District Office

☐ AMENDED REPORT

WELL LOCATION AND ACREAGE DEDICATION PLAT

¹ API Number 30-015-45353	² Pool Code 51120	³ Pool Name Red Lake; GL - 4890
⁴ Property Code 79000	⁵ Property Name STIRLING 6M	⁶ Well Number 5
⁷ OGRID No. 277558	⁸ Operator Name LIME ROCK RESOURCES II-A, L.P.	⁹ Elevation 3360.8

¹⁰ Surface Location

UL or lot no.	Section	Township	Range	Lot Idn	Feet from the	North/South line	Feet from the	East/West line	County
7	6	18 S	27 E		330	SOUTH	825	WEST	EDDY

¹¹ Bottom Hole Location If Different From Surface

UL or lot no.	Section	Township	Range	Lot Idn	Feet from the	North/South line	Feet from the	East/West line	County
7	6	18 S	27 E		985	SOUTH	990	WEST	EDDY

¹² Dedicated Acres 40	¹³ Joint or Infill 40.43	¹⁴ Consolidation Code	¹⁵ Order No.
--	---	----------------------------------	-------------------------

No allowable will be assigned to this completion until all interests have been consolidated or a non-standard unit has been approved by the division.

<p>S89°01'49"E 2624.67 FT</p> <p>NW CORNER SEC. 6 LAT. = 32.7843029°N LONG. = 104.3265059°W NMSP EAST (FT) N = 649061.70 E = 543434.79</p> <p>LOT 4</p>		<p>S88°59'51"E 2667.45 FT</p> <p>N/4 CORNER SEC. 6 LAT. = 32.7841801°N LONG. = 104.3179718°W NMSP EAST (FT) N = 649017.29 E = 543058.41</p> <p>LOT 3</p>		<p>NE CORNER SEC. 6 LAT. = 32.7840505°N LONG. = 104.3092957°W NMSP EAST (FT) N = 648970.63 E = 548724.76</p> <p>LOT 2</p>		<p>SE CORNER SEC. 6 LAT. = 32.7840505°N LONG. = 104.3092957°W NMSP EAST (FT) N = 648970.63 E = 548724.76</p> <p>LOT 1</p>	
<p>W/4 CORNER SEC. 6 LAT. = 32.7770627°N LONG. = 104.3264761°W NMSP EAST (FT) N = 645427.59 E = 543445.05</p> <p>LOT 6</p>		<p>NOTE: LATITUDE AND LONGITUDE COORDINATES ARE SHOWN USING THE NORTH AMERICAN DATUM OF 1983 (NAD83). LISTED NEW MEXICO STATE PLANE EAST COORDINATES ARE GRID (NAD83). BASIS OF BEARING I AND DISTANCES USED ARE NEW MEXICO STATE PLANE, EAST COORDINATES MODIFIED TO THE SURFACE</p>		<p>E/4 CORNER SEC. 6 LAT. = 32.7767472°N LONG. = 104.3092154°W NMSP EAST (FT) N = 646313.59 E = 548750.06</p> <p>LOT 5</p>		<p>SW CORNER SEC. 6 LAT. = 32.7698077°N LONG. = 104.3264802°W NMSP EAST (FT) N = 643788.15 E = 543443.94</p> <p>LOT 7 40.43 AC. (BLM)</p>	
<p>STIRLING 6M 5 ELEV. = 3360.8' LAT. = 32.7706749°N (NAD83) LONG. = 104.3237961°W NMSP EAST (FT) N = 644103.69 E = 544268.95</p>		<p>BOTTOM OF HOLE LAT. = 32.7724668°N LONG. = 104.3232585°W NMSP EAST (FT) N = 644755.64 E = 544434.12</p>		<p>SE CORNER SEC. 6 LAT. = 32.7695498°N LONG. = 104.3091295°W NMSP EAST (FT) N = 643695.09 E = 548777.05</p>		<p>S/4 CORNER SEC. 6 LAT. = 32.7696774°N LONG. = 104.3177684°W NMSP EAST (FT) N = 643741.04 E = 546121.71</p>	
<p>990'</p> <p>825'</p> <p>330'</p> <p>985'</p> <p>SURFACE LOCATION</p>		<p>BOTTOM OF HOLE</p>		<p>990'</p> <p>825'</p> <p>330'</p> <p>985'</p> <p>SURFACE LOCATION</p>		<p>990'</p> <p>825'</p> <p>330'</p> <p>985'</p> <p>SURFACE LOCATION</p>	
<p>N88°59'31"W 2678.88 FT</p>		<p>N89°00'31"W 2656.42 FT</p>		<p>S89°01'49"E 2624.67 FT</p>		<p>S88°59'51"E 2667.45 FT</p>	

¹⁶ OPERATOR CERTIFICATION

I hereby certify that the information contained herein is true and complete to the best of my knowledge and belief, and that this organization either owns a working interest or a leased mineral interest in the land including the proposed bottom hole location or has a right to drill this well at this location pursuant to a contract with an owner of such a mineral or working interest, or to a voluntary pooling agreement or a compulsory pooling order heretofore entered by the division.

Signature: Eric P. McClosky Date: 10/10/18

Printed Name: Eric McClosky

E-mail Address: Emcclsky@linerockresources.com

¹⁷ SURVEYOR CERTIFICATION

I hereby certify that the well location shown on this plat was plotted from field notes of actual surveys made by me or under my supervision, and that the same is true and correct to the best of my belief.

SEPTEMBER 22, 2018

Date of Survey: 10/19/18

Signature and Seal of Professional Surveyor: [Signature]

Certificate Number: FILIMON F. JARAMILLO, PLS 12797

SURVEY NO. 6529

RWP 10-19-18

**Lime Rock Resources II-A, L.P.
Drilling Plan**

30-01545353

**Stirling 6M #5
330' FSL 825' FWL
(M) 6-18S-27E
Eddy County, NM**

1. The elevation of the unprepared ground is 3287.5 feet above sea level.
2. The geologic name of the surface formation is Quaternary – Alluvium.
3. A rotary rig will be utilized to drill the well to 4400' MD/4272' TVD and run casing. This equipment will be down and the well will be completed with a workover rig.
4. Well will be drilled to a total proposed depth of 4400' MD/4272' TVD. The KOP will be at 480'. See directional plan for details.

5. Estimated tops of geologic markers:

	MD	TVD
Quaternary – Alluvium	Surface	Surface
Yates	NA	NA
7 Rivers	NA	NA
Queen	467	467
Grayburg	849	845
Premier	1117	1094
San Andres	1129	1105
Glorieta	2607	2478
Yeso	2723	2595
Tubb	4139	4010
TD	4400	4272

6. Estimated depths at which anticipated oil, gas, or other mineral bearing formations are expected to be encountered:

	MD	TVD
Yates	NA	NA
7 Rivers	NA	NA
Queen	467	467
Grayburg	849	845
Premier	1117	1094
San Andres	1129	1105
Glorieta	2607	2478
Yeso	2723	2595
Tubb	4139	4010
TD	4400	4272

7. Proposed Casing and Cement program is as follows:

Type	Hole	Casing	Wt	Grade	Thread	Depth	Sx	Density	Yield	Components
Conductor	26"	20"	91.5	B	Welded	80	100			Ready Mix
Surface	12- 1/4"	8 -5/8"	24	J-55	ST&C	1200	600	14.8	1.35	Cl C Cmt + 0.25 lbs/sk Cello Flake + 2% CaCl2
Intermediate										
Production	7-7/8"	5-1/2"	17	J-55	LT&C	4400	300	12.8	1.903	(35:65) Poz/Cl C Cmt + 5% NaCl + 0.25 lbs/sk Cello Flake + 5 lbs/sk LCM-1 + 0.2% R-3 + 6% Gel
							500	14.8	1.33	Cl H w/ 0.6% R-3, 0.125% Cello Flake, 2% Gel

8. Proposed Mud Program is as follows

Depth	0-1200	1200-4250	4250-4400
Mud Type	Fresh Water Mud	Brine, Salt Gel, & Starch	Brine, Salt Gel, & Starch
Properties			
MW	8.4-9.2	9.8-10.1	9.9-10.1
pH	9.0-10.5	10.0-12.0	10.0-12.0
WL	NC	NC	20-30
Vis	28-34	28-29	32-34
MC	NC	NC	<2
Solids	NC	<2%	<3%
Pump Rate	300-600 gpm	375-425 gpm	400-425 gpm
Special		Use Poymers sticks and MF-55 Hi-Vis Sweeps as necessary	Hi Vis Sweeps, add acid and starch as req. Raise Vis to 35 for log.

9. **Pressure Control Equipment:** See Attached Description and diagram of Pressure Control Equipment.

10. **Testing, Logging and Coring Program**

Testing Program: No drill stem tests are anticipated

Electric Logging Program: SGR-DLL-CDL-CNL Quad Combo from 4400 to surf. Csg. SGR-CNL to Surf.

Coring Program: No full or sidewall cores are anticipated.

11. **Potential Hazards:**

No abnormal temperatures or pressures are expected. There is no known presence of H₂S in this area. If H₂S is encountered the operator will comply with the provisions of Onshore Oil and Gas Order No. 6. All personnel will be familiar with all aspects of safe operation of equipment being used to drill this well. Estimated BHP 1936 psi based on 0.44 x TD. The estimated BHT is 125 degrees F.

12. **Duration of Operations:**

Anticipated spud date will be soon after approval and as soon as a rig will be available. Move in operations and drilling is expected to take 15 days. An additional 14 days will be needed to complete the well and to construct surface facilities.

H2S CONTINGENCY DRILLING PLAN EMERGENCY CONTACTS

Company Offices - Lime Rock Houston Office
 Answering Service (After Hours)
 Artesia, NM Office
 Roswell, NM

713-292-9510
 713-292-9555
 575-748-9724
 575-623-8424

KEY PERSONNEL

Name	Title	Location	Office #	Cell #	Home #
Steve Hunter	Production Manager	Houston	713-292-9516	832-330-7313	Same as Cell
Spencer Cox	Operations Engineer	Houston	713-292-9528	432-254-5140	Same as Cell
Eric McClusky	Operations Engineer	Houston	713-360-5714	832-491-3079	405-821-0534
Jerry Smith	Assistant Production Supervisor	Artesia	575-748-9724	505-918-0556	575-746-2478
Michael Barrett	Production Supervisor	Roswell	575-623-8424	505-353-2644	575-623-4707
Gary McClland	Well Site Supervisor	Rotates on Site	NA	903-503-8997	NA
Dave Williamson	Well Site Supervisor	Rotates on Site	NA	575-308-9980	NA

Agency Call List

City	Agency or Office	Telephone #
Artesia	Ambulance	911
Artesia	State Police	575-746-2703
Artesia	Sheriff's Office	575-746-9888
Artesia	City Police	575-746-2703
Artesia	Fire Department	575-746-2701
Artesia	Local Emergency Planning Committee	575-746-2122
Artesia	New Mexico OCD District II	575-748-1283
Carlsbad	Ambulance	911
Carlsbad	State Police	575-885-3137
Carlsbad	Sheriff's Office	575-887-7551
Carlsbad	City Police	575-885-2111
Carlsbad	Fire Department	575-885-2111
Carlsbad	Local Emergency Planning Committee	575-887-3798
Carlsbad	US DOI Bureau of Land Management	575-887-6544
State Wide	New Mexico Emergency Response Commission ("NMERC")	505-476-9600
State Wide	NMERC 24 Hour Number	505-827-9126
State Wide	New Mexico State Emergency Operations Center	505-476-9635
National	National Emergency Response Center (Washington D.C.)	800-424-8802

Emergency Services				
Name	Service	Location	Telephone Number	Alternate Number
Boots & Coots International Well Control	Well Control	Houston / Odessa	1-800-256-9688	281-931-8884
Cudd Pressure Control	Well Control/Pumping	Odessa	915-699-0139	915-563-3356
Baker Hughes Inc.	Pumping Services	Artesia, Hobbs & Odessa	575-746-2757	Same
Total Safety	Safety Equipment & Personnel	Artesia	575-746-2847	Same
Cutter Oilfield Services	Drilling Systems Equipment	Midland	432-488-6707	Same
Safety Dog	Safety Equipment & Personnel	Artesia	575-748-5847	575-441-1370
Fighting for Life	Emergency Helicopter Evacuation	Lubbock	806-743-9911	Same
Aerocare	Emergency Helicopter Evacuation	Lubbock	806-747-8923	Same
Med Flight Air Ambulance	Emergency Helicopter Evacuation	Albuquerque	505-842-4433	Same
Artesia General Hospital	Emergency Medical Care	Artesia	575-748-3333	702 North 13th Street

Hydrogen Sulfide Drilling Plan Summary

A. All personnel shall receive proper H₂S training in accordance with Onshore Order 6 III.C.3.a.

B. Briefing Area: two perpendicular areas will be designated by signs and readily accessible.

C. Required Emergency Equipment:

☒ Well control equipment

- a. Flare line 150' from wellhead to be ignited by flare gun.
- b. Choke manifold with a remotely operated choke.
- c. Mud/gas separator

☒ Protective equipment for essential personnel.

Breathing apparatus:

- a. Rescue Packs (SCBA) — 1 unit shall be placed at each breathing area, 2 shall be stored in the safety trailer.
- b. Work/Escape packs —4 packs shall be stored on the rig floor and contain sufficiently long air hoses as to not to restrict work activity.
- c. Emergency Escape Packs —4 packs shall be stored in the doghouse for emergency evacuation.

Auxiliary Rescue Equipment:

- a. Stretcher
- b. Two OSHA full body harness
- c. 100 ft 5/8 inch OSHA approved rope
- d. 1-20# class ABC fire extinguisher

☒ H₂S detection and monitoring equipment:

The stationary detector with three sensors will be placed in the upper dog house if equipped, set to visually alarm @ 10 ppm and audible @ 14 ppm. Calibrate a minimum of every 30 days or as needed.

The sensors will be placed in the following places: Rig floor / Bell nipple / End of flow line or where well bore fluid is being discharged.

(Gas sample tubes will be stored in the safety trailer)

☒ Visual warning systems:

- a. One color code condition sign will be placed at the entrance to the site reflecting the possible conditions at the site.
- b. A colored condition flag will be on display, reflecting the current condition at the site at the time.
- c. Two wind socks will be placed in strategic locations, visible from all angles.

☒ Mud program:

The mud program has been designed to minimize the volume of H₂S circulated to surface. The operator will have the necessary mud products to minimize hazards while drilling in H₂S bearing zones.

Metallurgy:

- a. All drill strings, casings, tubing, wellhead, blowout preventer, drilling spool, kill lines, choke manifold and lines, and valves shall be suitable for H₂S service.
- b. All elastomers used for packing and seals shall be H₂S trim.

Communication:

Communication will be via two way radio in emergency and company vehicles. Cell phones and land lines where available.

Pressure Control Equipment

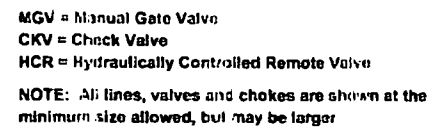
The blowout preventer equipment (BOP) will consist of a 5000 psi rated, "XLT" type, National VARCO double ram preventer that will be tested to a maximum pressure of 2000 psi. The unit will be hydraulically operated and the ram type preventer will be equipped with blind rams on top and drill pipe rams on bottom. The 2M BOP will be installed on the 9 5/8" surface casing and utilized continuously until total depth is reached. All casing strings will be tested as per Onshore Order #2. This also includes a thirty day (30) test, should the rig still be operating on the same well in thirty days.

Pipe rams will be operated and checked each 24 hour period and each time the drill pipe is out of the hole. These functional tests will be documented on the daily drilling logs.

The BOP equipment will consist of the following:

- Double ram with blind rams (top) and pipe rams (bottom),
- Drilling spool, or blowout preventer with 2 side outlets (choke side shall be a 2" minimum diameter, kill side will be at least 2 inch diameter),
- Kill line (2 inch minimum),
- A minimum of 2 choke line valves (2 inch minimum),
- 2 inch diameter choke line,
- 2 kill valves, one of which will be a check valve (2 inch minimum),
- 2 chokes, one of which will be capable of remote operation,
- Pressure gauge on choke manifold,
- Upper Kelly cock valve with handle available,
- Safety valve and subs to fit all drill string connections in use,
- All BOPE connections subjected to well pressure will be flanged, welded, or clamped,
- A Fill-up line above the uppermost preventer.

4



Lime Rock Resources II-A, L.F.

Stirling 6M #5

Unit M, S6-T18S-R27E, Eddy County, NM

Design: Closed Loop System with roll-off steel bins (pits)

CRI/HOBBS will supply (2) bins (100 bbl) volume, rails and transportation relating to the Close Loop System. Specification of the Closed Loop System is attached.

Contacts: Gary Wallace (432) 638-4076 Cell (575) 393-1079 Office

Scomi Oil Tool: Supervisor – Armando Soto (432) 553-7979 Hobbs, NM

Monitoring 24 Hour service

Equipment: Centrifuges – Derrick Brand
Rig Shakers – Brandt Brand
D-watering Unit
Air pumps on location for immediate remediation process
Layout of Close Loop System with bins, centrifuges and shakers attached.

Cuttings and associated liquids will be hauled to a State regulated third party disposal site (CRI or Controlled Recovery, Inc.). The disposal site permit is DFP = #R9166.

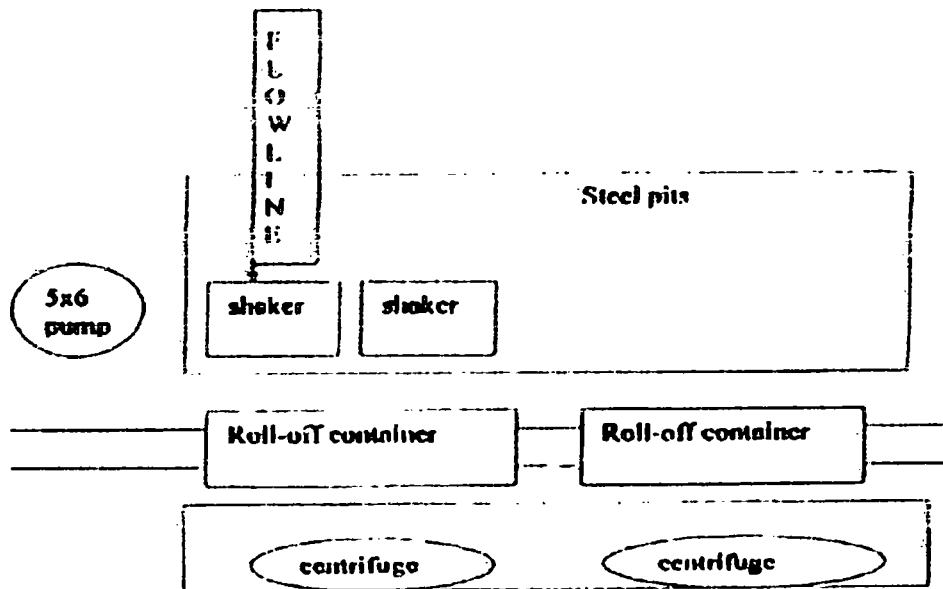
2- (250 bbl) tanks to hold fluid
2-CRI bins with track system
2-500 bbl frac tanks with fresh water
2-500 bbl frac tanks for brine water

Operations:

Closed Loop System equipment will be inspected daily by each tour and any necessary maintenance performed. leak in system will be repaired and/or contained immediately. OCD will be notified within 48 hours of any spill. Remediation process will start immediately.

Closure:

During drilling operations all liquids, drilling fluids and cuttings will be hauled off via CRI equipment to DFP #R9166.



This will be maintained by 24 hour solids control personnel that stay on location.

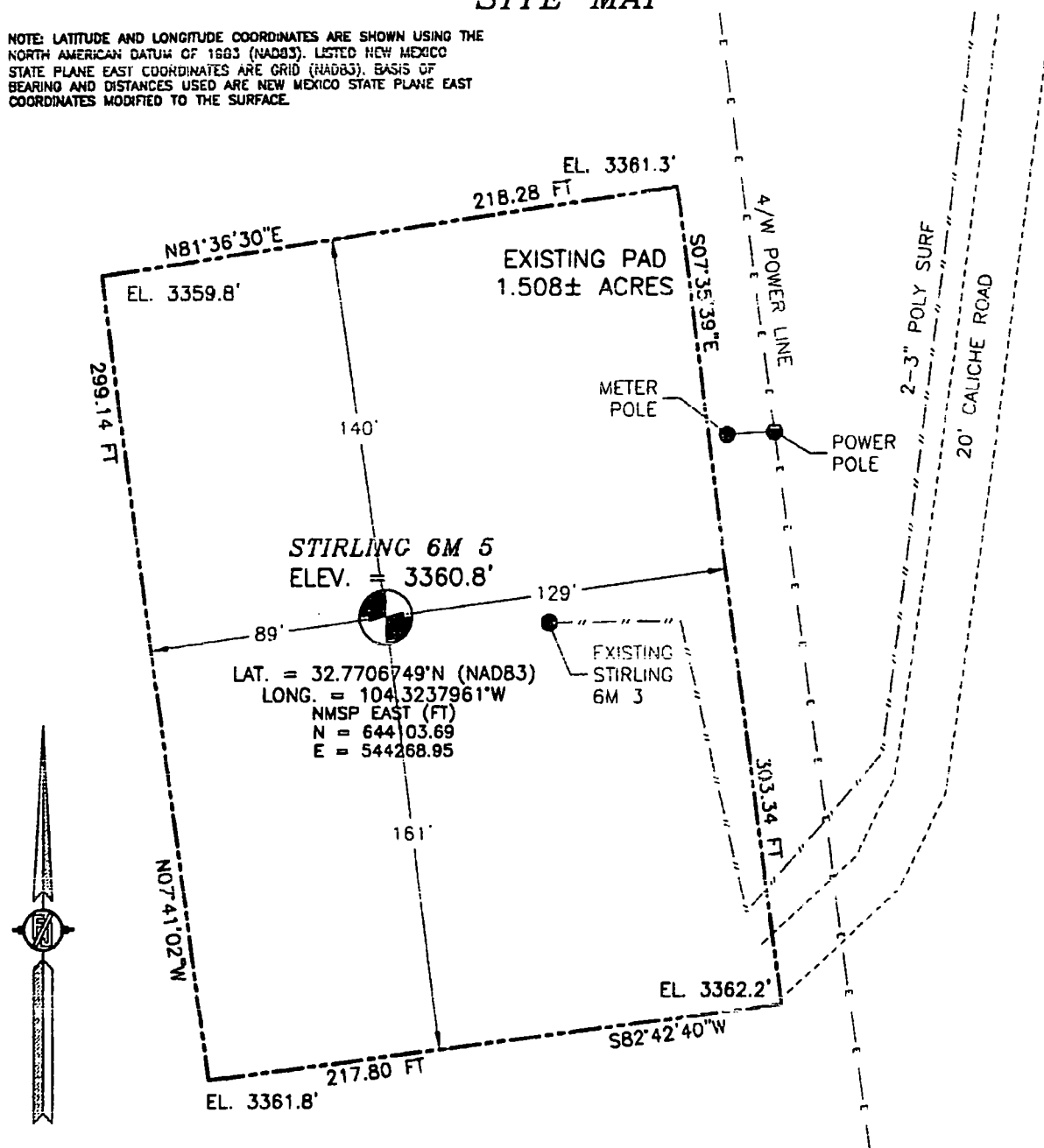
TOMMY WILSON
CLS
CLOSED LOOP
SPECIALTY

Office: 575.744.1609

Cell: 575.748.6187

**SECTION 6, TOWNSHIP 18 SOUTH, RANGE 27 EAST, N.M.P.M.
EDDY COUNTY, STATE OF NEW MEXICO
SITE MAP**

NOTE: LATITUDE AND LONGITUDE COORDINATES ARE SHOWN USING THE NORTH AMERICAN DATUM OF 1983 (NAD83). LISTED NEW MEXICO STATE PLANE EAST COORDINATES ARE GRID (NAD83). BASIS OF BEARING AND DISTANCES USED ARE NEW MEXICO STATE PLANE EAST COORDINATES MODIFIED TO THE SURFACE.



0 6 30 60 120

SCALE 1" = 60'

DIRECTIONS TO LOCATION

(FROM) CALICHE CR. 201 (CHALK BLUFF) AND CALICHE CR. 227 (LITTLE DIAMOND) GO NORTH ON CR. 201 0.5 MILE, TURN LEFT AND GO WEST 0.1 MILE, BEND LEFT AND GO SOUTHWEST 0.3 MILE, BEND RIGHT AND GO WEST 0.09 MILE, BEND RIGHT AND GO NORTHWEST 0.6 MILE, TURN LEFT AND GO SOUTHWEST 0.6 MILE, TURN RIGHT AND GO SOUTHWEST 0.2 MILE TO THE SOUTHEAST CORNER OF EXISTING PAD FOR THIS LOCATION.

LIME ROCK RESOURCES II-A, L.P.

STIRLING 6M 5

**LOCATED 330 FT. FROM THE SOUTH LINE
AND 825 FT. FROM THE WEST LINE OF
SECTION 6, TOWNSHIP 18 SOUTH,
RANGE 27 EAST, N.M.P.M.
EDDY COUNTY, STATE OF NEW MEXICO**

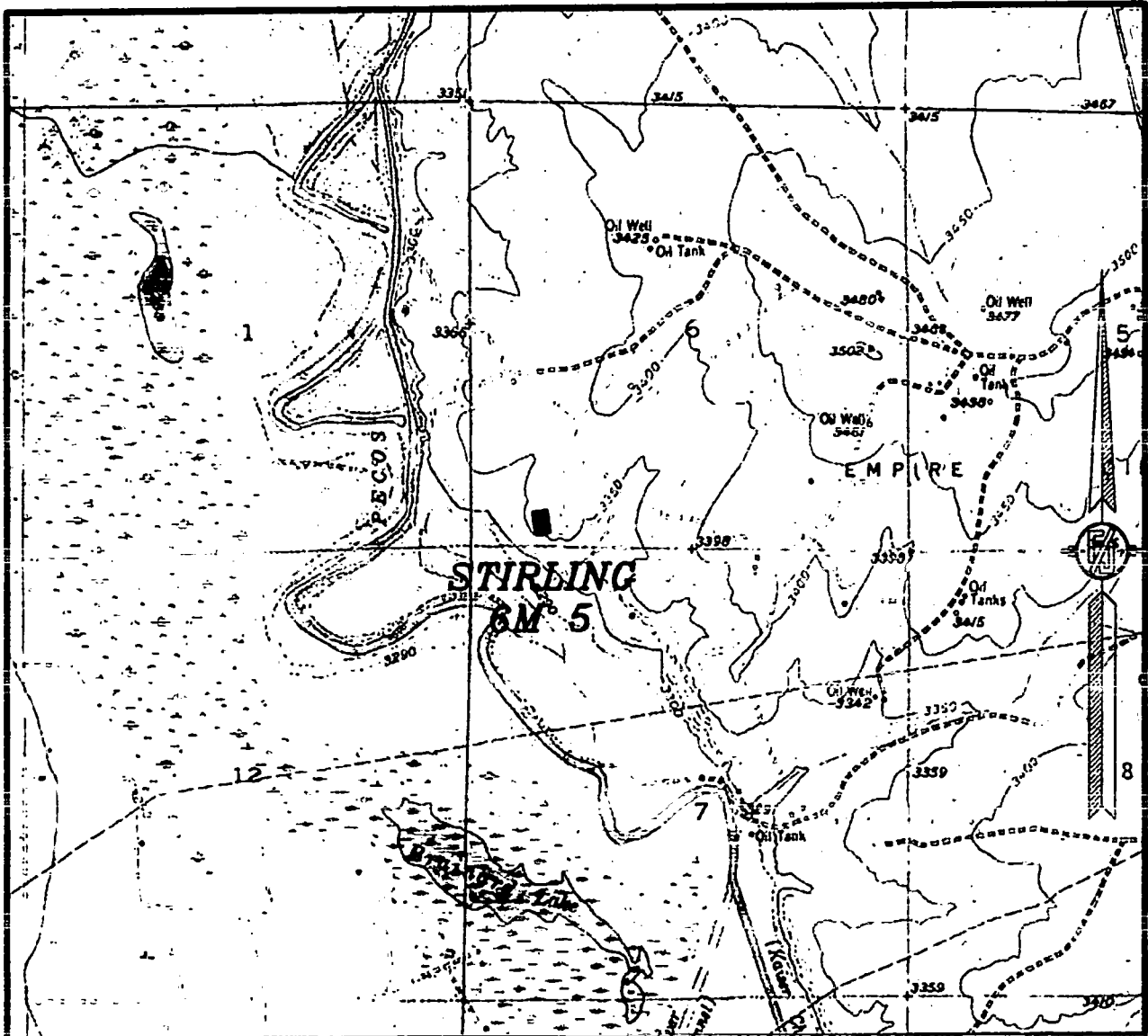
SEPTEMBER 22, 2018

SURVEY NO. 6529

MADRON SURVEYING, INC. 301 SOUTH CANAL CARLSBAD, NEW MEXICO

(575) 234-3341

SECTION 6, TOWNSHIP 18 SOUTH, RANGE 27 EAST, N.M.P.M.
EDDY COUNTY, STATE OF NEW MEXICO
LOCATION VERIFICATION MAP



USGS QUAD MAP:
SPRING LAKE

NOT TO SCALE

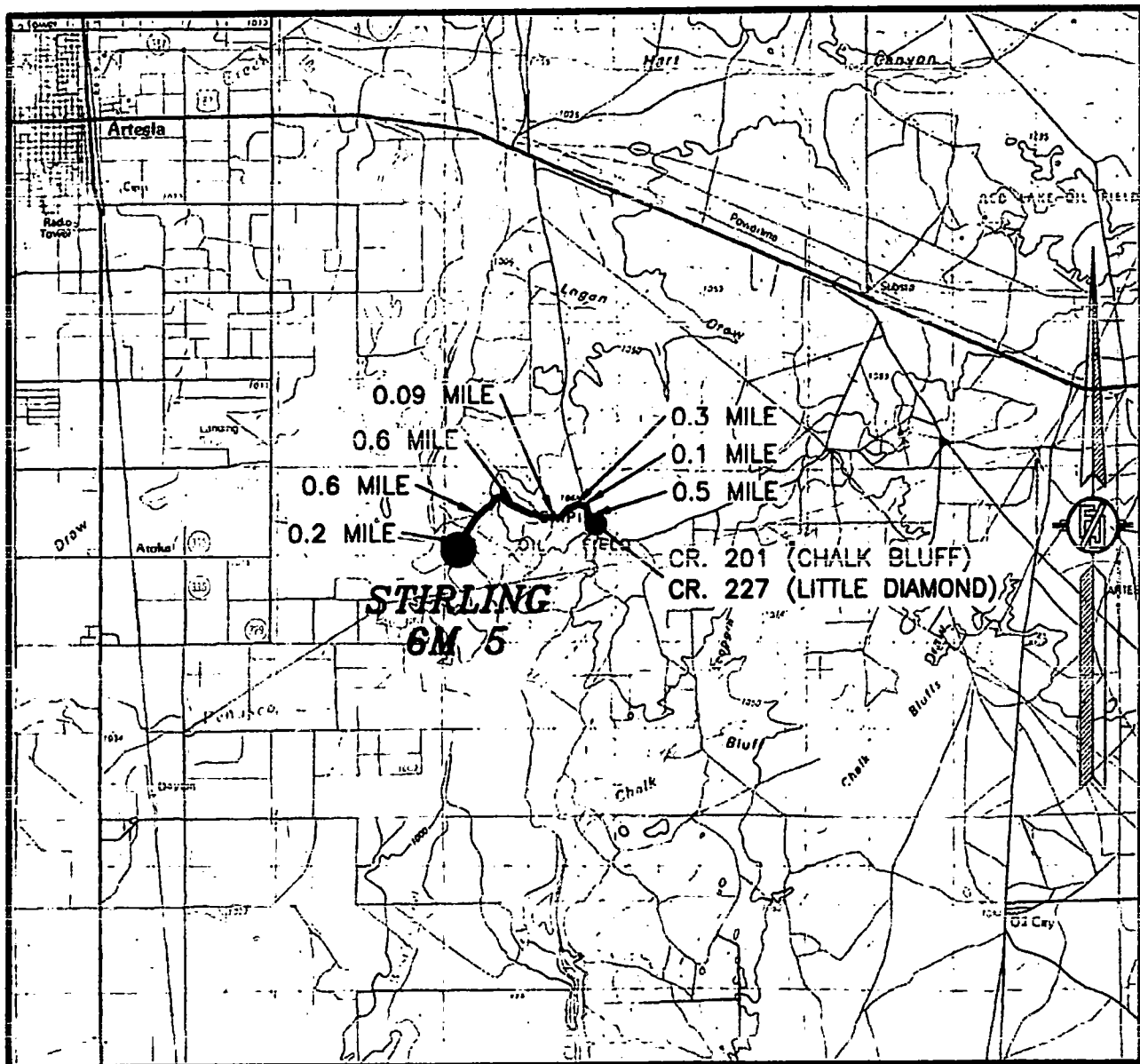
LIME ROCK RESOURCES II-A, L.P.
STIRLING 6M 5
LOCATED 330 FT. FROM THE SOUTH LINE
AND 825 FT. FROM THE WEST LINE OF
SECTION 6, TOWNSHIP 18 SOUTH,
RANGE 27 EAST, N.M.P.M.
EDDY COUNTY, STATE OF NEW MEXICO

SEPTEMBER 22, 2018

SURVEY NO. 6529

MADRON SURVEYING, INC. 301 SOUTH CANAL CARLSBAD, NEW MEXICO
(575) 734-3341

SECTION 6, TOWNSHIP 18 SOUTH, RANGE 27 EAST, N.M.P.M.
EDDY COUNTY, STATE OF NEW MEXICO
VICINITY MAP



DISTANCES IN MILES

NOT TO SCALE

DIRECTIONS TO LOCATION

FROM CALICHE CR. 201 (CHALK BLUFF) AND
CALICHE CR. 227 (LITTLE DIAMOND) GO NORTH ON
CR. 201 0.5 MILE, TURN LEFT AND GO WEST 0.1
MILE, BEND LEFT AND GO SOUTHWEST 0.3 MILE,
BEND RIGHT AND GO WEST 0.09 MILE, BEND
RIGHT AND GO NORTHWEST 0.6 MILE, TURN LEFT
AND GO SOUTHWEST 0.6 MILE, TURN RIGHT AND
GO SOUTHWEST 0.2 MILE TO THE SOUTHEAST
CORNER OF EXISTING PAD FOR THIS LOCATION.

LIME ROCK RESOURCES II-A, L.P.
STIRLING 6M 5

LOCATED 330 FT. FROM THE SOUTH LINE
AND 825 FT. FROM THE WEST LINE OF
SECTION 6, TOWNSHIP 18 SOUTH,
RANGE 27 EAST, N.M.P.M.
EDDY COUNTY, STATE OF NEW MEXICO

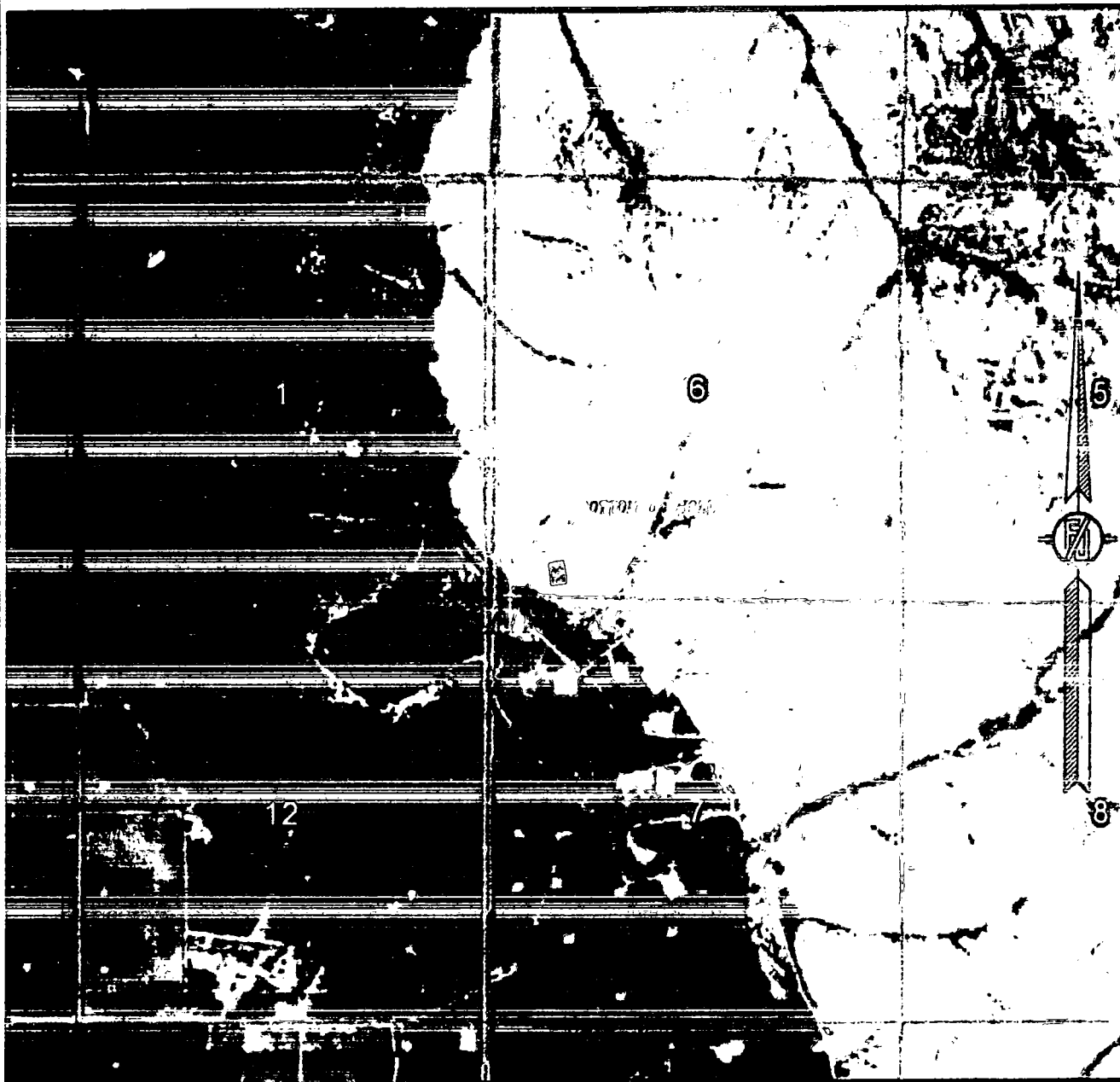
SEPTEMBER 22, 2018

SURVEY NO. 6529

MADRON SURVEYING, INC. 301 SOUTH CANAL
(575) 234-3341

CARLSBAD, NEW MEXICO

SECTION 6, TOWNSHIP 18 SOUTH, RANGE 27 EAST, N.M.P.M.
EDDY COUNTY, STATE OF NEW MEXICO
AERIAL PHOTO



NOT TO SCALE
AERIAL PHOTO:
GOOGLE EARTH
MAR. 2018

LIME ROCK RESOURCES II A, L.P.
STIRLING 6M 5

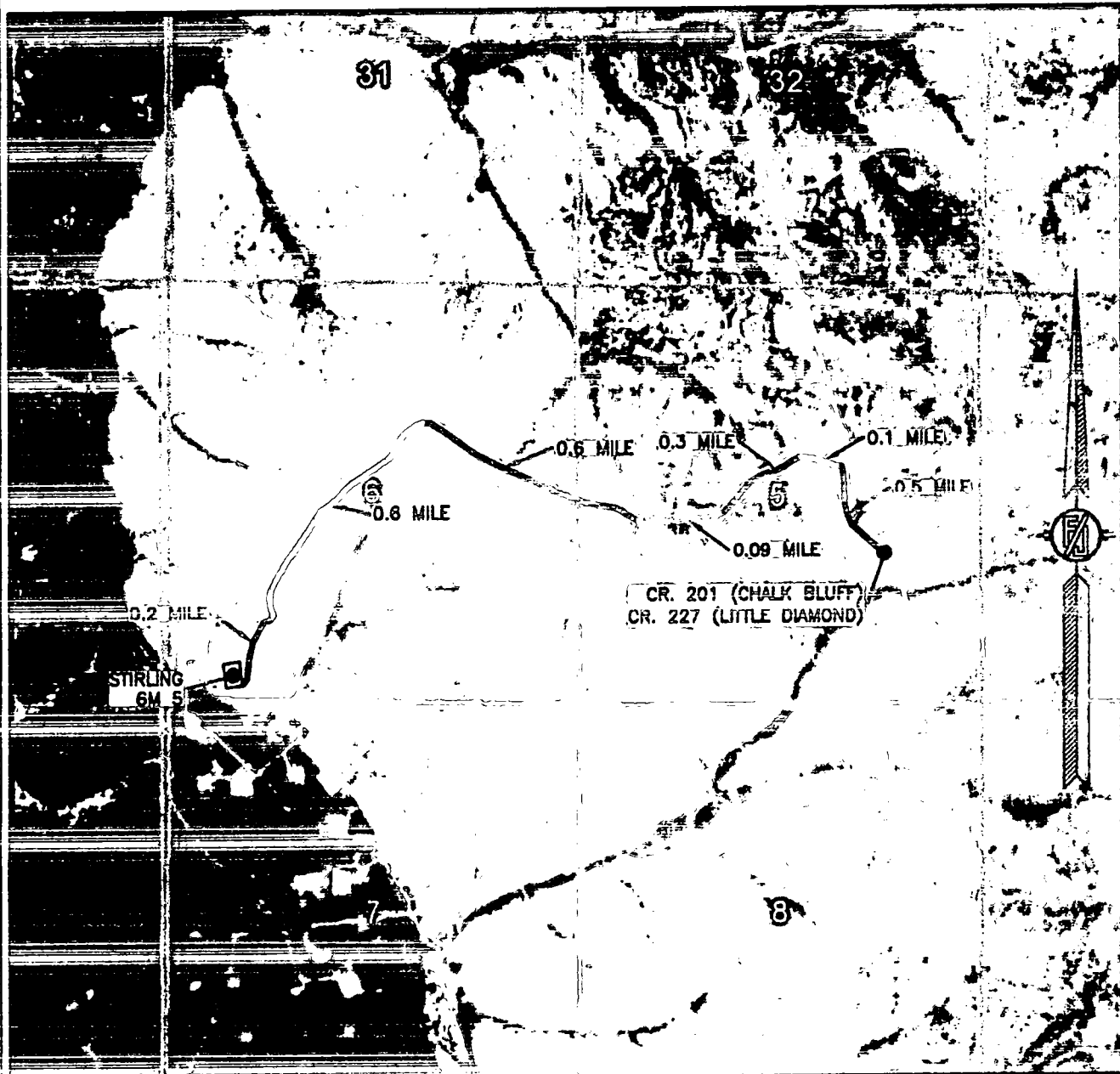
LOCATED 330 FT. FROM THE SOUTH LINE
AND 825 FT. FROM THE WEST LINE OF
SECTION 6, TOWNSHIP 18 SOUTH,
RANGE 27 EAST, N.M.P.M.
EDDY COUNTY, STATE OF NEW MEXICO

SEPTEMBER 22, 2018

SURVEY NO. 6529

MADRON SURVEYING, INC. 301 SOUTH CANAL (575) 234-3341 CARLSBAD, NEW MEXICO

SECTION 6, TOWNSHIP 18 SOUTH, RANGE 27 EAST, N.M.P.M.
EDDY COUNTY, STATE OF NEW MEXICO
AERIAL ACCESS ROUTE MAP



NOT TO SCALE
AERIAL PHOTO:
GOOGLE EARTH
MAR. 2016

LIME ROCK RESOURCES II-A, L.P.
STIRLING 6M 5

LOCATED 330 FT. FROM THE SOUTH LINE
AND 825 FT. FROM THE WEST LINE OF
SECTION 6, TOWNSHIP 18 SOUTH,
RANGE 27 EAST, N.M.P.M.
EDDY COUNTY, STATE OF NEW MEXICO

SEPTEMBER 22, 2018

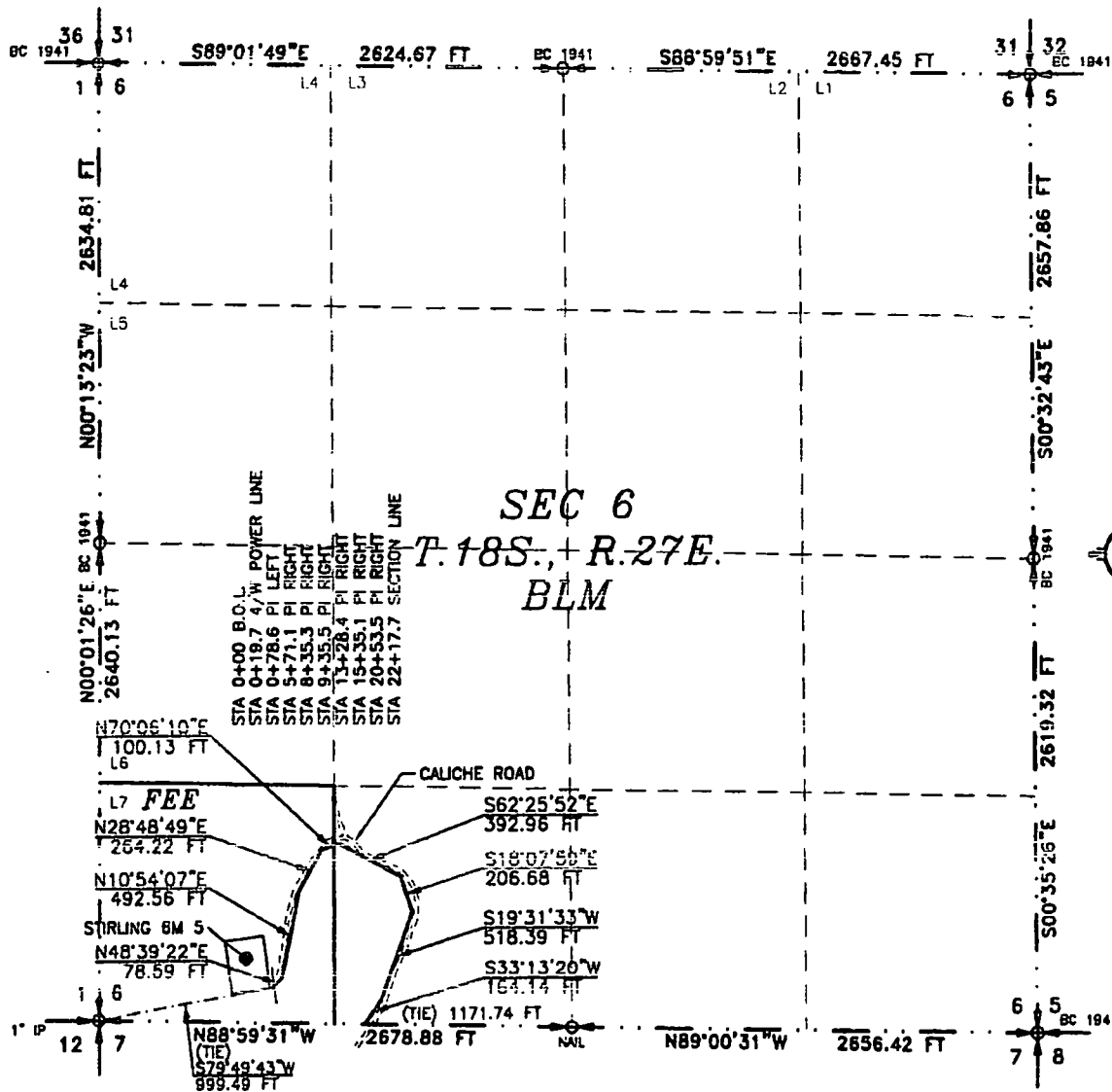
SURVEY NO. 6529

MADRON SURVEYING, INC. 301 SOUTH CANA CARLSBAD, NEW MEXICO
(505) 234-1161

FLOWLINE PLAT

4" POLY SURFACE PRODUCTION LINE FROM STIRLING 6M 5 TO STIRLING BATTERY

LIME ROCK RESOURCES II-A, L.P.
CENTERLINE SURVEY OF A PIPELINE CROSSING
SECTION 6, TOWNSHIP 18 SOUTH, RANGE 27 EAST, N.M.P.M.
EDDY COUNTY, STATE OF NEW MEXICO
SEPTEMBER 24, 2018



SEE NEXT SHEET (2-6) FOR DESCRIPTION

SURVEYOR CERTIFICATE

I, FILMON F. JARAMILLO, A NEW MEXICO PROFESSIONAL SURVEYOR NO. 12797, HEREBY CERTIFY THAT I HAVE CONDUCTED AND AM RESPONSIBLE FOR THIS SURVEY, THAT THIS SURVEY IS TRUE AND CORRECT TO THE BEST OF MY KNOWLEDGE AND BELIEF, AND THAT THIS SURVEY AND PLAT MEET THE MINIMUM STANDARDS FOR LAND SURVEYING IN THE STATE OF NEW MEXICO.

IN WITNESS WHEREOF, THIS CERTIFICATE IS EXECUTED AT CARLSBAD,

NEW MEXICO, THIS 30 DAY OF SEPTEMBER 2018

[Signature]
FILMON F. JARAMILLO, 12797

MADRON SURVEYING, INC.
301 SOUTH CANAL
CARLSBAD, NEW MEXICO 88220
Phone (575) 234-3341

SURVEY NO. 6529

GENERAL NOTES

- 1.) THE INTENT OF THIS ROUTE SURVEY IS TO ACQUIRE AN EASEMENT.
- 2.) BASIS OF BEARING AND DISTANCE IS NMSP EAST (NAD83) MODIFIED TO SURFACE COORDINATES. NAD 83 (FEET) AND NAVD 88 (FEET) COORDINATE SYSTEMS USED IN THE SURVEY.

SHEET: 1-6

MADRON SURVEYING, INC. CARLSBAD, NEW MEXICO

FLOWLINE PLAT

4" POLY SURFACE PRODUCTION LINE FROM STIRLING 6M 5 TO STIRLING BATTERY

LIME ROCK RESOURCES II-A, L.P.
CENTERLINE SURVEY OF A PIPELINE CROSSING
SECTION 6, TOWNSHIP 18 SOUTH, RANGE 27 EAST, N.M.P.M.
EDDY COUNTY, STATE OF NEW MEXICO
SEPTEMBER 24, 2018

DESCRIPTION

A STRIP OF LAND 30 FEET WIDE CROSSING FEE LAND AND BUREAU OF LAND MANAGEMENT LAND IN SECTION 6, TOWNSHIP 18 SOUTH, RANGE 27 EAST, N.M.P.M., EDDY COUNTY, STATE OF NEW MEXICO AND BEING 15 FEET EACH SIDE OF THE FOLLOWING DESCRIBED CENTERLINE SURVEY:

BEGINNING AT A POINT WITHIN LOT 7 OF SAID SECTION 6, TOWNSHIP 18 SOUTH, RANGE 27 EAST, N.M.P.M., WHENCE THE SOUTHWEST CORNER OF SAID SECTION 6, TOWNSHIP 18 SOUTH, RANGE 27 EAST, N.M.P.M. BEARS S79°49'43"W, A DISTANCE OF 999.49 FEET;
THENCE N48°39'22"E A DISTANCE OF 78.59 FEET TO AN ANGLE POINT OF THE LINE HEREIN DESCRIBED;
THENCE N10°54'07"E A DISTANCE OF 492.56 FEET TO AN ANGLE POINT OF THE LINE HEREIN DESCRIBED;
THENCE N28°48'49"E A DISTANCE OF 264.22 FEET TO AN ANGLE POINT OF THE LINE HEREIN DESCRIBED;
THENCE N70°06'10"E A DISTANCE OF 100.13 FEET TO AN ANGLE POINT OF THE LINE HEREIN DESCRIBED;
THENCE S62°25'52"E A DISTANCE OF 392.96 FEET TO AN ANGLE POINT OF THE LINE HEREIN DESCRIBED;
THENCE S18°07'59"E A DISTANCE OF 206.68 FEET TO AN ANGLE POINT OF THE LINE HEREIN DESCRIBED;
THENCE S19°31'33"W A DISTANCE OF 518.39 FEET TO AN ANGLE POINT OF THE LINE HEREIN DESCRIBED;
THENCE S33°13'20"W A DISTANCE OF 164.14 FEET THE TERMINUS OF THIS CENTERLINE SURVEY, WHENCE THE SOUTH QUARTER CORNER OF SAID SECTION 6, TOWNSHIP 18 SOUTH, RANGE 27 EAST, N.M.P.M. BEARS S88°59'31"E, A DISTANCE OF 1171.74 FEET;

SAID STRIP OF LAND BEING 2217.67 FEET OR 134.40 RODS IN LENGTH, CONTAINING 1.527 ACRES MORE OR LESS AND BEING ALLOCATED BY FORTIES AS FOLLOWS:

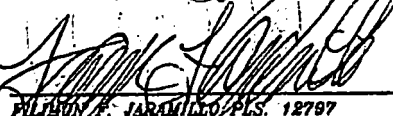
LOT 7	908.89 L.F.	55.08 RODS	0.626 ACRES	FEE
SE/4 SW/4	1308.78 L.F.	79.32 RODS	0.901 ACRES	BLM

SURVEYOR CERTIFICATE

I, FILMON F. JARAMILLO, A NEW MEXICO PROFESSIONAL SURVEYOR NO. 12797, HEREBY CERTIFY THAT I HAVE CONDUCTED AND AM RESPONSIBLE FOR THIS SURVEY, THAT THIS SURVEY IS TRUE AND CORRECT TO THE BEST OF MY KNOWLEDGE AND BELIEF, AND THAT THIS SURVEY AND PLAT MEET THE MINIMUM STANDARDS FOR LAND SURVEYING IN THE STATE OF NEW MEXICO.

IN WITNESS WHEREOF, THIS CERTIFICATE IS EXECUTED AT CARLSBAD,

NEW MEXICO, THIS 30 DAY OF SEPTEMBER 2018


FILMON F. JARAMILLO PLS. 12797

MADRON SURVEYING, INC.
301 SOUTH CANAL
CARLSBAD, NEW MEXICO 88220
Phone (575) 234-3341

SURVEY NO. 6529

GENERAL NOTES

1.) THE INTENT OF THIS ROUTE SURVEY IS TO ACQUIRE AN EASEMENT.

2.) BASIS OF BEARING AND DISTANCE IS NMSP EAST (NAD83) MODIFIED TO SURFACE COORDINATES. NAD 83 (FEET) AND NAVD 88 (FEET) COORDINATE SYSTEMS USED IN THE SURVEY.

SHEET: 2-6

MADRON SURVEYING, INC. 301 SOUTH CANAL (575) 234-3341 CARLSBAD, NEW MEXICO

FLOWLINE PLAT

4" POLY SURFACE PRODUCTION LINE FROM STIRLING 6M 6 TO STIRLING BATTERY

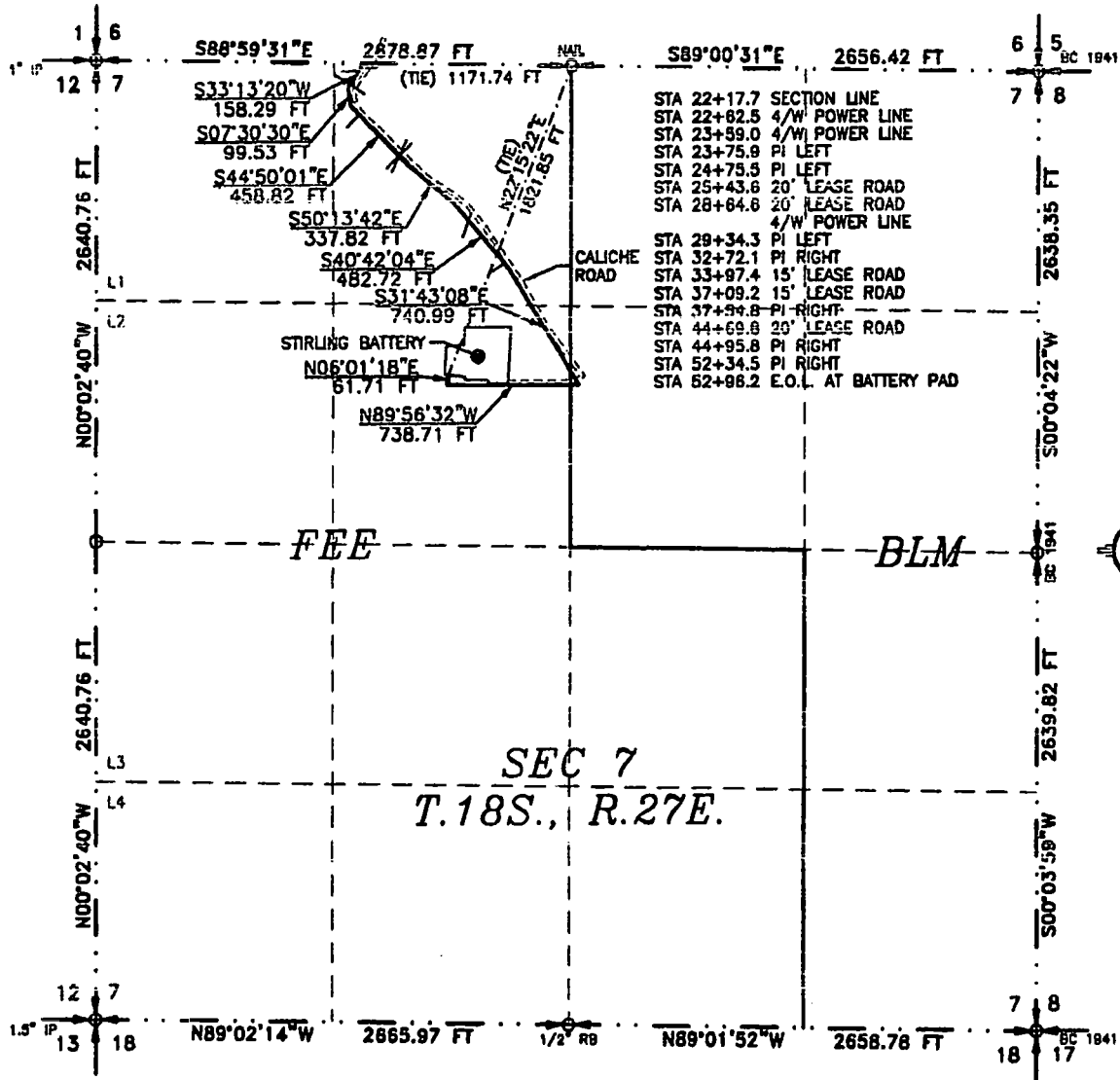
LIME ROCK RESOURCES II-A, L.P.

CENTERLINE SURVEY OF A PIPELINE CROSSING

SECTION 7, TOWNSHIP 18 SOUTH, RANGE 27 EAST, N.M.P.M.

EDDY COUNTY, STATE OF NEW MEXICO

SEPTEMBER 24, 2018



SEE NEXT SHEET (4-6) FOR DESCRIPTION

SURVEYOR CERTIFICATE

I, FILMON F. JARAMILLO, A NEW MEXICO PROFESSIONAL SURVEYOR NO. 12797, HEREBY CERTIFY THAT I HAVE CONDUCTED AND AM RESPONSIBLE FOR THIS SURVEY, THAT THIS SURVEY IS TRUE AND CORRECT TO THE BEST OF MY KNOWLEDGE AND BELIEF, AND THAT THIS SURVEY AND PLAT MEET THE MINIMUM STANDARDS FOR LAND SURVEYING IN THE STATE OF NEW MEXICO.

IN WITNESS WHEREOF, THIS CERTIFICATE IS EXECUTED AT CARLSBAD,

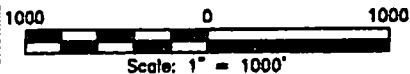
NEW MEXICO, THIS 30 DAY OF SEPTEMBER 2018

MADRON SURVEYING, INC.
301 SOUTH CANAL
CARLSBAD, NEW MEXICO 88220
Phone (575) 234-3341

FILMON F. JARAMILLO, PLS. 12797

SURVEY NO. 6529

MADRON SURVEYING, INC. 301 SOUTH CANAL (575) 234-3341 CARLSBAD, NEW MEXICO



GENERAL NOTES

1.) THE INTENT OF THIS ROUTE SURVEY IS TO ACQUIRE AN EASEMENT.

2.) BASIS OF BEARING AND DISTANCE IS NMSP EAST (NAD83) MODIFIED TO SURFACE COORDINATES. NAD 83 (FEET) AND NAVD 88 (FEET) COORDINATE SYSTEMS USED IN THE SURVEY.

SHEET: 3-6

FLOWLINE PLAT

4" POLY SURFACE PRODUCTION LINE FROM STIRLING 6M 5 TO STIRLING BATTERY

LIME ROCK RESOURCES II-A, L.P.
CENTERLINE SURVEY OF A PIPELINE CROSSING
SECTION 7, TOWNSHIP 18 SOUTH, RANGE 27 EAST, N.M.P.M.
EDDY COUNTY, STATE OF NEW MEXICO
SEPTEMBER 24, 2018

DESCRIPTION

A STRIP OF LAND 30 FEET WIDE CROSSING FEE LAND AND BUREAU OF LAND MANAGEMENT LAND IN SECTION 7, TOWNSHIP 18 SOUTH, RANGE 27 EAST, N.M.P.M., EDDY COUNTY, STATE OF NEW MEXICO AND BEING 15 FEET EACH SIDE OF THE FOLLOWING DESCRIBED CENTERLINE SURVEY:

BEGINNING AT A POINT WITHIN THE NE/4 NW/4 OF SAID SECTION 7, TOWNSHIP 18 SOUTH, RANGE 27 EAST, N.M.P.M., WHENCE THE NORTH QUARTER CORNER OF SAID SECTION 7, TOWNSHIP 18 SOUTH, RANGE 27 EAST, N.M.P.M. BEARS S88°59'31"E, A DISTANCE OF 1171.74 FEET;
THENCE S33°13'20"W A DISTANCE OF 158.29 FEET TO AN ANGLE POINT OF THE LINE HEREIN DESCRIBED;
THENCE S07°30'30"E A DISTANCE OF 99.53 FEET TO AN ANGLE POINT OF THE LINE HEREIN DESCRIBED;
THENCE S44°50'01"E A DISTANCE OF 458.82 FEET TO AN ANGLE POINT OF THE LINE HEREIN DESCRIBED;
THENCE S50°13'42"E A DISTANCE OF 337.82 FEET TO AN ANGLE POINT OF THE LINE HEREIN DESCRIBED;
THENCE S40°42'04"E A DISTANCE OF 482.72 FEET TO AN ANGLE POINT OF THE LINE HEREIN DESCRIBED;
THENCE S31°43'08"E A DISTANCE OF 740.99 FEET TO AN ANGLE POINT OF THE LINE HEREIN DESCRIBED;
THENCE N89°56'32"W A DISTANCE OF 738.71 FEET TO AN ANGLE POINT OF THE LINE HEREIN DESCRIBED;
THENCE N06°01'18"E A DISTANCE OF 61.71 FEET THE TERMINUS OF THIS CENTERLINE SURVEY, WHENCE THE NORTH QUARTER CORNER OF SAID SECTION 7, TOWNSHIP 18 SOUTH, RANGE 27 EAST, N.M.P.M. BEARS N22°15'22"E, A DISTANCE OF 1821.85 FEET;

SAID STRIP OF LAND BEING 3078.59 FEET OR 186.58 RODS IN LENGTH, CONTAINING 2.120 ACRES MORE OR LESS AND BEING ALLOCATED BY FORTIES AS FOLLOWS:

NE/4 NW/4	1769.45 L.F.	107.24 RODS	1.219 ACRES	FEE
SE/4 NW/4	1178.41 L.F.	71.42 RODS	0.812 ACRES	FEE
SW/4 NE/4	130.73 L.F.	7.92 RODS	0.090 ACRES	BLM

SURVEYOR CERTIFICATE

I, FILMON F. JARAMILLO, A NEW MEXICO PROFESSIONAL SURVEYOR NO. 12787, HEREBY CERTIFY THAT I HAVE CONDUCTED AND AM RESPONSIBLE FOR THIS SURVEY, THAT THIS SURVEY IS TRUE AND CORRECT TO THE BEST OF MY KNOWLEDGE AND BELIEF, AND THAT THIS SURVEY AND PLAT MEET THE MINIMUM STANDARDS FOR LAND SURVEYING IN THE STATE OF NEW MEXICO.

IN WITNESS WHEREOF, THIS CERTIFICATE IS EXECUTED AT CARLSBAD, NEW MEXICO, THIS 30 DAY OF SEPTEMBER 2018

GENERAL NOTES

1.) THE INTENT OF THIS ROUTE SURVEY IS TO ACQUIRE AN EASEMENT.

2.) BASIS OF BEARING AND DISTANCE IS NMSP EAST (NAD83) MODIFIED TO SURFACE COORDINATES. NAD 83 (FEET) AND NAVD 88 (FEET) COORDINATE SYSTEMS USED IN THE SURVEY.

SHEET: 4-6

MADRON SURVEYING, INC. 301 SOUTH CANAL CARLSBAD, NEW MEXICO

MADRON SURVEYING, INC.
301 SOUTH CANAL
CARLSBAD, NEW MEXICO 88220
Phone (575) 234-3341

SURVEY NO. 6529

FILMON F. JARAMILLO PLS. 12787
301 SOUTH CANAL
(575) 234-3341

FLOWLINE PLAT

4" POLY SURFACE PRODUCTION LINE FROM STIRLING 6M 5 TO STIRLING BATTERY

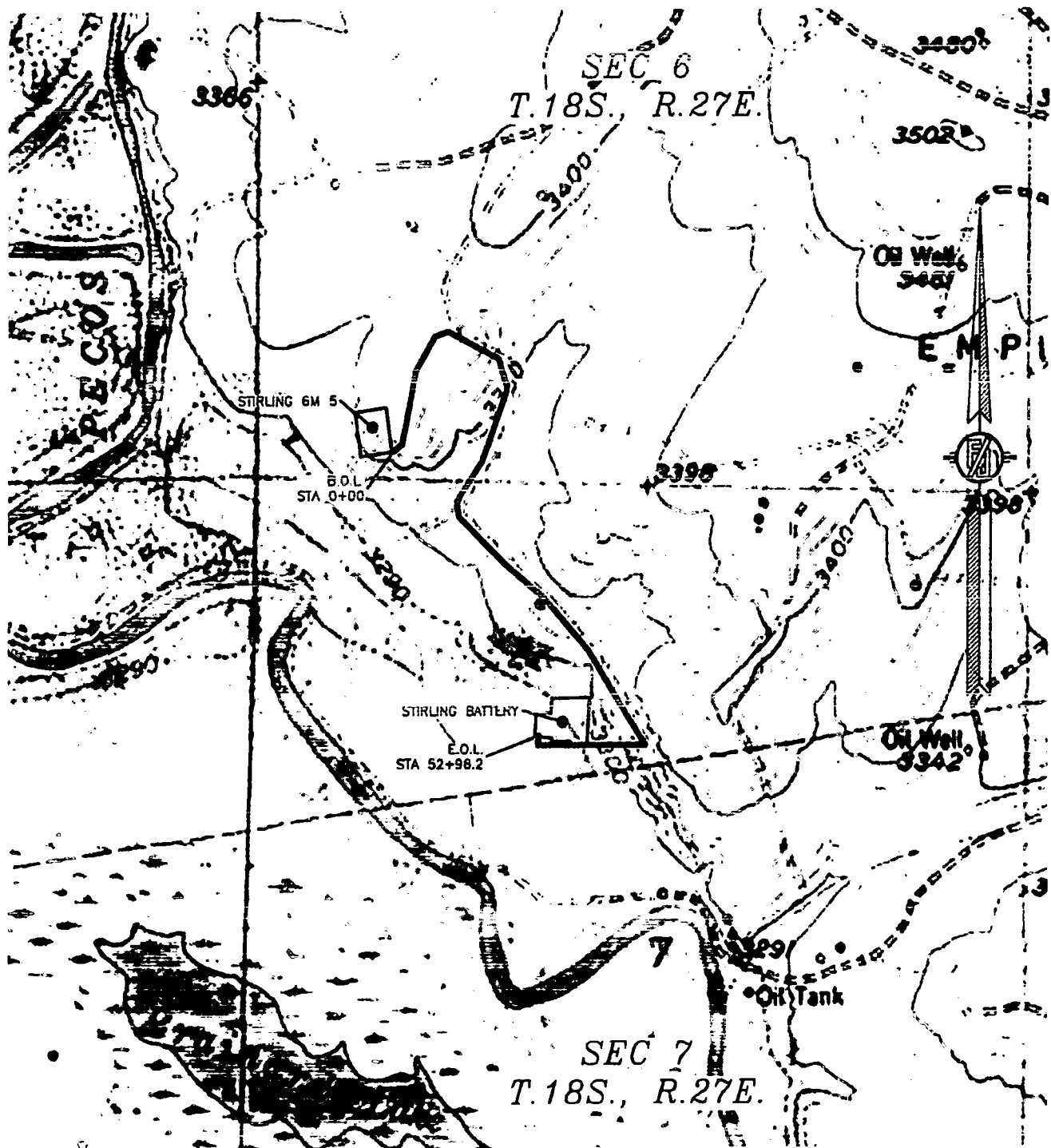
LIME ROCK RESOURCES II-A, L.P.

CENTERLINE SURVEY OF A PIPELINE CROSSING

SECTIONS 6 & 7, TOWNSHIP 18 SOUTH, RANGE 27 EAST, N.M.P.M.

EDDY COUNTY, STATE OF NEW MEXICO

SEPTEMBER 24, 2018



SHEET: 5-6

SURVEY NO. 6529

MADRON SURVEYING, INC. 301 SOUTH CANA. (575) 234-3341 CARLSBAD, NEW MEXICO

FLOWLINE PLAT

4" POLY SURFACE PRODUCTION LINE FROM STIRLING 6M 5 TO STIRLING BATTERY

**LIME ROCK RESOURCES II-A, L.P.
CENTERLINE SURVEY OF A PIPELINE CROSSING
SECTIONS 6 & 7, TOWNSHIP 18 SOUTH, RANGE 27 EAST, N.M.P.M.
EDDY COUNTY, STATE OF NEW MEXICO
SEPTEMBER 24, 2018**

