

UNITED STATES
DEPARTMENT OF THE INTERIOR
BUREAU OF LAND MANAGEMENT
Carlsbad Field Office

FORM APPROVED
OMB NO. 1004-0137
Expires: January 31, 2018

SUNDRY NOTICES AND REPORTS ON WELLS
Do not use this form for proposals to drill or to re-enter an abandoned well. Use form 3160-3 (APD) for such proposals.

5. Lease Serial No.
NMNM02862

6. If Indian, Allottee or Tribe Name

SUBMIT IN TRIPLICATE - Other instructions on page 2

7. If Unit or CA/Agreement, Name and/or No.
891000303X

1. Type of Well

☒ Oil Well ☐ Gas Well ☐ Other

8. Well Name and No.
POKER LAKE UNIT 23 DTD 108H

2. Name of Operator
BOPCO LP

Contact: STEPHANIE RABADUE
E-Mail: stephanie_rabadue@xtoenergy.com

9. API Well No.
30-015-42452-00-X1

3a. Address
6401 HOLIDAY HILL RD BLDG 5 SUITE 200
MIDLAND, TX 79707

3b. Phone No. (include area code)
Ph: 432-620-6714

10. Field and Pool or Exploratory Area
WILDCAT

4. Location of Well (Footage, Sec., T., R., M., or Survey Description)

Sec 23 T24S R30E NENE 0590FNL 1020FEL
32.123201 N Lat, 103.504484 W Lon

11. County or Parish, State
EDDY COUNTY, NM

12. CHECK THE APPROPRIATE BOX(ES) TO INDICATE NATURE OF NOTICE, REPORT, OR OTHER DATA

TYPE OF SUBMISSION	TYPE OF ACTION			
<input checked="" type="checkbox"/> Notice of Intent	<input type="checkbox"/> Acidize	<input type="checkbox"/> Deepen	<input type="checkbox"/> Production (Start/Resume)	<input type="checkbox"/> Water Shut-Off
<input type="checkbox"/> Subsequent Report	<input type="checkbox"/> Alter Casing	<input type="checkbox"/> Hydraulic Fracturing	<input type="checkbox"/> Reclamation	<input type="checkbox"/> Well Integrity
<input type="checkbox"/> Final Abandonment Notice	<input type="checkbox"/> Casing Repair	<input type="checkbox"/> New Construction	<input type="checkbox"/> Recomplete	<input checked="" type="checkbox"/> Other
	<input type="checkbox"/> Change Plans	<input type="checkbox"/> Plug and Abandon	<input type="checkbox"/> Temporarily Abandon	Change to Original A PD
	<input type="checkbox"/> Convert to Injection	<input type="checkbox"/> Plug Back	<input type="checkbox"/> Water Disposal	

13. Describe Proposed or Completed Operation: Clearly state all pertinent details, including estimated starting date of any proposed work and approximate duration thereof. If the proposal is to deepen directionally or recompleat horizontally, give subsurface locations and measured and true vertical depths of all pertinent markers and zones. Attach the Bond under which the work will be performed or provide the Bond No. on file with BLM/BIA. Required subsequent reports must be filed within 30 days following completion of the involved operations. If the operation results in a multiple completion or recompleat in a new interval, a Form 3160-4 must be filed once testing has been completed. Final Abandonment Notices must be filed only after all requirements, including reclamation, have been completed and the operator has determined that the site is ready for final inspection.

BOPCO, L.P respectfully requests an additional battery located on an existing approved well pad in the SENE quarter of Section 22-24S-30E, a 30? buried pipeline corridor with a 30? temporary easement through Poker Lake Unit Sections 22 and 23-T24S-R30E, beginning at the proposed Poker Lake Unit 23 battery in the SENE quarter of Section 22-24S-30E and ending in the NENE quarter of Section 23-24S-30E at the existing PLU CVX JV BS 26H battery. Additionally, BOPCO, L.P. respectfully requests a second buried line corridor for produced water disposal beginning in the SENE quarter of Section 23-24S-30E and ending in the NENE quarter of Section 23-24S-30E.

Proposed Route/Line 1: HP Oil & HP Gas (in same corridor) - 7229.32'
Buried HP Oil Line: 6? Steel, Operating Psi: 1440, Burst: 1800psi &
Buried HP Gas Line: 12? Steel, Operating Psi: 1440, Burst: 1800psi

RECEIVED

NOV 06 2018

GC 11-7-18
Accepted for record - NMNM02862

DISTRICT II-ARTESIA O.C.D.

14. I hereby certify that the foregoing is true and correct.

Electronic Submission #406983 verified by the BLM Well Information System

For BOPCO LP, sent to the Carlsbad

Committed to AFMSS for processing by PRISCILLA PEREZ on 03/08/2018 (18PP1262SE)

Name (Printed/Typed) STEPHANIE RABADUE

Title REGULATORY ANALYST

Signature (Electronic Submission)

Date 03/08/2018

THIS SPACE FOR FEDERAL OR STATE OFFICE USE

Approved By

Title

Date

Conditions of approval, if any, are attached. Approval of this notice does not warrant or certify that the applicant holds legal or equitable title to those rights in the subject lease which would entitle the applicant to conduct operations thereon.

Office

Title 18 U.S.C. Section 1001 and Title 43 U.S.C. Section 1212, make it a crime for any person knowingly and willfully to make to any department or agency of the United States any false, fictitious or fraudulent statements or representations as to any matter within its jurisdiction.

(Instructions on page 2)

** BLM REVISED ** BLM REVISED ** BLM REVISED ** BLM REVISED ** BLM REVISED **

Additional data for EC transaction #406983 that would not fit on the form

32. Additional remarks, continued

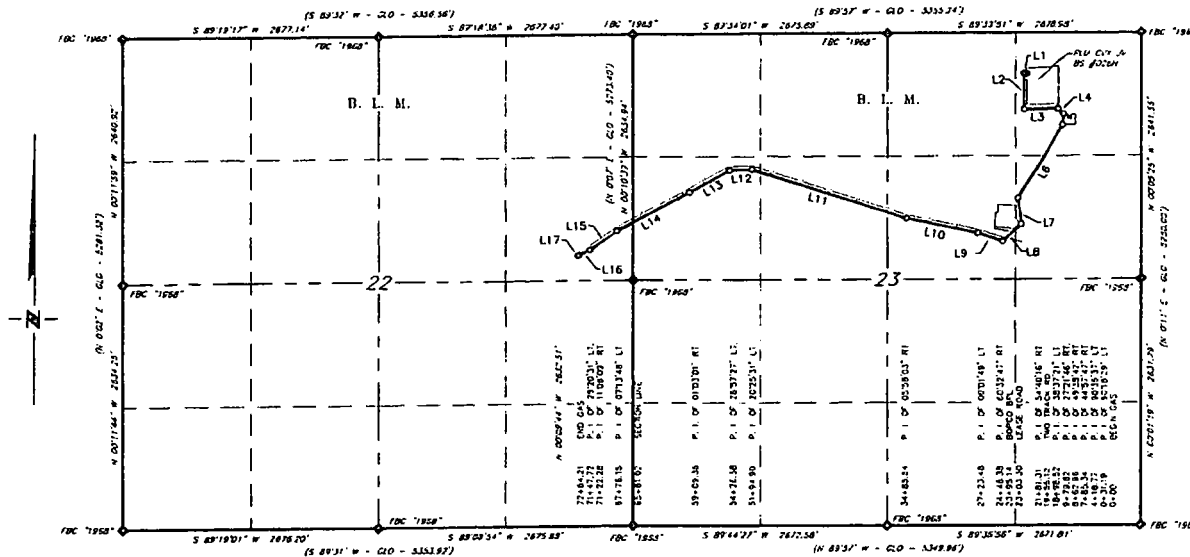
Proposed Route/Line 2: LP Produced Water Tie-In - 2886.45'
Buried Produced Water Line: 10" Poly, Operating Psi: 125, Burst: 160psi.

See attached plats for full route description.

See attached image for CTB proposal.

See attached pipeline development plan and spec sheet for additional specifics.

XTO ENERGY, INC.
OVERALL OF PROPOSED BIG SINKS 12" GAS PIPELINE
SECTIONS 22 & 23, T24S, R30E,
N. M. P. M., EDDY CO., NEW MEXICO



LINE TABLE

LINE	BEARING	LENGTH	LINE	BEARING	LENGTH	LINE	BEARING	LENGTH
L1	N 89°50'44" W	31.19'	L7	S 07°24'56" E	282.79'	L13	S 60°21'24" W	482.78'
L2	S 00°09'14" E	387.58'	L8	S 47°15'20" W	267.07'	L14	S 61°24'26" W	866.79'
L3	N 89°14'09" E	366.57'	L9	N 72°11'53" W	275.10'	L15	S 54°10'37" W	346.13'
L4	S 45°48'03" E	77.62'	L10	N 78°13'42" W	756.06'	L16	N 65°18'46" W	125.44'
L5	S 03°50'39" W	116.86'	L11	N 72°15'38" W	1,706.36'	L17	S 35°58'15" W	16.49'
L6	S 31°12'25" W	918.70'	L12	S 87°18'51" W	231.68'			

SCALE: 1" = 1500'
0 750' 1500'

BEARINGS ARE GRID NAD 83
NM EAST
DISTANCES ARE HORIZ. GROUND.

LEGEND

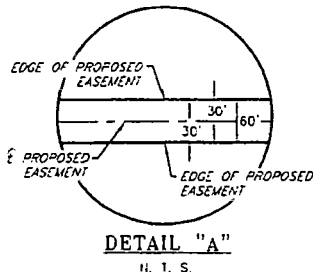
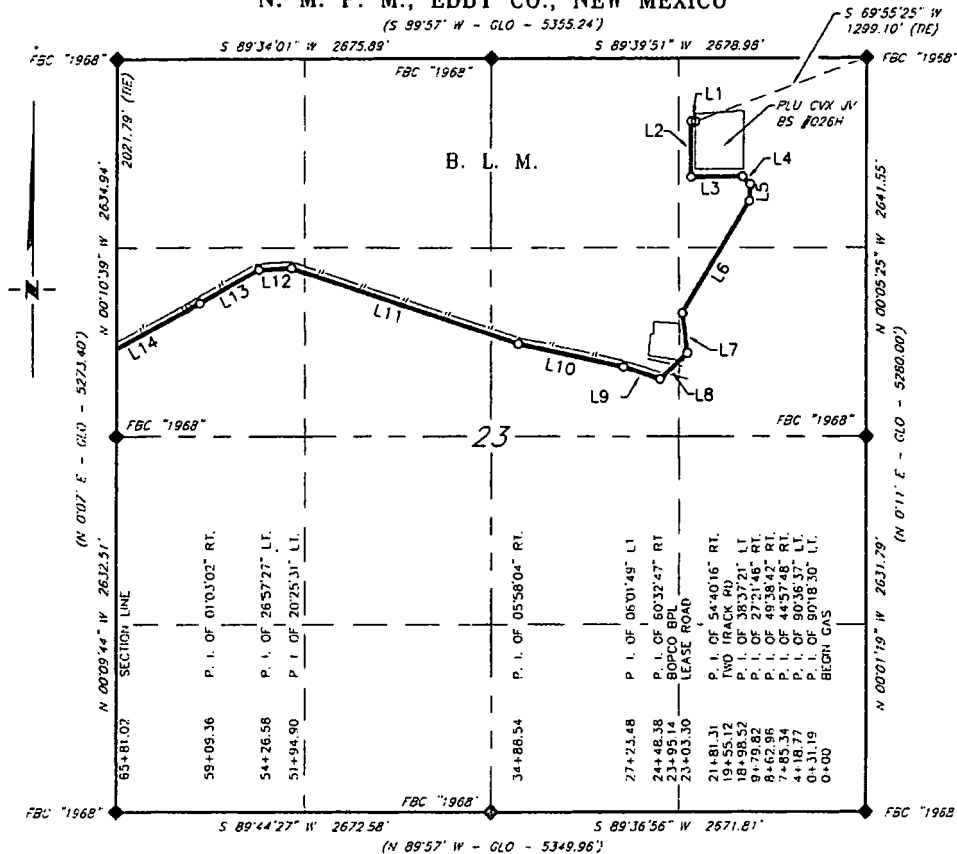
- () RECORD DATA - GLO
- ◆ FOUND MONUMENT AS NOTED
- PROPOSED GAS PIPELINE

Copyright 2016 - All Rights Reserved

<div><div></div><div><div></div><div></div><div></div><div></div><div></div><div></div><div></div><div></div><div></div><div></div><div></div><div></div><div></div><div></div><div></div><div></div><div></div><div></div><div></div><div></div><div></div><div></div><div></div><div></div><div></div><div></div><div></div><div></div><div></div><div></div><div></div><div></div><div></div><div></div><div></div><div></div><div></div><div></div><div></div><div></div><div></div><div></div><div></div><div></div><div></div><div></div><div></div><div></div><div></div><div></div><div></div><div></div><div></div><div></div><div></div><div></div><div></div><div></div><div></div><div></div><div></div><div></div><div></div><div></div><div></div><div></div><div></div><div></div><div></div><div></div><div></div><div></div><div></div><div></div><div></div><div></div><div></div><div></div><div></div><div></div><div></div><div></div><div></div><div></div><div></div><div></div><div></div><div></div><div></div><div></div><div></div><div></div><div></div><div></div><div></div><div></div><div></div><div></div><div></div><div></div><div></div><div></div><div></div><div></div><div></div><div></div><div></div><div></div><div></div><div></div><div></div><div></div><div></div><div></div><div></div><div></div><div></div><div></div><div></div><div></div><div></div><div></div><div></div><div></div><div></div><div></div><div></div><div></div><div></div><div></div><div></div><div></div><div></div><div></div><div></div><div></div><div></div><div></div><div></div><div></div><div></div><div></div><div></div><div></div><div></div><div></div><div></div><div></div><div></div><div></div><div></div><div></div><div></div><div></div><div></div><div></div><div></div><div></div><div></div><div></div><div></div><div></div><div></div><div></div><div></div><div></div><div></div><div></div><div></div><div></div><div></div><div></div><div></div><div></div><div></div><div></div><div></div><div></div><div></div><div></div><div></div><div></div><div></div><div></div><div></div><div></div><div></div><div></div><div></div><div></div><div></div><div></div><div></div><div></div><div></div><div></div><div></div><div></div><div></div><div></div><div></div><div></div><div></div><div></div><div></div><div></div><div></div><div></div><div></div><div></div><div></div><div></div><div></div><div></div><div></div><div></div><div></div><div></div><div></div><div></div><div></div><div></div><div></div><div></div><div></div><div></div><div></div><div></div><div></div><div></div><div></div><div></div><div></div><div></div><div></div><div></div><div></div><div></div><div></div><div></div><div></div><div></div><div></div><div></div><div></div><div></div><div></div><div></div><div></div><div></div><div></div><div></div><div></div><div></div><div></div><div></div><div></div><div></div><div></div><div></div><div></div><div></div><div></div><div></div><div></div><div></div><div></div><div></div><div></div><div></div><div></div><div></div><div></div><div></div><div></div><div></div><div></div><div></div><div></div><div></div><div></div><div></div><div></div><div></div><div></div><div></div><div></div><div></div><div></div><div></div><div></div><div></div><div></div><div></div><div></div><div></div><div></div><div></div><div></div><div></div><div></div><div></div><div></div><div></div><div></div><div></div><div></div><div></div><div></div><div></div><div></div><div></div><div></div><div></div><div></div><div></div><div></div><div></div><div></div><div></div><div></div><div></div><div></div><div></div><div></div><div></div><div></div><div></div><div></div><div></div><div></div><div></div><div></div><div></div><div></div><div></div><div></div><div></div><div></div><div></div><div></div><div></div><div></div><div></div><div></div><div></div><div></div><div></div><div></div><div></div><div></div><div></div><div></div><div></div><div></div><div></div><div></div><div></div><div></div><div></div><div></div><div></div><div></div><div></div><div></div><div></div><div></div><div></div><div></div><div></div><div></div><div></div><div></div><div></div><div></div><div></div><div></div><div></div><div></div><div></div><div></div><div></div><div></div><div></div><div></div><div></div><div></div><div></div><div></div><div></div><div></div><div></div><div></div><div></div><div></div><div></div><div></div><div></div><div></div><div></div><div></div><div></div><div></div><div></div><div></div><div></div><div></div><div></div><div></div><div></div><div></div><div></div><div></div><div></div><div></div><div></div><div></div><div></div><div></div><div></div><div></div><div></div><div></div><div></div><div></div><div></div><div></div><div></div><div></div><div></div><div></div><div></div><div></div><div></div><div></div><div></div><div></div><div></div><div></div><div></div><div></div><div></div><div></div><div></div><div></div><div></div><div></div><div></div><div></div><div></div><div></div><div></div><div></div><div></div><div></div><div></div><div></div><div></div><div></div><div></div><div></div><div></div><div></div><div></div><div></div><div></div><div></div><div></div><div></div><div></div><div></div><div></div><div></div><div></div><div></div><div></div><div></div><div></div><div></div><div></div><div></div><div></div><div></div><div></div><div></div><div></div><div></div><div></div><div></div><div></div><div></div><div></div><div></div><div></div><div></div><div></div><div></div><div></div><div></div><div></div><div></div><div></div><div></div><div></div><div></div><div></div><div></div><div></div><div></div><div></div><div></div><div></div><div></div><div></div><div></div><div></div><div></div><div></div><div></div><div></div><div></div><div></div><div></div><div></div><div></div><div></div><div></div><div></div><div></div><div></div><div></div><div></div><div></div><div></div><div></div><div></div><div></div><div></div><div></div><div></div><div></div><div></div><div></div><div></div><div></div><div></div><div></div><div></div><div></div><div></div><div></div><div></div><div></div><div></div><div></div><div></div><div></div><div></div><div></div><div></div><div></div><div></div><div></div><div></div><div></div><div></div><div></div><div></div><div></div><div></div><div></div><div></div><div></div><div></div><div></div><div></div><div></div><div></div><div></div><div></div><div></div><div></div><div></div><div></div><div></div><div></div><div></div><div></div><div></div><div></div><div></div><div></div><div></div><div></div><div></div><div></div><div></div><div></div><div></div><div></div><div></div><div></div><div></div><div></div><div></div><div></div><div></div><div></div><div></div><div></div><div></div><div></div><div></div><div></div><div></div><div></div><div></div><div></div><div></div><div></div><div></div><div></div><div></div><div></div><div></div><div></div><div></div><div></div><div></div><div></div><div></div><div></div><div></div><div></div><div></div><div></div><div></div><div></div><div></div><div></div><div></div><div></div><div></div><div></div><div></div><div></div><div></div><div></div><div></div><div></div><div></div><div></div><div></div><div></div><div></div><div></div><div></div><div></div><div></div><div></div><div></div><div></div><div></div><div></div><div></div><div></div><div></div><div></div><div></div><div></div><div></div><div></div><div></div><div></div><div></div><div></div><div></div><div></div><div></div><div></div><div></div><div></div><div></div><div></div><div></div><div></div><div></div><div></div><div></div><div></div><div></div><div></div><div></div><div></div><div></div><div></div><div></div><div></div><div></div><div></div><div></div><div></div><div></div><div></div><div></div><div></div><div></div><div></div><div></div><div></div><div></div><div></div><div></div><div></div><div></div><div></div><div></div><div></div><div></div><div></div><div></div><div></div><div></div><div></div><div></div><div></div><div></div><div></div><div></div><div></div><div></div><div></div><div></div><div></div><div></div><div></div><div></div><div></div><div></div><div></div><div></div><div></div><div></div><div></div><div></div><div></div><div></div><div></div><div></div><div></div><div></div><div></div><div></div><div></div><div></div><div></div><div></div><div></div><div></div><div></div><div></div><div></div><div></div><div></div><div></div><div></div><div></div><div></div><div></div><div></div><div></div><div></div><div></div><div></div><div></div><div></div><div></div><div></div><div></div><div></div><div></div><div></div><div></div><div></div><div></div><div></div><div></div><div></div><div></div><div></div><div></div><div></div><div></div><div></div><div></div><div></div><div></div><div></div><div></div><div></div><div></div><div></div><div></div><div></div><div></div><div></div><div></div><div></div><div></div><div></div><div></div><div></div><div></div><div></div><div></div><div></div><div></div><div></div><div></div><div></div><div></div><div></div><div></div><div></div><div></div><div></div><div></div><div></div><div></div><div></div><div></div><div></div><div></div><div></div><div></div><div></div><div></div><div></div><div></div><div></div><div></div><div></div><div></div><div></div><div></div><div></div><div></div><div></div><div></div><div></div><div></div><div></div><div></div><div></div><div></div><div></div><div></div><div></div><div></div><div></div><div></div><div></div><div></div><div></div><div></div><div></div><div></div><div></div><div></div><div></div><div></div><div></div><div></div><div></div><div></div><div></div><div></div><div></div><div></div><div></div><div></div><div></div><div></div><div></div><div></div><div></div><div></div><div></div><div></div><div></div><div></div><div></div><div></div><div></div><div></div><div></div><div></div><div></div><div></div><div></div><div></div><div></div><div></div><div></div><div></div><div></div><div></div><div></div><div></div><div></div><div></div><div></div><div></div><div></div><div></div><div></div><div></div><div></div><div></div><div></div><div></div><div></div><div></div><div></div><div></div><div></div><div></div><div></div><div></div><div></div><div></div><div></div><div></div><div></div><div></div><div></div><div></div><div></div><div></div><div></div><div></div><div></div><div></div><div></div><div></div><div></div><div></div><div></div><div></div><div></div><div></div><div></div><div></div><div></div><div></div><div></div><div></div><div></div><div></div><div></div><div></div><div></div><div></div><div></div><div></div><div></div><div></div><div></div><div></div><div></div><div></div><div></div><div></div><div></div><div></div><div></div><div></div><div></div><div></div><div></div><div></div><div></div><div></div><div></div><div></div><div></div><div></div><div></div><div></div><div></div><div></div><div></div><div></div><div></div><div></div><div></div><div></div><div></div><div></div><div></div><div></div><div></div><div></div><div></div><div></div><div></div><div></div><div></div><div></div><div></div><div></div><div></div><div></div><div></div><div></div><div></div><div></div><div></div><div></div><div></div><div></div><div></div><div></div><div></div><div></div><div></div><div></div><div></div><div></div><div></div><div></div><div></div><div></div><div></div><div></div><div></div><div></div><div></div><div></div><div></div><div></div><div></div><div></div><div></div><div></div><div></div><div></div><div></div><div></div><div></div><div></div><div></div><div></div><div></div><div></div><div></div><div></div><div></div><div></div><div></div><div></div><div></div><div></div><div></div><div></div><div></div><div></div><div></div><div></div><div></div><div></div><div></div><div></div><div></div><div></div><div></div><div></div><div></div><div></div><div></div><div></div><div></div><div></div><div></div><div></div><div></div><div></div><div></div><div></div><div></div><div></div><div></div><div></div><div></div><div></div><div></div><div></div><div></div><div></div><div></div><div></div><div></div><div></div><div></div><div></div><div></div><div></div><div></div><div></div><div></div><div></div><div></div><div></div><div></div><div></div><div></div><div></div><div></div><div></div><div></div><div></div><div></div><div></div><div></div><div></div><div></div><div></div><div></div><div></div><div></div><div></div><div></div><div></div><div></div><div></div><div></</div></div></div>			
--	--	--	--

305 W. BROADWAY ST., HOBBS, NM 88240 (505) 964-8200

XTO ENERGY, INC.
PROPOSED BIG SINKS 12" GAS PIPELINE
SECTION 23, T24S, R30E,
N. M. P. M., EDDY CO., NEW MEXICO



SCALE: 1" = 1000'
 0 500' 1000'

BEARINGS ARE GRID NAD 83
 NM EAST
 DISTANCES ARE HORIZ. GROUND.

LEGEND
 () RECORD DATA - GLO
 ♦ FOUND MONUMENT
 AS NOTED
 — PROPOSED GAS PIPELINE

LINE TABLE		
LINE	BEARING	LENGTH
L1	N 89°50'44" W	31.19'
L2	S 00°09'14" E	387.58'
L3	N 89°14'09" E	366.57'
L4	S 45°48'03" E	77.62'
L5	S 03°50'39" W	116.86'
L6	S 31°12'25" W	918.70'
L7	S 07°24'56" E	282.79'
L8	S 47°15'20" W	267.07'
L9	N 72°11'53" W	275.10'
L10	N 78°13'42" W	765.06'
L11	N 72°15'38" W	1,706.36'
L12	S 87°18'51" W	231.63'
L13	S 60°21'24" W	482.78'
L14	S 61°24'26" W	671.66'

I, R. M. Howett, a N. M. Professional Surveyor, hereby certify that I prepared this plat from an actual survey made on the ground under my direct supervision, said survey and plat meet the Min. Stds. for Land Surveying in the State of N. M. and are true and correct to the best of my knowledge and belief.

Robert M. Howett
 Robert M. Howett NM PS 19680



Copyright 2016 - All Rights Reserved

NO.	REVISION	DATE
JOB NO.:	LS1801021	
DWG. NO.:	2-1801021	

RRC

308 W. BROADWAY ST., HOBBS, NM 88240 (575) 964-8200

SCALE: 1" = 1000'
DATE: 1-9-2018
SURVEYED BY: JF/BK
DRAWN BY: CMJ
APPROVED BY: RMH
SHEET: 2 OF 4

XTO ENERGY, INC.
PROPOSED BIG SINKS 12" GAS PIPELINE
SECTION 23, T24S, R30E,
N. M. P. M., EDDY CO., NEW MEXICO

DESCRIPTION

A strip of land 60 feet wide, being 6,581.02 feet or 398.850 rods in length, lying in Section 23, Township 24 South, Range 30 East, N. M. P. M., Eddy County, New Mexico, being 30 feet left and 30 feet right of the following described survey of a centerline across B. L. M. land:

BEGINNING at Engr. Sta. 0+00, a point in the Northeast quarter of Section 23, which bears, S 69°55'25" W, 1,299.10 feet from a brass cap, stamped "1968", found for the Northeast corner of Section 23;

Thence N 89°50'44" W, 31.19 feet, to Engr. Sta. 0+31.19, a P. I. of 90°18'30" left;

Thence S 00°09'14" E, 387.58 feet, to Engr. Sta. 4+18.77, a P. I. of 90°36'37" left;

Thence N 89°14'09" E, 366.57 feet, to Engr. Sta. 7+85.34, a P. I. of 44°57'48" right;

Thence S 45°48'03" E, 77.62 feet, to Engr. Sta. 8+62.96, a P. I. of 49°38'42" right;

Thence S 03°50'39" W, 116.86 feet, to Engr. Sta. 9+79.82, a P. I. of 27°21'46" right;

Thence S 31°12'25" W, 918.70 feet, to Engr. Sta. 18+98.52, a P. I. of 38°37'21" left;

Thence S 07°24'56" E, 282.79 feet, to Engr. Sta. 21+81.31, a P. I. of 54°40'16" right;

Thence S 47°15'20" W, 267.07 feet, to Engr. Sta. 24+48.38, a P. I. of 60°32'47" right;

Thence N 72°11'53" W, 275.10 feet, to Engr. Sta. 27+23.48, a P. I. of 06°01'49" left;

Thence N 78°13'42" W, 765.06 feet, to Engr. Sta. 34+88.54, a P. I. of 05°58'04" right;

Thence N 72°15'38" W, 1,706.36 feet, to Engr. Sta. 51+94.90, a P. I. of 20°25'31" left;

Thence S 87°18'51" W, 231.68 feet, to Engr. Sta. 54+26.58, a P. I. of 26°57'27" left;


Thence S 60°21'24" W, 482.78 feet, to Engr. Sta. 59+09.36, a P. I. of 01°03'02" right;

Thence S 61°24'26" W, 671.66 feet, to Engr. Sta. 65+81.02, to a point on the West line of Section 23, which bears, S 00°10'39" E, 2,021.79 feet from a brass cap, stamped "1968", found for the Northwest corner of Section 23.

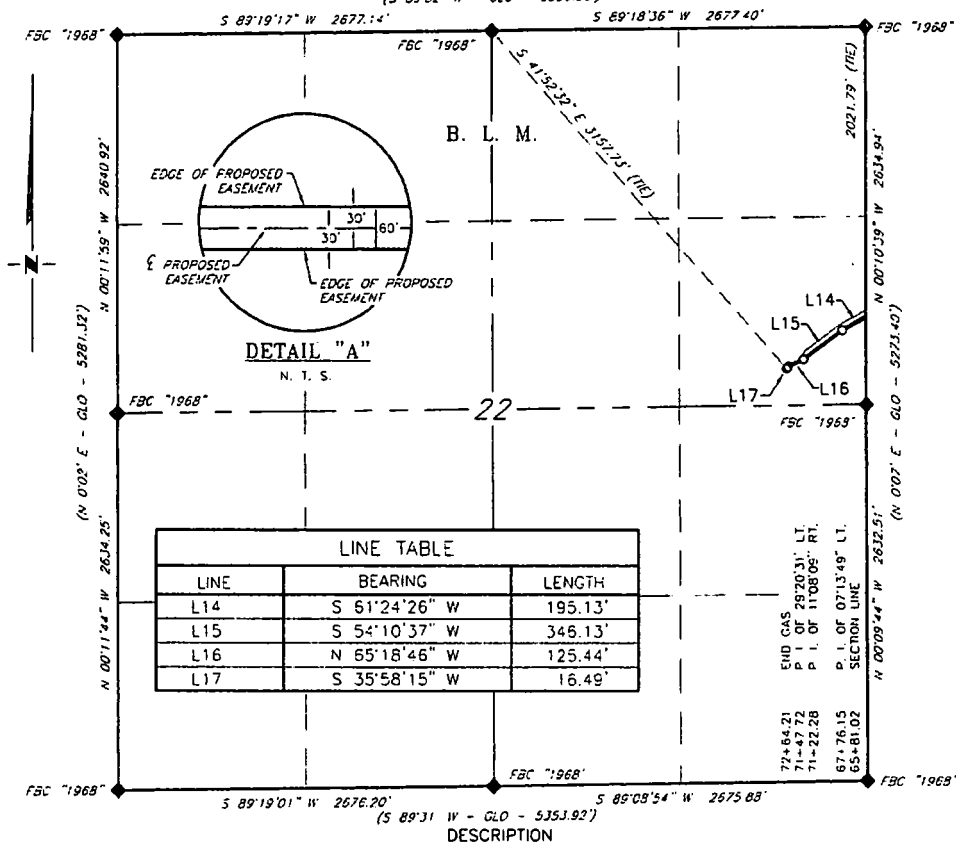
Said strip of land contains 9.065 acres, more or less, and is allocated by forties as follows:

NE 1/4 NE 1/4	82.581 Rods	1.877 Acres
SE 1/4 NE 1/4	54.559 Rods	1.240 Acres
SW 1/4 NE 1/4	86.498 Rods	1.966 Acres
SE 1/4 NW 1/4	85.163 Rods	1.935 Acres
SW 1/4 NW 1/4	90.049 Rods	2.047 Acres

Copyright 2016 - All Rights Reserved

				SCALE: 1" = 1000'
				DATE: 1-9-2018
				SURVEYED BY: JF/BK
				DRAWN BY: CMJ
				APPROVED BY: RMH
NO.	REVISION	DATE		SHEET: 3 OF 4
JOB NO.: LS1801021				
DWG. NO.: 3-1801021			308 W. BROADWAY ST., HOBBS, NM 88240 (505) 964-8200	

XTO ENERGY, INC.
PROPOSED BIG SINKS 12" GAS PIPELINE
SECTION 22, T24S, R30E,
N. M. P. M., EDDY CO., NEW MEXICO
 (S 89°32' W - GLO - 5356.56')



A strip of land 60 feet wide, being 683.19 feet or 41.405 rods in length, lying in Section 22, Township 24 South, Range 30 East, N. M. P. M., Eddy County, New Mexico, being 30 feet left and 30 feet right of the following described survey of a centerline across B. L. M. land:

BEGINNING at Engr. Sta. 65+81.02, a point on the East line of Section 22, which bears, S 00°10'39" E, 2,021.79 feet from a brass cap, stamped "1968", found for the Northeast corner of Section 22;

Thence S 61°24'26" W, 195.13 feet, to Engr. Sta. 67+76.15, a P. I. of 07°13'49" left;

Thence S 54°10'37" W, 346.13 feet, to Engr. Sta. 71+22.28, a P. I. of 11°08'09" right;

Thence S 65°18'46" W, 125.44 feet, to Engr. Sta. 72+47.72, a P. I. of 29°20'31" left;

Thence S 35°58'15" W, 16.49 feet, to Engr. Sta. 72+64.21, the End of Survey, a point in the Northeast quarter of Section 22, which bears, S 41°52'32" E, 3157.73 feet from a brass cap, stamped "1968", found for the North quarter corner of Section 22.

Said strip of land contains 0.941 acres, more or less, and is allocated by forties as follows:

SCALE: 1" = 1000'
 0 500' 1000'

SE 1/4 NE 1/4 41.405 Rods 0.941 Acres

BEARINGS ARE GRID NAD 83
 NM EAST
 DISTANCES ARE HORIZ. GROUND.

LEGEND

() RECORD DATA - GLO

◆ FOUND MONUMENT
 AS NOTED

— PROPOSED GAS PIPELINE

I, R. M. Howell, a N. M. Professional Surveyor, hereby certify that I prepared this plat from an actual survey made on the ground under my direct supervision, said survey and plat meet the Min. Stds. for Land Surveying in the State of N. M. and are true and correct to the best of my knowledge and belief.

Robert M. Howell NM PS 19680



Copyright 2016 - All Rights Reserved

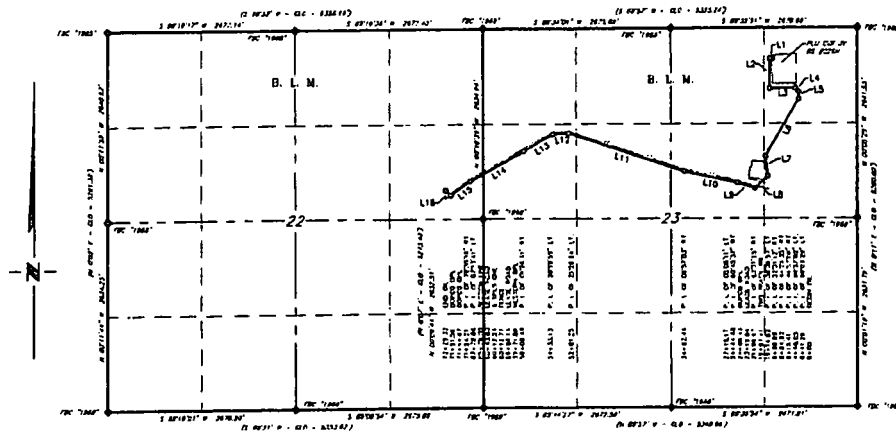
NO.	REVISION	DATE
JOB NO.:	LS1801021	
DWG. NO.:	4-1801021	

RRC

308 W. BROADWAY ST., HOBBS, NM 88240 (575) 964-8200

SCALE:	1" = 1000'
DATE:	1-9-2018
SURVEYED BY:	JF/BK
DRAWN BY:	CMJ
APPROVED BY:	RMH
SHEET:	4 OF 4

XTO ENERGY, INC.
OVERALL OF PROPOSED BIG SINKS OIL PIPELINE
SECTIONS 22 & 23, T24S, R30E,
N. M. P. M., EDDY CO., NEW MEXICO



LINE TABLE

LINE	BEARING	LENGTH
L1	S 89°54'50" W	41.29'
L2	S 00°08'39" E	407.56'
L3	N 89°14'19" E	366.56'
L4	S 45°48'35" E	69.51'
L5	S 01°19'00" E	102.07'
L6	S 31°12'11" W	927.83'
L7	S 07°24'45" E	274.85'
L8	S 46°06'50" W	254.81'
L9	N 73°07'34" W	270.69'
L10	N 78°12'45" W	767.27'
L11	N 72°15'42" W	1,718.81'
L12	S 86°17'54" W	231.88'
L13	S 59°57'55" W	475.35'
L14	S 61°24'36" W	870.18'
L15	S 54°10'48" W	345.55'
L16	N 47°14'52" W	105.11'

SCALE: 1" = 2000'
0 1000' 2000'

BEARINGS ARE GRID NAD 83
NM EAST
DISTANCES ARE HORIZ. GROUND.

LEGEND

- () RECORD DATA - GLO
- ◆ FOUND MONUMENT AS NOTED
- PROPOSED OIL PIPELINE

Copyright 2016 - All Rights Reserved

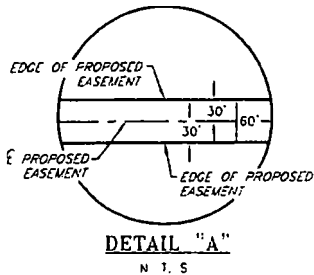
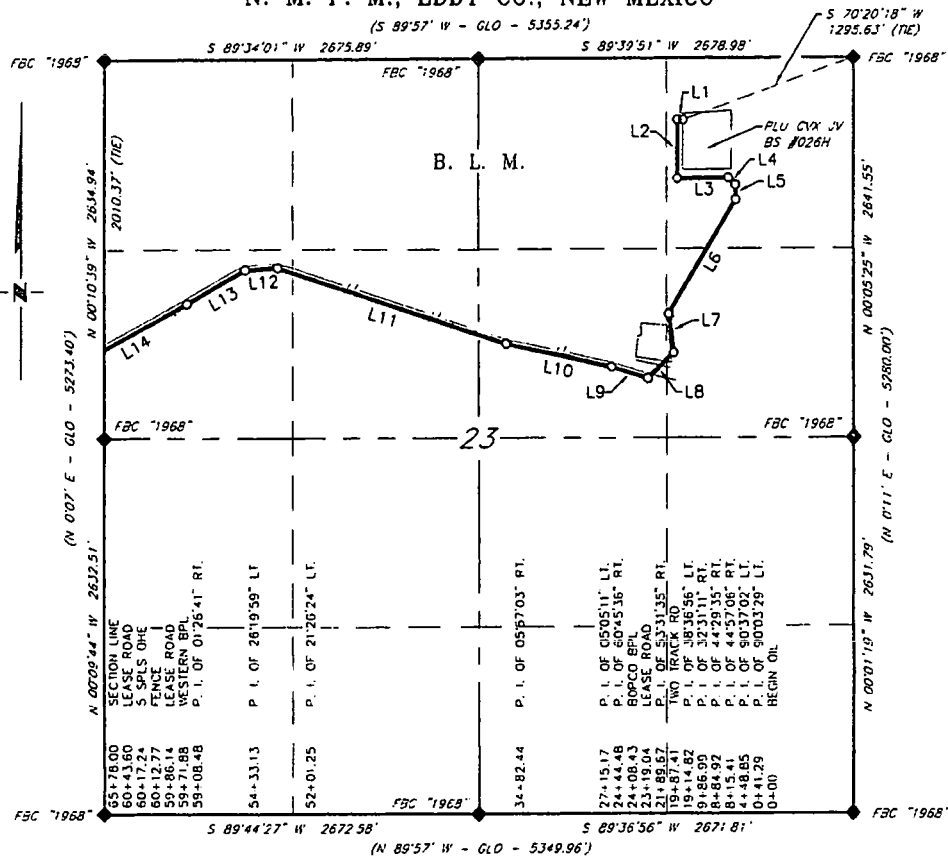
NO.	REVISION	DATE
JOB NO.: LS1801022		
DWG. NO.: 1-1801022		

RRC

302 W. BROADWAY ST., HOBBS, NM 88240 (505) 964-8200

SCALE: 1" = 2000'
DATE: 1-9-2018
SURVEYED BY: JF/BK
DRAWN BY: CMJ
APPROVED BY: RMH
SHEET: 1 OF 4

XTO ENERGY, INC.
PROPOSED BIG SINKS OIL PIPELINE
SECTION 23, T24S, R30E,
N. M. P. M., EDDY CO., NEW MEXICO



SCALE: 1" = 1000'
0 500' 1000'

BEARINGS ARE GRID NAD 83
NM EAST
DISTANCES ARE HORIZ. GROUND.

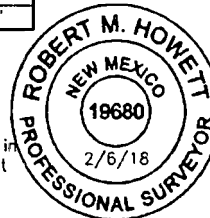
LEGEND

- () RECORD DATA - GLO
- ◆ FOUND MONUMENT AS NOTED
- PROPOSED OIL PIPELINE

LINE TABLE		
LINE	BEARING	LENGTH
L1	S 89°54'50" W	41.29'
L2	S 00°08'39" E	407.56'
L3	N 89°14'19" E	366.56'
L4	S 45°48'35" E	69.51'
L5	S 01°19'00" E	102.07'
L6	S 31°12'11" W	927.83'
L7	S 07°24'45" E	274.85'
L8	S 46°06'50" W	254.81'
L9	N 73°07'34" W	270.69'
L10	N 78°12'45" W	767.27'
L11	N 72°15'42" W	1,718.81'
L12	S 86°17'54" W	231.88'
L13	S 59°57'55" W	475.35'
L14	S 51°24'36" W	669.52'

I, R. M. Howett, a N. M. Professional Surveyor, hereby certify that I prepared this plat from an actual survey made on the ground under my direct supervision, said survey and plot meet the Min. Stds. for Land Surveying in the State of N. M. and are true and correct to the best of my knowledge and belief.

Robert M. Howett
Robert M. Howett NM PS 19680



Copyright 2016 - All Rights Reserved

NO.	REVISION	DATE
JOB NO.:	LS1801022	
DWG. NO.:	2-1801022	

RRC

308 W. BROADWAY ST., HOBBS, NM 88240 (575) 964-8200

SCALE: 1" = 1000'
DATE: 1-9-2018
SURVEYED BY: JF/BK
DRAWN BY: CMJ
APPROVED BY: RMH
SHEET: 2 OF 4

XTO ENERGY, INC.
PROPOSED BIG SINKS OIL PIPELINE
SECTION 23, T24S, R30E,
N. M. P. M., EDDY CO., NEW MEXICO

DESCRIPTION

A strip of land 60 feet wide, being 6,578.00 feet or 398.667 rods in length, lying in Section 23, Township 24 South, Range 30 East, N. M. P. M., Eddy County, New Mexico, being 30 feet left and 30 feet right of the following described survey of a centerline across B. L. M. land:

BEGINNING at Engr. Sta. 0+00, a point in the Northeast quarter of Section 23, which bears, S 70°20'18" W, 1,295.63 feet from a brass cap, stamped "1968", found for the Northeast corner of Section 23;

Thence S 89°54'50" W, 41.29 feet, to Engr. Sta. 0+41.29, a P. I. of 90°03'29" left;

Thence S 00°08'39" E, 407.56 feet, to Engr. Sta. 4+48.85, a P. I. of 90°37'02" left;

Thence N 89°14'19" E, 366.56 feet, to Engr. Sta. 8+15.41, a P. I. of 44°57'06" right;

Thence S 45°48'35" E, 69.51 feet, to Engr. Sta. 8+84.92, a P. I. of 44°29'35" right;

Thence S 01°19'00" E, 102.07 feet, to Engr. Sta. 9+86.99, a P. I. of 32°31'11" right;

Thence S 31°12'11" W, 927.83 feet, to Engr. Sta. 19+14.82, a P. I. of 38°36'56" left;

Thence S 07°24'45" E, 274.85 feet, to Engr. Sta. 21+89.67, a P. I. of 53°31'35" right;

Thence S 46°06'50" W, 254.81 feet, to Engr. Sta. 24+44.48, a P. I. of 60°45'36" right;

Thence N 73°07'34" W, 270.69 feet, to Engr. Sta. 27+15.17, a P. I. of 05°05'11" left;

Thence N 78°12'45" W, 767.27 feet, to Engr. Sta. 34+82.44, a P. I. of 05°57'03" right;

Thence N 72°15'42" W, 1,718.81 feet, to Engr. Sta. 52+01.25, a P. I. of 21°26'24" left;

Thence S 86°17'54" W, 231.88 feet, to Engr. Sta. 54+33.13, a P. I. of 26°19'59" left;

Thence S 59°57'55" W, 475.35 feet, to Engr. Sta. 59+08.48, a P. I. of 01°26'41" right;

Thence S 61°24'36" W, 669.52 feet, to Engr. Sta. 65+78.00, to a point on the West line of Section 23, which bears, S 00°10'39" E, 2,010.37 feet from a brass cap, stamped "1968", found for the Northwest corner of Section 23.

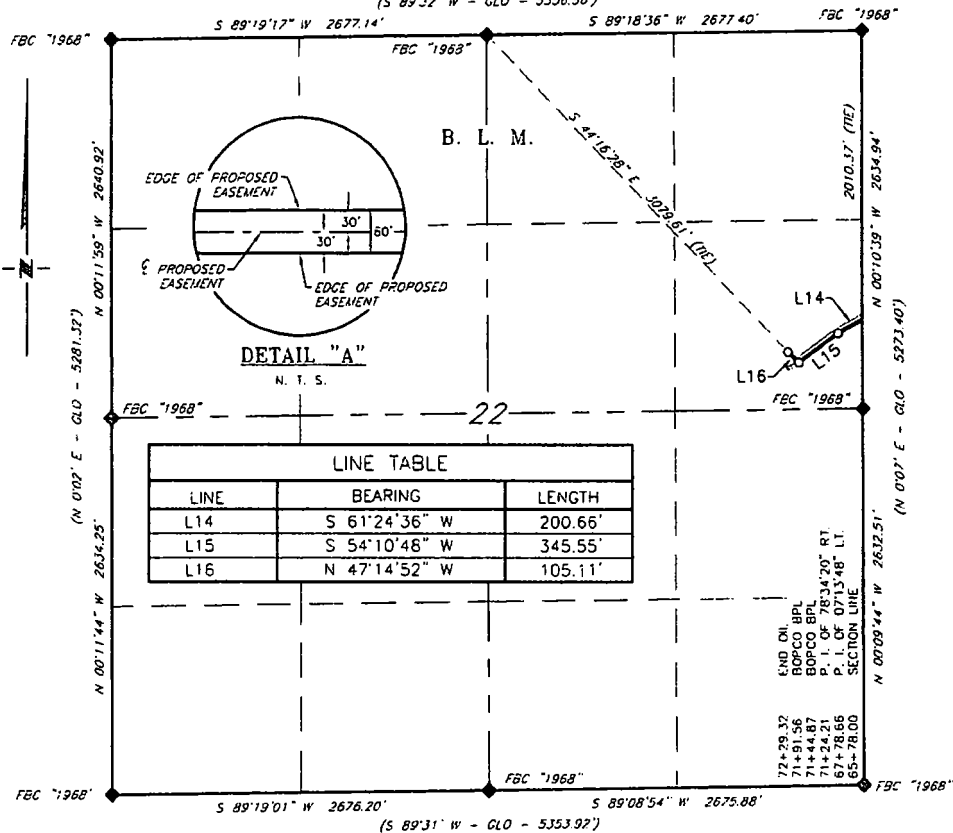
Said strip of land contains 9.061 acres, more or less, and is allocated by forties as follows:

NE 1/4 NE 1/4	83.733 Rods	1.903 Acres
SE 1/4 NE 1/4	53.052 Rods	1.206 Acres
SW 1/4 NE 1/4	86.604 Rods	1.968 Acres
SE 1/4 NW 1/4	85.162 Rods	1.935 Acres
SW 1/4 NW 1/4	90.116 Rods	2.049 Acres

Copyright 2016 - All Rights Reserved

<div style="text-align: center;">  <p>RRC</p> </div>			SCALE: 1" = 1000'	
			DATE: 1-9-2018	
			SURVEYED BY: JF/BK	
			DRAWN BY: CMJ	
			APPROVED BY: RMH	
NO.	REVISION	DATE	308 W. BROADWAY ST., HOBBS, NM 88240 (575) 964-8200	SHEET: 3 OF 4
JOB NO.: LS1801022 DWG. NO.: 3-1801022				

XTO ENERGY, INC.
PROPOSED BIG SINKS OIL PIPELINE
SECTION 22, T24S, R30E,
N. M. P. M., EDDY CO., NEW MEXICO
 (S 89°32' W - GLO - 5356.56')



DESCRIPTION

A strip of land 60 feet wide, being 651.32 feet or 39.474 rods in length, lying in Section 22, Township 24 South, Range 30 East, N. M. P. M., Eddy County, New Mexico, being 30 feet left and 30 feet right of the following described survey of a centerline across B. L. M. land:

BEGINNING at Engr. Sta. 65+78.00, a point on the East line of Section 22, which bears, S 00°10'39" E, 2,010.37 feet from a brass cap, stamped "1968", found for the Northeast corner of Section 22:

Thence S 61°24'36" W, 200.66 feet, to Engr. Sta. 67+78.66, a P. I. of 07°13'48" left;

Thence S 54°10'48" W, 345.55 feet, to Engr. Sta. 71+24.21, a P. I. of 78°34'20" right;

Thence N 47°14'52" W, 105.11 feet, to Engr. Sta. 72+29.32, the End of Survey, a point in the Northeast quarter of Section 22, which bears, S 44°16'28" E, 3,079.61 feet from a brass cap, stamped "1968", found for the North quarter corner of Section 22.

Said strip of land contains 0.897 acres, more or less, and is allocated by forties as follows:

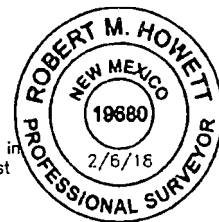
SCALE: 1" = 1000' SE 1/4 NE 1/4 39.474 Rods 0.897 Acres
 0 500' 1000'

BEARINGS ARE GRID NAD 83
 NM EAST
 DISTANCES ARE HORIZ. GROUND.

LEGEND
 () RECORD DATA - GLO
 ♦ FOUND MONUMENT AS NOTED
 — PROPOSED OIL PIPELINE

I, R. M. Howett, a N. M. Professional Surveyor, hereby certify that I prepared this plat from an actual survey made on the ground under my direct supervision, said survey and plat meet the Min. Stds. for Land Surveying in the State of N. M. and are true and correct to the best of my knowledge and belief.

Robert M. Howett
 Robert M. Howett NM PS 19680



Copyright 2016 - All Rights Reserved

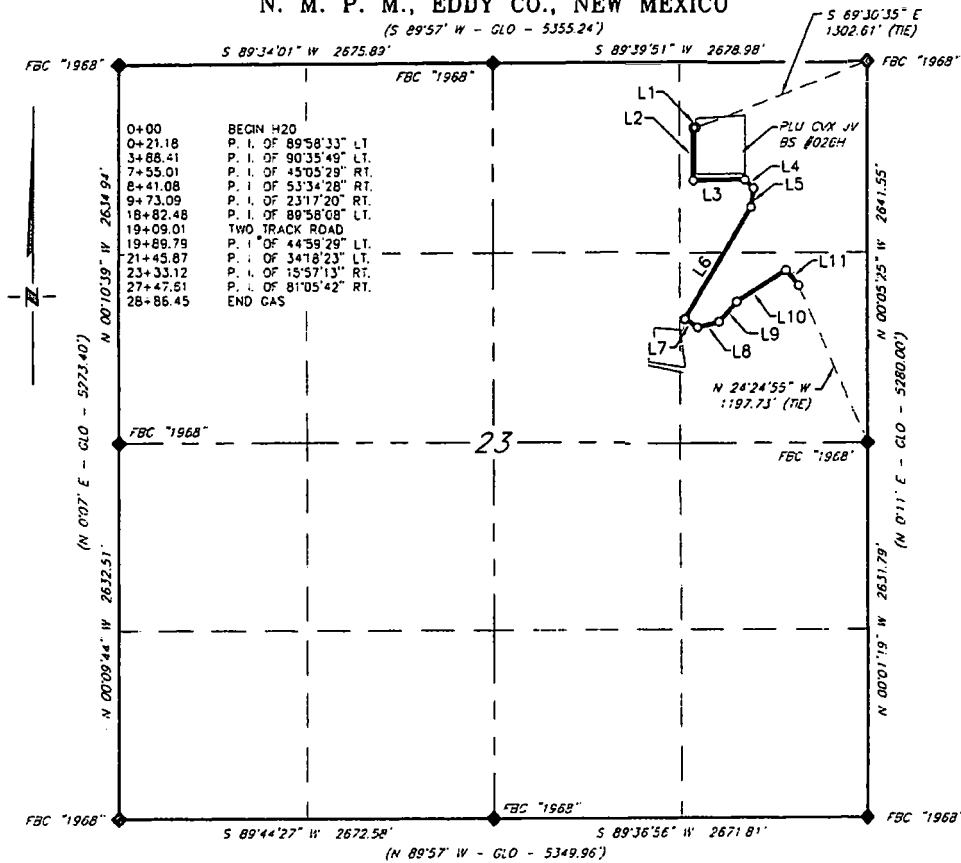
NO.	REVISION	DATE
JOB NO.:	LS1801022	
DWG. NO.:	4-1801022	

RRC

308 W. BROADWAY ST., HOBBS, NM 88240 (575) 964-8200

SCALE:	1" = 1000'
DATE:	1-9-2018
SURVEYED BY:	JF/BK
DRAWN BY:	CMJ
APPROVED BY:	RMH
SHEET:	4 OF 4

XTO ENERGY, INC.
PROPOSED BIG SINKS 10" POLY WATER LINE
SECTION 23, T24S, R30E,
N. M. P. M., EDDY CO., NEW MEXICO
 (S 89°57' W - GLO - 5355.24')



SCALE: 1" = 1000'
 0 500' 1000'

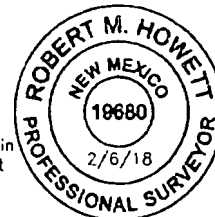
BEARINGS ARE GRID NAD 83
 NM EAST
 DISTANCES ARE HORIZ. GROUND.

LEGEND

- () RECORD DATA - GLO
 ♦ FOUND MONUMENT
 AS NOTED
 — PROPOSED WATER LINE

I, R. M. Howett, a N. M. Professional Surveyor, hereby certify that I prepared this plat from an actual survey made on the ground under my direct supervision, said survey and plat meet the Min. Stds. for Land Surveying in the State of N. M. and are true and correct to the best of my knowledge and belief.

Robert M. Howett
 Robert M. Howett NM PS 19680



Copyright 2016 - All Rights Reserved

NO.	REVISION	DATE
JOB NO.:	LS1801023	
DWG. NO.:	1-1801023	

RRC

302 W. BROADWAY ST., HOBBS, NM 88240 (575) 964-8200

SCALE: 1" = 1000'
DATE: 1-9-2018
SURVEYED BY: JF/BK
DRAWN BY: CMJ
APPROVED BY: RMH
SHEET: 1 OF 2

XTO ENERGY, INC.
PROPOSED BIG SINKS 10" POLY WATER LINE
SECTION 23, T24S, R30E,
N. M. P. M., EDDY CO., NEW MEXICO

DESCRIPTION

A strip of land 60 feet wide, being 2,886.45 feet or 174.936 rods in length, lying in Section 23, Township 24 South, Range 30 East, N. M. P. M., Eddy County, New Mexico, being 30 feet left and 30 feet right of the following described survey of a centerline across B. L. M. land:

BEGINNING at Engr. Sta. 0+00, in the Northeast quarter of Section 23, which bears, S 69°30'35" E, 1,302.61 feet from a brass cap, stamped "1968", found for the Northeast corner of Section 23;

Thence S 89°49'27" W, 21.18 feet, to Engr. Sta. 0+21.18, a P. I. of 89°58'33" left;

Thence S 00°09'06" E, 367.23 feet, to Engr. Sta. 3+88.41, a P. I. of 90°35'50" left;

Thence N 89°15'05" E, 366.60 feet, to Engr. Sta. 7+55.01, a P. I. of 45°05'29" right;

Thence S 45°39'26" E, 86.07 feet, to Engr. Sta. 8+41.08, a P. I. of 53°34'28" right;

Thence S 07°55'02" W, 132.01 feet, to Engr. Sta. 9+73.09, a P. I. of 23°17'20" right;

Thence S 31°12'22" W, 909.39 feet, to Engr. Sta. 18+82.48, a P. I. of 89°58'08" left;

Thence S 58°45'46" E, 107.31 feet, to Engr. Sta. 19+89.79, a P. I. of 44°59'29" left;

Thence N 76°14'45" E, 156.08 feet, to Engr. Sta. 21+45.87, a P. I. of 34°18'23" left;

Thence N 41°56'22" E, 187.25 feet, to Engr. Sta. 23+33.12, a P. I. of 15°57'14" right;

Thence N 57°53'36" E, 414.49 feet, to Engr. Sta. 27+47.61, a P. I. of 81°05'42" right;

Thence S 41°00'42" E, 138.84 feet, to Engr. Sta. 28+86.45, the End of Survey, a point in the Northeast quarter of Section 23, which bears, N 24°24'55" W, 1,197.73 feet from a brass cap, stamped "1968", found for the East quarter corner of Section 23.

Said strip of land contains 3.976 acres, more or less, and is allocated by forties as follows:

NE 1/4 NE 1/4	81.450 Rods	1.851 Acres
SE 1/4 NE 1/4	93.486 Rods	2.125 Acres

Copyright 2016 - All Rights Reserved

NO.	REVISION	DATE	RRC				SCALE: 1" = 1000'
JOB NO.: LS1801023							DATE: 1-9-2018
DWG. NO.: 2-1801023							DRAWN BY: CMJ
							APPROVED BY: RMH
			308 W. BROADWAY ST., HOBBS, NM 88240 (575) 964-8200				SHEET: 2 OF 2

BOPCO, L.P.

PLU Big Sinks 23 Battery

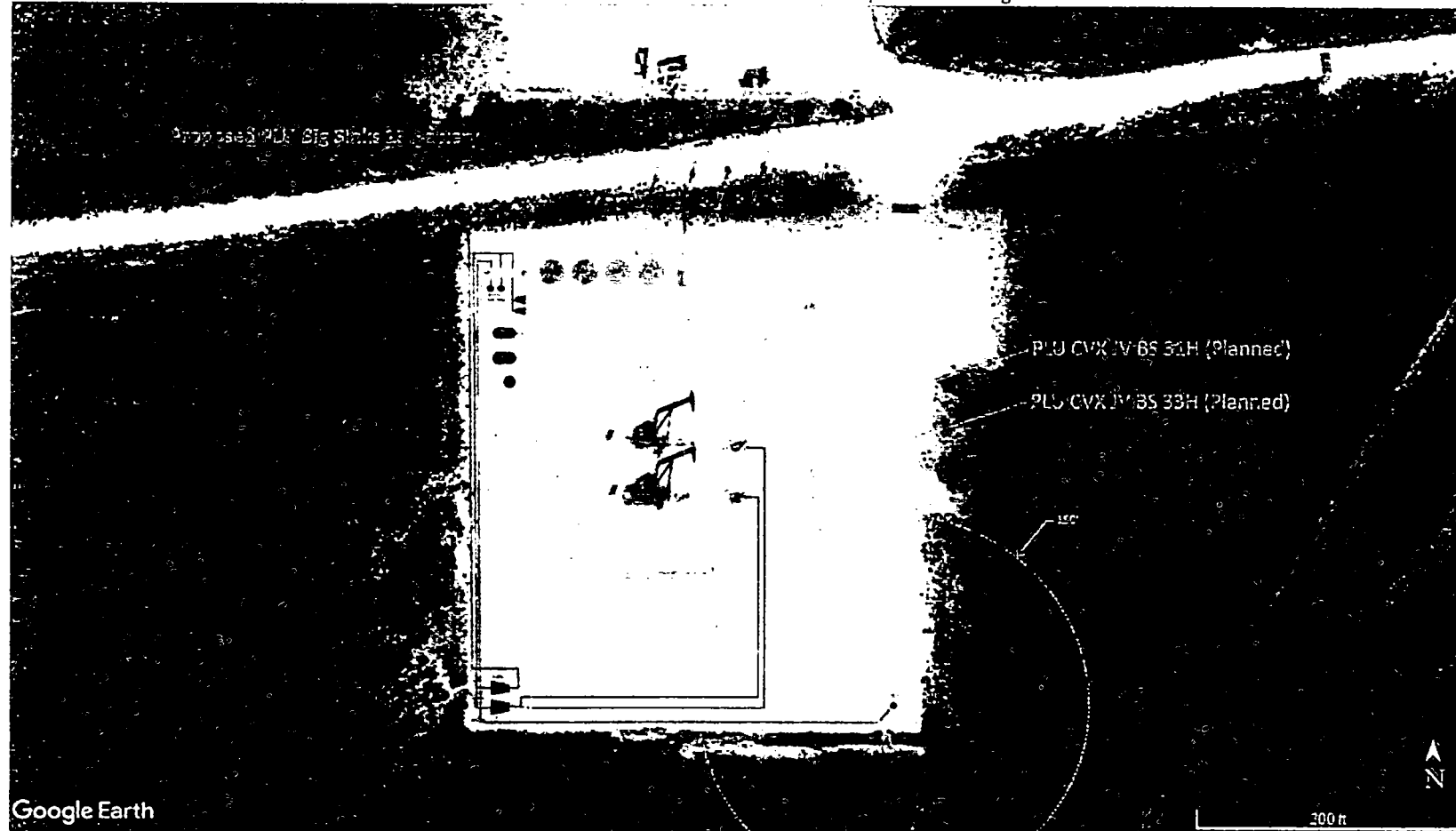
Anticipated Layout & Location

23-24S-30E, NMPPM, Eddy County, New Mexico

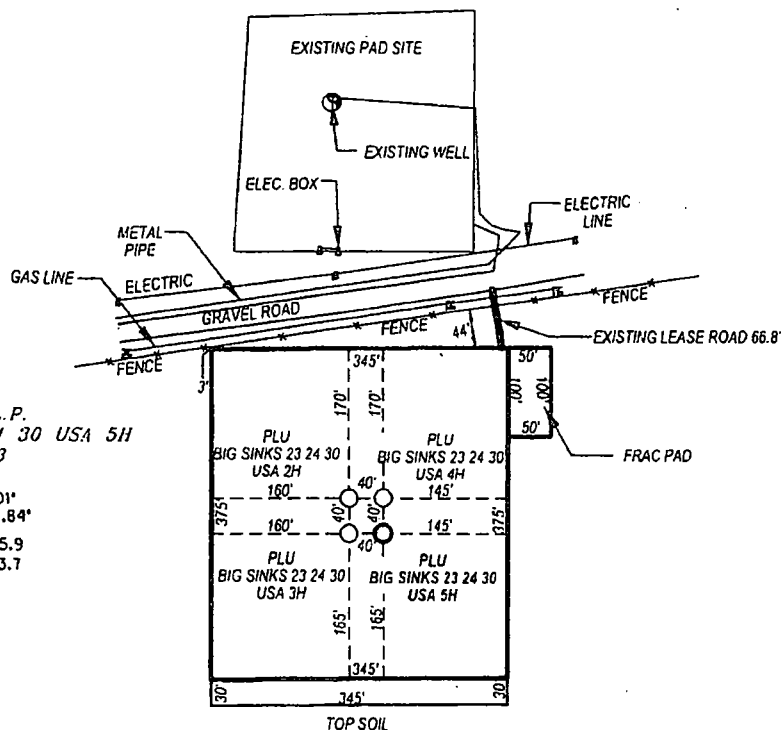
Approximate Footage Calls Correlated to PLU CVX BS 33H WH: 730'FNL & 1160'FEL [Based on Well Site Layout Diagram]

No Additional Surface Disturbance for CTB Location Only –

MSO Routes (Included in Sundry) Have New Surface Disturbance Association. See Plats for Requested Routing.



SECTION 23, TOWNSHIP 24 SOUTH, RANGE 30 EAST, N.M.P.M.,
EDDY COUNTY, WELL PAD LAYOUT NEW MEXICO



BOPCO, L.P.
PLU BIG SINKS 23 24 30 USA 5H
ELEV. -3433

Lat - N 32°12'32.01"
Long - W 103°50'44.84"

N 440055.9
NMSPCE- E 650793.7
(NAD-27)

NOTE: WELL IS LOCATED ABOUT 28 MILES SOUTHEAST OF CARLSBAD, NM

Directions to Location:

FROM THE JUNCTION OF TWIN WELLS ROAD WITH McDONALD ROAD TURN NORTHEAST ONTO TWIN WELLS ROAD CONTINUE 2.3 MILES TO JUNCTION OF TWIN WELLS ROAD AND EXISTING LEASE ROAD RUNNING IN A NORTH WEST DIRECTION. CONTINUE ON EXISTING LEASE ROAD 0.15 MILES TO EXISTING DRILL PAD SITE. TURN LEFT FOLLOWING EXISTING LEASE ROAD SOUTH OF EXISTING DRILL SITE CONTINUE 0.3 MILES TO THE JUNCTION OF A DIRT ROAD RUNNING IN A SOUTHERNLY SOUTHWEST DIRECTION 0.37 MILES TO AN EXISTING LEASE ROAD RUNNING IN A SOUTHWEST DIRECTION 0.48 MILES TO THE EXISTING LEASE ROAD TO THE NEW PROPOSED PAD SITE.

0 100 200 300 400

SCALE: 1"=200'



HALFF

HALFF ASSOCIATES, INC.
ENGINEERS - SURVEYORS
1201 NORTH BOWSER ROAD
RICHARDSON, TEXAS - 75081-2275
PHONE: (214) 346-6200
FAX: (214) 739-0095

AVO. 29714-W020

Drawn By: GS

Date: 2/6/2014

Checked By: VK



BOPCO, L.P.

REF: PLU BIG SINKS 23 24 30 USA 5H / WELL PAD TOPO

THE PLU BIG SINKS 23 24 30 USA 5H LOCATED 590'

FROM THE NORTH LINE AND 1020' FROM THE EAST LINE OF

SECTION 23, TOWNSHIP 24 SOUTH, RANGE 30 EAST,

N.M.P.M., EDDY COUNTY, NEW MEXICO.

Survey Date: 01-31-2014

Sheet 1 of 7 Sheets

Pipeline Request

BOPCO, L.P.

**Poker Lake Unit 23 Big Sinks Proposed CTB;
PLU 23 Big Sinks Proposed Oil, Gas & Water Buried Lines**

Sections 22 & 23 – 24S-30E (Bureau of Land Management)
Eddy County, New Mexico

1. PURPOSE AND NEED:

- a. BOPCO, L.P. respectfully requests an additional battery located on an existing approved well pad in the SENE quarter of Section 22-24S-30E, a 30' pipeline corridor with a 30' temporary easement through Poker Lake Unit Sections 22 and 23-T24S-R30E, beginning at the proposed Poker Lake Unit 23 battery in the SENE quarter of Section 22-24S-30E and ending in the NENE quarter of Section 23-24S-30E at the existing PLU CVX JV BS 26H battery, in addition to a second line corridor for produced water disposal beginning in the SENE quarter of Section 23-24S-30E and ending in the NENE quarter of Section 23-24S-30E. See attached plats for full route description.
- b. The purpose of the additional battery is to increase storage capacity for approved wells. The purpose of the pipeline corridor is to connect the proposed PLU 23 Big Sinks CTB to the existing PLU CVX JV BS 026H, located in Section 23-24S-30E, NMPM, Eddy County, New Mexico as an extension of the midstream takeaway system. This system is intended for the sale of oil and gas, disposal of produced water, and to interconnect critical pieces of operations safely and responsibly for long-term development and mineral production.
- c. BOPCO, L.P. anticipates a project start date of: May 30, 2018 with construction taking 6 months. Upon completion of construction, BOPCO, L.P. requests 6 mos. to complete interim reclamation of the pipeline corridor and to install necessary traffic deterrents whereupon a subsequent sundry will be filed with the AO. If additional time is deemed necessary to complete construction or reclamation, a sundry will be filed with the AO pursuant to anticipated activities.
- d. Two routes are proposed for pipelines. The first route is anticipated to hold 2 lines, one for oil and one for gas. The second route is anticipated to hold 1 line for the disposal of produced water where it will tie-in to an existing produced water system.
 - i. Proposed Route 1: HP Oil & HP Gas (in same corridor)
 1. Buried HP Oil Line: 6" Steel, Operating Psi: 1440, Burst: 1800psi &
Buried HP Gas Line: 12" Steel, Operating Psi: 1440, Burst: 1800psi
 - ii. Proposed Route 2: LP Produced Water Tie-In
 1. Buried Produced Water Line: 10" Poly, Operating Psi: 125, Burst: 160psi.
- e. Pipeline specifics can be found on Exhibit A.
- f. All lines will be buried a minimum of 36" beneath the surface.
- g. Requested disturbance is anticipated to follow existing disturbance areas.
- h. The buried lines will be identified by signs at the point of origin and completion of the line in addition to all road crossings. Signs will state, at minimum: the holder's name and product being transported. All signs and information thereon will be posted in a permanent, conspicuous manner, and will be maintained in a legible condition for the life of the lines.
- i. The line route will not be used as a road for purposes other than routine maintenance as determined necessary by the AO in consultation with BOPCO, L.P. before maintenance begins. BOPCO, L.P. will take all necessary precautions to ensure that the pipeline route

is not used as a roadway. Temporary deterrence structures will be used as needed and approved by the AO.

- j. All permanent aboveground structures (on site six months or longer), such as risers, constructed or installed on location and not subject to safety requirements will be painted Carlsbad Canyon as approved by the AO recreation specialist, reducing the visual impacts on the built environment.
- k. Escape ramps will be constructed and maintained that are not fenced, screened, or netted to prevent livestock, wildlife, and humans from becoming entrapped. BOPCO, L.P. will construct and maintain escape ramps, ladders, or other methods of avian/terrestrial wildlife escape in the trenches according to the following criteria:
 - i. Any trench left open for 8 hours or less will not have escape ramps. However, prior to backfilling, BOPCO, L.P. shall inspect the trench for wildlife, remove all trapped wildlife, and release them at least 100 yards from the trench.
 - ii. Any trench left open for more than 8 hours will have earthen escape ramps built at no more than a 30 degree slope and spaced no more than 500' apart inside of the trench.

2. PIPELINE LOCATION:

- a. Corridor 1 (HP Oil & Gas): Beginning in the SENE quarter of Section 22-24S-30E going Northeast, Southeast, then North 7229.32' and ending in the NENE quarter of Section 23-24S-30E.
- b. Corridor 2 (LP Produced Water): Beginning in the SENE quarter of Section 23-24S-30E headed Southwest, then Northeast 2886.45' and ending in the NENE quarter of Section 23-24S-30E.

3. LOCATION OF PROPOSED FACILITIES

- a. **Production Facilities.** A central tank battery is requested to be built on an existing well pad located in the SENE quarter of Section 22-24S-30E for use of storage, measurement, and sales of mineral production from nearby wells. The Central Tank Battery is proposed on existing approved disturbance. No additional surface disturbance is anticipated or requested. A 3160-5 sundry notification will be submitted after construction with a site-security diagram and layout of the facility with associated equipment.
- b. **Flowlines.** In the event the nearby drilled wells are found productive, 4" composite flexpipe or steel flowlines with a maximum safety pressure rating of 750psi (operating pressure: 125psi) will be laid on the surface of the existing approved well pad to the proposed tank battery. No additional surface disturbance is anticipated or requested.
- c. **Flare.** A flare will be located on the SE corner of the existing well pad (see proposed google earth image attached). The flare will be sized and rated based on anticipated reserves and recovery of gas throughout the development area with 150' of distance between all facility equipment, road and well pad locations for safety purposes.
- d. **Containment Berms.** Containment berms will be constructed completely around any production facilities designed to hold fluids. The containment berms will be constructed of compacted subsoil, be sufficiently impervious, hold 1 ½ times the capacity of the largest tank and away from cut or fill areas.

4. PROPOSED ROADS:

- a. **New Roads.** No new roads are anticipated or needed. Existing roads will be used.
- b. **Anticipated Traffic.** After construction completion, travel to each well site will include only those required to maintain and monitor the appropriate facilities.

5. ADDITIONAL GOVERNMENT AGENCIES INVOLVED:

- a. None.

6. METHODS OF HANDLING WASTE DISPOSAL:

- a. Portable, self-contained chemical toilets will be provided for human waste disposal. Upon completion of operations, or as required, the toilet holding tanks will be pumped and the contents thereof disposed of in an approved sewage disposal facility. All state and local laws and regulations pertaining to disposal of human and solid waste will be complied with. This equipment will be properly maintained during the drilling and completion operations and will be removed when all operations are complete.
- b. All trash, junk, and other waste materials will be contained in trash cages or bins to prevent scattering and will be removed and deposited in an approved sanitary landfill. Immediately after trunk line completion all debris and other waste materials on and around the well location not contained in the trash cage will be cleaned up and removed from the location. No potentially adverse materials or substances will be left on the location.
- c. Hazardous Materials.
 - i. BOPCO, L.P., and its contractors will comply with all applicable Federal, State and local laws and regulations, existing or hereafter enacted promulgated, with regard to any hazardous material, as defined in this paragraph, that will be used, produced, transported or stored on the oil and gas lease. "Hazardous material" means any substance, pollutant or contaminant that is listed as hazardous under the CERCLA of 1980, as amended, 42 U.S.C 9601 et seq., and its regulation. The definition of hazardous substances under CERCLA includes any "hazardous waste" as defined in the RCRA of 1976, as amended, 42 U.S.C. 6901 et seq., and its regulations. The term hazardous material also includes any nuclear or nuclear by-product material as defined by the Atomic Energy Act of 1954, as amended, 42 U.S.C. 2011 et seq. The term does not include petroleum, including crude oil or any fraction thereof that is not otherwise specifically listed or designated as a hazardous substance under CERCLA Section 101 (14) U.S.C. 9601 (14) nor does the term include natural gas.
 - ii. No hazardous substances or wastes will be stored on the location after completion of the trunk line.
 - iii. Chemicals brought to location will be on the Toxic Substance Control Act (TSCA) approved inventory list.
 - iv. All undesirable events (fires, accidents, blowouts, spills, discharges) as specified in Notice to Lessees (NTL) 3A will be reported to the BLM Carlsbad Field Office. Major events will be reported verbally within 24 hours, followed by a written report within 15 days. "Other than Major Events" will be reported in writing within 15 days.

7. ANCILLARY FACILITIES:

No campsite, airstrip or other facilities will be built as a result of this operation. No staging areas are needed.

8. PLANS FOR SURFACE RECLAMATION:

Interim Reclamation:

Definition: Reclamation includes disturbed areas where the original landform and a natural vegetative community will be restored and it is anticipated the site will not be disturbed for future development.

Reclamation Standards:

After construction has taken place, all areas of the applied for corridor will be reclaimed and seeded as per BLM requirements for reclamation.

Vegetation, soil, and rocks left as a result of construction of maintenance activity will be randomly scattered on the applied for pipeline corridor and will not be left in rows, piles, or berms, unless otherwise approved by the Authorized Officer. The entire pipeline corridor shall be recontoured to match the surrounding landscape. The backfilled soil shall be compacted and a 6-inch berm will be left over the ditch line to allow for settling back to grade.

Erosion features are equal to or less than surrounding area and erosion control is sufficient so that water naturally infiltrates into the soil and gullying, headcutting, slumping, and deep or excessive rills (greater than 3 inches) are not observed.

In those areas where erosion control structure are required to stabilize soil conditions, BOPCO, L.P. will install such structures as are suitable for specific soil conditions being encountered and which are in accordance with sound resource management practices.

The location will then be ripped and seeded. A self-sustaining, vigorous, diverse, native (or otherwise approved) plant community will be established on the site with a density sufficient to control erosion and invasion by non-native plants and to re-establish wildlife habitat or forage production. At a minimum, the established plant community will consist of species included in the seed mix and/or desirable species occurring in the surrounding natural vegetation.

The site will be free of State-or County-listed noxious weeds, oil field debris and equipment, and contaminated soil. Invasive and non-native weeds will be controlled.

Seeding:

- Seedbed Preparation: Initial seedbed preparation will consist of recontouring to the appropriate interim or final reclamation standard. All compacted areas to be seeded will be ripped to a minimum depth of 18 inches with a minimum furrow spacing of 2 feet, followed by recontouring the surface and then evenly spreading the stockpiled topsoil. Prior to seeding, the seedbed will be scarified to a depth of no less than 4-6 inches. If the site is to be broadcast seeded, the surface will be

left rough enough to trap seed and snow, control erosion, and increase water infiltration.

- If broadcast seeding is to be used and is delayed, final seedbed preparation will consist of contour cultivating to a depth of 4-6 inches within 24 hours prior to seeding, dozer tracking, or other imprinting in order to break the soil crust and create seed germination micro-sites.
- Seed Application. Seeding will be conducted no more than two weeks following completion of final seedbed preparation. A certified weed-free seed mix designed by the BLM to meet reclamation standards will be used.
- If the site is harrowed or dragged, seed will be covered by no more than 0.25 inch of soil.

9. OTHER INFORMATION:

- a. There is no permanent or live water in the immediate area.
- b. There are no dwellings within 2 miles of this location.
- c. Archaeology: payment has been made in accordance with the MOA.

10. BOND COVERAGE:

- a. BOPCO, L.P. Bond Number: COB00050

Exhibit A

Poker Lake Unit 23 Big Sinks Pipeline – BOPCO, L.P.

Sections 22 & 23-24S-30E (Bureau of Land Management)

Eddy County, New Mexico

Total Pipeline Width:	60'
Total Federal Pipeline Length:	10,115.77
Temporary Federal Surface Disturbance:	13.93 Acres
Permanent Federal Surface Disturbance:	0 Acres (Fully Reclaimed)

Plat Designation Name: Big Sinks Oil Pipeline

Line Length: 7229.32'

<u>Number</u>	<u>Purpose</u>	<u>Diameter</u>	<u>MAOP/Hydro</u>	<u>Material</u>	<u>Location</u>
1	HP Oil	6"	1440psi/1800psi	Steel	Buried

Same Corridor As Big Sinks Gas P/L

Plat Designation Name: Big Sinks Gas Pipeline

Line Length: 7229.32'

<u>Number</u>	<u>Purpose</u>	<u>Diameter</u>	<u>MAOP/Hydro</u>	<u>Material</u>	<u>Location</u>
1	HP Gas	12" or Less	1440psi/1800psi	Steel	Buried

Same Corridor As Big Sinks Oil P/L

Plat Designation Name: Big Sinks Water Line

Line Length: 2886.45'

<u>Number</u>	<u>Purpose</u>	<u>Diameter</u>	<u>MAOP/Hydro</u>	<u>Material</u>	<u>Location</u>
1	Produced Water	10" or Less	125psi/160psi	Poly	Buried

BURIED PIPELINE STIPULATIONS

A copy of the application (Grant, APD, or Sundry Notice) and attachments, including conditions of approval, survey plat and/or map, will be on location during construction. BLM personnel may request to you a copy of your permit during construction to ensure compliance with all stipulations.

Holder agrees to comply with the following stipulations to the satisfaction of the Authorized Officer:

1. The Holder shall indemnify the United States against any liability for damage to life or property arising from the occupancy or use of public lands under this grant.
2. The Holder shall comply with all applicable Federal laws and regulations existing or hereafter enacted or promulgated. In any event, the holder shall comply with the Toxic Substances Control Act of 1976 as amended, 15 USC 2601 et seq. (1982) with regards to any toxic substances that are used, generated by or stored on the right-of-way or on facilities authorized under this right-of-way grant. (See 40 CFR Part 702-799 and especially, provisions on polychlorinated biphenyls, 40 CFR 761.1-761.193.) Additionally, any release of toxic substances (leaks, spills, etc.) in excess of the reportable quantity established by 40 CFR Part 117 shall be reported as required by the Comprehensive Environmental Response, Compensation, and Liability Act, section 102b. A copy of any report required or requested by any Federal agency or State government as a result of a reportable release or spill of any toxic substances shall be furnished to the authorized officer concurrent with the filing of the reports to the involved Federal agency or State government.
3. The holder agrees to indemnify the United States against any liability arising from the release of any hazardous substance or hazardous waste (as these terms are defined in the Comprehensive Environmental Response, Compensation and Liability Act of 1980, 42 U.S.C. 9601, et seq. or the Resource Conservation and Recovery Act, 42 U.S.C. 6901, et seq.) on the Right-of-Way (unless the release or threatened release is wholly unrelated to the Right-of-Way holder's activity on the Right-of-Way), or resulting from the activity of the Right-of-Way holder on the Right-of-Way. This agreement applies without regard to whether a release is caused by the holder, its agent, or unrelated third parties.
4. If, during any phase of the construction, operation, maintenance, or termination of the pipeline, any oil or other pollutant should be discharged from the pipeline system, impacting Federal lands, the control and total removal, disposal, and cleaning up of such oil or other pollutant, wherever found, shall be the responsibility of holder, regardless of fault. Upon failure of holder to control, dispose of, or clean up such discharge on or affecting Federal lands, or to repair all damages resulting therefrom, on the Federal lands, the Authorized Officer may take such measures as he deems necessary to control and clean up the discharge and restore the area, including where appropriate, the aquatic environment and fish and wildlife habitats, at the full expense of the holder. Such action by the Authorized Officer shall not relieve holder of any responsibility as provided herein.

5. All construction and maintenance activity will be confined to the authorized right-of-way.
6. The pipeline will be buried with a minimum cover of 36 inches between the top of the pipe and ground level.
7. The maximum allowable disturbance for construction in this right-of-way will be 30 feet:
- Blading of vegetation within the right-of-way will be allowed: maximum width of blading operations will not exceed 20 feet. The trench is included in this area. (*Blading is defined as the complete removal of brush and ground vegetation.*)
 - Clearing of brush species within the right-of-way will be allowed: maximum width of clearing operations will not exceed 30 feet. The trench and bladed area are included in this area. (*Clearing is defined as the removal of brush while leaving ground vegetation (grasses, weeds, etc.) intact. Clearing is best accomplished by holding the blade 4 to 6 inches above the ground surface.*)
 - The remaining area of the right-of-way (if any) shall only be disturbed by compressing the vegetation. (*Compressing can be caused by vehicle tires, placement of equipment, etc.*)
8. The holder shall stockpile an adequate amount of topsoil where blading is allowed. The topsoil to be stripped is approximately 6 inches in depth. The topsoil will be segregated from other spoil piles from trench construction. The topsoil will be evenly distributed over the bladed area for the preparation of seeding.
9. The holder shall minimize disturbance to existing fences and other improvements on public lands. The holder is required to promptly repair improvements to at least their former state. Functional use of these improvements will be maintained at all times. The holder will contact the owner of any improvements prior to disturbing them. When necessary to pass through a fence line, the fence shall be braced on both sides of the passageway prior to cutting of the fence. No permanent gates will be allowed unless approved by the Authorized Officer.
10. Vegetation, soil, and rocks left as a result of construction or maintenance activity will be randomly scattered on this right-of-way and will not be left in rows, piles, or berms, unless otherwise approved by the Authorized Officer. The entire right-of-way shall be recontoured to match the surrounding landscape. The backfilled soil shall be compacted and a 6 inch berm will be left over the ditch line to allow for settling back to grade.
11. In those areas where erosion control structures are required to stabilize soil conditions, the holder will install such structures as are suitable for the specific soil conditions being encountered and which are in accordance with sound resource management practices.
12. The holder will reseed all disturbed areas. Seeding will be done according to the attached seeding requirements, using the following seed mix.

- | | |
|------------------------|-----------------------------|
| () seed mixture 1 | () seed mixture 3 |
| (X) seed mixture 2 | () seed mixture 4 |
| () seed mixture 2/LPC | () Aplomado Falcon Mixture |

13. All above-ground structures not subject to safety requirements shall be painted by the holder to blend with the natural color of the landscape. The paint used shall be color which simulates "Standard Environmental Colors" – **Shale Green**, Munsell Soil Color No. 5Y 4/2.

14. The pipeline will be identified by signs at the point of origin and completion of the right-of-way and at all road crossings. At a minimum, signs will state the holder's name, BLM serial number, and the product being transported. All signs and information thereon will be posted in a permanent, conspicuous manner, and will be maintained in a legible condition for the life of the pipeline.

15. The holder shall not use the pipeline route as a road for purposes other than routine maintenance as determined necessary by the Authorized Officer in consultation with the holder before maintenance begins. The holder will take whatever steps are necessary to ensure that the pipeline route is not used as a roadway. As determined necessary during the life of the pipeline, the Authorized Officer may ask the holder to construct temporary deterrence structures.

16. Any cultural and/or paleontological resources (historic or prehistoric site or object) discovered by the holder, or any person working on his behalf, on public or Federal land shall be immediately reported to the Authorized Officer. Holder shall suspend all operations in the immediate area of such discovery until written authorization to proceed is issued by the Authorized Officer. An evaluation of the discovery will be made by the Authorized Officer to determine appropriate actions to prevent the loss of significant cultural or scientific values. The holder will be responsible for the cost of evaluation and any decision as to proper mitigation measures will be made by the Authorized Officer after consulting with the holder.

17. The operator shall be held responsible if noxious weeds become established within the areas of operations. Weed control shall be required on the disturbed land where noxious weeds exist, which includes associated roads, pipeline corridor and adjacent land affected by the establishment of weeds due to this action. The operator shall consult with the Authorized Officer for acceptable weed control methods, which include following EPA and BLM requirements and policies.

18. Escape Ramps - The operator will construct and maintain pipeline/utility trenches [that are not otherwise fenced, screened, or netted] to prevent livestock, wildlife, and humans from becoming entrapped. At a minimum, the operator will construct and maintain escape ramps, ladders, or other methods of avian and terrestrial wildlife escape in the trenches according to the following criteria:

- a. Any trench left open for eight (8) hours or less is not required to have escape ramps; however, before the trench is backfilled, the contractor/operator shall inspect the trench for wildlife, remove all trapped wildlife, and release them at least 100 yards from the trench.
- b. For trenches left open for eight (8) hours or more, earthen escape ramps (built at no more than a 30 degree slope and spaced no more than 500 feet apart) shall be placed in the trench.