

NM OIL CONSERVATION  
ARTESIA DISTRICT

NOV 08 2018

District I  
1625 N. French Dr., Hobbs, NM 88240  
Phone: (575) 993-4161 Fax: (575) 393-0720  
District II  
811 S. First St., Artesia, NM 88210  
Phone: (575) 748-1283 Fax: (575) 748-9720  
District III  
1000 Rio Brazos Road, Aztec, NM 87410  
Phone: (505) 334-6178 Fax: (505) 334-6170  
District IV  
1220 S. St. Francis Dr., Santa Fe, NM 87503  
Phone: (505) 475-3650 Fax: (505) 475-3462

State of New Mexico  
Energy, Minerals & Natural Resources Department  
OIL CONSERVATION DIVISION  
1220 South St. Francis Dr.  
Santa Fe, NM 87505

RECEIVED

Form C-102  
Revised August 1, 2011  
Submit one copy to appropriate  
District Office

AMENDED REPORT  
(Ac-Drilled)

WELL LOCATION AND ACREAGE DEDICATION PLAT

API Number <b>30-015-44585</b>	Pool Code <b>98220</b>	Pool Name <b>Purple Sage Wolfcamp</b>
Property Code <b>319797</b>	Property Name <b>CORRAL FLY "02-01" STATE</b>	Well Number <b>31H</b>
OGRID No. <b>16696</b>	Operator Name <b>OXY USA INC.</b>	Elevation <b>2994.8'</b>

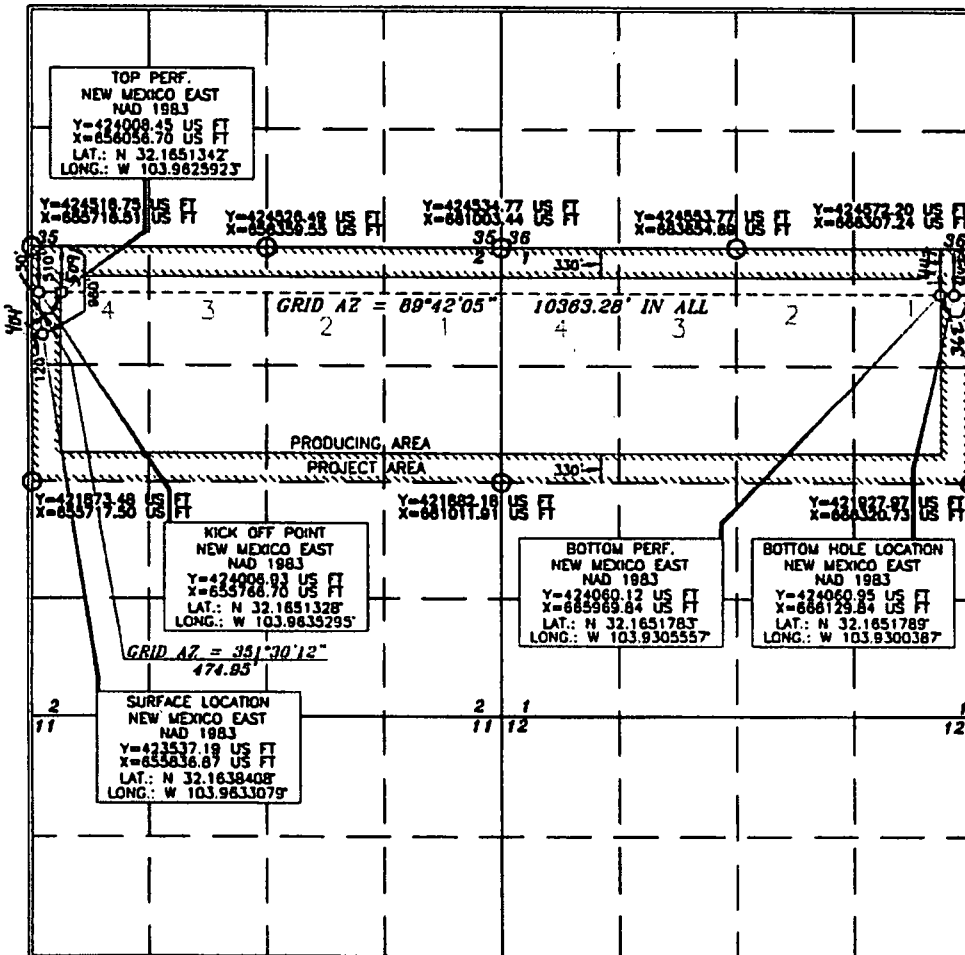
Surface Location

UL or lot no.	Section	Township	Range	Lot Idn	Feet from the	North/South line	Feet from the	East/West line	County
4	2	25 SOUTH	29 EAST, N.M.P.M.		980'	NORTH	120'	WEST	EDDY

Bottom Hole Location If Different From Surface

UL or lot no.	Section	Township	Range	Lot Idn	Feet from the	North/South line	Feet from the	East/West line	County
1	1	25 SOUTH	29 EAST, N.M.P.M.		507'	NORTH	792'	EAST	EDDY
Dedicated Acres <b>640</b>	Joint or Infill <b>Y</b>	Consolidation Code	-Order No.	<b>LTP - 447 FNL 362 FEL</b> <b>FTP - 509 FNL 404 FWL</b>					

No allowable will be assigned to this completion until all interests have been consolidated or a non-standard unit has been approved by the division.



OPERATOR CERTIFICATION

I hereby certify that the information contained herein is true and complete to the best of my knowledge and belief, and that this organization either owns a working interest or unleased mineral interest in the land including the proposed bottom hole location or has a right to drill this well at this location pursuant to a contract with an owner of such a mineral or working interest, or to a voluntary pooling agreement or a compulsory pooling order heretofore entered by the division.

Signature: *[Signature]* Date: **11/8/18**  
Printed Name: **Jana Mendiola**  
E-mail Address: **jana@mendiolaoxy.com**

SURVEYOR CERTIFICATION

I hereby certify that the well location shown on this plat was plotted from the best of actual surveys made by the undersigned or under my supervision, and that the same is true and correct to the best of my belief.

Date of Survey: **15079**  
**17**  
Signature and Seal of Professional Land Surveyor: *[Signature]*  
Certificate Number: **15079**