

UNITED STATES
DEPARTMENT OF THE INTERIOR
BUREAU OF LAND MANAGEMENT

OCD Artesia

FORM APPROVED
OMB No. 1004-0137
Expires: July 31, 2010

WELL COMPLETION OR RECOMPLETION REPORT AND LOG

5. Lease Serial No.
NMNM593861a. Type of Well ☒ Oil Well ☐ Gas Well ☐ Dry ☐ Other
b. Type of Completion ☒ New Well ☐ Work Over ☐ Deepen ☐ Plug Back ☐ Diff. Resvr.
Other _____

6. If Indian, Allottee or Tribe Name

7. Unit or CA Agreement Name and No.

2. Name of Operator
OXY USA INCORPORATED

Contact: JANA MENDIOLA

E-Mail: janalyn_mendiola@oxy.com

8. Lease Name and Well No.
CORRAL CANYON 36-25 FED COM 25H3. Address 5 GREENWAY PLAZA SUITE 110
HOUSTON, TX 77046-05213a. Phone No. (include area code)
Ph: 432-685-59369. API Well No.
30-015-44635-00-S1

4. Location of Well (Report location clearly and in accordance with Federal requirements)*

Sec 1 T25S R29E Mer NMP

At surface Lot 1 940FNL 1248FEL 32.163987 N Lat, 103.933488 W Lon

Sec 36 T24S R29E Mer NMP

At top prod interval reported below SESE 372FSL 1281FEL 32.167506 N Lat, 103.933531 W Lon

Sec 25 T24S R29E Mer NMP

At total depth NENE 212FNL 1293FEL 32.195148 N Lat, 103.933546 W Lon

10. Field and Pool, or Exploratory
PIERCE CROSSING-BONE SPRING, E11. Sec., T., R., M., or Block and Survey
or Area Sec 1 T25S R29E Mer NMP12. County or Parish
EDDY13. State
NM14. Date Spudded
02/24/201815. Date T.D. Reached
04/18/201816. Date Completed
☐ D & A ☒ Ready to Prod.
06/06/201817. Elevations (DF, KB, RT, GL)*
3136 GL18. Total Depth: MD
TVD 19575
919719. Plug Back T.D.: MD
TVD 19515
919720. Depth Bridge Plug Set: MD
TVD21. Type Electric & Other Mechanical Logs Run (Submit copy of each)
MUDLOG22. Was well cored? ☒ No ☐ Yes (Submit analysis)
Was DST run? ☒ No ☐ Yes (Submit analysis)
Directional Survey? ☐ No ☒ Yes (Submit analysis)

23. Casing and Liner Record (Report all strings set in well)

Hole Size	Size/Grade	Wt. (#/ft.)	Top (MD)	Bottom (MD)	Stage Cementer Depth	No. of Sk. & Type of Cement	Slurry Vol. (BBL)	Cement Top*	Amount Pulled
14.750	10.750 J55	45.5	0	657		825	200	0	
9.875	7.625 L80	26.4	0	8648	3387	1826	620	0	
6.750	5.500 P110	20.0	0	19562		834	217	8130	

24. Tubing Record

Size	Depth Set (MD)	Packer Depth (MD)	Size	Depth Set (MD)	Packer Depth (MD)	Size	Depth Set (MD)	Packer Depth (MD)

25. Producing Intervals

26. Perforation Record

Formation	Top	Bottom	Perforated Interval	Size	No. Holes	Perf. Status
A) BONE SPRING 2ND	9570	19422	9570 TO 19422	0.370	1200	ACTIVE
B)						
C)						
D)						

27. Acid, Fracture, Treatment, Cement Squeeze, Etc.

Depth Interval	Amount and Type of Material
9570 TO 19422	12303102G SLICKWATER + 7182G 7.5% HCL ACID W/15024885# SAND

RECEIVED

NOV 28 2018

28. Production - Interval A

DISTRICT II-ARTESIA O.C.D.

Date First Produced	Test Date	Hours Tested	Test Production	Oil BBL	Gas MCF	Water BBL	Oil Gravity Corr. API	Gas Gravity	Production Method
06/09/2018	06/23/2018	24	→	1600.0	2922.0	4112.0			FLOW FROM WELL
Choke Size	Tbg. Press. Flwg.	Csg. Press.	24 Hr. Rate	Oil BBL	Gas MCF	Water BBL	Gas:Oil Ratio	Well Status	
61/128	SI	1000.0	→	1600	2922	4112	1826	POW	
28a. Production - Interval B									
Date First Produced	Test Date	Hours Tested	Test Production	Oil BBL	Gas MCF	Water BBL	Oil Gravity Corr. API	Gas Gravity	Production Method
			→						
Choke Size	Tbg. Press. Flwg.	Csg. Press.	24 Hr. Rate	Oil BBL	Gas MCF	Water BBL	Gas:Oil Ratio	Well Status	
	SI		→						

ACCEPTED FOR RECORD
NOV 17 2018
BUREAU OF LAND MANAGEMENT
CARLSBAD FIELD OFFICE

(See Instructions and spaces for additional data on reverse side)

ELECTRONIC SUBMISSION #432493 VERIFIED BY THE BLM WELL INFORMATION SYSTEM

** BLM REVISED ** BLM REVISED ** BLM REVISED ** BLM REVISED ** BLM REVISED **

Reclamation Due 12/6/2018

28b. Production - Interval C

Date First Produced	Test Date	Hours Tested	Test Production	Oil BBL	Gas MCF	Water BBL	Oil Gravity Corr. API	Gas Gravity	Production Method
			→						
Choke Size	Tbg. Press. Flwg. SI	Csg. Press.	24 Hr. Rate	Oil BBL	Gas MCF	Water BBL	Gas:Oil Ratio	Well Status	
			→						

28c. Production - Interval D

Date First Produced	Test Date	Hours Tested	Test Production	Oil BBL	Gas MCF	Water BBL	Oil Gravity Corr. API	Gas Gravity	Production Method
			→						
Choke Size	Tbg. Press. Flwg. SI	Csg. Press.	24 Hr. Rate	Oil BBL	Gas MCF	Water BBL	Gas:Oil Ratio	Well Status	
			→						

29. Disposition of Gas(Sold, used for fuel, vented, etc.)

SOLD

30. Summary of Porous Zones (Include Aquifers):

Show all important zones of porosity and contents thereof: Cored intervals and all drill-stem tests, including depth interval tested, cushion used, time tool open, flowing and shut-in pressures and recoveries.

31. Formation (Log) Markers

Formation	Top	Bottom	Descriptions, Contents, etc.	Name	Top
					Meas. Depth
BELL CANYON	3379	4292	OIL, GAS, WATER	RUSTLER	485
CHERRY CANYON	4293	5619	OIL, GAS, WATER	SALADO	988
BRUSHY CANYON	5620	7159	OIL, GAS, WATER	CASTILE	1889
BONE SPRING	7160	8160	OIL, GAS, WATER	DELAWARE	3357
BONE SPRING 1ST	8161	9077	OIL, GAS, WATER	BELL CANYON	3379
BONE SPRING 2ND	9078	9197	OIL, GAS, WATER	CHERRY CANYON	4293
				BRUSHY CANYON	5620
				BONE SPRING	7160

32. Additional remarks (include plugging procedure):

52. FORMATION (LOG) MARKERS CONTD.

1ST BONE SPRINGS 8161'M
2ND BONE SPRINGS 9078'M

Logs were mailed 8/24/18.

33. Circle enclosed attachments:

1. Electrical/Mechanical Logs (1 full set req'd.) 2. Geologic Report 3. DST Report 4. Directional Survey
5. Sundry Notice for plugging and cement verification 6. Core Analysis 7. Other:

34. I hereby certify that the foregoing and attached information is complete and correct as determined from all available records (see attached instructions):

Electronic Submission #432493 Verified by the BLM Well Information System.
For OXY USA INCORPORATED, sent to the Carlsbad
Committed to AFMSS for processing by DUNCAN WHITLOCK on 09/06/2018 (18DW0228SE)

Name (please print) DAVID STEWART

Title REGULATORY ADVISOR

Signature (Electronic Submission)

Date 08/23/2018

Title 18 U.S.C. Section 1001 and Title 43 U.S.C. Section 1212, make it a crime for any person knowingly and willfully to make to any department or agency of the United States any false, fictitious or fraudulent statements or representations as to any matter within its jurisdiction.

**** REVISED ** REVISED ** REVISED ** REVISED ** REVISED ** REVISED ** REVISED ****

Additional data for transaction #432493 that would not fit on the form

32. Additional remarks, continued

Log Header, Directional Survey (certified copy to follow), As-Drilled Amended C-102 plat & WBD are attached.

District I
1633 N. French Dr., Hobbs, NM 88240
Phone: (575) 393-6161 Fax: (575) 393-0720
District II
611 S. First St., Artesia, NM 88210
Phone: (575) 748-1283 Fax: (575) 748-9720
District III
1000 Rio Brueco Road, Aztec, NM 87410
Phone: (505) 334-6178 Fax: (505) 334-6170
District IV
1220 S. St. Francis Dr., Santa Fe, NM 87505
Phone: (505) 476-3460 Fax: (505) 476-3462

State of New Mexico
Energy, Minerals & Natural Resources Department
OIL CONSERVATION DIVISION
1220 South St. Francis Dr.
Santa Fe, NM 87505

Form C-102
Revised August 1, 2011
Submit one copy to appropriate
District Office

☒ AMENDED REPORT
(As-Drilled)

WELL LOCATION AND ACREAGE DEDICATION PLAT

API Number 30-015-44635	Pool Code 96473	Pool Name Pierce Crossing Bone Spring, East
Property Code 320631	Property Name CORRAL CANYON "36-25" FEDERAL COM	Well Number 25H
OGRID No. 16696	Operator Name OXY USA INC.	Elevation 3135.6'

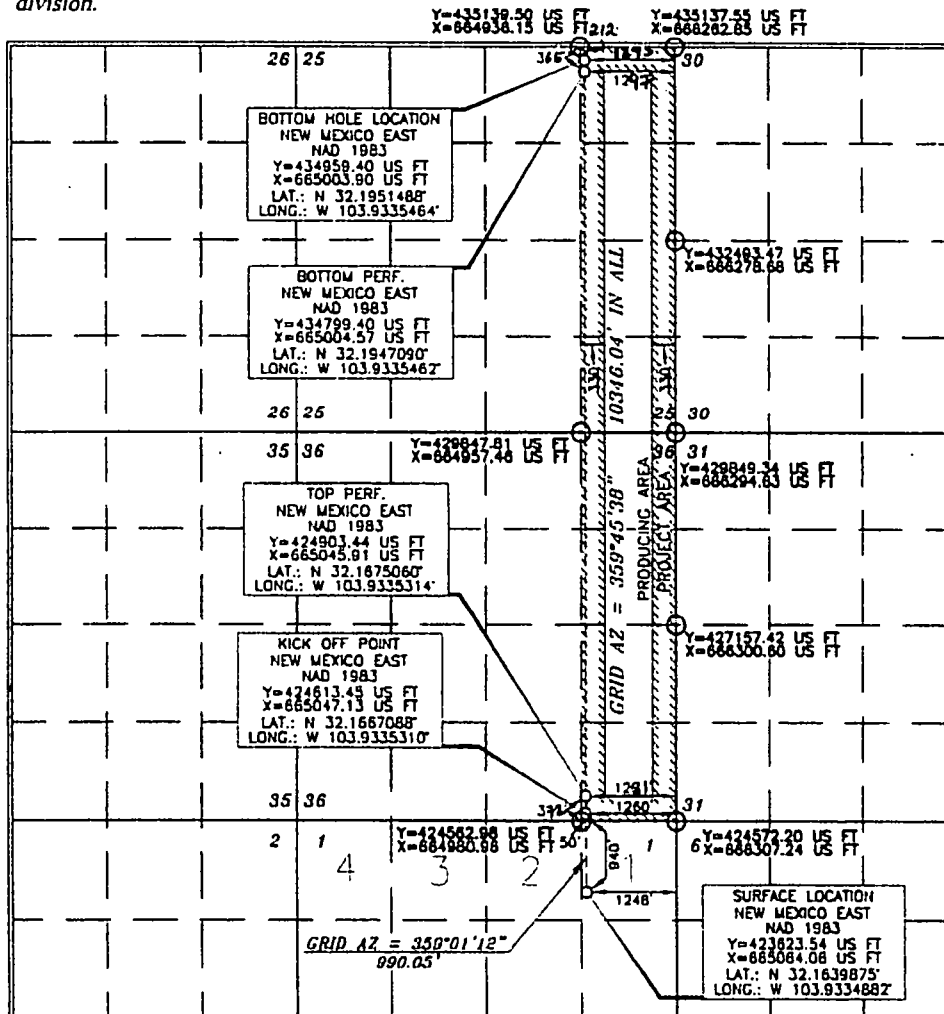
Surface Location

UL or lot no.	Section	Township	Range	Lot Idn	Feet from the	North/South line	Feet from the	East/West line	County
1	1	25 SOUTH	29 EAST, N.M.P.M.		940'	NORTH	1248'	EAST	EDDY

Bottom Hole Location If Different From Surface

UL or lot no.	Section	Township	Range	Lot Idn	Feet from the	North/South line	Feet from the	East/West line	County
A	25	24 SOUTH	29 EAST, N.M.P.M.		180' 212'	NORTH	1868' 1243'	EAST	EDDY
Dedicated Acres 320	Joint or Infill Y	Consolidation Code	Order No. NL-7682	BP- 365 FNL 1297 FEL TP- 372 FSL 1281 FEL					

No allowable will be assigned to this completion until all interests have been consolidated or a non-standard unit has been approved by the division.



OPERATOR CERTIFICATION

I hereby certify that the information contained herein is true and complete to the best of my knowledge and belief, and that this organization either owns a working interest or selected mineral interest in the land including the proposed bottom hole location or has a right to drill this well or the location pertains to a contract with an owner of such a mineral or working interest, or to a voluntary pooling agreement or a compulsory pooling order heretofore entered by the court.

Signature: *[Signature]* Date: **5/29/17**
Printed Name: **Jana Mendiola**
E-mail Address: **jana-mendiola@oxy.com**

SURVEYOR CERTIFICATION

I hereby certify that the well location shown on this plat was plotted from reliable historical surveys made by me or under my supervision and that the same is true and correct to the best of my belief.

Signature: *[Signature]* Date of Survey: **15079**
Professional Surveyor

Signature: *[Signature]* Date: **9/26/2017**
Certificate Number: **15079**