

UNITED STATES  
DEPARTMENT OF THE INTERIOR  
BUREAU OF LAND MANAGEMENT

OCD Artesia

FORM APPROVED  
OMB No. 1004-0137  
Expires: July 31, 2010

## WELL COMPLETION OR RECOMPLETION REPORT AND LOG

5. Lease Serial No. NMNM88139
6. If Indian, Allottee or Tribe Name
7. Unit or CA Agreement Name and No.
8. Lease Name and Well No. CORRAL FLY 35-26 FEDERAL COM 25H
9. API Well No. 30-015-44683-00-S1
10. Field and Pool, or Exploratory PIERCE CROSSING-BONE SPRING, E
11. Sec., T., R., M., or Block and Survey or Area Sec 2 T25S R29E Mer NMP
12. County or Parish EDDY
13. State NM
17. Elevations (DF, KB, RT, GL)* 3072 GL

1a. Type of Well ☒ Oil Well ☐ Gas Well ☐ Dry ☐ Other  
b. Type of Completion ☒ New Well ☐ Work Over ☐ Deepen ☐ Plug Back ☐ Diff. Resvr.  
Other \_\_\_\_\_

2. Name of Operator  
OXY USA INCORPORATED Contact: JANA MENDIOLA  
E-Mail: janalyn\_mendiola@oxy.com

3. Address 5 GREENWAY PLAZA SUITE 110  
HOUSTON, TX 77046-0521

3a. Phone No. (include area code)  
Ph: 432-685-5936

4. Location of Well (Report location clearly and in accordance with Federal requirements)\*

At surface Lot 1 314FNL 1277FEL 32.165671 N Lat, 103.950727 W Lon  
Sec 2 T25S R29E Mer NMP

At top prod interval reported below SESE 380FSL 1261FEL 32.167580 N Lat, 103.950670 W Lon  
Sec 26 T24S R29E Mer NMP

At total depth NENE 208FNL 1290FEL 32.195110 N Lat, 103.950650 W Lon

14. Date Spudded  
03/22/2018

15. Date T.D. Reached  
06/09/2018

16. Date Completed  
☐ D & A ☒ Ready to Prod.  
08/02/2018

18. Total Depth: MD 19378  
TVD 9084

19. Plug Back T.D.: MD 19317  
TVD 9084

20. Depth Bridge Plug Set: MD  
TVD

21. Type Electric & Other Mechanical Logs Run (Submit copy of each)  
MUDLOG

22. Was well cored? ☒ No ☐ Yes (Submit analysis)  
Was DST run? ☒ No ☐ Yes (Submit analysis)  
Directional Survey? ☐ No ☒ Yes (Submit analysis)

## 23. Casing and Liner Record (Report all strings set in well)

Hole Size	Size/Grade	Wt. (#/ft.)	Top (MD)	Bottom (MD)	Stage Cementer Depth	No. of Sk. & Type of Cement	Slurry Vol. (BBL)	Cement Top*	Amount Pulled
14.750	10.750 J55	45.5	0	436		490	118	0	
9.875	7.625 L80	26.4	0	8355	3337	1611	565	0	
6.750	5.500 P110	20.0	0	19363		807	200	6160	

## 24. Tubing Record

Size	Depth Set (MD)	Packer Depth (MD)	Size	Depth Set (MD)	Packer Depth (MD)	Size	Depth Set (MD)	Packer Depth (MD)

## 25. Producing Intervals

## 26. Perforation Record

Formation	Top	Bottom	Perforated Interval	Size	No. Holes	Perf. Status
A) BONE SPRING 2ND	9358	19234	9358 TO 19234	0.370	1200	ACTIVE
B)						
C)						
D)						

## 27. Acid, Fracture, Treatment, Cement Squeeze, Etc.

Depth Interval	Amount and Type of Material
9358 TO 19234	12960360G SLICKWATER + 4998G 7.5% HCL ACID W/ 15026205# SAND

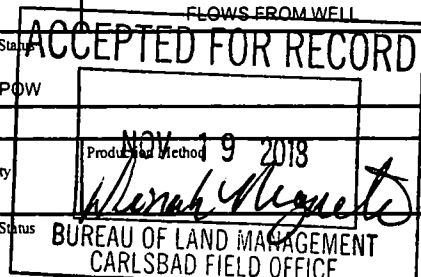
RECEIVED

NOV 28 2018

## 28. Production - Interval A

DISTRICT II-ARTESIA O.C.D.

Date First Produced	Test Date	Hours Tested	Test Production	Oil BBL	Gas MCF	Water BBL	Oil Gravity Corr. API	Gas Gravity	Production Method
08/04/2018	08/09/2018	24	→	3469.0	6016.0	5232.0			FLOWS FROM WELL
Choke Size	Tbg. Press. Flwg.	Csg. Press.	24 Hr. Rate	Oil BBL	Gas MCF	Water BBL	Gas:Oil Ratio	Well Status	
92/128	SI	1500.0	→	3469	6016	5232	1734	POW	
28a. Production - Interval B									
Date First Produced	Test Date	Hours Tested	Test Production	Oil BBL	Gas MCF	Water BBL	Oil Gravity Corr. API	Gas Gravity	Production Method
			→						
Choke Size	Tbg. Press. Flwg.	Csg. Press.	24 Hr. Rate	Oil BBL	Gas MCF	Water BBL	Gas:Oil Ratio	Well Status	
	SI		→						



(See Instructions and spaces for additional data on reverse side)

ELECTRONIC SUBMISSION #440724 VERIFIED BY THE BLM WELL INFORMATION SYSTEM

\*\* BLM REVISED \*\* BLM REVISED \*\* BLM REVISED \*\* BLM REVISED \*\* BLM REVISED \*\*

Reclamation Due: 2/2/2019

## 28b. Production - Interval C

Date First Produced	Test Date	Hours Tested	Test Production	Oil BBL	Gas MCF	Water BBL	Oil Gravity Corr. API	Gas Gravity	Production Method
			→						
Choke Size	Tbg. Press. Flwg. SI	Csg. Press.	24 Hr. Rate	Oil BBL	Gas MCF	Water BBL	Gas:Oil Ratio	Well Status	
			→						

## 28c. Production - Interval D

Date First Produced	Test Date	Hours Tested	Test Production	Oil BBL	Gas MCF	Water BBL	Oil Gravity Corr. API	Gas Gravity	Production Method
			→						
Choke Size	Tbg. Press. Flwg. SI	Csg. Press.	24 Hr. Rate	Oil BBL	Gas MCF	Water BBL	Gas:Oil Ratio	Well Status	
			→						

29. Disposition of Gas(Sold, used for fuel, vented, etc.)  
SOLD

## 30. Summary of Porous Zones (Include Aquifers):

Show all important zones of porosity and contents thereof: Cored intervals and all drill-stem tests, including depth interval tested, cushion used, time tool open, flowing and shut-in pressures and recoveries.

## 31. Formation (Log) Markers

Formation	Top	Bottom	Descriptions, Contents, etc.	Name	Top Meas. Depth
BELL CANYON	3302	4122	OIL, GAS, WATER	RUSTLER	296
CHERRY CANYON	4123	5481	OIL, GAS, WATER	SALADO	696
BRUSHY CANYON	5482	6956	OIL, GAS, WATER	CASTILE	1792
BONE SPRING	6957	7888	OIL, GAS, WATER	DELAWARE	3251
BONE SPRING 1ST	7889	8825	OIL, GAS, WATER	BELL CANYON	3302
BONE SPRING 2ND	8826	9084	OIL, GAS, WATER	CHERRY CANYON	4123
				BRUSHY CANYON	5482
				BONE SPRING	6957

## 32. Additional remarks (include plugging procedure):

## 52. FORMATION (LOG) MARKERS CONTD.

1ST BONE SPRINGS 7889'M  
2ND BONE SPRINGS 8826'M

Logs were mailed 10/23/18.

## 33. Circle enclosed attachments:

- |   |                    |               |                       |
|---|--------------------|---------------|-----------------------|
| 1. Electrical/Mechanical Logs (1 full set req'd.)     | 2. Geologic Report | 3. DST Report | 4. Directional Survey |
| 5. Sundry Notice for plugging and cement verification | 6. Core Analysis   | 7 Other:      |                       |

## 34. I hereby certify that the foregoing and attached information is complete and correct as determined from all available records (see attached instructions):

Electronic Submission #440724 Verified by the BLM Well Information System.  
For OXY USA INCORPORATED, sent to the Carlsbad  
Committed to AFMSS for processing by DUNCAN WHITLOCK on 10/23/2018 (19DW0036SE)

Name (please print) DAVID STEWART

Title REGULATORY ADVISOR

Signature (Electronic Submission)

Date 10/22/2018

Title 18 U.S.C. Section 1001 and Title 43 U.S.C. Section 1212, make it a crime for any person knowingly and willfully to make to any department or agency of the United States any false, fictitious or fraudulent statements or representations as to any matter within its jurisdiction.

**Additional data for transaction #440724 that would not fit on the form**

**32. Additional remarks, continued**

Log Header, Directional Survey, As-Drilled Amended C-102 plat & WBD are attached.

District I  
1635 N. French Dr., Hobbs, NM 88240  
Phone: (505) 393-6161 Fax: (505) 393-0720  
District II  
811 S. First St., Artesia, NM 88210  
Phone: (505) 748-1283 Fax: (505) 748-9720  
District III  
1000 Rio Blanco Road, Aztec, NM 87410  
Phone: (505) 334-6178 Fax: (505) 334-6170  
District IV  
1220 S. St. Francis Dr., Santa Fe, NM 87503  
Phone: (505) 476-3460 Fax: (505) 476-3463

State of New Mexico  
Energy, Minerals & Natural Resources Department  
OIL CONSERVATION DIVISION  
1220 South St. Francis Dr.  
Santa Fe, NM 87505

Form C-102  
Revised August 1, 2011  
Submit one copy to appropriate  
District Office

☒ AMENDED REPORT  
(As-Drilled)

WELL LOCATION AND ACREAGE DEDICATION PLAT

API Number <b>30-015-44683</b>	Pool Code <b>96473</b>	Pool Name <b>Pierce Crossing Bone Spring, East</b>
Property Code <b>320767</b>	Property Name <b>CORRAL FLY "35-26" FEDERAL COM</b>	Well Number <b>25H</b>
OGRID No. <b>16696</b>	Operator Name <b>OXY USA INC.</b>	Elevation <b>3071.9'</b>

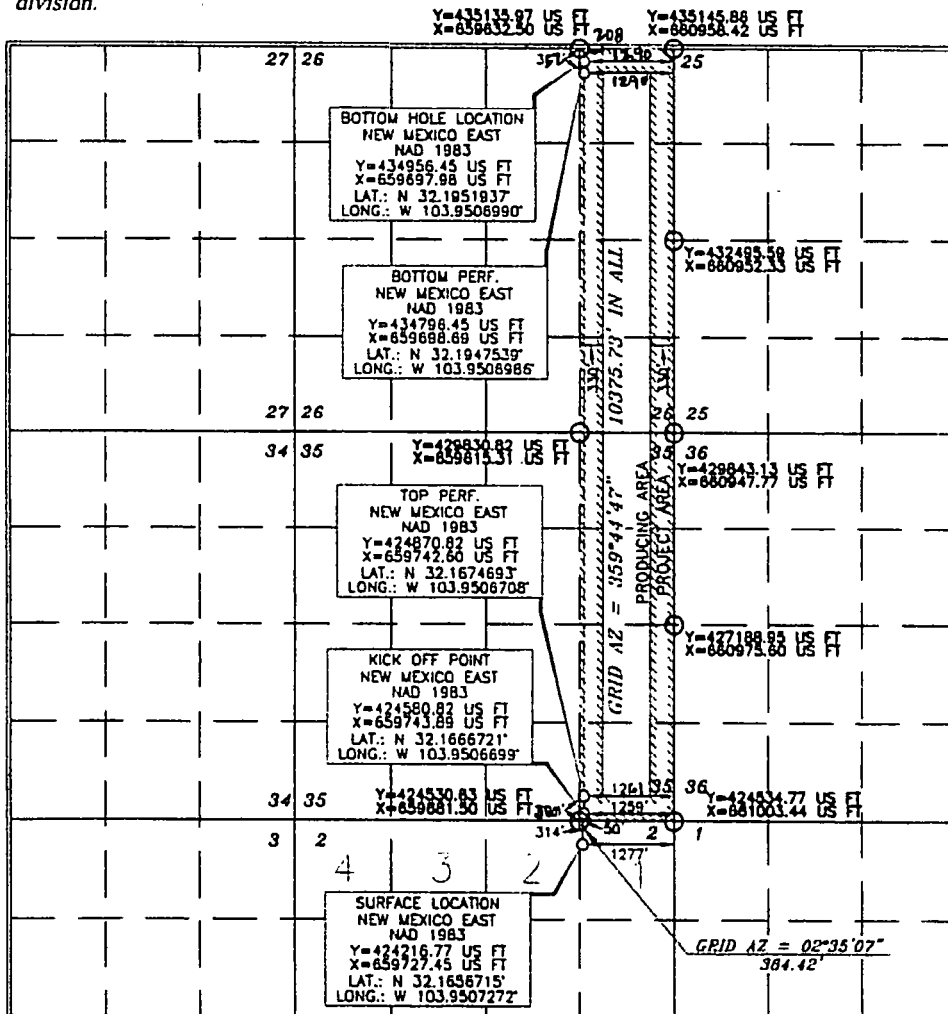
Surface Location

UL or lot no.	Section	Township	Range	Lot Idn	Feet from the	North/South line	Feet from the	East/West line	County
1	2	25 SOUTH	29 EAST, N.M.P.M.		314'	NORTH	1277'	EAST	EDDY

Bottom Hole Location If Different From Surface

UL or lot no.	Section	Township	Range	Lot Idn	Feet from the	North/South line	Feet from the	East/West line	County
A	26	24 SOUTH	29 EAST, N.M.P.M.		789' 308'	NORTH	7290' 7290'	EAST	EDDY
Dedicated Acres <b>320</b>	Joint or Infill <b>Y</b>	Consolidation Code	Order No. <b>NSL-7488</b>	<b>BP- 352 FNL 1290 FEL</b>					
				<b>TP- 380 FSL 1261 FEL</b>					

No allowable will be assigned to this completion until all interests have been consolidated or a non-standard unit has been approved by the division.



OPERATOR CERTIFICATION

I hereby certify that the information contained herein is true and complete to the best of my knowledge and belief, and that this organization either owns a working interest or undivided mineral interest in the land including the proposed bottom hole location or has a right in and to this well as this location pertains to a contract with an owner of such a mineral or working interest, or to a voluntary pooling agreement or a compulsory pooling order heretofore entered by the division.

Signature: *[Signature]* Date: **7/26/18**  
Printed Name: **Jana Mendiola**  
E-mail Address: **jana@mendiola-oxy.com**

SURVEYOR CERTIFICATION

I hereby certify that the well location shown on this plat was plotted from the data of actual surveys made by me or under my supervision, and that the same is true and correct to the best of my belief.

Signature: *[Signature]* Date of Survey: **MAY 16, 2017**  
Professional Surveyor: **15079**

Signature: *[Signature]* Certificate Number: **15079**