

UNITED STATES
DEPARTMENT OF THE INTERIOR
BUREAU OF LAND MANAGEMENT

OCD Artesia

FORM APPROVED
OMB No. 1004-0137
Expires: July 31, 2010

WELL COMPLETION OR RECOMPLETION REPORT AND LOG

5. Lease Serial No.
NMNM88139

6. If Indian, Allottee or Tribe Name

7. Unit or CA Agreement Name and No.

8. Lease Name and Well No.
CORRAL FLY 35-26 FEDERAL COM 24H

9. API Well No.
30-015-44705-00-S1

10. Field and Pool, or Exploratory
PIERCE CROSSING-BONE SPRING, E

11. Sec., T., R., M., or Block and Survey
or Area Sec 2 T25S R29E Mer NMP

12. County or Parish
EDDY

13. State
NM

14. Date Spudded
03/22/2018

15. Date T.D. Reached
05/28/2018

16. Date Completed
☐ D & A ☒ Ready to Prod.
08/02/2018

17. Elevations (DF, KB, RT, GL)*
3072 GL

18. Total Depth: MD 19671
TVD 9056

19. Plug Back T.D.: MD 19602
TVD 9054

20. Depth Bridge Plug Set: MD
TVD

21. Type Electric & Other Mechanical Logs Run (Submit copy of each)
MUDLOG CBL

22. Was well cored? ☒ No ☐ Yes (Submit analysis)
Was DST run? ☒ No ☐ Yes (Submit analysis)
Directional Survey? ☐ No ☒ Yes (Submit analysis)

23. Casing and Liner Record (Report all strings set in well)

Hole Size	Size/Grade	Wt. (#/ft.)	Top (MD)	Bottom (MD)	Stage Cementer Depth	No. of Sk. & Type of Cement	Slurry Vol. (BBL)	Cement Top*	Amount Pulled
14.750	10.750 J55	45.5	0	442		490	118	0	
9.875	7.625 L80	26.4	0	8381	3344	1841	632	0	
6.750	5.500 P110	20.0	0	19651		821	203	7894	

24. Tubing Record

Size	Depth Set (MD)	Packer Depth (MD)	Size	Depth Set (MD)	Packer Depth (MD)	Size	Depth Set (MD)	Packer Depth (MD)

25. Producing Intervals

Formation	Top	Bottom	Perforated Interval	Size	No. Holes	Perf. Status
A) BONE SPRING 2ND	9643	19519	9643 TO 19519	0.370	1200	ACTIVE
B)						
C)						
D)						

27. Acid, Fracture, Treatment, Cement Squeeze, Etc.

Depth Interval	Amount and Type of Material
9643 TO 19519	12935076G SLICKWATER + 4998G 7.5% HCL ACID W/ 15064723# SAND

DISTRICT II-ARTESIA O.C.D.

28. Production - Interval A

Date First Produced 08/04/2018	Test Date 08/21/2018	Hours Tested 24	Test Production →	Oil BBL 4247.0	Gas MCF 6675.0	Water BBL 3437.0	Oil Gravity Corr. API	Gas Gravity	Production Method FLOWS FROM WELL
Choke Size 82/128	Tbg. Press. Flwg. SI	Csg. Press. 1300.0	24 Hr. Rate →	Oil BBL 4247	Gas MCF 6675	Water BBL 3437	Gas:Oil Ratio 1572	Well Status POW	<div style="border: 2px solid black; padding: 5px; text-align: center;"> <p>ACCEPTED FOR RECORD</p> <p>NOV 18 2018</p> <p><i>[Signature]</i></p> <p>BUREAU OF LAND MANAGEMENT CARLSBAD FIELD OFFICE</p> </div>

28a. Production - Interval B

Date First Produced	Test Date	Hours Tested	Test Production	Oil BBL	Gas MCF	Water BBL	Oil Gravity Corr. API	Gas Gravity	Production Method
			→						
Choke Size	Tbg. Press. Flwg. SI	Csg. Press.	24 Hr. Rate	Oil BBL	Gas MCF	Water BBL	Gas:Oil Ratio	Well Status	
			→						

(See Instructions and spaces for additional data on reverse side)

ELECTRONIC SUBMISSION #440201 VERIFIED BY THE BLM WELL INFORMATION SYSTEM

** BLM REVISED ** BLM REVISED ** BLM REVISED ** BLM REVISED ** BLM REVISED **

Reclamation Due: 2/2/2019

28b. Production - Interval C

Date First Produced	Test Date	Hours Tested	Test Production	Oil BBL	Gas MCF	Water BBL	Oil Gravity Corr. API	Gas Gravity	Production Method
			→						
Choke Size	Tbg. Press. Flwg. SI	Csg. Press.	24 Hr. Rate	Oil BBL	Gas MCF	Water BBL	Gas:Oil Ratio	Well Status	
			→						

28c. Production - Interval D

Date First Produced	Test Date	Hours Tested	Test Production	Oil BBL	Gas MCF	Water BBL	Oil Gravity Corr. API	Gas Gravity	Production Method
			→						
Choke Size	Tbg. Press. Flwg. SI	Csg. Press.	24 Hr. Rate	Oil BBL	Gas MCF	Water BBL	Gas:Oil Ratio	Well Status	
			→						

29. Disposition of Gas(Sold, used for fuel, vented, etc.)
SOLD

30. Summary of Porous Zones (Include Aquifers):

Show all important zones of porosity and contents thereof: Cored intervals and all drill-stem tests, including depth interval tested, cushion used, time tool open, flowing and shut-in pressures and recoveries.

31. Formation (Log) Markers

Formation	Top	Bottom	Descriptions, Contents, etc.	Name	Top
					Meas. Depth
BELL CANYON	3296	4118	OIL, GAS, WATER	RUSTLER	294
CHERRY CANYON	4119	5489	OIL, GAS, WATER	SALADO	696
BRUSHY CANYON	5490	6997	OIL, GAS, WATER	CASTILE	1785
BONE SPRING	6998	7937	OIL, GAS, WATER	DELAWARE	3253
BONE SPRING 1ST	7938	8815	OIL, GAS, WATER	BELL CANYON	3296
BONE SPRING 2ND	8816	9056	OIL, GAS, WATER	CHERRY CANYON	4119
				BRUSHY CANYON	5490
				BONE SPRING	6998

32. Additional remarks (include plugging procedure):
52. FORMATION (LOG) MARKERS CONTD.

1ST BONE SPRINGS 7938'M
2ND BONE SPRINGS 8816'M

Logs were mailed 10/18/18.

33. Circle enclosed attachments:

- | | | | |
|---|--------------------|---------------|-----------------------|
| 1. Electrical/Mechanical Logs (1 full set req'd.) | 2. Geologic Report | 3. DST Report | 4. Directional Survey |
| 5. Sundry Notice for plugging and cement verification | 6. Core Analysis | 7 Other: | |

34. I hereby certify that the foregoing and attached information is complete and correct as determined from all available records (see attached instructions):

Electronic Submission #440201 Verified by the BLM Well Information System.
For OXY USA INCORPORATED, sent to the Carlsbad
Committed to AFMSS for processing by DUNCAN WHITLOCK on 10/17/2018 (19DW0031SE)

Name (please print) DAVID STEWART

Title REGULATORY ADVISOR

Signature (Electronic Submission)

Date 10/17/2018

Title 18 U.S.C. Section 1001 and Title 43 U.S.C. Section 1212, make it a crime for any person knowingly and willfully to make to any department or agency of the United States any false, fictitious or fraudulent statements or representations as to any matter within its jurisdiction.

**** REVISED ** REVISED ** REVISED ** REVISED ** REVISED ** REVISED ** REVISED ** REVISED ****

Additional data for transaction #440201 that would not fit on the form

32. Additional remarks, continued

Log Header, Directional Survey, As-Drilled Amended C-102 plat & WBD are attached.

District I
1625 N. French Dr., Hobbs, NM 88240
Phone: (575) 393-6161 Fax: (575) 393-0720
District II
811 S. First St., Artesia, NM 88210
Phone: (575) 748-1243 Fax: (575) 748-9720
District III
1000 Rio Brueco Road, Aztec, NM 87410
Phone: (505) 334-6178 Fax: (505) 334-6170
District IV
1220 S. St. Francis Dr., Santa Fe, NM 87503
Phone: (505) 476-3460 Fax: (505) 476-3462

State of New Mexico
Energy, Minerals & Natural Resources Department
OIL CONSERVATION DIVISION
1220 South St. Francis Dr.
Santa Fe, NM 87505

Form C-102
Revised August 1, 2011
Submit one copy to appropriate
District Office

☒ AMENDED REPORT
(As-Drilled)

WELL LOCATION AND ACREAGE DEDICATION PLAT

API Number 30-015-44705	Pool Code 96473	Pool Name Pierce Crossing Bone Spring, East
Property Code 320767	Property Name CORRAL FLY "35-26" FEDERAL COM	Well Number 24H
OGRID No. 16696	Operator Name OXY USA INC.	Elevation 3072.1'

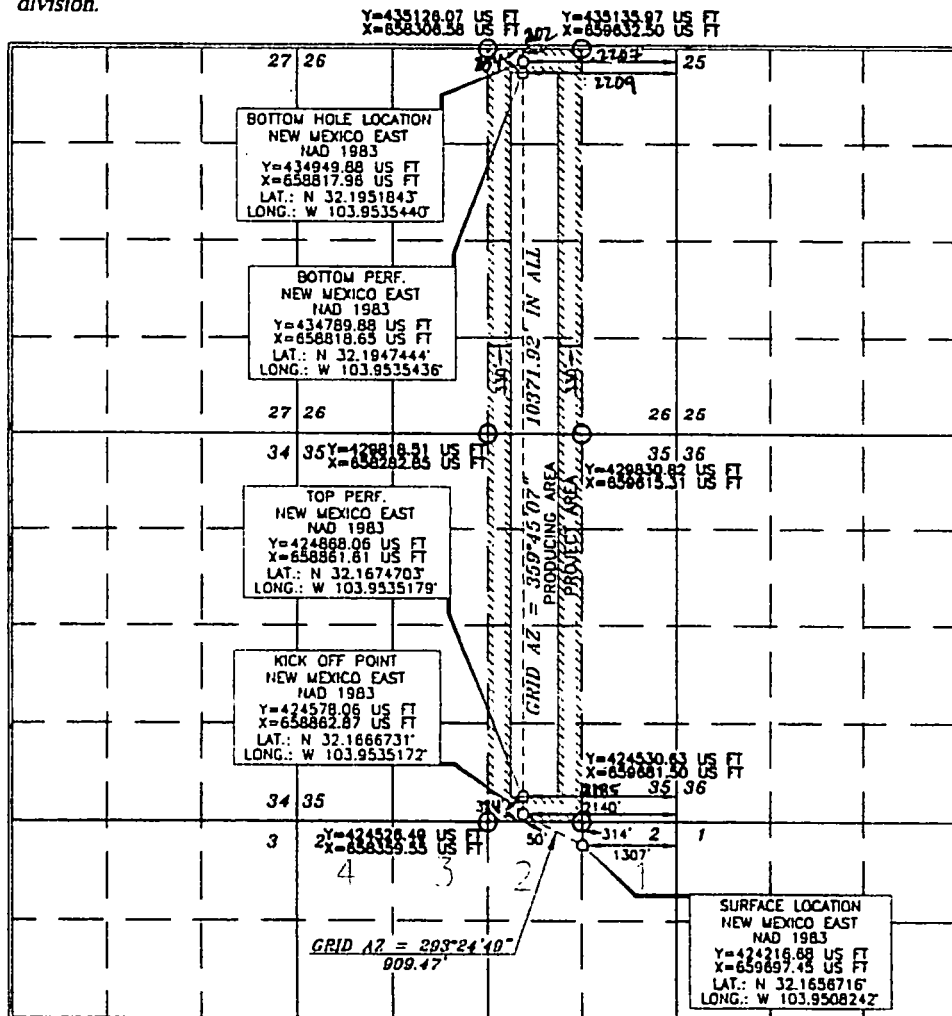
Surface Location

UL or lot no.	Section	Township	Range	Lot Idn	Feet from the	North/South line	Feet from the	East/West line	County
1	2	25 SOUTH	29 EAST, N.M.P.M.		314'	NORTH	1307'	EAST	EDDY

Bottom Hole Location If Different From Surface

UL or lot no.	Section	Township	Range	Lot Idn	Feet from the	North/South line	Feet from the	East/West line	County
B	26	24 SOUTH	29 EAST, N.M.P.M.		180' 202'	NORTH	314' 325'	EAST	EDDY
Dedicated Acres 320	Joint or Infill Y	Consolidation Code	Order No. BP- 354 FNL 2209 FEL TP- 384 FSL 2185 FEL						

No allowable will be assigned to this completion until all interests have been consolidated or a non-standard unit has been approved by the division.



OPERATOR CERTIFICATION

I hereby certify that the information contained herein is true and complete to the best of my knowledge and belief, and that this organization either owns a working interest or undivided mineral interest in the land including the proposed bottom hole location or has a right to drill this well at this location pursuant to a contract with an owner of such a mineral or working interest, or to a voluntary pooling agreement or a compulsory pooling order.

Signature: Jana Mendiola Date: 7/26/18
Printed Name: Jana Mendiola
E-mail Address: janalyn_mendiola@oxy.com

SURVEYOR CERTIFICATION

I hereby certify that the well location shown on this plat was plotted from field notes of actual surveys made by me or under my supervision, and that the same is true and correct to the best of my belief.

Date of Survey: MAY 15, 2017
Signature and Seal of Professional Surveyor: Terry J. Reed Certificate Number: 15079