

JAN 03 2019

District I  
1625 N. French Dr., Hobbs, NM 88240  
Phone: (575) 393-6161 Fax: (575) 393-0720  
District II  
811 S. First St., Artesia, NM 88210  
Phone: (575) 748-1283 Fax: (575) 748-9720  
District III  
1000 Rio Pecos Road, Aztec, NM 87410  
Phone: (505) 334-6178 Fax: (505) 334-6170  
District IV  
1220 S. St. Francis Dr., Santa Fe, NM 87505  
Phone: (505) 476-3460 Fax: (505) 476-3462

State of New Mexico  
Energy, Minerals & Natural Resources Department  
OIL CONSERVATION DIVISION  
1220 South St. Francis Dr.  
Santa Fe, NM 87505

RECEIVED

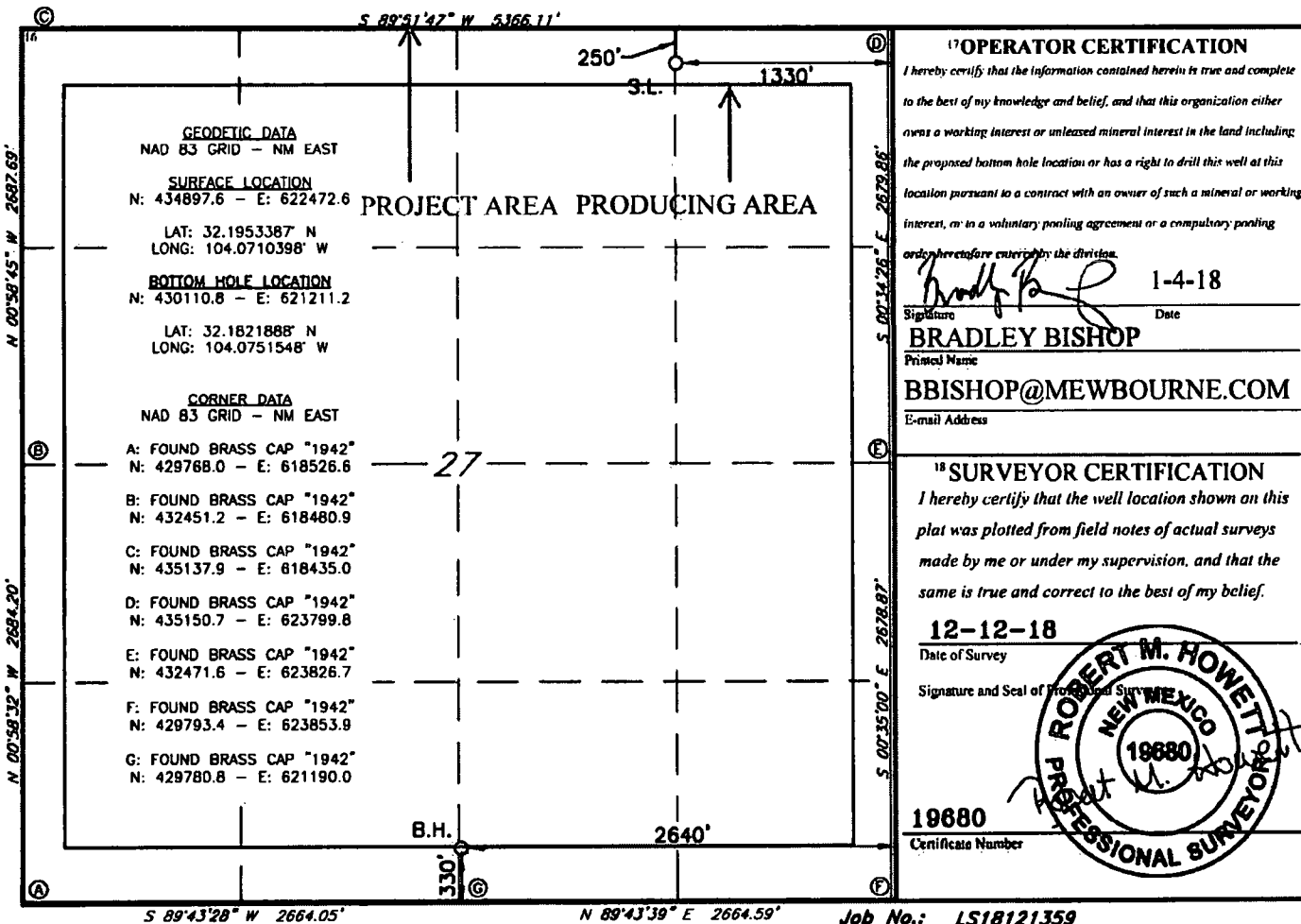
Form C-102  
Revised August 1, 2011  
Submit one copy to appropriate  
District Office

AMENDED REPORT

WELL LOCATION AND ACREAGE DEDICATION PLAT

<sup>1</sup> API Number <b>30-015-41579</b>		<sup>2</sup> Pool Code <b>98220</b>		<sup>3</sup> Pool Name <b>PURPLE SAGE; WOLFCAMP GAS</b>					
<sup>4</sup> Property Code <b>323067</b>		<sup>5</sup> Property Name <b>ROCK SPUR 27 WOBO STATE COM</b>						<sup>6</sup> Well Number <b>4H</b>	
<sup>7</sup> GRID NO. <b>14744</b>		<sup>8</sup> Operator Name <b>MEWBOURNE OIL COMPANY</b>						<sup>9</sup> Elevation <b>2957'</b>	
<sup>10</sup> Surface Location									
UL or lot no. <b>A</b>	Section <b>27</b>	Township <b>24S</b>	Range <b>28E</b>	Lot Idn	Feet from the <b>250</b>	North/South line <b>NORTH</b>	Feet from the <b>1330</b>	East/West line <b>EAST</b>	County <b>EDDY</b>
<sup>11</sup> Bottom Hole Location If Different From Surface									
UL or lot no. <b>0</b>	Section <b>27</b>	Township <b>24S</b>	Range <b>28E</b>	Lot Idn	Feet from the <b>330</b>	North/South line <b>SOUTH</b>	Feet from the <b>2640</b>	East/West line <b>EAST</b>	County <b>EDDY</b>
<sup>12</sup> Dedicated Acres <b>640</b>		<sup>13</sup> Joint or Infill		<sup>14</sup> Consolidation Code		<sup>15</sup> Order No.			

No allowable will be assigned to this completion until all interest have been consolidated or a non-standard unit has been approved by the division.



RWP 1-23-19