

See COA at bottom of page!

**District I**  
1625 N. French Dr., Hobbs, NM 88240  
Phone: (575) 393-6161 Fax: (575) 393-0720  
**District II**  
811 S. First St., Artesia, NM 88210  
Phone: (575) 748-1283 Fax: (575) 748-9720  
**District III**  
1000 Rio Brazos Road, Aztec, NM 87410  
Phone: (505) 334-6178 Fax: (505) 334-6170  
**District IV**  
1220 S. St. Francis Dr., Santa Fe, NM 87505  
Phone: (505) 476-3460 Fax: (505) 476-3462

State of New Mexico  
Energy Minerals and Natural Resources  
Oil Conservation Division  
1220 South St. Francis Dr.  
Santa Fe, NM 87505

NM OIL CONSERVATION  
ARTESIA DISTRICT  
AMENDED REPORT  
JAN 10 2019  
RECEIVED

**APPLICATION FOR PERMIT TO DRILL, RE-ENTER, DEEPEN, PLUGBACK, OR ADD A ZONE**

<sup>1</sup> Operator Name and Address Probitry SWD, LLC PO Box 7307 Midland, TX 79708		<sup>2</sup> OGRID Number 296278
<sup>4</sup> Property Code 324928 (TBD)		<sup>3</sup> APN Number 30-015-45671
<sup>5</sup> Property Name Mac-Brant West SWD		<sup>6</sup> Well No. 1

**7. Surface Location**

(To be verified by field survey)

UL - Lot	Section	Township	Range	Lot Idn	Feet from	N/S Line	Feet From	E/W Line	County
G	28	24S	29E		2360	FNL	1960	FEL	EDDY

**8. Proposed Bottom Hole Location**

(To be verified by field survey)

UL - Lot	Section	Township	Range	Lot Idn	Feet from	N/S Line	Feet From	E/W Line	County
G	28	24S	29E		2360	FNL	1960	FEL	EDDY

**9. Pool Information**

Pool Name	Pool Code
SWD; Devonian-Silurian	97869

**Additional Well Information**

<sup>11</sup> Work Type N	<sup>12</sup> Well Type SWD	<sup>13</sup> Cable/Rotary R	<sup>14</sup> Lease Type P	<sup>15</sup> Ground Level Elevation 2929'
<sup>16</sup> Multiple No	<sup>17</sup> Proposed Depth 16,500'	<sup>18</sup> Formation Devonian	<sup>19</sup> Contractor TBD	<sup>20</sup> Spud Date 3/15/2019
Depth to Ground water 21' avg		Distance from nearest fresh water well 2915'		Distance to nearest surface water 750'

☒ We will be using a closed-loop system in lieu of lined pits


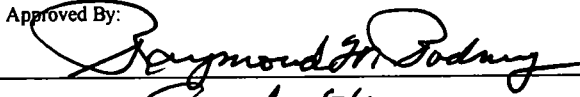
**21. Proposed Casing and Cement Program**

Type	Hole Size	Casing Size	Casing Weight/ft	Setting Depth	Sacks of Cement	Estimated TOC
Surface	26.5"	20.0"	94.0 lb/ft	350'	1050	SURFACE
Intermdt	17.5"	13.375"	68.0 lb/ft	3280'	1600	SURFACE
Production	12.25"	9.625"	53.5 lb/ft	11,000'	2350	SURFACE
Liner	8.5"	7.625"	39.0 lb/ft	10,700'-15,000'	450	TOL
OH	6.5"			15,000' - 16,500'		

**Casing/Cement Program: Additional Comments**

**22. Proposed Blowout Prevention Program**

Type	Working Pressure	Test Pressure	Manufacturer
Double Hydraulic/Blinds, Pipe	10000	10000	Hydriil, Cameron or Equivalent

<sup>23</sup> I hereby certify that the information given above is true and complete to the best of my knowledge and belief. I further certify that I have complied with 19.15.14.9 (A) NMAC <input type="checkbox"/> and/or 19.15.14.9 (B) NMAC <input type="checkbox"/> , if applicable. Signature: 		OIL CONSERVATION DIVISION	
Printed name: Ben Stone		Approved By: 	
Title: Agent for Probitry SWD, LLC		Title: Geologist	
E-mail Address: ben@sosconsulting.us		Approved Date: 1-31-19 Expiration Date: 1-31-21	
Date: 1/10/2019 Phone: 903-488-9850		Conditions of Approval Attached <i>Approved C-108</i>	

*required before Spudding well.*

DISTRICT I  
1625 N. French Dr., Hobbs, NM 88240  
Phone: (575) 393-6161 Fax: (575) 393-0720

DISTRICT II  
811 S. First St., Artesia, NM 88210  
Phone: (575) 748-1283 Fax: (575) 748-9720

DISTRICT III  
1000 Rio Brazos Road, Aztec, NM 87410  
Phone: (505) 334-6178 Fax: (505) 334-6170

DISTRICT IV  
1220 S. St. Francis Dr., Santa Fe, NM 87505  
Phone: (505) 476-3460 Fax: (505) 476-3462

State of New Mexico  
Energy, Minerals & Natural Resources Department  
OIL CONSERVATION DIVISION  
1220 South St. Francis Dr.  
Santa Fe, New Mexico 87505

Form C-102  
Revised August 1, 2011  
Submit to appropriate District Office

NEW MEXICO OIL CONSERVATION  
ARTESIA DISTRICT

JAN 10 2019  
AMENDED REPORT

WELL LOCATION AND ACREAGE DEDICATION PLAT

API Number 30.015- <b>45671</b>	Pool Code 97869	Pool Name SWD; Devonian-Silurian
Property Code <b>324928</b>	Property Name <b>MAC-BRANT WEST SWD</b>	Well Number <b>1</b>
OGRID No. 296278	Operator Name <b>PROBITY SWD, LLC.</b>	Elevation <b>2929'</b>

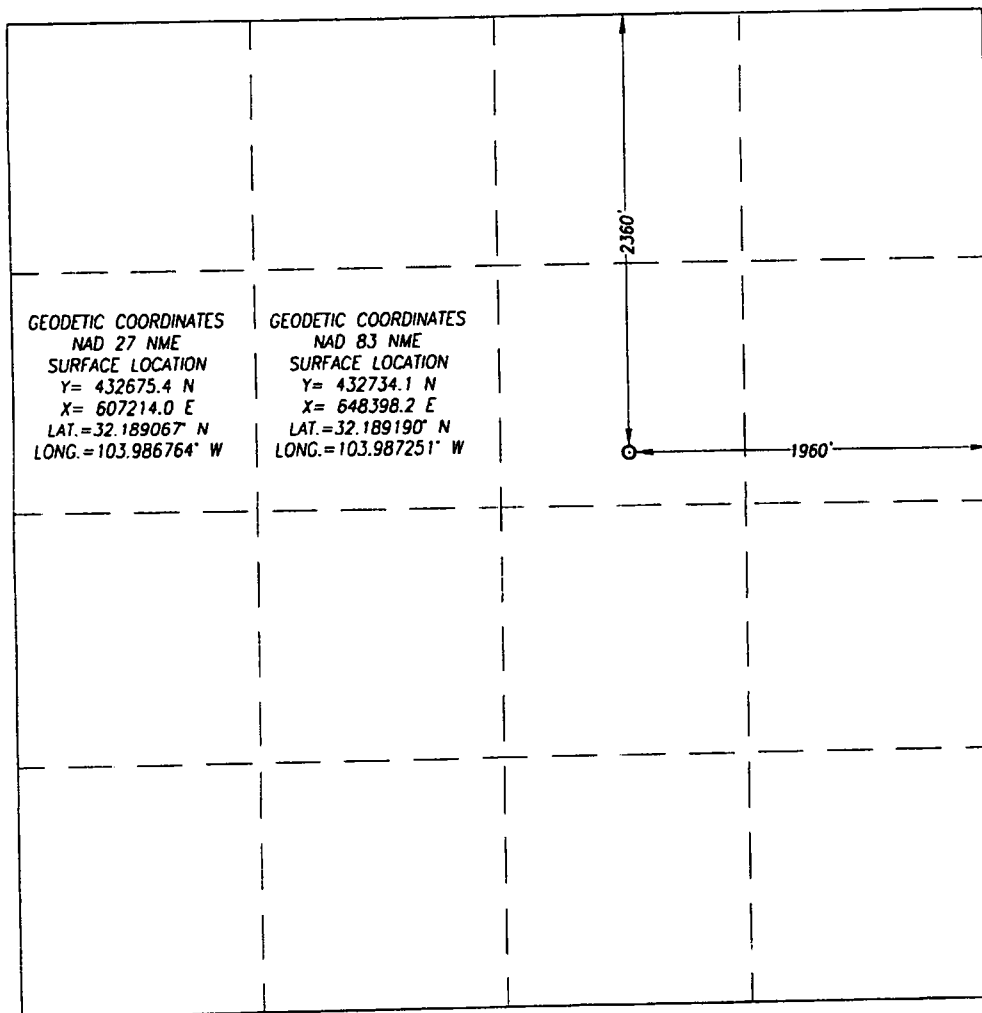
Surface Location

UL or lot No.	Section	Township	Range	Lot Idn	Feet from the	North/South line	Feet from the	East/West line	County
G	28	24-S	29-E		2360	NORTH	1960	EAST	EDDY

Bottom Hole Location If Different From Surface

UL or lot No.	Section	Township	Range	Lot Idn	Feet from the	North/South line	Feet from the	East/West line	County
Dedicated Acres	Joint or Infill	Consolidation Code	Order No.						

NO ALLOWABLE WILL BE ASSIGNED TO THIS COMPLETION UNTIL ALL INTERESTS HAVE BEEN CONSOLIDATED OR A NON-STANDARD UNIT HAS BEEN APPROVED BY THE DIVISION



OPERATOR CERTIFICATION

I hereby certify that the information herein is true and complete to the best of my knowledge and belief, and that this organization either owns a working interest or unleased mineral interest in the land including the proposed bottom hole location or has a right to drill this well at this location pursuant to a contract with an owner of such mineral or working interest, or to a voluntary pooling agreement or a compulsory pooling order heretofore entered by the division.

*Ben Stone* 1/10/2019  
Signature Date

Ben Stone  
Printed Name

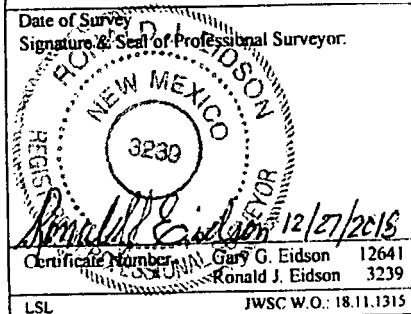
ben@sosconsulting.us  
E-mail Address

SURVEYOR CERTIFICATION

I hereby certify that the well location shown on this plat was plotted from field notes of actual surveys made by me or under my supervision, and that the same is true and correct to the best of my belief.

DECEMBER 11, 2018

Date of Survey  
Signature & Seal of Professional Surveyor.

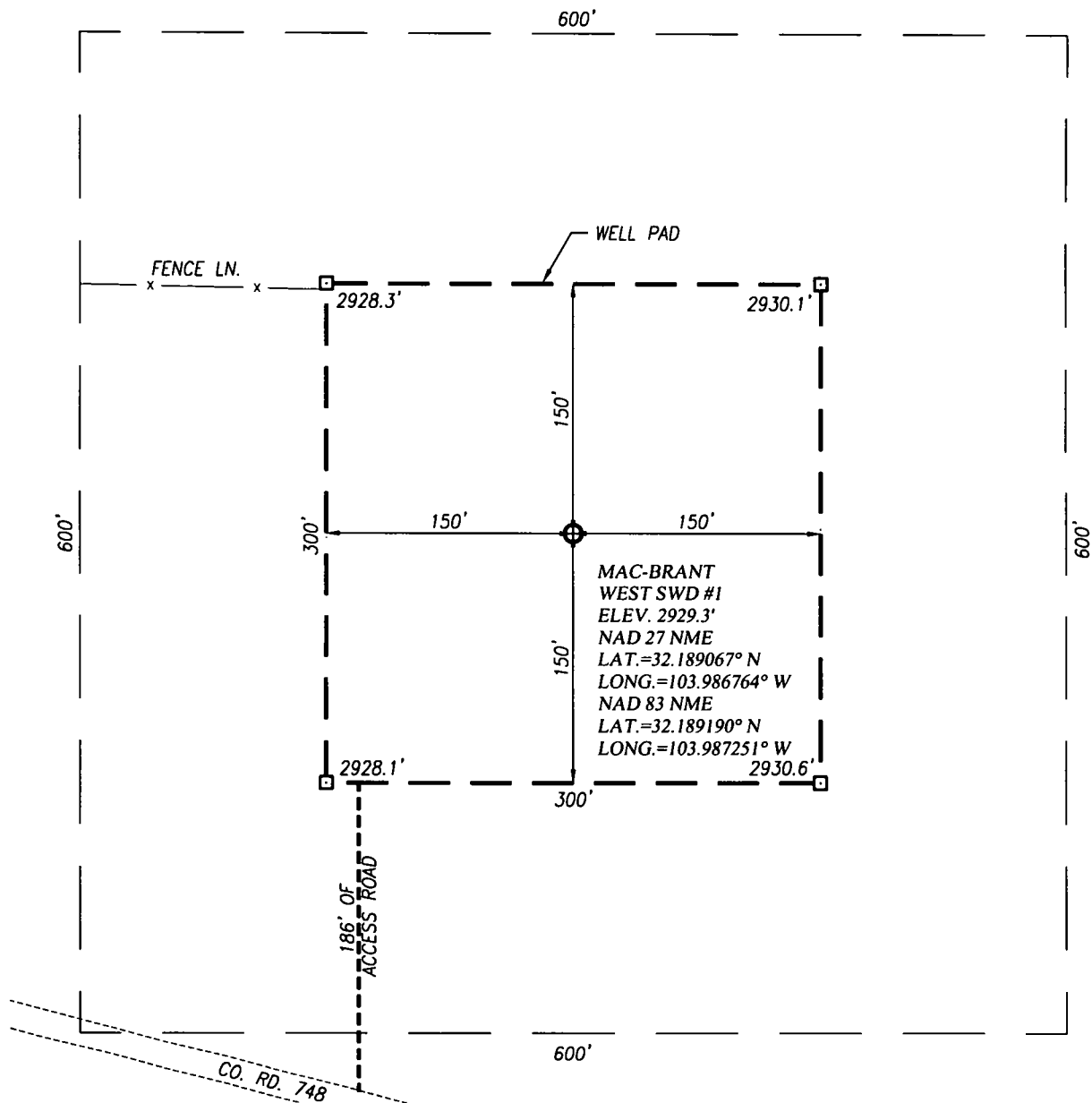


Certificate Number Gary G. Eidson 12641  
Ronald J. Eidson 3239

LSL JWSC W.O.: 18.11.1315

RWF 1-31-19

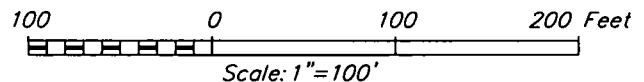
# WELL SITE PLAN



1) SEE "TOPOGRAPHICAL AND ACCESS ROAD MAP" FOR PROPOSED ROAD LOCATION.

**DIRECTIONS TO LOCATION:**

FROM THE INTERSECTION OF HWY. 285 AND CO. RD.  
720(DUARTE RD.) GO EAST ON CO. RD. 720 APPROX. 1.25  
MILES TO CO. RD. 748 GO SOUTH APPROX 0.7 MILES TURN  
LEFT AND GO SOUTHEAST APPROX. 5.4 MILES TO ACCESS ROAD  
SURVEY, FOLLOW STAKES NORTH 186 FEET TO THIS LOCATION.



**PROBITY SWD, LLC.**

**MAC-BRANT WEST SWD #1 WELL LOCATED 2360 FEET FROM  
THE NORTH LINE AND 1960 FEET FROM THE EAST LINE OF  
SECTION 28, TOWNSHIP 24 SOUTH, RANGE 29 EAST, N.M.P.M.,  
EDDY COUNTY, NEW MEXICO**

Survey Date: 12/11/18

CAD Date: 12/28/18

Drawn By: LSL

W.O. No.: 18111315

Rev: .

Rel. W.O.:

Sheet 1 of 1



**PROVIDING SURVEYING SERVICES  
SINCE 1946**

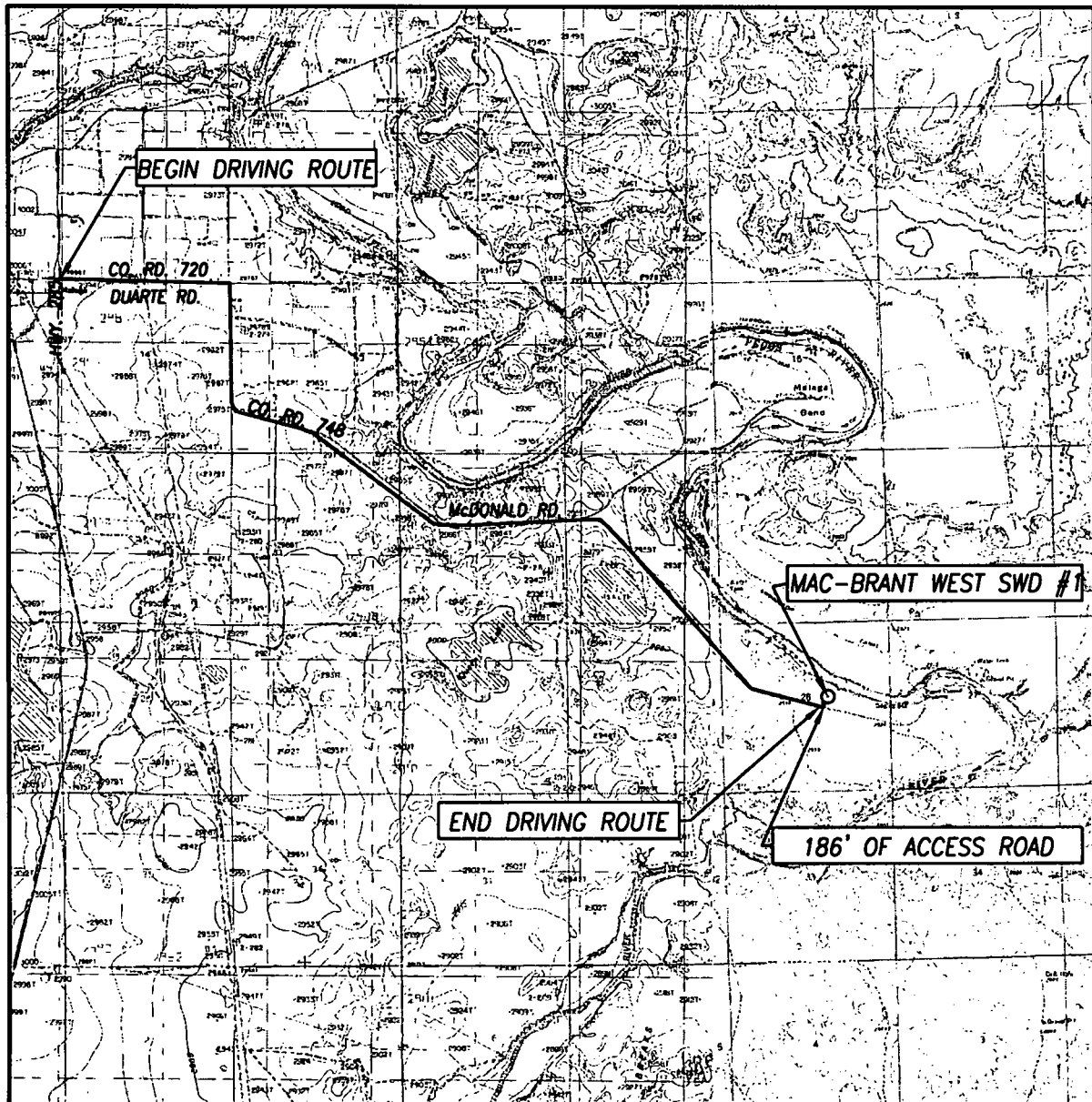
**JOHN WEST SURVEYING COMPANY**

412 N. DAL PASO HOBBS, N.M. 88240

(575) 393-3117 [www.jwsc.biz](http://www.jwsc.biz)

TBPLS# 10021000

# TOPOGRAPHIC AND ACCESS ROAD MAP



SCALE: 1" = 5280'

CONTOUR INTERVAL:  
PIERCE CANYON, N.M. - 10'

SEC. 28 TWP. 24-S RGE. 29-E

SURVEY \_\_\_\_\_ N.M.P.M.

COUNTY EDDY STATE NEW MEXICO

DESCRIPTION 2360' FNL & 1960' FEL

ELEVATION 2929'


OPERATOR PROBITY SWD, LLC.

LEASE MAC-BRANT WEST SWD

U.S.G.S. TOPOGRAPHIC MAP  
PIERCE CANYON, N.M.

## DIRECTIONS TO LOCATION:

FROM THE INTERSECTION OF HWY. 285 AND CO. RD. 720(DUARTE RD.) GO EAST ON CO. RD. 720 APPROX. 1.25 MILES TO CO. RD. 748 GO SOUTH APPROX 0.7 MILES TURN LEFT AND GO SOUTHEAST APPROX. 5.4 MILES TO ACCESS ROAD SURVEY FOLLOW STAKES NORTH 186 FEET TO THIS LOCATION.

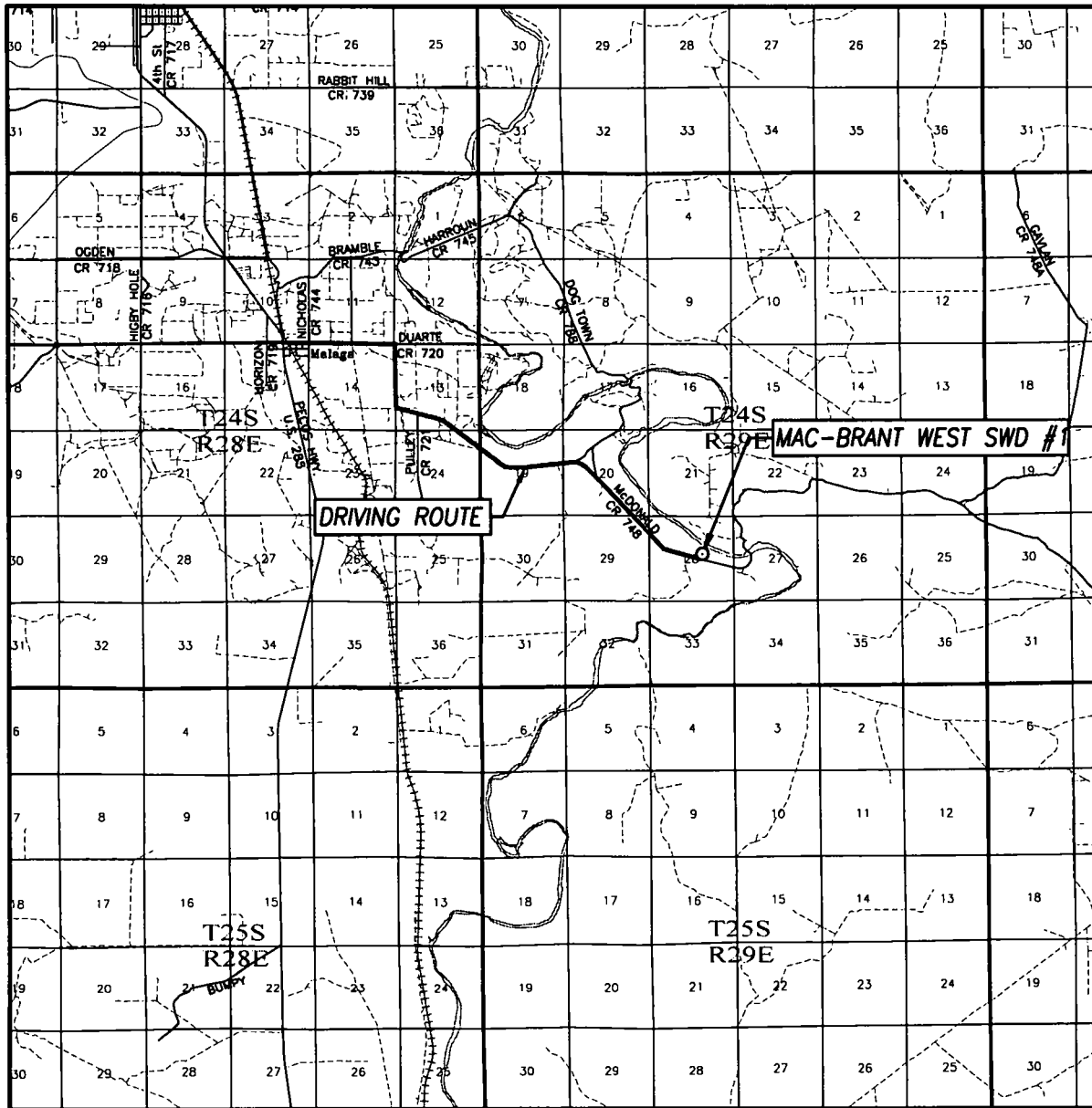


PROVIDING SURVEYING SERVICES  
SINCE 1946

**JOHN WEST SURVEYING COMPANY**

412 N. DAL PASO HOBBS, N.M. 88240  
(575) 393-3117 [www.jwsc.biz](http://www.jwsc.biz)  
TBPLS# 10021000

# VICINITY MAP



SCALE: 1" = 2 MILES

DRIVING ROUTE: SEE TOPOGRAPHICAL AND ACCESS ROAD MAP

SEC. 28 TWP. 24-S RGE. 29-E

SURVEY N.M.P.M.


COUNTY EDDY STATE NEW MEXICO

DESCRIPTION 2360' FNL & 1960' FWL

ELEVATION 2929'

OPERATOR PROBITY SWD, LLC.

LEASE MAC-BRANT WEST SWD



PROVIDING SURVEYING SERVICES  
SINCE 1946

**JOHN WEST SURVEYING COMPANY**

412 N. DAL PASO HOBBS, N.M. 88240  
(575) 393-3117 [www.jwsc.biz](http://www.jwsc.biz)  
TBPLS# 10021000

## DISTRICT I

1625 N. French Dr., Hobbs, NM 88240  
Phone: (575) 393-6161 Fax: (575) 393-0720

## DISTRICT II

811 S. First St., Artesia, NM 88210  
Phone: (575) 748-1283 Fax: (575) 748-9720

## DISTRICT III

1000 Rio Brazos Road, Aztec, NM 87410  
Phone: (505) 334-6178 Fax: (505) 334-6170

## DISTRICT IV

1220 S. St. Francis Dr., Santa Fe, NM 87505  
Phone: (505) 476-3460 Fax: (505) 476-3462

State of New Mexico  
Energy, Minerals & Natural Resources Department  
OIL CONSERVATION DIVISION  
1220 South St. Francis Dr.  
Santa Fe, New Mexico 87505

Form C-102

Revised August 1, 2011

Submit one copy to appropriate  
District Office

AMENDED REPORT

## WELL LOCATION AND ACREAGE DEDICATION PLAT

API Number	Pool Code	Pool Name
Property Code	Property Name <b>MAC-BRANT WEST SWD</b>	Well Number <b>1</b>
OGRID No.	Operator Name <b>PROBITY SWD, LLC.</b>	Elevation <b>2929'</b>

## Surface Location

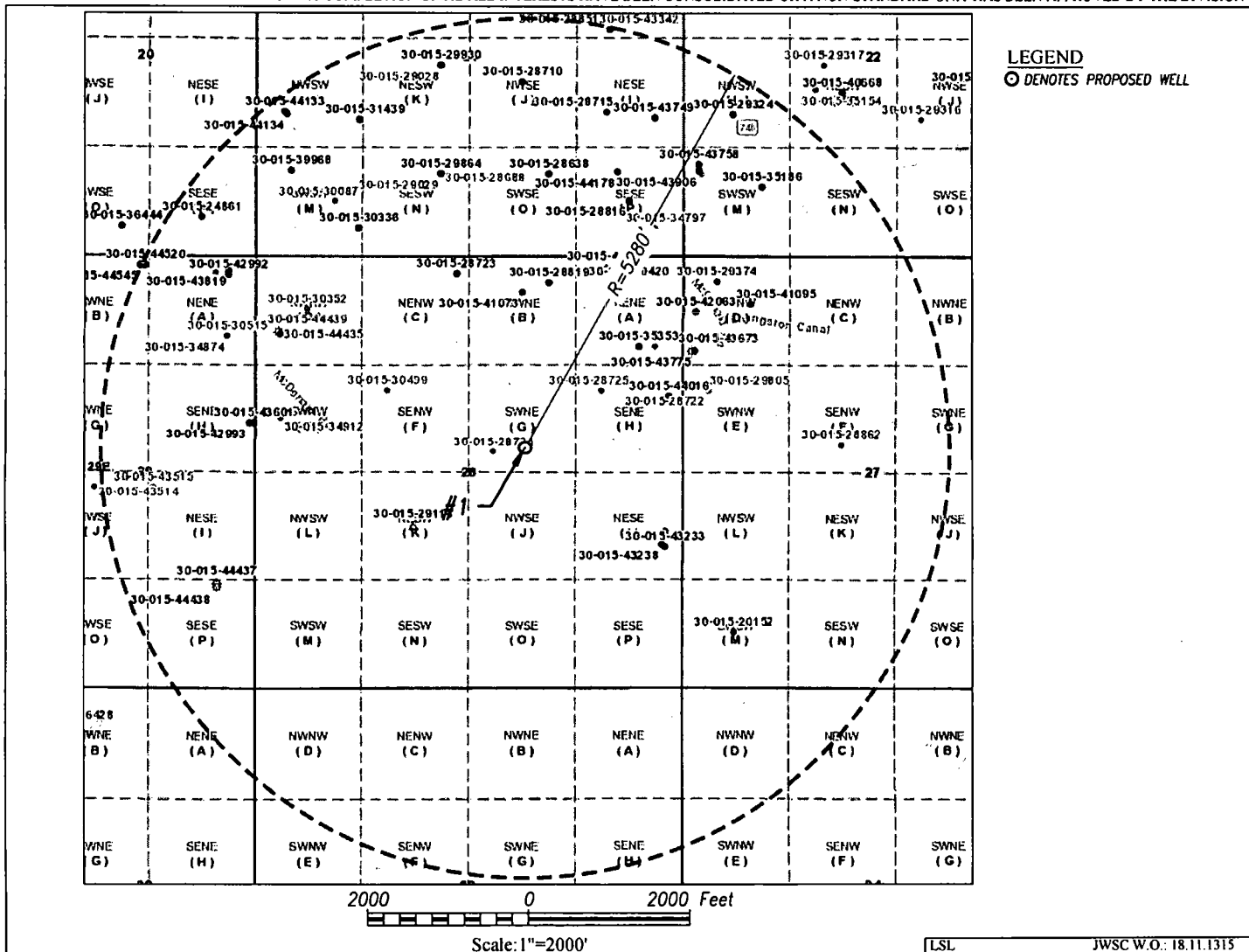
UL or lot No.	Section	Township	Range	Lot Idn	Feet from the	North/South line	Feet from the	East/West line	County
<b>G</b>	<b>28</b>	<b>24-S</b>	<b>29-E</b>		<b>2360</b>	<b>NORTH</b>	<b>1960</b>	<b>EAST</b>	<b>EDDY</b>

## Bottom Hole Location If Different From Surface

UL or lot No.	Section	Township	Range	Lot Idn	Feet from the	North/South line	Feet from the	East/West line	County

Dedicated Acres	Joint or Infill	Consolidation Code	Order No.

NO ALLOWABLE WILL BE ASSIGNED TO THIS COMPLETION UNTIL ALL INTERESTS HAVE BEEN CONSOLIDATED OR A NON-STANDARD UNIT HAS BEEN APPROVED BY THE DIVISION



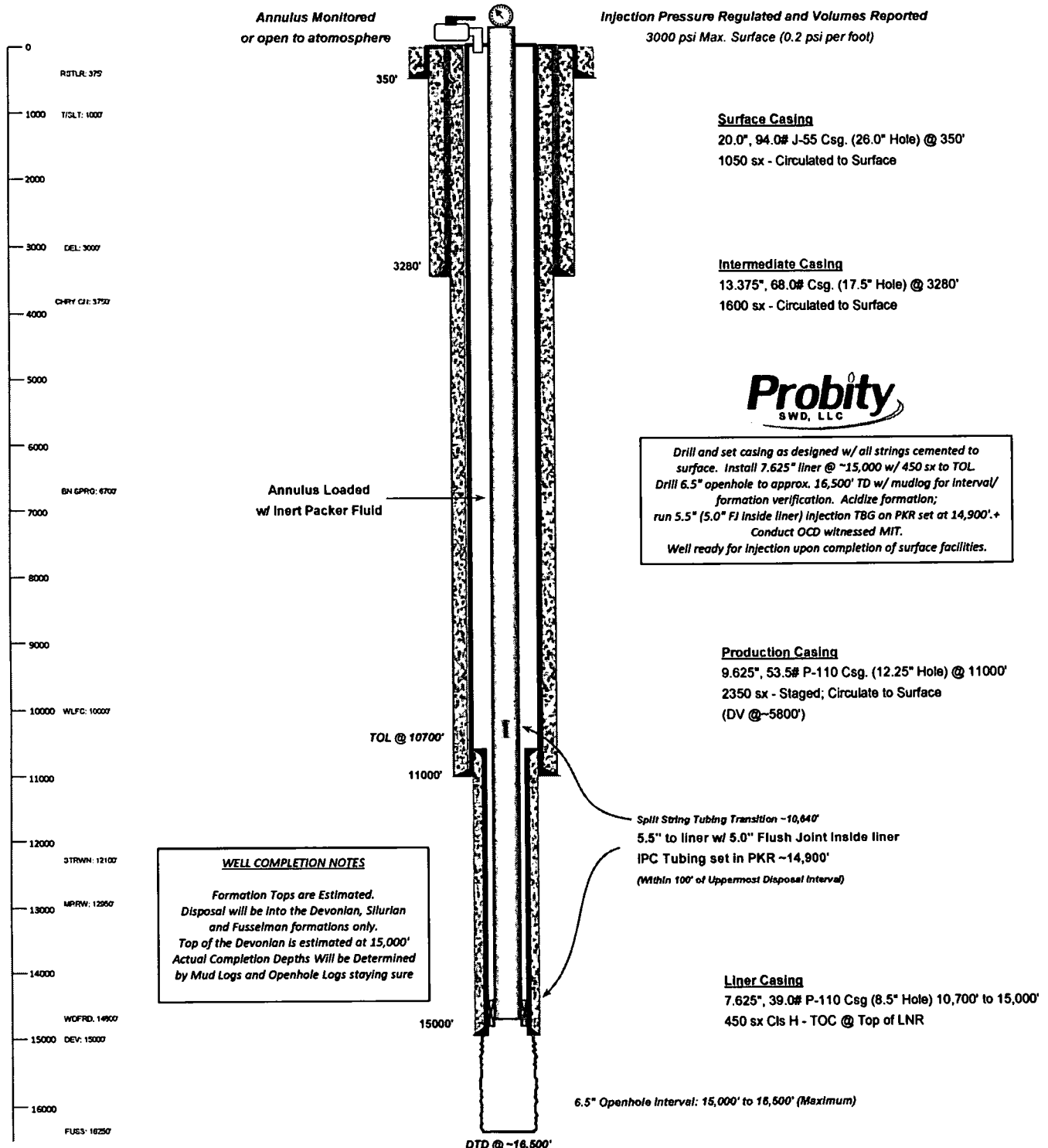


## WELL SCHEMATIC - PROPOSED Mac-Brant West SWD Well No.1

API 30-015-xxxxx  
2360' FNL & 1960' FEL, SEC. 28-T24S-R29E  
EDDY COUNTY, NEW MEXICO

Proposed: SWD; Devonian-Silurian-Fusselman

Spud Date: 3/01/2019  
SWD Config Dt: 4/15/2019



Drill and set casing as designed w/ all strings cemented to surface. Install 7.625" liner @ ~15,000 w/ 450 sx to TOL. Drill 6.5" openhole to approx. 16,500' TD w/ mudlog for interval/formation verification. Acidize formation; run 5.5" (5.0" FI inside liner) injection TBG on PKR set at 14,900'.+ Conduct OCD witnessed MIT. Well ready for injection upon completion of surface facilities.

Drawn by: Ben Stone, 11/29/2018



ELLBG: 18200