

**See COA at bottom of page!**

**District I**  
1625 N. French Dr., Hobbs, NM 88240  
Phone: (575) 393-6161 Fax: (575) 393-0720  
**District II**  
811 S. First St., Artesia, NM 88210  
Phone: (575) 748-1283 Fax: (575) 748-9720  
**District III**  
1000 Rio Brazos Road, Aztec, NM 87410  
Phone: (505) 334-6178 Fax: (505) 334-6170  
**District IV**  
1220 S. St. Francis Dr., Santa Fe, NM 87505  
Phone: (505) 476-3460 Fax: (505) 476-3462

State of New Mexico

Form C-101  
Revised July 18, 2013

**Energy Minerals and Natural Resources**

**NM OIL CONSERVATION  
Oil Conservation Division ARTESIA DISTRICT**

AMENDED REPORT

1220 South St. Francis Dr.

JAN 10 2019

Santa Fe, NM 87505

**RECEIVED**

**APPLICATION FOR PERMIT TO DRILL, RE-ENTER, DEEPEN, PLUGBACK, OR ADD A ZONE**

<b>1. Operator Name and Address</b> Probity SWD, LLC PO Box 7307 Midland, TX 79708		<b>2. OGRID Number</b> 296278
		<b>3. API Number</b> 30-015-45672
<b>4. Property Code</b> 324929 (TBD)	<b>5. Property Name</b> McDonald South SWD	
		<b>6. Well No.</b> 1

**7. Surface Location**

(To be verified by field survey)

UL - Lot	Section	Township	Range	Lot Idn	Feet from	N/S Line	Feet From	E/W Line	County
G	7	26S	29E		1750	FNL	1400	FEL	EDDY

**8. Proposed Bottom Hole Location**

(To be verified by field survey)

UL - Lot	Section	Township	Range	Lot Idn	Feet from	N/S Line	Feet From	E/W Line	County
G	7	26S	29E		1750	FNL	1400	FEL	EDDY

**9. Pool Information**

Pool Name	Pool Code
SWD; Devonian-Silurian	97869

**Additional Well Information**

<b>11. Work Type</b> N	<b>12. Well Type</b> SWD	<b>13. Cable/Rotary</b> R	<b>14. Lease Type</b> P	<b>15. Ground Level Elevation</b> 2909.2'
<b>16. Multiple</b> No	<b>17. Proposed Depth</b> 15,700'	<b>18. Formation</b> Devonian	<b>19. Contractor</b> TBD	<b>20. Spud Date</b> 3/15/2019
Depth to Ground water 51' avg		Distance from nearest fresh water well 3520'		Distance to nearest surface water 1830'

☒ We will be using a closed-loop system in lieu of lined pits

**21. Proposed Casing and Cement Program**

Type	Hole Size	Casing Size	Casing Weight/ft	Setting Depth	Sacks of Cement	Estimated TOC
Surface	26.5"	20.0"	94.0 lb/ft	550'	1600	SURFACE
Intermdt	17.5"	13.375"	68.0 lb/ft	3200'	1600	SURFACE
Production	12.25"	9.625"	53.5 lb/ft	11,100'	2100	SURFACE
Liner	8.5"	7.625"	39.0 lb/ft	10,800'-15,100'	200	TOL
OH	6.5"			15,100' - 15,700'		

**Casing/Cement Program: Additional Comments**

**22. Proposed Blowout Prevention Program**

Type	Working Pressure	Test Pressure	Manufacturer
Double Hydraulic/Blinds, Pipe	10000	10000	Hydril, Cameron or Equivalent

<b>23. I hereby certify that the information given above is true and complete to the best of my knowledge and belief. I further certify that I have complied with 19.15.14.9 (A) NMAC <input type="checkbox"/> and/or 19.15.14.9 (B) NMAC <input type="checkbox"/> , if applicable.</b>		<b>OIL CONSERVATION DIVISION</b>	
Signature: <i>Ben Stone</i>		Approved By: <i>Raymond W. Duda</i>	
Printed name: Ben Stone		Title: <i>Geologist</i>	
Title: Agent for Probity SWD, LLC		Approved Date: 1-31-19	
E-mail Address: ben@sosconsulting.us		Expiration Date: 1-31-21	
Date: 1/10/2019	Phone: 903-488-9850	Conditions of Approval Attached <i>Approved C-108</i>	

*required before spudding well.*

DISTRICT I  
1625 N. French Dr., Hobbs, NM 88240  
Phone: (575) 393-6161 Fax: (575) 393-0720

DISTRICT II  
811 S. First St., Artesia, NM 88210  
Phone: (575) 748-1283 Fax: (575) 748-9720

DISTRICT III  
1000 Rio Brazos Road, Aztec, NM 87410  
Phone: (505) 334-6178 Fax: (505) 334-6170

DISTRICT IV  
1220 S. St. Francis Dr., Santa Fe, NM 87505  
Phone: (505) 476-3460 Fax: (505) 476-3462

State of New Mexico **NM OIL CONSERVATION**  
Energy, Minerals & Natural Resources Department  
ARTESIA DISTRICT  
OIL CONSERVATION DIVISION  
1220 South St. Francis Dr.  
Santa Fe, New Mexico 87505

Form C-102

Revised August 1, 2011

Submit one copy to appropriate  
District Office

JAN 10 2019

□ AMENDED REPORT

RECEIVED

WELL LOCATION AND ACREAGE DEDICATION PLAT

API Number 30-015- <b>45672</b>	Pool Code 97869	Pool Name SWD; Devonian-Silurian
Property Code <b>324929</b>	Property Name <b>McDONALD SOUTH SWD</b>	Well Number <b>1</b>
OGRID No. 296278	Operator Name <b>PROBITY SWD, LLC.</b>	Elevation <b>2909'</b>

Surface Location

UL or lot No. <b>G</b>	Section <b>7</b>	Township <b>26-S</b>	Range <b>29-E</b>	Lot Idn	Feet from the <b>1750</b>	North/South line <b>NORTH</b>	Feet from the <b>1400</b>	East/West line <b>EAST</b>	County <b>EDDY</b>
---------------------------	---------------------	-------------------------	----------------------	---------	------------------------------	----------------------------------	------------------------------	-------------------------------	-----------------------

Bottom Hole Location If Different From Surface

UL or lot No.	Section	Township	Range	Lot Idn	Feet from the	North/South line	Feet from the	East/West line	County
Dedicated Acres	Joint or Infill	Consolidation Code	Order No.						

NO ALLOWABLE WILL BE ASSIGNED TO THIS COMPLETION UNTIL ALL INTERESTS HAVE BEEN CONSOLIDATED OR A NON-STANDARD UNIT HAS BEEN APPROVED BY THE DIVISION

1									
2									
3									
4									

GEODETIC COORDINATES  
NAD 27 NME  
SURFACE LOCATION  
Y= 385493.2 N  
X= 597355.6 E  
LAT.= 32.059446° N  
LONG.= 104.019075° W

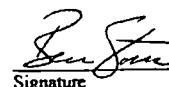
GEODETIC COORDINATES  
NAD 83 NME  
SURFACE LOCATION  
Y= 385550.8 N  
X= 638540.8 E  
LAT.= 32.059571° N  
LONG.= 104.019560° W

1750'

1400'

OPERATOR CERTIFICATION

I hereby certify that the information herein is true and complete to the best of my knowledge and belief, and that this organization either owns a working interest or unleased mineral interest in the land including the proposed bottom hole location or has a right to drill this well at this location pursuant to a contract with an owner of such mineral or working interest, or to a voluntary pooling agreement or a compulsory pooling order heretofore entered by the division.

  
Signature

1/10/2019  
Date

Ben Stone  
Printed Name

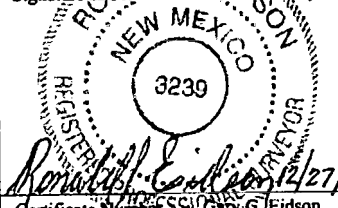
ben@sosconsulting.us  
E-mail Address

SURVEYOR CERTIFICATION

I hereby certify that the well location shown on this plat was plotted from field notes of actual surveys made by me or under my supervision, and that the same is true and correct to the best of my belief.

DECEMBER 11, 2018

Date of Survey  
Signature & Seal of Professional Surveyor:

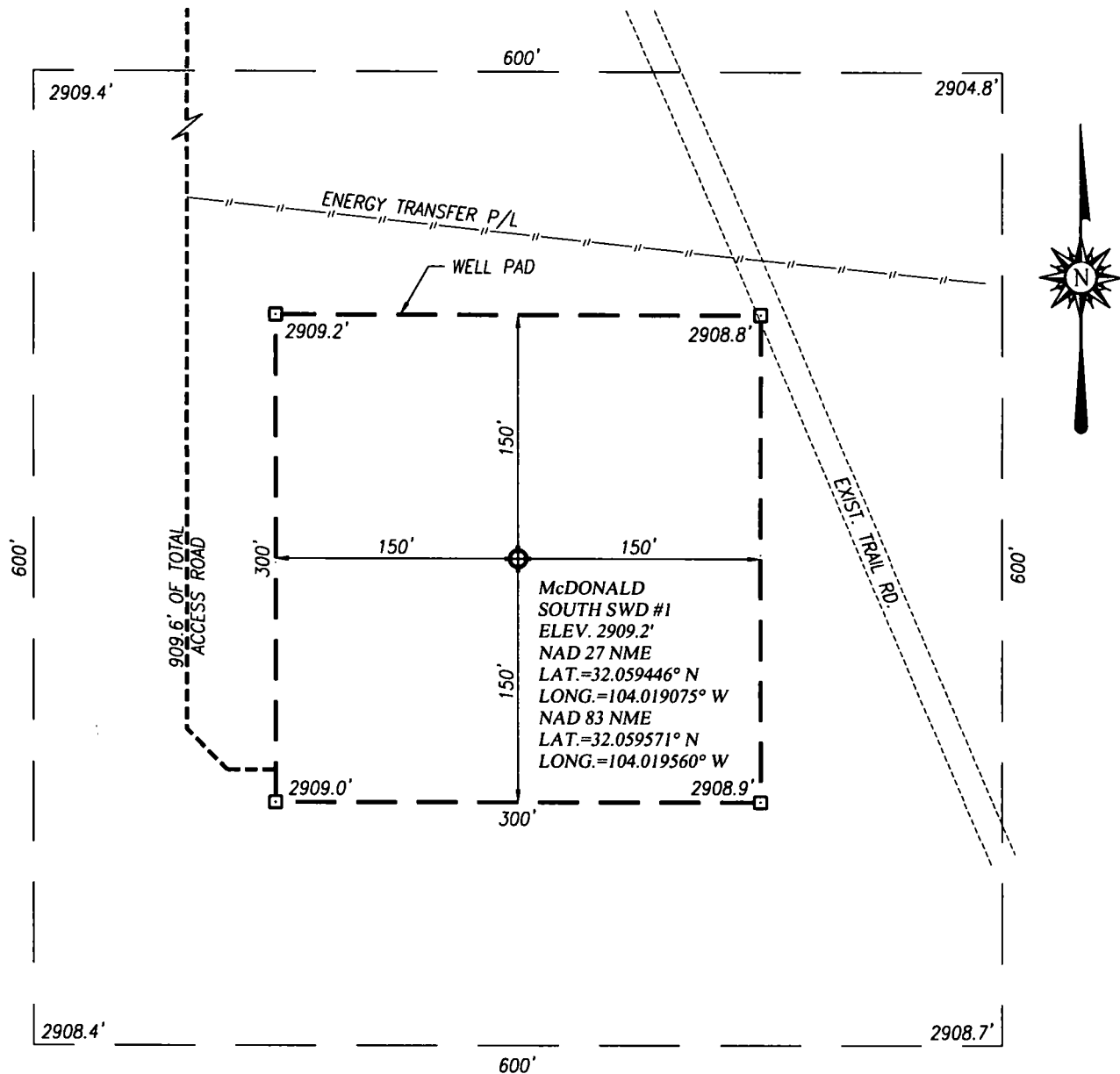
  
Certificate Number 3239  
Ronald J. Eidson

LSL

IWSC W.O.: 18.11.1317

Rev P-31-19

# WELL SITE PLAN

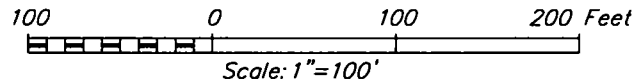


## NOTE:

1) SEE "TOPOGRAPHICAL AND ACCESS ROAD MAP" FOR PROPOSED ROAD LOCATION.

## DIRECTIONS TO LOCATION:

FROM THE INTERSECTION OF HWY. 285 AND CO. RD. 725 (LONGHORN RD.) GO NORTHEAST ON LONGHORN RD APPROX 2.7 MILES TO ACCESS ROAD STAKES FOLLOW ROAD STAKED 134 FEET SOUTHEAST THEN TURN RIGHT AND GO SOUTH 710 FEET THEN SOUTHEAST 35 FEET THEN EAST 30 FEET TO THIS LOCATION.



## PROBITY SWD, LLC.

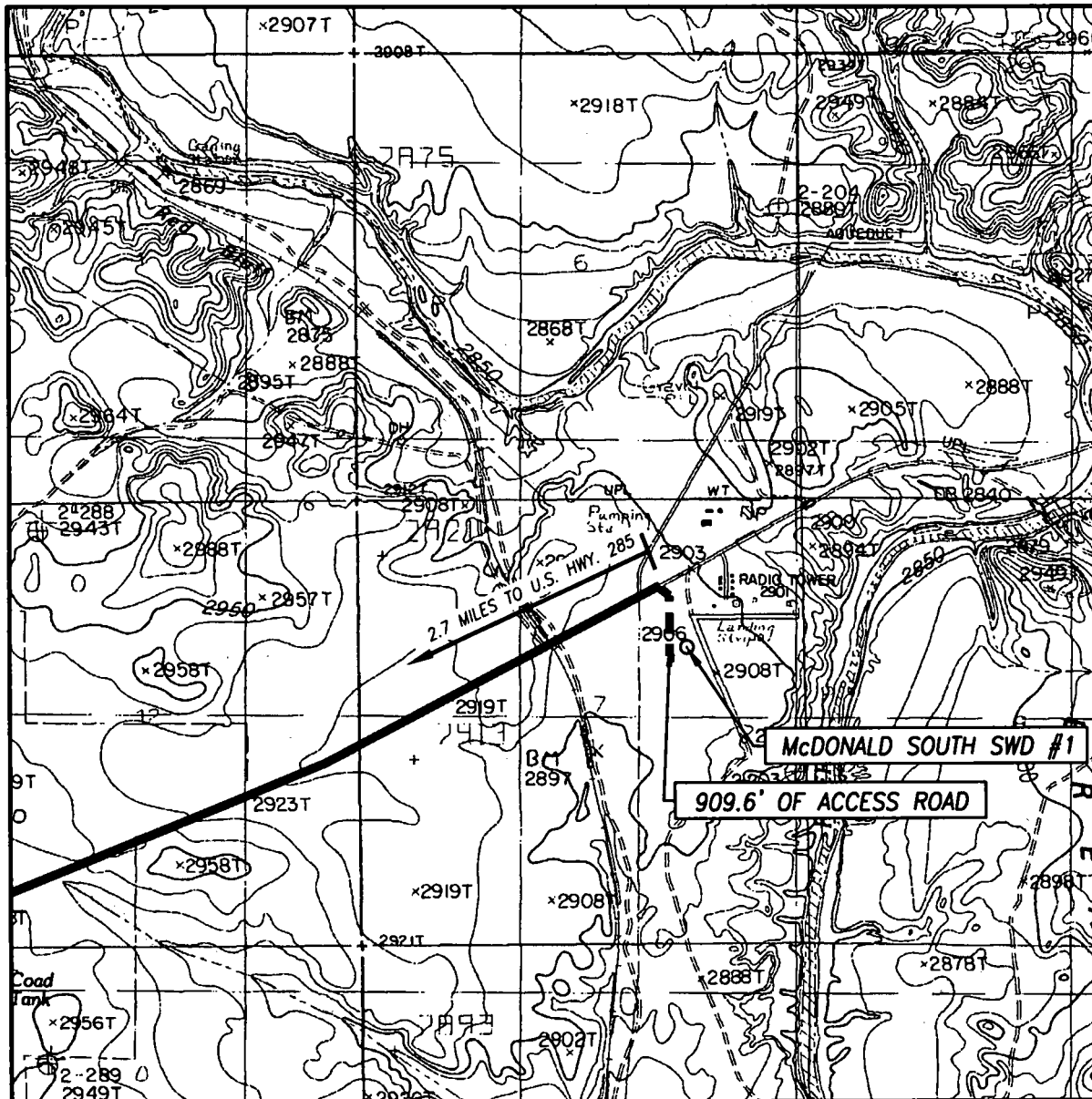
McDONALD SOUTH SWD #1 WELL LOCATED 1750 FEET FROM THE NORTH LINE AND 1400 FEET FROM THE EAST LINE OF SECTION 7, TOWNSHIP 26 SOUTH, RANGE 29 EAST, N.M.P.M., EDDY COUNTY, NEW MEXICO



PROVIDING SURVEYING SERVICES  
SINCE 1946  
**JOHN WEST SURVEYING COMPANY**  
412 N. DAL PASO HOBBS, N.M. 88240  
(575) 393-3117 www.jwsc.biz  
TBPLS# 10021000

Survey Date: 12/11/18	CAD Date: 12/21/18	Drawn By: LSL
W.O. No.: 18111317	Rev: .	Rel. W.O.: Sheet 1 of 1

# TOPOGRAPHIC AND ACCESS ROAD MAP



SCALE: 1" = 2000'

CONTOUR INTERVAL:  
RED BLUFF, N.M. - 10'

SEC. 7 TWP. 26-S RGE. 29-E

SURVEY N.M.P.M.

COUNTY EDDY STATE NEW MEXICO

DESCRIPTION 1750' FNL & 1400' FEL

ELEVATION 2909'

OPERATOR PROBITY SWD, LLC.

LEASE MCDONALD SOUTH SWD

U.S.G.S. TOPOGRAPHIC MAP  
RED BLUFF, N.M.

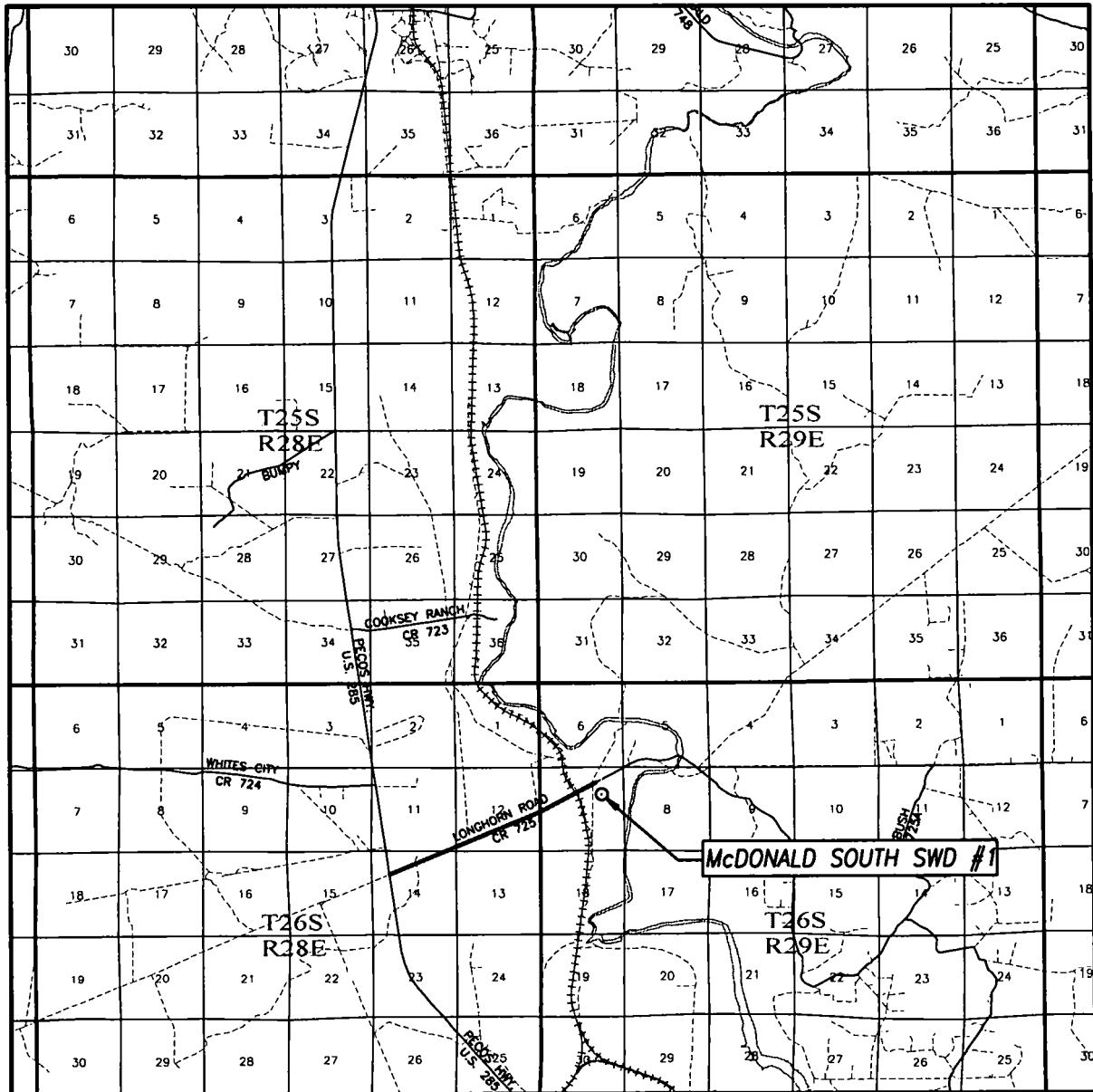
## DIRECTIONS TO LOCATION:

FROM THE INTERSECTION OF HWY. 285 AND CO. RD. 725 (LONGHORN RD.) GO NORTHEAST ON LONGHORN RD APPROX 2.7 MILES TO ACCESS ROAD STAKES FOLLOW ROAD STAKED 134 FEET SOUTHEAST THEN TURN RIGHT AND GO SOUTH 710 FEET THEN SOUTHEAST 35 FEET THEM EAST 30 FEET TO THIS LOCATION.

PROVIDING SURVEYING SERVICES  
SINCE 1946

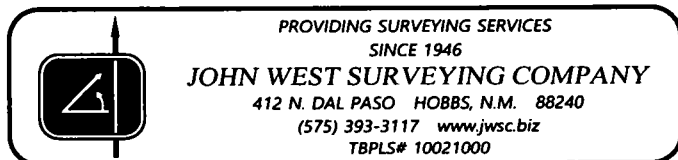
**JOHN WEST SURVEYING COMPANY**

412 N. DAL PASO HOBBS, N.M. 88240  
(575) 393-3117 [www.jwsc.biz](http://www.jwsc.biz)  
TBPLS# 10021000



DRIVING ROUTE: SEE TOPOGRAPHICAL AND ACCESS ROAD MAP

LEASE McDONALD SOUTH SWD



**DISTRICT I**  
1625 N. French Dr., Hobbs, NM 88240  
Phone: (575) 393-6161 Fax: (575) 393-0720

**DISTRICT II**  
811 S. First St., Artesia, NM 88210  
Phone: (575) 748-1283 Fax: (575) 748-9720

**DISTRICT III**  
1000 Rio Brazos Road, Aztec, NM 87410  
Phone: (505) 334-6178 Fax: (505) 334-6170

**DISTRICT IV**  
1220 S. St. Francis Dr., Santa Fe, NM 87505  
Phone: (505) 476-3460 Fax: (505) 476-3462

State of New Mexico  
Energy, Minerals & Natural Resources Department  
**OIL CONSERVATION DIVISION**  
1220 South St. Francis Dr.  
Santa Fe, New Mexico 87505

Form C-102  
Revised August 1, 2011  
Submit one copy to appropriate  
District Office

AMENDED REPORT

**WELL LOCATION AND ACREAGE DEDICATION PLAT**

API Number	Pool Code	Pool Name
Property Code	Property Name <b>McDONALD SOUTH SWD</b>	
OGRID No.	Operator Name <b>PROBITY SWD, LLC.</b>	Well Number <b>1</b> Elevation <b>3909'</b>

Surface Location

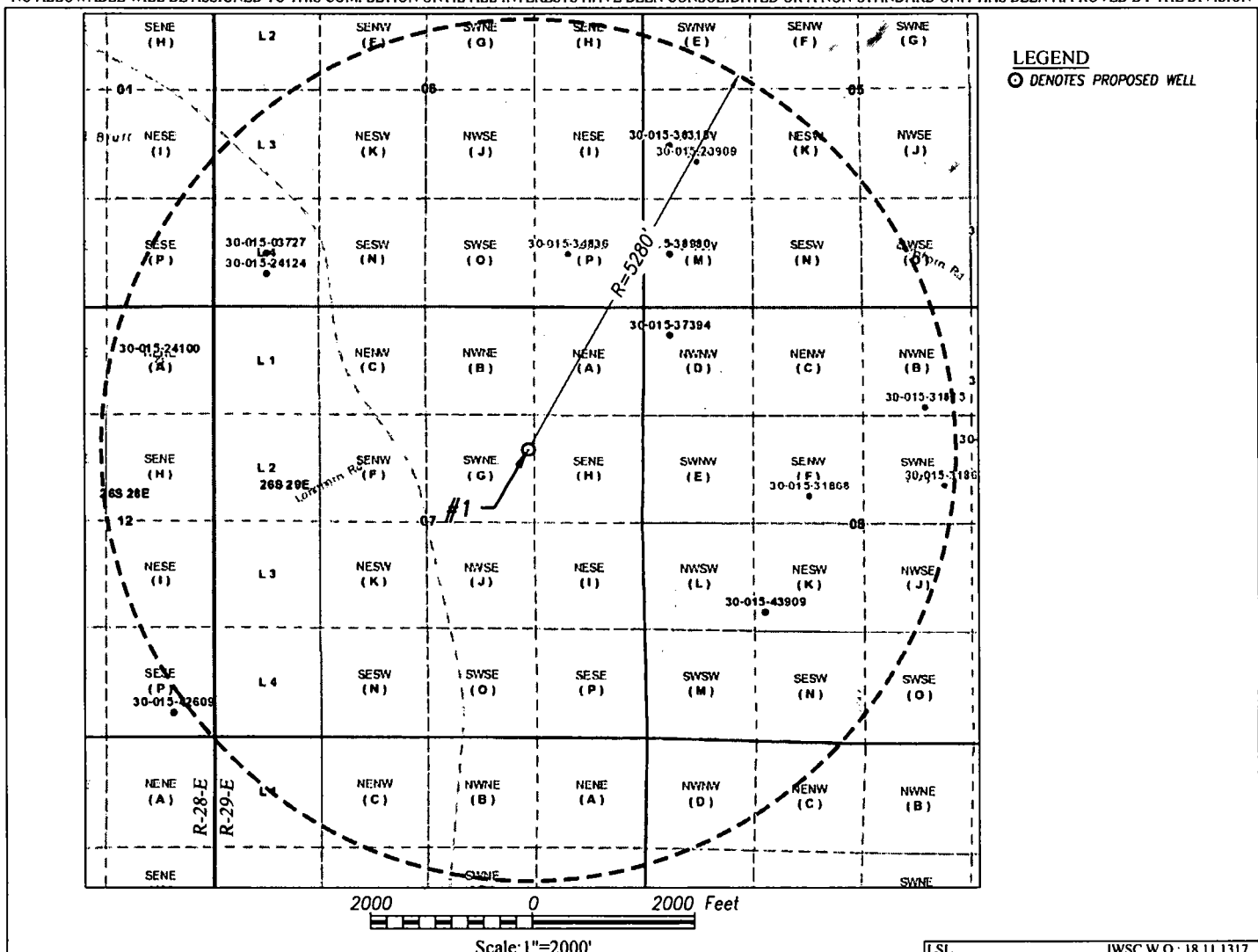
UL or lot No.	Section	Township	Range	Lot Idn	Feet from the	North/South line	Feet from the	East/West line	County
G	7	26-S	29-E		1750	NORTH	1400	EAST	EDDY

Bottom Hole Location If Different From Surface

UL or lot No.	Section	Township	Range	Lot Idn	Feet from the	North/South line	Feet from the	East/West line	County

Dedicated Acres	Joint or infill	Consolidation Code	Order No.

NO ALLOWABLE WILL BE ASSIGNED TO THIS COMPLETION UNTIL ALL INTERESTS HAVE BEEN CONSOLIDATED OR A NON-STANDARD UNIT HAS BEEN APPROVED BY THE DIVISION



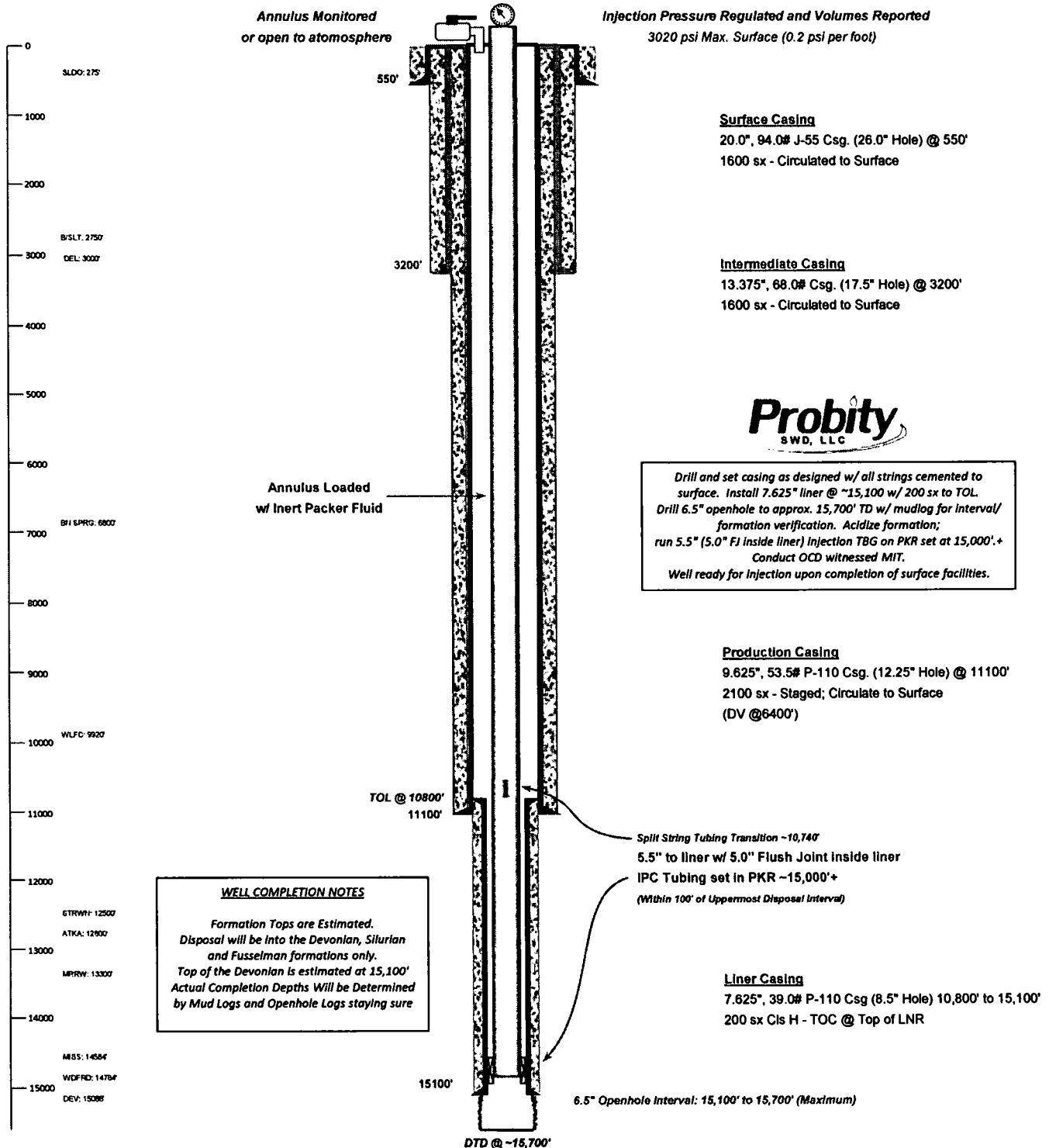


# WELL SCHEMATIC - PROPOSED McDonald South SWD Well No.1

API 30-015-xxxxx  
1750' FNL & 1400' FEL, SEC. 7-T26S-R29E  
EDDY COUNTY, NEW MEXICO

Proposed: SWD; Devonian-Silurian-Fusselman

Spud Date: 4/01/2019  
SWD Config Dt: 5/15/2019



Drawn by: Ben Stone, 12/18/2018

