

District I
1625 N. French Dr., Hobbs, NM 88240
Phone: (575) 393-6161 Fax: (575) 393-0720
District II
811 S. First St., Artesia, NM 88210
Phone: (575) 748-1283 Fax: (575) 748-9720
District III
1000 Rio Huerfano Road, Aztec, NM 87410
Phone: (505) 334-6178 Fax: (505) 334-6170
District IV
1220 S. St. Francis Dr., Santa Fe, NM 87505
Phone: (505) 476-3460 Fax: (505) 476-3462

State of New Mexico
Energy, Minerals & Natural Resources Department
OIL CONSERVATION DIVISION
1220 South St. Francis Dr.
Santa Fe, NM 87505

Form C-102
Revised August 1, 2011
Submit one copy to appropriate
District Office

☒ AMENDED REPORT

WELL LOCATION AND ACREAGE DEDICATION PLAT

1 API Number 30-015-45331		2 Pool Code 98220		3 Pool Name PURPLE SAGE WOLF CAMP	
4 Property Code 324944		5 Property Name FULLER 13/24 W1KN FED COM			6 Well Number 2H
7 GRID NO. 14744		8 Operator Name MEWBOURNE OIL COMPANY			9 Elevation 3003'
10 Surface Location					
UL or lot no. G	Section 13	Township 26S	Range 29E	Lot Idn 2500	Feet from the NORTH
				Feet From the 2485	East/West line EAST
				County EDDY	
11 Bottom Hole Location If Different From Surface					
UL or lot no. N	Section 24	Township 26S	Range 29E	Lot Idn 330	Feet from the SOUTH
				Feet from the 2200	East/West line WEST
				County EDDY	
12 Dedicated Acres 480		13 Joint or Infill		14 Consolidation Code	
				15 Order No.	

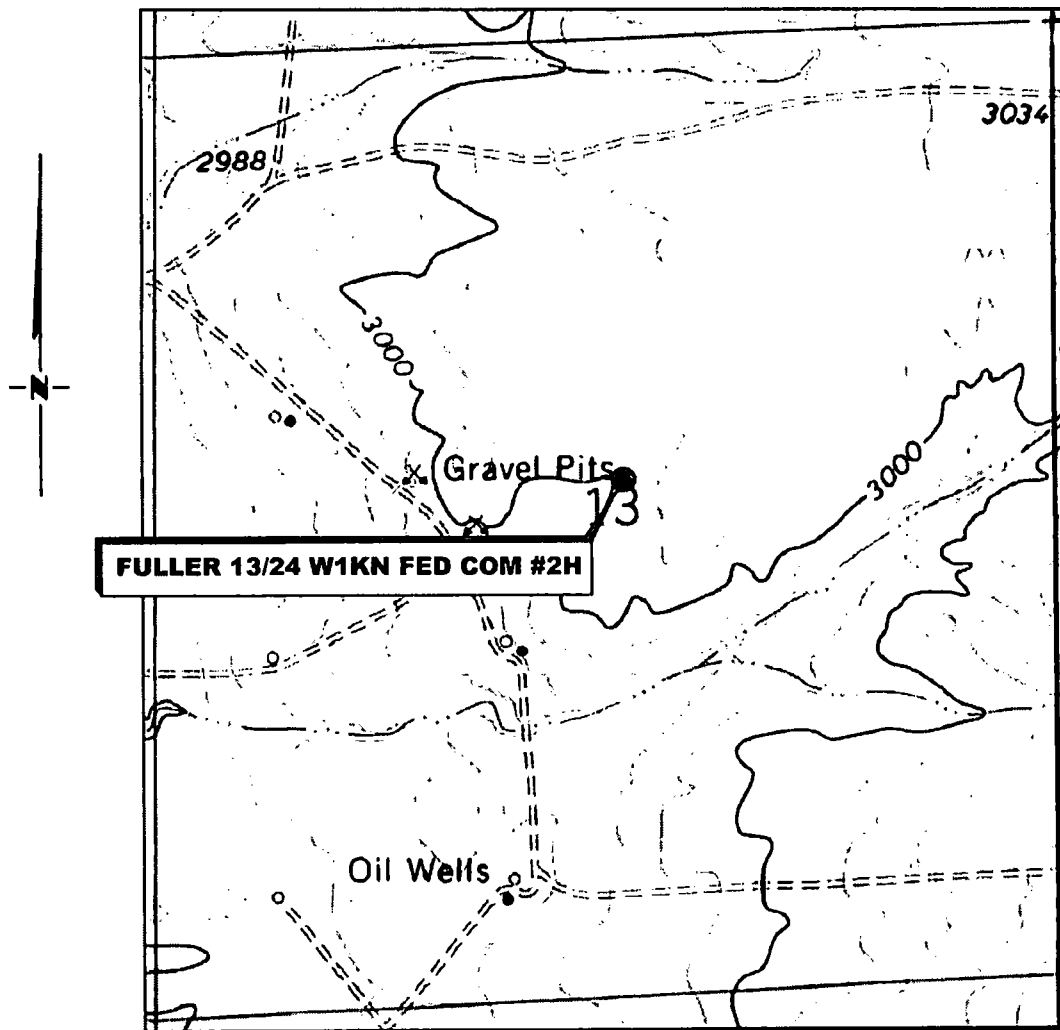
No allowable will be assigned to this completion until all interest have been consolidated or a non-standard unit has been approved by the division.

<p>GEODETIC DATA NAD 83 GRID - NM EAST SURFACE LOCATION N: 379479.7 - E: 664065.1 LAT: 32.026509° N LONG: 103.937240° W</p> <p>GEODETIC DATA NAD 83 GRID - NM EAST BOTTOM HOLE N: 371592.6 - E: 663684.1 LAT: 32.020973° N LONG: 103.938563° W</p>	<p>CORNER DATA NAD 83 GRID - NM EAST</p> <p>A: FOUND BRASS CAP "1940" N: 371124.3 - E: 661488.2</p> <p>B: FOUND BRASS CAP "1940" N: 373802.7 - E: 661493.7</p> <p>C: FOUND BRASS CAP "1940" N: 376497.1 - E: 661496.5</p> <p>D: FOUND BRASS CAP "1940" N: 379187.8 - E: 661491.3</p> <p>E: FOUND BRASS CAP "1940" N: 381882.4 - E: 661489.4</p> <p>F: FOUND BRASS CAP "1940" N: 381978.1 - E: 664013.6</p> <p>G: FOUND BRASS CAP "1940" N: 382074.4 - E: 666537.7</p> <p>H: FOUND BRASS CAP "1940" N: 379419.0 - E: 666548.9</p> <p>I: FOUND BRASS CAP "1940" N: 376761.3 - E: 666580.2</p> <p>J: FOUND BRASS CAP "1940" N: 374102.9 - E: 666571.7</p> <p>K: FOUND 5/8" REBAR N: 371444.9 - E: 666582.5</p> <p>L: FOUND BRASS CAP "1940" N: 371284.8 - E: 664035.5</p> <p>M: FOUND BRASS CAP "1940" N: 376630.2 - E: 664029.0</p>	<p>17 OPERATOR CERTIFICATION I hereby certify that the information contained herein is true and complete to the best of my knowledge and belief, and that this organization either owns a working interest or unleased mineral interest in the land including the proposed bottom hole location or has a right to drill this well at this location pursuant to a contract with an owner of such a mineral or working interest, or to a voluntary pooling agreement or a compulsory pooling order heretofore entered by the division.</p> <p>Signature: <u>Bradley Bishop</u> Date: <u>2-8-19</u> Printed Name: <u>BRADLEY BISHOP</u> E-mail Address: <u>Bbishop@mebourne.com</u></p>
	<p>18 SURVEYOR CERTIFICATION I hereby certify that the well location shown on this plat was plotted from field notes of actual surveys made by me or under my supervision, and that the same is true and correct to the best of my belief.</p> <p>10-11-2018 Date of Survey</p> <p>Signature and Seal of Professional Surveyor: <u>Robert M. Howett</u> 19680 Certificate Number</p>	

RRC-Job No: LS18101135

Ruf 2-5-19
2-8-19

LOCATION VERIFICATION MAP



**SECTION 13, TWP. 26 SOUTH, RGE. 29 EAST,
N. M. P. M., EDDY CO., NEW MEXICO**

OPERATOR: <u>Mewbourne Oil Company</u>	LOCATION: <u>2500' FNL & 2485' FEL</u>
LEASE: <u>Fuller 13/24 W1KN Fed Com</u>	CONTOUR INTERVAL: <u>10'</u>
WELL NO.: <u>2H</u>	USGS TOPO. SOURCE MAP:
ELEVATION: <u>3003'</u>	<u>Ross Ranch, NM (1968)</u>

Copyright 2016 - All Rights Reserved

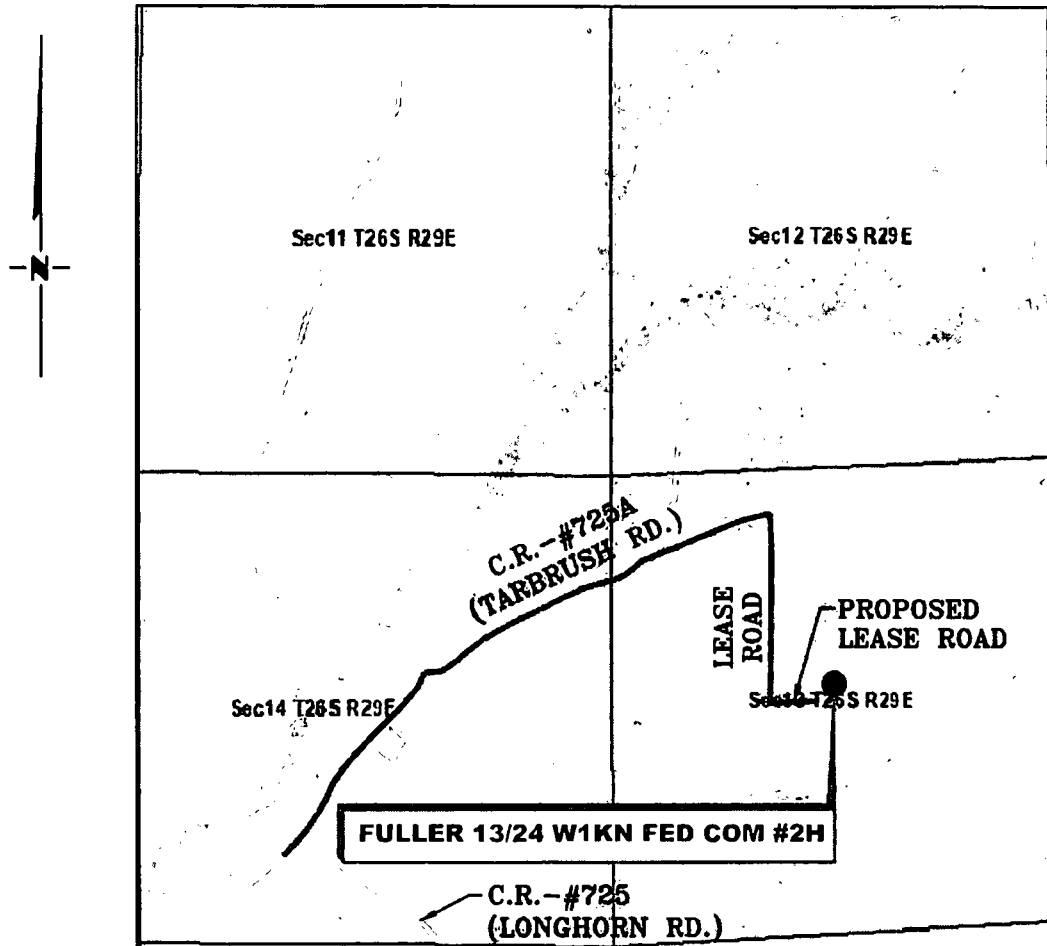
NO.	REVISION	DATE
JOB NO.: LS18101135		
DWG. NO.: 18101135-2		

RRC

308 W. BROADWAY ST., HOBBS, NM 88240 (575) 964-8200

SCALE: 1" = 1000'
DATE: 10-11-2018
SURVEYED BY: ML/TF
DRAWN BY: KAKN
APPROVED BY: RMH
SHEET: 1 OF 1

VICINITY MAP



SECTION 13, TWP. 26 SOUTH, RGE. 29 EAST,
N. M. P. M., EDDY CO., NEW MEXICO

OPERATOR: Mewbourne Oil Company LOCATION: 2500' FNL & 2485' FEL
LEASE: Fuller 13/24 W1KN Fed Com ELEVATION: 3003'
WELL NO.: 2H

Copyright 2016 - All Rights Reserved

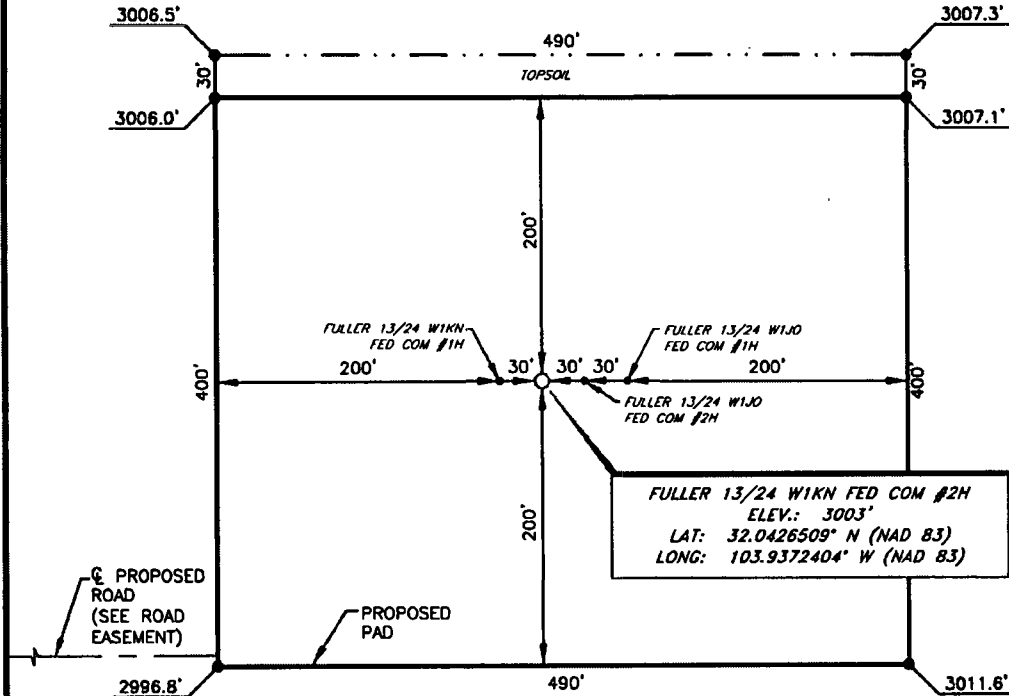
NO.	REVISION	DATE
JOB NO.: LS18101135		
DWG. NO.: 18101135-3		

RRC

308 W. BROADWAY ST., HOBBS, NM 88240 (575) 964-8200

SCALE: N. T. S.
DATE: 10-11-2018
SURVEYED BY: ML/TF
DRAWN BY: KAKN
APPROVED BY: RMH
SHEET: 1 OF 1

MEWBOURNE OIL COMPANY
FULLER 13/24 W1KN FED COM #2H
(2500' FNL & 2485' FEL)
SECTION 13, T28S, R29E
N. M. P. M., EDDY COUNTY, NEW MEXICO



FULLER 13/24 W1KN FED COM #2H
ELEV.: 3003'
LAT: 32.0426509° N (NAD 83)
LONG: 103.9372404° W (NAD 83)

DIRECTIONS TO LOCATION

From the intersection of C.R.-725 (Longhorn Rd.) and C.R.-725A (Tarbrush Rd.):
Go Northeast on C.R.-725A approx. 0.5 miles to a "Y";
Turn right and continue Northeast approx. 0.9 miles to a lease road on the right;
Turn right and go South approx. 0.4 miles to a proposed road on the left;
Turn left and go East approx. 0.1 miles to proposed location.

I, R. M. Howett, a N. M. Professional Surveyor, hereby certify that I prepared this unclassified survey of a well location from an actual survey made on the ground under my direct supervision, said survey and plat meet the Min. Stds. for Land Surveying in the State of N. M. and are true and correct to the best of my knowledge and belief.

Robert M. Howett

Robert M. Howett NM PS 19680



SCALE: 1" = 100'
0 50' 100'

BEARINGS ARE GRID NAD 83
NM EAST
DISTANCES ARE HORIZ. GROUND.

Copyright 2016 - All Rights Reserved

NO.	REVISION	DATE
1		
JOB NO.: LS18101135		
DWG. NO.: 18101135-4		

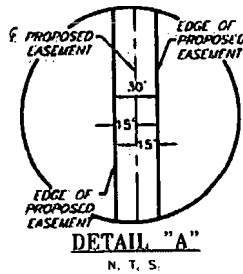
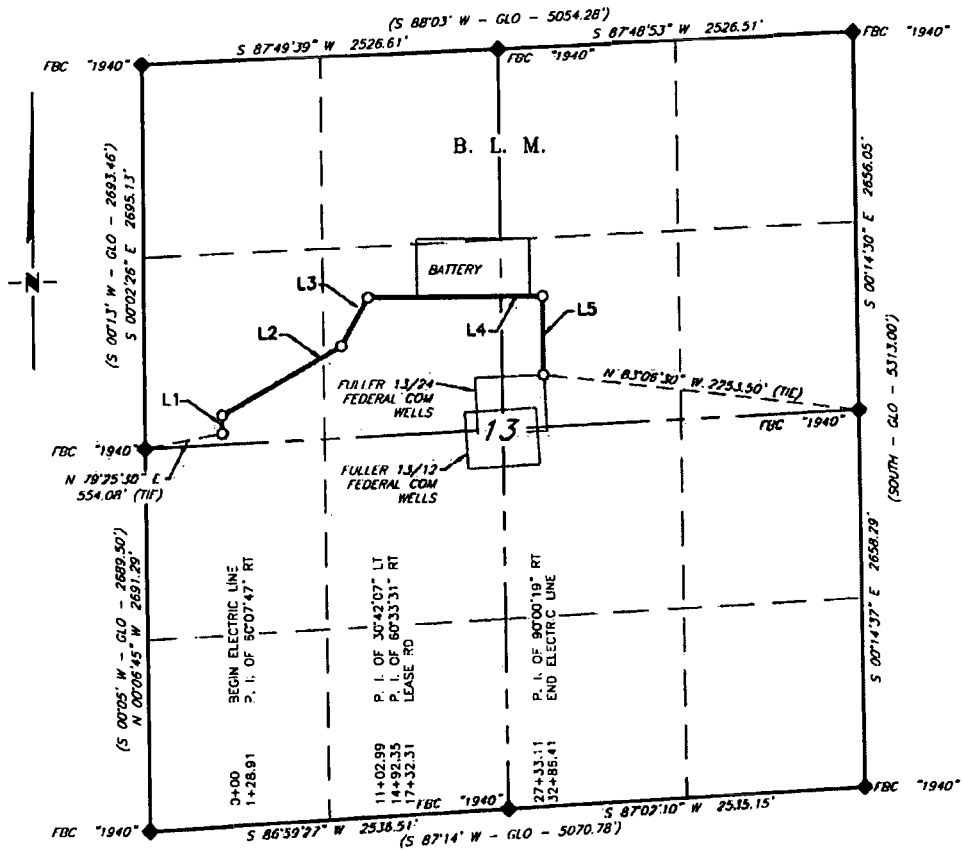
RRC

308 W. BROADWAY ST., HOBBS, NM 88240 (575) 964-8200

SCALE: 1" = 1000'
DATE: 10-11-2018
SURVEYED BY: ML/TF
DRAWN BY: KAKN
APPROVED BY: RMH
SHEET: 1 OF 1

SCALE: 1" = 1000'
DATE: 11-13-2018
SURVEYED BY: JF/SV
DRAWN BY: KAKN
APPROVED BY: RMH
SHEET: 1 OF 1

MEWBOURNE OIL COMPANY
PROPOSED ELECTRIC LINE FOR THE FULLER FEDERAL COM WELLS
 SECTION 13, T26S, R29E,
 N. M. P. M., EDDY CO., NEW MEXICO



LINE TABLE		
LINE	BEARING	LENGTH
L1	N 00°00'24" E	128.91'
L2	N 60°08'11" E	974.08'
L3	N 29°26'04" E	389.36'
L4	N 89°59'35" E	1,240.76'
L5	S 00°00'06" E	553.30'

SCALE: 1" = 1000'
 0 500' 1000'

BEARINGS ARE GRID MAG 83
 NM EAST
 DISTANCES ARE HORIZ. GROUND.

LEGEND
 () RECORD DATA - GLO
 FOUND MONUMENT
 AS NOTED

I, R. M. Howett, a N. M. Professional Surveyor, hereby certify that I prepared this plat from an actual survey made on the ground under my direct supervision, said survey and plat meet the Min. Stds. for Land Surveying in the State of N. M. and are true and correct to the best of my knowledge and belief.

Robert M. Howett

PROPOSED ELECTRIC LINE Robert M. Howett NM PS 19680



Copyright 2016 - All Rights Reserved

NO.	REVISION	DATE
1		
JOB NO.:	LS18111256	
DWG. NO.:	18111256-2	

RRC

701 S. CECIL ST., HOBBS, NM 88240 (575) 964-8200

SCALE: 1" = 1000'
DATE: 11-13-2018
SURVEYED BY: JF/SV
DRAWN BY: KAKN
APPROVED BY: RMH
SHEET: 1 OF 2

MEWBOURNE OIL COMPANY
PROPOSED ELECTRIC LINE FOR THE FULLER FEDERAL COM WELLS
SECTION 13, T28S, R29E,
N. M. P. M., EDDY CO., NEW MEXICO

DESCRIPTION

A strip of land 30 feet wide, being 3,286.41 feet or 199.176 rods in length, lying in Section 13, Township 26 South, Range 29 East, N. M. P. M., Eddy County, New Mexico, being 15 feet left and 15 feet right of the following described survey of a centerline across B. L. M. land:

BEGINNING at Engr. Sta. 0+00, a point in the Northwest quarter of Section 13, which bears, N 78°25'30" E, 554.08 feet from a brass cap, stamped "1940", found for the West quarter corner of Section 13;

Thence N 00°00'24" E, 128.91 feet, to Engr. Sta. 1+28.91, a P. I. of 60°07'47" right;

Thence N 60°08'11" E, 974.08 feet, to Engr. Sta. 11+02.99, a P. I. of 30°42'07" left;

Thence N 29°26'04" E, 389.36 feet, to Engr. Sta. 14+92.35, a P. I. of 60°33'31" right;

Thence N 89°59'35" E, 1,240.76 feet, to Engr. Sta. 27+33.11, a P. I. of 90°00'19" right;

Thence S 00°00'06" E, 553.30 feet, to Engr. Sta. 32+86.41, the End of Survey, a point in the Northeast quarter of Section 13, which bears, N 83°06'30" W, 2,253.50 feet from a brass cap, stamped "1940", found for the East quarter corner of Section 13.

Said strip of land contains 2.263 acres, more or less, and is allocated by forties as follows:

SW 1/4 NW 1/4	58.100 Rods	0.660 Acres
SE 1/4 NW 1/4	89.747 Rods	1.020 Acres
SW 1/4 NE 1/4	51.329 Rods	0.583 Acres

Copyright 2016 - All Rights Reserved

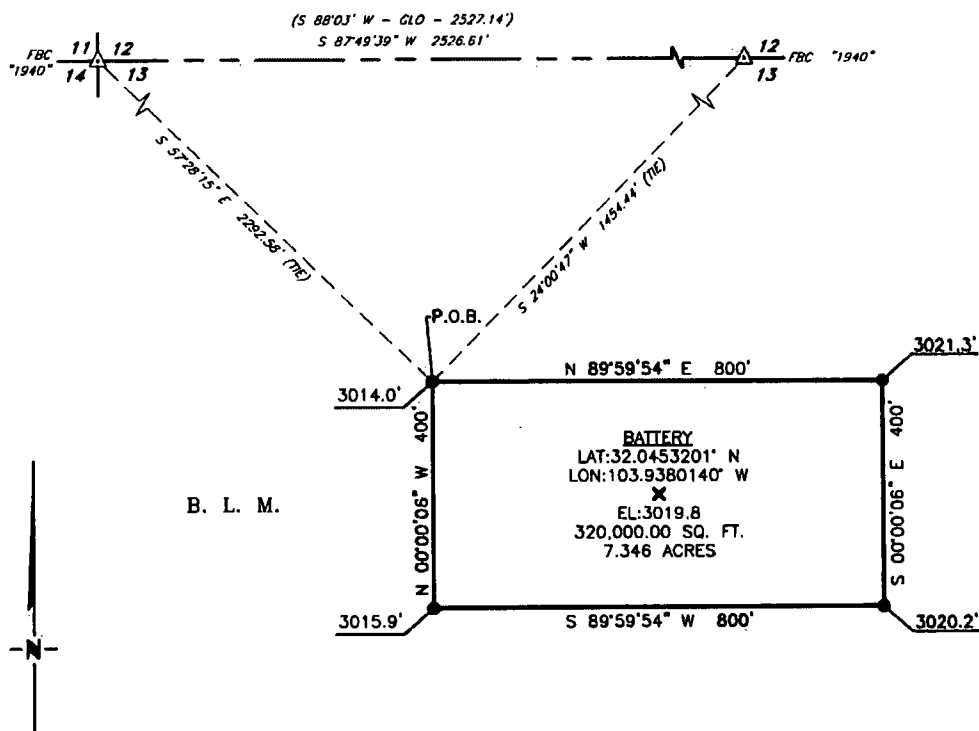
NO.	REVISION	DATE
JOB NO.: LS1811256		
DWG. NO.: 1811256-3		

RRC

701 S. CECIL ST., HOBBS, NM 88240 (575) 964-8200

SCALE: 1" = 1000'
DATE: 11-13-2018
SURVEYED BY: JF/SV
DRAWN BY: KAKN
APPROVED BY: RMH
SHEET: 2 OF 2

MEWBOURNE OIL COMPANY
PROPOSED BATTERY FOR THE FULLER FED COM WELLS
 SECTION 13, T28S, R29E,
 N. M. P. M., EDDY CO., NEW MEXICO



SCALE: 1" = 250'
 0 125' 250'

BEARINGS ARE GRID MAG 83
 NM EAST
 DISTANCES ARE HORIZ. GROUND.

LEGEND

- () RECORD DATA - GLO
 △ FOUND MONUMENT AS NOTED
 P.O.B. POINT OF BEGINNING



I, R. M. Howett, a N. M. Professional Surveyor, hereby certify that I prepared this plat from an actual survey made on the ground under my direct supervision, said survey and plat meet the Min. Stds. for Land Surveying in the State of N. M. and are true and correct to the best of my knowledge and belief.

Robert M. Howett

Robert M. Howett NM PS 18680

DESCRIPTION

A tract of land situated within Section 13, Township 26 South, Range 29 East, N. M. P. M. Eddy County, New Mexico, across B. L. M. land, and being more particularly described by metes and bounds as follows:

BEGINNING at a point which bears, S 57°28'15" E, 2,292.58 feet from a brass cap, stamped "1940", found for the Northwest corner of Section 13 and being S 24°00'47" W, 1,454.44 feet from a brass cap, stamped "1940", found for the North quarter corner of Section 13;

Thence N 89°59'54" E, 800.00 feet, to a point;

Thence S 00°00'06" E, 400.00 feet, to a point;

Thence S 89°59'54" W, 800.00 feet, to a point;

Thence N 00°00'06" W, 400.00 feet, to the Point of Beginning.

Said tract of land contains 320,000.00 square feet or 7.346 acres, more or less, and is allocated by forties as follows:

NE/4 NW/4	12,807.05 Sq. Ft.	0.294 Acres
NW/4 NE/4	1,097.18 Sq. Ft.	0.025 Acres
SE/4 NW/4	225,587.18 Sq. Ft.	5.179 Acres
SW/4 NE/4	80,508.59 Sq. Ft.	1.848 Acres

Copyright 2016 - All Rights Reserved

NO.	REVISION	DATE
JOB NO.:	LS1811256	
DWG. NO.:	1811256-4	

RRC

701 S. CECIL ST., HOBBBS, NM 88240 (575) 964-8200

SCALE: 1" = 250'
 DATE: 11-13-2018
 SURVEYED BY: ML/TF
 DRAWN BY: KAKN
 APPROVED BY: RMH
 SHEET: 1 OF 1