

District I
1625 N. French Dr., Hobbs, NM 88240
Phone: (575) 393-6161 Fax: (575) 393-0720
District II
811 S. First St., Artesia, NM 88210
Phone: (575) 748-1283 Fax: (575) 748-9720
District III
1000 Rio Brazos Road, Aztec, NM 87410
Phone: (505) 334-6178 Fax: (505) 334-6170
District IV
1220 S. St. Francis Dr., Santa Fe, NM 87505
Phone: (505) 476-3460 Fax: (505) 476-3462

State of New Mexico
Energy, Minerals & Natural Resources Department
OIL CONSERVATION DIVISION
1220 South St. Francis Dr.
Santa Fe, NM 87505

Form C-102
Revised August 1, 2011
Submit one copy to appropriate
District Office

☐ AMENDED REPORT

WELL LOCATION AND ACREAGE DEDICATION PLAT

| | | |
|---|---|---|
| ¹ API Number 30-015-44111 | ² Pool Code 98220 | ³ Pool Name Purple Sage; Wolfcamp (Gas) |
| ⁴ Property Code 314218 | ⁵ Property Name BONNIE 35 FEDERAL COM | ⁶ Well Number #2H |
| ⁷ OGRID No. 215099 | ⁸ Operator Name CIMAREX ENERGY CO. | ⁹ Elevation 3339.2' |

¹⁰ Surface Location

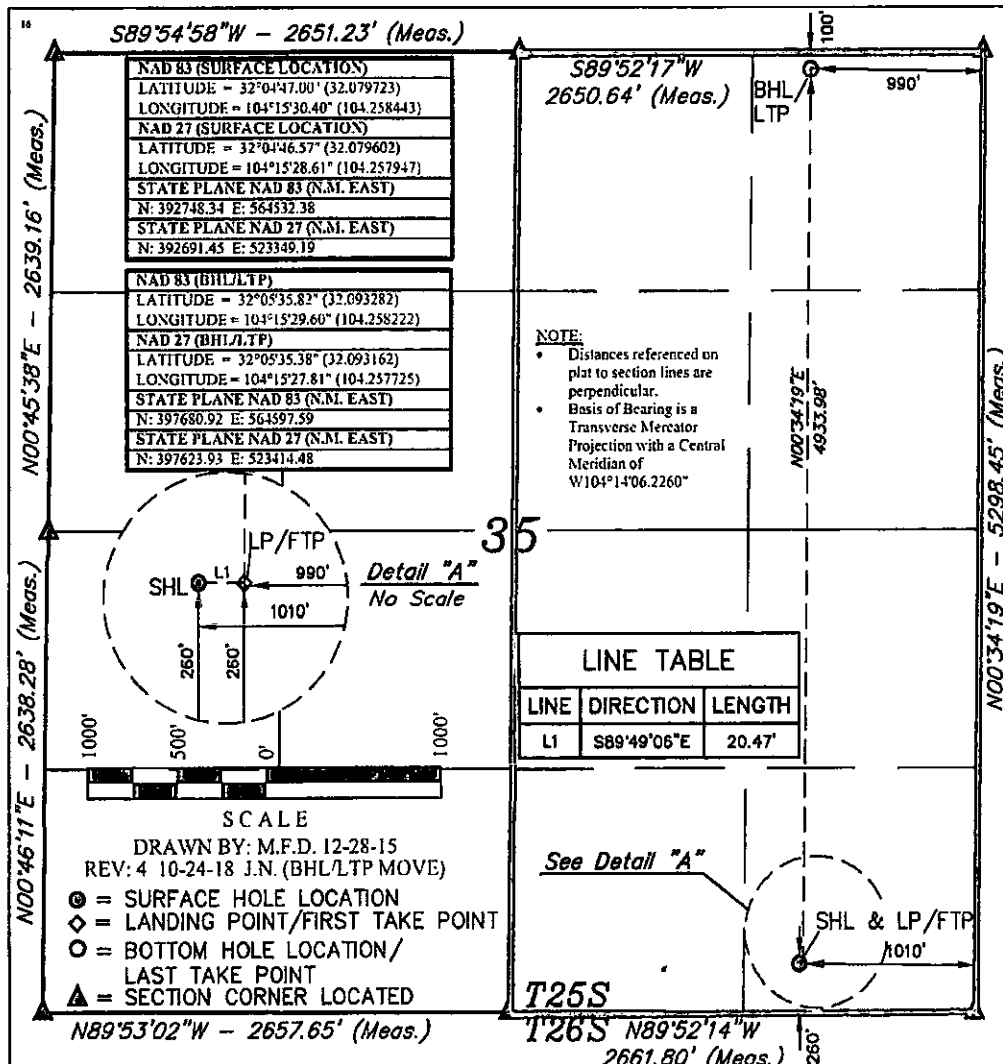
| UL or lot no. | Section | Township | Range | Lot Idn | Feet from the | North/South line | Feet from the | East/West line | County |
|---------------|---------|----------|-------|---------|---------------|------------------|---------------|----------------|--------|
| P | 35 | 25S | 26E | | 260 | SOUTH | 1010 | EAST | EDDY |

¹¹ Bottom Hole Location If Different From Surface

| UL or lot no. | Section | Township | Range | Lot Idn | Feet from the | North/South line | Feet from the | East/West line | County |
|---------------|---------|----------|-------|---------|---------------|------------------|---------------|----------------|--------|
| A | 35 | 25S | 26E | | 100 | NORTH | 990 | EAST | EDDY |

| | | | |
|--------------------------------------|-------------------------------|----------------------------------|-------------------------|
| ¹² Dedicated Acres 320 | ¹³ Joint or Infill | ¹⁴ Consolidation Code | ¹⁵ Order No. |
|--------------------------------------|-------------------------------|----------------------------------|-------------------------|

No allowable will be assigned to this completion until all interests have been consolidated or a non-standard unit has been approved by the division.



17 OPERATOR CERTIFICATION

I hereby certify that the information contained herein is true and complete to the best of my knowledge and belief, and that this organization either owns a working interest or unleased mineral interest in the land including the proposed bottom hole location or has a right to drill this well at this location pursuant to a contract with an owner of such a mineral or working interest, or to a voluntary pooling agreement or a compulsory pooling order heretofore entered by the division.

Signature: Fatima Vasquez Date: 11/14/2018

Printed Name: Fatima Vasquez

E-mail Address: fvasquez@cimarex.com

18 SURVEYOR CERTIFICATION

I hereby certify that the well location shown on this plat was plotted from field notes of actual surveys made by me or under my supervision, and that the same is true and correct to the best of my belief.

Date of Survey: October 07, 2014

Signature and Seal of Professional Surveyor:

PAUL BUCHELE
NEW MEXICO
23782
10-24-18
PROFESSIONAL SURVEYOR

Certificate Number:

RWP 3-22-19