

**W OIL CONSERVATION  
ARTESIA DISTRICT**

Intent ☒ As Drilled ☐

MAR 19 2019

API #  
30.015-45802

**RECEIVED**

Operator Name: APACHE CORPORATION	Property Name: PALMILLO 3 STATE COM	Well Number 244H
--------------------------------------	--	---------------------

Kick Off Point (KOP)

UL D	Section 3	Township 19S	Range 28E	Lot 4	Feet 380	From N/S N	Feet 100	From E/W W	County EDDY
Latitude 32.6959019					Longitude -104.1720775			NAD 83	

First Take Point (FTP)

UL D	Section 3	Township 19S	Range 28E	Lot	Feet 380	From N/S N	Feet 100	From E/W W	County EDDY
Latitude 32.6959019					Longitude -104.1720775			NAD 83	

Last Take Point (LTP)

UL A	Section 3	Township 19S	Range 28E	Lot	Feet 380	From N/S N	Feet 100	From E/W E	County EDDY
Latitude 32.6960578					Longitude -104.1558980			NAD 83	

Is this well the defining well for the Horizontal Spacing Unit? ☐

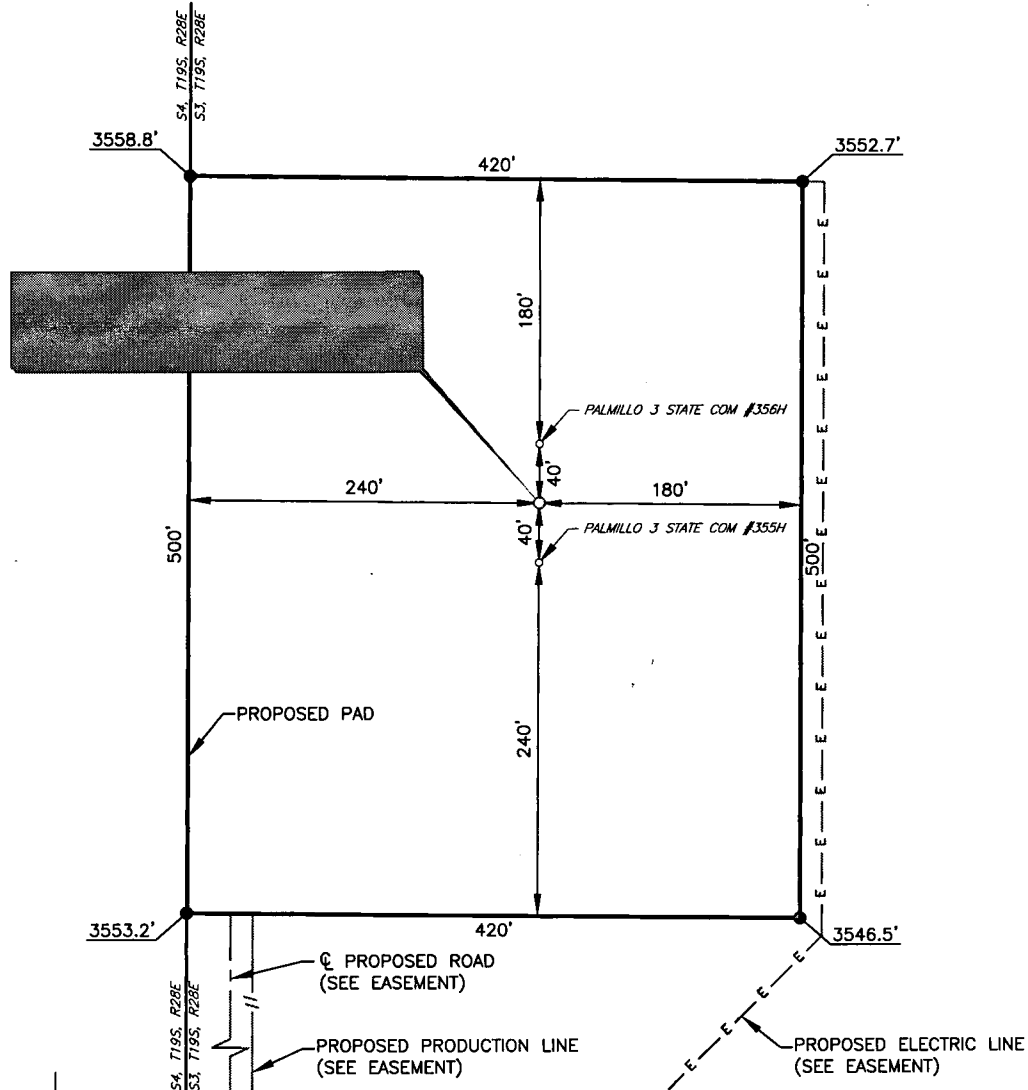
Is this well an infill well? ☐

If infill is yes please provide API if available, Operator Name and well number for Defining well for Horizontal Spacing Unit.

API #		
Operator Name:	Property Name:	Well Number

KZ 06/29/2018

**APACHE CORPORATION  
PALMILLO 3 STATE COM #244H  
(785' FNL & 240' FWL)  
SECTION 3, T19S, R28E  
N. M. P. M., EDDY COUNTY, NEW MEXICO**



**DIRECTIONS TO LOCATION**

From the intersection between CR-246 (Millman Rd.) and CR-235 (Curry Comb Rd.),  
Go Northwest on CR-235 approx. 0.2 miles to proposed road on the right;  
Go North on proposed road approx. 0.8 miles to proposed location on the right.

THIS IS NOT A BOUNDARY SURVEY, APPARENT PROPERTY CORNERS AND  
PROPERTY LINES ARE SHOWN FOR INFORMATION ONLY, BOUNDARY DATA IS  
SHOWN FROM A PREVIOUS SURVEY REFERENCED HEREON.

I, Jeffrey L. Fansler, a N. M. Professional Surveyor, hereby certify  
that I prepared this plat from an actual survey made on the  
ground under my direct supervision, said survey and plat meet  
the Min. Stds. for Land Surveying in the State of N. M. and are  
true and correct to the best of my knowledge and belief.

*Jeffrey L. Fansler*  
Jeffrey L. Fansler NM PS 10034



SCALE: 1" = 100'  
0 50' 100'

BEARINGS ARE GRID NAD 83  
NM EAST  
DISTANCES ARE HORIZ. GROUND.

Copyright 2018 - All Rights Reserved

DATE: 01-08-2018		
NO.	REVISION	DATE
1		
2		
3		
4		

**RRC**

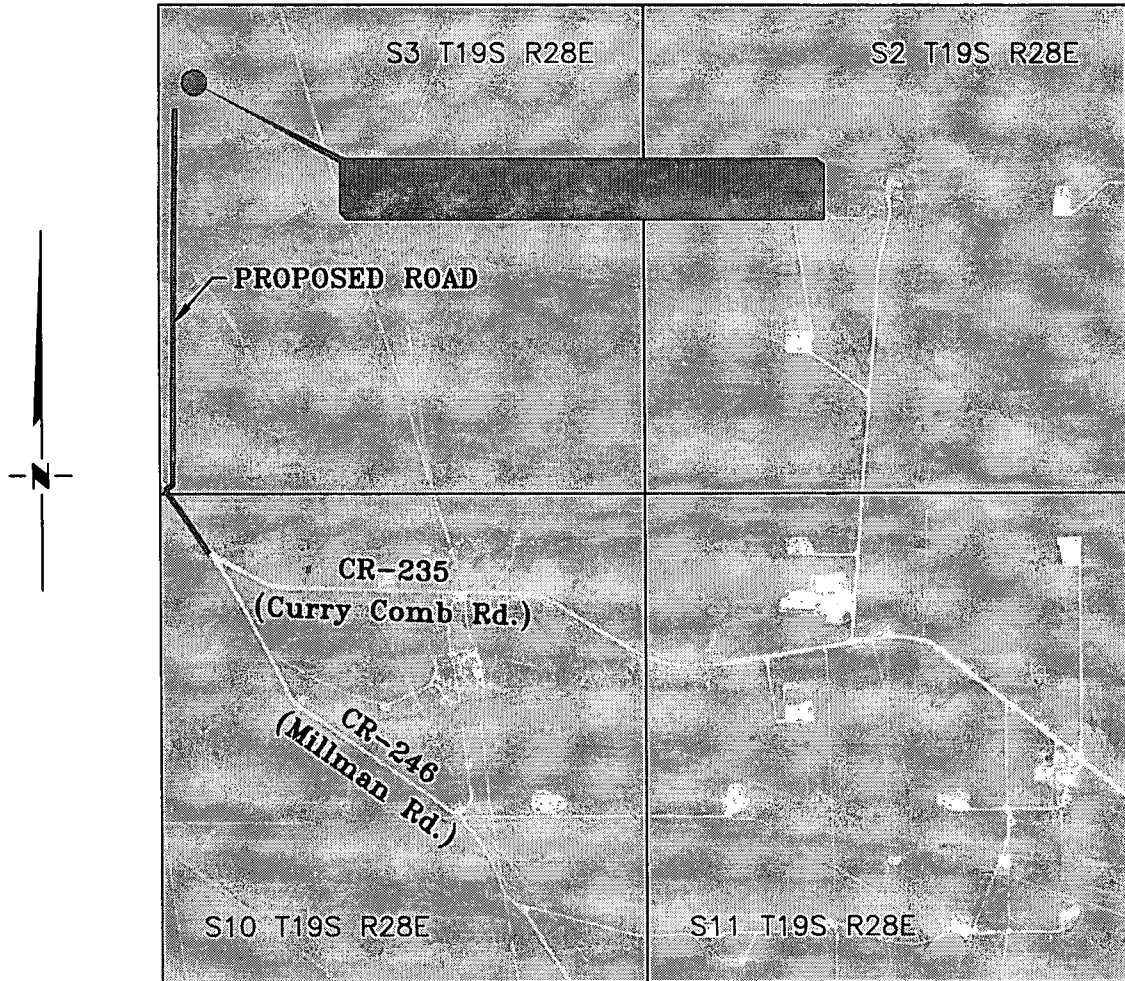
SURVEYING, LLC

701 S. CECIL ST., HOBBS, NM 88240 (575) 964-8200

SCALE: 1" = 100'
SURVEYED BY: AB/RU
DRAWN BY: CAR
APPROVED BY: JLF
JOB NO.: LS18121356
SHEET: 244 PAD

# VICINITY MAP

NOT TO SCALE




*SECTION 3, TWP. 19 SOUTH, RGE. 28 EAST,  
N. M. P. M., EDDY COUNTY, NEW MEXICO*

OPERATOR: Apache Corporation  
LEASE: Palmillo 3 State Com  
WELL NO.: 244H

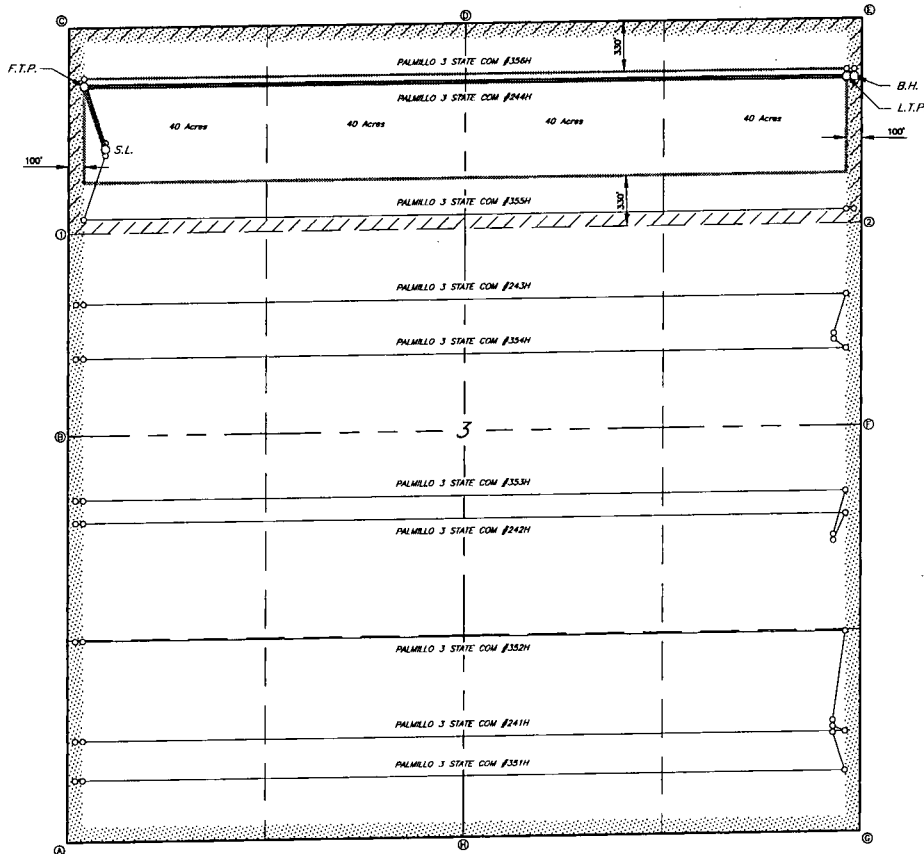
LOCATION: 785' FNL & 240' FWL  
ELEVATION: 3556'

*Copyright 2018 - All Rights Reserved*

DATE: 01-08-2018			 <b>RRC</b> SURVEYING, LLC 701 S. CECIL ST., HOBBS, NM 88240 (575) 964-8200	SCALE: 1" = 2000'	
NO.	REVISION	DATE		SURVEYED BY: AB/RU	
1				DRAWN BY: CAR	
2				APPROVED BY: JLF	
3				JOB NO.: LS18121356	
4				SHEET: 244 VM	

# RRC

ROBERTSON, LLC  
701 S. GARDEN STREET  
HOUSTON, TEXAS 77001 (713) 844-8700



GEODETIC DATA  
NAD 83 GRID - NM EAST  
SURFACE LOCATION (S.L.)  
N 616334.9 - E 591079.9  
LAT:32.6947932° N  
LONG:104.1716367° W  
FIRST TAKE POINT (F.T.P.)  
N 616936.1 - E 590943.7  
LAT:32.6959019° N  
LONG:104.1720775° W  
LAST TAKE POINT (L.T.P.)  
N 617002.8 - E 590920.8  
LAT:32.6960578° N  
LONG:104.1555907° W  
BOTTOM HOLE (B.H.)  
N 617003.4 - E 590970.8  
LAT:32.6960597° N  
LONG:104.1557355° W

CORNER DATA  
NAD 83 GRID - NM EAST  
A: FOUND BRASS CAP "1941"  
N 612029.5 - E 590800.8  
B: FOUND BRASS CAP "1941"  
N 614665.5 - E 590822.7  
C: FOUND BRASS CAP "1941"  
N 617316.8 - E 590847.2  
D: FOUND BRASS CAP "1941"  
N 617350.7 - E 593458.5  
E: FOUND BRASS CAP "1941"  
N 617384.0 - E 596024.3  
F: FOUND BRASS CAP "1941"  
N 614733.8 - E 595998.8  
G: FOUND BRASS CAP "1911"  
N 612093.1 - E 595974.2  
H: FOUND BRASS CAP "1941"  
N 612090.8 - E 593387.2  
CALCULATED POINTS  
1: N 615983.6 - E 590834.9  
2: N 616051.9 - E 595012.0

Copyright 2018 All Rights Reserved

APACHE CORPORATION

LEASE AREA FOR THE  
PALMITO 3 STATE COM #244H  
SECTION 3, T10S, R28E  
EDDY COUNTY, NEW MEXICO

SCALE: 1"=600' SURVEYED BY: AB/RU JOB No.: LS18121358  
DATE: 01-08-2018 DRAWN BY: CAR DWG: 244 LEASE  
REV: APPROVED BY: JUT SHEET: 1 OF 1

SCALE: 1" = 600'  
0 300' 600'

BEARINGS ARE GRID NAD 83  
NM EAST  
DISTANCES ARE HORIZ. GROUND.

LEGEND

//// LEASE AREA  
//// ALLOCATED AREA