

RECEIVED

APR 24 2019

DISTRICT I
1625 N. FRENCH DR., HOHRS, NM 88240
Phone: (505) 393-6161 Fax: (505) 393-0720

DISTRICT II
811 S. FIRST ST., ARTESIA, NM 88210
Phone: (505) 748-1283 Fax: (505) 748-0720

DISTRICT III
1000 RIO BRAZOS RD., AZTEC, NM 87410
Phone: (505) 334-6178 Fax: (505) 334-6170

DISTRICT IV
1220 S. ST. FRANCIS DR., SANTA FE, NM 87505
Phone: (505) 476-3460 Fax: (505) 476-3462

State of New Mexico
Energy, Minerals & Natural Resources Department

OIL CONSERVATION DIVISION
1220 SOUTH ST. FRANCIS DR.
Santa Fe, New Mexico 87505

Form C-102
Revised August 1, 2011
Submit one copy to appropriate
District Office

☐ AMENDED REPORT

WELL LOCATION AND ACREAGE DEDICATION PLAT

| | | |
|-----------------------------------|--|---|
| API Number 30-015-45910 | Pool Code 53805 | Pool Name Sand Dunes Bone Spring South |
| Property Code 325417 | Property Name TODD 36-25 STATE FED COM | Well Number 235H |
| OGRID No. 6137 | Operator Name DEVON ENERGY PRODUCTION COMPANY, L.P. | Elevation 3508.8' |

Surface Location

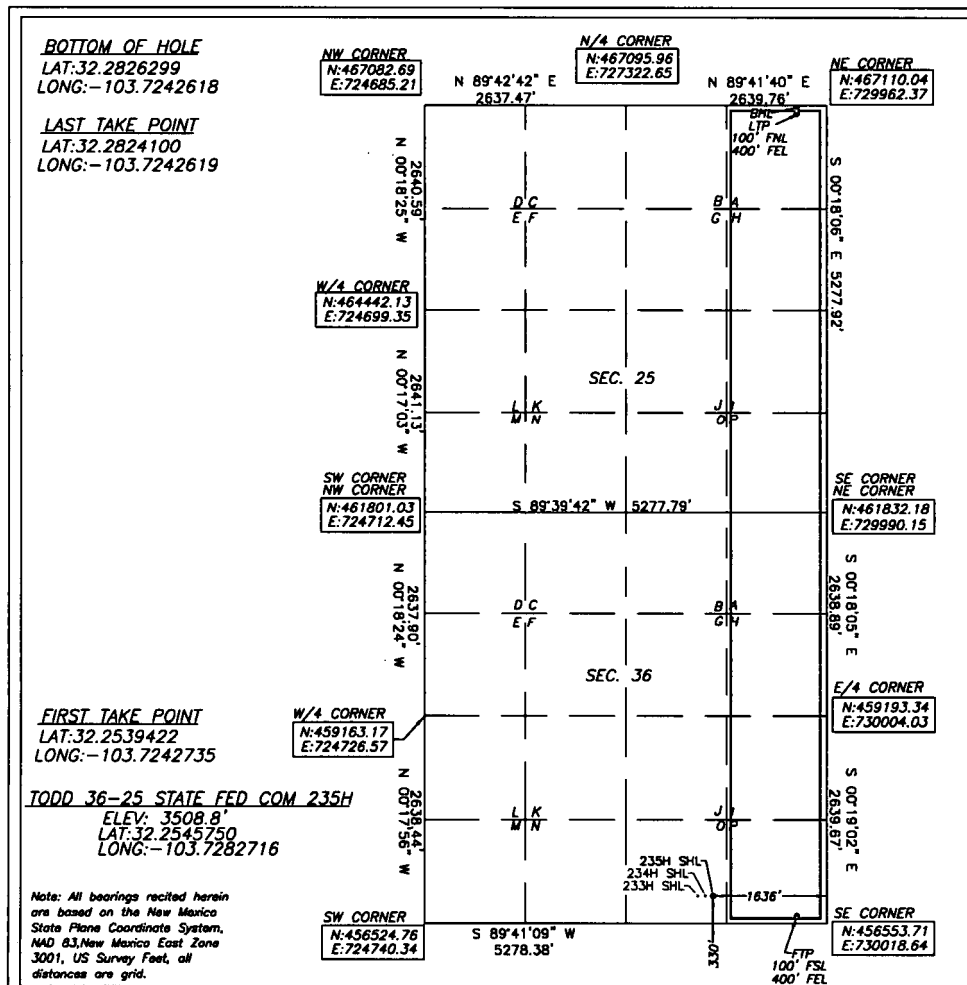
| UL or lot No. | Section | Township | Range | Lot Idn | Feet from the | North/South line | Feet from the | East/West line | County |
|---------------|---------|----------|-------|---------|---------------|------------------|---------------|----------------|--------|
| 0 | 36 | 23-S | 31-E | | 330 | SOUTH | 1636 | EAST | EDDY |

Bottom Hole Location If Different From Surface

| UL or lot No. | Section | Township | Range | Lot Idn | Feet from the | North/South line | Feet from the | East/West line | County |
|---------------|---------|----------|-------|---------|---------------|------------------|---------------|----------------|--------|
| A | 25 | 23-S | 31-E | | 20 | NORTH | 400 | EAST | EDDY |

| Dedicated Acres | Joint or Infill | Consolidation Code | Order No. |
|-----------------|-----------------|--------------------|-----------|
| 320 | | | |

NO ALLOWABLE WILL BE ASSIGNED TO THIS COMPLETION UNTIL ALL INTERESTS HAVE BEEN CONSOLIDATED
OR A NON-STANDARD UNIT HAS BEEN APPROVED BY THE DIVISION



OPERATOR CERTIFICATION

I hereby certify that the information herein is true and complete to the best of my knowledge and belief, and that this organization either owns a working interest or unleased mineral interest in the land including the proposed bottom hole location or has a right to drill this well at this location pursuant to a contract with an owner of such mineral or working interest, or to a voluntary pooling agreement or a compulsory pooling order heretofore entered by the division.

Signature: *Jenny Harms* Date: 10-5-2018

Printed Name: Jenny Harms
E-mail Address: Jenny.harms@dvn.com

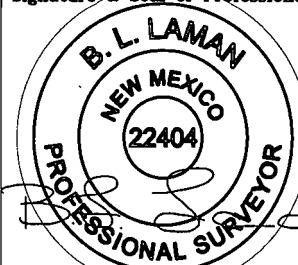
SURVEYOR CERTIFICATION

I hereby certify that the well location shown on this plat was plotted from field notes of actual surveys made by me or under my supervision, and that the same is true and correct to the best of my belief.

09/2018

Date of Survey

Signature & Seal of Professional Surveyor



09/23/18

Certificate No. 22404 B.L. LAMAN
Date of Survey: 9/15/18 DRAWN BY: CM

RWP 4-24-19