

District I
1625 N. French Dr., Hobbs, NM 88240
Phone: (575) 393-6161 Fax: (575) 393-0720
District II
811 S. First St., Artesia, NM 88210
Phone: (505) 748-1283 Fax: (505) 748-9720
District III
1000 Rio Brazos Road, Aztec, NM 87410
Phone: (505) 334-6178 Fax: (505) 334-6170
District IV
1220 S. St. Francis Dr., Santa Fe, NM 87505
Phone: (505) 476-3460 Fax: (505) 476-3462

State of New Mexico
Energy, Minerals & Natural Resources Department
OIL CONSERVATION DIVISION
1220 South St. Francis Dr.
Santa Fe, NM 87505

RECEIVED

Form C-102

Revised August 1, 2011

Submit one copy to appropriate
District Office

APR 12 2019

DISTRICT II-ARTESIA O.C.D.

☐ AMENDED REPORT

WELL LOCATION AND ACREAGE DEDICATION PLAT AS-DRILLED PLAT

¹ API Number 30-015-44364	² Pool Code 98220	³ Pool Name PURPLE SAGE; WOLFCAMP
⁴ Property Code 317788	⁵ Property Name REMUDA SOUTH 25 STATE	
⁷ OGRID No. 005380	⁸ Operator Name XTO ENERGY INC.	⁶ Well Number 101H ⁹ Elevation 3,062'

¹⁰ Surface Location

UL or lot no.	Section	Township	Range	Lot Idn	Feet from the	North/South line	Feet from the	East/West line	County
E	25	23 S	29 E		2,280	NORTH	615	WEST	EDDY

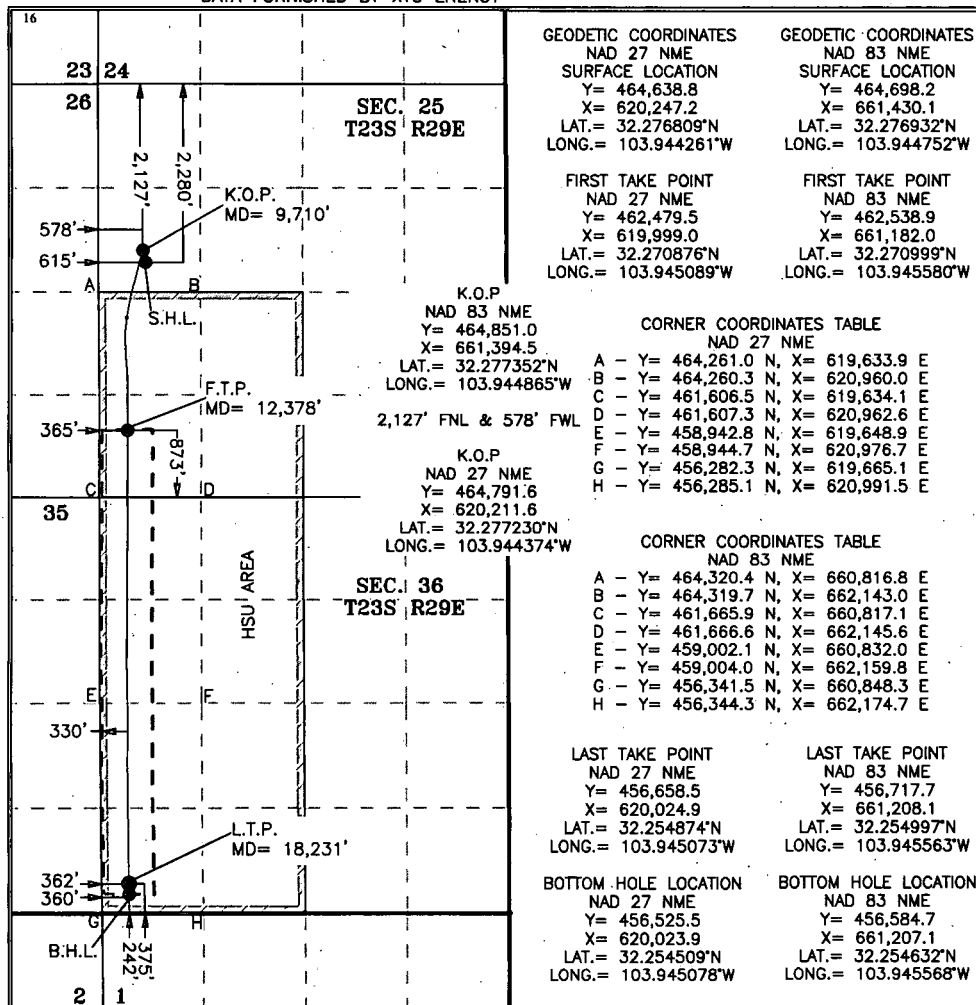
¹¹ Bottom Hole Location If Different From Surface

UL or lot no.	Section	Township	Range	Lot Idn	Feet from the	North/South line	Feet from the	East/West line	County
M	36	23 S	29 E		242	SOUTH	360	WEST	EDDY

¹² Dedicated Acres 480	¹³ Joint or Infill	¹⁴ Consolidation Code	¹⁵ Order No.
--------------------------------------	-------------------------------	----------------------------------	-------------------------

No allowable will be assigned to this completion until all interests have been consolidated or a non-standard unit has been approved by the division.

NOTE: AS-DRILLED BOTTOM HOLE PLOTTED FROM
DATA FURNISHED BY XTO ENERGY



17 OPERATOR CERTIFICATION
I hereby certify that the information contained herein is true and complete to the best of my knowledge and belief, and that this organization either owns a working interest or unleased mineral interest in the land including the proposed bottom hole location or has a right to drill this well at this location pursuant to a contract with an owner of such a mineral or working interest, or to a voluntary pooling agreement or a compulsory pooling order heretofore entered by the division.

Signature: Cheryl Rowell Date: 2/26/19

Printed Name: Cheryl Rowell

E-mail Address: cheryl_rowell@xtoenergy.com

18 SURVEYOR CERTIFICATION
I hereby certify that the well location shown on this plat was plotted from field notes of actual surveys made by me or under my supervision, and that the same is true and correct to the best of my belief.

Date of Survey: 2-26-2019

Signature and Seal of Professional Surveyor:

MARK DILLON HARP 23786
Certificate Number

JC 2018061555