

RECEIVED

APR 26 2019

DISTRICT I
1625 N. FRENCH DR., ROSHS, NM 86240
Phone: (505) 353-6161 Fax: (505) 353-0720

DISTRICT II
811 S. FIRST ST., ARTESIA, NM 88210
Phone: (505) 748-1283 Fax: (505) 748-0720

DISTRICT III
1000 RIO BRAZOS RD., AZTEC, NM 87410
Phone: (505) 334-6176 Fax: (505) 334-6170

DISTRICT IV
1220 S. ST. FRANCIS DR., SANTA FE, NM 87505
Phone: (505) 476-3480 Fax: (505) 476-3482

State of New Mexico
Energy, Minerals & Natural Resources Department
OIL CONSERVATION DIVISION
1220 SOUTH ST. FRANCIS DR.
Santa Fe, New Mexico 87505

DISTRICT II-ARTESIA O.C.D.

Form C-102

Revised August 1, 2011
Submit one copy to appropriate
District Office

☐ AMENDED REPORT

WELL LOCATION AND ACREAGE DEDICATION PLAT

API Number 30-015-45939	Pool Code 98236	Pool Name WC-015-08 S 233135D
Property Code 3522	Property Name TODD 36 STATE	Well Number 625H
GRID No. 6137	Operator Name DEVON ENERGY PRODUCTION COMPANY, L.P.	Elevation 3516.4'

Surface Location

UL or lot No.	Section	Township	Range	Lot Idn	Feet from the	North/South line	Feet from the	East/West line	County
M	36	23-S	31-E		180	SOUTH	485	WEST	EDDY

Bottom Hole Location If Different From Surface

UL or lot No.	Section	Township	Range	Lot Idn	Feet from the	North/South line	Feet from the	East/West line	County
D	36	23-S	31-E		20	NORTH	1130	WEST	EDDY
Dedicated Acres 320	Joint or Infill	Consolidation Code	Order No.						

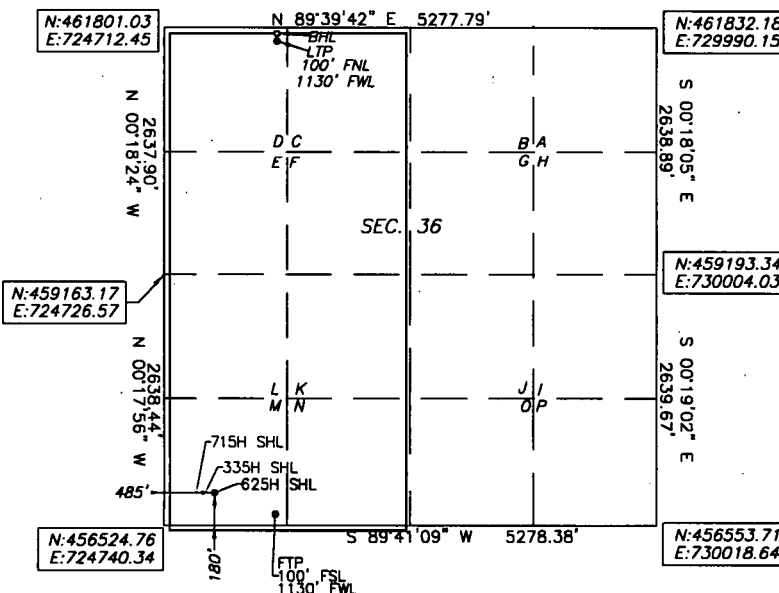
NO ALLOWABLE WILL BE ASSIGNED TO THIS COMPLETION UNTIL ALL INTERESTS HAVE BEEN CONSOLIDATED
OR A NON-STANDARD UNIT HAS BEEN APPROVED BY THE DIVISION

TODD 36 STATE 625H
ELEV: 3516.4'
LAT: 32.254164
LONG: -103.738485
N: 456707.42
E: 725224.39

FIRST TAKE POINT
LAT: 32.253944
LONG: -103.736398
N: 456630.96
E: 725869.80

BOTTOM OF HOLE
LAT: 32.268119
LONG: -103.736394
N: 461787.70
E: 725842.53

LAST TAKE POINT
LAT: 32.267899
LONG: -103.736394
N: 461707.70
E: 725842.96



Note: All bearings recited herein are based on the New Mexico State Plane Coordinate System, NAD 83, New Mexico East Zone 3001, US Survey Feet, all distances are grid.

OPERATOR CERTIFICATION

I hereby certify that the information herein is true and complete to the best of my knowledge and belief, and that this organization either owns a working interest or unleased mineral interest in the land including the proposed bottom hole location or has a right to drill this well at this location pursuant to a contract with an owner of such mineral or working interest, or to a voluntary pooling agreement or a compulsory pooling order heretofore entered by the division.

Jenny Harms 4-23-2019
Signature Date
JENNY HARMS
Printed Name
JENNY.HARMS@DVN.COM
E-mail Address

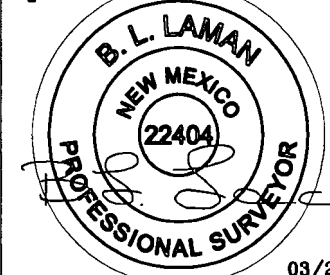
SURVEYOR CERTIFICATION

I hereby certify that the well location shown on this plat was plotted from field notes of actual surveys made by me or under my supervision, and that the same is true and correct to the best of my belief.

3/2019

Date of Survey

Signature & Seal of Professional Surveyor



03/22/19

Certificate No. 22404 B.L. LAMAN

DRAWN BY: C.MAAS 3/18/19

PWP 4-30-19