

RECEIVED

APR 26 2019

DISTRICT I
1625 N. FRENCH DR., HOBBS, NM 88240
Phone: (575) 393-6161 Fax: (575) 393-0720

DISTRICT II
811 S. FIRST ST., ARTESIA, NM 88210
Phone: (575) 748-1283 Fax: (575) 748-0720

DISTRICT III
1000 RIO BRAZOS RD., AZTEC, NM 87410
Phone: (505) 334-6175 Fax: (505) 334-6170

DISTRICT IV
1220 S. ST. FRANCIS DR., SANTA FE, NM 87505
Phone: (505) 476-3460 Fax: (505) 476-3462

State of New Mexico
Energy, Minerals & Natural Resources Department
OIL CONSERVATION DIVISION
1220 SOUTH ST. FRANCIS DR.
Santa Fe, New Mexico 87505

DISTRICT II-ARTESIA O.C.D. Form C-102
Revised August 1, 2011
Submit one copy to appropriate
District Office

☐ AMENDED REPORT

WELL LOCATION AND ACREAGE DEDICATION PLAT

API Number 30-015-45940	Pool Code 98236	Pool Name WC-015-G-08.52337350
Property Code 3522	Property Name TODD 36 STATE	Well Number 715H
OGRID No. 6137	Operator Name DEVON ENERGY PRODUCTION COMPANY, L.P.	Elevation 3517.1'

Surface Location

UL or lot No.	Section	Township	Range	Lot Idn	Feet from the	North/South line	Feet from the	East/West line	County
M	36	23-S	31-E		180	SOUTH	425	WEST	EDDY

Bottom Hole Location If Different From Surface

UL or lot No.	Section	Township	Range	Lot Idn	Feet from the	North/South line	Feet from the	East/West line	County
D	36	23-S	31-E		20	NORTH	330	WEST	EDDY
Dedicated Acres 320	Joint or Infill	Consolidation Code	Order No.						

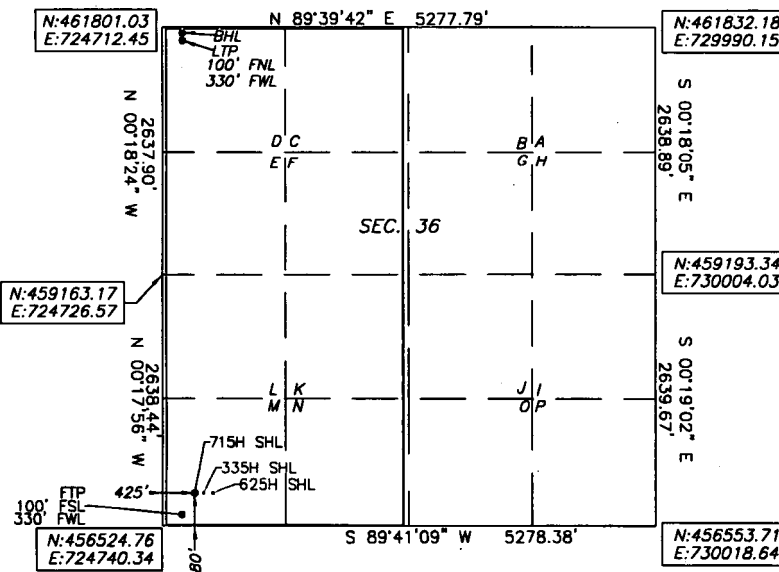
NO ALLOWABLE WILL BE ASSIGNED TO THIS COMPLETION UNTIL ALL INTERESTS HAVE BEEN CONSOLIDATED
OR A NON-STANDARD UNIT HAS BEEN APPROVED BY THE DIVISION

TODD 36 STATE 715H
ELEV: 3517.1
LAT: 32.254164
LONG: -103.738679
N: 456707.09
E: 725164.40

FIRST TAKE POINT
LAT: 32.253944
LONG: -103.738986
N: 456626.57
E: 725069.81

BOTTOM OF HOLE
LAT: 32.268118
LONG: -103.738982
N: 461782.98
E: 725042.55

LAST TAKE POINT
LAT: 32.267898
LONG: -103.738982
N: 461702.98
E: 725042.98



Note: All bearings recited herein
are based on the New Mexico
State Plane Coordinate System,
NAD 83, New Mexico East Zone
3001, US Survey Feet, all
distances are grid.

OPERATOR CERTIFICATION

I hereby certify that the information
herein is true and complete to the best of
my knowledge and belief, and that this
organization either owns a working interest
or unleased mineral interest in the land
including the proposed bottom hole location
or has a right to drill this well at this
location pursuant to a contract with an
owner of such mineral or working interest,
or to a voluntary pooling agreement or a
compulsory pooling order heretofore entered
by the division.

Jenny Harms 4-23-2019
Signature Date

JENNY HARMS

Printed Name

JENNY.HARMS@DVN.COM

E-mail Address

SURVEYOR CERTIFICATION

I hereby certify that the well location
shown on this plat was plotted from field
notes of actual surveys made by me or
under my supervision, and that the same is
true and correct to the best of my belief.

3/2019

Date of Survey

Signature & Seal of Professional Surveyor



03/22/19

Certificate No. 22404 B.L. LAMAN

DRAWN BY: C.MAAS 3/18/19

RUP 4-30-19