

RECEIVED

District I
1625 N. French Dr., Hobbs, NM 88240
District II
811 S. First St., Artesia, NM 88210
District III
1000 Rio Brazos Road, Aztec, NM 87410
District IV
1220 S. St. Francis Dr., Santa Fe, NM 87505

State of New Mexico
Energy, Minerals and Natural Resources Department

APR 26 2019 Submit Original
to Appropriate
District Office

Oil Conservation Division
1220 South St. Francis Dr.
Santa Fe, NM 87505

DISTRICT II-ARTESIA O.C.D.

GAS CAPTURE PLAN

Date: 4/11/2019

☒ Original

Devon & OGRID No.: Devon Energy Production Co., L.P. 6137

☐ Amended - Reason for Amendment: _____

This Gas Capture Plan outlines actions to be taken by the Devon to reduce well/production facility flaring/venting for new completion (new drill, recomple to new zone, re-frac) activity.

Note: Form C-129 must be submitted and approved prior to exceeding 60 days allowed by Rule (Subsection A of 19.15.18.12 NMAC).

Well(s)/Production Facility – Name of facility

The well(s) that will be located at the production facility are shown in the table below.

Well Name	API	Well Location (ULSTR)	Footages	Expected MCF/D	Flared or Vented	Comments
Todd 36 STATE 715H		UNIT M, SEC 36, T23S, R31E	180 FSL 425 FWL			Todd 36 CTB 1
Todd 36 STATE 335H		UNIT M, SEC 36, T23S, R31E	180 FSL 455 FWL			Todd 36 CTB 1
Todd 36 STATE 625H		UNIT M, SEC 36, T23S, R31E	180 FSL 485 FWL			Todd 36 CTB 1

Gathering System and Pipeline Notification

Well(s) will be connected to a production facility after flowback operations are complete, if DCP system is in place. The gas produced from production facility is dedicated to DCP and will be connected to DCP low/high pressure gathering system located in Lea County, New Mexico. It will require 0' of pipeline to connect the facility to low/high pressure gathering system. Devon provides (periodically) to DCP a drilling, completion and estimated first production date for wells that are scheduled to be drilled in the foreseeable future. In addition, Devon and DCP have periodic conference calls to discuss changes to drilling and completion schedules. Gas from these wells will be processed at DCP Processing Plant located in Sec 19, Twn. 19S, Rng. 32E, Lea County, New Mexico. The actual flow of the gas will be based on compression operating parameters and gathering system pressures.

Flowback Strategy

After the fracture treatment/completion operations, well(s) will be produced to temporary production tanks and gas will be flared or vented. During flowback, the fluids and sand content will be monitored. When the produced fluids contain minimal sand, the wells will be turned to production facilities. Gas sales should start as soon as the wells start flowing through the production facilities, unless there are operational issues on DCP system at that time. Based on current information, it is Devon's belief the system can take this gas upon completion of the well(s).

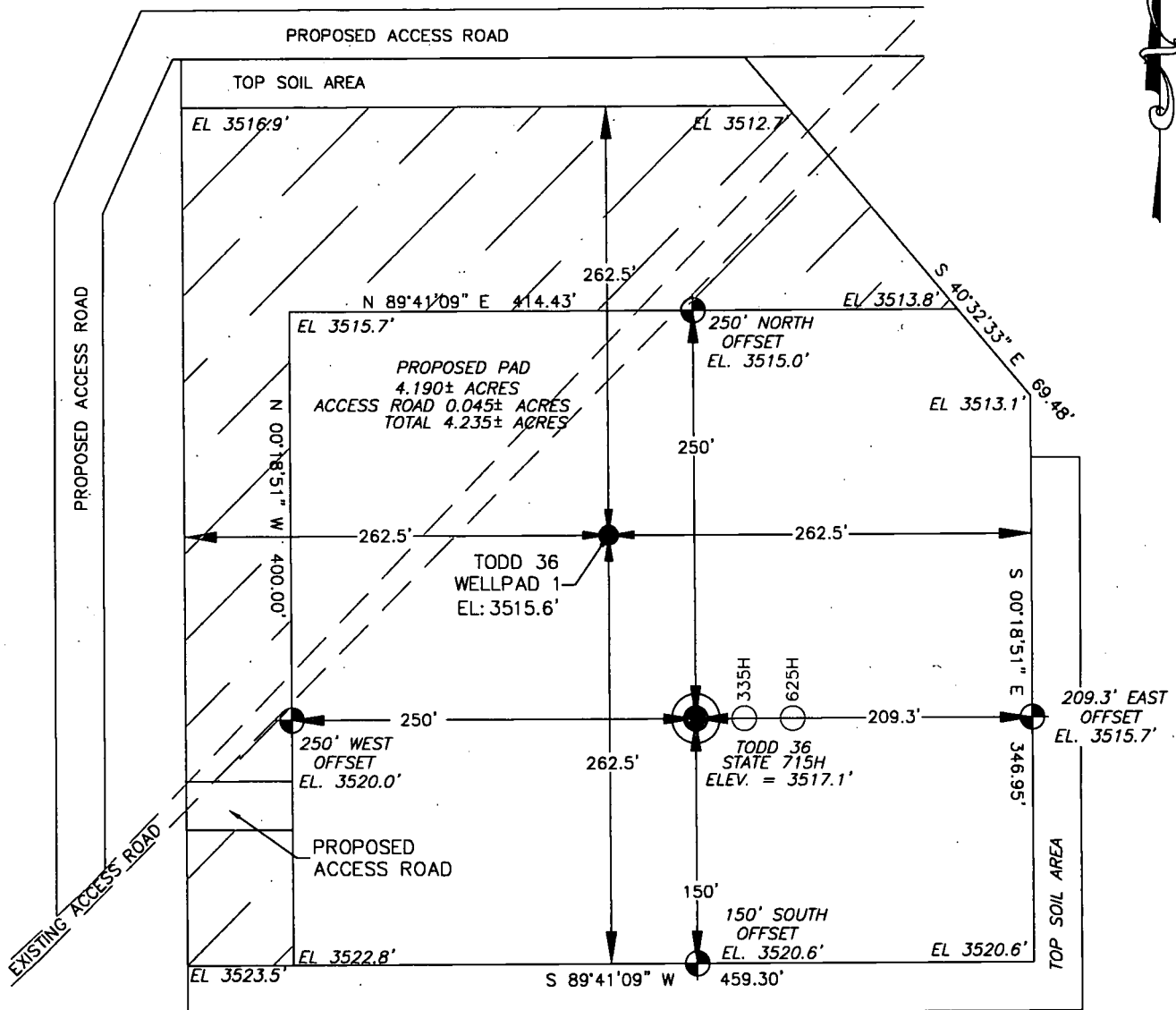
Safety requirements during cleanout operations from the use of underbalanced air cleanout systems may necessitate that sand and non-pipeline quality gas be vented and/or flared rather than sold on a temporary basis.

Alternatives to Reduce Flaring

Below are alternatives considered from a conceptual standpoint to reduce the amount of gas flared.

- Power Generation – On lease
 - Only a portion of gas is consumed operating the generator, remainder of gas will be flared
- Compressed Natural Gas – On lease
 - Gas flared would be minimal, but might be uneconomical to operate when gas volume declines
- NGL Removal – On lease
 - Plants are expensive, residue gas is still flared, and uneconomical to operate when gas volume declines

SECTION 36, TOWNSHIP 23 SOUTH, RANGE 31 EAST, N.M.P.M.
EDDY COUNTY, STATE OF NEW MEXICO
SITE MAP



Note: All bearings recited herein are based on the New Mexico State Plane Coordinate System, NAD 83, New Mexico East Zone 3001, US Survey Feet, all distances are grid.

DEVON ENERGY PRODUCTION COMPANY, L.P.
TODD 36 STATE 715H
LOCATED 180 FT. FROM THE SOUTH LINE
AND 425 FT. FROM THE WEST LINE OF
SECTION 36, TOWNSHIP 23 SOUTH,
RANGE 31 EAST, N.M.P.M.
EDDY COUNTY, STATE OF NEW MEXICO

HORIZON ROW LLC

Drawn for:

DEVON ENERGY PRODUCTION CO., L.P.

Drawn by:
CHRIS MAAS

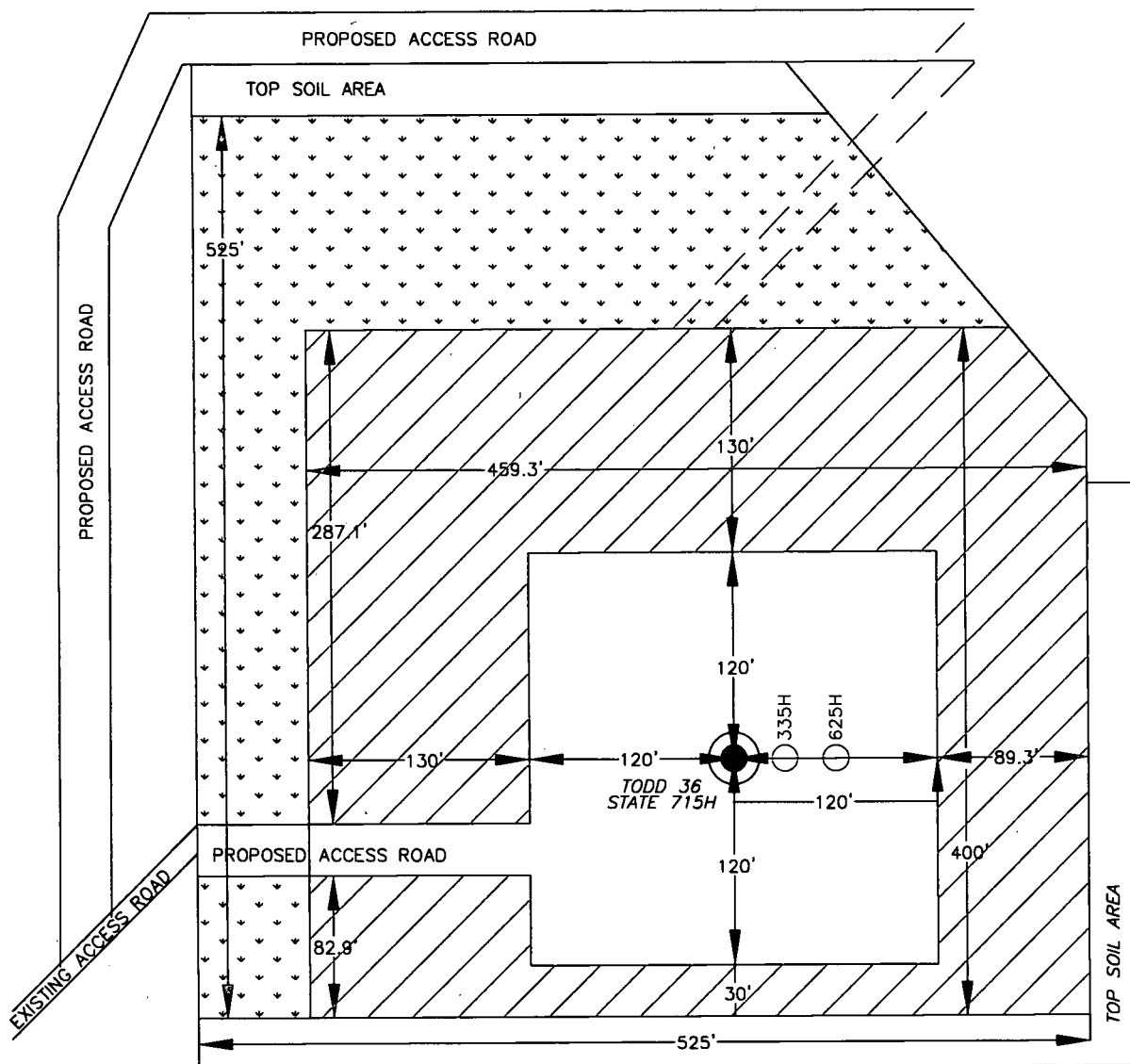
Date: 03/18/2019
Rev. Date: 03/20/2019



devon

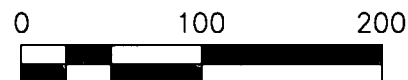
DIRECTIONS TO LOCATION
FROM THE INTERSECTION OF NM-128 AND RED ROAD HEAD NORTH ON
RED ROAD FOR 0.09 MILES. TURN RIGHT ONTO AN ACCESS ROAD
AND HEAD NORTHEAST FOR 0.08 MILES TO THE SOUTHWEST CORNER OF
THE TODD 36 WELLPAD 1.

SECTION 36, TOWNSHIP 23 SOUTH, RANGE 31 EAST, N.M.P.M.
EDDY COUNTY, STATE OF NEW MEXICO
INTERIM SITE BUILD PLAN



/// DENOTES INTERIM PAD RECLAMATION AREA
 . . . DENOTES GRADING SITE RECLAMATION AREA

2.779± ACRES INTERIM PAD RECLAMATION AREA
 1.784± ACRES GRADING SITE RECLAMATION AREA
 1.457± ACRES NON-RECLAIMED AREA
 6.020± ACRES GRADING SITE RECLAMATION AREA



DEVON ENERGY PRODUCTION COMPANY, L.P.
 TODD 36 STATE 715H
 LOCATED 180 FT. FROM THE SOUTH LINE
 AND 425 FT. FROM THE WEST LINE OF
 SECTION 36, TOWNSHIP 23 SOUTH,
 RANGE 31 EAST, N.M.P.M.
 EDDY COUNTY, STATE OF NEW MEXICO

HORIZON ROW LLC

DEVON ENERGY PRODUCTION CO., L.P.

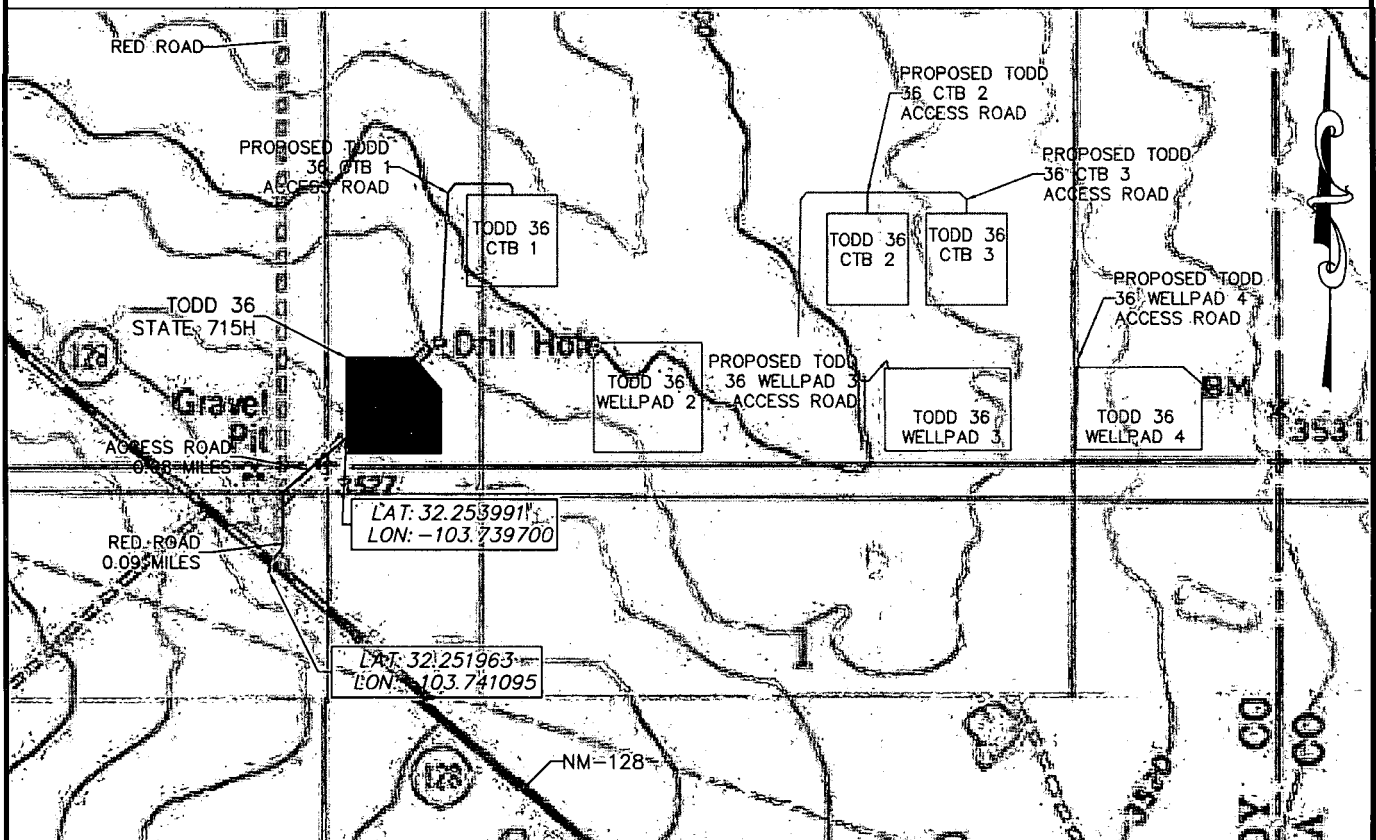
Drawn by:
CHRIS MAAS

Date: 03/18/2019
Rev. Date: 03/20/2019

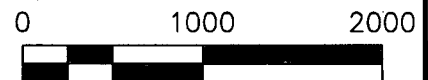
Drawn for:



SECTION 36, TOWNSHIP 23 SOUTH, RANGE 31 EAST, N.M.P.M.
EDDY COUNTY, STATE OF NEW MEXICO
VICINITY MAP



DEVON ENERGY PRODUCTION COMPANY, L.P.
TODD 36 STATE 715H
LOCATED 180 FT. FROM THE SOUTH LINE
AND 425 FT. FROM THE WEST LINE OF
SECTION 36, TOWNSHIP 23 SOUTH,
RANGE 31 EAST, N.M.P.M.
EDDY COUNTY, STATE OF NEW MEXICO



DIRECTIONS TO LOCATION

FROM THE INTERSECTION OF NM-128 AND RED ROAD HEAD
NORTH ON RED ROAD FOR 0.09 MILES. TURN RIGHT ONTO AN
ACCESS ROAD AND HEAD NORTHEAST FOR 0.08 MILES TO THE
SOUTHWEST CORNER OF THE TODD 36 WELLPAD 1.

HORIZON ROW LLC

DEVON ENERGY PRODUCTION CO., L.P.

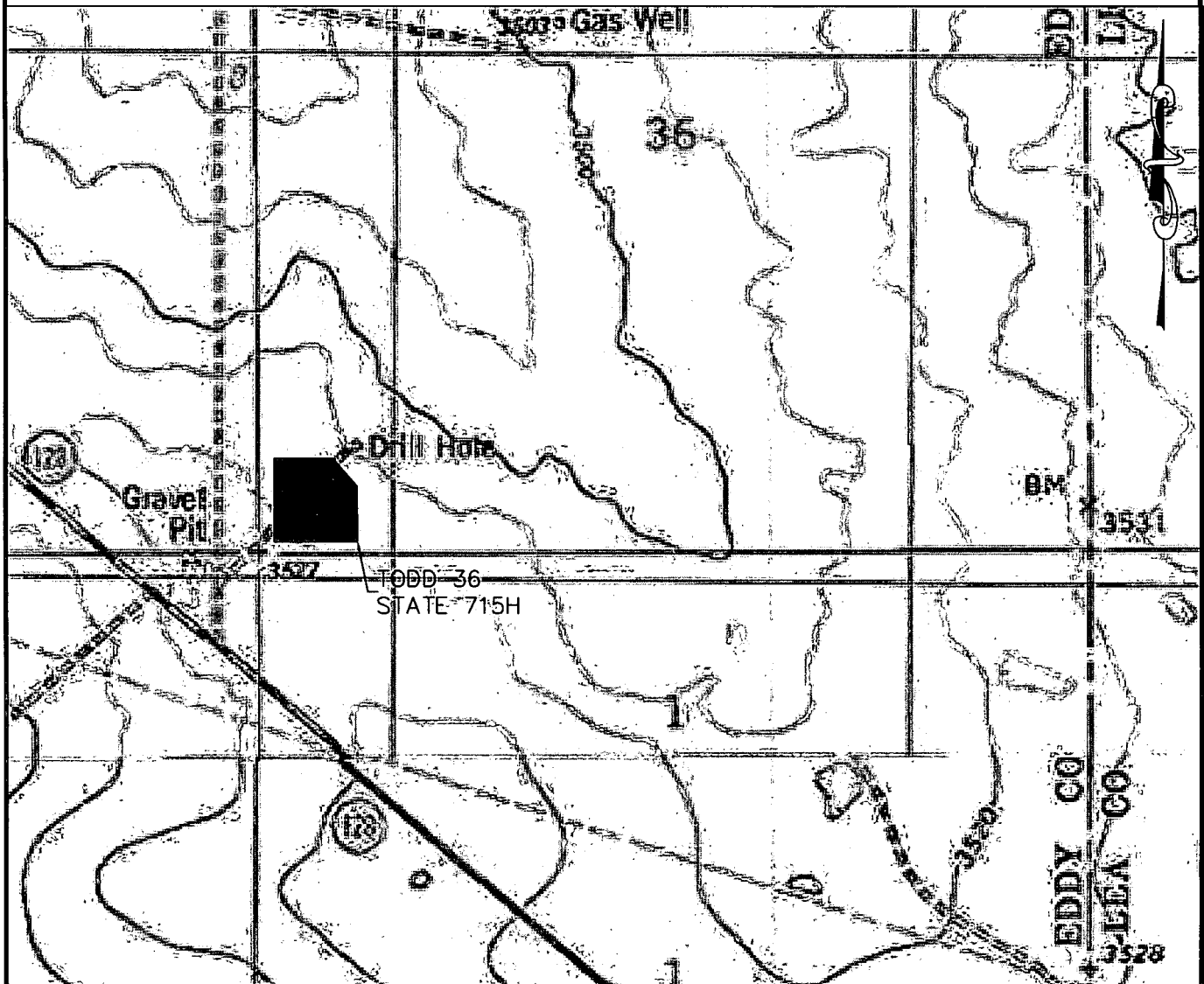
Drawn by:
CHRIS MAAS

Date: 03/18/2019

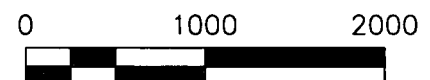
Drawn for:

devon

SECTION 36, TOWNSHIP 23 SOUTH, RANGE 31 EAST, N.M.P.M.
 EDDY COUNTY, STATE OF NEW MEXICO
 LOCATION VERIFICATION MAP



DEVON ENERGY PRODUCTION COMPANY, L.P.
 TODD 36 STATE 715H
 LOCATED 180 FT. FROM THE SOUTH LINE
 AND 425 FT. FROM THE WEST LINE OF
 SECTION 36, TOWNSHIP 23 SOUTH,
 RANGE 31 EAST, N.M.P.M.
 EDDY COUNTY, STATE OF NEW MEXICO



HORIZON ROW LLC

DEVON ENERGY PRODUCTION CO., L.P.

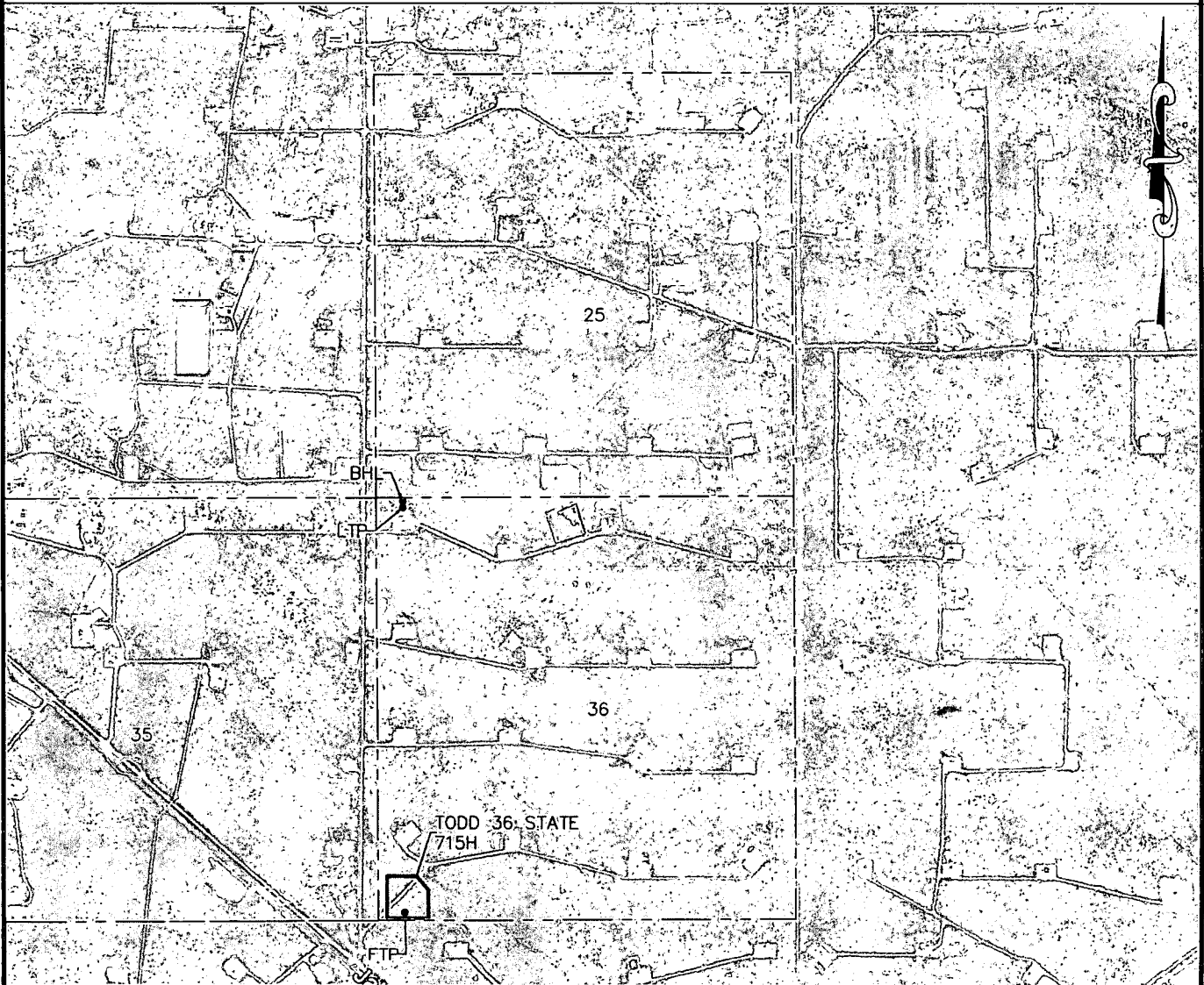
Drawn by:
 CHRIS MAAS

Date: 03/18/2019

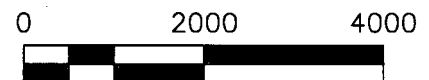
Drawn for:

devon

SECTION 36, TOWNSHIP 23 SOUTH, RANGE 31 EAST, N.M.P.M.
EDDY COUNTY, STATE OF NEW MEXICO
AERIAL PHOTO



DEVON ENERGY PRODUCTION COMPANY, L.P.
TODD 36 STATE 715H
LOCATED 180 FT. FROM THE SOUTH LINE
AND 425 FT. FROM THE WEST LINE OF
SECTION 36, TOWNSHIP 23 SOUTH,
RANGE 31 EAST, N.M.P.M.
EDDY COUNTY, STATE OF NEW MEXICO



HORIZON ROW LLC

DEVON ENERGY PRODUCTION CO., L.P.

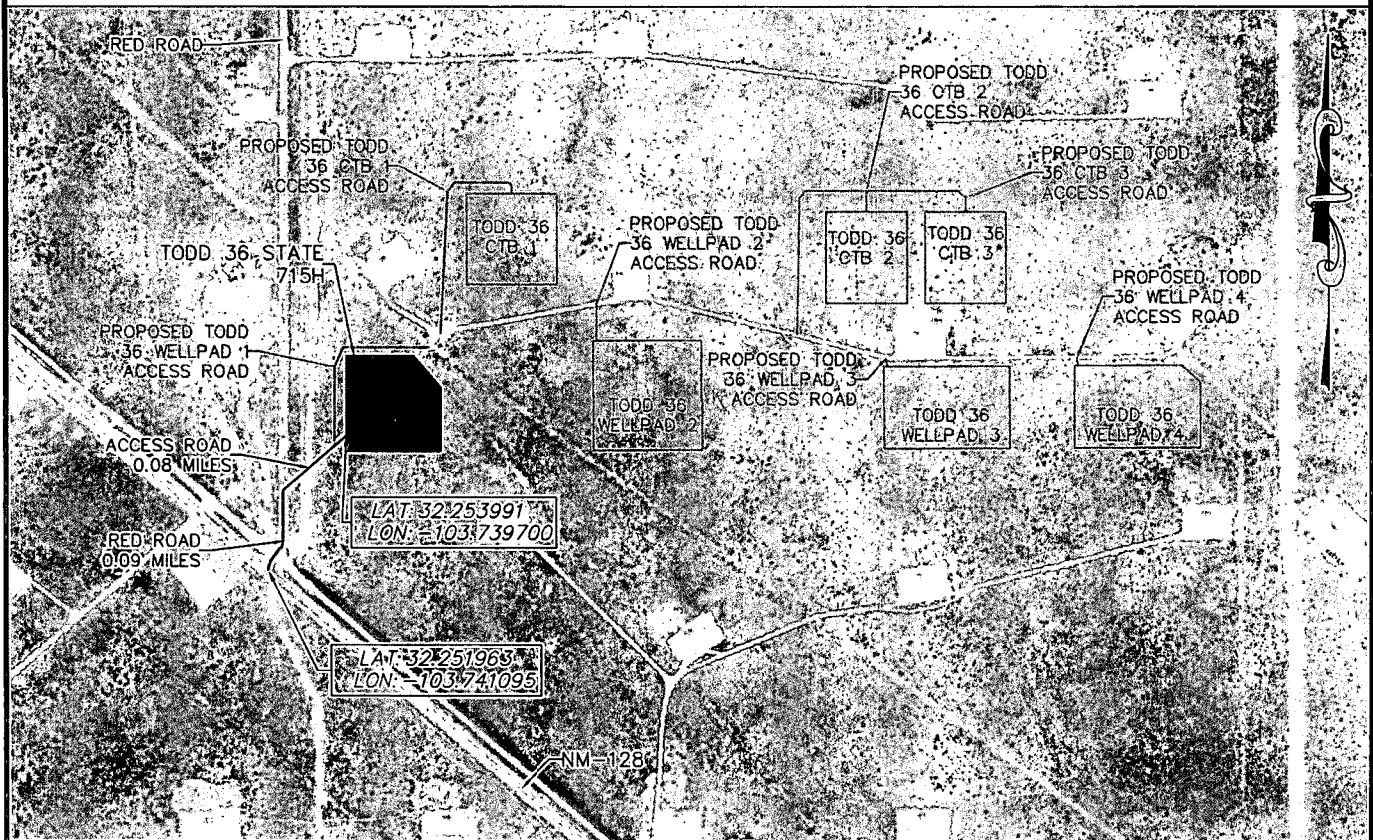
Drawn by:
CHRIS MAAS

Date: 03/18/2019
Rev. Date: 03/20/2019

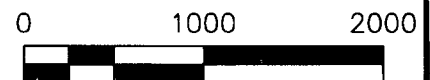
Drawn for:



SECTION 36, TOWNSHIP 23 SOUTH, RANGE 31 EAST, N.M.P.M.
 EDDY COUNTY, STATE OF NEW MEXICO
 AERIAL ACCESS ROUTE MAP



DEVON ENERGY PRODUCTION COMPANY, L.P.
 TODD 36 STATE 715H
 LOCATED 180 FT. FROM THE SOUTH LINE
 AND 425 FT. FROM THE WEST LINE OF
 SECTION 36, TOWNSHIP 23 SOUTH,
 RANGE 31 EAST, N.M.P.M.
 EDDY COUNTY, STATE OF NEW MEXICO



HORIZON ROW LLC

DEVON ENERGY PRODUCTION CO., L.P.

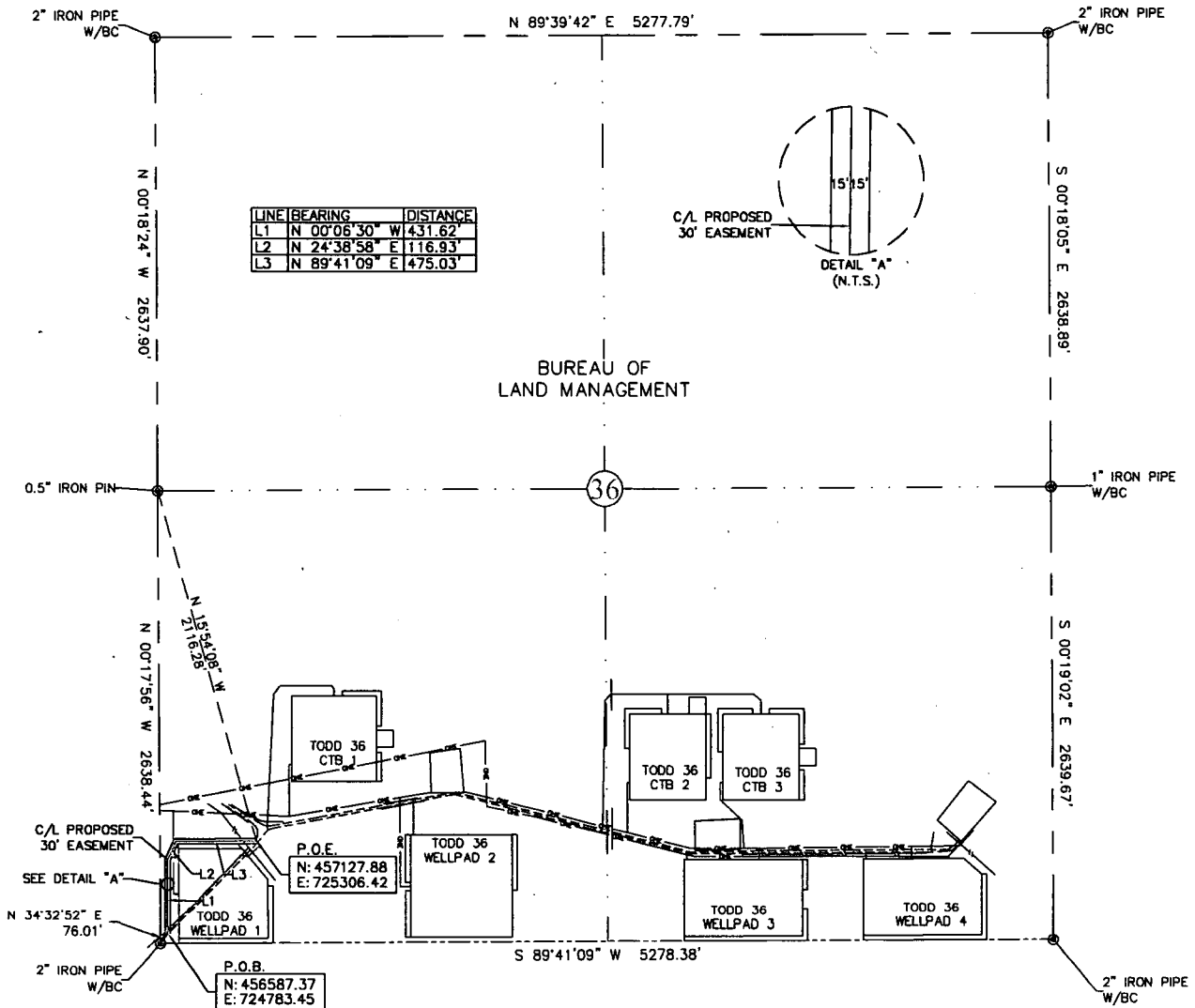
Drawn by:
 CHRIS MAAS

Date: 03/18/2019

Drawn for:

devon

EXHIBIT "A"
ACCESS ROAD PLAT
SECTION 36, T23S-R31E, N.M.P.M.
EDDY COUNTY, NEW MEXICO



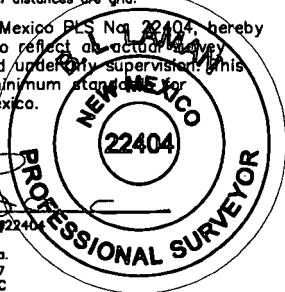
30' EASEMENT AREA = 0.705 ACRE(S)
1023.58 FEET OR 62.04 RODS

SEE THE ATTACHED LEGAL DESCRIPTION

Note: All bearings recited herein are based on the New Mexico State Plane Coordinate System, NAD 83, New Mexico East Zone 3001, US Survey Feet, all distances are grid.

I, B.L. Laman, New Mexico PLS No. 22404, hereby certify this survey to reflect an actual survey made on the ground under my supervision. This survey meets the minimum standards for surveying in New Mexico.

B.L. Laman PLS #22404
Date Signed: 09-09-2018
P.O. Box 548, Dry Creek, La.
(903) 388-3045 70637
Employee of Horizonrow, LLC



HORIZON ROW LLC

Drawn for:

devon

Drawn by:
CHRIS MAAS

Date: 07/04/2018

DEVON ENERGY PRODUCTION COMPANY, L.P.

TODD 36
WELLPAD 1 ACCESS ROAD

PROPOSED 30' EASEMENT
ON THE PROPERTY OF
BUREAU OF LAND MANAGEMENT
SECTION 36, T23S-R31E, N.M.P.M.

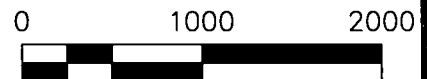
LINE NUMBER:

WBS NUMBER:

SCALE:
1" = 1000'

REVISIONS:

SHEET:



0+00.0 P.O.B./EXISTING ACCESS ROAD
0+15.8 EDGE OF ROAD
0+19.7 EXISTING FLOW LINE
5+13.0 TODD 36 WELLPAD 1 ELECTRIC LINE
9+46.8 EXISTING PIPELINE
10+11.8 EDGE OF ROAD
10+23.6 P.O.E./EXISTING ACCESS ROAD