

Submit 1 Copy To Appropriate District Office  
District I - (575) 393-6161  
1625 N. French Dr., Hobbs, NM 88240  
District II - (575) 748-1283  
811 S. First St., Artesia, NM 88210  
District III - (505) 334-6178  
1000 Rio Brazos Rd., Aztec, NM 87410  
District IV - (505) 476-3460  
1220 S. St. Francis Dr., Santa Fe, NM 87505

State of New Mexico  
Energy, Minerals and Natural Resources

OIL CONSERVATION DIVISION  
1220 South St. Francis Dr.  
Santa Fe, NM 87505

Form C-103  
Revised July 18, 2013

SUNDRY NOTICES AND REPORTS ON WELLS (DO NOT USE THIS FORM FOR PROPOSALS TO DRILL OR TO DEEPEN OR PLUG BACK OR IN DIFFERENT RESERVOIR. USE "APPLICATION FOR PERMIT" (FORM C-101) FOR SUCH PROPOSALS.)		WELL API NO. 30-015-45690
1. Type of Well: Oil Well <input type="checkbox"/> Gas Well <input checked="" type="checkbox"/> Other		5. Indicate Type of Lease STATE <input type="checkbox"/> FEE <input checked="" type="checkbox"/>
2. Name of Operator WPX ENERGY PERMIAN, LLC		6. State Oil & Gas Lease No.
3. Address of Operator 3500 ONE WILLIAMS CENTER, MD: 35, TULSA, OK 74172		7. Lease Name or Unit Agreement Name CALMATIAN 3 2 23 27 FEE
4. Well Location Unit Letter L : 2336 feet from the SOUTH line and 1194 feet from the WEST line Section 3 Township 23S Range 27E NMPM County EDDY		8. Well Number 411H
11. Elevation (Show whether DR, RKB, RT, GR, etc.) 3,138 RKB		9. OGRID Number 246289
		10. Pool name or Wildcat PURPLE SAGE; WOLFCAMP (GAS)

12. Check Appropriate Box to Indicate Nature of Notice, Report or Other Data

NOTICE OF INTENTION TO:

PERFORM REMEDIAL WORK ☐ PLUG AND ABANDON ☐  
TEMPORARILY ABANDON ☐ CHANGE PLANS ☐  
PULL OR ALTER CASING ☐ MULTIPLE COMPL ☐  
DOWNHOLE COMMINGLE ☐  
CLOSED-LOOP SYSTEM ☐  
OTHER: ☐

SUBSEQUENT REPORT OF:

REMEDIAL WORK ☐ ALTERING CASING ☐  
COMMENCE DRILLING OPNS. ☐ P AND A ☐  
CASING/CEMENT JOB ☐  
OTHER: SPUD & SURFACE CSG/CMT JOB ☒

13. Describe proposed or completed operations. (Clearly state all pertinent details, and give pertinent dates, including estimated date of starting any proposed work). SEE RULE 19.15.7.14 NMAC. For Multiple Completions: Attach wellbore diagram of proposed completion or recompletion.

Please be advised that the above mentioned well was Spud on 03/13/2019 and the Surface Casing/Cement Job was performed as follows:

Date of Job: 03/14/2019  
Hole Size: 17 1/2" Pipe Size: 13 3/8"  
Weight: 54.5# Grade: J-55  
Sacks: 460 sx of 14.8 ppg class G Tail  
Centralizers Used: 5  
Depth of Hole: 543'  
Float Shoe Set @ 414'  
Top of Cement @ SURFACE  
Casing Tested for 30 minutes to 1500 psi

Spud Date:

03/13/2019

Rig Release Date:

I hereby certify that the information above is true and complete to the best of my knowledge and belief.

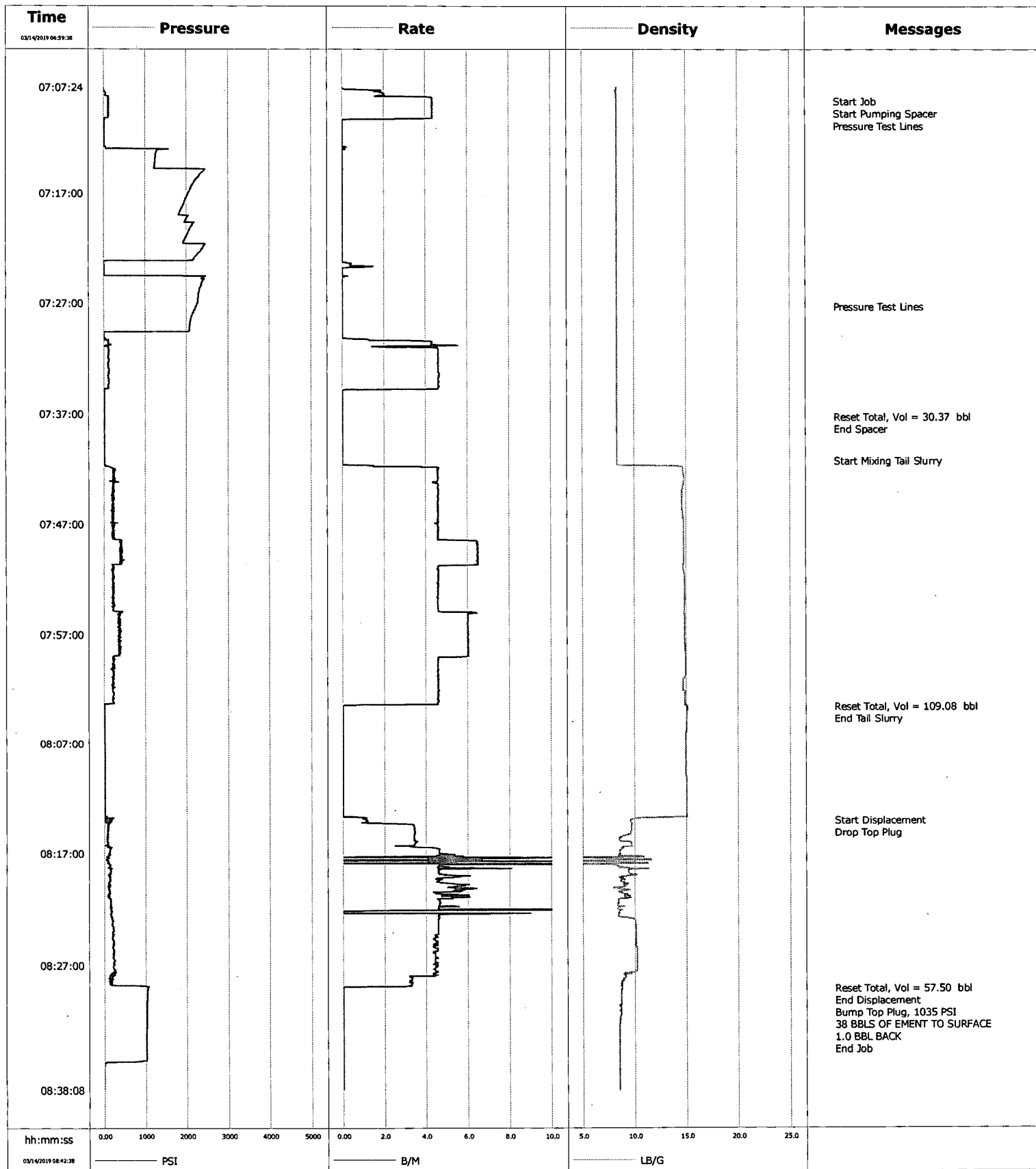
SIGNATURE Lorri Kline TITLE REGULATORY TECH II DATE 03/14/2019  
Digitally signed by Lorri Kline  
DN: cn=Lorri Kline, o, ou,  
email=LORRI.KLINE@WPXENERGY.COM, c=US  
Date: 2019.03.18 12:03:13 -0500

Type or print name LORRI KLINE E-mail address: lorri.kline@wpxenergy.com PHONE: 539-573-3518

For State Use Only

APPROVED BY: Rusty Kline TITLE Business Development DATE 3-19-2019  
Conditions of Approval (if any):

<b>Well</b>	DALMATIAN 3-2-23-27 FEE 411H	<b>Client</b>	WPX ENERGY PRODUCTION LLC
<b>Field</b>	PHANTOM	<b>SIR No.</b>	E660-00319
<b>Engineer</b>	HECTOR COLON	<b>Job Type</b>	13 3/8 SURFACE
<b>Country</b>	United States	<b>Job Date</b>	3/14/19



Customer WPX ENERGY PRODUCTION LLC				Job Number E660-00319	
Well DALMATIAN 3-2-23-27 FEE 411H 411H		Location (legal) HOBBS		Schlumberger Location	
Field PHANTOM		Formation Name/Type Limestone		Deviation 0 deg	
County EDDY		State/Province New Mexico		Well MD 430.0 ft	
Well Master 0631806773		API/UWI 30-015-45690		Well TVD 430.0 ft	
Rig Name H&P 265		Drilled For Oil and Gas		Service Via Land	
Offshore Zone		Well Class New		Well Type Development	
Drilling Fluid Type Spud Mud		Max. Density 8.40 lb/gal		Plastic Viscosity cP	
Service Line Cementing		Job Type 13 3/8 SURFACE			
Max. Allowed Tub. Press psi		Max. Allowed Ann. Press psi		WH Connection Single Cement head	
Service Instructions					
Casing/Tubing Secured <input checked="" type="checkbox"/>		1 Hole Vol. Circulated prior to Cement <input checked="" type="checkbox"/>			
Lift Pressure 195 psi		Pipe Rotated <input type="checkbox"/>		Pipe Redproccated <input type="checkbox"/>	
No. Centralizers		Top Plugs 1		Bottom Plugs	
Cement Head Type		Stage Tool Type		Tool Depth ft	
Job Scheduled For Mar/14/2019		Arrived on Location Mar/14/2019		Leave Location Mar/14/2019	
Collar Type Float		Collar Depth 369.9 ft		Sqz. Total Vol. bbl	
Casing Tools		Squeeze Job			
Shoe Type Float		Shoe Depth 414.0 ft		Squeeze Type	
Stage Tool Depth ft		Tail Pipe Size in		Tail Pipe Depth ft	
Treat Down Casing		Displacement 57.5 bbl		Packer Type	
Tubing Vol. bbl		Casing Vol. 64.5 bbl		Annular Vol. bbl	
Openhole Vol. bbl		Packer Depth ft			
Top, ft		Bottom, ft		shot/ft	
ft		ft		No. of Shots	
ft		ft		Total Interval ft	
Diameter in					
Top, ft		Bottom, ft		shot/ft	
ft		ft		No. of Shots	
ft		ft		Total Interval ft	
Diameter in					
Top, ft		Bottom, ft		shot/ft	
ft		ft		No. of Shots	
ft		ft		Total Interval ft	
Diameter in					
Top, ft		Bottom, ft		shot/ft	
ft		ft		No. of Shots	
ft		ft		Total Interval ft	
Diameter in					
Top, ft		Bottom, ft		shot/ft	
ft		ft		No. of Shots	
ft		ft		Total Interval ft	
Diameter in					
Top, ft		Bottom, ft		shot/ft	
ft		ft		No. of Shots	
ft		ft		Total Interval ft	
Diameter in					
Top, ft		Bottom, ft		shot/ft	
ft		ft		No. of Shots	
ft		ft		Total Interval ft	
Diameter in					
Top, ft		Bottom, ft		shot/ft	
ft		ft		No. of Shots	
ft		ft		Total Interval ft	
Diameter in					
Top, ft		Bottom, ft		shot/ft	
ft		ft		No. of Shots	
ft		ft		Total Interval ft	
Diameter in					
Top, ft		Bottom, ft		shot/ft	
ft		ft		No. of Shots	
ft		ft		Total Interval ft	
Diameter in					
Top, ft		Bottom, ft		shot/ft	
ft		ft		No. of Shots	
ft		ft		Total Interval ft	
Diameter in					
Top, ft		Bottom, ft		shot/ft	
ft		ft		No. of Shots	
ft		ft		Total Interval ft	
Diameter in					
Top, ft		Bottom, ft		shot/ft	
ft		ft		No. of Shots	
ft		ft		Total Interval ft	
Diameter in					
Top, ft		Bottom, ft		shot/ft	
ft		ft		No. of Shots	
ft		ft		Total Interval ft	
Diameter in					
Top, ft		Bottom, ft		shot/ft	
ft		ft		No. of Shots	
ft		ft		Total Interval ft	
Diameter in					
Top, ft		Bottom, ft		shot/ft	
ft		ft		No. of Shots	
ft		ft		Total Interval ft	
Diameter in					
Top, ft		Bottom, ft		shot/ft	
ft		ft		No. of Shots	
ft		ft		Total Interval ft	
Diameter in					
Top, ft		Bottom, ft		shot/ft	
ft		ft		No. of Shots	
ft		ft		Total Interval ft	
Diameter in					
Top, ft		Bottom, ft		shot/ft	
ft		ft		No. of Shots	
ft		ft		Total Interval ft	
Diameter in					
Top, ft		Bottom, ft		shot/ft	
ft		ft		No. of Shots	
ft		ft		Total Interval ft	
Diameter in					
Top, ft		Bottom, ft		shot/ft	
ft		ft		No. of Shots	
ft		ft		Total Interval ft	
Diameter in					
Top, ft		Bottom, ft		shot/ft	
ft		ft		No. of Shots	
ft		ft		Total Interval ft	
Diameter in					
Top, ft		Bottom, ft		shot/ft	
ft		ft		No. of Shots	
ft		ft		Total Interval ft	
Diameter in					
Top, ft		Bottom, ft		shot/ft	
ft		ft		No. of Shots	
ft		ft		Total Interval ft	
Diameter in					
Top, ft		Bottom, ft		shot/ft	
ft		ft		No. of Shots	
ft		ft		Total Interval ft	
Diameter in					
Top, ft		Bottom, ft		shot/ft	
ft		ft		No. of Shots	
ft		ft		Total Interval ft	
Diameter in					
Top, ft		Bottom, ft		shot/ft	
ft		ft		No. of Shots	
ft		ft		Total Interval ft	
Diameter in					
Top, ft		Bottom, ft		shot/ft	
ft		ft		No. of Shots	
ft		ft		Total Interval ft	
Diameter in					
Top, ft		Bottom, ft		shot/ft	
ft		ft		No. of Shots	
ft		ft		Total Interval ft	
Diameter in					
Top, ft		Bottom, ft		shot/ft	
ft		ft		No. of Shots	
ft		ft		Total Interval ft	
Diameter in					
Top, ft		Bottom, ft		shot/ft	
ft		ft		No. of Shots	
ft		ft		Total Interval ft	
Diameter in					
Top, ft		Bottom, ft		shot/ft	
ft		ft		No. of Shots	
ft		ft		Total Interval ft	
Diameter in					
Top, ft		Bottom, ft		shot/ft	
ft		ft		No. of Shots	
ft		ft		Total Interval ft	
Diameter in					
Top, ft		Bottom, ft		shot/ft	
ft		ft		No. of Shots	
ft		ft		Total Interval ft	
Diameter in					
Top, ft		Bottom, ft		shot/ft	
ft		ft		No. of Shots	
ft		ft		Total Interval ft	
Diameter in					
Top, ft		Bottom, ft		shot/ft	
ft		ft		No. of Shots	
ft		ft		Total Interval ft	
Diameter in					
Top, ft		Bottom, ft		shot/ft	
ft		ft		No. of Shots	
ft		ft		Total Interval ft	
Diameter in					
Top, ft		Bottom, ft		shot/ft	
ft		ft		No. of Shots	
ft		ft		Total Interval ft	
Diameter in					
Top, ft		Bottom, ft		shot/ft	
ft		ft		No. of Shots	
ft		ft		Total Interval ft	
Diameter in					
Top, ft		Bottom, ft		shot/ft	
ft		ft		No. of Shots	
ft		ft		Total Interval ft	
Diameter in					
Top, ft		Bottom, ft		shot/ft	
ft		ft		No. of Shots	
ft		ft		Total Interval ft	
Diameter in					
Top, ft		Bottom, ft		shot/ft	
ft		ft		No. of Shots	
ft		ft		Total Interval ft	
Diameter in					
Top, ft		Bottom, ft		shot/ft	
ft		ft		No. of Shots	
ft		ft		Total Interval ft	
Diameter in					
Top, ft		Bottom, ft		shot/ft	
ft		ft		No. of Shots	
ft		ft		Total Interval ft	
Diameter in					
Top, ft		Bottom, ft		shot/ft	
ft		ft		No. of Shots	
ft		ft		Total Interval ft	
Diameter in					
Top, ft		Bottom, ft		shot/ft	
ft		ft		No. of Shots	
ft		ft		Total Interval ft	
Diameter in					
Top, ft		Bottom, ft		shot/ft	
ft		ft		No. of Shots	
ft		ft		Total Interval ft	
Diameter in					
Top, ft		Bottom, ft		shot/ft	
ft		ft		No. of Shots	
ft		ft		Total Interval ft	
Diameter in					
Top, ft		Bottom, ft		shot/ft	
ft		ft		No. of Shots	
ft		ft		Total Interval ft	
Diameter in					
Top, ft		Bottom, ft		shot/ft	
ft		ft		No. of Shots	
ft		ft		Total Interval ft	
Diameter in					
Top, ft		Bottom, ft		shot/ft	
ft		ft		No. of Shots	
ft		ft		Total Interval ft	
Diameter in					
Top, ft		Bottom, ft		shot/ft	
ft		ft		No. of Shots	
ft		ft		Total Interval ft	
Diameter in					
Top, ft		Bottom, ft		shot/ft	
ft		ft		No. of Shots	
ft		ft		Total Interval ft	
Diameter in					
Top, ft		Bottom, ft		shot/ft	
ft		ft		No. of Shots	
ft		ft		Total Interval ft	
Diameter in					
Top, ft		Bottom, ft		shot/ft	
ft		ft		No. of Shots	
ft		ft		Total Interval ft	
Diameter in					
Top, ft		Bottom, ft		shot/ft	
ft		ft		No. of Shots	
ft		ft		Total Interval ft	
Diameter in					
Top, ft		Bottom, ft		shot/ft	
ft		ft		No. of Shots	
ft		ft		Total Interval ft	
Diameter in					
Top, ft		Bottom, ft		shot/ft	
ft		ft		No. of Shots	
ft		ft		Total Interval ft	
Diameter in					
Top, ft		Bottom, ft		shot/ft	
ft		ft		No. of Shots	
ft		ft		Total Interval ft	
Diameter in					
Top, ft		Bottom, ft		shot/ft	
ft		ft		No. of Shots	
ft		ft		Total Interval ft	
Diameter in					
Top, ft		Bottom, ft		shot/ft	
ft		ft		No. of Shots	
ft		ft		Total Interval ft	
Diameter in					
Top, ft		Bottom, ft		shot/ft	
ft		ft		No. of Shots	
ft		ft		Total Interval ft	
Diameter in					
Top, ft		Bottom, ft		shot/ft	
ft		ft		No. of Shots	
ft		ft		Total Interval ft	
Diameter in					
Top, ft		Bottom, ft		shot/ft	
ft		ft		No. of Shots	
ft		ft		Total Interval ft	
Diameter in					
Top, ft		Bottom, ft		shot/ft	
ft		ft		No. of Shots	
ft		ft		Total Interval ft	
Diameter in					
Top, ft		Bottom, ft		shot/ft	
ft		ft		No. of Shots	
ft		ft		Total Interval ft	
Diameter in					
Top, ft		Bottom, ft		shot/ft	
ft		ft		No. of Shots	
ft		ft		Total Interval ft	
Diameter in					
Top, ft		Bottom, ft		shot/ft	
ft		ft		No. of Shots	
ft		ft		Total Interval ft	
Diameter in					
Top, ft		Bottom, ft			

Well			Field	Job Start	Customer	Job Number
DALMATIAN 3-2-23-27 FEE 411H 411H			PHANTOM	Mar/14/2019	WPX ENERGY PRODUCTION LLC	E660-00319
Date	Time 24-hr clock	Treating Pressure PSI	Flow Rate B/M	Density LB/G	Volume BBL	Message
03/14/2019	08:13:55	23	1.1	9.68	0.2	Start Displacement
03/14/2019	08:13:58	175	1.1	9.62	0.3	Drop Top Plug
03/14/2019	08:18:40	165	4.6	9.40	18.4	
03/14/2019	08:23:40	219	4.6	10.09	42.7	
03/14/2019	08:28:40	138	3.3	8.68	64.2	
03/14/2019	08:29:02	1050	0.0	8.76	65.0	Reset Total, Vol = 57.50 bbl
03/14/2019	08:29:13	1041	0.0	8.72	0.0	End Displacement
03/14/2019	08:29:22	1037	0.0	8.71	0.0	Bump Top Plug, 1035 PSI
03/14/2019	08:29:25	1036	0.0	8.69	0.0	38 BBLs OF EMENT TO SURFACE

### Post Job Summary

Average Pump Rates, bbl/min					Volume of Fluid Injected, bbl			
Slurry 5.0	N2	Mud	Maximum Rate 6.6	Total Slurry 109.0	Mud	Spacer 30.0	N2	
Treating Pressure Summary, psi					Breakdown Fluid			
Maximum 2345	Final 0	Average 275	Bump Plug to 1035	Breakdown 0	Type FreshWater	Volume bbl	Density 8.34 lb/gal	
Avg. N2 Percent %	Designed Slurry Volume 109.0 bbl	Displacement 57.5 bbl	Mix Water Temp 66 degF	Cement Circulated to Surface? <input checked="" type="checkbox"/>	Volume bbl	To ft	Job Completed <input checked="" type="checkbox"/>	
Customer or Authorized Representative BO BRANTON			Schlumberger Supervisor HECTOR COLON		Circulation Lost <input type="checkbox"/>			