

UNITED STATES  
DEPARTMENT OF THE INTERIOR  
BUREAU OF LAND MANAGEMENT

OCD Artesia

FORM APPROVED  
OMB NO. 1004-0137  
Expires: January 31, 2018**SUNDRY NOTICES AND REPORTS ON WELLS**  
*Do not use this form for proposals to drill or to re-enter an abandoned well. Use form 3160-3 (APD) for such proposals.*5. Lease Serial No.  
NMNM100558

6. If Indian, Allottee or Tribe Name

7. If Unit or CA/Agreement, Name and/or No.

**SUBMIT IN TRIPLICATE - Other instructions on page 2**

1. Type of Well

☐ Oil Well ☐ Gas Well ☒ Other: UNKNOWN OTH8. Well Name and No.  
TUCKER DRAW 9-4 FED COM 2H2. Name of Operator  
RKI EXPLORATION AND PRODUCTION

Contact: JESSICA DEMARCE

Email: Jessica.demarce@wpenergy.com

9. API Well No.  
30-015-444783a. Address  
3500 ONE WILLIAMS CENTER MD 35  
TULSA, OK 741723b. Phone No. (include area code)  
Ph: 539-573-352110. Field and Pool or Exploratory Area  
PURPLE SAGE; WOLFCAMP (GAS)

4. Location of Well (Footage, Sec., T., R., M., or Survey Description)

Sec 16 T26S R30E 250FNL 1438FEL

11. County or Parish, State

EDDY COUNTY, NM

**12. CHECK THE APPROPRIATE BOX(ES) TO INDICATE NATURE OF NOTICE, REPORT, OR OTHER DATA**

## TYPE OF SUBMISSION

## TYPE OF ACTION

☐ Notice of Intent☒ Subsequent Report☐ Final Abandonment Notice☐ Acidize☐ Alter Casing☐ Casing Repair☐ Change Plans☐ Convert to Injection☐ Deepen☐ Hydraulic Fracturing☐ New Construction☐ Plug and Abandon☐ Plug Back☐ Production (Start/Resume)☐ Reclamation☐ Recomplete☐ Temporarily Abandon☒ Water Disposal☐ Water Shut-Off☐ Well Integrity☐ Other

13. Describe Proposed or Completed Operation: Clearly state all pertinent details, including estimated starting date of any proposed work and approximate duration thereof. If the proposal is to deepen directionally or recomple horizontally, give subsurface locations and measured and true vertical depths of all pertinent markers and zones. Attach the Bond under which the work will be performed or provide the Bond No. on file with BLM/BIA. Required subsequent reports must be filed within 30 days following completion of the involved operations. If the operation results in a multiple completion or recomple in a new interval, a Form 3160-4 must be filed once testing has been completed. Final Abandonment Notices must be filed only after all requirements, including reclamation, have been completed and the operator has determined that the site is ready for final inspection.

RKI EXPLORATION and PRODUCTION LLC Requests to dispose of produced water for the above mentioned well in the locations below:

Producing Formation: Wolfcamp

Amount of water production per day: 2700 bbls max/1650 bbls avg

Onsite storage: (4) 500 bbl water tanks

Transport method and company: Pipeline ? Stateline Water, LLC

Water facility operator: RKI EXPLORATION &amp; PRODUCTION LLC

Name of facility/SWD: STATELINE SWD 2-1

Location of facility/SWD: Sec 2 Blk 56 T1, 417? North, 467? West

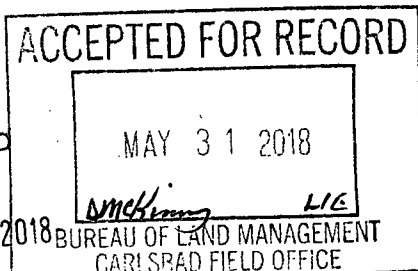
Permit Number for facility/SWD: W14# 14063

API: 42-301-31961

GC 5-31-18  
Accepted for record - NMOCD

RECEIVED

MAY 31 2018



14. I hereby certify that the foregoing is true and correct.

Electronic Submission #421727 verified by SYSTEM WELLS INFORMATION SYSTEM

For RKI EXPLORATION AND PRODUCTION, sent to the Carlsbad

Committed to AFMSS for processing by DEBORAH MCKINNEY on 05/30/2018 ()

Name (Printed/Typed) JESSICA DEMARCE

Title PERMIT TECH II

Signature (Electronic Submission)

Date 05/29/2018

**THIS SPACE FOR FEDERAL OR STATE OFFICE USE**

Approved By

Title

Date

Conditions of approval, if any, are attached. Approval of this notice does not warrant or certify that the applicant holds legal or equitable title to those rights in the subject lease which would entitle the applicant to conduct operations thereon.

Office

Title 18 U.S.C. Section 1001 and Title 43 U.S.C. Section 1212, make it a crime for any person knowingly and willfully to make to any department or agency of the United States any false, fictitious or fraudulent statements or representations as to any matter within its jurisdiction.

(Instructions on page 2)

**\*\* OPERATOR-SUBMITTED \*\* OPERATOR-SUBMITTED \*\* OPERATOR-SUBMITTED \*\***

**Additional data for EC transaction #421727 that would not fit on the form**

**32. Additional remarks, continued**

UIC: 000107340

Other locations if primary disposal is down

--SEE NEXT PAGE(S)--

operator: RKI EXPLORATION & PRODUCTION LLC

Name of facility/SWD: DAMSITE UNIT 1

Location of facility/SWD: Sec 9 Blk 56 T1, 1320? North, 1320? North

Permit Number for facility/SWD: W14# 13129

API: 42-301-30047

UIC: 000102256

Water facility operator: RKI EXPLORATION & PRODUCTION LLC

Name of facility/SWD: RED BLUFF DEEP 1D

Location of facility/SWD: Sec 2 Blk 56 T1, 467? North, 467? East

Permit Number for facility/SWD: W14# 13995

API: 42-301-30225

UIC: 000102257

Water facility operator: RKI EXPLORATION & PRODUCTION LLC

Name of facility/SWD: RED BLUFF 8-1

Location of facility/SWD: Sec 2 Blk 56 T1, 467? North, 467? East

Permit Number for facility/SWD: W14# 13995

API: 42-301-30294

UIC: 000100957

Water facility operator: RKI EXPLORATION & PRODUCTION LLC

Name of facility/SWD: RED BLUFF 8-2D

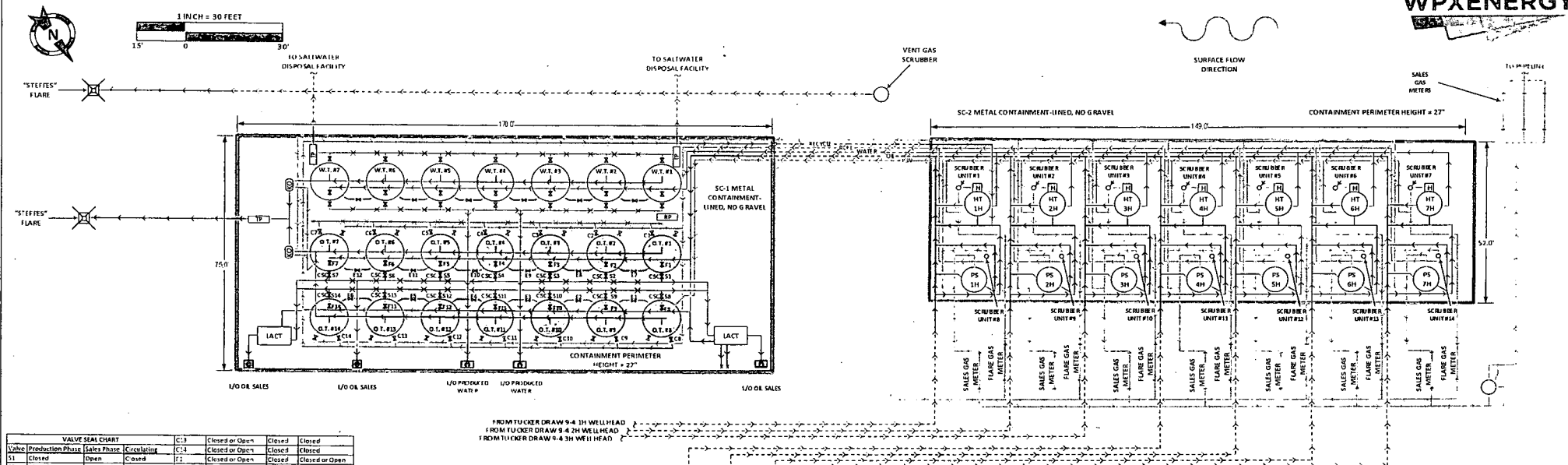
Location of facility/SWD: Sec 2 Blk 56 T1, 467? North, 467? East

Permit Number for facility/SWD: W14# 13995

API: 42-301-30333

UIC: 000101482

A Current Site Facility Diagram is Attached

[illegible]

*NOTE: Some measurements on drawing are estimates and not field verified.*

### FACILITY SITE DIAGRAM

RKI Exploration & Production, LLC – Permian Basin  
TUCKER DRAW 9-4 (1H, 2H, 3H, 4H, 5H, 6H, 7H)  
SEC. 16, T26S, R30E  
API #: 30-015-(44477, 44478, 44486,  
44487, 44488, 44479, 44480)  
Latitude: 32.048976° Longitude: -103.878641°  
EDDY COUNTY, NM

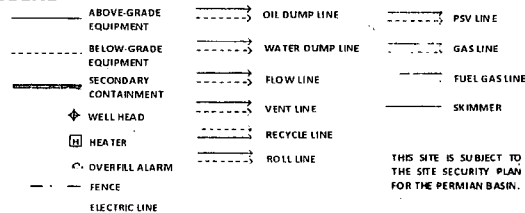
DRAWN BY: Kevin Fox

DATE: 4.3.2018



**HRL  
COMPLIANCE  
SOLUTIONS**

## LEGEND



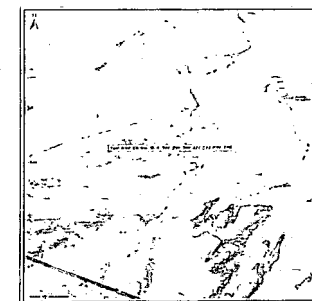
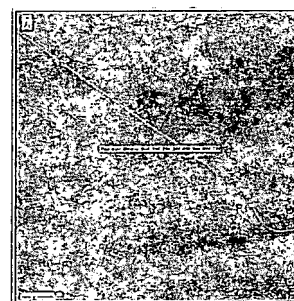
PLAN LOCATED AT: WPX ENERGY PRODUCTION, INC. 5315 Buena Vista Carlsbad  
NM. 88220

Fuel Gas Scrubber #1: 0.42 Bbl, 1.0' diameter  
 Fuel Gas Scrubber #2: 0.42 Bbl, 1.0' diameter  
 Fuel Gas Scrubber #3: 0.42 Bbl, 1.0' diameter  
 Fuel Gas Scrubber #4: 0.42 Bbl, 1.0' diameter  
 Fuel Gas Scrubber #5: 0.42 Bbl, 1.0' diameter  
 Fuel Gas Scrubber #6: 0.42 Bbl, 1.0' diameter  
 Fuel Gas Scrubber #7: 0.42 Bbl, 1.0' diameter  
 Fuel Gas Scrubber #8: 0.42 Bbl, 1.0' diameter  
 Fuel Gas Scrubber #9: 0.42 Bbl, 1.0' diameter  
 Fuel Gas Scrubber #10: 0.42 Bbl, 1.0' diameter  
 Fuel Gas Scrubber #11: 0.42 Bbl, 1.0' diameter  
 Fuel Gas Scrubber #12: 0.42 Bbl, 1.0' diameter  
 Fuel Gas Scrubber #13: 0.42 Bbl, 1.0' diameter  
 Fuel Gas Scrubber #14: 0.42 Bbl, 1.0' diameter

**Sales Phase:** The tank from which sales are being made will be isolated by sealing closed the fill valve(s) (F), circulating valve (C), and the equalizer valve (E) during sales; and opening the sales valve (S). Upon completion of the sale, the sales valve will be released. Sales by truck will be by tank gauge.

**Production Phase:** Sales vales S1 through S14 sealed closed. Fill valve (F) to tank that is in production will be open. Equalizer valve (E) to tank that is in production will be open. Circulating valves (C) will be open as necessary, then released.

**ACCESS  
ROAD**



**SURFACE FLOW  
DIRECTION**