

UNITED STATES
DEPARTMENT OF THE INTERIOR
BUREAU OF LAND MANAGEMENT

OCD Artesia

FORM APPROVED
OMB NO. 1004-0137
Expires: January 31, 2018

SUNDRY NOTICES AND REPORTS ON WELLS
Do not use this form for proposals to drill or to re-enter an abandoned well. Use form 3160-3 (APD) for such proposals.

SUBMIT IN TRIPLICATE - Other instructions on page 2

5. Lease Serial No.
NMNM100558

6. If Indian, Allottee or Tribe Name

7. If Unit or CA/Agreement, Name and/or No.

8. Well Name and No.
TUCKER DRAW 9-4 FED COM 7H

9. API Well No.
30-015-44480

10. Field and Pool or Exploratory Area
PURPLE SAGE; WOLFCAMP (GAS)

11. County or Parish, State
EDDY COUNTY, NM

1. Type of Well

☐ Oil Well ☐ Gas Well ☒ Other: UNKNOWN OTH

2. Name of Operator

RKI EXPLORATION AND PRODUCTION LLC

Contact: JESSICA DEMARCE

Email: Jessica.demarce@wpenergy.com

3a. Address

3500 ONE WILLIAMS CENTER MD 35
TULSA, OK 74172

3b. Phone No. (include area code)

Ph: 539-573-3521

4. Location of Well (Footage, Sec., T., R., M., or Survey Description)

Sec 16 T26S R30E 260FNL 330FEL

12. CHECK THE APPROPRIATE BOX(ES) TO INDICATE NATURE OF NOTICE, REPORT, OR OTHER DATA

TYPE OF SUBMISSION	TYPE OF ACTION			
<input type="checkbox"/> Notice of Intent	<input type="checkbox"/> Acidize	<input type="checkbox"/> Deepen	<input type="checkbox"/> Production (Start/Resume)	<input type="checkbox"/> Water Shut-Off
<input checked="" type="checkbox"/> Subsequent Report	<input type="checkbox"/> Alter Casing	<input type="checkbox"/> Hydraulic Fracturing	<input type="checkbox"/> Reclamation	<input type="checkbox"/> Well Integrity
<input type="checkbox"/> Final Abandonment Notice	<input type="checkbox"/> Casing Repair	<input type="checkbox"/> New Construction	<input type="checkbox"/> Recomplete	<input type="checkbox"/> Other
	<input type="checkbox"/> Change Plans	<input type="checkbox"/> Plug and Abandon	<input type="checkbox"/> Temporarily Abandon	
	<input type="checkbox"/> Convert to Injection	<input type="checkbox"/> Plug Back	<input checked="" type="checkbox"/> Water Disposal	

13. Describe Proposed or Completed Operation: Clearly state all pertinent details, including estimated starting date of any proposed work and approximate duration thereof. If the proposal is to deepen directionally or recomple horizontally, give subsurface locations and measured and true vertical depths of all pertinent markers and zones. Attach the Bond under which the work will be performed or provide the Bond No. on file with BLM/BIA. Required subsequent reports must be filed within 30 days following completion of the involved operations. If the operation results in a multiple completion or recomple in a new interval, a Form 3160-4 must be filed once testing has been completed. Final Abandonment Notices must be filed only after all requirements, including reclamation, have been completed and the operator has determined that the site is ready for final inspection.

RKI EXPLORATION and PRODUCTION LLC Requests to dispose of produced water for the above mentioned well in the locations below:

Producing Formation: Wolfcamp

Amount of water production per day: 2700 bbls max/1650 bbls avg

Onsite storage: (4) 500 bbl water tanks

Transport method and company: Pipeline ? Stateline Water, LLC

Water facility operator: RKI EXPLORATION & PRODUCTION LLC

Name of facility/SWD: STATELINE SWD 2-1

Location of facility/SWD: Sec 2 Blk 56 T1, 417? North, 467? West

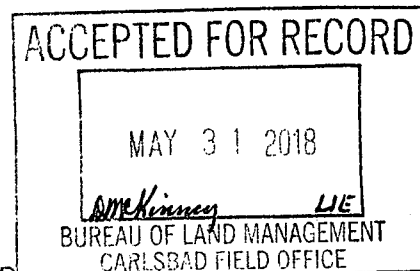
Permit Number for facility/SWD: W14# 14063

API: 42-301-31961

RECEIVED

MAY 31 2018

GC 5-31-18
Accepted for record - NMOCD



14. I hereby certify that the foregoing is true and correct.

Electronic Submission #421728 verified by the BLM Well Information System

For RKI EXPLORATION AND PRODUCTION, sent to the Carlsbad

Committed to AFMSS for processing by DEBORAH MCKINNEY on 05/30/2018 ()

Name (Printed/Typed) JESSICA DEMARCE

Title PERMIT TECH II

Signature (Electronic Submission)

Date 05/29/2018

THIS SPACE FOR FEDERAL OR STATE OFFICE USE

Approved By

Title

Date

Conditions of approval, if any, are attached. Approval of this notice does not warrant or certify that the applicant holds legal or equitable title to those rights in the subject lease which would entitle the applicant to conduct operations thereon.

Office

Title 18 U.S.C. Section 1001 and Title 43 U.S.C. Section 1212, make it a crime for any person knowingly and willfully to make to any department or agency of the United States any false, fictitious or fraudulent statements or representations as to any matter within its jurisdiction.

(Instructions on page 2)

**** OPERATOR-SUBMITTED ** OPERATOR-SUBMITTED ** OPERATOR-SUBMITTED ****

Additional data for EC transaction #421728 that would not fit on the form

32. Additional remarks, continued

UIC: 000107340

Other locations if primary disposal is down

--SEE NEXT PAGE(S)--

operator: RKI EXPLORATION & PRODUCTION LLC

Name of facility/SWD: DAMSITE UNIT 1

Location of facility/SWD: Sec 9 Blk 56 T1, 1320? North, 1320? North

Permit Number for facility/SWD: W14# 13129

API: 42-301-30047

UIC: 000102256

Water facility operator: RKI EXPLORATION & PRODUCTION LLC

Name of facility/SWD: RED BLUFF DEEP 1D

Location of facility/SWD: Sec 2 Blk 56 T1, 467? North, 467? East

Permit Number for facility/SWD: W14# 13995

API: 42-301-30225

UIC: 000102257

Water facility operator: RKI EXPLORATION & PRODUCTION LLC

Name of facility/SWD: RED BLUFF 8-1

Location of facility/SWD: Sec 2 Blk 56 T1, 467? North, 467? East

Permit Number for facility/SWD: W14# 13995

API: 42-301-30294

UIC: 000100957

Water facility operator: RKI EXPLORATION & PRODUCTION LLC

Name of facility/SWD: RED BLUFF 8-2D

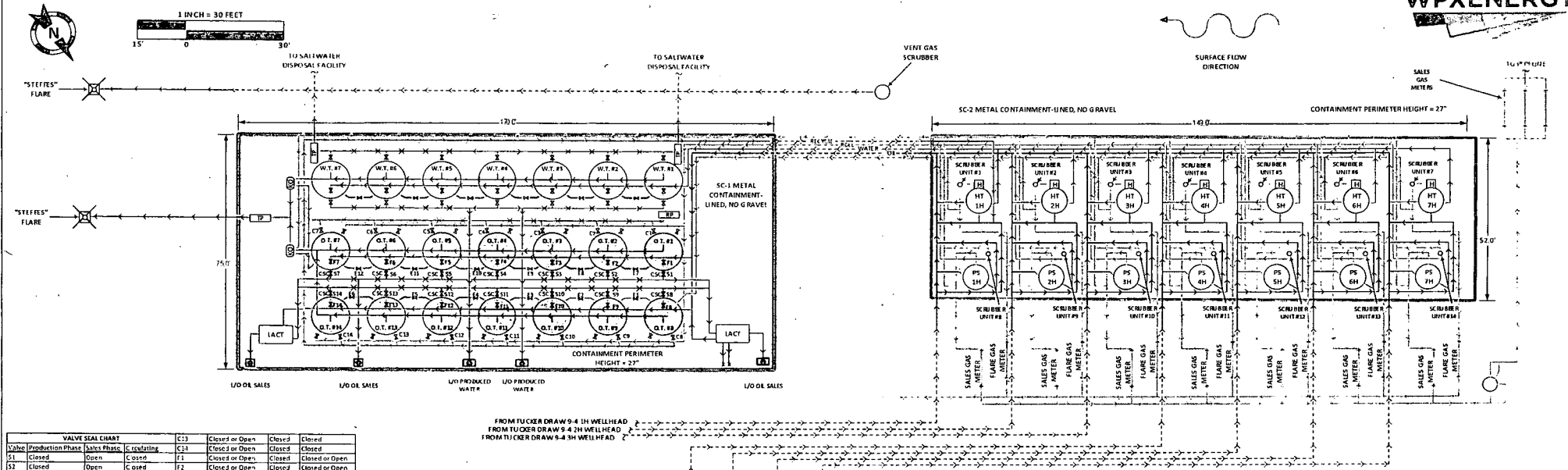
Location of facility/SWD: Sec 2 Blk 56 T1, 467? North, 467? East

Permit Number for facility/SWD: W14# 13995

API: 42-301-30333

UIC: 000101482

A Current Site Facility Diagram is Attached



Valve	Production Phase	Valve Seal Chart	Valve Seal Chart	Valve Seal Chart	Valve Seal Chart
S1	Closed	Open	Closed	C13	Closed or Open
S2	Closed	Open	Closed	F2	Closed or Open
S3	Closed	Open	Closed	F3	Closed or Open
S4	Closed	Open	Closed	F4	Closed or Open
S5	Closed	Open	Closed	F5	Closed or Open
S6	Closed	Open	Closed	F6	Closed or Open
S7	Closed	Open	Closed	F7	Closed or Open
S8	Closed	Open	Closed	F8	Closed or Open
S9	Closed	Open	Closed	F9	Closed or Open
S10	Closed	Open	Closed	F10	Closed or Open
S11	Closed	Open	Closed	F11	Closed or Open
S12	Closed	Open	Closed	F12	Closed or Open
S13	Closed	Open	Closed	F13	Closed or Open
S14	Closed	Open	Closed	F14	Closed or Open
C1	Closed or Open	Closed	Closed	E1	Closed or Open
C2	Closed or Open	Closed	Closed	E2	Closed or Open
C3	Closed or Open	Closed	Closed	E3	Closed or Open
C4	Closed or Open	Closed	Closed	E4	Closed or Open
C5	Closed or Open	Closed	Closed	E5	Closed or Open
C6	Closed or Open	Closed	Closed	E6	Closed or Open
C7	Closed or Open	Closed	Closed	E7	Closed or Open
C8	Closed or Open	Closed	Closed	E8	Closed or Open
C9	Closed or Open	Closed	Closed	E9	Closed or Open
C10	Closed or Open	Closed	Closed	E10	Closed or Open
C11	Closed or Open	Closed	Closed	E11	Closed or Open
C12	Closed or Open	Closed	Closed	E12	Closed or Open

NOTE: Some measurements on drawing are estimates and not field verified.

FACILITY SITE DIAGRAM

RKI Exploration & Production, LLC – Permian Basin
TUCKER DRAW 9-4 (1H, 2H, 3H, 4H, 5H, 6H, 7H)
SEC. 16, T26S, R30E

API # 30-015-(44477, 44478, 44486,
44487, 44488, 44479, 44480)

Latitude: 32.048976° Longitude: -103.878641°

EDDY COUNTY, NM

DRAWN BY: Kevin Fox

DATE: 4.3.2018



HRL
COMPLIANCE
SOLUTIONS

LEGEND

— ABOVE-GRADE EQUIPMENT	— OIL DUMP LINE	— PSV LINE
— BELOW-GRADE EQUIPMENT	— WATER DUMP LINE	— GAS LINE
— SECONDARY CONTAINMENT	— FLOW LINE	— FUEL GAS LINE
◆ WELL HEAD	— VENT LINE	— SKIMMER
□ HEATER	— RECYCLE LINE	
○ OVERFILL ALARM	— ROLL LINE	
— FENCE		
— ELECTRIC LINE		

THIS SITE IS SUBJECT TO THE SITE SECURITY PLAN FOR THE PERMIAN BASIN.

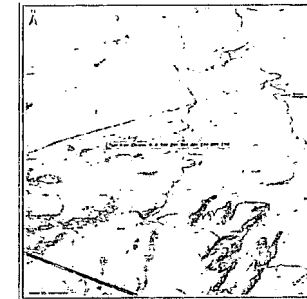
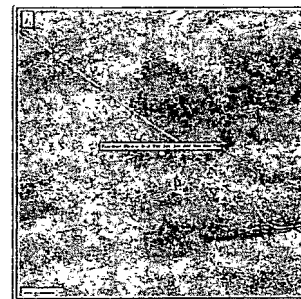
PLAN LOCATED AT: WPX ENERGY PRODUCTION, INC. 5315 Buena Vista Carlsbad NM, 88220

Fuel Gas Scrubber #1: 0.42 Bbl 1.0' diameter
Fuel Gas Scrubber #2: 0.42 Bbl 1.0' diameter
Fuel Gas Scrubber #3: 0.42 Bbl 1.0' diameter
Fuel Gas Scrubber #4: 0.42 Bbl 1.0' diameter
Fuel Gas Scrubber #5: 0.42 Bbl 1.0' diameter
Fuel Gas Scrubber #6: 0.42 Bbl 1.0' diameter
Fuel Gas Scrubber #7: 0.42 Bbl 1.0' diameter
Fuel Gas Scrubber #8: 0.42 Bbl 1.0' diameter
Fuel Gas Scrubber #9: 0.42 Bbl 1.0' diameter
Fuel Gas Scrubber #10: 0.42 Bbl 1.0' diameter
Fuel Gas Scrubber #11: 0.42 Bbl 1.0' diameter
Fuel Gas Scrubber #12: 0.42 Bbl 1.0' diameter
Fuel Gas Scrubber #13: 0.42 Bbl 1.0' diameter
Fuel Gas Scrubber #14: 0.42 Bbl 1.0' diameter

Sales Phase: The tank from which sales are being made will be isolated by sealing closed the fill valve(s) (F), circulating valve (C), and the equalizer valve (E) during sales; and opening the sales valve (S). Upon completion of the sale, the sales valve will be released. Sales by truck will be by tank gauge.

Production Phase: Sales sales S1 through S14 sealed closed. Fill valve (F) to tank that is in production will be open. Equalizer valve (E) to tank that is in production will be open. Circulating valves (C) will be open as necessary, then released.

ACCESS ROAD



SURFACE FLOW DIRECTION

BUREAU OF LAND MANAGEMENT
Carlsbad Field Office
620 East Greene Street
Carlsbad, New Mexico 88220
575-234-5972

Disposal of Produced Water From Federal Wells
Conditions of Approval

Approval of the produced water disposal methodology is subject to the following conditions of approval:

1. This agency shall be notified of any change in your method or location of disposal.
2. Compliance with all provisions of Onshore Order No. 7.
3. This agency shall be notified of any spill or discharge as required by NTL-3A.
4. This agency reserves the right to modify or rescind approval whenever it determines continued use of the approved method may adversely affect the surface or subsurface environments.
5. Any on-lease open top storage tanks shall be covered with a protective cover to prevent entry by birds and other wildlife.
6. This approval should not constitute the granting of any right-of-way or construction rights not granted by the lease instrument.
7. If water is transported via a pipeline that extends beyond the lease boundary, then you need to submit within 30 days an application for right-of-way approval to the Realty Section in this office if you have not already done so.
8. Disposal at any other site will require prior approval.
9. Subject to like approval by NMOCD

4/4/2017