

District I
1625 N. French Dr., Hobbs, NM 88240
Phone: (575) 393-6161 Fax: (575) 393-0720
District II
811 S. First St., Artesia, NM 88210
Phone: (575) 748-1283 Fax: (575) 748-9720
District III
1000 Rio Brazos Road, Aztec, NM 87410
Phone: (505) 334-6178 Fax: (505) 334-6170
District IV
1220 S. St. Francis Dr., Santa Fe, NM 87505
Phone: (505) 476-3460 Fax: (505) 476-3462

State of New Mexico
Energy, Minerals & Natural Resources Department
OIL CONSERVATION DIVISION
1220 South St. Francis Dr.
Santa Fe, NM 87505

RECEIVED

MAY 30 2019
DISTRICT II-ARTESIA O.C.D.

Form C-102
Revised August 1, 2011
Submit one copy to appropriate
District Office

☐ AMENDED REPORT

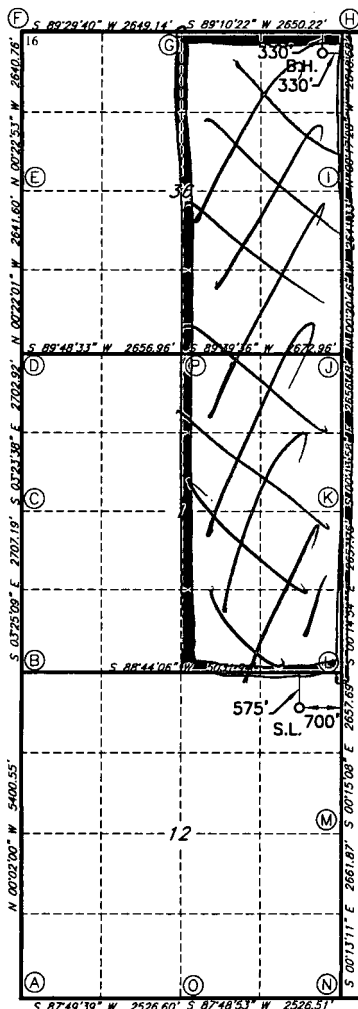
WELL LOCATION AND ACREAGE DEDICATION PLAT

¹ API Number 30-015-45536	² Pool Code 98220	³ Pool Name Purple Sage; Wolfcamp (Gas)
⁴ Property Code 322234	⁵ Property Name BUFFALO TRACE 1/36 WIPA FEDERAL COM	
⁷ OGRID NO. 14744	⁸ Operator Name MEWBOURNE OIL COMPANY	⁶ Well Number 2H
		⁹ Elevation 3038'

¹⁰ Surface Location									
UL or lot no.	Section	Township	Range	Lot Idn	Feet from the	North/South line	Feet From the	East/West line	County
A	12	26S	29E		575	NORTH	700	EAST	EDDY

¹¹ Bottom Hole Location If Different From Surface									
UL or lot no.	Section	Township	Range	Lot Idn	Feet from the	North/South line	Feet from the	East/West line	County
A	36	25S	29E		336	NORTH	364	EAST	EDDY
¹² Dedicated Acres 640		¹³ Joint or Infill		¹⁴ Consolidation Code		¹⁵ Order No.			

No allowable will be assigned to this completion until all interest have been consolidated or a non-standard unit has been approved by the division.



GEODETIC DATA
NAD 83 GRID - NM EAST

SURFACE LOCATION
N: 386802.6 - E: 665820.3
LAT: 32.0627630° N
LONG: 103.9314878° W

BOTTOM HOLE
N: 397689.4 - E: 666130.8
LAT: 32.0926866° N
LONG: 103.9303545° W

CORNER DATA
NAD 83 GRID - NM EAST

A: FOUND BRASS CAP "1940" N: 381882.4 - E: 661489.4	I: FOUND BRASS CAP "1940" N: 395364.5 - E: 666476.0
B: FOUND BRASS CAP "1940" N: 387281.8 - E: 661486.2	J: FOUND BRASS CAP "1940" N: 392705.9 - E: 666493.5
C: FOUND BRASS CAP "1940" N: 389983.6 - E: 661324.8	K: FOUND BRASS CAP "1940" N: 390050.0 - E: 666504.3
D: FOUND BRASS CAP "1940" N: 392681.2 - E: 661164.8	L: FOUND 1/2" REBAR N: 387392.8 - E: 666515.9
E: FOUND BRASS CAP "1940" N: 395334.5 - E: 661152.0	M: FOUND BRASS CAP "1940" N: 384735.7 - E: 666527.5
F: FOUND 5/8" REBAR N: 397988.6 - E: 661141.0	N: FOUND BRASS CAP "1940" N: 382074.4 - E: 666537.7
G: FOUND BRASS CAP "1940" N: 398004.2 - E: 663799.3	O: FOUND BRASS CAP "1940" N: 381978.1 - E: 664013.6
H: FOUND BRASS CAP "1940" N: 398021.4 - E: 666458.5	P: FOUND BRASS CAP "1940" N: 392690.0 - E: 663821.2

¹⁷ OPERATOR CERTIFICATION
I hereby certify that the information contained herein is true and complete to the best of my knowledge and belief, and that this organization either owns a working interest or unleased mineral interest in the land including the proposed bottom hole location or has a right to drill this well at this location pursuant to a contract with an owner of such a mineral or working interest, or to a voluntary pooling agreement or a compulsory pooling order heretofore entered by the division.

Signature: Jackie Lathan Date: 5/21/19
Printed Name: Jackie Lathan
E-mail Address: _____

¹⁸ SURVEYOR CERTIFICATION
I hereby certify that the well location shown on this plat was plotted from field notes of actual surveys made by me or under my supervision, and that the same is true and correct to the best of my belief.

4-20-2018
Date of Survey

Signature and Seal of Professional Surveyor: Robert M. Howett
19680
Certificate Number

12/13/18 SHL