

District I
1625 N. French Dr., Hobbs, NM 88240
Phone: (575) 393-6161 Fax: (575) 393-0720
District II
811 S. First St., Artesia, NM 88210
Phone: (575) 748-1283 Fax: (575) 748-9720
District III
1000 Rio Brazos Road, Aztec, NM 87410
Phone: (505) 334-6178 Fax: (505) 334-6170
District IV
1220 S. St. Francis Dr., Santa Fe, NM 87505
Phone: (505) 476-3460 Fax: (505) 476-3462

State of New Mexico
Energy, Minerals & Natural Resources Department
OIL CONSERVATION DIVISION
1220 South St. Francis Dr.
Santa Fe, NM 87505

Form C-102
Revised August 1, 2011
Submit one copy to appropriate
District Office

JUN 5 2019 AMENDED REPORT
RECEIVED

WELL LOCATION AND ACREAGE DEDICATION PLAT

¹ API Number 30-015-45148	² Pool Code 97494	³ Pool Name Cottonwood Draw; Bone Spring
⁴ Property Code 322224	⁵ Property Name COTTONBERRY 20 FEDERAL	⁶ Well Number 5H
⁷ OGRID No. 215099	⁸ Operator Name CIMAREX ENERGY CO.	⁹ Elevation 3148.9'

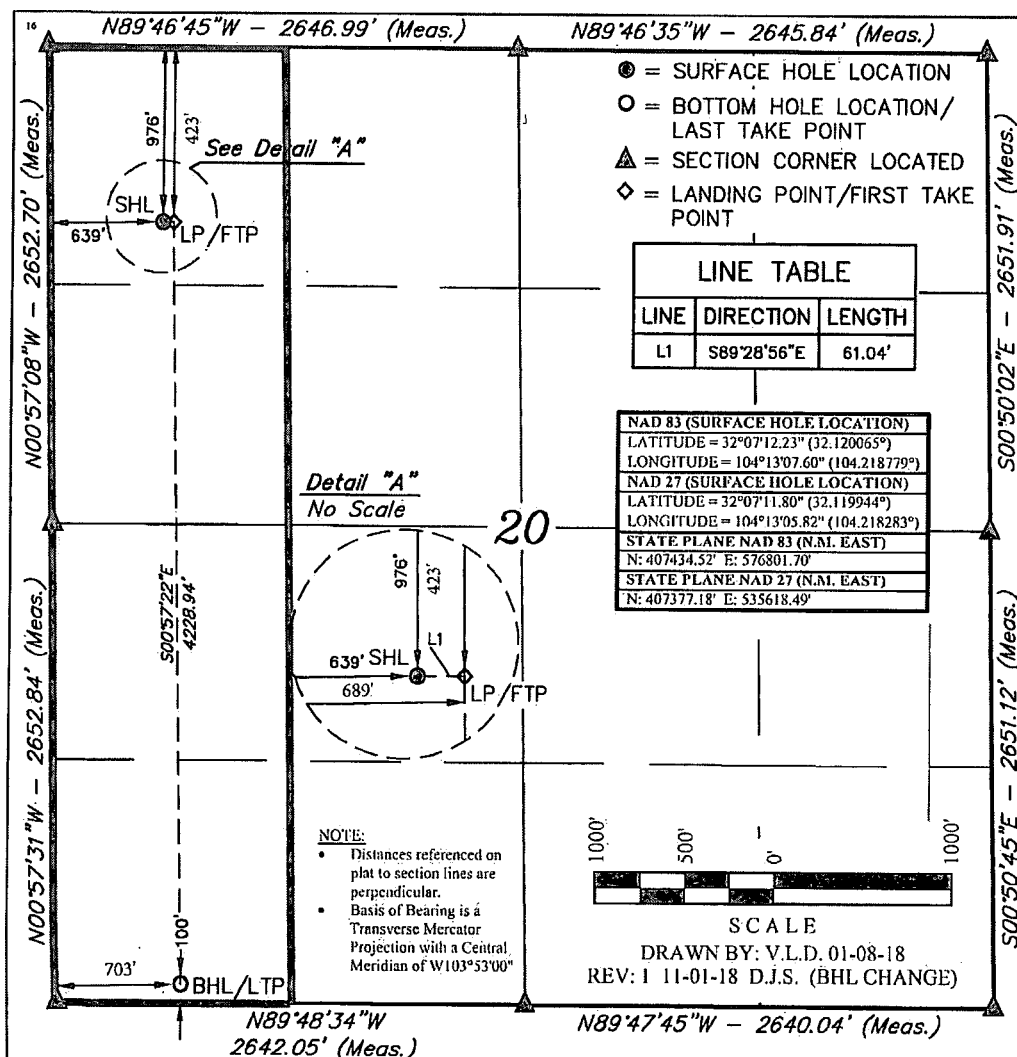
" Surface Location

UL or lot no. D	Section 20	Township 25S	Range 27E	Lot Idn	Feet from the 976	North/South line NORTH	Feet from the 639	East/West line WEST	County EDDY
--------------------	---------------	-----------------	--------------	---------	----------------------	---------------------------	----------------------	------------------------	----------------

" Bottom Hole Location If Different From Surface

UL or lot no. M	Section 20	Township 25S	Range 27E	Lot Idn	Feet from the 100	North/South line SOUTH	Feet from the 703	East/West line WEST	County EDDY
¹¹ Dedicated Acres 160	¹² Joint or Infill	¹³ Consolidation Code	¹⁴ Order No.						

No allowable will be assigned to this completion until all interests have been consolidated or a non-standard unit has been approved by the division.



" OPERATOR
CERTIFICATION

I hereby certify that the information contained herein is true and complete to the best of my knowledge and belief, and that this organization either owns a working interest or unleased mineral interest in the land including the proposed bottom hole location or has a right to drill this well at this location pursuant to a contract with an owner of such a mineral or working interest, or to a voluntary pooling agreement or a compulsory pooling order heretofore entered by the division.

Signature: *Fatima Vasquez* Date: 06/03/2019

Printed Name: Fatima Vasquez

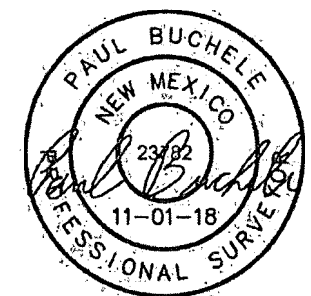
E-mail Address: fvasquez@cimarex.com

" SURVEYOR
CERTIFICATION

I hereby certify that the well location shown on this plat was plotted from field notes of actual surveys made by me or under my supervision, and that the same is true and correct to the best of my belief.

December 21, 2018

Date of Survey
Signature and Seal of Professional Surveyor:



Certificate Number: