

Office

District I - (575) 393-6161

1625 N. French Dr., Hobbs, NM 88240

District II - (575) 748-1283

811 S. First St., Artesia, NM 88210

District III - (505) 334-6178

1000 Rio Brazos Rd., Aztec, NM 87410

District IV - (505) 476-3460

1220 S. St. Francis Dr., Santa Fe, NM

87505

RECEIVED

JUN 14 2019

DISTRICT II-ARTESIA O.C.D.

Energy, Minerals and Natural Resources

OIL CONSERVATION DIVISION

1220 South St. Francis Dr.

Santa Fe, NM 87505

WELL API NO.

30-015-26961

5. Indicate Type of Lease

STATE ☒ FEE ☐

6. State Oil & Gas Lease No.

LG 9810

7. Lease Name or Unit Agreement Name

Candelilla AKD State Com

8. Well Number

2

9. OGRID Number

7377

10. Pool name or Wildcat

North Dagger Draw U/Penn

SUNDRY NOTICES AND REPORTS ON WELLS

(DO NOT USE THIS FORM FOR PROPOSALS TO DRILL OR TO DEEPEN OR PLUG BACK TO A DIFFERENT RESERVOIR. USE "APPLICATION FOR PERMIT" (FORM C-101) FOR SUCH PROPOSALS.)

1. Type of Well: Oil Well ☒ Gas Well ☐ Other

2. Name of Operator

EOG Resources, Inc.

3. Address of Operator

104 South Fourth Street, Artesia, NM 88210

4. Well Location

Unit Letter N : 660 feet from the South line and 1980 feet from the West lineSection 2 Township 20S Range 24E NMPM Eddy County

11. Elevation (Show whether DR, RKB, RT, GR, etc.)

3643' GR

12. Check Appropriate Box to Indicate Nature of Notice, Report or Other Data

NOTICE OF INTENTION TO:

PERFORM REMEDIAL WORK ☐PLUG AND ABANDON ☒TEMPORARILY ABANDON ☐CHANGE PLANS ☐PULL OR ALTER CASING ☐MULTIPLE COMPL ☐DOWNHOLE COMMINGLE ☐CLOSED-LOOP SYSTEM ☐OTHER: ☐

SUBSEQUENT REPORT OF:

REMEDIAL WORK ☐ALTERING CASING ☐COMMENCE DRILLING OPNS. ☐P AND A ☐CASING/CEMENT JOB ☐OTHER: ☐

13. Describe proposed or completed operations. (Clearly state all pertinent details, and give pertinent dates, including estimated date of starting any proposed work). SEE RULE 19.15.7.14 NMAC. For Multiple Completions: Attach wellbore diagram of proposed completion or recompletion.

Notify OCD 24 hrs. prior to
any work done.

1. POOH w/ production equipment

2. Make GR and JB run to 7,700'

3. RIH w/ WL and set 7" CIBP at 7,680'. Spot a 39sx Class "H" cmt plug on top of CIBP at 7,480'-7,680'. WOC and tag. This will place a plug over open perfs and Canyon top

4. Spot a 53sx Class "C" cmt plug at 5,340'-5,650'. WOC and tag. This will place a plug across the DV tool and Wolfcamp top

5. Spot a 25sx Class "C" cmt plug at 3,450'-3,600'. This will place a plug across the BS top

6. Spot a 25sx Class "C" cmt plug at 1,890'-2,040'. This will place a plug across the Glorieta top

7. RIH w/ WL and perforate at 1,130'. Attempt to establish injection rate. Spot/Squeeze a 25sx Class "C" cmt plug at 980'-1,130'. WOC and tag. This will place a plug across the 9 5/8 CSG shoe

8. Spot a 25 sx Class "C" cmt plug at 500'-Surface. This will place a plug across the San Andres top to Surface

9. Cut off wellhead and weld on DHM per COA. Clean location as per regulation.

Spud Date:

Rig Release Date:

I hereby certify that the information above is true and complete to the best of my knowledge and belief.

SIGNATURE

TITLE

Regulatory Specialist

DATE

June 11, 2019

Type or print name

Jeremy Haass

E-mail address:

jeremy_haass@eogresources.com

PHONE:

575-748-4311

For State Use Only

APPROVED BY:

TITLE

Staff Mgr

DATE

6/14/19

Conditions of Approval (if any):

Candelilla AKD State Com #2.

Sec-TWN-RNG:
FOOTAGES:

2-20S-24E
660' FSL & 1980' FWL

API: 30-015-26961
GL:
KB:

COMMENTS

A

CASING DETAIL

#	HOLE SIZE	SIZE	WGHT	GRADE	Top	Bottom	Sx Cmt	Circ/TOC	TOC by
A	14 3/4	9 5/8	36	J-55	0	1,074	1100	Circ	
B	8 3/4	7	26 & 23	N-80&J-55	0	8,150	1450	Circ	

FORMATION TOPS

FORMATION	TOP								
San Andres	440								
Glorieta	1985								
BS	3548								
Wolfcamp	5394								
Canyon	7537								

Perforation Detail

Formation	Top	Bottom	Treatment	Notes
Canyon	7728	7818	21000 gal 20% NEFE	

DV tool @ 5595'

Cayon Perfs: 7728-7818

ADDITIONAL DETAIL

DV tool set @ 5595'									

Prepared by: JDE

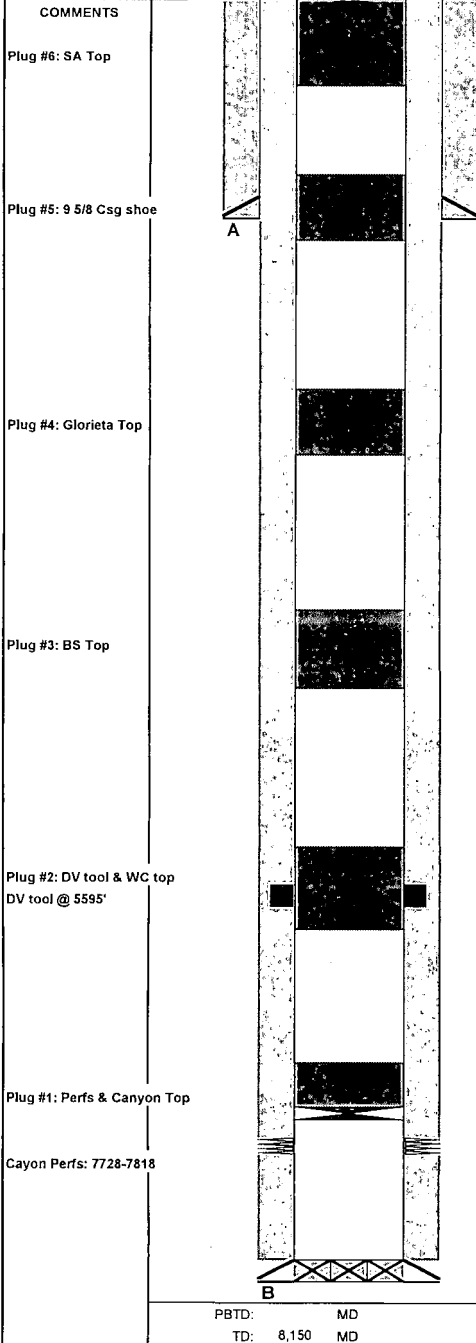
6/5/2019

PBTD: MD
TD: 8,150 MD

Candelilla AKD State Com #2

Sec-TWN-RNG: 2-20S-24E
FOOTAGES: 660' FSL & 1980' FWL

API: 30-015-26961
GL:
KB:



CASING DETAIL

#	HOLE SIZE	SIZE	WGHT	GRADE	Top	Bottom	Sx Cmt	Circ/TOC	TOC by
A	14 3/4	9 5/8	36	J-55	0	1,074	1100	Circ	
B	8 3/4	7	26 & 23	N-80&J-55	0	8,150	1450	Circ	

FORMATION TOPS

FORMATION	TOP
San Andres	440
Glorieta	1988
BS	3548
Wolfcamp	5394
Canyon	7537

Perforation Detail

Formation	Top	Bottom	Treatment	Notes
Canyon	7728	7818	21000 gal 20% NEFE	

Plugs

#	SX	CMT CLASS	TOP	BTM	DESCRIPTION
1	39	C	7480	7680	CIBP w/ 39sx, Perfs & Canyon Top, WOC & tag
2	53	C	5340	5650	DV tool and Wolfcamp top, WOC & tag
3	25	C	3450	3600	BS Top
4	25	C	1890	2040	Glorieta top
5	25	C	980	1130	9 5/8 CSG Shoe, Perf @ 1120 & attempt inj, WOC & tag
6	85	C	0	500	SA top & Surface Plug

ADDITIONAL DETAIL

DV tool set @ 5595'					
---------------------	--	--	--	--	--

Prepared by: JDE

6/5/2019

CONDITIONS FOR PLUGGING AND ABANDONMENT

District II / Artesia N.M.

The following is a guide or checklist in preparation of a plugging program, this is not all inclusive and care must be exercised in establishing special plugging programs in unique and unusual cases, **Notify NMOCD District Office II at (575)-748-1283 at least 24 hours before beginning work.**

1. A notice of intent to plug and abandon a wellbore is required to be approved before plugging operations are conducted. A cement evaluation tool is required in order to ensure isolation of producing formations, protection of water and correlative rights. A cement bond log or other accepted cement evaluation tool is to be provided to the division for evaluation if one has not been previously run or if the well did not have cement circulated to surface during the original casing cementing job or subsequent cementing jobs.
2. Closed loop system is to be used for entire plugging operation. Upon completion, contents of steel pits are to be hauled to a permitted disposal location.
3. Trucking companies being used to haul oilfield waste fluids to a disposal – commercial or private – shall have an approved NMOCD C-133 permit. A copy of this permit shall be available in each truck used to haul waste products. It is the responsibility of the operator as well as the contractor, to verify that this permit is in place prior to performing work. Drivers shall be able to produce a copy upon request of an NMOCD Field inspector.
4. Filing a subsequent C-103 will serve as notification that the well has been plugged.
5. A final C-103 shall be filed (and a site inspection by NMOCD Inspector to determine if the location is satisfactorily cleaned, all equipment, electric poles and trash has been removed to Meet NMOCD standards) before bonding can be released.
6. If the well is not plugged within 1
7. If work has not begun within 1 Year of the approval of this procedure, an extension request must be file stating the reason the well has not been plugged.
8. **Squeeze pressures are not to exceed 500 psi, unless approval is given by NMOCD.**
9. Produced water **will not** be used during any part of the plugging operation.
10. Mud laden fluids must be placed between all cement plugs mixed at 25 sacks per 100 bbls of water.
11. All cement plugs will be a minimum of 100' in length or a minimum of 25 sacks of cement, whichever is greater. 50' of calculated cement excess required for inside casing plugs and 100% calculated cement excess required on outside casing plugs.
12. **Class 'C' cement will be used above 7500 feet.**
13. **Class 'H' cement will be used below 7500 feet.**
14. **A cement plug is required to be set 50' above and 50' below, casing stubs, DV tools, attempted casing cut offs, cement tops outside casing, salt sections and anywhere the casing is perforated, these plugs require a 4 hour WOC and then will be tagged**
15. **All Casing Shoes Will Be Perforated 50' below shoe depth and Attempted to be Squeezed, cement needs to be 50' above and 50' Below Casing Shoe inside the Production Casing**

16. When setting the top out cement plug in production, intermediate and surface casing, wellbores should remain full at least 30 minutes after plugs are set
17. **A CIBP is to be set within 100' of production perforations, capped with 100' of cement, WOC 4 hours and tag.**
18. A CIBP with 35' of cement may be used in lieu of the 100' plug if set with a bailer. This plug will be placed within 100' of the top perforation, **(WOC 4 hrs and tag).**
19. No more than **3000'** is allowed between cement plugs in cased hole and **2000'** in open hole.
20. Some of the Formations to be isolated with cement plugs are: These plugs to be set to isolate formation tops
 - A) Fusselman
 - B) Devonian
 - C) Morrow
 - D) Wolfcamp
 - E) Bone Springs
 - F) Delaware
 - G) Any salt sections
 - H) Abo
 - I) Glorieta
 - J) Yates.
 - K) **Potash---** (In the R-111-P Area (Potash Mine Area), a solid cement plug must be set across the salt section. Fluid used to mix the cement shall be saturated with the salts that are common to the section penetrated and in suitable proportions, not more than 3% calcium chloride (by weight of cement) will be considered the desired mixture whenever possible, **WOC 4 hours and tag, this plug will be 50' below the bottom and 50' above the top of the Formation.**
21. **If cement does not exist behind casing strings at recommended formation depths, the casing can be cut and pulled with plugs set at recommended depths. If casing is not pulled, perforations will be shot and cement squeezed behind casing, WOC and tagged. These plugs will be set 50' below formation bottom to 50' above formation top inside the casing**

DRY HOLE MARKER REQUIREMENTS

The operator shall mark the exact location of the plugged and abandoned well with a steel marker not less than four inches in diameter, 3' below ground level with a plate of at least ¼" welded to the top of the casing and the dry hole marker welded on the plate with the following information welded on the dry hole marker:

1. Operator name 2. Lease and Well Number 3.API Number 4. Unit Letter 5. Quarter Section (feet from the North, South, East or West) 6. Section, Township and Range 7. Plugging Date 8. County (SPECIAL CASES)-----AGRICULTURE OR PRARIE CHICKEN BREEDING AREAS

In these areas, a below ground marker is required with all pertinent information mentioned above on a plate, set 3' below ground level, a picture of the plate will be supplied to NMOCD for record, the exact location of the marker (longitude and latitude by GPS) will be provided to NMOCD (We typically require a current survey to verify the GPS)