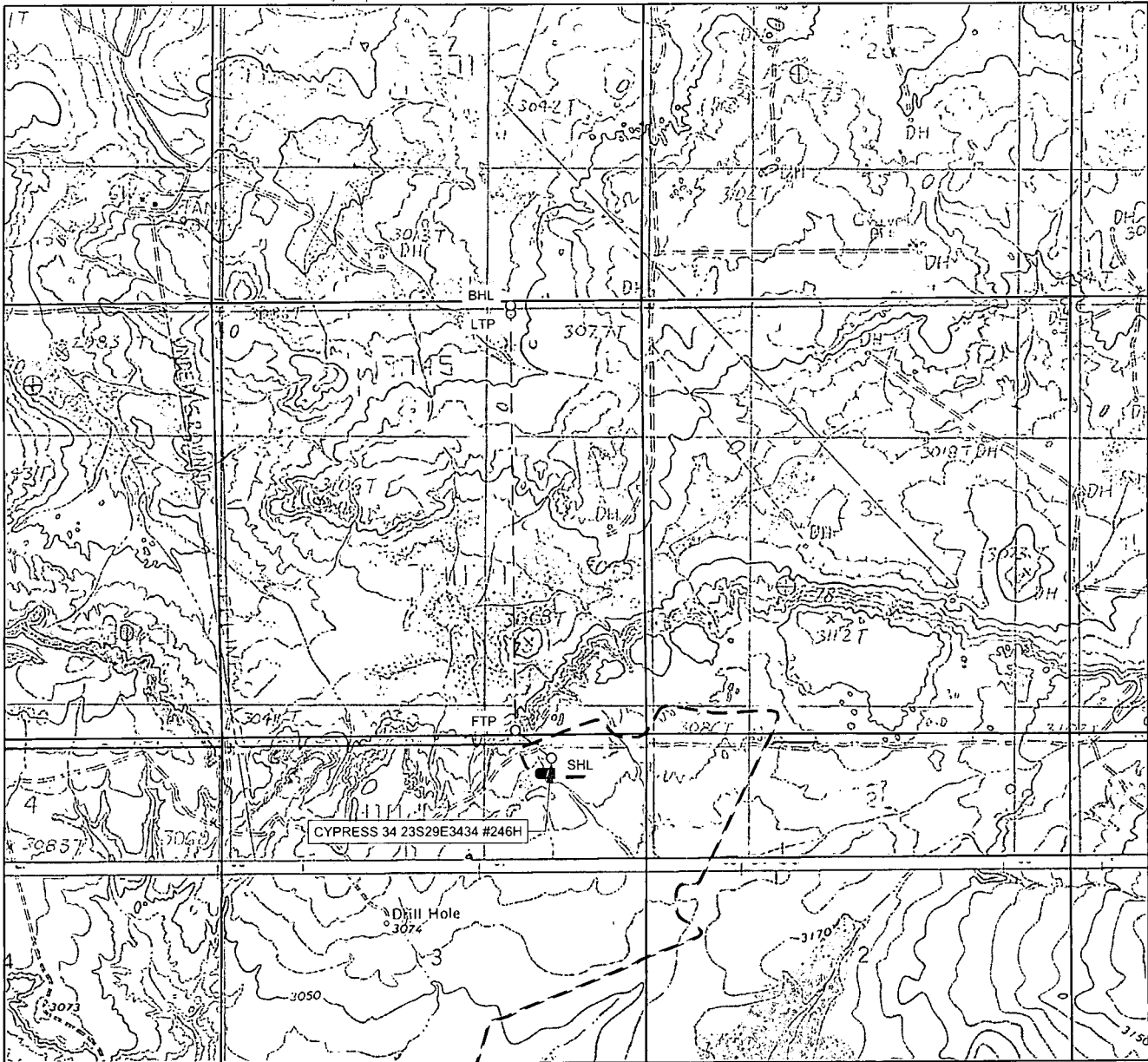




# LOCATION & ELEVATION VERIFICATION MAP



LEASE NAME & WELL NO.: CYPRESS 34 23S29E3434 #246H

SECTION 3 TWP 24-S RGE 29-E SURVEY N.M.P.M.  
 COUNTY EDDY STATE NM ELEVATION 3093'  
 DESCRIPTION 241' FNL & 1146' FEL

LATITUDE N 32.2533360 LONGITUDE W 103.9675953



SCALE: 1" = 2000'  
 0' 1000' 2000'



**TOPOGRAPHIC**  
 LOYALTY INNOVATION LEGACY

1400 EVERMAN PARKWAY, Ste. 146 • FT. WORTH, TEXAS 76140  
 TELEPHONE: (817) 744-7512 • FAX (817) 744-7554  
 2903 NORTH BIG SPRING • MIDLAND, TEXAS 79705  
 TELEPHONE: (432) 682-1653 OR (800) 767-1653 • FAX (432) 682-1743  
 WWW.TOPOGRAPHIC.COM

THIS EASEMENT/SERVITUDE LOCATION SHOWN HEREON HAS BEEN SURVEYED ON THE GROUND UNDER MY SUPERVISION AND PREPARED ACCORDING TO THE EVIDENCE FOUND AT THE TIME OF SURVEY, AND DATA PROVIDED BY TAP ROCK OPERATING, LLC. THIS CERTIFICATION IS MADE AND LIMITED TO THOSE PERSONS OR ENTITIES SHOWN ON THE FACE OF THIS PLAT AND IS NON-TRANSFERABLE. THIS SURVEY IS CERTIFIED FOR THIS TRANSACTION ONLY.

ALL BEARINGS, DISTANCES, AND COORDINATE VALUES CONTAINED HEREON ARE GRID BASED UPON THE NEW MEXICO COORDINATE SYSTEM OF 1983, EAST ZONE, U.S. SURVEY FEET.