

RECEIVED

JUN 28 2019

DISTRICT II-ARTESIA O.C.D.

District I
1625 N. French Dr., Hobbs, NM 88240
Phone: (575) 393-6161 Fax: (575) 393-0720
District II
811 S. First St., Artesia, NM 88210
Phone: (575) 748-1283 Fax: (575) 748-9720
District III
1000 Rio Brazos Road, Aztec, NM 87410
Phone: (505) 334-6178 Fax: (505) 334-6170
District IV
1220 S. St. Francis Dr., Santa Fe, NM 87505
Phone: (505) 476-3460 Fax: (505) 476-3462

State of New Mexico
Energy, Minerals & Natural Resources Department
OIL CONSERVATION DIVISION
1220 South St. Francis Dr.
Santa Fe, NM 87505

Form C-102
Revised August 1, 2011
Submit one copy to appropriate
District Office

☐ AMENDED REPORT

WELL LOCATION AND ACREAGE DEDICATION PLAT

¹ API Number 30-015- 46162	² Pool Code 96473	³ Pool Name PIERCE CROSSING; BONE SPRING, EAST
⁴ Property Code 325779	⁵ Property Name TOMBSTONE 11 STATE	
⁷ OGRID No. 005380	⁸ Operator Name XTO ENERGY, INC.	⁶ Well Number 701H
		⁹ Elevation 3,089'

¹⁰ Surface Location

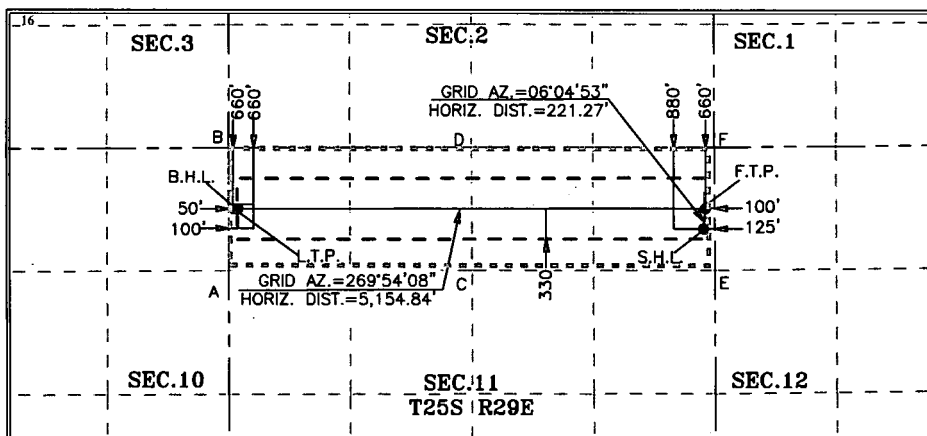
UL or lot no.	Section	Township	Range	Lot Idn	Feet from the	North/South line	Feet from the	East/West line	County
A	11	25 S	29 E		880	NORTH	125	EAST	EDDY

¹¹ Bottom Hole Location If Different From Surface

UL or lot no.	Section	Township	Range	Lot Idn	Feet from the	North/South line	Feet from the	East/West line	County
D	11	25 S	29 E		660	NORTH	50	WEST	EDDY

¹² Dedicated Acres 160	¹³ Joint or Infill	¹⁴ Consolidation Code	¹⁵ Order No.
--------------------------------------	-------------------------------	----------------------------------	-------------------------

No allowable will be assigned to this completion until all interests have been consolidated or a non-standard unit has been approved by the division.



¹⁷ OPERATOR CERTIFICATION
I hereby certify that the information contained herein is true and complete to the best of my knowledge and belief, and that this organization either owns a working interest or unleased mineral interest in the land including the proposed bottom hole location or has a right to drill this well at this location pursuant to a contract with an owner of such a mineral or working interest, or to a voluntary pooling agreement or a compulsory pooling order heretofore entered by the division.

Kelly Kardos 6-26-19
Signature Date

Kelly Kardos
Printed Name

kelly_kardos@xtoenergy.com
E-mail Address

¹⁸ SURVEYOR CERTIFICATION
I hereby certify that the well location shown on this plat was plotted from field notes of actual surveys made by me or under my supervision, and that the same is true and correct to the best of my belief.

02-28-2019
Date of Survey

Signature and Seal of Professional Surveyor:

MARK DILLON HARP 23786
Certificate Number JC 2019010085

GEODETIC COORDINATES SURFACE LOCATION NAD 27 NME Y= 418,288.2 X= 619,716.8 LAT.= 32.149400°N LONG.= 103.946516°W LAST TAKE POINT NAD 27 NME Y= 418,499.4 X= 614,635.4 LAT.= 32.150030°N LONG.= 103.962932°W FIRST TAKE POINT NAD 27 NME Y= 418,508.2 X= 619,740.2 LAT.= 32.150004°N LONG.= 103.946438°W BOTTOM HOLE LOCATION NAD 27 NME Y= 418,499.3 X= 614,585.4 LAT.= 32.150030°N LONG.= 103.963094°W CORNER COORDINATES TABLE NAD 27 NME A - Y= 417,831.1 N, X= 614,537.3 E B - Y= 419,159.1 N, X= 614,533.5 E C - Y= 417,836.9 N, X= 617,191.0 E D - Y= 419,165.0 N, X= 617,183.8 E E - Y= 417,841.3 N, X= 619,844.8 E F - Y= 419,168.2 N, X= 619,835.6 E	GEODETIC COORDINATES SURFACE LOCATION NAD 83 NME Y= 418,346.6 X= 660,901.1 LAT.= 32.149524°N LONG.= 103.947002°W LAST TAKE POINT NAD 83 NME Y= 418,557.9 X= 655,819.7 LAT.= 32.150153°N LONG.= 103.963419°W FIRST TAKE POINT NAD 83 NME Y= 418,566.6 X= 660,924.5 LAT.= 32.150128°N LONG.= 103.946924°W BOTTOM HOLE LOCATION NAD 83 NME Y= 418,557.8 X= 655,769.7 LAT.= 32.150154°N LONG.= 103.963580°W CORNER COORDINATES TABLE NAD 83 NME A - Y= 417,889.6 N, X= 655,721.6 E B - Y= 419,217.6 N, X= 655,717.8 E C - Y= 417,895.3 N, X= 658,375.3 E D - Y= 419,223.5 N, X= 658,368.1 E E - Y= 417,899.7 N, X= 661,029.2 E F - Y= 419,226.7 N, X= 661,019.9 E
-------------------------------------------------------------------------------------------------------------------------------------------------------------------------------------------------------------------------------------------------------------------------------------------------------------------------------------------------------------------------------------------------------------------------------------------------------------------------------------------------------------------------------------------------------------------------------------------------------------------------------------------------------------------------------------------------------------------------------------------------------------------------------------------------------------------------	-------------------------------------------------------------------------------------------------------------------------------------------------------------------------------------------------------------------------------------------------------------------------------------------------------------------------------------------------------------------------------------------------------------------------------------------------------------------------------------------------------------------------------------------------------------------------------------------------------------------------------------------------------------------------------------------------------------------------------------------------------------------------------------------------------------------------

RW