

District I  
1625 N. French Dr., Hobbs, NM 88240  
Phone: (575) 393-6161 Fax: (575) 393-0720  
District II  
811 S. First St., Artesia, NM 88210  
Phone: (575) 748-1283 Fax: (575) 748-9720  
District III  
1000 Rio Brazos Road, Aztec, NM 87410  
Phone: (505) 334-6178 Fax: (505) 334-6170  
District IV  
1220 S. St. Francis Dr., Santa Fe, NM 87505  
Phone: (505) 476-3460 Fax: (505) 476-3462

State of New Mexico  
Energy, Minerals & Natural Resources Department  
OIL CONSERVATION DIVISION  
1220 South St. Francis Dr.  
Santa Fe, NM 87505

RECEIVED

JUN 28 2019

DISTRICT II-ARTESIA/O.C.D.

Form C-102  
Revised August 1, 2011  
Submit one copy to appropriate  
District Office  
☐ AMENDED REPORT

WELL LOCATION AND ACREAGE DEDICATION PLAT

<sup>1</sup> API Number 30-015- <b>46166</b>	<sup>2</sup> Pool Code 98220	<sup>3</sup> Pool Name PURPLE SAGE; WOLFCAMP
<sup>4</sup> Property Code <b>325779</b>	<sup>5</sup> Property Name TOMBSTONE 11 STATE	
<sup>7</sup> OGRID No. 005380	<sup>8</sup> Operator Name XTO ENERGY, INC.	<sup>6</sup> Well Number 126H
		<sup>9</sup> Elevation 3,134'

<sup>10</sup> Surface Location

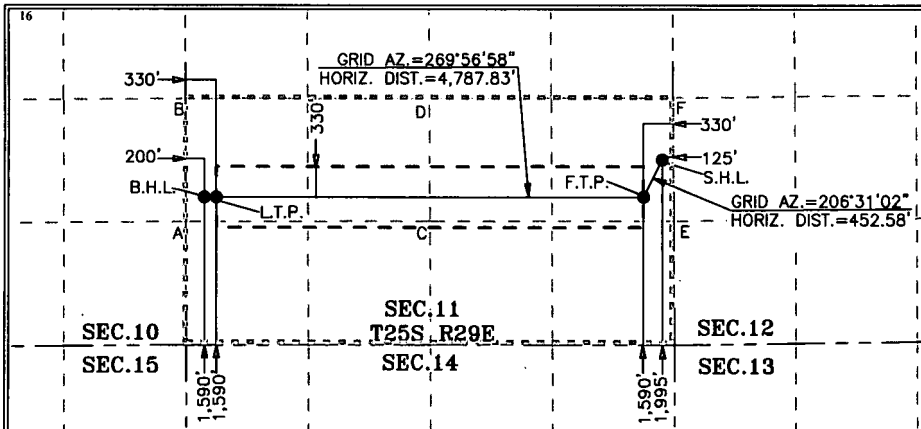
UL or lot no.	Section	Township	Range	Lot Idn	Feet from the	North/South line	Feet from the	East/West line	County
I	11	25 S	29 E		1,995	SOUTH	125	EAST	EDDY

<sup>11</sup> Bottom Hole Location If Different From Surface

UL or lot no.	Section	Township	Range	Lot Idn	Feet from the	North/South line	Feet from the	East/West line	County
L	11	25 S	29 E		1,590	SOUTH	200	WEST	EDDY

<sup>12</sup> Dedicated Acres 320	<sup>13</sup> Joint or Infill	<sup>14</sup> Consolidation Code	<sup>15</sup> Order No.
--------------------------------------	-------------------------------	----------------------------------	-------------------------

No allowable will be assigned to this completion until all interests have been consolidated or a non-standard unit has been approved by the division.



<sup>17</sup> OPERATOR CERTIFICATION

I hereby certify that the information contained herein is true and complete to the best of my knowledge and belief, and that this organization either owns a working interest or unleased mineral interest in the land including the proposed bottom hole location or has a right to drill this well at this location pursuant to a contract with an owner of such a mineral or working interest, or to a voluntary pooling agreement or a compulsory pooling order heretofore entered by the division.

*Kelly Kardos* 6-25-19  
Signature Date

Kelly Kardos

Printed Name

kelly\_kardos@xtoenergy.com

E-mail Address

<sup>18</sup> SURVEYOR CERTIFICATION

I hereby certify that the well location shown on this plat was plotted from field notes of actual surveys made by me or under my supervision, and that the same is true and correct to the best of my belief.

02-28-2019

Date of Survey

Signature and Seal of  
Professional Surveyor:



MARK DILLON HARP 23786

Certificate Number

JC

2019010101

GEODETIC COORDINATES

SURFACE LOCATION

NAD 27 NME

Y= 415,847.5

X= 619,734.0

LAT.= 32.142690°N

LONG.= 103.946489°W

LAST TAKE POINT

NAD 27 NME

Y= 415,438.4

X= 614,874.1

LAT.= 32.141613°N

LONG.= 103.962195°W

GEODETIC COORDINATES

SURFACE LOCATION

NAD 83 NME

Y= 415,905.9

X= 660,918.4

LAT.= 32.142814°N

LONG.= 103.946975°W

LAST TAKE POINT

NAD 83 NME

Y= 415,496.8

X= 656,058.5

LAT.= 32.141737°N

LONG.= 103.962681°W

FIRST TAKE POINT

NAD 27 NME

Y= 415,442.5

X= 619,531.9

LAT.= 32.141579°N

LONG.= 103.947147°W

BOTTOM HOLE LOCATION

NAD 27 NME

Y= 415,438.3

X= 614,744.1

LAT.= 32.141614°N

LONG.= 103.962615°W

FIRST TAKE POINT

NAD 83 NME

Y= 415,500.9

X= 660,716.3

LAT.= 32.141703°N

LONG.= 103.947633°W

BOTTOM HOLE LOCATION

NAD 83 NME

Y= 415,496.7

X= 655,928.5

LAT.= 32.141738°N

LONG.= 103.963101°W

CORNER COORDINATES TABLE

NAD 27 NME

A - Y= 415,175.5 N, X= 614,544.8 E

B - Y= 416,503.2 N, X= 614,541.2 E

C - Y= 415,180.9 N, X= 617,205.3 E

D - Y= 416,508.7 N, X= 617,198.1 E

E - Y= 415,183.4 N, X= 619,863.8 E

F - Y= 416,514.3 N, X= 619,854.2 E

CORNER COORDINATES TABLE

NAD 83 NME

A - Y= 415,233.9 N, X= 655,729.2 E

B - Y= 416,561.6 N, X= 655,725.5 E

C - Y= 415,239.3 N, X= 658,389.7 E

D - Y= 416,567.1 N, X= 658,382.5 E

E - Y= 415,241.8 N, X= 661,048.2 E

F - Y= 416,572.7 N, X= 661,038.6 E

Rev 7-2-19