

DISTRICT I  
1625 N. French Dr., Hobbs, NM 88240  
Phone (505) 393-6161 Fax: (505) 393-0720

DISTRICT II  
811 S. First St., Artesia, NM 88210  
Phone (505) 748-1283 Fax: (505) 748-0720

DISTRICT III  
1000 Rio Brazos Rd., Aztec, NM 87410  
Phone (505) 334-6176 Fax: (505) 334-6170

DISTRICT IV  
1220 S. St. Francis Dr., Santa Fe, NM 87505  
Phone (505) 476-8460 Fax: (505) 476-3462

State of New Mexico  
Energy, Minerals and Natural Resources Department

RECEIVED

Form C-102  
Revised August 13, 2011

Submit one copy to appropriate  
District Office

OIL CONSERVATION DIVISION  
1220 South St. Francis Dr. JUN 10 2019  
Santa Fe, New Mexico 87505

DISTRICT II-ARTESIA O.C.D.

WELL LOCATION AND ACREAGE DEDICATION PLAT

AMENDED REPORT

API Number 30-015-46082	Pool Code 13367	Pool Name Cotton Draw; Bone Spring
Property Code 325747	Property Name TODD 2-24S-31E STATE	Well Number 304H
OGRID No. 373986	Operator Name TITUS OIL & GAS PRODUCTION, LLC	Elevation 3507'

Surface Location

UL or lot No.	Section	Township	Range	Lot Idn	FEET from the	SOUTH/South line	FEET from the	East/EAST line	County
N	2	24 S	31 E		255	SOUTH	2640	WEST	EDDY

Bottom Hole Location If Different From Surface

UL or lot No.	Section	Township	Range	Lot Idn	FEET from the	SOUTH/South line	FEET from the	East/EAST line	County
C	2	24 S	31 E		10	NORTH	2310	WEST	EDDY
Dedicated Acres 159.98ac	Joint or Infill	Consolidation Code	Order No.						

NO ALLOWABLE WILL BE ASSIGNED TO THIS COMPLETION UNTIL ALL INTERESTS HAVE BEEN CONSOLIDATED  
OR A NON-STANDARD UNIT HAS BEEN APPROVED BY THE DIVISION

N456485.5 E719484.2 NAD 83	2310'	B.H. L.T.P.	N456510.0 E722102.1 NAD 83	N456524.5 E724740.8 NAD 83	<b>PROPOSED BOTTOM HOLE LOCATION</b> Lat - N 32.253642° Long - W 103.749650° NMSPCE- N 456498.2 E 721774.2 (NAD-83) (NAVD-88)
					<b>LAST TAKE POINT</b> 100' FNL & 2310' FWL Lat - N 32.253394° Long - W 103.749650° NMSPCE- N 456408.2 E 721774.6 (NAD-83) (NAVD-88)
N453854.3 E719474.2 NAD 83				N453884.4 E724759.3 NAD 83	<b>FIRST TAKE POINT</b> 100' FSL & 2310' FWL Lat - N 32.239428° Long - W 103.749672° NMSPCE- N 451327.6 E 721795.1 (NAD-83) (NAVD-88)
N451214.0 E719485.5 NAD 83	2640'	F.T.P.	N451229.6 E722125.9 NAD 83	N451247.2 E724767.6 NAD 83	<b>SURFACE HOLE LOCATION</b> Lat - N 32.239854° Long - W 103.748606° NMSPCE- N 451484.6 E 722124.0 (NAD-83) (NAVD-88)

**OPERATOR CERTIFICATION**

I hereby certify that the information contained herein is true and complete to the best of my knowledge and belief, and that this organization either owns a working interest or unleased mineral interest in the land including the proposed bottom hole location or has a right to drill this well at this location pursuant to a contract with an owner of such a mineral or working interest, or to a voluntary pooling agreement or a compulsory pooling order heretofore entered by the division.

Signature: *Ryan DeLong* Date: 5/31/2019  
Ryan DeLong - Regulatory Manager  
Printed Name: rdelong@titusoil.com  
Email Address:

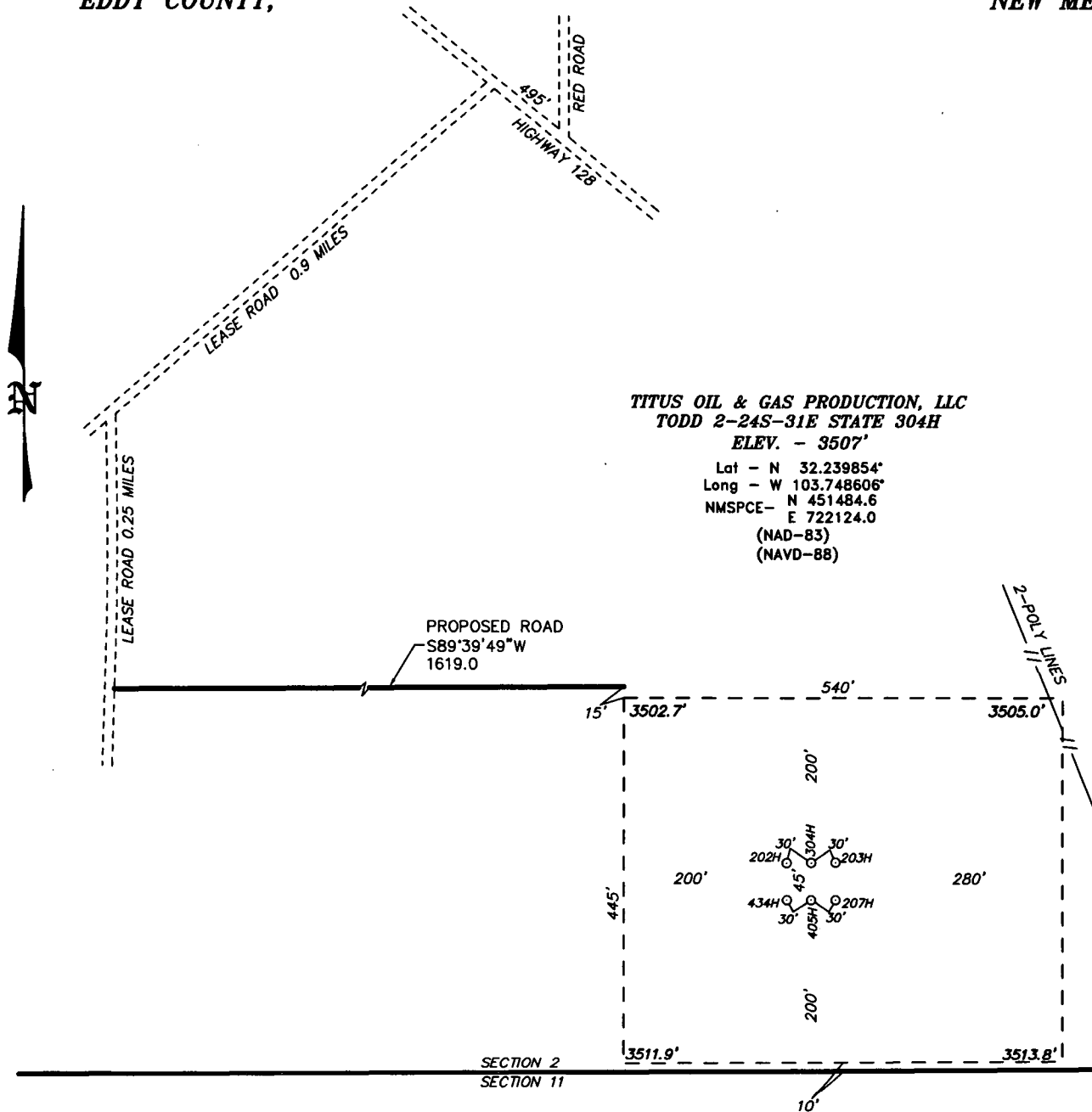
**SURVEYOR CERTIFICATION**

I hereby certify that the well location shown on this plat was plotted from field notes of actual surveys made by me or under my supervision, and that the same is true and correct to the best of my belief.

Date Surveyed: MAY 29, 2019  
Signature of Professional Surveyor: *[Signature]*  
Certificate No.: 7977  
Scale: 1" = 1000'  
WO Num.: 34600

RW 7-24-19

**SECTION 2, TOWNSHIP 24 SOUTH, RANGE 31 EAST, N.M.P.M.,  
EDDY COUNTY, NEW MEXICO.**



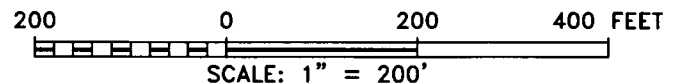
**TITUS OIL & GAS PRODUCTION, LLC**  
**TODD 2-24S-31E STATE 304H**  
**ELEV. - 3507'**

Lat - N 32.239854°  
 Long - W 103.748606°  
 NMSPC- N 451484.6  
 E 722124.0  
 (NAD-83)  
 (NAVD-88)

**Directions to Location:**

FROM THE JUNCTION OF RED ROAD AND HIGHWAY 128 GO NORTHWEST 495 FEET TO LEASE ROAD, THEN GO SOUTHWEST 0.9 MILES, THEN GO SOUTH 0.25 MILES TO PROPOSED ROAD.

MALAGA, NM IS ±19 MILES TO THE WEST/SOUTHWEST OF LOCATION.



**TITUS OIL & GAS PRODUCTION, LLC**

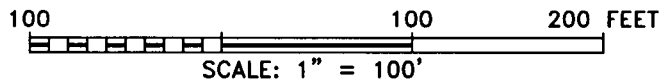
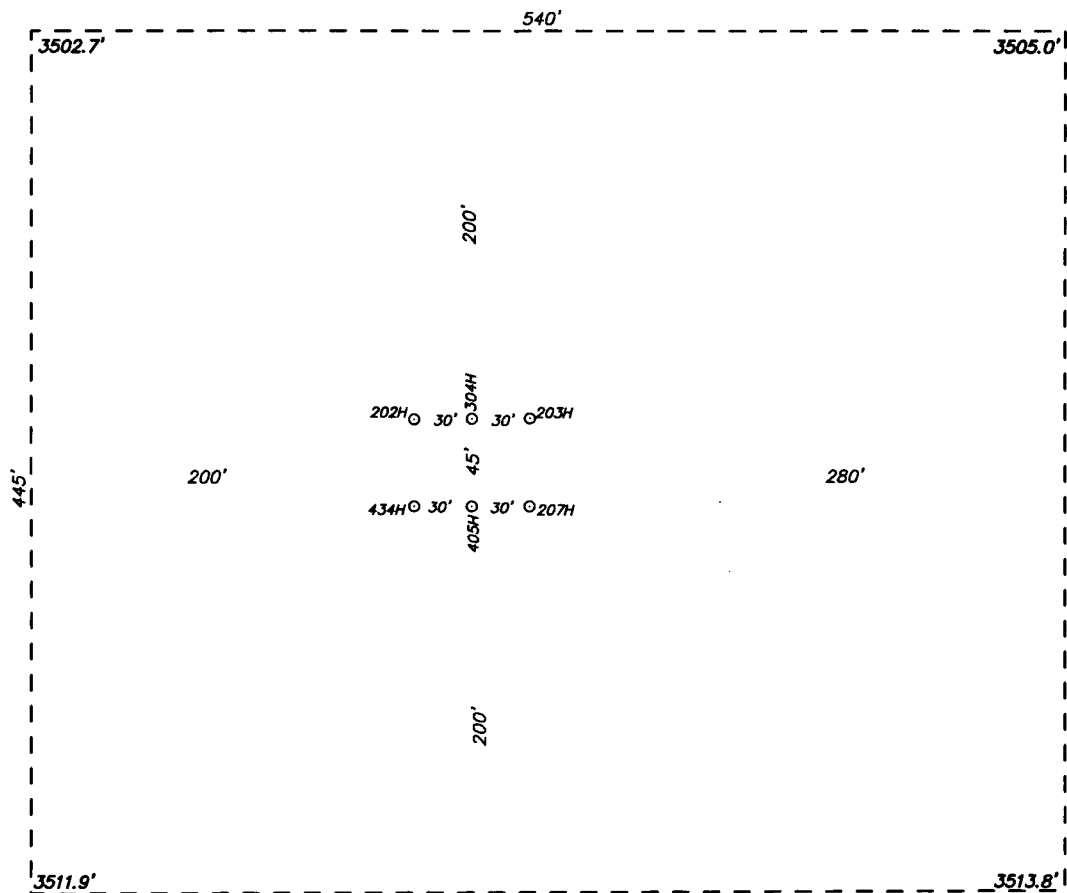
REF: TODD 2-24S-31E STATE 304H / WELL PAD TOPO

THE TODD 2-24S-31E STATE 304H LOCATED 255' FROM  
 THE SOUTH LINE AND 2640' FROM THE WEST LINE OF  
 SECTION 2, TOWNSHIP 24 SOUTH, RANGE 31 EAST,  
 N.M.P.M., EDDY COUNTY, NEW MEXICO.

**basin**  
**surveys**  
 focused on excellence  
 in the oilfield

P.O. Box 1786 (575) 393-7316 - Office  
 1120 N. West County Rd. (575) 392-2206 - Fax  
 Hobbs, New Mexico 88241 basin-surveys.com

**SECTION 2, TOWNSHIP 24 SOUTH, RANGE 31 EAST, N.M.P.M.,  
EDDY COUNTY, NEW MEXICO.**



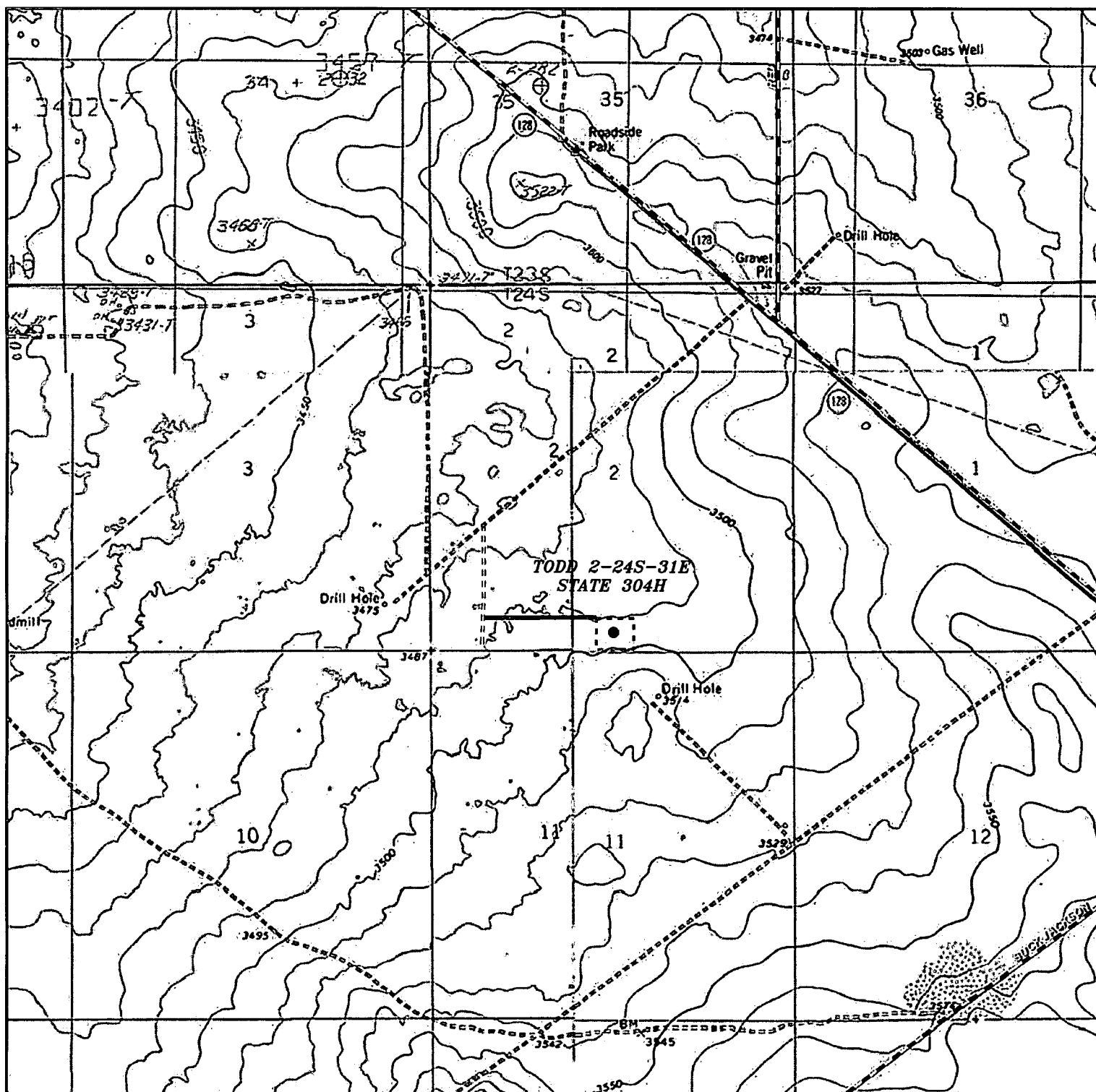
**TITUS OIL & GAS PRODUCTION, LLC**

REF: TODD 2-24S-31E STATE 304H / WELL PAD TOPO

THE TODD 2-24S-31E STATE 304H LOCATED 255' FROM  
THE SOUTH LINE AND 2640' FROM THE WEST LINE OF  
SECTION 2, TOWNSHIP 24 SOUTH, RANGE 31 EAST,  
N.M.P.M., EDDY COUNTY, NEW MEXICO.

**basin  
surveys**  
focused on excellence  
in the oilfield

P.O. Box 1786  
1120 N. West County Rd.  
Hobbs, New Mexico 88241  
(575) 393-7316 - Office  
(575) 392-2206 - Fax  
basinsurveys.com



### TODD 2-24S-31E STATE 304H

Located 255' FSL and 2640' FWL  
 Section 2, Township 24 South, Range 31 East,  
 N.M.P.M., Eddy County, New Mexico.

**basin**  
**surveys**

focused on excellence  
 in the oilfield

P.O. Box 1786  
 1120 N. West County Rd.  
 Hobbs, New Mexico 88241  
 (575) 393-7316 - Office  
 (575) 392-2206 - Fax  
 basinsurveys.com

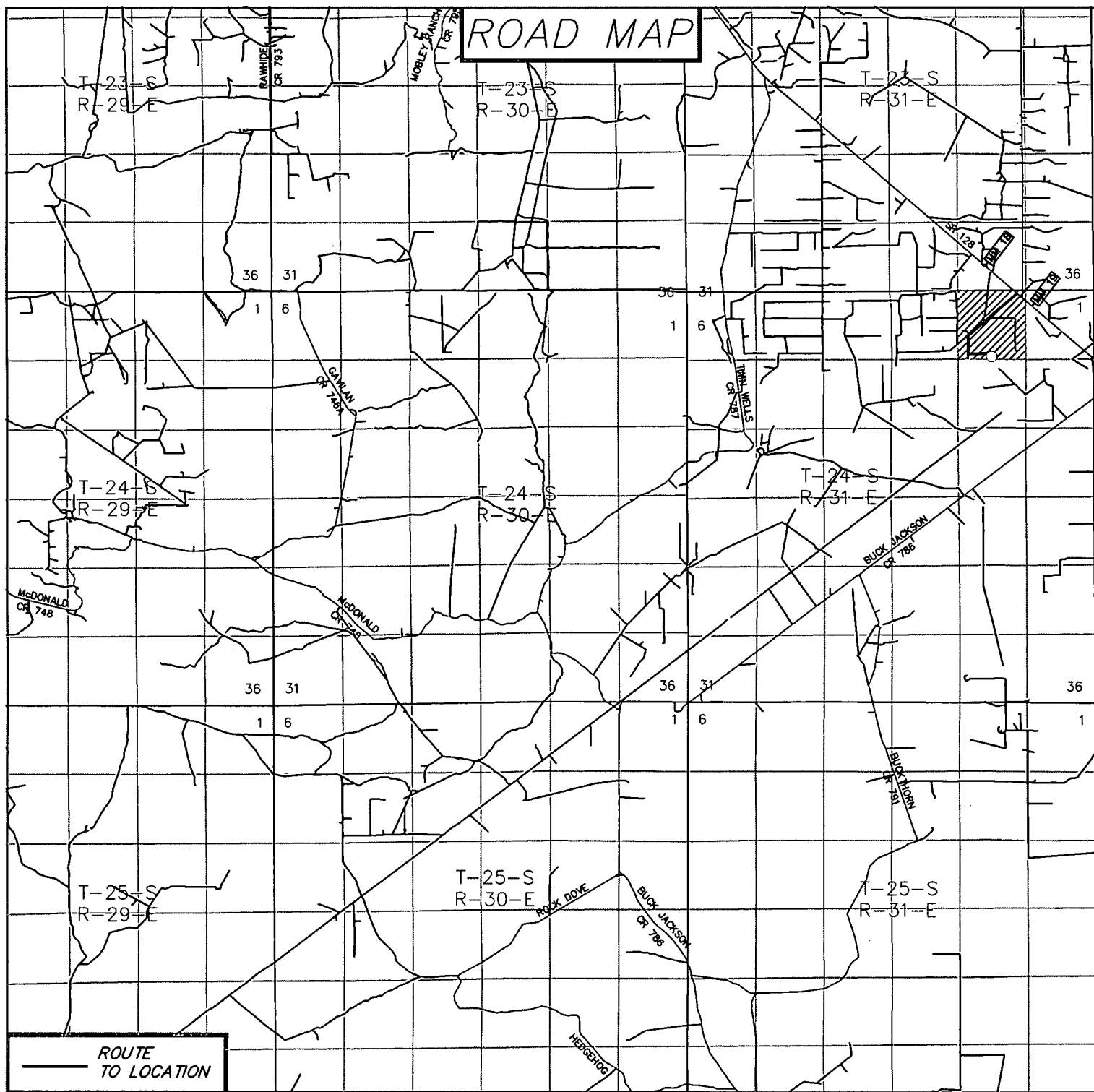
0' 1000' 2000' 3000' 4000'  
 SCALE: 1" = 2000'

W.O. Number: JG 34600

Survey Date: 5-29-2019

YELLOW TINT - USA LAND  
 BLUE TINT - STATE LAND  
 NATURAL COLOR - FEE LAND

**TITUS**  
**OIL & GAS**  
**PRODUCTION,**  
**LLC**



# TODD 2-24S-31E STATE 304H

Located 255' FSL and 2640' FWL  
 Section 2, Township 24 South, Range 31 East,  
 N.M.P.M., Eddy County, New Mexico.

**basin**  
**surveys**  
 focused on excellence  
 in the oilfield

P.O. Box 1786  
 1120 N. West County Rd.  
 Hobbs, New Mexico 88241  
 (575) 393-7316 - Office  
 (575) 392-2206 - Fax  
 basinsurveys.com

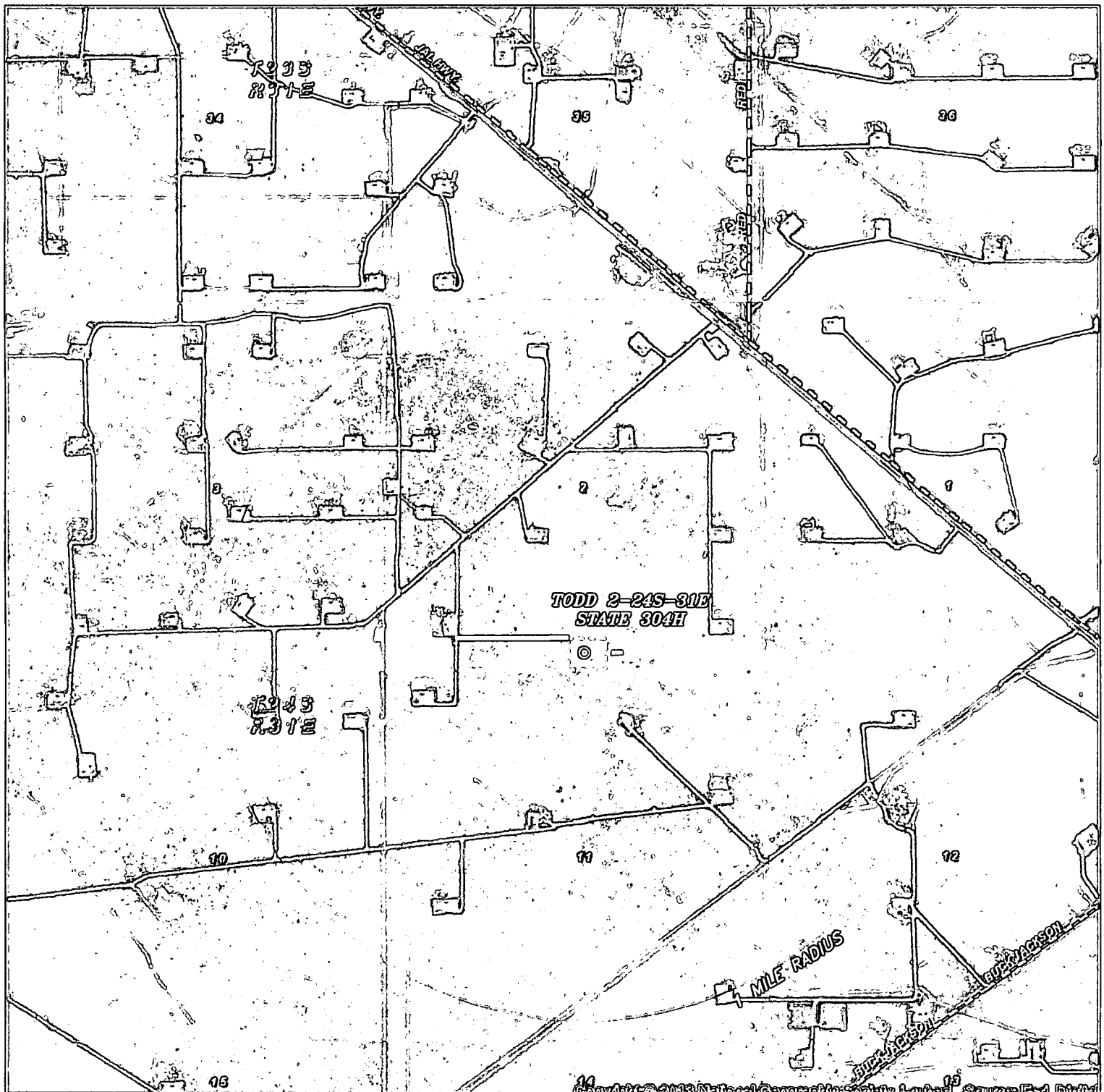
0 1 MI 2 MI 3 MI 4 MI  
 SCALE: 1" = 2 MILES

W.O. Number: JG 34600

Survey Date: 5-29-2019

YELLOW TINT - USA LAND  
 BLUE TINT - STATE LAND  
 NATURAL COLOR - FEE LAND

**TITUS**  
**OIL & GAS**  
**PRODUCTION,**  
**LLC**



PROPOSED  
ROAD

## TODD 2-24S-31E STATE 304H

Located 255' FSL and 2640' FWL  
Section 2, Township 24 South, Range 31 East,  
N.M.P.M., Eddy County, New Mexico.

**basin**  
**surveys**

focused on excellence  
in the oilfield

P.O. Box 1786  
1120 N. West County Rd.  
Hobbs, New Mexico 88241  
(575) 393-7316 - Office  
(575) 392-2206 - Fax  
basinsurveys.com

0' 1000' 2000' 3000' 4000'  
SCALE: 1" = 2000'

W.O. Number: JG 34600

Survey Date: 5-29-2019

YELLOW TINT - USA LAND  
BLUE TINT - STATE LAND  
NATURAL COLOR - FEE LAND

**TITUS**  
**OIL & GAS**  
**PRODUCTION,**  
**LLC**