

JUN 27 2019

**DISTRICT I**  
1625 N. FRENCH DR., HOBBS, NM 88240  
Phone: (505) 383-6161 Fax: (505) 383-0780

**DISTRICT II**  
**611 S. FIRST ST., ARTESIA, NM 88210**  
**Phone: (576) 746-1283 Fax: (576) 746-9729**

**DISTRICT III**  
1000 RIO BRAZOS RD., AZTEC, NM 87410  
Phone: (505) 334-6178 Fax: (505) 334-6170

**DISTRICT IV**  
1220 S. ST. FRANCIS DR., SANTA FE, NM 87505  
Phone: (505) 476-3460 Fax: (505) 476-3462

State of New Mexico  
Energy, Minerals & Natural Resources Department  
OIL CONSERVATION DIVISION  
1220 SOUTH ST. FRANCIS DR.  
Santa Fe, New Mexico 87505

Form C-102  
Revised August 1, 2011  
Submit one copy to appropriate  
District Office

☐ AMENDED REPORT

# WELL LOCATION AND ACREAGE DEDICATION PLAT

API Number	Pool Code	Pool Name
30-015-45162	98220	Purple Sage; Wolfcamp Gas
Property Code	Property Name	Well Number
322243	LITTLEFIELD 33 FEDERAL COM	705H
OGRID No.	Operator Name	Elevation
229137	COG OPERATING, LLC	2860.4'

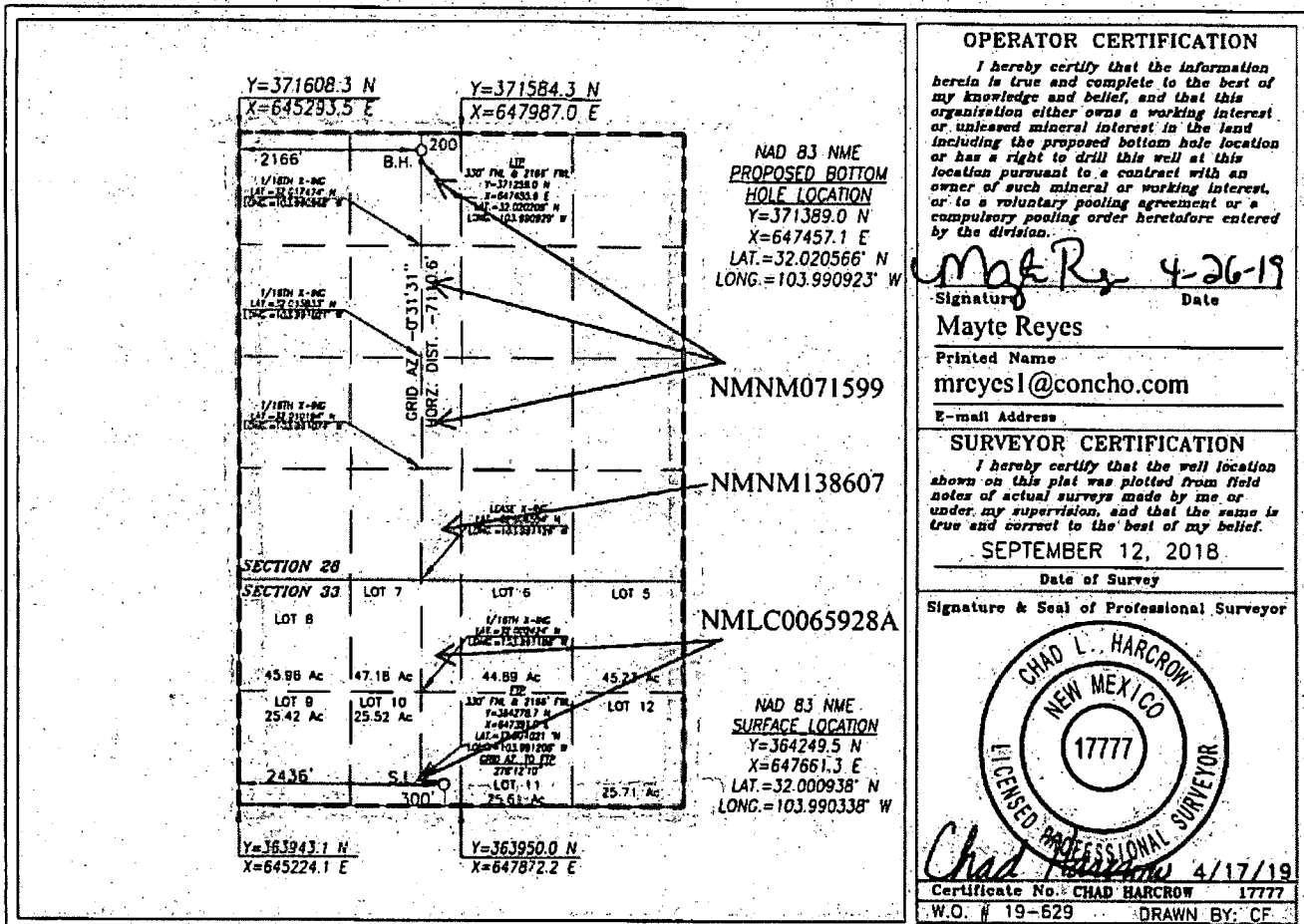
### Surface Location

UL or lot No.	Section	Township	Range	Lot Idn	Feet from the	North/South line	Feet from the	East/West line	County
10	33	26-S	29-E		300	SOUTH	2436	WEST	EDDY

**Bottom Hole Location If Different From Surface**

UL or lot No. C	Section 28	Township 26-S	Range 29-E	Lot Idn	Feet from the 200	North/South line NORTH	Feet from the 2166	East/West line WEST	County EDDY
Dedicated Acres 927.09	Joint or Infill	Consolidation Code		Order No.					

NO ALLOWABLE WILL BE ASSIGNED TO THIS COMPLETION UNTIL ALL INTERESTS HAVE BEEN CONSOLIDATED  
OR A NON-STANDARD UNIT HAS BEEN APPROVED BY THE DIVISION



Sec. 33 Lot 5: 45.9 Lot 6: 45.94 Lot 7: 46.05 Lot 8: 46.09 Lot 9: 25.35 Lot 10: 25.64 Lot 11: 25.92 Lot 12: 26.2