

District I
1625 N. French Dr., Hobbs, NM 88240
Phone: (505) 393-6161 Fax: (505) 393-0720
District II
811 S. First St., Artesia, NM 88210
Phone: (505) 748-1283 Fax: (505) 748-9720
District III
1000 Rio Brazos Road, Aztec, NM 87410
Phone: (505) 334-6178 Fax: (505) 334-6170
District IV
1220 S. St. Francis Dr., Santa Fe, NM 87505
Phone: (505) 476-3460 Fax: (505) 476-3462

State of New Mexico
Energy, Minerals & Natural Resources Department
OIL CONSERVATION DIVISION
1220 South St. Francis Dr.
Santa Fe, NM 87505

Form C-102
Revised August 1, 2011
Submit one copy to appropriate
District Office

☒ AMENDED REPORT
AS-DRILLED

WELL LOCATION AND ACREAGE DEDICATION PLAT

API Number 30-015-44518		Pool Code 60660	Pool Name TURKEY TRACK; BONE SPRING
Property Code 318404	Property Name TURKEY TRACK "4-3" STATE		Well Number 24H
OGRID No. 320	Operator Name OXY USA WTP LP		Elevation 3404.8'

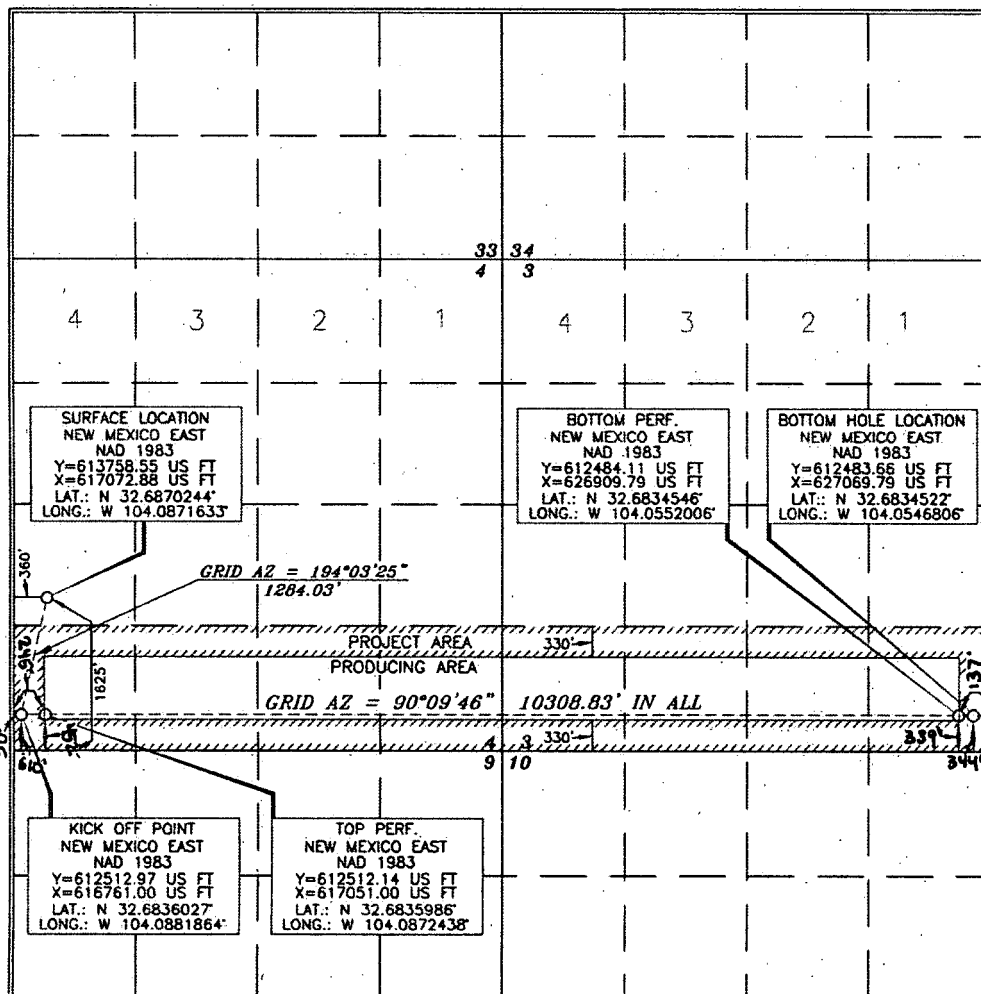
Surface Location

UL or lot no.	Section	Township	Range	Lot Idn	Feet from the	North/South line	Feet from the	East/West line	County
L	4	19 SOUTH	29 EAST, N.M.P.M.		1625'	SOUTH	360'	WEST	EDDY

Bottom Hole Location If Different From Surface

UL or lot no.	Section	Township	Range	Lot Idn	Feet from the	North/South line	Feet from the	East/West line	County
P	3	19 SOUTH	29 EAST, N.M.P.M.		344'	SOUTH	20'	EAST	EDDY
Dedicated Acres 320	Joint or Infill	Consolidation Code	Order No.						

No allowable will be assigned to this completion until all interests have been consolidated or a non-standard unit has been approved by the division.



OPERATOR CERTIFICATION

I hereby certify that the information contained herein is true and complete to the best of my knowledge and belief, and that this organization either owns a working interest or unleased mineral interest in the land including the proposed bottom hole location or has a right to drill this well at this location pursuant to a contract with an owner of such a mineral or working interest, or to a voluntary pooling agreement or a compulsory pooling order heretofore entered by the division.

Signature: *Leslie Reeves* Date: **07/26/2019**
Printed Name: **LESLIE REEVES**
E-mail Address: **LESLIE_REEVES@OXY.COM**

SURVEYOR CERTIFICATION

I hereby certify that the well location shown on this plat was plotted from the results of actual surveys made by me or under my supervision and that the same is true and correct to the best of my belief.

Signature and Seal: *Jerry J. As...* Date of Survey: **JULY 12, 2017**
Professional Surveyor: **15079**

Certificate Number: **15079**