

District I  
1625 N. French Dr., Hobbs, NM 88240  
Phone: (575) 393-6161 Fax: (575) 393-0720  
District II  
811 S. First St., Artesia, NM 88210  
Phone: (575) 748-1283 Fax: (575) 748-9720  
District III  
1000 Rio Brazos Road, Aztec, NM 87410  
Phone: (505) 334-6178 Fax: (505) 334-6170  
District IV  
1220 S. St. Francis Dr., Santa Fe, NM 87505  
Phone: (505) 476-3460 Fax: (505) 476-3462

State of New Mexico  
Energy, Minerals & Natural Resources Department  
OIL CONSERVATION DIVISION  
1220 South St. Francis Dr.  
Santa Fe, NM 87505

Form C-102  
Revised August 1, 2011  
Submit one copy to appropriate  
District Office

☐ AMENDED REPORT

WELL LOCATION AND ACREAGE DEDICATION PLAT

AS DRILLED

<sup>1</sup> API Number 30-015-45028	<sup>2</sup> Pool Code 96718	<sup>3</sup> Pool Name Loco Hills; Glorieta - Yeso
<sup>4</sup> Property Code 313982	<sup>5</sup> Property Name HOBGOBLIN 7 FEDERAL COM	<sup>6</sup> Well Number 13H
<sup>7</sup> OGRID NO. 229137	<sup>8</sup> Operator Name COG OPERATING, LLC	<sup>9</sup> Elevation 3673'

<sup>10</sup> Surface Location									
UL or lot no.	Section	Township	Range	Lot Idn	Feet from the	North/South line	Feet From the	East/West line	County
E	8	17S	30E		1650	NORTH	1	WEST	EDDY

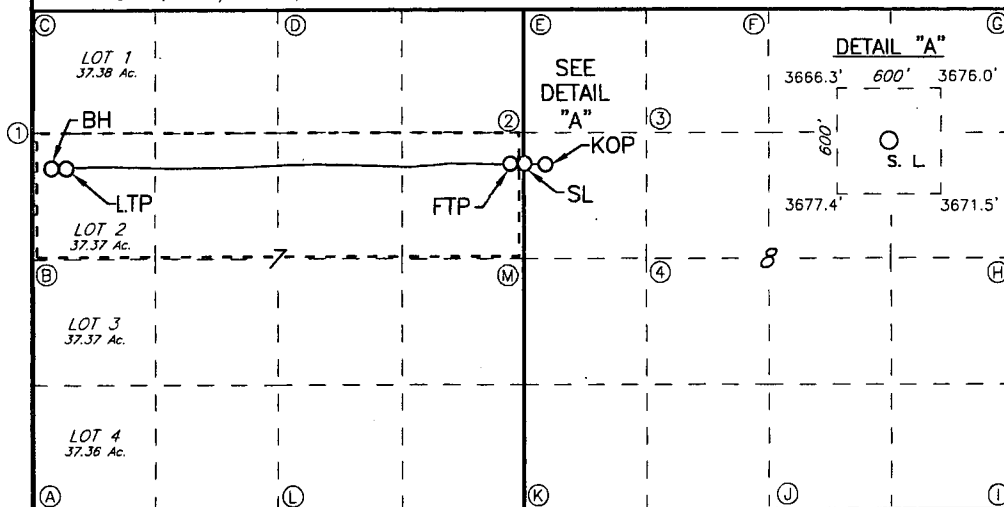
<sup>11</sup> Bottom Hole Location If Different From Surface									
UL or lot no.	Section	Township	Range	Lot Idn	Feet from the	North/South line	Feet from the	East/West line	County
2	7	17S	30E		1662	NORTH	119	WEST	EDDY

<sup>12</sup> Dedicated Acres 157.37	<sup>13</sup> Joint or Infill	<sup>14</sup> Consolidation Code	<sup>15</sup> Order No.
---	-------------------------------	----------------------------------	-------------------------

No allowable will be assigned to this completion until all interest have been consolidated or a non-standard unit has been approved by the division.

<b>16</b> <u>GEODETIC DATA</u> NAD 83 GRID - NM EAST <u>SURFACE LOCATION (SL)</u> 1650'-FNL/1'-FWL (SEC. 8) N 673770.4 - E 642855.0 LAT: 32.8517819° N LONG: 104.0027530° W LAT: 32°51'06.4150" N LONG: 104°00'09.9111" W <u>KICK OFF POINT (KOP)</u> 1660'-FNL/238'-FWL (SEC. 8) N 673760.7 - E 643091.9 LAT: 32.8517532° N LONG: 104.0019819° W LAT: 32°51'06.3117" N LONG: 104°00'07.1348" W MD = 4,037.00 / TVD = 4,024.05 <u>FIRST TAKE POINT (FTP)</u> 1662'-FNL/125'-FWL (SEC. 7) N 673757.6 - E 642728.6 LAT: 32.8517478° N LONG: 104.0031647° W LAT: 32°51'06.2922" N LONG: 104°00'11.3928" W MD = 4,685.00 / TVD = 4,516.01 <u>LAST TAKE POINT (LTP)</u> 1655'-FNL/254'-FWL (SEC. 7) N 673734.5 - E 637910.3 LAT: 32.8517247° N LONG: 104.0188549° W LAT: 32°51'06.2091" N LONG: 104°01'07.8778" W MD = 9,516.00 / TVD = 4,485.87 <u>BOTTOM HOLE (BH)</u> 1662'-FNL/119'-FWL (SEC. 7) N 673727.3 - E 637775.6 LAT: 32.8517062° N LONG: 104.0192939° W LAT: 32°51'06.1422" N LONG: 104°01'09.4580" W MD = 9,651.00 / TVD = 4,483.33	<u>CORNER DATA</u> NAD 83 GRID - NM EAST A: FOUND BRASS CAP "1914" N 670118.1 - E 637673.2 B: FOUND BRASS CAP "1914" N 672751.6 - E 637657.6 C: FOUND BRASS CAP "1914" N 675387.8 - E 637653.6 D: FOUND BRASS CAP "1916" N 675403.7 - E 640208.3 E: FOUND BRASS CAP "1916" N 675419.9 - E 642848.2 F: FOUND BRASS CAP "1916" N 675428.2 - E 645488.7 G: FOUND BRASS CAP "1916" N 675436.4 - E 648128.9	H: FOUND BRASS CAP "1916" N 672796.7 - E 648137.7 I: FOUND BRASS CAP "1916" N 670156.3 - E 648146.2 J: FOUND BRASS CAP "1916" N 670148.2 - E 645506.1 K: FOUND BRASS CAP "1916" N 670140.1 - E 642866.3 L: FOUND BRASS CAP "1916" N 670128.3 - E 640226.3 M: FOUND BRASS CAP "1916" N 672779.6 - E 642857.5 <u>CALCULATED POINTS</u> 1: N 674069.7 - E 637655.6 2: N 674099.8 - E 642852.9 3: N 674103.9 - E 644173.0 4: N 672783.8 - E 644177.5
---	---	--

<b>17 OPERATOR CERTIFICATION</b>	
I hereby certify that the information contained herein is true and complete to the best of my knowledge and belief, and that this organization either owns a working interest or unleased mineral interest in the land including the proposed bottom hole location or has a right to drill this well at this location pursuant to a contract with an owner of such a mineral or working interest, or to a voluntary pooling agreement or a compulsory pooling order heretofore entered by the division.	
Signature Dana King	Date 12/19/2018
Printed Name dking@concho.com	
E-mail Address	



<b>18 SURVEYOR CERTIFICATION</b>	
I hereby certify that the well location shown on this plat was plotted from field notes of actual surveys made by me or under my supervision, and that the same is true and correct to the best of my belief.	
9-20-2017	
Date of Survey	
Signature and Seal of Professional Surveyor	
19680	
Certificate Number	
12/17/18 AS DRILL	
LS1709613D2	