

District I  
1625 N. French Dr., Hobbs, NM 88240  
Phone: (575) 393-6161 Fax: (575) 393-0720  
District II  
811 S. First St., Artesia, NM 88210  
Phone: (575) 748-1283 Fax: (575) 748-9720  
District III  
1000 Rio Brazos Road, Aztec, NM 87410  
Phone: (505) 334-6178 Fax: (505) 334-6170  
District IV  
1220 S. St. Francis Dr., Santa Fe, NM 87505  
Phone: (505) 476-3460 Fax: (505) 476-3462

State of New Mexico  
Energy, Minerals & Natural Resources  
Department  
OIL CONSERVATION DIVISION  
1220 South St. Francis Dr.  
Santa Fe, NM 87505

FORM C-102  
Revised August 1, 2011  
Submit one copy to appropriate  
District Office  
☐ AMENDED REPORT

WELL LOCATION AND ACREAGE DEDICATION PLAT

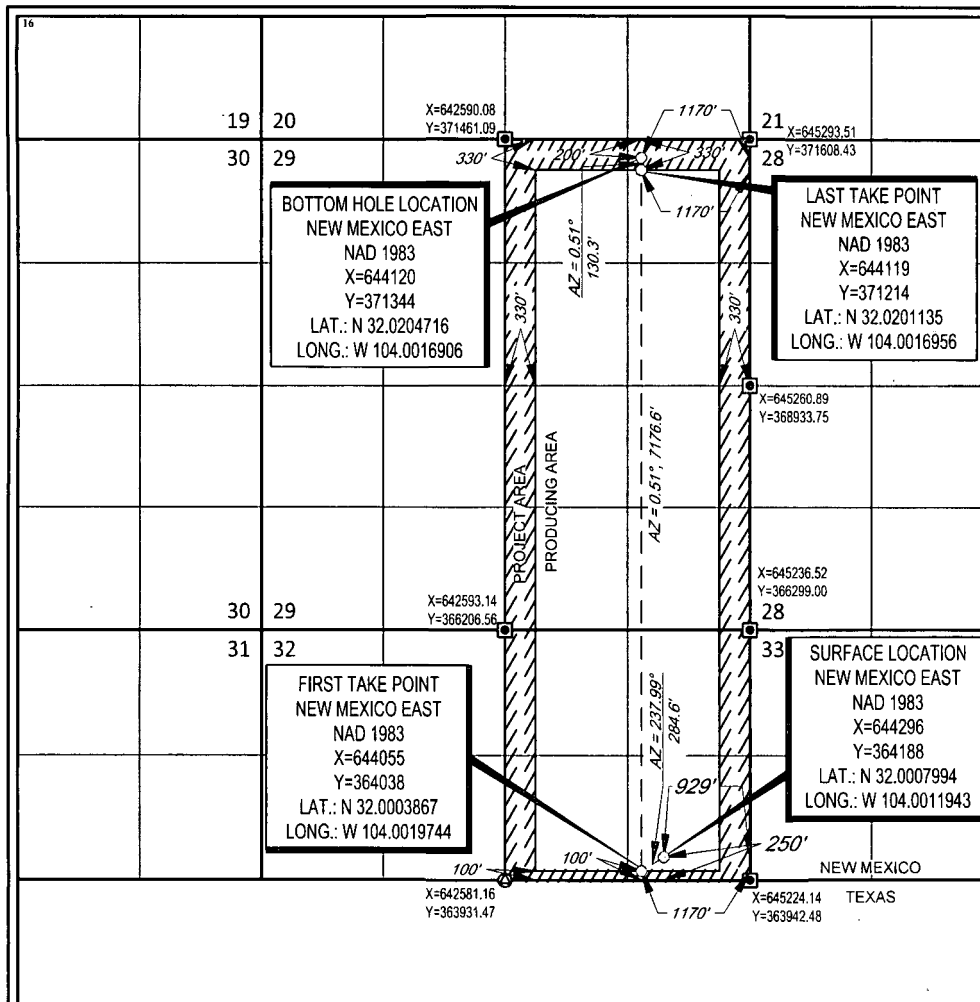
<sup>1</sup> API Number 30-015-46222	<sup>2</sup> Pool Code 98220	<sup>3</sup> Pool Name PURPLE SAGE; WOLFCAMP
<sup>4</sup> Property Code 326031	<sup>5</sup> Property Name MONEY GRAHAM FED COM	<sup>6</sup> Well Number 246H
<sup>7</sup> GRID No. 372043	<sup>8</sup> Operator Name TAP ROCK OPERATING, LLC.	<sup>9</sup> Elevation 2866'

<sup>10</sup> Surface Location									
UL or lot no.	Section	Township	Range	Lot Idn	Feet from the	North/South line	Feet from the	East/West line	County
4	32	26-S	29-E	-	250'	SOUTH	929'	EAST	EDDY

<sup>11</sup> Bottom Hole Location If Different From Surface									
UL or lot no.	Section	Township	Range	Lot Idn	Feet from the	North/South line	Feet from the	East/West line	County
A	29	26-S	29-E	-	200'	NORTH	1170'	EAST	EDDY

<sup>12</sup> Dedicated Acres 445.60	<sup>13</sup> Joint or Infill	<sup>14</sup> Consolidation Code	<sup>15</sup> Order No.
---	-------------------------------	----------------------------------	-------------------------

No allowable will be assigned to this completion until all interests have been consolidated or a non-standard unit has been approved by the division.



<sup>17</sup> OPERATOR CERTIFICATION	
I hereby certify that the information contained herein is true and complete to the best of my knowledge and belief, and that this organization either owns a working interest or unleased mineral interest in the land including the proposed bottom hole location or has a right to drill this well at this location pursuant to a contract with an owner of such a mineral or working interest, or to a voluntary pooling agreement or a compulsory pooling order heretofore entered by the division.	
Signature <i>Cory Walk</i>	Date 01-16-19
Printed Name Cory Walk	
E-mail Address cory@permitswest.com	
<sup>18</sup> SURVEYOR CERTIFICATION	
I hereby certify that the well location shown on this plat was plotted from field notes of actual surveys made by me or under my supervision, and that the same is true to the best of my belief.	
Date of Survey 12/12/2018	Signature and Seal of Professional Surveyor <i>Michael Brown</i>
Certificate Number 18329	

20 8-13-19

**Operator Name:** TAP ROCK OPERATING LLC

**Well Name:** MONEY GRAHAM FED COM

**Well Number:** 246H

	NS-Foot	NS Indicator	EW-Foot	EW Indicator	Twsp	Range	Section	Aliquot/Lot/Tract	Latitude	Longitude	County	State	Meridian	Lease Type	Lease Number	Elevation	MD	TVD
EXIT Leg #1	200	FNL	117 0	FEL	26S	29E	29	Aliquot NENE	32.02047 16	- 104.0016 906	EDD Y	NEW MEXI CO	NEW MEXI CO	F	NMNM 138607	- 794 4	182 10	108 10
BHL Leg #1	200	FNL	117 0	FEL	26S	29E	29	Aliquot NENE	32.02047 16	- 104.0016 906	EDD Y	NEW MEXI CO	NEW MEXI CO	F	NMNM 138607	- 794 4	182 10	108 10