

District I
1625 N. French Dr., Hobbs, NM 88240
Phone: (575) 393-6161 Fax: (575) 393-0722
District II
811 S. First St., Artesia, NM 88210
Phone: (575) 748-1283 Fax: (575) 748-9720
District III
1000 Rio Brazos Road, Aztec, NM 87410
Phone: (505) 334-6178 Fax: (505) 334-6179
District IV
1220 S. St. Francis Dr., Santa Fe, NM 87505
Phone: (505) 476-3460 Fax: (505) 476-3461

State of New Mexico
Energy, Minerals & Natural Resources
Department
OIL CONSERVATION DIVISION
1220 South St. Francis Dr.
Santa Fe, NM 87505

FORM C-102

Revised August 1, 2011

Submit one copy to appropriate

District Office

☐ AMENDED REPORT

WELL LOCATION AND ACREAGE DEDICATION PLAT

¹ API Number 30-015-44700	² Pool Code 98220	³ Pool Name PURPLE SAGE; WOLFCAMP (GAS)
⁴ Property Code 320798	⁵ Property Name CASEY JONES 16 FED COM	⁶ Well Number #703H
⁷ OGRID No. 7377	⁸ Operator Name EOG RESOURCES, INC.	⁹ Elevation 3034'

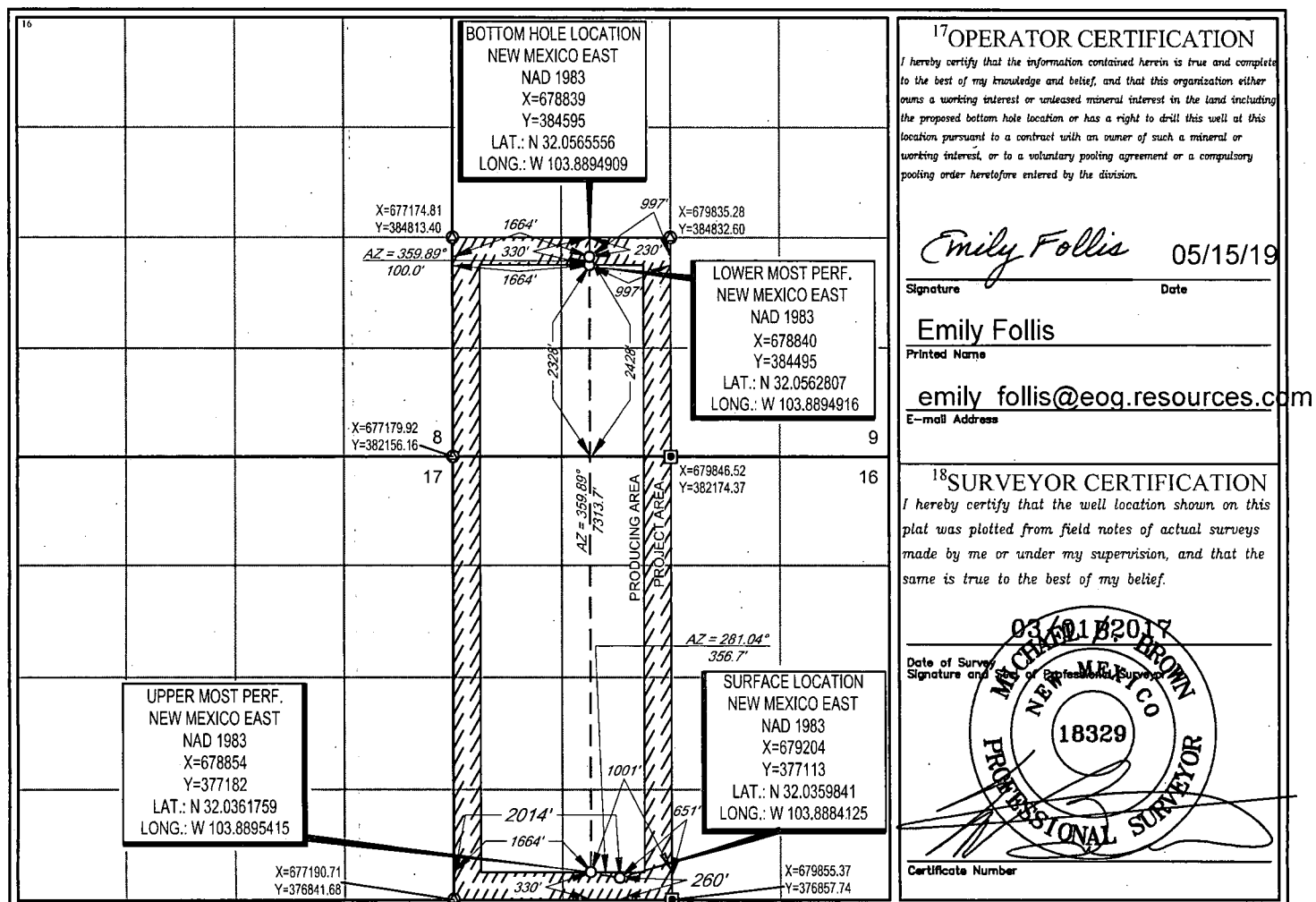
¹⁰Surface Location

UL or lot no.	Section	Township	Range	Lot Idn	Feet from the	North/South line	Feet from the	East/West line	County
N	16	26-S	30-E	-	260'	SOUTH	2014'	WEST	EDDY

UL or lot no.	Section	Township	Range	Lot Idn	Feet from the	North/South line	Feet from the	East/West line	County
K	9	26-S	30-E	-	2428'	SOUTH	1664'	WEST	EDDY

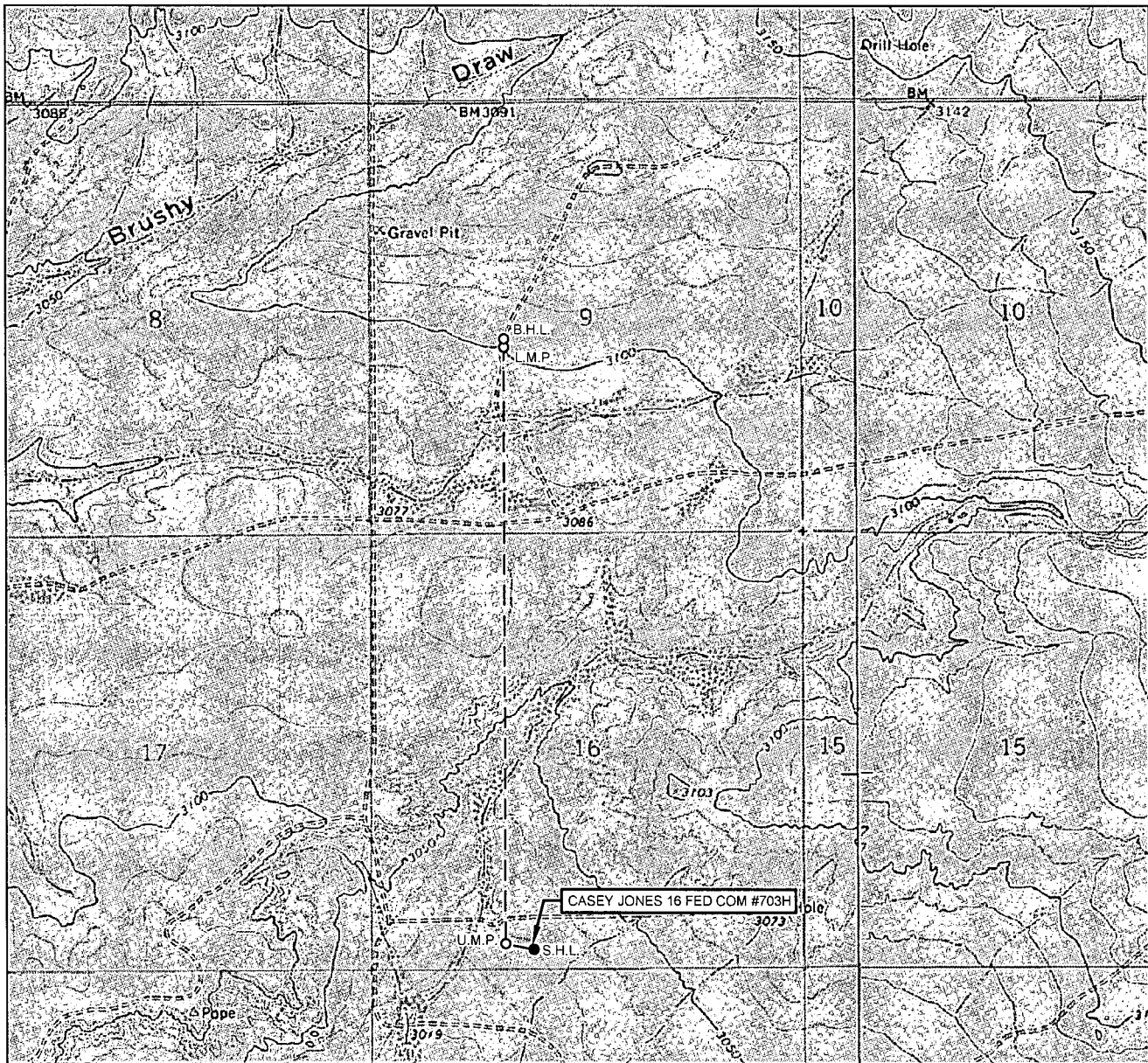
¹² Dedicated Acres 480.00	¹³ Joint or Infill	¹⁴ Consolidation Code	¹⁵ Order No.
---	-------------------------------	----------------------------------	-------------------------

No allowable will be assigned to this completion until all interests have been consolidated or a non-standard unit has been approved by the division.



Rw 8-23-18

LOCATION & ELEVATION VERIFICATION MAP



LEASE NAME & WELL NO.: CASEY JONES 16 FED COM #703H

SECTION 16 TWP 26-S RGE 30-E SURVEY N.M.P.M.
 COUNTY EDDY STATE NM ELEVATION 3034'
 DESCRIPTION 260' FSL & 2014' FWL

LATITUDE N 32.0359841 LONGITUDE W 103.8884125



SCALE: 1" = 2000'
 0' 1000' 2000'

THIS EASEMENT/SERVITUDE LOCATION SHOWN HEREON HAS BEEN SURVEYED ON THE GROUND UNDER MY SUPERVISION AND PREPARED ACCORDING TO THE EVIDENCE FOUND AT THE TIME OF SURVEY, AND DATA PROVIDED BY EOG RESOURCES, INC. THIS CERTIFICATION IS MADE AND LIMITED TO THOSE PERSONS OR ENTITIES SHOWN ON THE FACE OF THIS PLAT AND IS NON-TRANSFERABLE. THIS SURVEY IS CERTIFIED FOR THIS TRANSACTION ONLY.

ALL BEARINGS, DISTANCES, AND COORDINATE VALUES CONTAINED HEREON ARE GRID BASED UPON THE NEW MEXICO COORDINATE SYSTEM OF 1983, EAST ZONE, U.S. SURVEY FEET.



TOPOGRAPHIC
 LOYALTY INNOVATION LEGACY

1400 EVERMAN PARKWAY, Ste. 146 • FT. WORTH, TEXAS 76140
 TELEPHONE: (817) 744-7512 • FAX (817) 744-7554
 2803 NORTH BIC SPRING • MIDLAND, TEXAS 79705
 TELEPHONE: (432) 682-1653 OR (800) 767-1653 • FAX (432) 682-1743
 WWW.TOPOGRAPHIC.COM

EXHIBIT 2



DETAIL VIEW
SCALE: 1" = 500'

25S-30E

26S-29E

SEE
DETAIL

26S-30E



CASEY JONES 16 FED COM #703H

SECTION 16 TWP 26-S , RGE 30-E SURVEY N.M.P.M.

COUNTY EDDY STATE NM

DESCRIPTION	260' FSL & 2014' FWL

DISTANCE & DIRECTION


FROM INT. OF US-285 & CR. 720, GO SOUTH ON US-285 ±12.6 MILES, THENCE NORTHEAST (LEFT) ON WHITEHORN RD. ±4.1 MILES, THENCE EAST (LEFT) ON PIPELINE RD. ±2.8 MILES, THENCE SOUTH (RIGHT) ON TARBRUSH RD. ±4.2 MILES, THENCE SOUTH (RIGHT) ON LEASE RD. ±1.4 MILES, THENCE CONTINUING ON A PROPOSED ACCESS ROAD ±360 FEET, TO A POINT ±290 FEET SOUTHEAST OF THE LOCATION.

THIS EASEMENT/SERVITUDE LOCATION SHOWN HEREON HAS BEEN SURVEYED ON THE GROUND UNDER MY SUPERVISION AND PREPARED ACCORDING TO THE EVIDENCE FOUND AT THE TIME OF SURVEY, AND DATA PROVIDED BY EOG RESOURCES, INC. THIS CERTIFICATION IS MADE AND LIMITED TO THOSE PERSONS OR ENTITIES SHOWN ON THE FACE OF THIS PLAT AND IS NON-TRANSFERABLE. THIS SURVEY IS CERTIFIED FOR THIS TRANSACTION ONLY.

ALL BEARINGS, DISTANCES, AND COORDINATE VALUES CONTAINED HEREON ARE GRID BASED UPON THE NEW MEXICO COORDINATE SYSTEM OF 1983, EAST ZONE, U.S. SURVEY FEET.



SCALE: 1" = 10000'



0' 5000' 10000'



TOPOGRAPHIC
LOYALTY INNOVATION LEGACY

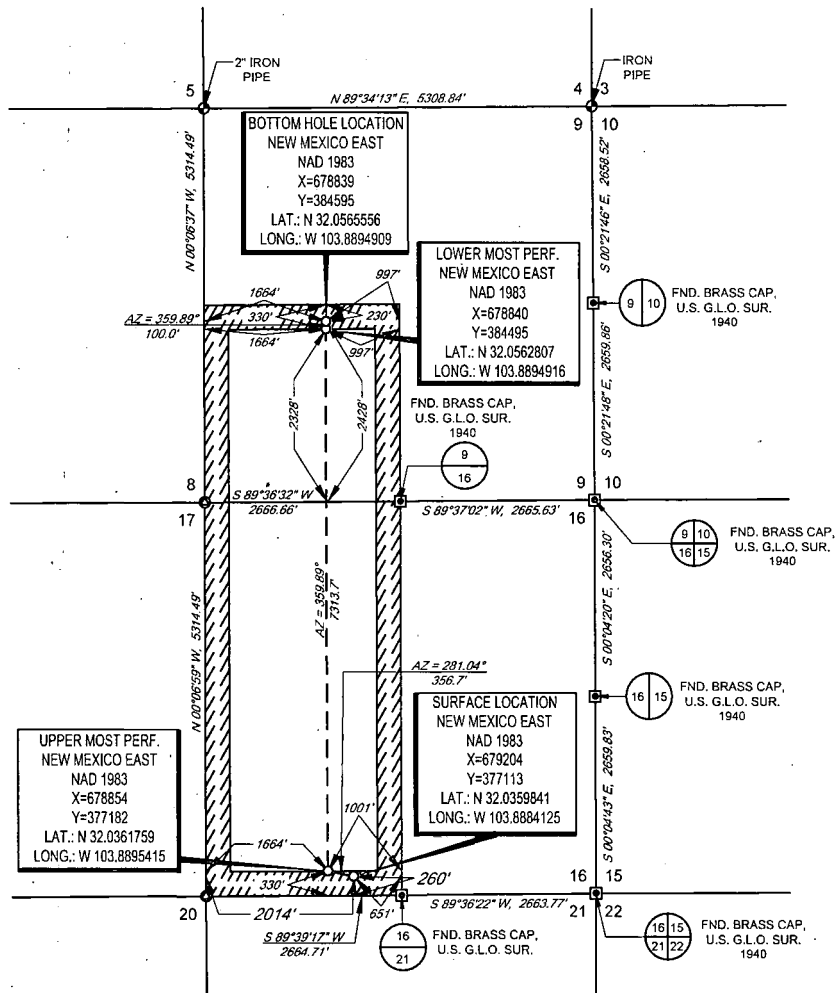
1400 EVERMAN PARKWAY, Ste. 146 • FT. WORTH, TEXAS 76140
TELEPHONE: (817) 744-7512 • FAX (817) 744-7554

2903 NORTH BIG SPRING • MIDLAND, TEXAS 79705
TELEPHONE: (432) 682-1653 OR (800) 767-1653 • FAX (432) 682-1743
WWW.TOPOGRAPHIC.COM



EXHIBIT 2A

SECTION 16, TOWNSHIP 26-S, RANGE 30-E, N.M.P.M.
EDDY COUNTY, NEW MEXICO



SCALE: 1" = 2000'
0' 1000' 2000'

LEASE NAME & WELL NO.: CASEY JONES 16 FED COM #703H

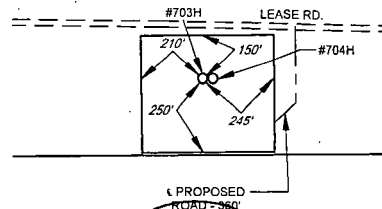
SECTION 16 TWP 26-S RGE 30-E SURVEY N.M.P.M.
COUNTY EDDY STATE NM
DESCRIPTION 260' FSL & 2014' FWL

DISTANCE & DIRECTION

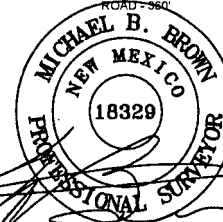
FROM INT. OF US-285 & CR. 720, GO SOUTH ON US-285 ±12.6 MILES,
THENCE NORTHEAST (LEFT) ON WHITEHORN RD. ±4.1 MILES, THENCE
EAST (LEFT) ON PIPELINE RD. ±2.8 MILES, THENCE SOUTH (RIGHT) ON
TARBRUSH RD. ±4.2 MILES, THENCE SOUTH (RIGHT) ON LEASE RD. ±1.4
MILES, THENCE CONTINUING ON A PROPOSED ACCESS ROAD ±360
FEET, TO A POINT ±290 FEET SOUTHEAST OF THE LOCATION.

ALL BEARINGS, DISTANCES, AND COORDINATE VALUES CONTAINED HEREON ARE GRID
BASED UPON THE NEW MEXICO COORDINATE SYSTEM OF 1983, EAST ZONE, U.S. SURVEY
FEET.

THIS EASEMENT/SERVITUDE LOCATION SHOWN HEREON HAS BEEN SURVEYED ON THE GROUND
UNDER MY SUPERVISION AND PREPARED ACCORDING TO THE EVIDENCE FOUND AT THE TIME OF
SURVEY, AND DATA PROVIDED BY EOG RESOURCES, INC. THIS CERTIFICATION IS MADE AND LIMITED
TO THOSE PERSONS OR ENTITIES SHOWN ON THE FACE OF THIS PLAT AND IS NON-TRANSFERABLE.
THIS SURVEY IS CERTIFIED FOR THIS TRANSACTION ONLY.



DETAIL VIEW
SCALE: 1" = 500'



Michael Blake Brown, P.S. No. 18329
AUGUST 7, 2018



TOPOGRAPHIC
LOYALTY INNOVATION LEGACY

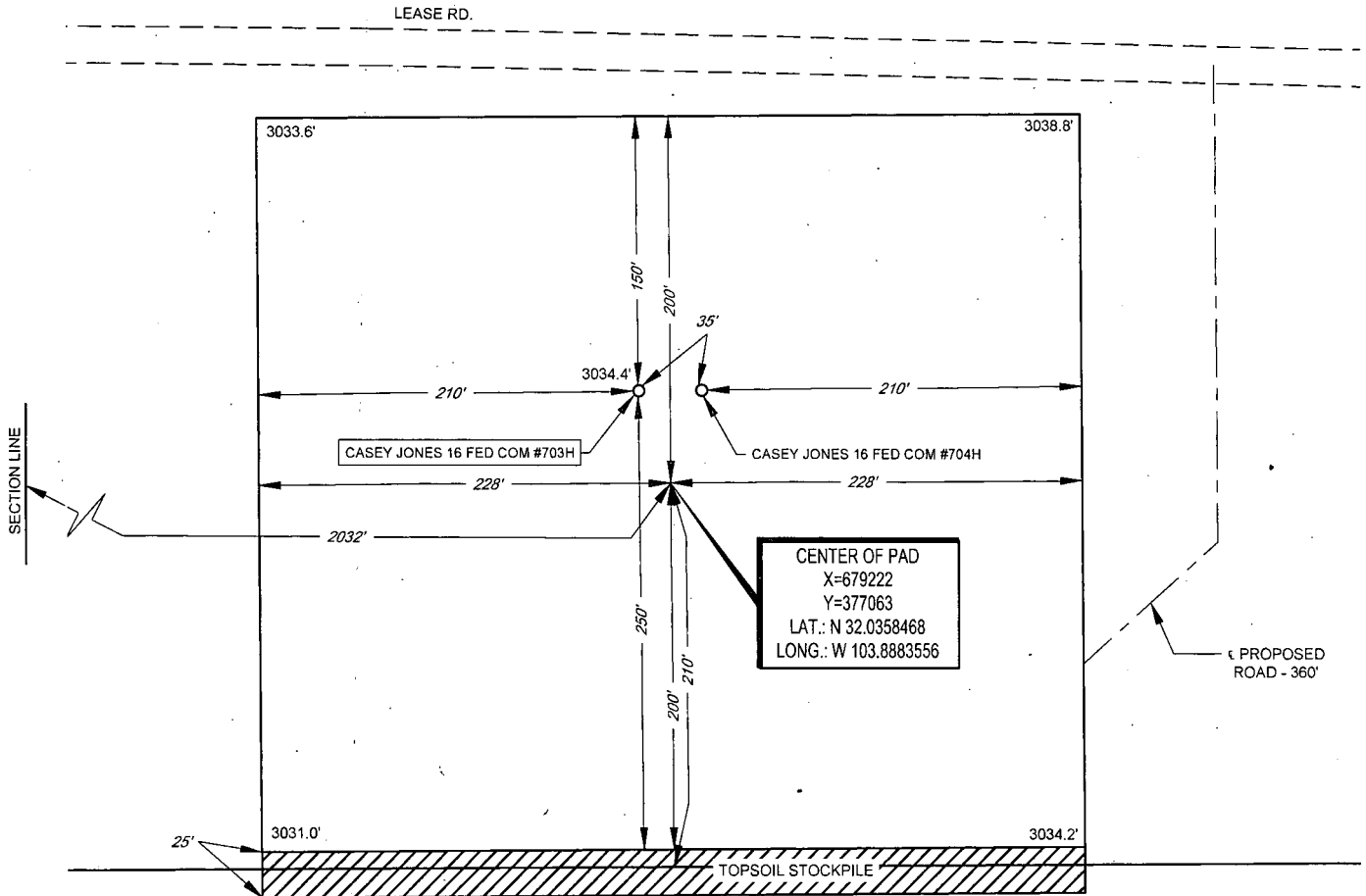
1400 EVERMAN PARKWAY, Ste. 146 • FT. WORTH, TEXAS 76140
TELEPHONE: (817) 744-7512 • FAX: (817) 744-7554
2903 NORTH BIG SPRING • MIDLAND, TEXAS 79705
TELEPHONE: (432) 682-1653 OR (800) 767-1653 • FAX: (432) 682-1743
WWW.TOPOGRAPHIC.COM



EXHIBIT 2B

SECTION 16, TOWNSHIP 26-S, RANGE 30-E, N.M.P.M.
EDDY COUNTY, NEW MEXICO

DETAIL VIEW
SCALE: 1" = 100'



LEASE NAME & WELL NO.: CASEY JONES 16 FED COM #703H
#703H LATITUDE N 32.0359841 #703H LONGITUDE W 103.8884125

CENTER OF PAD IS 210' FSL & 2032' FWL

LEGEND

== == == == EXISTING ROAD
--- SECTION LINE
- - - - - PROPOSED ROAD

ALL BEARINGS, DISTANCES, AND COORDINATE VALUES CONTAINED HEREON ARE GRID BASED
UPON THE NEW MEXICO COORDINATE SYSTEM OF 1983, EAST ZONE, U.S. SURVEY FEET.

THIS PROPOSED PAD SITE LOCATION SHOWN HEREON HAS BEEN SURVEYED ON THE GROUND UNDER
MY SUPERVISION AND PREPARED ACCORDING TO THE EVIDENCE FOUND AT THE TIME OF SURVEY,
AND DATA PROVIDED BY EOG RESOURCES, INC. THIS CERTIFICATION IS MADE AND LIMITED TO THOSE
PERSONS OR ENTITIES SHOWN ON THE FACE OF THIS PLAT, AND IS NON-TRANSFERABLE. THIS
SURVEY IS CERTIFIED FOR THIS TRANSACTION ONLY.

ORIGINAL DOCUMENT SIZE: 8.5" X 11"



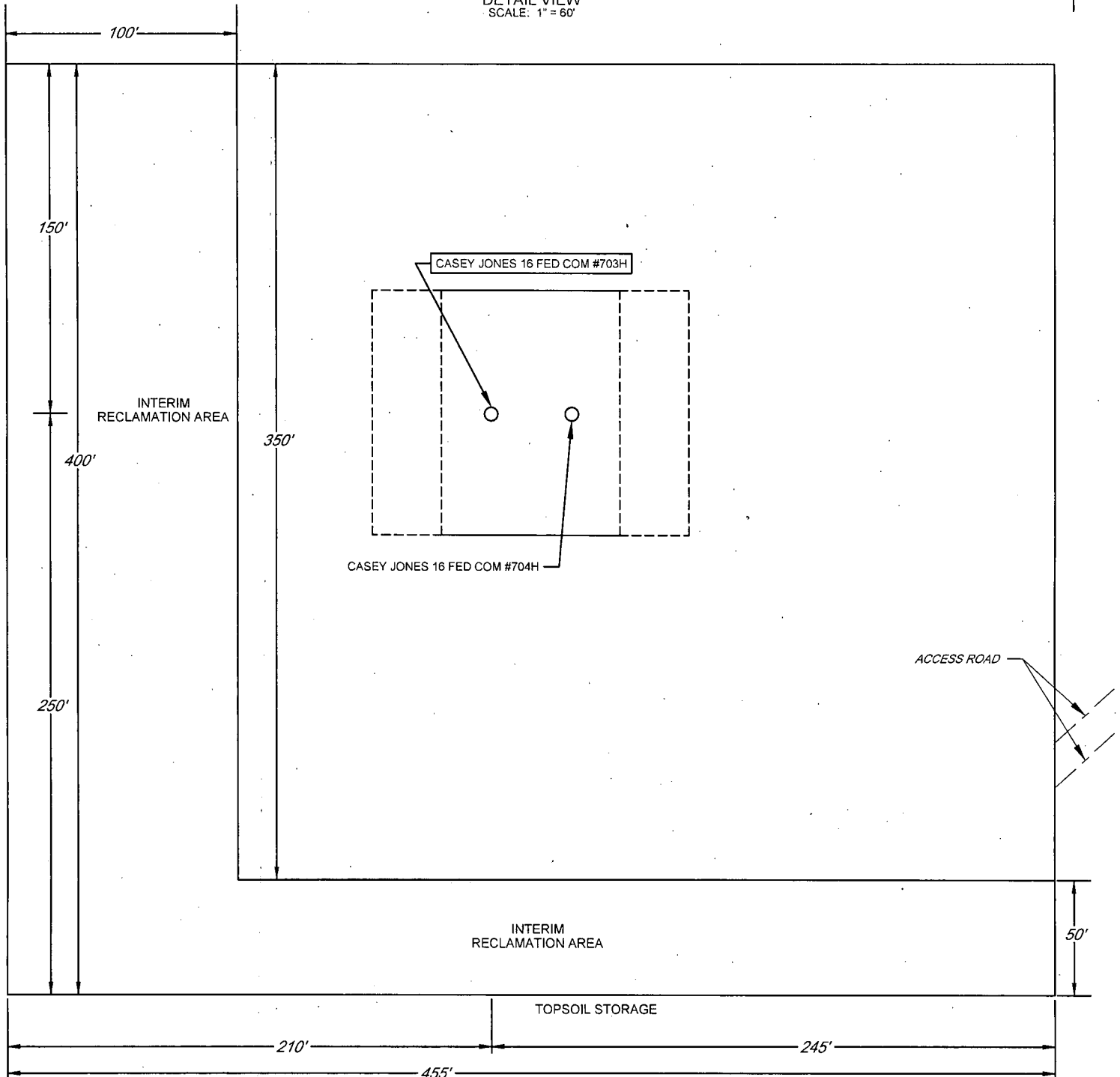
TOPOGRAPHIC
LOYALTY INNOVATION LEGACY

1400 EVERMAN PARKWAY, Ste. 146 • FT. WORTH, TEXAS 76140
TELEPHONE: (817) 744-7512 • FAX (817) 744-7554
2903 NORTH BIG SPRING • MIDLAND, TEXAS 79705
TELEPHONE: (432) 682-1653 OR (800) 767-1653 • FAX (432) 682-1743
WWW.TOPOGRAPHIC.COM

EXHIBIT 2C
RECLAMATION AND FACILITY DIAGRAM - PRODUCTION FACILITIES DIAGRAM

SECTION 16, TOWNSHIP 26-S, RANGE 30-E, N.M.P.M.
EDDY COUNTY, NEW MEXICO

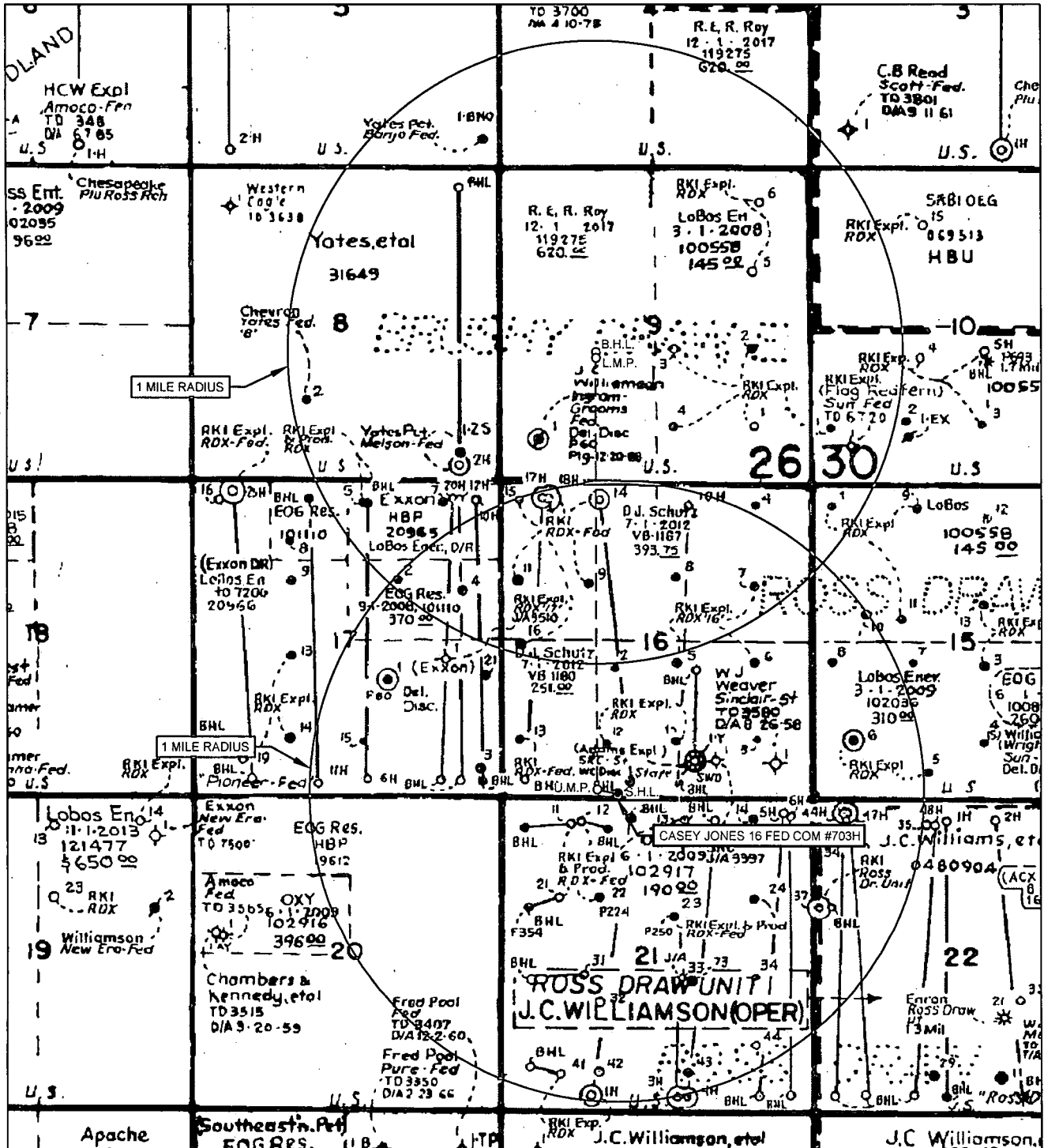
DETAIL VIEW
SCALE: 1" = 60'



LEASE NAME & WELL NO.: CASEY JONES 16 FED COM #703H
#703H LATITUDE N 32.0359841 #703H LONGITUDE W 103.8884125

EXHIBIT 3

SECTION 16, TOWNSHIP 26-S, RANGE 30-E, N.M.P.M.
EDDY COUNTY, NEW MEXICO



LEASE NAME & WELL NO.: CASEY JONES 16 FED COM #703H

#703H LATITUDE N 32.0359841

#703H LONGITUDE W 103.8884125

SCALE: NTS

ALL BEARINGS, DISTANCES, AND COORDINATE VALUES CONTAINED HEREON ARE GRID BASED UPON THE NEW MEXICO COORDINATE SYSTEM OF 1983, EAST ZONE, U.S. SURVEY FEET.

THIS EASEMENT/SERVITUDE LOCATION SHOWN HEREON HAS BEEN SURVEYED ON THE GROUND UNDER MY SUPERVISION AND PREPARED ACCORDING TO THE EVIDENCE FOUND AT THE TIME OF SURVEY, AND DATA PROVIDED BY EOG RESOURCES, INC. THIS CERTIFICATION IS MADE AND LIMITED TO THOSE PERSONS OR ENTITIES SHOWN ON THE FACE OF THIS PLAT AND IS NON-TRANSFERABLE. THIS SURVEY IS CERTIFIED FOR THIS TRANSACTION ONLY.



TOPOGRAPHIC
LOYALTY INNOVATION LEGACY

1400 EVERMAN PARKWAY, Ste. 146 • FT. WORTH, TEXAS 76140
TELEPHONE: (817) 744-7512 • FAX: (817) 744-7554
2903 NORTH BIG SPRING • MIDLAND, TEXAS 79705
TELEPHONE: (432) 682-1653 OR (800) 767-1653 • FAX: (432) 682-1743
WWW.TOPOGRAPHIC.COM