

DISTRICT I
1625 N. FRENCH DR., HOBBS, NM 88240

DISTRICT II
1301 W. GRAND AVENUE, ARTESIA, NM 88210

DISTRICT III
1000 RIO BRAZOS RD., AZTEC, NM 87410

DISTRICT IV
11980 S. ST. FRANCIS DR., SANTA FE, NM 87505

State of New Mexico
Energy, Minerals and Natural Resources Department

OIL CONSERVATION DIVISION
11980 SOUTH ST. FRANCIS DR.
Santa Fe, New Mexico 87505

Form C-102

Revised October 12, 2005

Submit to Appropriate District Office

State Lease - 4 Copies

Fee Lease - 3 Copies

WELL LOCATION AND ACREAGE DEDICATION PLAT

☐ AMENDED REPORT

API Number 30-015-	Pool Code 40350 40370	Property Name Loving; Brushy Canyon , East
Property Code 40350	Property Name 8808 JV-P PARDUE B	Well Number 7
OGRID No. 260297	Operator Name BTA OIL PRODUCERS LLC	Elevation 2990'

Surface Location

UL or lot No. L	Section 11	Township 23-S	Range 28-E	Lot Idn	Feet from the 1980	North/South line SOUTH	Feet from the 330	East/West line WEST	County EDDY
--------------------	---------------	------------------	---------------	---------	-----------------------	---------------------------	----------------------	------------------------	----------------

Bottom Hole Location If Different From Surface

UL or lot No.	Section	Township	Range	Lot Idn	Feet from the	North/South line	Feet from the	East/West line	County
Dedicated Acres		Joint or Infill		Consolidation Code		Order No.			

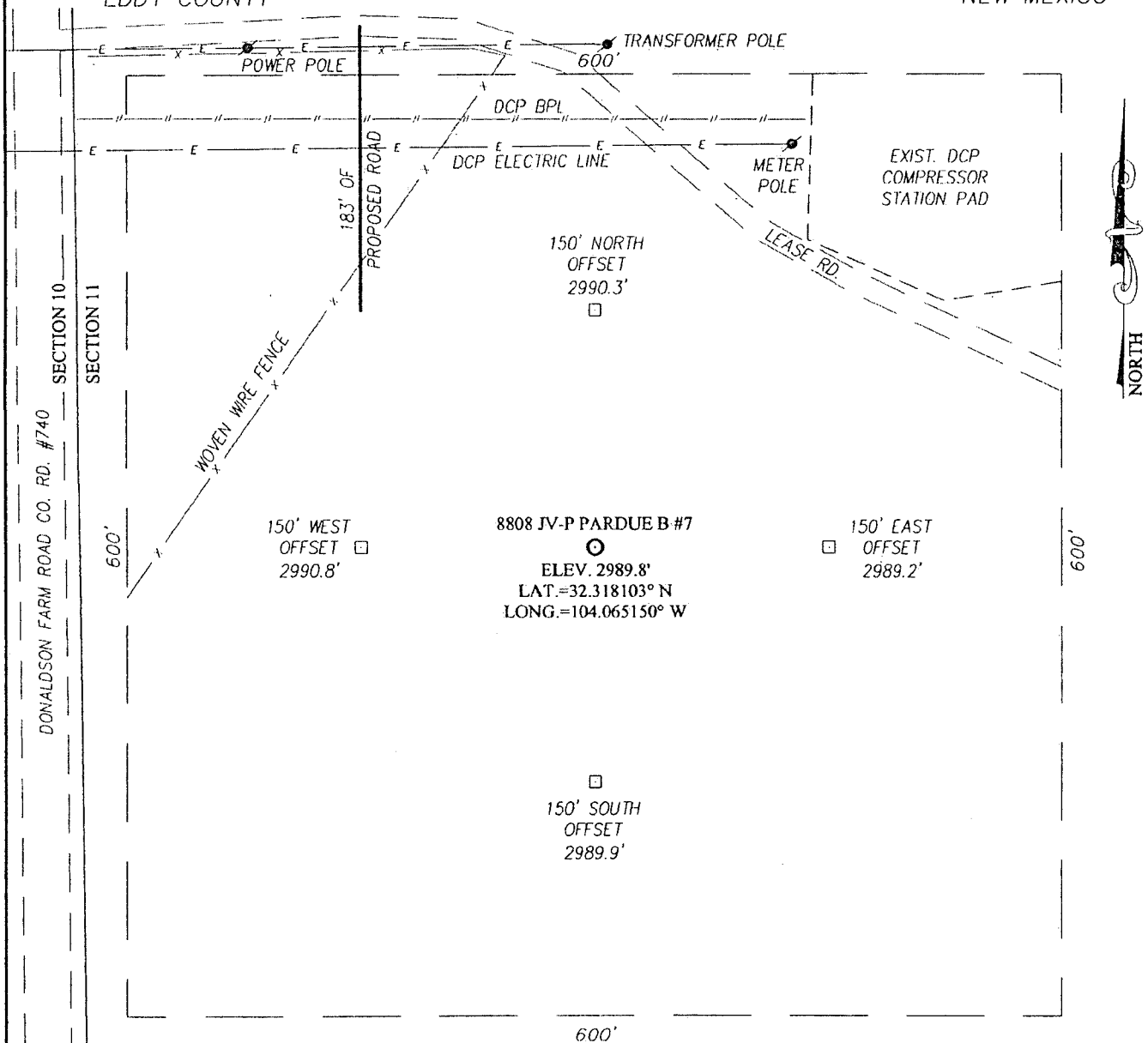
NO ALLOWABLE WILL BE ASSIGNED TO THIS COMPLETION UNTIL ALL INTERESTS HAVE BEEN CONSOLIDATED
OR A NON-STANDARD UNIT HAS BEEN APPROVED BY THE DIVISION

		<p>GEODETIC COORDINATES NAD 27 NME</p> <p>SURFACE LOCATION Y=479545.9 N X=582847.3 E</p> <p>LAT.=32.318103° N LONG.=104.065150° W</p>		<p>OPERATOR CERTIFICATION</p> <p>I hereby certify that the information herein is true and complete to the best of my knowledge and belief, and that this organization either owns a working interest or unleased mineral interest in the land including the proposed bottom hole location or has a right to drill this well at this location pursuant to a contract with an owner of such mineral or working interest, or to a voluntary pooling agreement or a compulsory pooling order heretofore entered by the division.</p> <p><i>Pam Inskeep</i> 12/15/10 Signature Date</p> <p>Pam Inskeep Printed Name</p>	
				<p>SURVEYOR CERTIFICATION</p> <p>I hereby certify that the well location shown on this plat was plotted from field notes of actual surveys made by me or under my supervision, and that the same is true and correct to the best of my belief.</p> <p>SEPTEMBER 17, 2010 Date Surveyed</p> <p>Signature & Seal of Professional Surveyor <i>Ronald J. Eidson</i> 9/23/2010</p> <p>Certificate No. GARY G. EIDSON 12641 RONALD J. EIDSON 3239</p>	

RW 8-29-19

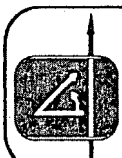
SECTION 11, TOWNSHIP 23 SOUTH, RANGE 28 EAST, N.M.P.M.

EDDY COUNTY NEW MEXICO



DIRECTIONS TO LOCATION

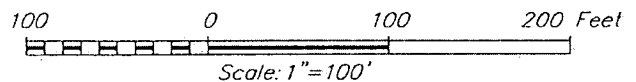
FROM THE INTERSECTION OF STATE HIGHWAY #31 AND COUNTY ROAD #740 (DONALDSON FARM ROAD), GO NORTH ON COUNTY ROAD #740 APPROX. 0.4 MILES. TURN RIGHT AND GO EAST APPROX. 200 FEET. TURN RIGHT AT PROPOSED ROAD SURVEY AND GO SOUTH APPROX. 183 FEET. THIS LOCATION STAKE IS APPROX. 212 FEET SOUTHEAST.



PROVIDING SURVEYING SERVICES
SINCE 1946

JOHN WEST SURVEYING COMPANY

412 N. DAL PASO
HOBBS, N.M. 88240
(575) 393-3117

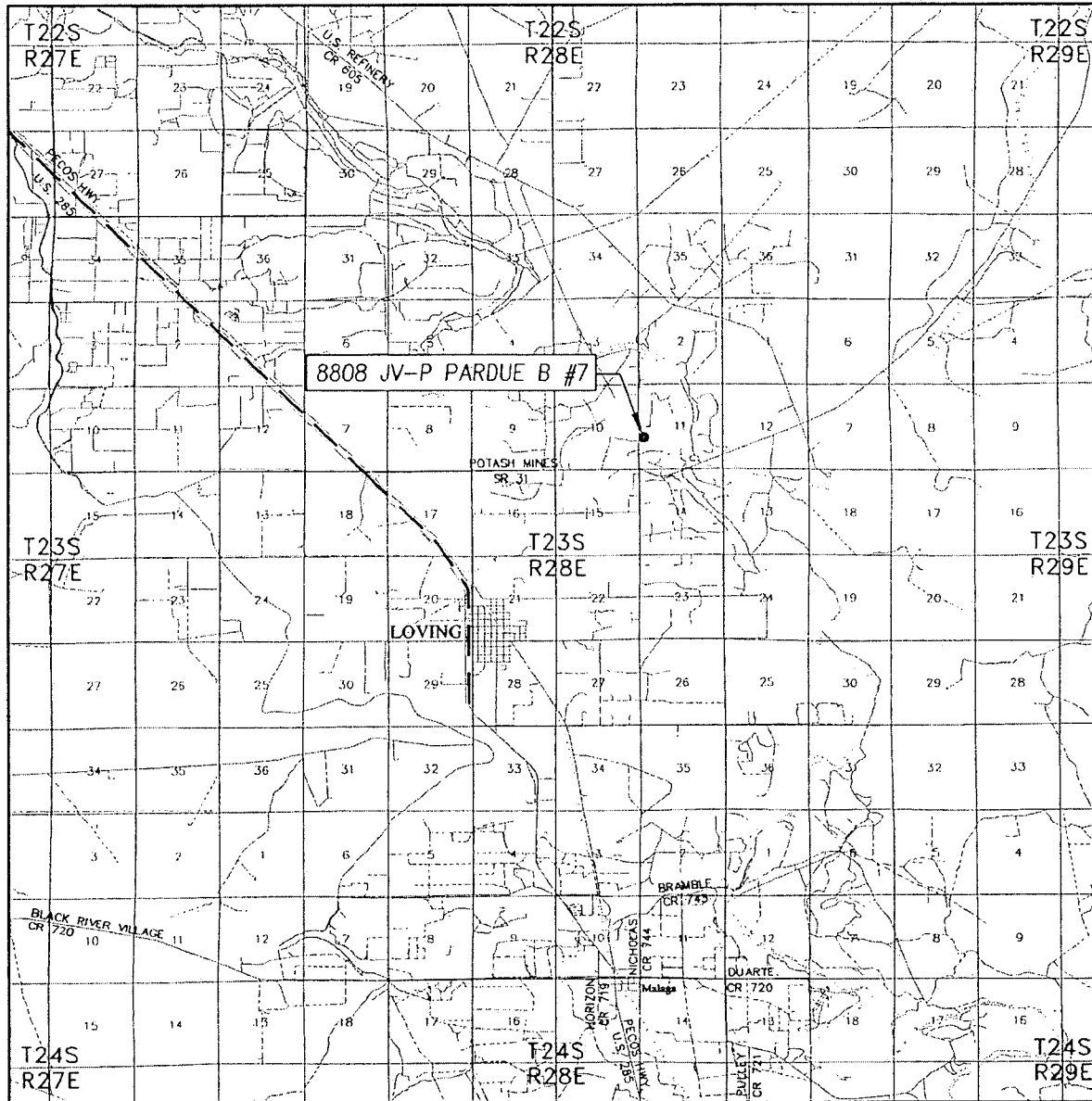


BTA OIL PRODUCERS

8808 JV-P PARDUE B #7 WELL
LOCATED 1980 FEET FROM THE SOUTH LINE
AND 330 FEET FROM THE WEST LINE OF SECTION 11,
TOWNSHIP 23 SOUTH, RANGE 28 EAST, N.M.P.M.,
EDDY COUNTY, NEW MEXICO


Survey Date: 9/17/10	Sheet 1 of 1 Sheets
W.O. Number: 10.11.1344	Dr. By: DSS
Date: 9/22/10	Rel. W.O.: 10111344
	Scale: 1"=100'

VICINITY MAP



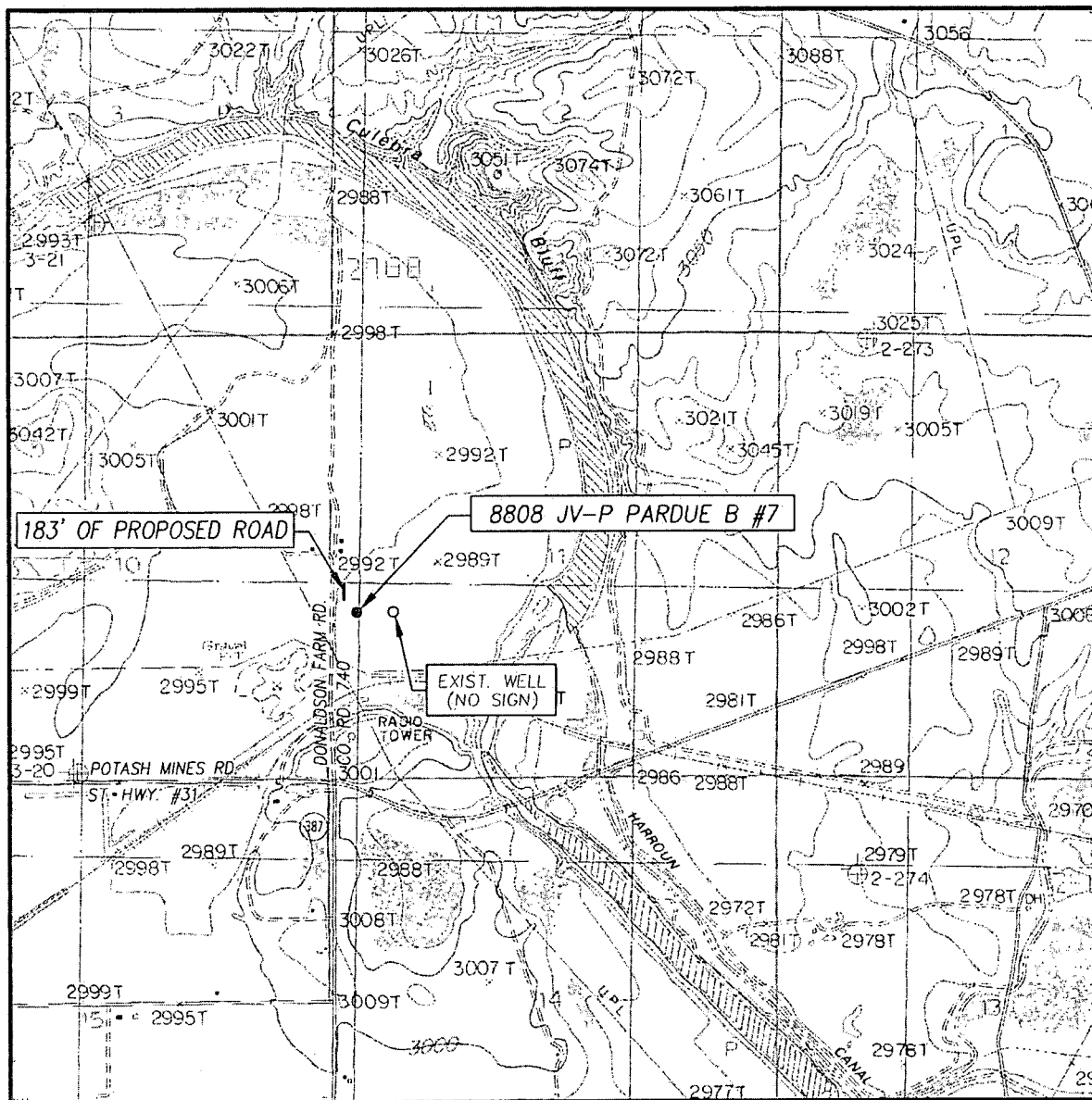
SCALE: 1" = 2 MILES

SEC. 11 TWP. 23-S RGE. 28-E
 SURVEY N.M.P.M.
 COUNTY EDDY STATE NEW MEXICO
 DESCRIPTION 1980' FSL & 330' FWL
 ELEVATION 2990'
 OPERATOR BTA OIL PRODUCERS
 LEASE 8808 JV-P PARDUE B



PROVIDING SURVEYING SERVICES
 SINCE 1946
JOHN WEST SURVEYING COMPANY
 412 N. DAL PASO
 HOBBS, N.M. 88240
 (575) 393-3117

LOCATION VERIFICATION MAP



SCALE: 1" = 2000'

CONTOUR INTERVAL:
LOVING, N.M. - 10'

SEC. 11 TWP. 23-S RGE. 28-E

SURVEY N.M.P.M.

COUNTY EDDY STATE NEW MEXICO

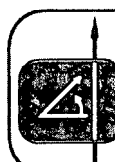
DESCRIPTION 1980' FSL & 330' FWL

ELEVATION 2990'

OPERATOR BTA OIL PRODUCERS

LEASE 8808 JV-P PARDUE B

U.S.G.S. TOPOGRAPHIC MAP
LOVING, N.M.



PROVIDING SURVEYING SERVICES
SINCE 1946
JOHN WEST SURVEYING COMPANY
412 N. DAL PASO
HOBBS, N.M. 88240
(575) 393-3117