

RECEIVED

AUG 28 2019

DISTRICT I  
1825 N. FRENCH DR., HOBBES, NM 88240  
Phone: (505) 393-6161 Fax: (505) 393-0720

DISTRICT II  
811 S. FIRST ST., ARTESIA, NM 88210  
Phone: (505) 748-1223 Fax: (505) 748-0720

DISTRICT III  
1000 RIO BRAZOS RD., AZTEC, NM 87410  
Phone: (505) 334-6178 Fax: (505) 334-6170

DISTRICT IV  
1220 S. ST. FRANCIS DR., SANTA FE, NM 87505  
Phone: (505) 478-3460 Fax: (505) 478-3462

State of New Mexico  
Energy, Minerals & Natural Resources Department

OIL CONSERVATION DIVISION  
1220 SOUTH ST. FRANCIS DR.  
Santa Fe, New Mexico 87505

Form C-102

Revised August 1, 2011

Submit one copy to appropriate

District Office

☐ AMENDED REPORT

WELL LOCATION AND ACREAGE DEDICATION PLAT

API Number 3001545940	Pool Code 98236	Pool Name WC015 G08 S233135D;WOLFCAMP
Property Code	Property Name TODD 36 STATE	Well Number 715H
OGRID No. 6137	Operator Name DEVON ENERGY PRODUCTION COMPANY, L.P.	Elevation 3517.1'

Surface Location

UL or lot No.	Section	Township	Range	Lot Idn	Feet from the	North/South line	Feet from the	East/West line	County
M	36	23-S	31-E		180	SOUTH	425	WEST	EDDY

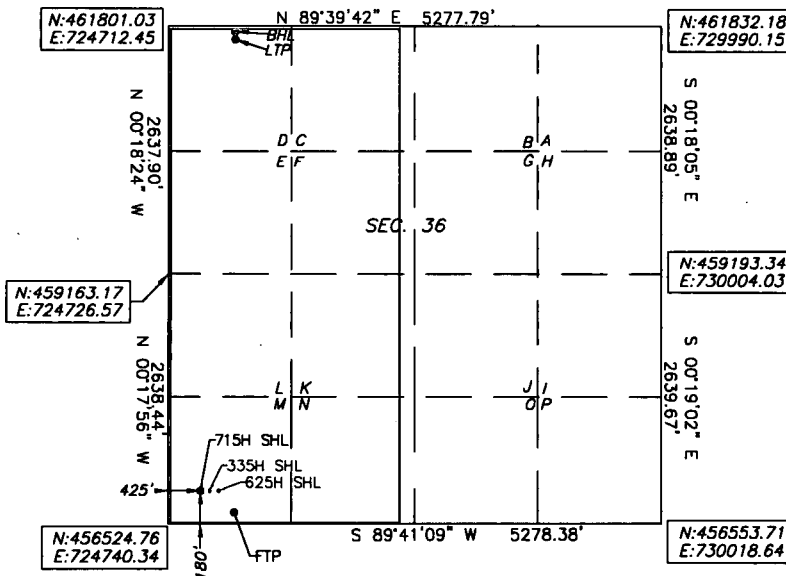
Bottom Hole Location If Different From Surface

UL or lot No.	Section	Township	Range	Lot Idn	Feet from the	North/South line	Feet from the	East/West line	County
D	36	23-S	31-E		20	NORTH	830	WEST	EDDY

Dedicated Acres	Joint or Infill	Consolidation Code	Order No.
320			

NO ALLOWABLE WILL BE ASSIGNED TO THIS COMPLETION UNTIL ALL INTERESTS HAVE BEEN CONSOLIDATED  
OR A NON-STANDARD UNIT HAS BEEN APPROVED BY THE DIVISION

<u>TODD 36 STATE 715H</u> ELEV: 3517.1' LAT: 32.254164 LONG: -103.738679 N: 456707.09 E: 725164.40	<u>FIRST TAKE POINT</u> LAT: 32.253944 LON: -103.737369 N: 456629.31 E: 725569.81	<u>LAST TAKE POINT</u> LAT: 32.267898 LON: -103.737365 N: 461705.93 E: 725542.97	<u>BOTTOM OF HOLE</u> LAT: 32.268118 LON: -103.737365 N: 461785.93 E: 725542.54
---	---	--	---



Note: All bearings recited herein are based on the New Mexico State Plane Coordinate System, NAD 83, New Mexico East Zone 3001, US Survey Feet, all distances are grid.

OPERATOR CERTIFICATION

I hereby certify that the information herein is true and complete to the best of my knowledge and belief, and that this organization either owns a working interest or unleased mineral interest in the land including the proposed bottom hole location or has a right to drill this well at this location pursuant to a contract with an owner of such mineral or working interest, or to a voluntary pooling agreement or a compulsory pooling order heretofore entered by the division.

*Jenny Harms* 8-20-2019  
Signature Date

Jenny Harms

Printed Name

Jenny.harms@dv.com

E-mail Address

SURVEYOR CERTIFICATION

I hereby certify that the well location shown on this plat was plotted from field notes of actual surveys made by me or under my supervision, and that the same is true and correct to the best of my belief.

3/2019

Date of Survey

Signature & Seal of Professional Surveyor



07/03/2019

Certificate No. 22404 B.L. LAMAN

DRAWN BY: REV 06/28/19 JR

RWP 2-29-19