

District I
1625 N. French Dr., Hobbs, NM 88240
Phone: (575) 393-6161 Fax: (575) 393-0720
District II
811 S. First St., Artesia, NM 88210
Phone: (575) 748-1283 Fax: (575) 748-9720
District III
1000 Rio Brazos Road, Aztec, NM 87410
Phone: (505) 334-6178 Fax: (505) 334-6170
District IV
1220 S. St. Francis Dr., Santa Fe, NM 87505
Phone: (505) 476-3460 Fax: (505) 476-3462

State of New Mexico
Energy, Minerals & Natural Resources Department
OIL CONSERVATION DIVISION
1220 South St. Francis Dr.
Santa Fe, NM 87505

RECEIVED

AUG 16 2019

Form C-102
Revised August 1, 2011
Submit one copy to appropriate
District Office

DISTRICT I-ARTESIA O.C.D. ☐ AMENDED REPORT

WELL LOCATION AND ACREAGE DEDICATION PLAT

¹ API Number 30-015-45966		² Pool Code 30215		³ Pool Name Hay Hollow; Bone Spring, North	
⁴ Property Code 308074		⁵ Property Name MYOX 6 STATE COM			⁶ Well Number 501H
⁷ OGRID NO. 229137		⁸ Operator Name COG OPERATING, LLC			⁹ Elevation 3079'

¹⁰ Surface Location

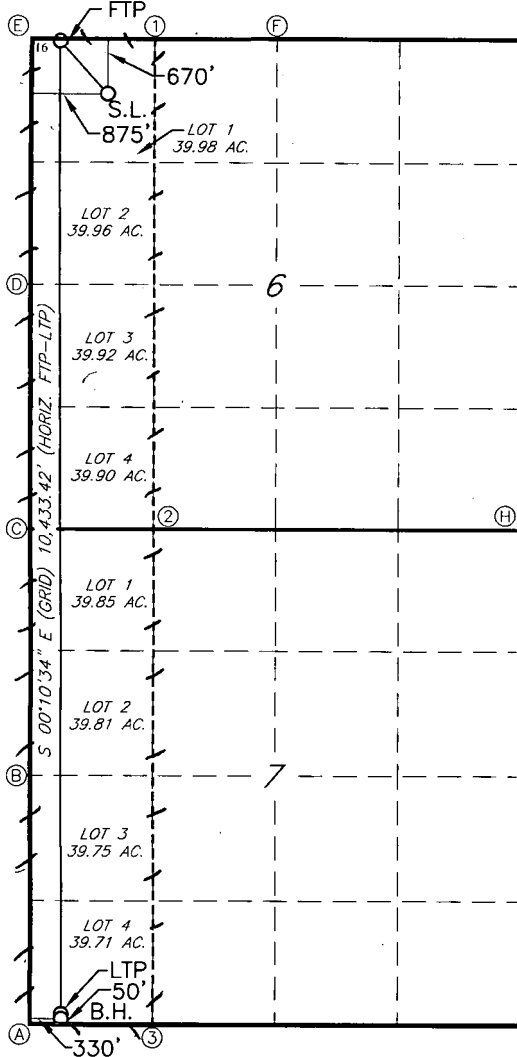
UL or lot no.	Section	Township	Range	Lot Idn	Feet from the	North/South line	Feet From the	East/West line	County
1	6	26S	28E		670	NORTH	875	WEST	EDDY

¹¹ Bottom Hole Location If Different From Surface

UL or lot no.	Section	Township	Range	Lot Idn	Feet from the	North/South line	Feet from the	East/West line	County
4	7	26S	28E		50	SOUTH	330	WEST	EDDY

¹² Dedicated Acres 318.88	¹³ Joint or Infill	¹⁴ Consolidation Code	¹⁵ Order No.
---	-------------------------------	----------------------------------	-------------------------

No allowable will be assigned to this completion until all interest have been consolidated or a non-standard unit has been approved by the division.



GEODETTIC DATA
NAD 83 GRID - NM EAST

SURFACE LOCATION (SL)
N: 391839.4 - E: 603567.4
LAT: 32.0770869° N
LONG: 104.1324160° W

LAST TAKE POINT (LTP)
N: 381976.0 - E: 603052.8
LAT: 32.0499755° N
LONG: 104.1341362° W

FIRST TAKE POINT (FTP)
100' FNL & 330' FWL (Sec. 6)
N: 392407.1 - E: 603020.7
LAT: 32.0786503° N
LONG: 104.1341776° W

BOTTOM HOLE (BH)
N: 381926.1 - E: 603052.9
LAT: 32.0498381° N
LONG: 104.1341360° W

GEODETTIC DATA
NAD 83 GRID - NM EAST

A: FOUND BRASS CAP "1940"
N 381870.7 - E 602723.2

B: FOUND 1" BAR
N 384528.2 - E 602714.9

C: FOUND 2 3/4" IRON PIPE
N 387187.1 - E 602707.2

D: FOUND BRASS CAP "1940"
N 389846.0 - E 602699.0

E: FOUND BRASS CAP "1940"
N 392505.8 - E 602690.5

F: FOUND BRASS CAP "1940"
N 392516.4 - E 605361.5

G: FOUND BRASS CAP "1940"
N 392514.2 - E 608024.8

H: CALCULATED CORNER
N 387235.7 - E 608011.7

I: CALCULATED CORNER
N 381957.1 - E 608001.2

CALCULATED POINTS
1: N 392511.1 - E 604026.3
2: N 387199.5 - E 604052.8
3: N 381892.3 - E 604042.7

17 OPERATOR CERTIFICATION
I hereby certify that the information contained herein is true and complete to the best of my knowledge and belief, and that this organization either owns a working interest or unleased mineral interest in the land including the proposed bottom hole location or has a right to drill this well at this location pursuant to a contract with an owner of such a mineral or working interest, or to a voluntary pooling agreement or a compulsory pooling order heretofore entered by the division.

Signature: *Robyn M. Russell* Date: 8/14/19

Printed Name: Robyn M. Russell

E-mail Address: Russell@concho.com

18 SURVEYOR CERTIFICATION
I hereby certify that the well location shown on this plat was plotted from field notes of actual surveys made by me or under my supervision, and that the same is true and correct to the best of my belief.

03-12-19
Date of Survey

Signature and Seal of Professional Surveyor

19680
Certificate Number

ROBERT M. HOWETT
NEW MEXICO
19680
PROFESSIONAL SURVEYOR

Job No.: LS19030359

RUP 8-25-19