

SEP 17 2019

Form C-102

Revised August 1, 2011

District I
1625 N. French Dr., Hobbs, NM 88240
Phone: (575) 393-6161 Fax: (575) 393-0720
District II
811 S. First St., Artesia, NM 88210
Phone: (575) 748-1283 Fax: (575) 748-9720
District III
1000 Rio Brazos Road, Aztec, NM 87410
Phone: (505) 334-6178 Fax: (505) 334-6170
District IV
1220 S. St. Francis Dr., Santa Fe, NM 87505
Phone: (505) 476-3460 Fax: (505) 476-3462

State of New Mexico
Energy, Minerals & Natural Resources Department
OIL CONSERVATION DIVISION
1220 South St. Francis Dr.
Santa Fe, NM 87505

RECEIVED Submit one copy to appropriate District Office

☐ AMENDED REPORT

WELL LOCATION AND ACREAGE DEDICATION PLAT

1 API Number 30-015-46280		2 Pool Code 98220 ✓		3 Pool Name PURPLE SAGE; WOLFCAMP GAS POOL	
4 Property Code 326106		5 Property Name DELAWARE RANCH 13/24 W1CN FED COM			6 Well Number 2H
7 GRID NO. 14744		8 Operator Name MEWBOURNE OIL COMPANY			9 Elevation 2941'

10 Surface Location

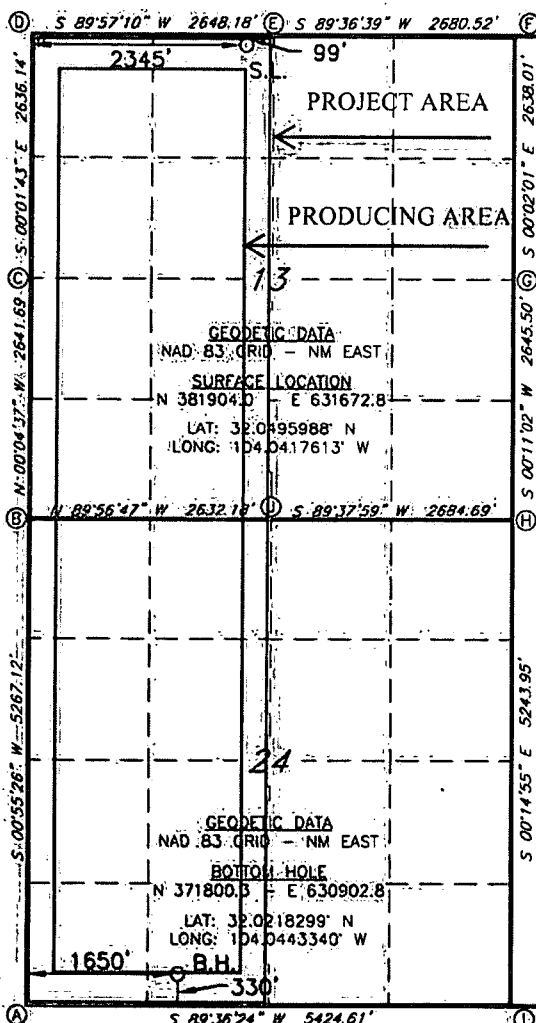
UL or lot no.	Section	Township	Range	Lot Idn	Feet from the	North/South line	Feet from the	East/West line	County
C	13	26S	28E		99	NORTH	2345	WEST	EDDY

11 Bottom Hole Location If Different From Surface

UL or lot no.	Section	Township	Range	Lot Idn	Feet from the	North/South line	Feet from the	East/West line	County
N	24	26S	28E		330	SOUTH	1650	WEST	EDDY

12 Dedicated Acres 640	13 Joint or Infill	14 Consolidation Code	15 Order No.
----------------------------------	--------------------	-----------------------	--------------

No allowable will be assigned to this completion until all interest have been consolidated or a non-standard unit has been approved by the division.



CORNER DATA
NAD 83 GRID - NM EAST

A: FOUND BRASS CAP "1995"
N 371459.1 - E 629247.9

B: FOUND BRASS CAP "1995"
N 376724.4 - E 629332.8

C: FOUND BRASS CAP "1995"
N 379365.5 - E 629329.2

D: FOUND BRASS CAP "1995"
N 382001.1 - E 629327.9

E: FOUND BRASS CAP "1995"
N 382003.2 - E 631975.5

F: FOUND BRASS CAP "1940"
N 382021.5 - E 634655.4

G: FOUND BRASS CAP "1940"
N 379384.0 - E 634656.9

H: FOUND BRASS CAP "1940"
N 376739.1 - E 634648.4

I: FOUND BRASS CAP "1995"
N 371496.4 - E 634671.2

J: FOUND BRASS CAP "1995"
N 376721.9 - E 631964.4

17 OPERATOR CERTIFICATION

I hereby certify that the information contained herein is true and complete to the best of my knowledge and belief, and that this organization either owns a working interest or unleased mineral interest in the land including the proposed bottom hole location or has a right to drill this well at this location pursuant to a contract with an owner of such a mineral or working interest, or in a voluntary pooling agreement or a compulsory pooling order heretofore entered by the division.

Signature: *Bradley Bishop* Date: **3-13-19**
Printed Name: **BRADLEY BISHOP**
E-mail Address: **BBISHOP@MEWBOURNE.COM**

18 SURVEYOR CERTIFICATION

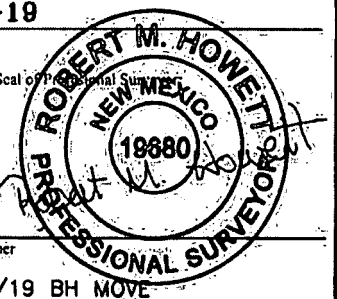
I hereby certify that the well location shown on this plat was plotted from field notes of actual surveys made by me or under my supervision, and that the same is true and correct to the best of my belief.

1-31-19

Date of Survey

Signature and Seal of Professional Surveyor

19880
Certificate Number
REV. 3/5/19 BH MOVE



Job No.:

LS19020145

RWP 9-17-19