

District I  
1625 N. French Dr., Hobbs, NM 88240  
District II  
811 S. First St., Artesia, NM 88210  
District III  
1000 Rio Brazos Rd., Aztec, NM 87410  
District IV  
1220 S. St. Francis Dr., Santa Fe, NM 87505

State of New Mexico  
Energy, Minerals & Natural Resources

Form C-104  
Revised August 1, 2011

Oil Conservation Division  
1220 South St. Francis Dr.  
Santa Fe, NM 87505

Submit one copy to appropriate District Office

☒ AMENDED REPORT

**I. REQUEST FOR ALLOWABLE AND AUTHORIZATION TO TRANSPORT**

<sup>1</sup> Operator name and Address XTO Permian Operation LLC 6401 Holiday Hill Rd., Bldg 5 Midland, TX 79707		<sup>2</sup> OGRID Number 260737
		<sup>3</sup> Reason for Filing Code/ Effective Date New Well
<sup>4</sup> API Number 30-015-44893	<sup>5</sup> Pool Name PURPLE SAGE; WOLFCAMP (GAS)	<sup>6</sup> Pool Code 98220
<sup>7</sup> Property Code 325593	<sup>8</sup> Property Name POKER LAKE UNIT 18 BD	<sup>9</sup> Well Number 121H

**II. <sup>10</sup> Surface Location**

UL or lot no. 2	Section 18	Township 25S	Range 30E	Lot Idn	Feet from the 2310	North/South Line North	Feet from the 540	East/West line West	County Eddy
--------------------	---------------	-----------------	--------------	---------	-----------------------	---------------------------	----------------------	------------------------	----------------

**<sup>11</sup> Bottom Hole Location**

UL or lot no. 4	Section 19	Township 25S	Range 30E	Lot Idn	Feet from the 179	North/South line South	Feet from the 340	East/West line West	County Eddy
--------------------	---------------	-----------------	--------------	---------	----------------------	---------------------------	----------------------	------------------------	----------------

<sup>12</sup> Lse Code	<sup>13</sup> Producing Method Code	<sup>14</sup> Gas Connection Date	<sup>15</sup> C-129 Permit Number	<sup>16</sup> C-129 Effective Date	<sup>17</sup> C-129 Expiration Date
------------------------	-------------------------------------	-----------------------------------	-----------------------------------	------------------------------------	-------------------------------------

**III. Oil and Gas Transporters**

<sup>18</sup> Transporter OGRID	<sup>19</sup> Transporter Name and Address	<sup>20</sup> O/G/W
214984	Plains Marketing, LP	O
248440	Western Refining Co, LP	O
005380	XTO Energy, Inc	G
SEP 04 2019		
DISTRICT IV ARTESIA O.C.D.		

**IV. Well Completion Data**

<sup>21</sup> Spud Date 12/20/18	<sup>22</sup> Ready Date 07/17/19	<sup>23</sup> TD 18740	<sup>24</sup> PBTB	<sup>25</sup> Perforations 11285-18588	<sup>26</sup> DHC, MC
<sup>27</sup> Hole Size 18.5	<sup>28</sup> Casing & Tubing Size 16	<sup>29</sup> Depth Set 815	<sup>30</sup> Sacks Cement 660		
14.75	11.75	3260	2466		
10.625	8.625	9558	3490		
7.875	5.5	18735	1846		
	2.875	10106			

**V. Well Test Data**

<sup>31</sup> Date New Oil 07/29/19	<sup>32</sup> Gas Delivery Date 07/29/19	<sup>33</sup> Test Date 8/27/19	<sup>34</sup> Test Length 24 hrs	<sup>35</sup> Tbg. Pressure	<sup>36</sup> Csg. Pressure
<sup>37</sup> Choke Size	<sup>38</sup> Oil 1782	<sup>39</sup> Water 4549	<sup>40</sup> Gas 7307		<sup>41</sup> Test Method Gas lift

<sup>42</sup> I hereby certify that the rules of the Oil Conservation Division have been complied with and that the information given above is true and complete to the best of my knowledge and belief.

Signature: Cheryl Rowell

Printed name:  
CHERYL ROWELL

Title:  
REGULATORY COORDINATOR

E-mail Address:  
CHERYL\_ROWELL@XTOENERGY.COM

Date:  
08/29/19

Phone:  
432-571-8205

OIL CONSERVATION DIVISION

Approved by:

Title:

Approval Date:

Pending BLM approvals will subsequently be reviewed and scanned.

RECEIVED

SEP 04 2019

District I  
1625 N. French Dr., Hobbs, NM 88240  
Phone: (575) 393-6161 Fax: (575) 393-0720

District II  
811 S. First St., Artesia, NM 88210  
Phone: (575) 748-1283 Fax: (575) 748-9720

District III  
1000 Rio Brazos Road, Aztec, NM 87410  
Phone: (505) 334-6178 Fax: (505) 334-6170

District IV  
1220 S. St. Francis Dr., Santa Fe, NM 87505  
Phone: (505) 476-3460 Fax: (505) 476-3462

State of New Mexico  
Energy, Minerals & Natural Resources Department  
OIL CONSERVATION DIVISION  
1220 South St. Francis Dr.  
Santa Fe, NM 87505

Form C-102  
Revised August 1, 2011  
Submit one copy to appropriate  
District Office

☐ AMENDED REPORT

WELL LOCATION AND ACREAGE DEDICATION PLAT AS-DRILLED PLAT

<sup>1</sup> API Number 30-015-44893	<sup>2</sup> Pool Code 98220	<sup>3</sup> Pool Name PURPLE SAGE; WOLFCAMP
<sup>4</sup> Property Code 325593	<sup>5</sup> Property Name POKER LAKE UNIT 18 BD	<sup>6</sup> Well Number 121H
<sup>7</sup> OGRID No. 373075	<sup>8</sup> Operator Name XTO PERMIAN OPERATING, LLC	<sup>9</sup> Elevation 3,163'

<sup>10</sup> Surface Location

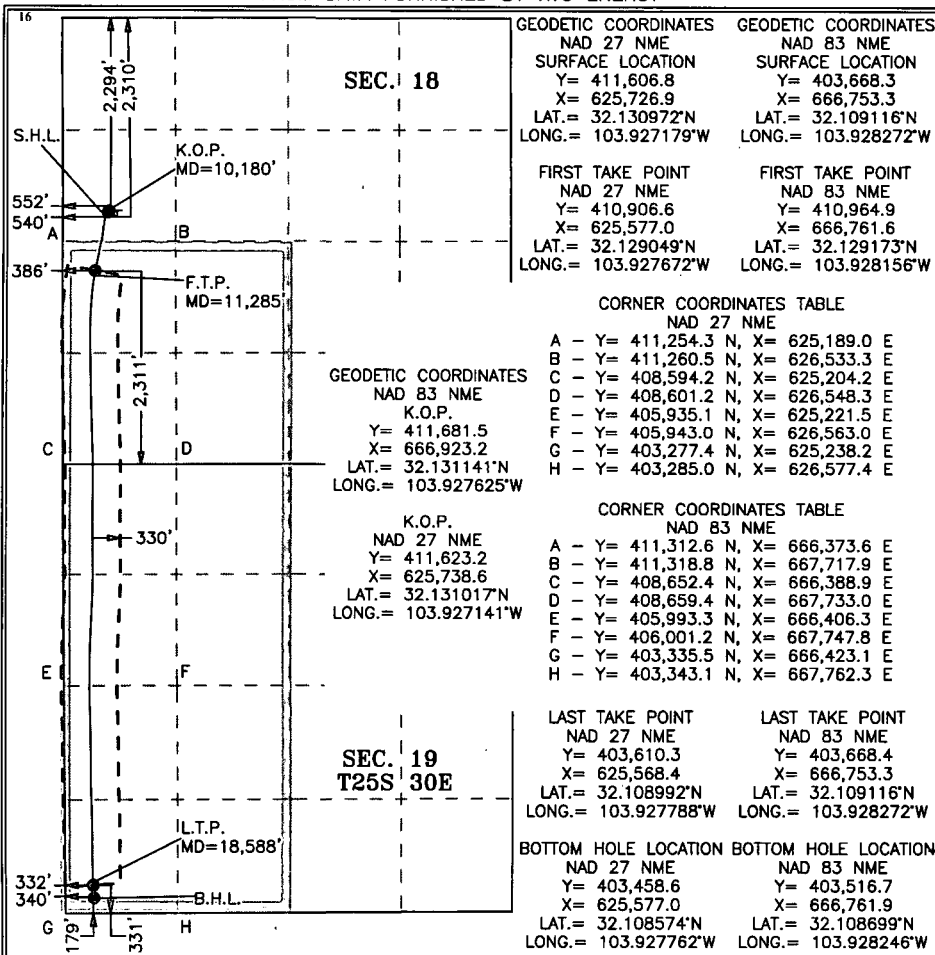
UL or lot no.	Section	Township	Range	Lot Idn	Feet from the	North/South line	Feet from the	East/West line	County
L2	18	25 S	30 E		2,310	NORTH	540	WEST	EDDY

<sup>11</sup> Bottom Hole Location If Different From Surface

UL or lot no.	Section	Township	Range	Lot Idn	Feet from the	North/South line	Feet from the	East/West line	County
L4	19	25 S	30 E		179	SOUTH	340	WEST	EDDY

<sup>12</sup> Dedicated Acres 482.62	<sup>13</sup> Joint or Infill	<sup>14</sup> Consolidation Code	<sup>15</sup> Order No.
-----------------------------------------	-------------------------------	----------------------------------	-------------------------

No allowable will be assigned to this completion until all interests have been consolidated or a non-standard unit has been approved by the division.  
NOTE: AS-DRILLED BOTTOM HOLE PLOTTED  
FROM DATA FURNISHED BY XTO ENERGY



<sup>17</sup> OPERATOR CERTIFICATION

I hereby certify that the information contained herein is true and complete to the best of my knowledge and belief, and that this organization either owns a working interest or unleased mineral interest in the land including the proposed bottom hole location or has a right to drill this well at this location pursuant to a contract with an owner of such a mineral or working interest, or to a voluntary pooling agreement or a compulsory pooling order heretofore entered by the division.

Cheryl Rowell 8/16/19  
Signature Date

Cheryl Rowell

Printed Name

cheryl\_rowell@xtoenergy.com

E-mail Address

<sup>18</sup> SURVEYOR CERTIFICATION

I hereby certify that the well location shown on this plat was plotted from field notes of actual surveys made by me or under my supervision, and that the same is true and correct to the best of my belief.

8-16-2019

Date of Survey

Signature and Seal of  
Professional Surveyor:

MARK DILLON HARP 23786  
Certificate Number



JC

2017050631

RECEIVED

Intent ☐ As Drilled ☒

SEP 04 2019

API #  
30-015-44893

DISTRICT 7 - ARTESIA O.C.D.

Operator Name: XTO PERMIAN OPERATING, LLC	Property Name: POKER LAKE UNIT 18 BD	Well Number 121H
----------------------------------------------	-----------------------------------------	---------------------

## Kick Off Point (KOP)

UL L2	Section 18	Township 25S	Range 30E	Lot	Feet 2310	From N/S N	Feet 540	From E/W W	County EDDY
Latitude 32.131017					Longitude 103.927141			NAD 83	

## First Take Point (FTP)

UL L3	Section 18	Township 25S	Range 30E	Lot	Feet 2311	From N/S S	Feet 386	From E/W W	County EDDY
Latitude 32.129173					Longitude 103.928156			NAD 83	

## Last Take Point (LTP)

UL L4	Section 19	Township 25S	Range 30E	Lot	Feet 332	From N/S S	Feet 331	From E/W W	County EDDY
Latitude 32.109116					Longitude 103.928272			NAD 83	

Is this well the defining well for the Horizontal Spacing Unit? ☐Is this well an infill well? ☒

If infill is yes please provide API if available, Operator Name and well number for Defining well for Horizontal Spacing Unit.

API # 30-015-44891	Operator Name: XTO PERMIAN OPERATING, LLC	Property Name: POKER LAKE UNIT 18 BD	Well Number 103H
-----------------------	----------------------------------------------	-----------------------------------------	---------------------

KZ 06/29/2018

RECEIVED

SEP 04 2019

Form 3160-4  
(August 2007)UNITED STATES  
DEPARTMENT OF THE INTERIOR  
BUREAU OF LAND MANAGEMENT  
DISTRICT 11 ARTESIA O.C.D.FORM APPROVED  
OMB No. 1004-0137  
Expires: July 31, 2010

## WELL COMPLETION OR RECOMPLETION REPORT AND LOG

5. Lease Serial No. NMNM120898	
6. If Indian, Allottee or Tribe Name	
7. Unit or CA Agreement Name and No.	
8. Lease Name and Well No. POKER LAKE UNIT 18 BD 121H	
9. API Well No. 30-015-44893	
10. Field and Pool, or Exploratory PURPLE SAGE; WOLFCAMP	
11. Sec., T., R., M., or Block and Survey or Area Sec 18 T25S R30E Mer NMP	
12. County or Parish EDDY	13. State NM
17. Elevations (DF, KB, RT, GL)* 3163 GL	

1a. Type of Well <input type="checkbox"/> Oil Well <input checked="" type="checkbox"/> Gas Well <input type="checkbox"/> Dry <input type="checkbox"/> Other	
b. Type of Completion <input checked="" type="checkbox"/> New Well <input type="checkbox"/> Work Over <input type="checkbox"/> Deepen <input type="checkbox"/> Plug Back <input type="checkbox"/> Diff. Resvr. Other _____	

2. Name of Operator XTO PERMIAN OPERATING, LLC E-Mail: CHERYL_ROWELL@XTOENERGY.COM	
3. Address 6401 HOLIDAY HILL RD, BLDG 5 MIDLAND, TX 79707	
3a. Phone No. (include area code) Ph: 432-571-8205	

4. Location of Well (Report location clearly and in accordance with Federal requirements)* Sec 18 T25S R30E Mer NMP At surface SWNW 2310FNL 540FWL 32.109116 N Lat, 103.928272 W Lon Sec 18 T25S R30E Mer NMP At top prod interval reported below NWSW 2311FSL 386FWL Sec 19 T25S R30E Mer NMP At total depth SWSW 179FSL 340FWL 32.108633 N Lat, 103.928246 W Lon	
--------------------------------------------------------------------------------------------------------------------------------------------------------------------------------------------------------------------------------------------------------------------------------------------------------------------------------------------------------------------------------------	--

14. Date Spudded 12/20/2018	15. Date T.D. Reached 02/04/2018	16. Date Completed <input type="checkbox"/> D & A <input checked="" type="checkbox"/> Ready to Prod. 07/17/2019
--------------------------------	-------------------------------------	-----------------------------------------------------------------------------------------------------------------------

18. Total Depth: MD TVD 18740 10822	19. Plug Back T.D.: MD TVD	20. Depth Bridge Plug Set: MD TVD
-------------------------------------------	-------------------------------	--------------------------------------

21. Type Electric & Other Mechanical Logs Run (Submit copy of each) RCG/GR/CCL	22. Was well cored? <input checked="" type="checkbox"/> No <input type="checkbox"/> Yes (Submit analysis) Was DST run? <input checked="" type="checkbox"/> No <input type="checkbox"/> Yes (Submit analysis) Directional Survey? <input type="checkbox"/> No <input checked="" type="checkbox"/> Yes (Submit analysis)
-----------------------------------------------------------------------------------	------------------------------------------------------------------------------------------------------------------------------------------------------------------------------------------------------------------------------------------------------------------------------------------------------------------------------

## 23. Casing and Liner Record (Report all strings set in well)

Hole Size	Size/Grade	Wt. (#/ft.)	Top (MD)	Bottom (MD)	Stage Cementer Depth	No. of Sk. & Type of Cement	Slurry Vol. (BBL)	Cement Top*	Amount Pulled
18.500	16.000 J-55	84.0	0	815		660		0	
14.750	11.750 J-55	47.0	0	3260		2466		0	
10.625	8.625 P-110	32.0	0	9558	3422	3490		0	
7.875	5.500 P-110	20.0	0	18735		1846		2800	

## 24. Tubing Record

Size	Depth Set (MD)	Packer Depth (MD)	Size	Depth Set (MD)	Packer Depth (MD)	Size	Depth Set (MD)	Packer Depth (MD)
2.875	10106	10100						

## 25. Producing Intervals

## 26. Perforation Record

Formation	Top	Bottom	Perforated Interval	Size	No. Holes	Perf. Status
PURPLE SAGE; WOLFCAMP	11285	18588	11285 TO 18588	4.000	2400	ACTIVE/PRODUCING
B)						
C)						
D)						

## 27. Acid, Fracture, Treatment, Cement Squeeze, Etc.

Depth Interval	Amount and Type of Material
11285 TO 18588	14,782,405 GALS SLICKWATER, 4,604 GALS ACID, 18,469,624 PROPPANT

## 28. Production - Interval A

Date First Produced	Test Date	Hours Tested	Test Production	Oil BBL	Gas MCF	Water BBL	Oil Gravity Corr. API	Gas Gravity	Production Method
7/17/19	8/27/19	24	→	1782	7307	4549			GPS Lift
Choke Size	Thg. Press. Flwg. SI	Csg. Press.	24 Hr. Rate	Oil BBL	Gas MCF	Water BBL	Gas:Oil Ratio	Well Status	

## 28a. Production - Interval B

Date First Produced	Test Date	Hours Tested	Test Production	Oil BBL	Gas MCF	Water BBL	Oil Gravity Corr. API	
Choke Size	Thg. Press. Flwg. SI	Csg. Press.	24 Hr. Rate	Oil BBL	Gas MCF	Water BBL		

(See Instructions and spaces for additional data on reverse side)

ELECTRONIC SUBMISSION #481199 VERIFIED BY THE BLM WELL INFO

\*\* OPERATOR-SUBMITTED \*\* OPERATOR-S

\*\* OPERATOR-SUBMITTED \*\*

Pending BLM approvals will  
subsequently be reviewed and  
scanned.

## 28b. Production - Interval C

Date First Produced	Test Date	Hours Tested	Test Production	Oil BBL	Gas MCF	Water BBL	Oil Gravity Corr. API	Gas Gravity	Production Method
			→						
Choke Size	Tbg. Press. Flwg. SI	Csg. Press.	24 Hr. Rate	Oil BBL	Gas MCF	Water BBL	Gas:Oil Ratio	Well Status	
			→						

## 28c. Production - Interval D

Date First Produced	Test Date	Hours Tested	Test Production	Oil BBL	Gas MCF	Water BBL	Oil Gravity Corr. API	Gas Gravity	Production Method
			→						
Choke Size	Tbg. Press. Flwg. SI	Csg. Press.	24 Hr. Rate	Oil BBL	Gas MCF	Water BBL	Gas:Oil Ratio	Well Status	
			→						

29. Disposition of Gas(Sold, used for fuel, vented, etc.)  
UNKNOWN

## 30. Summary of Porous Zones (Include Aquifers):

Show all important zones of porosity and contents thereof: Cored intervals and all drill-stem tests, including depth interval tested, cushion used, time tool open, flowing and shut-in pressures and recoveries.

## 31. Formation (Log) Markers

Formation	Top	Bottom	Descriptions, Contents, etc.	Name	Top Meas. Depth
TOP OF SALT	1037	3285	SALT	TOP OF SALT	1037
BASE OF SALT	3285	33504	SALT	BASE OF SALT	3285
DELAWARE	3504	7371	SHALE, SAND, OIL, GAS	DELAWARE	3504
BONE SPRING	7371	10495	SAND, LIME, OIL, GAS	BONE SPRING	7371
WOLFCAMP	10495		SHALE, OIL, GAS	WOLFCAMP	10495

32. Additional remarks (include plugging procedure):  
KOP = 10,180'

## 33. Circle enclosed attachments:

- |                                                       |                    |               |                       |
|-------------------------------------------------------|--------------------|---------------|-----------------------|
| 1. Electrical/Mechanical Logs (1 full set req'd.)     | 2. Geologic Report | 3. DST Report | 4. Directional Survey |
| 5. Sundry Notice for plugging and cement verification | 6. Core Analysis   | 7. Other:     |                       |

34. I hereby certify that the foregoing and attached information is complete and correct as determined from all available records (see attached instructions):

Electronic Submission #481199 Verified by the BLM Well Information System.  
For XTO PERMIAN OPERATING, LLC, sent to the Carlsbad

Name (please print) CHERYL ROWELL

Title REGULATORY COORDINATOR

Signature \_\_\_\_\_ (Electronic Submission)

Date 08/29/2019

Title 18 U.S.C. Section 1001 and Title 43 U.S.C. Section 1212, make it a crime for any person knowingly and willfully to make to any department or agency of the United States any false, fictitious or fraudulent statements or representations as to any matter within its jurisdiction.

**\*\* ORIGINAL \*\* ORIGINAL \*\* ORIGINAL \*\* ORIGINAL \*\* ORIGINAL \*\* ORIGINAL \*\* ORIGINAL \*\***