

District I
1625 N. French Dr., Hobbs, NM 88240
District II
811 S. First St., Artesia, NM 88210
District III
1000 Rio Brazos Rd., Aztec, NM 87410
District IV
1220 S. St. Francis Dr., Santa Fe, NM 87505

State of New Mexico
Energy, Minerals & Natural Resources

NM OIL CONSERVATION
ARTESIA DISTRICT

SEP 24 2019

Form C-104
Revised August 1, 2011

Oil Conservation Division
1220 South St. Francis Dr.
Santa Fe, NM 87505

Submit one copy to appropriate District Office

RECEIVED

☐ AMENDED REPORT

I. REQUEST FOR ALLOWABLE AND AUTHORIZATION TO TRANSPORT

¹ Operator name and Address BTA OIL PRODUCERS, LLC		² OGRID Number 260297
		³ Reason for Filing Code/ Effective Date NEW WELL
⁴ API Number 30 - 015-44339	⁵ Pool Name PURPLE SAGE (WOLFCAMP) GAS	⁶ Pool Code 98220
⁷ Property Code 320813	⁸ Property Name OGDEN 20509 32-29 FEDERAL COM	⁹ Well Number 5H

II. ¹⁰ Surface Location

UL or lot no.	Section	Township	Range	Lot Idn	Feet from the	North/South Line	Feet from the	East/West line	County
F	32	23S	28E		2472	NORTH	1357	WEST	EDDY

¹¹ Bottom Hole Location

UL or lot no.	Section	Township	Range	Lot Idn	Feet from the	North/South line	Feet from the	East/West line	County
C	29	23S	28E		38.9	NORTH	1963.6	WEST	EDDY

¹² Lse Code	¹³ Producing Method Code FLOWING	¹⁴ Gas Connection Date 7/24/2019	¹⁵ C-129 Permit Number	¹⁶ C-129 Effective Date	¹⁷ C-129 Expiration Date
------------------------	--	--	-----------------------------------	------------------------------------	-------------------------------------

III. Oil and Gas Transporters

¹⁸ Transporter OGRID	¹⁹ Transporter Name and Address	²⁰ O/G/W
	ENLINK CRUDE PURCHASING LLC	O
	SENDERO CARLSBAD MIDSTREAM, LLC 1000 LOUISIANA AVE., SUITE 6900 HOUSTON, TX. 77002	G

IV. Well Completion Data

²¹ Spud Date 02/26/2019	²² Ready Date 07/23/2019	²³ TD 17155	²⁴ PBTB	²⁵ Perforations 9,700' - 16,984'	²⁶ DHC, MC
²⁷ Hole Size	²⁸ Casing & Tubing Size	²⁹ Depth Set	³⁰ Sacks Cement		
17 1/2"	13 3/8"	360'	400		
12 1/4"	9 5/8"	2,522'	810		
8 3/4"	7"	9,585'	1,135		
6 1/8"	4 1/2"	8,912' - 17,155'	545		

V. Well Test Data

³¹ Date New Oil 07/23/2019	³² Gas Delivery Date 07/24/2019	³³ Test Date 08/01/2019	³⁴ Test Length 24	³⁵ Tbg. Pressure 1,550	³⁶ Csg. Pressure 1,450
³⁷ Choke Size 38/64	³⁸ Oil 1080	³⁹ Water 4,167	⁴⁰ Gas 1,879	1,550	⁴¹ Test Method FLOWING

⁴² I hereby certify that the rules of the Oil Conservation Division have been complied with and that the information given above is true and complete to the best of my knowledge and belief.

Signature: *Katy Reddell*

Printed name:
KATY REDDELL

Title:
REGULATORY ANALYST

E-mail Address:
kreddell@btaoil.com

Date:
08/27/2019

Phone:
432-682-3753

OIL CONSERVATION DIVISION

Approved by:

"Denied"

Title:

Insufficient

Approval Date:

info.

"AS Drilled" C-102;
Copy of Well Completion; Final Survey
Amended C-104

SEP 24 2019

Form C-102

Revised August 1, 2011

Submit one copy to appropriate
District Office

RECEIVED

□ AMENDED REPORT

DISTRICT I
1625 N. French Dr., Hobbs, NM 88240
Phone: (575) 393-6161 Fax: (575) 393-0720
DISTRICT II
811 S. First St., Artesia, NM 88210
Phone: (575) 748-1283 Fax: (575) 748-9720
DISTRICT III
1000 Rio Brazos Road, Aztec, NM 87410
Phone: (505) 334-6178 Fax: (505) 334-6170
DISTRICT IV
1220 S. St. Francis Dr., Santa Fe, NM 87505
Phone: (505) 476-3460 Fax: (505) 476-3462

State of New Mexico
Energy, Minerals & Natural Resources Department
OIL CONSERVATION DIVISION
1220 South St. Francis Dr.
Santa Fe, New Mexico 87505

WELL LOCATION AND ACREAGE DEDICATION PLAT

API Number 30-015-44339	Pool Code 98220	Pool Name PURPLE SAGE (WOLFCAMP) GAS
Property Code 320813	Property Name OGDEN 20509 32-29 FEDERAL COM	Well Number 5H
OGRID No. 260297	Operator Name BTA OIL PRODUCERS, LLC	Elevation 3107'

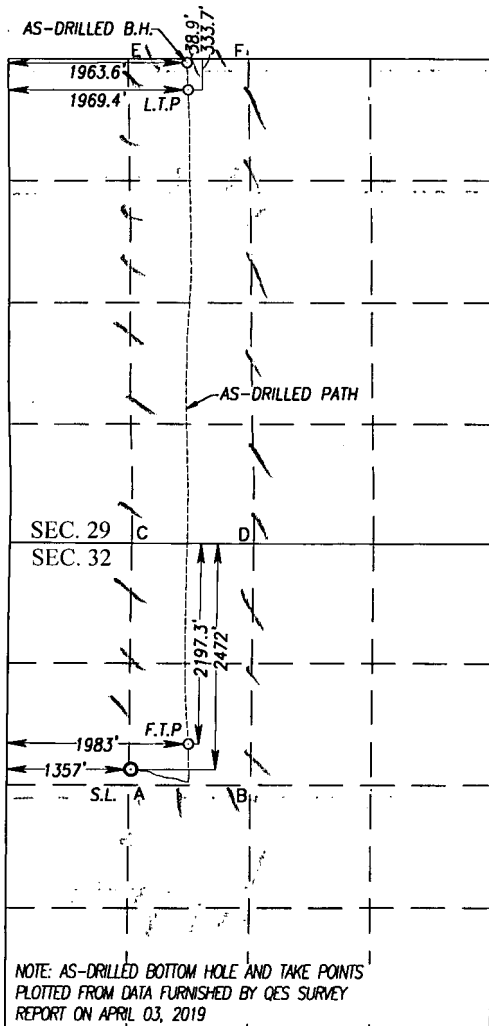
Surface Location

UL or lot No.	Section	Township	Range	Lot Idn	Feet from the	North/South line	Feet from the	East/West line	County
F	32	23-S	28-E		2472	NORTH	1357	WEST	EDDY

As-Drilled Bottom Hole Location If Different From Surface

UL or lot No.	Section	Township	Range	Lot Idn	Feet from the	North/South line	Feet from the	East/West line	County
C	29	23-S	28-E		38.9	NORTH	1963.6	WEST	EDDY
Dedicated Acres 240	Joint or Infill	Consolidation Code	Order No.						

NO ALLOWABLE WILL BE ASSIGNED TO THIS COMPLETION UNTIL ALL INTERESTS HAVE BEEN CONSOLIDATED OR A NON-STANDARD UNIT HAS BEEN APPROVED BY THE DIVISION



NOTE: AS-DRILLED BOTTOM HOLE AND TAKE POINTS
PLOTTED FROM DATA FURNISHED BY QES SURVEY
REPORT ON APRIL 03, 2019

SCALE: 1"=2000'	
GEODETTIC COORDINATES	GEODETTIC COORDINATES
NAD 83 NME	NAD 27 NME
AS-DRILLED BOTTOM	AS-DRILLED BOTTOM
HOLE LOCATION	HOLE LOCATION
Y= 466833.9 N	Y= 466775.0 N
X= 609807.1 E	X= 568624.4 E
LAT.=32.283206° N	LAT.=32.283086° N
LONG.=104.111772° W	LONG.=104.111276° W
GEODETTIC COORDINATES	GEODETTIC COORDINATES
NAD 83 NME	NAD 27 NME
LAST TAKE POINT	LAST TAKE POINT
Y= 466539.2 N	Y= 466480.2 N
X= 609814.5 E	X= 568631.7 E
LAT.=32.282396° N	LAT.=32.282276° N
LONG.=104.111750° W	LONG.=104.111254° W
CORNER COORDINATES TABLE	CORNER COORDINATES TABLE
NAD 83 NME	NAD 27 NME
A - Y= 458878.7 N, X= 568001.6 E	A - Y= 458880.6 N, X= 569337.6 E
B - Y= 458880.6 N, X= 569337.6 E	B - Y= 461518.4 N, X= 568027.7 E
C - Y= 461518.4 N, X= 568027.7 E	D - Y= 461515.2 N, X= 569367.1 E
D - Y= 461515.2 N, X= 569367.1 E	E - Y= 466812.1 N, X= 567978.9 E
E - Y= 466812.1 N, X= 567978.9 E	F - Y= 466815.6 N, X= 569296.7 E
F - Y= 466815.6 N, X= 569296.7 E	
CORNER COORDINATES TABLE	CORNER COORDINATES TABLE
NAD 83 NME	NAD 27 NME
A - Y= 458937.5 N, X= 609184.5 E	A - Y= 458937.5 N, X= 609184.5 E
B - Y= 458939.3 N, X= 610520.5 E	B - Y= 458939.3 N, X= 610520.5 E
C - Y= 461577.2 N, X= 609210.5 E	C - Y= 461577.2 N, X= 609210.5 E
D - Y= 461574.1 N, X= 610550.0 E	D - Y= 461574.1 N, X= 610550.0 E
E - Y= 466871.1 N, X= 609161.6 E	E - Y= 466871.1 N, X= 609161.6 E
F - Y= 466874.6 N, X= 610479.4 E	F - Y= 466874.6 N, X= 610479.4 E
FIRST TAKE POINT	FIRST TAKE POINT
NAD 83 NME	NAD 27 NME
Y= 459379.5 N	Y= 459320.7 N
X= 609834.9 E	X= 568652.0 E
LAT.=32.262715° N	LAT.=32.262594° N
LONG.=104.111731° W	LONG.=104.111236° W
SURFACE LOCATION	SURFACE LOCATION
NAD 83 NME	NAD 27 NME
Y= 459105.8 N	Y= 459047.1 N
X= 609206.7 E	X= 568023.8 E
LAT.=32.261966° N	LAT.=32.261846° N
LONG.=104.113766° W	LONG.=104.113270° W

OPERATOR CERTIFICATION

I hereby certify that the information herein is true and complete to the best of my knowledge and belief, and that this organization either owns a working interest or unleased mineral interest in the land including the proposed bottom hole location or has a right to drill this well at this location pursuant to a contract with an owner of such mineral or working interest, or to a voluntary pooling agreement or a compulsory pooling order heretofore entered by the division.

KATY REDDELL 9/20/19

Signature Date

KATY REDDELL

Printed Name

kreddell@btaoil.com

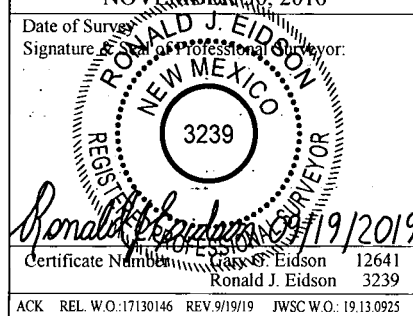
E-mail Address

SURVEYOR CERTIFICATION

I hereby certify that the well location shown on this plat was plotted from field notes of actual surveys made by me or under my supervision, and that the same is true and correct to the best of my belief.

NOVEMBER 30, 2016

Date of Survey
Signature of Professional Surveyor:



Certificate Number
Ronald J. Eidson 12641
Ronald J. Eidson 3239

ACK REL W.O.:17130146 REV 9/19/19 JWSC W.O.: 19.13.0925